



October 2021

Student Voting Rates for Winona State University

2020 NSLVE Campus Report

October 2021

Dear Colleagues:

We are pleased to send this tailored report containing your students' voting rates for 2020. This report contains three years of relevant topline data: 2016, 2018, and 2020. As always, we disaggregate the data so you can better identify and address gaps in participation.

College and university students participated in record-breaking numbers in the 2020 election. In 2016, the Average Institutional Voting Rate was 53%. This year, it jumped to 66%. We encourage you to review Democracy Counts 2020, our most recent national report.

As in past years, we urge you to share this report widely and strategically, particularly with faculty who, in 2020, were often the most consistent communicators with students about ever-changing voting conditions and deadlines. We also urge you to review our recommendations for engaging elections to cultivate a robust and healthy campus climate for political engagement, discourse, equity, and participation: Election Imperatives (2019) and the more recent Election Imperatives: A Time of Physical Distancing and Social Action. Since "pervasive political discussions" and attentiveness to the campus culture around speech and academic freedom are among our top recommendations, we direct you to our discussion guides on talking about your NSLVE report, on free speech and inclusion, and on hot topics, our Making Sense of ... guides.

Finally, we always encourage you to work with us. Help us help you get better data by reaching out. Email IDHE@Tufts.edu for more information. And as always, watch your inbox for our periodic newsletter, IDHE Update, for announcements about upcoming releases and new resources.

Congratulations on engaging your students in the 2020 election. Remember, student political learning is a year-round objective. Elections may be episodic, but student political engagement should not be.

All the Best,
IDHE Team



(Top Row from left) Duy Trinh, Program Administrator; Adam Gismondi, Director of Impact; Dave Brinker, Senior Researcher;
(Bottom Row from left) Nancy Thomas, Director; Norma López, Postdoctoral Scholar; Prabhat Gautam, Data Manager.

We also want to acknowledge and thank **Syed Golam Mohaimen, M.S. student in Data Science at Tufts University** for his contributions toward the creation of these reports.

In This Report

This report presents data on student voter participation rates for your campus. The topline counts on page 5 tells you how many students voted, but we encourage you to look carefully at the data on subsequent pages to learn who voted. Data are presented in the form of vessel charts, overlapping donut charts, and tables.



	2014			2018			2014-2018
	Enrolled	Voted	Rate (%)	Enrolled	Voted	Rate (%)	Change (p.p.)
Asian	-	-	-	-	-	-	-
American Indian/ Alaska Native	-	-	-	-	-	-	-
Black	-	-	-	-	-	-	-
Hispanic	-	-	-	-	-	-	-

Tables

The tables show, on the left-side columns, the numbers of students and the rates from 2016, 2018, and 2020. On the left-side, percentage point (p.p.) changes between 2016 and 2020. A red down arrow indicates a decrease, a green up arrow indicates an increase, and a yellow arrow pointing to the right indicates no change. "-" in these tables indicates that the data is unavailable/missing, or is available for 10 or less students.



Voting, Registration and Yield Rates

YOUR INSTITUTION

73.8%

2020 Voting Rate

+9.2

Change From 2016

ALL INSTITUTIONS

66%

2020 Voting Rate

REGISTRATION RATE

Year	Registration Rate
2016	79.7%
2018	75.7%
2020	85.5%

The **Registration Rate** is the percent of your voting-eligible students who registered to vote.

VOTING RATE OF REGISTERED STUDENTS

Year	Voting Rate of Registered Students
2016	81.1%
2018	61.9%
2020	86.3%

The **Voting Rate of Registered Students** is the percent of registered students who voted on Election Day. We often refer to this as the “yield” rate.

VOTING RATE

Year	Voting Rate
2016	64.6%
2018	46.9%
2020	73.8%

The **Voting Rate** is the percentage of eligible students who voted on Election Day. The voting rate is also the product of the registration and yield rates.

Looking Closer

Voting and Registration Rates

	2016	2018	2020	2016-2020 Change (p.p.)
Total Student Enrollment	8,065	7,700	6,961	↓ -1,104
(Age under 18/Unknown)	-	-	-	-
(NSC reported non-resident aliens)	275	243	130	↓ -145
(FERPA records blocked)	-	-	-	-
(Non-Degree Seeking Students)	104	141	114	↑ 10
Total eligible voters	7,679	7,314	6,707	↓ -972
Number of students who registered	6,117	5,537	5,736	↓ -381
Number of students who voted	4,960	3,428	4,951	↓ -9
Registration Rate %	80	76	86	↑ 6
Voting Rate of Registered Students %	81	62	86	↑ 5
Voting Rate %	65	47	74	↑ 9

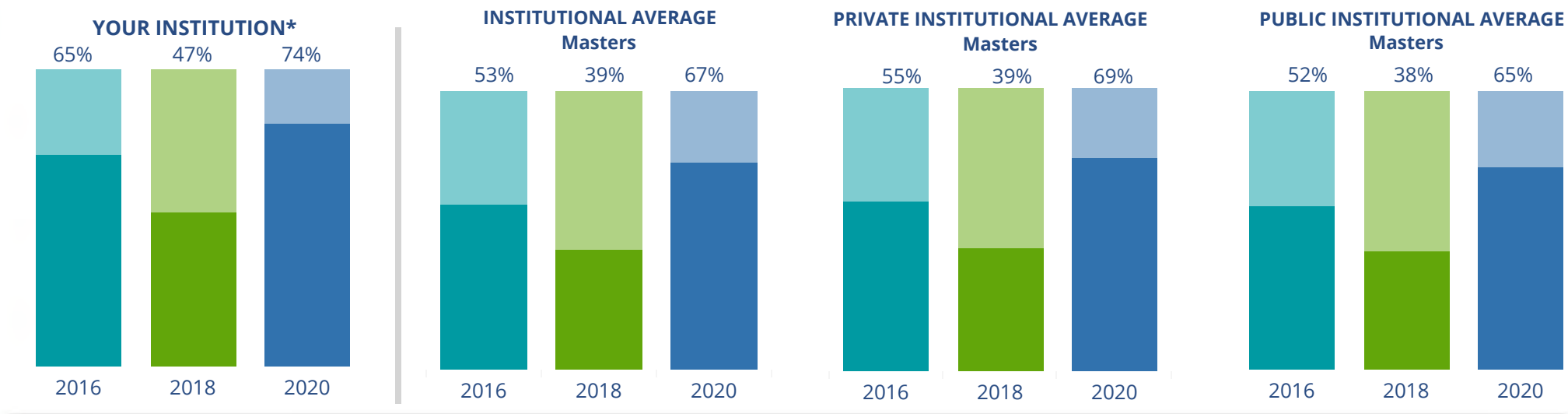
This page provides the numbers we used to calculate your voting, registration, and yield rates. The sub-categories under total student enrollment are the adjustments that we make to account for students who are ineligible to vote due to age or citizenship status. We also exclude, when correctly flagged, students who are not pursuing degrees.

We have removed non-resident aliens (international students) based on your institution's enrollment submission to the National Student Clearinghouse. This is indicated by "NSC reported non-resident aliens" on this page.

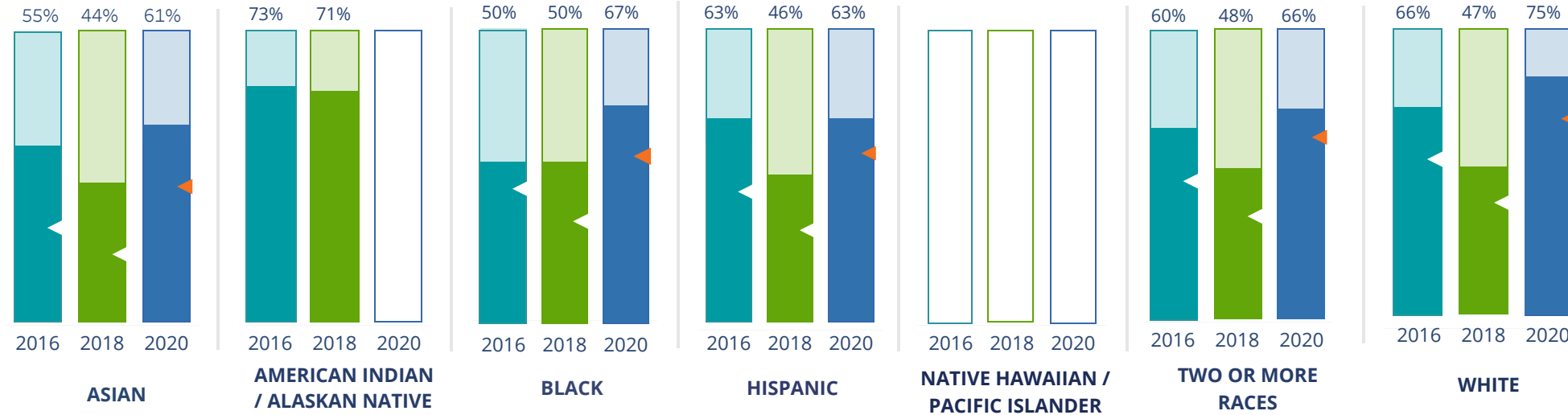
By Institution Types



These are estimated voting rates of your institution compared to the average voting rates of similar institutions in NSLVE. *"Your Institution" chart is presented at a different scale.



By Race / Ethnicity



These are estimated voting rates for race / ethnicity groups. These classifications are provided by campuses and are obtained following race reporting procedures* defined by the National Center for Education Statistics of the Institute of Education Sciences (IES). Please see our FAQ for more detail on why we cannot report national benchmark for some of the demographic groups:

<https://tufts.app.box.com/v/idhe-nsve-report-faq>

If you notice unavailable/missing data in this page, it could mean any of the following for your institution: (i) does not report this data; (ii) did not provide this data in past years; (iii) does not separately submit data for one or more of the demographic groups, or (iv) the data is reported for 10 or fewer students.

* <https://nces.ed.gov/ipeds/report-your-data/race-ethnicity-collecting-data-for-reporting-purposes>

Looking Closer

By Race/Ethnicity

This page provides the numbers we used to calculate race / ethnicity group voting rates. We

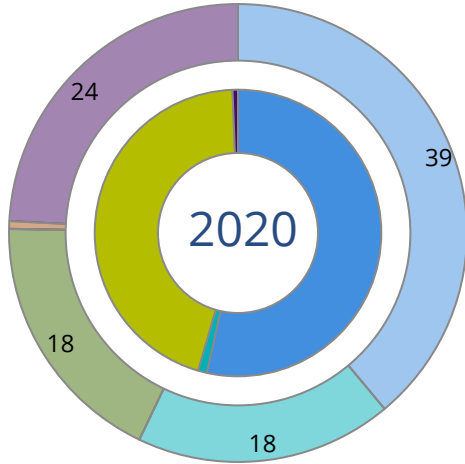
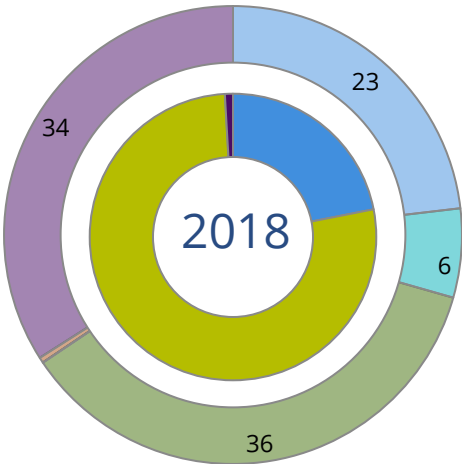
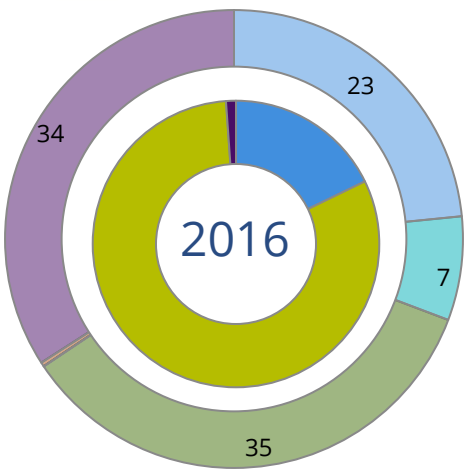
include the counts of students and the change in rates between the two most recent comparable election years.

If you notice unavailable/missing data in this page, it could mean any of the following for your institution: (i) does not report this data; (ii) did not provide this data in past years; (iii) does not separately submit data for one or more of the demographic groups, or (iv) the data is reported for 10 or fewer students.

	2016			2018			2020			2016-2020 Change (p.p)
	Enrolled	Voted	Rate	Enrolled	Voted	Rate	Enrolled	Voted	Rate	
Asian	186	102	55	170	74	44	198	121	61	↑ 6
American Indian/ Alaska Native	15	11	73	21	15	71	13	-	-	-
Black	221	110	50	237	118	50	226	151	67	↑ 17
Hispanic	227	143	63	282	129	46	293	185	63	↑ 0
Native Hawaiian/ Pacific Islander	-	-	-	-	-	-	-	-	-	-
2 or More Races	181	109	60	221	105	48	222	147	66	↑ 6
White	6,777	4,438	65	6,322	2,960	47	5,708	4,299	75	↑ 10
Race Unknown	67	46	69	56	26	46	47	39	83	↑ 14

By Voting Method

Not-In-Person Early Vote In-Person Other Provisional Unknown



	2016		2018		2020		2016-2020	
	Voted	Rate	Voted	Rate	Voted	Rate	Change (p.p.)	
Early Vote	–	–	–	–	48	1	–	
In-Person on Election Day	4,022	81	2,647	77	2,222	45	-36	↓
Not-In-Person	885	18	752	22	2,649	54	36	↑
Other	–	–	–	–	–	–	–	
Provisional	–	–	–	–	–	–	–	
Voting Method Unknown	53	1	29	1	32	1	-1	↓

These are estimated rates for vote method utilization, the number of students utilizing each method, and the percent of students utilizing each method. Not all U.S. states provide information on vote method; voting method for voter files from these states are classified “Voting Method Unknown.” For a list of these states, see our FAQ. <https://idhe.tufts.edu/nsive/nsive-faq#CampusReports>

By Age Group

	2016	2018	2020
18-21	64%	45%	74%
22-24	61%	45%	71%
25-29	64%	53%	74%
30-39	74%	61%	78%
40-49	80%	72%	81%
50+	91%	76%	87%

Voting is habit-forming and young voters will usually continue as voters in subsequent elections. Also, young voters are more likely to be contacted by campaigns and are visible, and therefore significant, to elected officials. While in the past, we have seen voting rates increase across age groups, in recent cycles, the most significant increases have been among first-time and the youngest voters. Some colleges serve primarily young students, traditionally viewed as students in the 18-21 or 22-24 categories here. Others have much higher numbers of enrolled older undergraduate or graduate students.

Looking Closer

By Age Group

Here, we provide the numbers of students in each age category and the voting rates for each group. These are based on the student's age on the day of the election, as calculated by the National Student Clearinghouse using data from student enrollment records.

	2016			2018			2020			2016-2020	
	Enrolled	Voted	Rate	Enrolled	Voted	Rate	Enrolled	Voted	Rate	Change (p.p)	
18-21	5,066	3,240	64	5,040	2,248	45	4,503	3,313	74	↑	10
22-24	1,462	893	61	1,202	535	45	1,129	804	71	↑	10
25-29	464	295	64	456	241	53	408	300	74	↑	10
30-39	422	311	74	382	232	61	426	334	78	↑	5
40-49	187	150	80	159	115	72	172	140	81	↑	1
50+	78	71	91	75	57	76	69	60	87	↓	-4

Looking Closer

By Sex

	2016			2018			2020			2016-2020	
	Enrolled	Voted	Rate	Enrolled	Voted	Rate	Enrolled	Voted	Rate	Change (p.p)	
Female	4,898	3,331	68	4,752	2,342	49	4,544	3,458	76	↑	8
Male	2,771	1,622	59	2,548	1,080	42	2,152	1,483	69	↑	10

These are estimated voting rates for sex groups and the numbers we used to calculate their voting rates. These classifications are provided by campuses and are obtained following the reporting procedures defined by the National Center for Education Statistics (NCES) of the Institute of Education Sciences (IES). Presently, NCES requires institutions to report students as “Male” or “Female” only.*

If you notice missing data in this page, it could mean any of the following for your institution: (i) does not report this data; (ii) did not provide this data in past years; (iii) does not separately submit data for one or more of the demographic groups, or (iv) the data is reported for 10 or fewer students.

*<https://surveys.nces.ed.gov/ipeds/public/survey-materials/faq?faqid=11>

Looking Closer

By Education Level / Undergraduate Class Year

	2016			2018			2020			2016-2020	
	Enrolled	Voted	Rate (%)	Enrolled	Voted	Rate (%)	Enrolled	Voted	Rate (%)	Change (p.p)	
EDUCATION LEVEL											
Undergraduate	7,217	4,634	64	6,856	3,147	46	6,080	4,452	73	↑	9
Graduate	280	203	73	352	217	62	532	425	80	↑	7
Class Unknown	182	123	68	106	64	60	95	74	78	↑	10
CLASS YEAR											
First Year	1,301	62	807	1,335	42	557	1,029	69	714	↑	7
Second Year	1,459	62	898	1,380	46	634	1,198	73	880	↑	12
Upper Level	4,400	65	2,874	4,075	47	1,907	3,792	74	2,812	↑	9
ENROLLMENT STATUS											
Full-time	6,703	4,293	64	6,405	2,934	46	5,798	4,277	74	↑	10
Part-time	976	667	68	909	494	54	909	674	74	↑	6

These are estimated voting rates by Education Level (undergraduate/graduate), Class Year, and Enrollment Status (full-time/part-time), and the numbers we used to calculate these rates.

If you notice missing data in this page, it could mean any of the following for your institution: (i) does not report this data; (ii) did not provide this data in past years; (iii) does not separately submit data for one or more of the demographic groups, or (iv) the data is reported for 10 or fewer students.

By Field of Study

FIELDS	2016			2018			2020			2016-2020 RateChange (p.p)
	Enrolled	Voted	Rate	Enrolled	Voted	Rate	Enrolled	Voted	Rate	
Biological and Biomedical Sciences	277	169	61	266	112	42	280	221	79	↑ 18
Business, Management, and Marketing	1,241	729	59	1,223	475	39	1,009	727	72	↑ 13
Communication and Journalism	335	229	68	301	145	48	248	188	76	↑ 7
Computer and Information Sciences	242	141	58	218	106	49	183	124	68	↑ 9
Education	1,177	811	69	1,171	591	50	1,111	846	76	↑ 7
Engineering and Engineering Technologies	121	68	56	112	50	45	99	63	64	↑ 7
English Language and Literature	66	52	79	74	50	68	66	52	79	→ 0


These are estimated voting rates by field of study, and the numbers we used to calculate the field of study rates. For an explanation of CIP codes, please see our FAQ.* There are roughly 8,000 fields of study among U.S. colleges and universities, so we provide rates for condensed categories.

*<https://tufts.app.box.com/v/idhe-nslve-report-faq>

By Field of Study

FIELDS	2016			2018			2020			2016-2020 Change (p.p)
	Enrolled	Voted	Rate	Enrolled	Voted	Rate	Enrolled	Voted	Rate	
Foreign Languages, Literatures, and Lingui..	40	27	68	47	27	57	43	33	77	↑ 9
Health Professions	1,800	1,240	69	1,645	791	48	1,614	1,208	75	↑ 6
History	40	24	60	30	15	50	35	25	71	↑ 11
Law Enforcement, Firefighting, and Protec..	194	113	58	201	76	38	147	92	63	↑ 4
Legal Professions and Studies	57	35	61	57	29	51	66	51	77	↑ 16
Liberal Arts and Sciences, and Humanities	324	183	56	240	99	41	219	149	68	↑ 12
Mathematics and Statistics	30	20	67	41	15	37	42	33	79	↑ 12
Multi/Interdisciplinary Studies	90	54	60	119	61	51	112	77	69	↑ 9
Parks, Recreation, Leisure, and Fitness Stu..	508	301	59	456	174	38	349	251	72	↑ 13
Physical Sciences	113	71	63	160	84	53	151	106	70	↑ 7
Psychology	303	191	63	299	149	50	311	233	75	↑ 12
Public Administration and Social Service P..	336	227	68	303	169	56	288	218	76	↑ 8
Social Sciences	134	96	72	114	80	70	70	60	86	↑ 14
Visual and Performing Arts	111	77	69	117	60	51	137	97	71	↑ 1

By Field of Study

FIELDS	2016			2018			2020			2016-2020	
	Enrolled	Voted	Rate	Enrolled	Voted	Rate	Enrolled	Voted	Rate	Change (p.p)	
Unknown	140	102	73	120	70	58	127	97	76		4

About This Report

Thank you for participating in the National Study of Learning, Voting, and Engagement.

Since NSLVE's launch in 2013, nearly 1,200 colleges and universities have signed up to receive their voting rates for the 2012, 2014, 2016, 2018, and 2020 federal elections.

Along with others, your institution's participation in this study has allowed us to build a robust database of over 50 million college student records, about 10 million for each election year, that serve as a foundation for innovative research on college student political learning and engagement in democracy.

NSLVE is a signature initiative of the Institute for Democracy and Higher Education (IDHE) at Tufts University's Jonathan M. Tisch College of Civic Life. The mission of IDHE is to shift college and university priorities and culture to advance political learning, agency, and equity. We achieve our mission through research, resource development, technical assistance, and advocacy.

About the Data

The voter registration and voting rates in this report reflect the percentage of your institution's students who were eligible to vote and who actually voted in the 2016, 2018, and 2020 elections.

These results are based on enrollment records your institution submitted to the National Student Clearinghouse (NSC) and publicly available voting files collected by L2 Political.

Enrollment lists are adjusted by deducting students under age 18 (at the time of the election), people identified as non-degree seeking and those identified by campuses as "nonresident aliens" (NRAs) (the federal government's category for mostly international students). Unfortunately, not all campuses report NRAs to NSC. For those campuses, we use IPEDS to calculate the number of NRA students on each campus and adjust NSC enrollment numbers to estimate the number of students to remove. We also quality check NRA removals by verifying that there is little to no discrepancy between the number of international students reported by the campus to IPEDS and to NSC. We cannot adjust subgroup analyses absent identification of NRAs verified by the process above. We welcome closer partnerships with individual colleges and universities to provide more accurate rates. For more on the data and the matching process, see our FAQ on Campus Reports.

Winona State University

Thank you for the work you do to improve your students' political learning and engagement. We hope that you find your NSLVE report useful. For up-to-date news on NSLVE data, resources, and to sign up for our newsletter visit: <https://idhe.tufts.edu>.

References: IDHE encourages report recipients to share this report as broadly as possible, including posting it on the college or university's website. When doing so, please use the following citation: Institute for Democracy & Higher Education: National Study of Learning, Voting and Engagement. (2021). 2016, 2018, and 2020 report for _____ [name of institution]. Medford, MA.



Barnum Hall
163 Packard Ave.
Medford, MA 02155

tischcollege@tufts.edu
617.627.3453



Institute for Democracy & Higher Education:
National Study of Learning, Voting, and Engagement
Barnum Hall, Medford, MA 02155

Follow Us on Twitter: @TuftsIDHE
NSLVE@tufts.edu
617.627.0620