

E2020 REPORT

CIVIC ENGAGEMENT ACTION PLAN/REPORT

WESLEYAN UNIVERSITY
SUBMITTED BY DIANA MARTINEZ
ASSISTANT DIRECTOR, JCCP

COORDINATING COMMITTEE

Primarily led by the Jewett Center for Community Partnerships staff, our E2020 Team consisted of dozens of folks—faculty, staff, student organizations, and students from across divisions on campus—working in collaboration with community officials, staff, and organizations.



INTRODUCTION



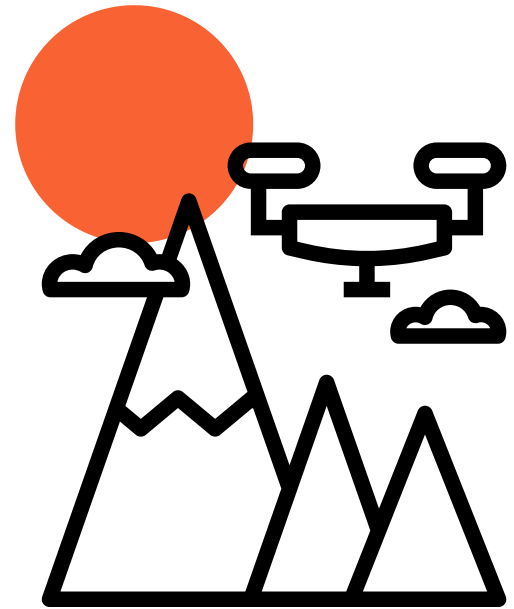
This report showcases Wesleyan University's election engagement efforts for 2020 and beyond. Outcomes from this year's efforts, as well as evolving campus needs and resources, will be incorporated into future plans as Wesleyan continues to participate in the NESAC Votes! ALL IN Challenge.

OVERVIEW

Wesleyan's civic engagement efforts span across campus. This year, Wesleyan University launched the Engage 2020 Initiative as a comprehensive University effort to support student learning via civic engagement and liberal arts education. Our voting committee worked closely with the City of Middletown and our campus partners. Wesleyan students and student groups, like the Wesleyan Student Assembly, organized voter registration and education efforts. Department leaders and faculty organized multiple election focused events across disciplines. Our E2020 initiative funded students to do electoral and issues advocacy work, supported faculty to create courses related to the 2020 election, and shared stories of engagement from colleges and universities across the country.

LANDSCAPE

Coronavirus and quarantine has altered the voting landscape, both on-campus and in community. We've had to reimagine how we think about voting and voter registration in a new context with many new restrictions. We have about 2800 students enrolled, with about 425 of them studying remotely. Nearly 30% of our students are People of Color. About 10% of our student body is made up of students ineligible to vote in the US.



CURRENT VOTING RATES

Our 2016 NSLVE Report indicates that while 85.2% of students were registered to vote, our voting rate was 56.6%. While this marked a 12.4% increase from 2012, our voting rate is still not comparable with the registration rate.



OUR GOALS

Wesleyan University's E2020 and civic engagement efforts were organized with the intent of increasing our voter rate to 70% or higher; creating opportunities for students to learn about and directly participate in electoral practices; cultivating spaces for engagement related discourse; and of connecting students with local civics related organizations and organizers.



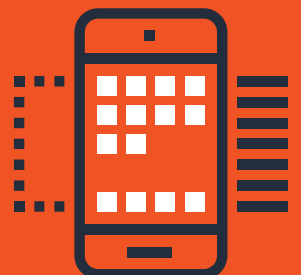
VOTER REGISTRATION AND OUTREACH

The WSA (Wesleyan Student Assembly) convened a Civic Engagement Taskforce comprised of leaders of civic engagement related student groups including members of:

- WSA Student Life Committee
- Wesleyan Democrats
- New Voters at Wesleyan
- Sunrise Movement Middletown Hub;
- Jewett Center for Community Partnerships Staff & Voter Engagement Intern
- WSA Community Committee
- Every Vote Counts
- #MoreVotesMoreVoices
- New Voters Project by Student PIRGs;

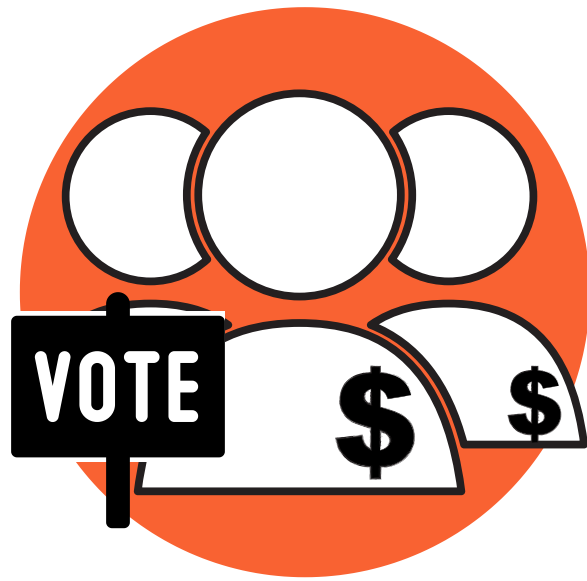
Together, the taskforce organized strategies for voter registration and education that included:

- Socially distanced voter registration station operating outside of our campus center every day during lunch and dinner time
 - We hired and trained Work-Study eligible students to register their peers, check registration status, and assist with absentee applications and ballots
 - The JCCP provided students with information on how and where to register, offered printing resources, as well as stamps and envelopes
- Social media campaigns (#WesVotes, #WesEngage2020) encouraging students to register
- Socially distanced "Storm the Dorm" efforts, engaging students in registering fellow students living in their dorms
- The taskforce created infographics with QR codes linking to voter education and registration sites that professors included in their online lecture slides
- The taskforce hosted Zoom info session events and phone banking events aimed at reminding fellow students to register, mail in their absentee ballots, and reminding them about on-campus voting resources
- The taskforce created a post election survey asking students about their experiences
- On Election Day, we're mobilizing students to "dorm stand" in front of larger dorms and campus spaces, directing students towards our on-campus voting site and/or to our on-campus Same Day Registration/Voting station.
 - The Same Day Registration is typically held at City Hall. This year, we partnered with our City Voter Registrar to make this service available to students on-campus, making it both easier for students to register and easing line congestion at City Hall.



E2020

This moment represents a unique opportunity for civic participation and liberal learning through engagement with the public sphere. Thus, we are joining forces with colleges and universities across the U.S. to reaffirm our collective responsibility as institutions of higher learning.



In an effort to support students working directly with campaigns, grassroots organizations, and initiatives focusing on electoral politics, Wesleyan offered students funds for expenses that may have otherwise been prohibitive to civic engagement--travel, food, clothing, etc. E2020 also supported faculty members in planning and implementing courses related to the election, or electoral politics. The initiative also enlisted a number of higher education institutions to sign onto our principles, and to share efforts happening on their campuses.

E2020 DATA



[WESLEYAN.EDU/E2020](https://www.wesleyan.edu/e2020)

Grant Recipients: 35

Majors Represented: 13

States Worked In: 15

Total Amount Awarded: \$52,336.09

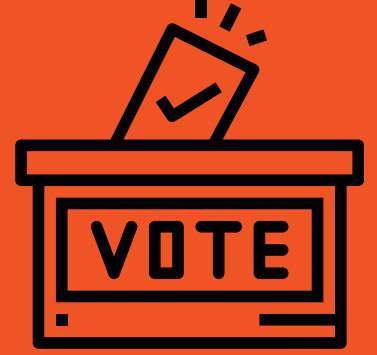
E2020 Courses:

Spring 2020: 17

Summer 2020: 1

Fall 2020: 24

Institutional Partners: 297



E2020 SPEAKER SERIES

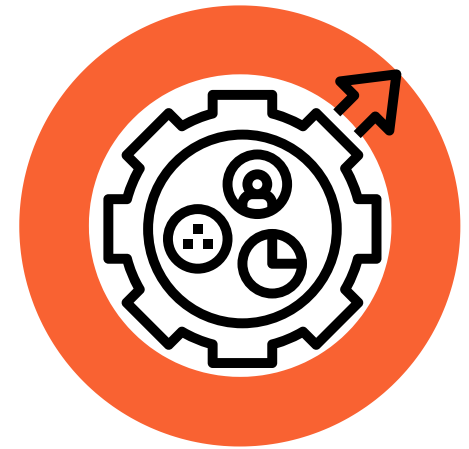
The E2020 Speaker Series features an array of public figures from diverse backgrounds - all with compelling messages about the power of students and young people to affect change and the urgency of this moment. The events were all online and were recorded for future access. Find out more here: wesleyan.edu/e2020/speakers-events.html

- 09/08: **Organizing Communities. Strategizing Politics. From The Arab Spring To Election 2020** with Esam Boraey
- 09/10: **Good Trouble: A New Generation Engages A New Political Season** with panelists, Bryan Chong '21, Simon Gaughan '22, & Devin Smith
- 09/15: **Don't Hate, Communicate! Part I**- How to discuss the election and stay friendly
- 09/24: **Film Screening of "Boy's State"**
- 09/29: **#E2020 Post-Debate Discussion** with Professors Dancey and Mark
- 10/01: **Criminal Justice and the 2020 Elections** with panelists Alicia Hernandez Strong '16, Lorenzo Jones, Julian Adler '02, Andrew Clark, and Earl Bloodworth
- 10/07: **Vice Presidential Post-Debate Discussion** with Professors Dancey, Fowler, and Moore
- 10/08: **Don't Hate, Communicate! Part II** with Dr. David Camppt
- 10/15: **The Era Footwork Crew: "Footwork Saves Lives"** Panel Discussion
- 10/20: **Our Country Our Votes: Young Voters Weigh-In on the Election, Election Coverage, and Political Discourse Today** with Graham Griffith and Kaari Pitkin
- 10/21: **#E2020 Final Presidential Debate Discussion**
- 10/22: **Religion, Diversity, and Democracy**, Eboo Patel in conversation with Michael Roth
- 10/23: **Dispatches from the Field: Voter Education and Registration in Battleground States**
- 10/26: **E2020 and WesGIS Event: Presidential Election Mapping**
- 10/27: **Kristina Wong: Reality Television, Political Theatre, and Social Change**
- 10/29: **Elections Under Threat: Perspectives and Prospects Panel/Conversation** with Wesleyan faculty on what we might expect to see come Election Day
- 11/03: **Election Results Watch Party**
- 11/10: **E2020 Reflection and Lessons Learned**

EVALUATION

At this point, we have collected some data we can report on:

- Total E2020 Grant Recipients
- Total E2020 Grant funds distributed
- Total number of E2020 related courses
- Total number of E2020 partner institutions



By the end of this academic year, we will be able to compile data around:

- Total voter turnout at our on-campus polling locations
- Total number of students helped by our tabling efforts
- Results of an exit poll designed by the Civic Engagement Taskforce
- Total number of students who enrolled in E2020 courses, and their course evaluations
- Final number of online speaker series events, and participant totals
- Final reports and evaluations from E2020 Grant Recipients

Once we receive our NSLVE 2020 report, we'll be able to determine:

- Voter Registration Rates
- Voting Rate

This data will be used to help inform our future voter engagement plans.

REPORTING



Once our action plan is completed and our NSLVE data is released, we plan on making our outcomes available to all of our campus and community partners by posting them on our website, and sharing through our newsletter and our social media networks.