



October 2021

Student Voting Rates for Weber State University

2020 NSLVE Campus Report

October 2021

Dear Colleagues:

We are pleased to send this tailored report containing your students' voting rates for 2020. This report contains three years of relevant topline data: 2016, 2018, and 2020. As always, we disaggregate the data so you can better identify and address gaps in participation.

College and university students participated in record-breaking numbers in the 2020 election. In 2016, the Average Institutional Voting Rate was 53%. This year, it jumped to 66%. We encourage you to review Democracy Counts 2020, our most recent national report.

As in past years, we urge you to share this report widely and strategically, particularly with faculty who, in 2020, were often the most consistent communicators with students about ever-changing voting conditions and deadlines. We also urge you to review our recommendations for engaging elections to cultivate a robust and healthy campus climate for political engagement, discourse, equity, and participation: Election Imperatives (2019) and the more recent Election Imperatives: A Time of Physical Distancing and Social Action. Since "pervasive political discussions" and attentiveness to the campus culture around speech and academic freedom are among our top recommendations, we direct you to our discussion guides on talking about your NSLVE report, on free speech and inclusion, and on hot topics, our Making Sense of ... guides.

Finally, we always encourage you to work with us. Help us help you get better data by reaching out. Email IDHE@Tufts.edu for more information. And as always, watch your inbox for our periodic newsletter, IDHE Update, for announcements about upcoming releases and new resources.

Congratulations on engaging your students in the 2020 election. Remember, student political learning is a year-round objective. Elections may be episodic, but student political engagement should not be.

All the Best,
IDHE Team



(Top Row from left) Duy Trinh, Program Administrator; Adam Gismondi, Director of Impact; Dave Brinker, Senior Researcher;
(Bottom Row from left) Nancy Thomas, Director; Norma López, Postdoctoral Scholar; Prabhat Gautam, Data Manager.

We also want to acknowledge and thank **Syed Golam Mohaimen, M.S. student in Data Science at Tufts University** for his contributions toward the creation of these reports.

In This Report

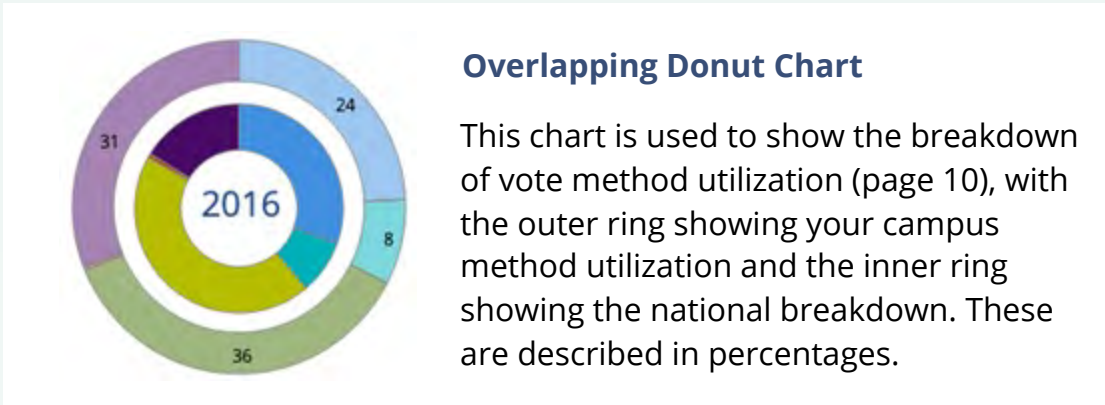
This report presents data on student voter participation rates for your campus. The topline counts on page 5 tells you how many students voted, but we encourage you to look carefully at the data on subsequent pages to learn who voted. Data are presented in the form of vessel charts, overlapping donut charts, and tables.



	2014			2018			2014-2018 Change (p.p.)
	Enrolled	Voted	Rate (%)	Enrolled	Voted	Rate (%)	
Asian	-	-	-	-	-	-	-
American Indian/ Alaska Native	-	-	-	-	-	-	-
Black	-	-	-	-	-	-	-
Hispanic	-	-	-	-	-	-	-

Tables

The tables show, on the left-side columns, the numbers of students and the rates from 2016, 2018, and 2020. On the left-side, percentage point (p.p.) changes between 2016 and 2020. A red down arrow indicates a decrease, a green up arrow indicates an increase, and a yellow arrow pointing to the right indicates no change. "-" in these tables indicates that the data is unavailable/missing, or is available for 10 or less students.



Voting, Registration and Yield Rates

YOUR INSTITUTION

50.3%

2020 Voting Rate

+3.7

Change From 2016

ALL INSTITUTIONS

66%

2020 Voting Rate

REGISTRATION RATE

Year	Rate
2016	63.9%
2018	64.2%
2020	69.0%

The **Registration Rate** is the percent of your voting-eligible students who registered to vote.

VOTING RATE OF REGISTERED STUDENTS

Year	Rate
2016	72.8%
2018	56.0%
2020	72.8%

The **Voting Rate of Registered Students** is the percent of registered students who voted on Election Day. We often refer to this as the “yield” rate.

VOTING RATE

Year	Rate
2016	46.6%
2018	35.9%
2020	50.3%

The **Voting Rate** is the percentage of eligible students who voted on Election Day. The voting rate is also the product of the registration and yield rates.

Looking Closer

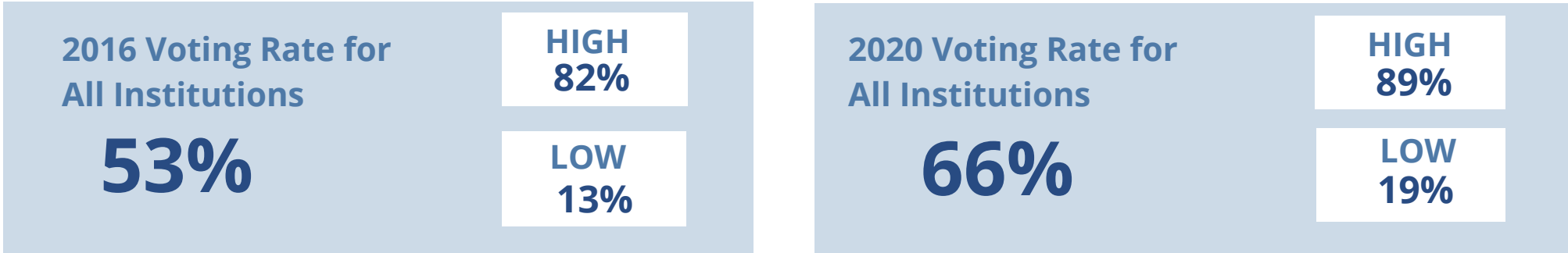
Voting and Registration Rates

	2016	2018	2020	2016-2020 Change (p.p.)
Total Student Enrollment	18,987	19,285	18,848	↓ -140
(Age under 18/Unknown)	12	16	40	↑ 28
(IPEDS estimated non-resident aliens)	393	344	265	↓ -128
(FERPA records blocked)	154	144	89	↓ -65
(Non-Degree Seeking Students)	225	226	273	↑ 48
Total eligible voters	18,203	18,555	18,181	↓ -23
Number of students who registered	11,641	11,921	12,553	↑ 912
Number of students who voted	8,478	6,670	9,143	↑ 665
Registration Rate %	64	64	69	↑ 5
Voting Rate of Registered Students %	73	56	73	↑ 0
Voting Rate %	47	36	50	↑ 4

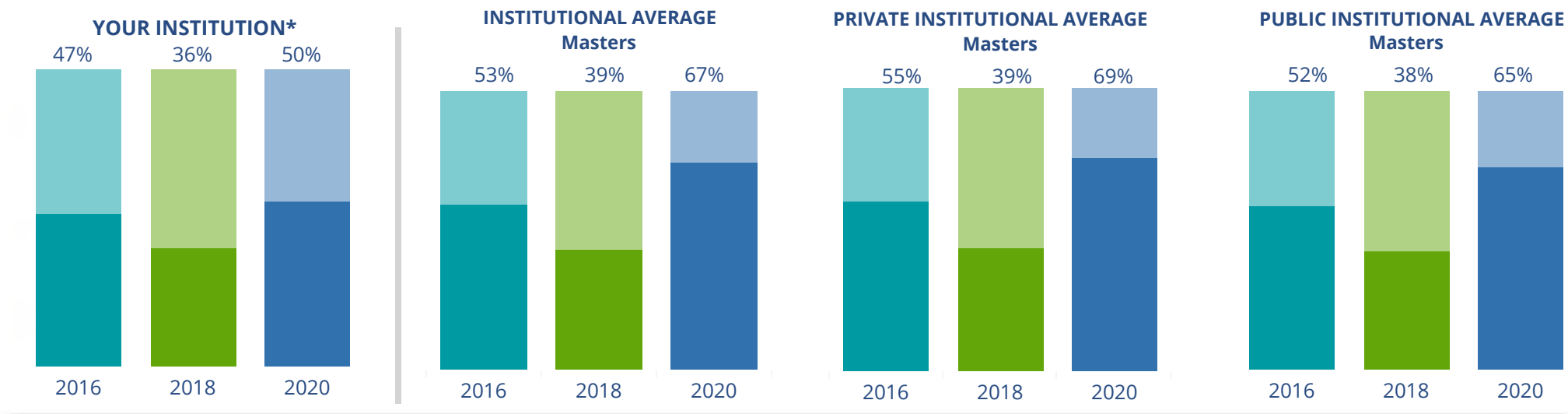
This page provides the numbers we used to calculate your voting, registration, and yield rates. The sub-categories under total student enrollment are the adjustments that we make to account for students who are ineligible to vote due to age or citizenship status. We also exclude, when correctly flagged, students who are not pursuing degrees.

We use IPEDS-derived estimates of NRAs when institutions do not submit non-resident alien status data to NSC, or we cannot verify the accuracy of the reported counts. This estimate is given by "IPEDS estimated non-resident aliens" on this page. If you believe the number of international students reported on this report is incorrect, you can manually adjust your institution's voting rates by using our recalculation tool. <https://id-he.tufts.edu/nsive/nsive-recalculation-tool>.

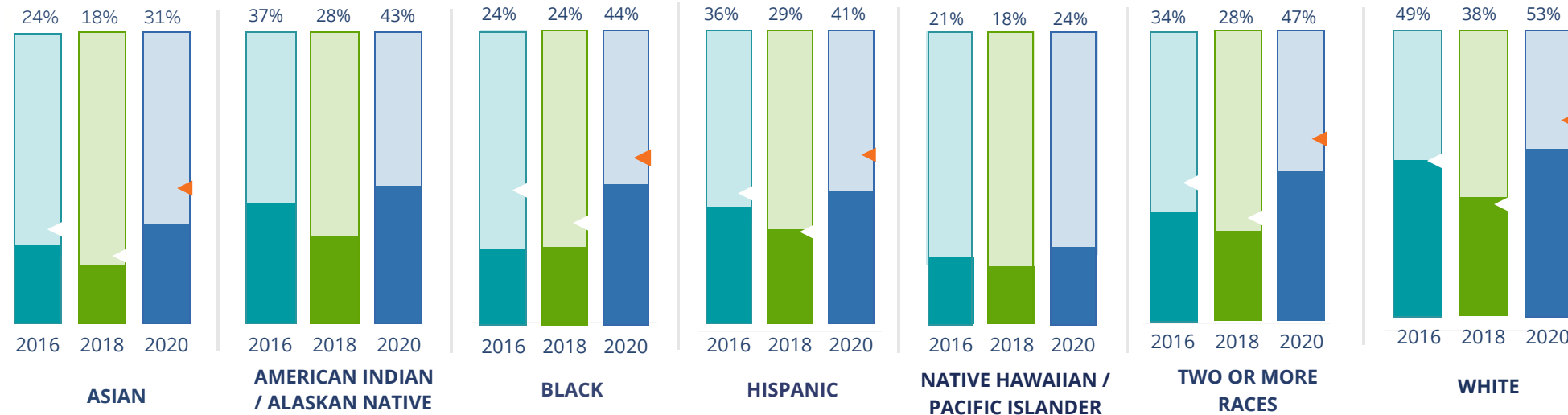
By Institution Types



These are estimated voting rates of your institution compared to the average voting rates of similar institutions in NSLVE. *"Your Institution" chart is presented at a different scale.



By Race / Ethnicity



These are estimated voting rates for race / ethnicity groups. These classifications are provided by campuses and are obtained following race reporting procedures* defined by the National Center for Education Statistics of the Institute of Education Sciences (IES). Please see our FAQ for more detail on why we cannot report national benchmark for some of the demographic groups:

<https://tufts.app.box.com/v/idhe-nsve-report-faq>

If you notice unavailable/missing data in this page, it could mean any of the following for your institution: (i) does not report this data; (ii) did not provide this data in past years; (iii) does not separately submit data for one or more of the demographic groups, or (iv) the data is reported for 10 or fewer students.

* <https://nces.ed.gov/ipeds/report-your-data/race-ethnicity-collecting-data-for-reporting-purposes>

Looking Closer

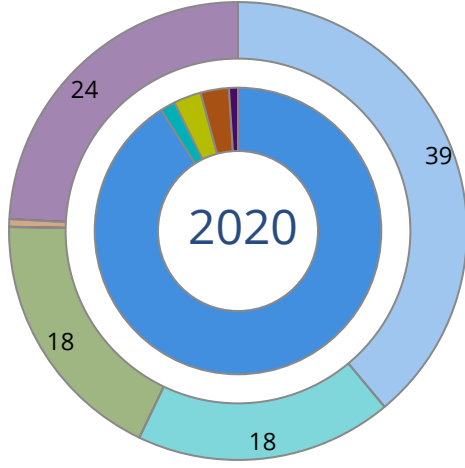
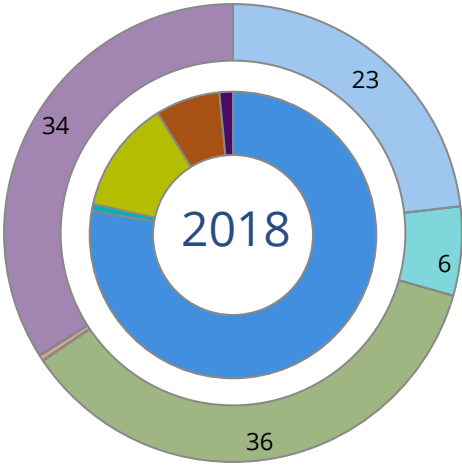
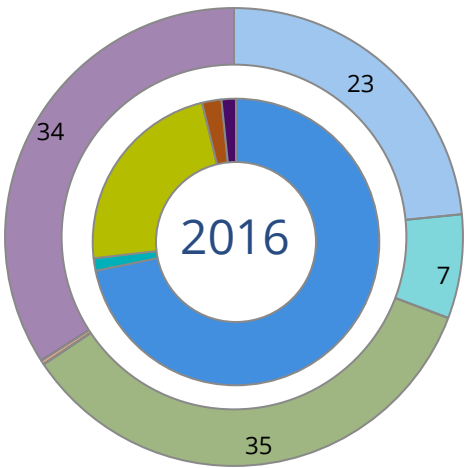
By Race/Ethnicity

This page provides the numbers we used to calculate race / ethnicity group voting rates. We include the counts of students and the change in rates between the two most recent comparable election years. If you notice unavailable/missing data in this page, it could mean any of the following for your institution: (i) does not report this data; (ii) did not provide this data in past years; (iii) does not separately submit data for one or more of the demographic groups, or (iv) the data is reported for 10 or fewer students.

	2016			2018			2020			2016-2020
	Enrolled	Voted	Rate	Enrolled	Voted	Rate	Enrolled	Voted	Rate	Change (p.p)
Asian	405	99	24	400	73	18	385	119	31	↑ 6
American Indian/ Alaska Native	97	36	37	109	30	28	101	43	43	↑ 5
Black	331	78	24	340	82	24	331	144	44	↑ 20
Hispanic	1,940	701	36	2,145	627	29	2,157	882	41	↑ 5
Native Hawaiian/ Pacific Islander	105	22	21	106	19	18	99	24	24	↑ 3
2 or More Races	471	161	34	562	159	28	643	301	47	↑ 13
White	13,340	6,550	49	13,771	5,163	37	13,455	7,100	53	↑ 4
Race Unknown	1,788	831	46	1,353	517	38	1,176	530	45	↓ -1

By Voting Method

Not-In-Person Early Vote In-Person Other Provisional Unknown



	2016		2018		2020		2016-2020	
	Voted	Rate	Voted	Rate	Voted	Rate	Change (p.p.)	
Early Vote	117	1	56	1	158	2	0	↑
In-Person on Election Day	1,952	23	845	13	284	3	-20	↓
Not-In-Person	6,088	72	5,183	78	8,322	91	19	↑
Other	-	-	-	-	-	-	-	
Provisional	183	2	488	7	296	3	1	↑
Voting Method Unknown	138	2	98	2	83	1	-1	↓

These are estimated rates for vote method utilization, the number of students utilizing each method, and the percent of students utilizing each method. Not all U.S. states provide information on vote method; voting method for voter files from these states are classified "Voting Method Unknown." For a list of these states, see our FAQ. <https://idhe.tufts.edu/nsive/nsive-faq#CampusReports>

By Age Group

	2016	2018	2020
18-21	37%	30%	48%
22-24	46%	35%	49%
25-29	47%	35%	50%
30-39	54%	41%	52%
40-49	64%	52%	61%
50+	78%	67%	66%

Voting is habit-forming and young voters will usually continue as voters in subsequent elections. Also, young voters are more likely to be contacted by campaigns and are visible, and therefore significant, to elected officials. While in the past, we have seen voting rates increase across age groups, in recent cycles, the most significant increases have been among first-time and the youngest voters. Some colleges serve primarily young students, traditionally viewed as students in the 18-21 or 22-24 categories here. Others have much higher numbers of enrolled older undergraduate or graduate students.

Looking Closer

By Age Group

Here, we provide the numbers of students in each age category and the voting rates for each group. These are based on the student's age on the day of the election, as calculated by the National Student Clearinghouse using data from student enrollment records.

	2016			2018			2020			2016-2020	
	Enrolled	Voted	Rate	Enrolled	Voted	Rate	Enrolled	Voted	Rate	Change (p.p)	
18-21	6,957	2,588	37	7,651	2,291	30	8,129	3,879	48	↑	11
22-24	3,890	1,798	46	4,072	1,439	35	3,894	1,899	49	↑	3
25-29	3,307	1,545	47	3,009	1,040	35	2,840	1,408	50	↑	3
30-39	2,820	1,519	54	2,500	1,018	41	2,177	1,141	52	↓	-1
40-49	1,051	675	64	1,099	575	52	969	593	61	↓	-3
50+	452	353	78	455	307	67	338	223	66	↓	-12

Looking Closer

By Sex

	2016			2018			2020			2016-2020	
	Enrolled	Voted	Rate	Enrolled	Voted	Rate	Enrolled	Voted	Rate	Change (p.p)	
Female	10,019	4,617	46	10,432	3,774	36	10,502	5,238	50	↑	4
Male	8,458	3,861	46	8,348	2,895	35	7,845	3,905	50	↑	4

These are estimated voting rates for sex groups and the numbers we used to calculate their voting rates. These classifications are provided by campuses and are obtained following the reporting procedures defined by the National Center for Education Statistics (NCES) of the Institute of Education Sciences (IES). Presently, NCES requires institutions to report students as “Male” or “Female” only.*

If you notice missing data in this page, it could mean any of the following for your institution: (i) does not report this data; (ii) did not provide this data in past years; (iii) does not separately submit data for one or more of the demographic groups, or (iv) the data is reported for 10 or fewer students.

*<https://surveys.nces.ed.gov/ipeds/public/survey-materials/faq?faqid=11>

Looking Closer

By Education Level / Undergraduate Class Year

	2016			2018			2020			2016-2020	
	Enrolled	Voted	Rate (%)	Enrolled	Voted	Rate (%)	Enrolled	Voted	Rate (%)	Change (p.p)	
EDUCATION LEVEL											
Undergraduate	16,111	7,172	45	16,544	5,755	35	16,106	8,115	50	↑	6
Graduate	612	407	67	633	299	47	725	420	58	↓	-9
Class Unknown	1,754	899	51	1,609	616	38	1,516	608	40	↓	-11
CLASS YEAR											
First Year	-	-	-	-	-	-	-	-	-	-	-
Second Year	-	-	-	-	-	-	-	-	-	-	-
Upper Level	-	-	-	-	-	-	-	-	-	-	-
ENROLLMENT STATUS											
Full-time	11,046	4,807	44	10,894	3,700	34	11,093	5,571	50	↑	7
Part-time	7,431	3,671	49	7,892	2,970	38	7,254	3,572	49	↓	0

These are estimated voting rates by Education Level (undergraduate/graduate), Class Year, and Enrollment Status (full-time/part-time), and the numbers we used to calculate these rates.

If you notice missing data in this page, it could mean any of the following for your institution: (i) does not report this data; (ii) did not provide this data in past years; (iii) does not separately submit data for one or more of the demographic groups, or (iv) the data is reported for 10 or fewer students.

By Field of Study

FIELDS	2016			2018			2020			2016-2020 RateChange (p.p)
	Enrolled	Voted	Rate	Enrolled	Voted	Rate	Enrolled	Voted	Rate	
Architecture	-	-	-	-	-	-	34	17	50	-
Biological and Biomedical Sciences	567	245	43	612	220	36	677	334	49	↑ 6
Business, Management, and Marketing	1,963	884	45	2,175	742	34	2,133	1,056	50	↑ 4
Communication and Journalism	395	193	49	485	201	41	421	229	54	↑ 6
Computer and Information Sciences	907	402	44	929	317	34	1,057	515	49	↑ 4
Education	994	506	51	935	377	40	996	536	54	↑ 3
Engineering and Engineering Technologies	1,017	449	44	994	338	34	950	469	49	↑ 5

These are estimated voting rates by field of study, and the numbers we used to calculate the field of study rates. For an explanation of CIP codes, please see our FAQ.* There are roughly 8,000 fields of study among U.S. colleges and universities, so we provide rates for condensed categories.

*<https://tufts.app.box.com/v/idhe-nslve-report-faq>

By Field of Study

FIELDS	2016			2018			2020			2016-2020 Change (p.p)
	Enrolled	Voted	Rate	Enrolled	Voted	Rate	Enrolled	Voted	Rate	
English Language and Literature	287	162	56	261	130	50	292	168	58	↑ 1
Family and Consumer/Human Sciences	199	95	48	248	94	38	299	161	54	↑ 6
Foreign Languages, Literatures, and Lingui..	224	126	56	184	84	46	152	89	59	↑ 2
Health Professions	4,094	1,816	44	4,374	1,410	32	4,568	2,307	51	↑ 6
History	94	54	57	88	49	56	91	56	62	↑ 4
Law Enforcement, Firefighting, and Protec..	584	231	40	541	176	33	592	284	48	↑ 8
Liberal Arts and Sciences, and Humanities	3,007	1,362	45	2,943	1,019	35	2,086	1,035	50	↑ 4
Mathematics and Statistics	49	23	47	118	50	42	139	75	54	↑ 7
Mechanic and Repair Technologies/Techni..	66	18	27	59	19	32	54	27	50	↑ 23
Natural Resources and Conservation	-	-	-	-	-	-	17	-	-	-
Parks, Recreation, Leisure, and Fitness Stu..	197	74	38	239	66	28	255	130	51	↑ 13
Philosophy and Religious Studies	12	-	-	22	-	-	19	-	-	-
Physical Sciences	235	108	46	192	79	41	147	81	55	↑ 9
Psychology	467	188	40	472	144	31	537	284	53	↑ 13

By Field of Study

FIELDS	2016			2018			2020			2016-2020	
	Enrolled	Voted	Rate	Enrolled	Voted	Rate	Enrolled	Voted	Rate	Change (p.p)	
Public Administration and Social Service Professions	247	130	53	272	118	43	304	145	48	↓	-5
Science Technologies/Technicians	57	26	46	101	34	34	69	36	52	↑	7
Social Sciences	382	157	41	326	138	42	289	147	51	↑	10
Visual and Performing Arts	485	232	48	561	220	39	612	314	51	↑	3
Unknown	1,791	911	51	1,655	635	38	1,557	634	41	↓	-10

About This Report

Thank you for participating in the National Study of Learning, Voting, and Engagement.

Since NSLVE's launch in 2013, nearly 1,200 colleges and universities have signed up to receive their voting rates for the 2012, 2014, 2016, 2018, and 2020 federal elections.

Along with others, your institution's participation in this study has allowed us to build a robust database of over 50 million college student records, about 10 million for each election year, that serve as a foundation for innovative research on college student political learning and engagement in democracy.

NSLVE is a signature initiative of the Institute for Democracy and Higher Education (IDHE) at Tufts University's Jonathan M. Tisch College of Civic Life. The mission of IDHE is to shift college and university priorities and culture to advance political learning, agency, and equity. We achieve our mission through research, resource development, technical assistance, and advocacy.

About the Data

The voter registration and voting rates in this report reflect the percentage of your institution's students who were eligible to vote and who actually voted in the 2016, 2018, and 2020 elections.

These results are based on enrollment records your institution submitted to the National Student Clearinghouse (NSC) and publicly available voting files collected by L2 Political.

Enrollment lists are adjusted by deducting students under age 18 (at the time of the election), people identified as non-degree seeking and those identified by campuses as "nonresident aliens" (NRAs) (the federal government's category for mostly international students). Unfortunately, not all campuses report NRAs to NSC. For those campuses, we use IPEDS to calculate the number of NRA students on each campus and adjust NSC enrollment numbers to estimate the number of students to remove. We also quality check NRA removals by verifying that there is little to no discrepancy between the number of international students reported by the campus to IPEDS and to NSC. We cannot adjust subgroup analyses absent identification of NRAs verified by the process above. We welcome closer partnerships with individual colleges and universities to provide more accurate rates. For more on the data and the matching process, see our FAQ on Campus Reports.

Weber State University

Thank you for the work you do to improve your students' political learning and engagement. We hope that you find your NSLVE report useful. For up-to-date news on NSLVE data, resources, and to sign up for our newsletter visit: <https://idhe.tufts.edu>.

References: IDHE encourages report recipients to share this report as broadly as possible, including posting it on the college or university's website. When doing so, please use the following citation: Institute for Democracy & Higher Education: National Study of Learning, Voting and Engagement. (2021). 2016, 2018, and 2020 report for _____ [name of institution]. Medford, MA.



Barnum Hall
163 Packard Ave.
Medford, MA 02155

tischcollege@tufts.edu
617.627.3453



Institute for Democracy & Higher Education:
National Study of Learning, Voting, and Engagement
Barnum Hall, Medford, MA 02155

Follow Us on Twitter: @TuftsIDHE
NSLVE@tufts.edu
617.627.0620