



October 2021

Student Voting Rates for University Of Wyoming

2020 NSLVE Campus Report

October 2021

Dear Colleagues:

We are pleased to send this tailored report containing your students' voting rates for 2020. This report contains three years of relevant topline data: 2016, 2018, and 2020. As always, we disaggregate the data so you can better identify and address gaps in participation.

College and university students participated in record-breaking numbers in the 2020 election. In 2016, the Average Institutional Voting Rate was 53%. This year, it jumped to 66%. We encourage you to review Democracy Counts 2020, our most recent national report.

As in past years, we urge you to share this report widely and strategically, particularly with faculty who, in 2020, were often the most consistent communicators with students about ever-changing voting conditions and deadlines. We also urge you to review our recommendations for engaging elections to cultivate a robust and healthy campus climate for political engagement, discourse, equity, and participation: Election Imperatives (2019) and the more recent Election Imperatives: A Time of Physical Distancing and Social Action. Since "pervasive political discussions" and attentiveness to the campus culture around speech and academic freedom are among our top recommendations, we direct you to our discussion guides on talking about your NSLVE report, on free speech and inclusion, and on hot topics, our Making Sense of ... guides.

Finally, we always encourage you to work with us. Help us help you get better data by reaching out. Email IDHE@Tufts.edu for more information. And as always, watch your inbox for our periodic newsletter, IDHE Update, for announcements about upcoming releases and new resources.

Congratulations on engaging your students in the 2020 election. Remember, student political learning is a year-round objective. Elections may be episodic, but student political engagement should not be.

All the Best,
IDHE Team

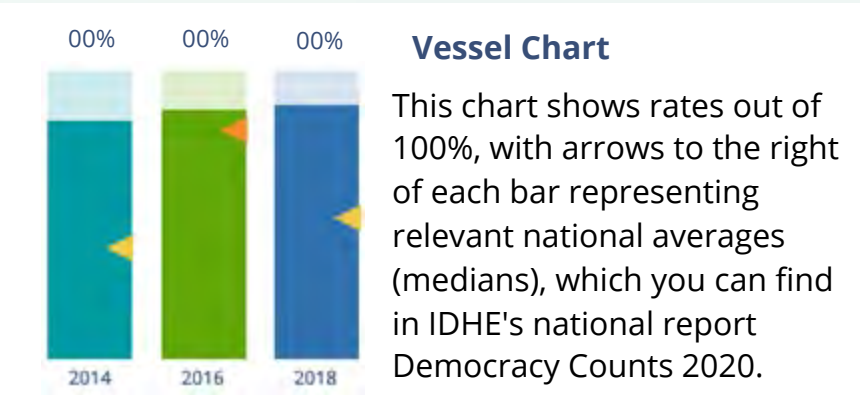


(Top Row from left) Duy Trinh, Program Administrator; Adam Gismondi, Director of Impact; Dave Brinker, Senior Researcher;
(Bottom Row from left) Nancy Thomas, Director; Norma López, Postdoctoral Scholar; Prabhat Gautam, Data Manager.

We also want to acknowledge and thank **Syed Golam Mohaimen, M.S. student in Data Science at Tufts University** for his contributions toward the creation of these reports.

In This Report

This report presents data on student voter participation rates for your campus. The topline counts on page 5 tells you how many students voted, but we encourage you to look carefully at the data on subsequent pages to learn who voted. Data are presented in the form of vessel charts, overlapping donut charts, and tables.



	2014			2018			2014-2018 Change (p.p.)
	Enrolled	Voted	Rate (%)	Enrolled	Voted	Rate (%)	
Asian	-	-	-	-	-	-	-
American Indian/ Alaska Native	-	-	-	-	-	-	-
Black	-	-	-	-	-	-	-
Hispanic	-	-	-	-	-	-	-

Tables

The tables show, on the left-side columns, the numbers of students and the rates from 2016, 2018, and 2020. On the left-side, percentage point (p.p.) changes between 2016 and 2020. A red down arrow indicates a decrease, a green up arrow indicates an increase, and a yellow arrow pointing to the right indicates no change. "-" in these tables indicates that the data is unavailable/missing, or is available for 10 or less students.



Voting, Registration and Yield Rates

YOUR INSTITUTION

63.0%

2020 Voting Rate

+14.4

Change From 2016

ALL INSTITUTIONS

66%

2020 Voting Rate

REGISTRATION RATE

Year	Rate
2016	63.6%
2018	61.3%
2020	75.9%

The **Registration Rate** is the percent of your voting-eligible students who registered to vote.

VOTING RATE OF REGISTERED STUDENTS

Year	Rate
2016	76.4%
2018	54.2%
2020	83.0%

The **Voting Rate of Registered Students** is the percent of registered students who voted on Election Day. We often refer to this as the “yield” rate.

VOTING RATE

Year	Rate
2016	48.6%
2018	33.2%
2020	63.0%

The **Voting Rate** is the percentage of eligible students who voted on Election Day. The voting rate is also the product of the registration and yield rates.

Looking Closer

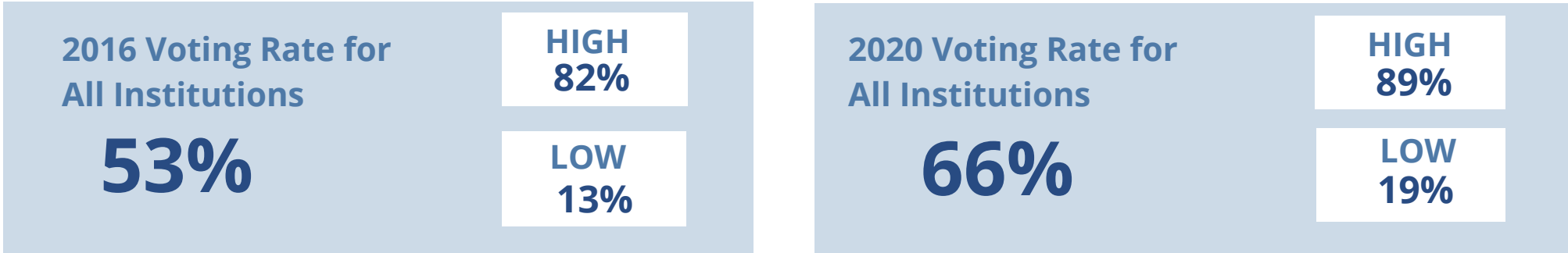
Voting and Registration Rates

	2016	2018	2020	2016-2020 Change (p.p.)
Total Student Enrollment	12,991	12,220	11,672	↓ -1,319
(Age under 18/Unknown)	-	-	-	-
(IPEDS estimated non-resident aliens)	841	692	501	↓ -340
(FERPA records blocked)	27	25	19	↓ -8
(Non-Degree Seeking Students)	-	341	423	-
Total eligible voters	12,117	11,162	10,729	↓ -1,388
Number of students who registered	7,709	6,844	8,145	↑ 436
Number of students who voted	5,889	3,707	6,761	↑ 872
Registration Rate %	64	61	76	↑ 12
Voting Rate of Registered Students %	76	54	83	↑ 7
Voting Rate %	49	33	63	↑ 14

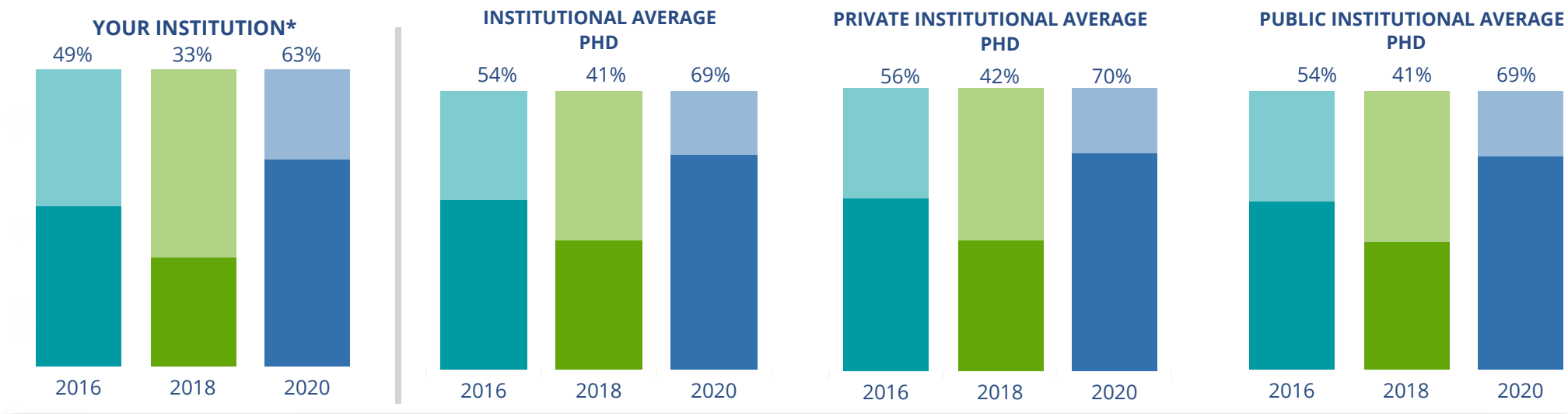
This page provides the numbers we used to calculate your voting, registration, and yield rates. The sub-categories under total student enrollment are the adjustments that we make to account for students who are ineligible to vote due to age or citizenship status. We also exclude, when correctly flagged, students who are not pursuing degrees.

We use IPEDS-derived estimates of NRAs when institutions do not submit non-resident alien status data to NSC, or we cannot verify the accuracy of the reported counts. This estimate is given by "IPEDS estimated non-resident aliens" on this page. If you believe the number of international students reported on this report is incorrect, you can manually adjust your institution's voting rates by using our recalculation tool. <https://id-he.tufts.edu/nsive/nsive-recalculation-tool>.

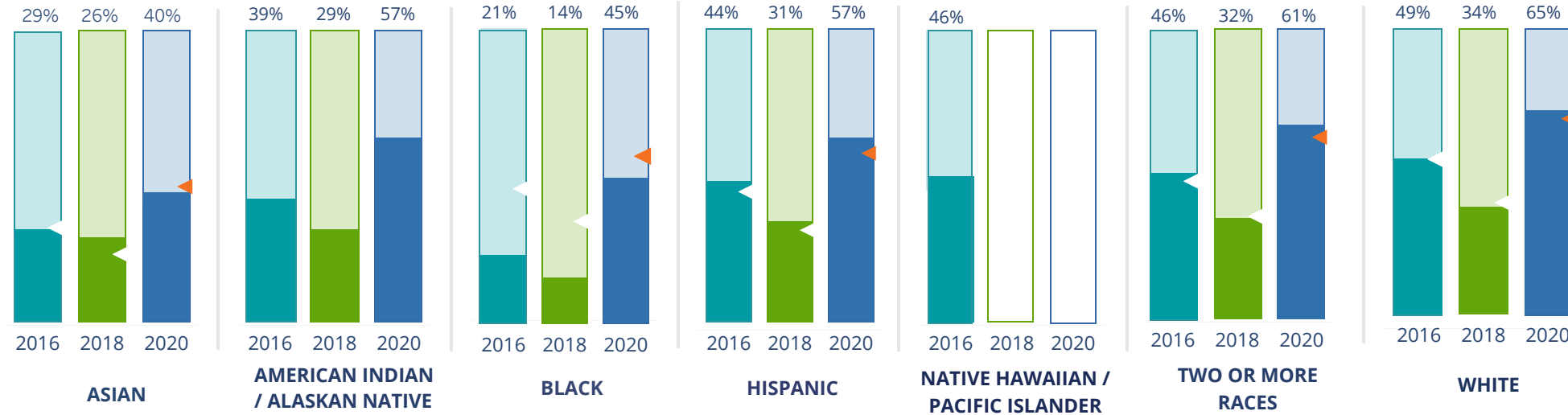
By Institution Types



These are estimated voting rates of your institution compared to the average voting rates of similar institutions in NSLVE. *"Your Institution" chart is presented at a different scale.



By Race / Ethnicity



These are estimated voting rates for race / ethnicity groups. These classifications are provided by campuses and are obtained following race reporting procedures* defined by the National Center for Education Statistics of the Institute of Education Sciences (IES). Please see our FAQ for more detail on why we cannot report national benchmark for some of the demographic groups:

<https://tufts.app.box.com/v/idhe-nsve-report-faq>

If you notice unavailable/missing data in this page, it could mean any of the following for your institution: (i) does not report this data; (ii) did not provide this data in past years; (iii) does not separately submit data for one or more of the demographic groups, or (iv) the data is reported for 10 or fewer students.

* <https://nces.ed.gov/ipeds/report-your-data/race-ethnicity-collecting-data-for-reporting-purposes>

Looking Closer

By Race/Ethnicity

This page provides the numbers we used to calculate race / ethnicity group voting rates. We

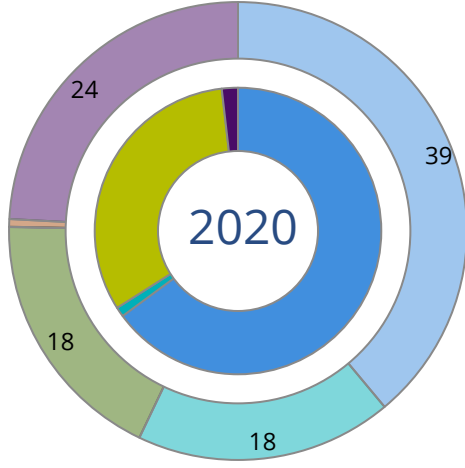
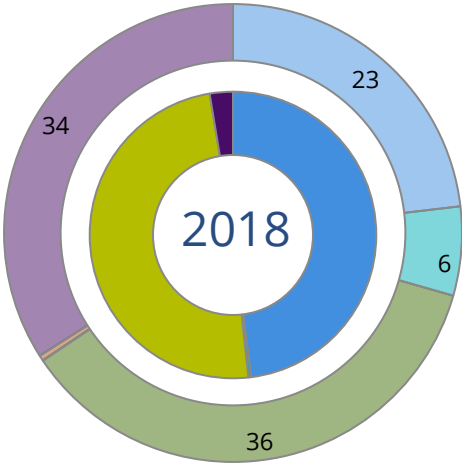
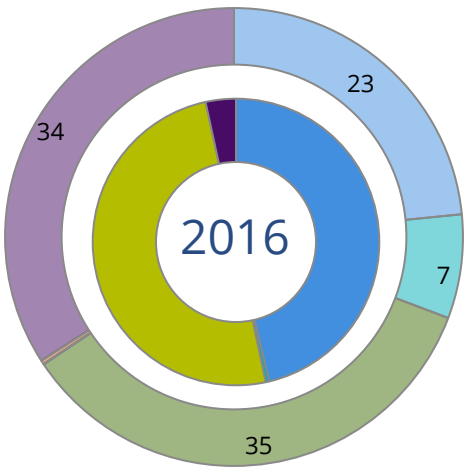
include the counts of students and the change in rates between the two most recent comparable election years.

If you notice unavailable/missing data in this page, it could mean any of the following for your institution: (i) does not report this data; (ii) did not provide this data in past years; (iii) does not separately submit data for one or more of the demographic groups, or (iv) the data is reported for 10 or fewer students.

	2016			2018			2020			2016-2020 Change (p.p)
	Enrolled	Voted	Rate	Enrolled	Voted	Rate	Enrolled	Voted	Rate	
Asian	186	54	29	152	40	26	149	60	40	↑ 11
American Indian/ Alaska Native	78	30	38	62	18	29	75	43	57	↑ 19
Black	122	26	21	112	16	14	120	54	45	↑ 24
Hispanic	782	340	43	722	226	31	688	391	57	↑ 13
Native Hawaiian/ Pacific Islander	24	11	46	14	–	–	11	–	–	–
2 or More Races	508	233	46	581	185	32	521	319	61	↑ 15
White	9,353	4,599	49	8,316	2,826	34	8,254	5,332	65	↑ 15
Race Unknown	1,902	596	31	1,874	390	21	1,393	556	40	↑ 9

By Voting Method

Not-In-Person Early Vote In-Person Other Provisional Unknown



	2016		2018		2020		2016-2020	
	Voted	Rate	Voted	Rate	Voted	Rate	Change (p.p.)	
Early Vote	21	0	12	0	71	1	1	↑
In-Person on Election Day	2,941	50	1,819	49	2,174	32	-18	↓
Not-In-Person	2,725	46	1,778	48	4,388	65	19	↑
Other	-	-	-	-	-	-	-	
Provisional	-	-	-	-	-	-	-	
Voting Method Unknown	201	3	97	3	128	2	-2	↓

These are estimated rates for vote method utilization, the number of students utilizing each method, and the percent of students utilizing each method. Not all U.S. states provide information on vote method; voting method for voter files from these states are classified "Voting Method Unknown." For a list of these states, see our FAQ. <https://idhe.tufts.edu/nsive/nsive-faq#CampusReports>

By Age Group

	2016	2018	2020
18-21	45%	31%	67%
22-24	42%	28%	56%
25-29	40%	29%	46%
30-39	48%	36%	51%
40-49	58%	48%	64%
50+	68%	66%	72%

Voting is habit-forming and young voters will usually continue as voters in subsequent elections. Also, young voters are more likely to be contacted by campaigns and are visible, and therefore significant, to elected officials. While in the past, we have seen voting rates increase across age groups, in recent cycles, the most significant increases have been among first-time and the youngest voters. Some colleges serve primarily young students, traditionally viewed as students in the 18-21 or 22-24 categories here. Others have much higher numbers of enrolled older undergraduate or graduate students.

Looking Closer

By Age Group

Here, we provide the numbers of students in each age category and the voting rates for each group. These are based on the student's age on the day of the election, as calculated by the National Student Clearinghouse using data from student enrollment records.

	2016			2018			2020			2016-2020 Change (p.p)
	Enrolled	Voted	Rate	Enrolled	Voted	Rate	Enrolled	Voted	Rate	
18-21	5,481	2,472	45	5,998	1,834	31	5,837	3,883	67	↑ 21
22-24	2,774	1,162	42	2,664	738	28	2,370	1,318	56	↑ 14
25-29	1,923	764	40	1,539	447	29	1,320	605	46	↑ 6
30-39	1,654	799	48	1,071	389	36	1,062	539	51	↑ 2
40-49	710	412	58	397	190	48	428	276	64	↑ 6
50+	413	280	68	164	109	66	194	140	72	↑ 4

Looking Closer

By Sex

	2016			2018			2020			2016-2020	
	Enrolled	Voted	Rate	Enrolled	Voted	Rate	Enrolled	Voted	Rate	Change (p.p)	
Female	6,842	3,376	49	6,038	2,125	35	5,931	3,793	64	↑	15
Male	6,062	2,477	41	5,795	1,582	27	5,280	2,968	56	↑	15

These are estimated voting rates for sex groups and the numbers we used to calculate their voting rates. These classifications are provided by campuses and are obtained following the reporting procedures defined by the National Center for Education Statistics (NCES) of the Institute of Education Sciences (IES). Presently, NCES requires institutions to report students as “Male” or “Female” only.*

If you notice missing data in this page, it could mean any of the following for your institution: (i) does not report this data; (ii) did not provide this data in past years; (iii) does not separately submit data for one or more of the demographic groups, or (iv) the data is reported for 10 or fewer students.

*<https://surveys.nces.ed.gov/ipeds/public/survey-materials/faq?faqid=11>

Looking Closer

By Education Level / Undergraduate Class Year

	2016			2018			2020			2016-2020	
	Enrolled	Voted	Rate (%)	Enrolled	Voted	Rate (%)	Enrolled	Voted	Rate (%)	Change (p.p)	
EDUCATION LEVEL											
Undergraduate	9,300	4,093	44	9,596	2,861	30	8,966	5,558	62	↑	18
Graduate	2,320	1,026	44	2,237	846	38	2,245	1,203	54	↑	9
Class Unknown	1,335	103	8	-	-	-	-	-	-	-	-
CLASS YEAR											
First Year	2,007	45	902	2,095	30	626	1,705	63	1,068	↑	18
Second Year	1,660	42	700	1,790	30	534	1,783	68	1,206	↑	25
Upper Level	5,498	44	2,441	5,393	29	1,578	5,207	60	3,125	↑	16
ENROLLMENT STATUS											
Full-time	9,909	4,277	43	10,091	3,041	30	9,400	5,752	61	↑	18
Part-time	3,046	1,612	53	1,742	666	38	1,811	1,009	56	↑	3

These are estimated voting rates by Education Level (undergraduate/graduate), Class Year, and Enrollment Status (full-time/part-time), and the numbers we used to calculate these rates.

If you notice missing data in this page, it could mean any of the following for your institution: (i) does not report this data; (ii) did not provide this data in past years; (iii) does not separately submit data for one or more of the demographic groups, or (iv) the data is reported for 10 or fewer students.

By Field of Study

FIELDS	2016			2018			2020			2016-2020 RateChange (p.p)
	Enrolled	Voted	Rate	Enrolled	Voted	Rate	Enrolled	Voted	Rate	
Area, Ethnic, Cultural, and Gender Studies	37	14	38	43	14	33	61	32	52	↑ 15
Biological and Biomedical Sciences	871	363	42	955	280	29	947	573	61	↑ 19
Business, Management, and Marketing	1,379	604	44	1,384	434	31	1,348	836	62	↑ 18
Communication and Journalism	283	127	45	222	74	33	197	125	63	↑ 19
Computer and Information Sciences	244	90	37	274	67	24	241	135	56	↑ 19
Education	1,268	627	49	1,132	429	38	1,057	702	66	↑ 17
Engineering and Engineering Technologies	1,646	590	36	1,618	371	23	1,267	668	53	↑ 17

These are estimated voting rates by field of study, and the numbers we used to calculate the field of study rates. For an explanation of CIP codes, please see our FAQ.* There are roughly 8,000 fields of study among U.S. colleges and universities, so we provide rates for condensed categories.

*<https://tufts.app.box.com/v/idhe-nslve-report-faq>

By Field of Study

FIELDS	2016			2018			2020			2016-2020 Change (p.p)
	Enrolled	Voted	Rate	Enrolled	Voted	Rate	Enrolled	Voted	Rate	
English Language and Literature	162	87	54	162	67	41	146	93	64	↑ 10
Family and Consumer/Human Sciences	136	72	53	163	60	37	107	67	63	↑ 10
Foreign Languages, Literatures, and Lingui..	65	32	49	56	22	39	60	34	57	↑ 7
Health Professions	1,116	523	47	1,156	376	33	1,179	679	58	↑ 11
History	101	59	58	86	29	34	95	63	66	↑ 8
Law Enforcement, Firefighting, and Protec..	326	146	45	321	90	28	335	204	61	↑ 16
Legal Professions and Studies	213	98	46	206	101	49	214	136	64	↑ 18
Liberal Arts and Sciences, and Humanities	1,889	957	51	703	196	28	617	385	62	↑ 12
Mathematics and Statistics	109	44	40	89	23	26	101	55	54	↑ 14
Multi/Interdisciplinary Studies	201	95	47	150	50	33	125	81	65	↑ 18
Natural Resources and Conservation	29	20	69	132	47	36	199	123	62	↓ -7
Parks, Recreation, Leisure, and Fitness Stu..	345	160	46	365	102	28	402	259	64	↑ 18
Philosophy and Religious Studies	43	19	44	24	-	-	29	17	59	↑ 14
Physical Sciences	504	228	45	467	143	31	407	209	51	↑ 6

By Field of Study

FIELDS	2016			2018			2020			2016-2020 Change (p.p)
	Enrolled	Voted	Rate	Enrolled	Voted	Rate	Enrolled	Voted	Rate	
Psychology	410	184	45	429	127	30	524	301	57	↑ 13
Public Administration and Social Service Professions	186	94	51	172	76	44	202	134	66	↑ 16
Social Sciences	435	222	51	496	202	41	441	274	62	↑ 11
Visual and Performing Arts	309	130	42	312	98	31	276	158	57	↑ 15
Unknown	31	16	52	33	13	39	26	17	65	↑ 14

About This Report

Thank you for participating in the National Study of Learning, Voting, and Engagement.

Since NSLVE's launch in 2013, nearly 1,200 colleges and universities have signed up to receive their voting rates for the 2012, 2014, 2016, 2018, and 2020 federal elections.

Along with others, your institution's participation in this study has allowed us to build a robust database of over 50 million college student records, about 10 million for each election year, that serve as a foundation for innovative research on college student political learning and engagement in democracy.

NSLVE is a signature initiative of the Institute for Democracy and Higher Education (IDHE) at Tufts University's Jonathan M. Tisch College of Civic Life. The mission of IDHE is to shift college and university priorities and culture to advance political learning, agency, and equity. We achieve our mission through research, resource development, technical assistance, and advocacy.

About the Data

The voter registration and voting rates in this report reflect the percentage of your institution's students who were eligible to vote and who actually voted in the 2016, 2018, and 2020 elections.

These results are based on enrollment records your institution submitted to the National Student Clearinghouse (NSC) and publicly available voting files collected by L2 Political.

Enrollment lists are adjusted by deducting students under age 18 (at the time of the election), people identified as non-degree seeking and those identified by campuses as "nonresident aliens" (NRAs) (the federal government's category for mostly international students). Unfortunately, not all campuses report NRAs to NSC. For those campuses, we use IPEDS to calculate the number of NRA students on each campus and adjust NSC enrollment numbers to estimate the number of students to remove. We also quality check NRA removals by verifying that there is little to no discrepancy between the number of international students reported by the campus to IPEDS and to NSC. We cannot adjust subgroup analyses absent identification of NRAs verified by the process above. We welcome closer partnerships with individual colleges and universities to provide more accurate rates. For more on the data and the matching process, see our FAQ on Campus Reports.

University Of Wyoming

Thank you for the work you do to improve your students' political learning and engagement. We hope that you find your NSLVE report useful. For up-to-date news on NSLVE data, resources, and to sign up for our newsletter visit: <https://idhe.tufts.edu>.

References: IDHE encourages report recipients to share this report as broadly as possible, including posting it on the college or university's website. When doing so, please use the following citation: Institute for Democracy & Higher Education: National Study of Learning, Voting and Engagement. (2021). 2016, 2018, and 2020 report for _____ [name of institution]. Medford, MA.



Barnum Hall
163 Packard Ave.
Medford, MA 02155

tischcollege@tufts.edu
617.627.3453



Institute for Democracy & Higher Education:
National Study of Learning, Voting, and Engagement
Barnum Hall, Medford, MA 02155

Follow Us on Twitter: @TuftsIDHE
NSLVE@tufts.edu
617.627.0620