



October 2021

Student Voting Rates for University Of Wisconsin - Madison

2020 NSLVE Campus Report



Jonathan M. Tisch
College of Civic Life



INSTITUTE FOR DEMOCRACY
& HIGHER EDUCATION

October 2021

Dear Colleagues:

We are pleased to send this tailored report containing your students' voting rates for 2020. This report contains three years of relevant topline data: 2016, 2018, and 2020. As always, we disaggregate the data so you can better identify and address gaps in participation.

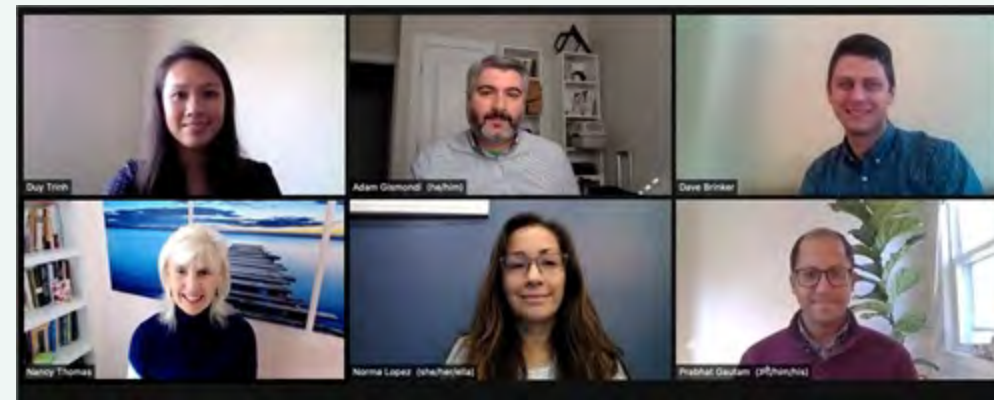
College and university students participated in record-breaking numbers in the 2020 election. In 2016, the Average Institutional Voting Rate was 53%. This year, it jumped to 66%. We encourage you to review Democracy Counts 2020, our most recent national report.

As in past years, we urge you to share this report widely and strategically, particularly with faculty who, in 2020, were often the most consistent communicators with students about ever-changing voting conditions and deadlines. We also urge you to review our recommendations for engaging elections to cultivate a robust and healthy campus climate for political engagement, discourse, equity, and participation: Election Imperatives (2019) and the more recent Election Imperatives: A Time of Physical Distancing and Social Action. Since "pervasive political discussions" and attentiveness to the campus culture around speech and academic freedom are among our top recommendations, we direct you to our discussion guides on talking about your NSLVE report, on free speech and inclusion, and on hot topics, our Making Sense of ... guides.

Finally, we always encourage you to work with us. Help us help you get better data by reaching out. Email IDHE@Tufts.edu for more information. And as always, watch your inbox for our periodic newsletter, IDHE Update, for announcements about upcoming releases and new resources.

Congratulations on engaging your students in the 2020 election. Remember, student political learning is a year-round objective. Elections may be episodic, but student political engagement should not be.

All the Best,
IDHE Team

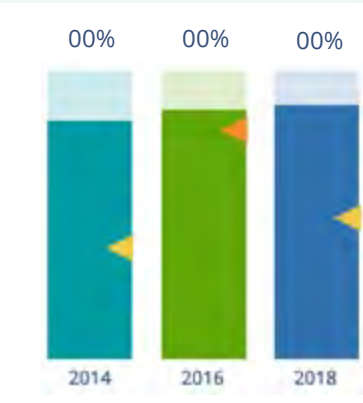


(Top Row from left) Duy Trinh, Program Administrator; Adam Gismondi, Director of Impact; Dave Brinker, Senior Researcher;
(Bottom Row from left) Nancy Thomas, Director; Norma López, Postdoctoral Scholar; Prabhat Gautam, Data Manager.

We also want to acknowledge and thank **Syed Golam Mohaimen, M.S. student in Data Science at Tufts University** for his contributions toward the creation of these reports.

In This Report

This report presents data on student voter participation rates for your campus. The topline counts on page 5 tells you how many students voted, but we encourage you to look carefully at the data on subsequent pages to learn who voted. Data are presented in the form of vessel charts, overlapping donut charts, and tables.



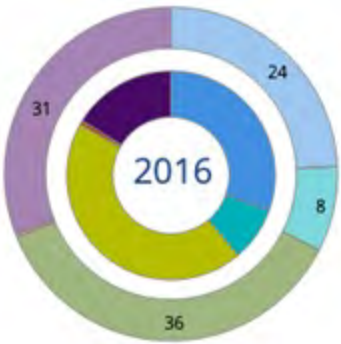
Vessel Chart

This chart shows rates out of 100%, with arrows to the right of each bar representing relevant national averages (medians), which you can find in IDHE's national report Democracy Counts 2020.

	2014			2018			2014-2018
	Enrolled	Voted	Rate (%)	Enrolled	Voted	Rate (%)	Change (p.p.)
Asian	-	-	-	-	-	-	-
American Indian/ Alaska Native	-	-	-	-	-	-	-
Black	-	-	-	-	-	-	-
Hispanic	-	-	-	-	-	-	-

Tables

The tables show, on the left-side columns, the numbers of students and the rates from 2016, 2018, and 2020. On the left-side, percentage point (p.p.) changes between 2016 and 2020. A red down arrow indicates a decrease, a green up arrow indicates an increase, and a yellow arrow pointing to the right indicates no change. "-" in these tables indicates that the data is unavailable/missing, or is available for 10 or less students.



Overlapping Donut Chart

This chart is used to show the breakdown of vote method utilization (page 10), with the outer ring showing your campus method utilization and the inner ring showing the national breakdown. These are described in percentages.

Voting, Registration and Yield Rates

YOUR INSTITUTION

72.8%

2020 Voting Rate

+7.4

Change From 2016

ALL INSTITUTIONS

66%

2020 Voting Rate

REGISTRATION RATE

Year	Rate
2016	80.7%
2018	80.5%
2020	85.2%

The **Registration Rate** is the percent of your voting-eligible students who registered to vote.

VOTING RATE OF REGISTERED STUDENTS

Year	Rate
2016	81.1%
2018	69.6%
2020	85.4%

The **Voting Rate of Registered Students** is the percent of registered students who voted on Election Day. We often refer to this as the “yield” rate.

VOTING RATE

Year	Rate
2016	65.4%
2018	56.0%
2020	72.8%

The **Voting Rate** is the percentage of eligible students who voted on Election Day. The voting rate is also the product of the registration and yield rates.

Looking Closer

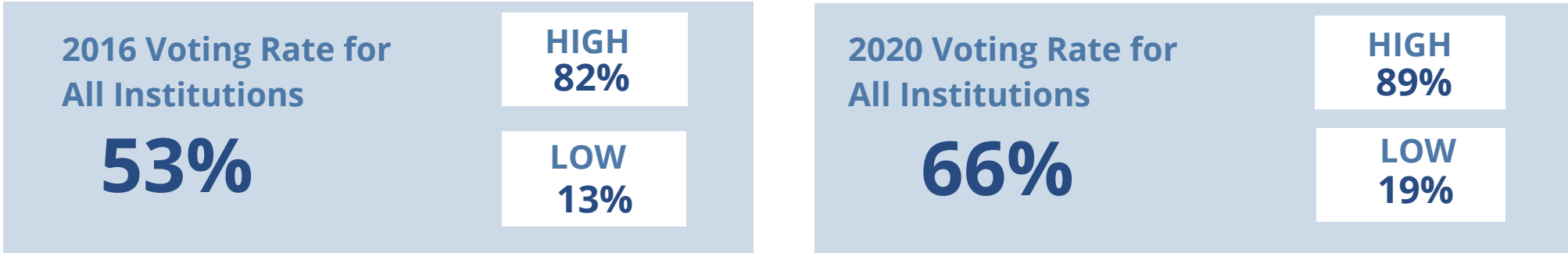
Voting and Registration Rates

	2016	2018	2020	2016-2020 Change (p.p.)
Total Student Enrollment	40,365	41,228	41,746	↑ 1,381
(Age under 18/Unknown)	-	-	-	-
(IPEDS estimated non-resident aliens)	5,239	5,898	5,168	↓ -71
(FERPA records blocked)	739	722	2,828	↑ 2,089
(Non-Degree Seeking Students)	-	25	-	-
Total eligible voters	34,386	34,584	33,749	↓ -637
Number of students who registered	27,757	27,825	28,763	↑ 1,006
Number of students who voted	22,500	19,369	24,572	↑ 2,072
Registration Rate %	81	80	85	↑ 5
Voting Rate of Registered Students %	81	70	85	↑ 4
Voting Rate %	65	56	73	↑ 7

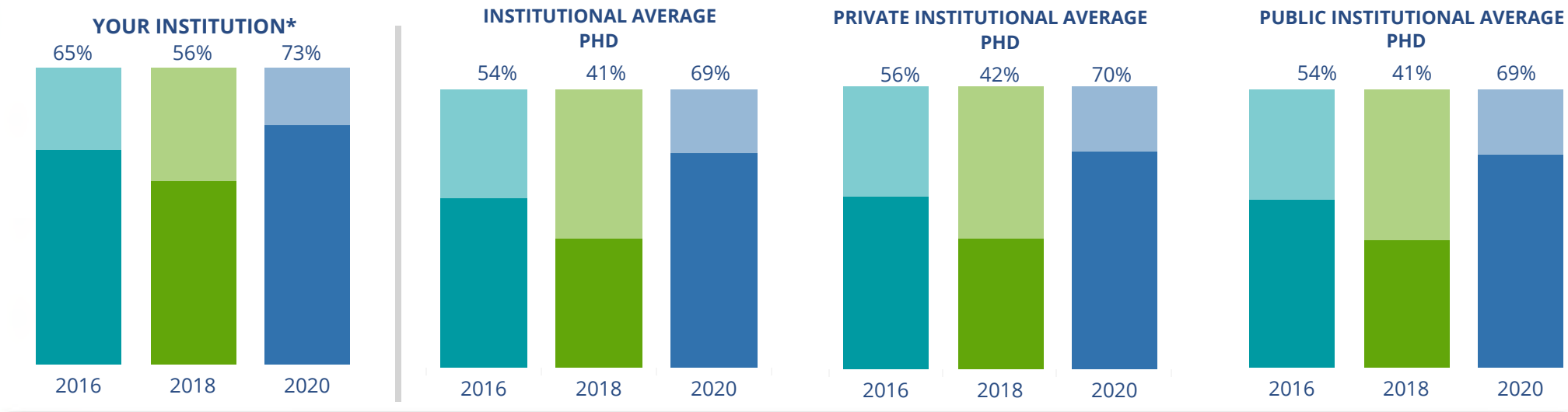
This page provides the numbers we used to calculate your voting, registration, and yield rates. The sub-categories under total student enrollment are the adjustments that we make to account for students who are ineligible to vote due to age or citizenship status. We also exclude, when correctly flagged, students who are not pursuing degrees.

We use IPEDS-derived estimates of NRAs when institutions do not submit non-resident alien status data to NSC, or we cannot verify the accuracy of the reported counts. This estimate is given by "IPEDS estimated non-resident aliens" on this page. If you believe the number of international students reported on this report is incorrect, you can manually adjust your institution's voting rates by using our recalculation tool. <https://id-he.tufts.edu/nsive/nsive-recalculation-tool>.

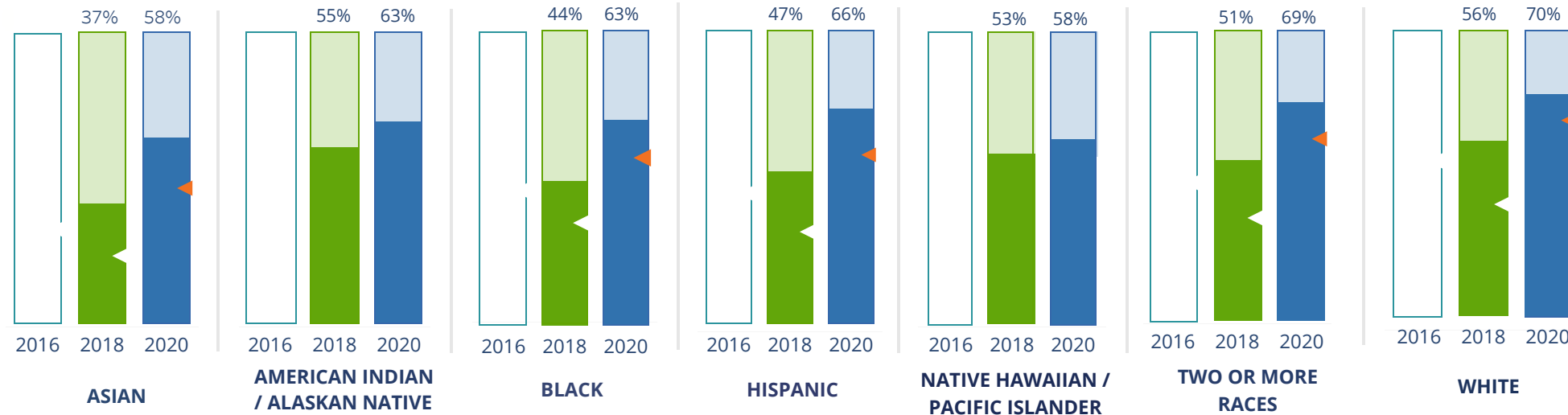
By Institution Types



These are estimated voting rates of your institution compared to the average voting rates of similar institutions in NSLVE. *"Your Institution" chart is presented at a different scale.



By Race / Ethnicity



These are estimated voting rates for race / ethnicity groups. These classifications are provided by campuses and are obtained following race reporting procedures* defined by the National Center for Education Statistics of the Institute of Education Sciences (IES). Please see our FAQ for more detail on why we cannot report national benchmark for some of the demographic groups:

<https://tufts.app.box.com/v/idhe-nsive-report-faq>

If you notice unavailable/missing data in this page, it could mean any of the following for your institution: (i) does not report this data; (ii) did not provide this data in past years; (iii) does not separately submit data for one or more of the demographic groups, or (iv) the data is reported for 10 or fewer students.

* <https://nces.ed.gov/ipeds/report-your-data/race-ethnicity-collecting-data-for-reporting-purposes>

Looking Closer

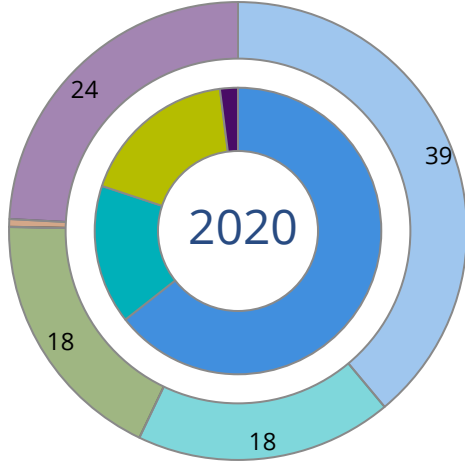
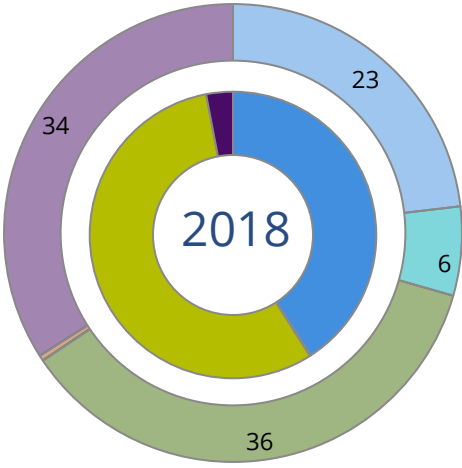
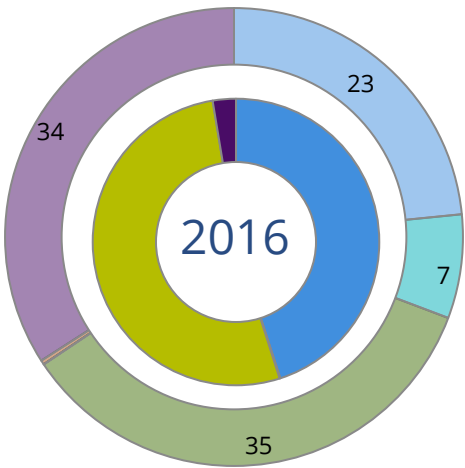
By Race/Ethnicity

This page provides the numbers we used to calculate race / ethnicity group voting rates. We include the counts of students and the change in rates between the two most recent comparable election years. If you notice unavailable/missing data in this page, it could mean any of the following for your institution: (i) does not report this data; (ii) did not provide this data in past years; (iii) does not separately submit data for one or more of the demographic groups, or (iv) the data is reported for 10 or fewer students.

	2016			2018			2020			2016-2020 Change (p.p)
	Enrolled	Voted	Rate	Enrolled	Voted	Rate	Enrolled	Voted	Rate	
Asian	-	-	-	2,228	829	37	2,641	1,525	58	-
American Indian/ Alaska Native	-	-	-	77	42	55	104	65	63	-
Black	-	-	-	828	366	44	893	562	63	-
Hispanic	-	-	-	1,954	920	47	2,381	1,582	66	-
Native Hawaiian/ Pacific Islander	-	-	-	30	16	53	33	19	58	-
2 or More Races	-	-	-	1,416	716	51	1,700	1,167	69	-
White	-	-	-	26,618	14,775	56	26,931	18,870	70	-
Race Unknown	39,602	22,500	57	7,300	1,705	23	4,208	782	19	↓ -38

By Voting Method

Not-In-Person Early Vote In-Person Other Provisional Unknown



	2016		2018		2020		2016-2020	
	Voted	Rate	Voted	Rate	Voted	Rate	Change (p.p.)	
Early Vote	24	0	20	0	3,851	16	16	↑
In-Person on Election Day	11,774	52	10,841	56	4,394	18	-34	↓
Not-In-Person	10,114	45	7,924	41	15,823	64	19	↑
Other	-	-	-	-	-	-	-	
Provisional	-	-	-	-	-	-	-	
Voting Method Unknown	588	3	584	3	503	2	-1	↓

These are estimated rates for vote method utilization, the number of students utilizing each method, and the percent of students utilizing each method. Not all U.S. states provide information on vote method; voting method for voter files from these states are classified "Voting Method Unknown." For a list of these states, see our FAQ. <https://idhe.tufts.edu/nsive/nsive-faq#CampusReports>

By Age Group

	2016	2018	2020
18-21	61%	50%	68%
22-24	51%	43%	53%
25-29	46%	42%	49%
30-39	49%	43%	51%
40-49	66%	58%	68%
50+	87%	86%	90%

Voting is habit-forming and young voters will usually continue as voters in subsequent elections. Also, young voters are more likely to be contacted by campaigns and are visible, and therefore significant, to elected officials. While in the past, we have seen voting rates increase across age groups, in recent cycles, the most significant increases have been among first-time and the youngest voters. Some colleges serve primarily young students, traditionally viewed as students in the 18-21 or 22-24 categories here. Others have much higher numbers of enrolled older undergraduate or graduate students.

Looking Closer

By Age Group

Here, we provide the numbers of students in each age category and the voting rates for each group. These are based on the student's age on the day of the election, as calculated by the National Student Clearinghouse using data from student enrollment records.

	2016			2018			2020			2016-2020	
	Enrolled	Voted	Rate	Enrolled	Voted	Rate	Enrolled	Voted	Rate	Change (p.p)	
18-21	23,189	14,053	61	23,787	11,786	50	24,326	16,650	68	↑	8
22-24	7,346	3,739	51	7,325	3,118	43	6,289	3,340	53	↑	2
25-29	4,870	2,260	46	5,113	2,135	42	4,614	2,282	49	↑	3
30-39	2,812	1,365	49	2,660	1,139	43	2,260	1,144	51	↑	2
40-49	583	382	66	564	329	58	504	344	68	↑	3
50+	802	701	87	1,002	862	86	898	812	90	↑	3

Looking Closer

By Sex

	2016			2018			2020			2016-2020
	Enrolled	Voted	Rate	Enrolled	Voted	Rate	Enrolled	Voted	Rate	Change (p.p)
Female	-	-	-	19,571	10,090	52	20,796	13,762	66	-
Male	-	-	-	17,899	7,949	44	18,095	10,810	60	-

These are estimated voting rates for sex groups and the numbers we used to calculate their voting rates. These classifications are provided by campuses and are obtained following the reporting procedures defined by the National Center for Education Statistics (NCES) of the Institute of Education Sciences (IES). Presently, NCES requires institutions to report students as “Male” or “Female” only.*

If you notice missing data in this page, it could mean any of the following for your institution: (i) does not report this data; (ii) did not provide this data in past years; (iii) does not separately submit data for one or more of the demographic groups, or (iv) the data is reported for 10 or fewer students.

*<https://surveys.nces.ed.gov/ipeds/public/survey-materials/faq?faqid=11>

Looking Closer

By Education Level / Undergraduate Class Year

	2016			2018			2020			2016-2020	
	Enrolled	Voted	Rate (%)	Enrolled	Voted	Rate (%)	Enrolled	Voted	Rate (%)	Change (p.p)	
EDUCATION LEVEL											
Undergraduate	27,577	16,445	60	27,977	13,680	49	27,756	18,453	66	↑	7
Graduate	10,395	4,927	47	10,870	4,585	42	9,680	4,997	52	↑	4
Class Unknown	1,630	1,128	69	1,604	1,104	69	1,455	1,110	76	↑	7
CLASS YEAR											
First Year	4,283	72	3,071	4,254	60	2,540	4,377	78	3,428	↑	7
Second Year	5,827	60	3,518	6,181	52	3,216	6,218	72	4,465	↑	11
Upper Level	17,556	56	9,902	17,494	45	7,898	17,154	62	10,555	↑	5
ENROLLMENT STATUS											
Full-time	36,254	20,280	56	36,920	17,188	47	35,418	22,207	63	↑	7
Part-time	3,348	2,220	66	3,531	2,181	62	3,473	2,365	68	↑	2

These are estimated voting rates by Education Level (undergraduate/graduate), Class Year, and Enrollment Status (full-time/part-time), and the numbers we used to calculate these rates.

If you notice missing data in this page, it could mean any of the following for your institution: (i) does not report this data; (ii) did not provide this data in past years; (iii) does not separately submit data for one or more of the demographic groups, or (iv) the data is reported for 10 or fewer students.

By Field of Study

FIELDS	2016			2018			2020			2016-2020 RateChange (p.p)
	Enrolled	Voted	Rate	Enrolled	Voted	Rate	Enrolled	Voted	Rate	
Architecture	114	70	61	82	41	50	74	44	59	↓ -2
Area, Ethnic, Cultural, and Gender Studies	154	89	58	145	77	53	96	63	66	↑ 8
Biological and Biomedical Sciences	4,005	2,301	57	3,941	1,869	47	3,787	2,348	62	↑ 5
Business, Management, and Marketing	3,563	2,008	56	4,007	1,882	47	4,253	2,870	67	↑ 11
Communication and Journalism	1,194	705	59	1,150	550	48	981	605	62	↑ 3
Computer and Information Sciences	1,006	390	39	1,517	432	28	1,536	684	45	↑ 6
Education	1,096	629	57	1,159	640	55	1,152	726	63	↑ 6

These are estimated voting rates by field of study, and the numbers we used to calculate the field of study rates. For an explanation of CIP codes, please see our FAQ.* There are roughly 8,000 fields of study among U.S. colleges and universities, so we provide rates for condensed categories.

*<https://tufts.app.box.com/v/idhe-nslve-report-faq>

By Field of Study

FIELDS	2016			2018			2020			2016-2020 Change (p.p)
	Enrolled	Voted	Rate	Enrolled	Voted	Rate	Enrolled	Voted	Rate	
Engineering and Engineering Technologies	5,791	2,979	51	5,429	2,240	41	5,089	3,013	59	↑ 8
English Language and Literature	418	232	56	394	204	52	303	177	58	↑ 3
Family and Consumer/Human Sciences	677	417	62	689	350	51	590	411	70	↑ 8
Foreign Languages, Literatures, and Lingui..	643	332	52	617	287	47	445	235	53	↑ 1
Health Professions	3,434	2,018	59	3,894	1,919	49	3,548	2,185	62	↑ 3
History	395	242	61	336	176	52	259	144	56	↓ -6
Legal Professions and Studies	678	416	61	767	406	53	891	584	66	↑ 4
Liberal Arts and Sciences, and Humanities	6,310	4,027	64	5,680	3,058	54	6,589	4,748	72	↑ 8
Mathematics and Statistics	557	156	28	759	174	23	557	211	38	↑ 10
Multi/Interdisciplinary Studies	494	286	58	384	185	48	449	301	67	↑ 9
Natural Resources and Conservation	512	306	60	547	277	51	500	310	62	↑ 2
Parks, Recreation, Leisure, and Fitness Stu..	565	338	60	483	255	53	422	292	69	↑ 9
Philosophy and Religious Studies	125	68	54	125	65	52	110	70	64	↑ 9

By Field of Study

FIELDS	2016			2018			2020			2016-2020	
	Enrolled	Voted	Rate	Enrolled	Voted	Rate	Enrolled	Voted	Rate	Change (p.p)	
Physical Sciences	920	444	48	988	420	43	810	435	54	↑	5
Psychology	926	513	55	962	471	49	971	623	64	↑	9
Public Administration and Social Service Professions	592	382	65	572	359	63	428	277	65	↑	0
Social Sciences	1,991	976	49	2,346	959	41	1,948	1,041	53	↑	4
Visual and Performing Arts	790	463	59	812	429	53	738	488	66	↑	8
Unknown	1,460	1,047	72	1,591	1,098	69	1,457	1,119	77	↑	5

About This Report

Thank you for participating in the National Study of Learning, Voting, and Engagement.

Since NSLVE's launch in 2013, nearly 1,200 colleges and universities have signed up to receive their voting rates for the 2012, 2014, 2016, 2018, and 2020 federal elections.

Along with others, your institution's participation in this study has allowed us to build a robust database of over 50 million college student records, about 10 million for each election year, that serve as a foundation for innovative research on college student political learning and engagement in democracy.

NSLVE is a signature initiative of the Institute for Democracy and Higher Education (IDHE) at Tufts University's Jonathan M. Tisch College of Civic Life. The mission of IDHE is to shift college and university priorities and culture to advance political learning, agency, and equity. We achieve our mission through research, resource development, technical assistance, and advocacy.

About the Data

The voter registration and voting rates in this report reflect the percentage of your institution's students who were eligible to vote and who actually voted in the 2016, 2018, and 2020 elections.

These results are based on enrollment records your institution submitted to the National Student Clearinghouse (NSC) and publicly available voting files collected by L2 Political.

Enrollment lists are adjusted by deducting students under age 18 (at the time of the election), people identified as non-degree seeking and those identified by campuses as "nonresident aliens" (NRAs) (the federal government's category for mostly international students). Unfortunately, not all campuses report NRAs to NSC. For those campuses, we use IPEDS to calculate the number of NRA students on each campus and adjust NSC enrollment numbers to estimate the number of students to remove. We also quality check NRA removals by verifying that there is little to no discrepancy between the number of international students reported by the campus to IPEDS and to NSC. We cannot adjust subgroup analyses absent identification of NRAs verified by the process above. We welcome closer partnerships with individual colleges and universities to provide more accurate rates. For more on the data and the matching process, see our FAQ on Campus Reports.

University Of Wisconsin - Madison

Thank you for the work you do to improve your students' political learning and engagement. We hope that you find your NSLVE report useful. For up-to-date news on NSLVE data, resources, and to sign up for our newsletter visit: <https://idhe.tufts.edu>.

References: IDHE encourages report recipients to share this report as broadly as possible, including posting it on the college or university's website. When doing so, please use the following citation: Institute for Democracy & Higher Education: National Study of Learning, Voting and Engagement. (2021). 2016, 2018, and 2020 report for _____ [name of institution]. Medford, MA.



Barnum Hall
163 Packard Ave.
Medford, MA 02155

tischcollege@tufts.edu
617.627.3453



Institute for Democracy & Higher Education:
National Study of Learning, Voting, and Engagement
Barnum Hall, Medford, MA 02155

Follow Us on Twitter: @TuftsIDHE
NSLVE@tufts.edu
617.627.0620