



October 2021

Student Voting Rates for University Of Utah

2020 NSLVE Campus Report



Jonathan M. Tisch
College of Civic Life



INSTITUTE FOR DEMOCRACY
& HIGHER EDUCATION

October 2021

Dear Colleagues:

We are pleased to send this tailored report containing your students' voting rates for 2020. This report contains three years of relevant topline data: 2016, 2018, and 2020. As always, we disaggregate the data so you can better identify and address gaps in participation.

College and university students participated in record-breaking numbers in the 2020 election. In 2016, the Average Institutional Voting Rate was 53%. This year, it jumped to 66%. We encourage you to review Democracy Counts 2020, our most recent national report.

As in past years, we urge you to share this report widely and strategically, particularly with faculty who, in 2020, were often the most consistent communicators with students about ever-changing voting conditions and deadlines. We also urge you to review our recommendations for engaging elections to cultivate a robust and healthy campus climate for political engagement, discourse, equity, and participation: Election Imperatives (2019) and the more recent Election Imperatives: A Time of Physical Distancing and Social Action. Since "pervasive political discussions" and attentiveness to the campus culture around speech and academic freedom are among our top recommendations, we direct you to our discussion guides on talking about your NSLVE report, on free speech and inclusion, and on hot topics, our Making Sense of ... guides.

Finally, we always encourage you to work with us. Help us help you get better data by reaching out. Email IDHE@Tufts.edu for more information. And as always, watch your inbox for our periodic newsletter, IDHE Update, for announcements about upcoming releases and new resources.

Congratulations on engaging your students in the 2020 election. Remember, student political learning is a year-round objective. Elections may be episodic, but student political engagement should not be.

All the Best,
IDHE Team



(Top Row from left) Duy Trinh, Program Administrator; Adam Gismondi, Director of Impact; Dave Brinker, Senior Researcher;
(Bottom Row from left) Nancy Thomas, Director; Norma López, Postdoctoral Scholar; Prabhat Gautam, Data Manager.

We also want to acknowledge and thank **Syed Golam Mohaimen, M.S. student in Data Science at Tufts University** for his contributions toward the creation of these reports.

In This Report

This report presents data on student voter participation rates for your campus. The topline counts on page 5 tells you how many students voted, but we encourage you to look carefully at the data on subsequent pages to learn who voted. Data are presented in the form of vessel charts, overlapping donut charts, and tables.



Vessel Chart

This chart shows rates out of 100%, with arrows to the right of each bar representing relevant national averages (medians), which you can find in IDHE's national report Democracy Counts 2020.

	2014			2018			2014-2018 Change (p.p.)
	Enrolled	Voted	Rate (%)	Enrolled	Voted	Rate (%)	
Asian	-	-	-	-	-	-	-
American Indian/ Alaska Native	-	-	-	-	-	-	-
Black	-	-	-	-	-	-	-
Hispanic	-	-	-	-	-	-	-

Tables

The tables show, on the left-side columns, the numbers of students and the rates from 2016, 2018, and 2020. On the left-side, percentage point (p.p.) changes between 2016 and 2020. A red down arrow indicates a decrease, a green up arrow indicates an increase, and a yellow arrow pointing to the right indicates no change. "-" in these tables indicates that the data is unavailable/missing, or is available for 10 or less students.



Overlapping Donut Chart

This chart is used to show the breakdown of vote method utilization (page 10), with the outer ring showing your campus method utilization and the inner ring showing the national breakdown. These are described in percentages.

Voting, Registration and Yield Rates

YOUR INSTITUTION

57.9%

2020 Voting Rate

+3.5

Change From 2016

ALL INSTITUTIONS

66%

2020 Voting Rate

REGISTRATION RATE

Year	Rate
2016	71.7%
2018	74.7%
2020	76.1%

The **Registration Rate** is the percent of your voting-eligible students who registered to vote.

VOTING RATE OF REGISTERED STUDENTS

Year	Rate
2016	75.8%
2018	61.8%
2020	76.1%

The **Voting Rate of Registered Students** is the percent of registered students who voted on Election Day. We often refer to this as the “yield” rate.

VOTING RATE

Year	Rate
2016	54.4%
2018	46.2%
2020	57.9%

The **Voting Rate** is the percentage of eligible students who voted on Election Day. The voting rate is also the product of the registration and yield rates.

Looking Closer

Voting and Registration Rates

	2016	2018	2020	2016-2020 Change (p.p.)
Total Student Enrollment	35,306	32,679	33,035	↓ -2,271
(Age under 18/Unknown)	19	–	–	–
(IPEDS estimated non-resident aliens)	2,428	2,143	2,276	↓ -153
(FERPA records blocked)	2,603	2,305	1,620	↓ -983
(Non-Degree Seeking Students)	1,207	–	1,083	↓ -124
Total eligible voters	29,049	28,223	28,051	↓ -998
Number of students who registered	20,826	21,077	21,342	↑ 516
Number of students who voted	15,796	13,033	16,251	↑ 455
Registration Rate %	72	75	76	↑ 4
Voting Rate of Registered Students %	76	62	76	↑ 0
Voting Rate %	54	46	58	↑ 4

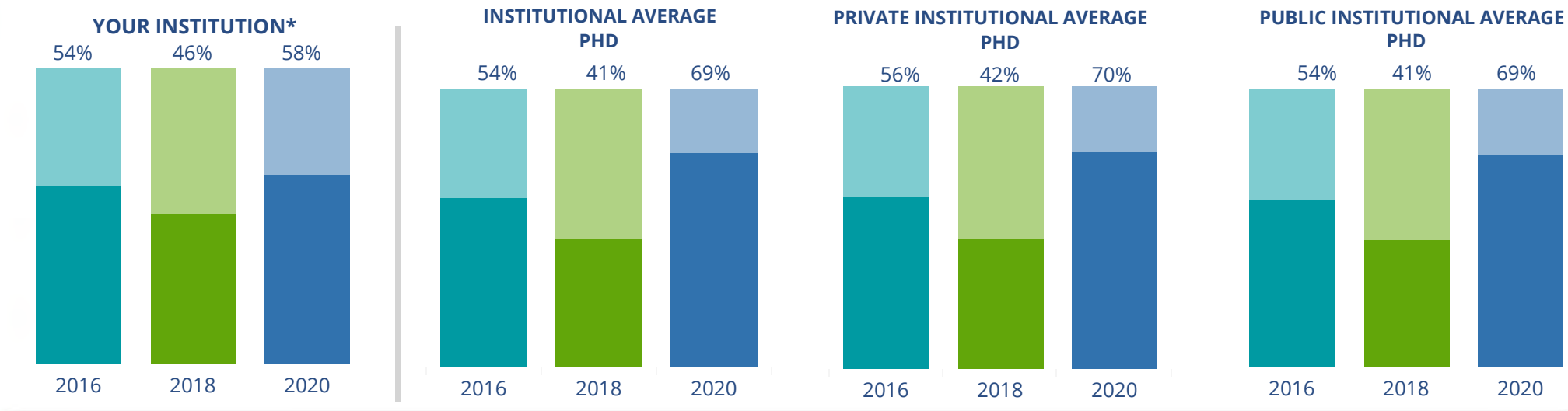
This page provides the numbers we used to calculate your voting, registration, and yield rates. The sub-categories under total student enrollment are the adjustments that we make to account for students who are ineligible to vote due to age or citizenship status. We also exclude, when correctly flagged, students who are not pursuing degrees.

We use IPEDS-derived estimates of NRAs when institutions do not submit non-resident alien status data to NSC, or we cannot verify the accuracy of the reported counts. This estimate is given by "IPEDS estimated non-resident aliens" on this page. If you believe the number of international students reported on this report is incorrect, you can manually adjust your institution's voting rates by using our recalculation tool. <https://id-he.tufts.edu/nsive/nsive-recalculation-tool>.

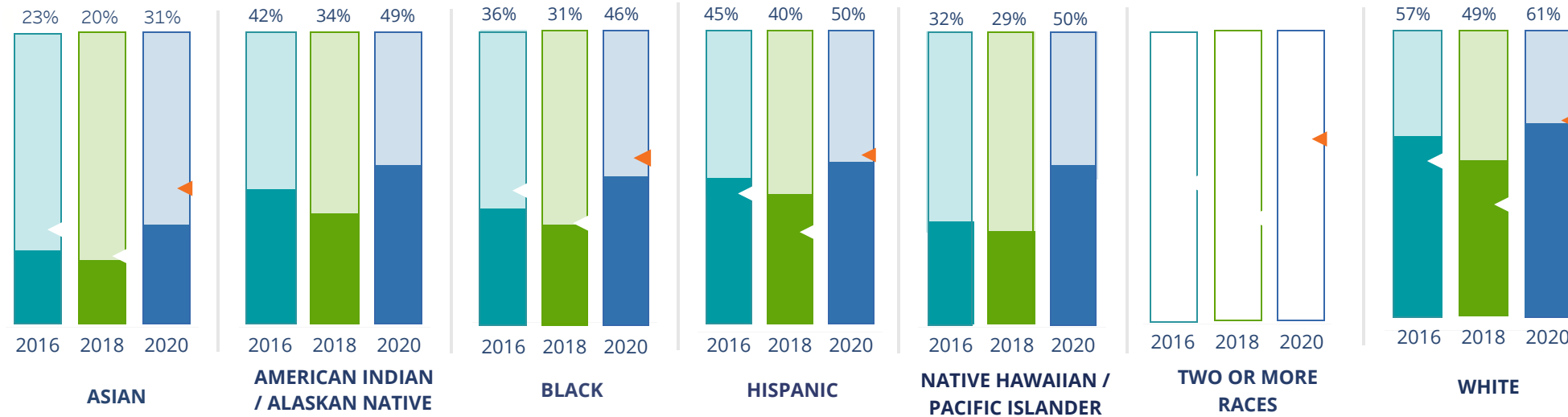
By Institution Types



These are estimated voting rates of your institution compared to the average voting rates of similar institutions in NSLVE. *"Your Institution" chart is presented at a different scale.



By Race / Ethnicity



These are estimated voting rates for race / ethnicity groups. These classifications are provided by campuses and are obtained following race reporting procedures* defined by the National Center for Education Statistics of the Institute of Education Sciences (IES). Please see our FAQ for more detail on why we cannot report national benchmark for some of the demographic groups:

<https://tufts.app.box.com/v/idhe-nsve-report-faq>

If you notice unavailable/missing data in this page, it could mean any of the following for your institution: (i) does not report this data; (ii) did not provide this data in past years; (iii) does not separately submit data for one or more of the demographic groups, or (iv) the data is reported for 10 or fewer students.

* <https://nces.ed.gov/ipeds/report-your-data/race-ethnicity-collecting-data-for-reporting-purposes>

Looking Closer

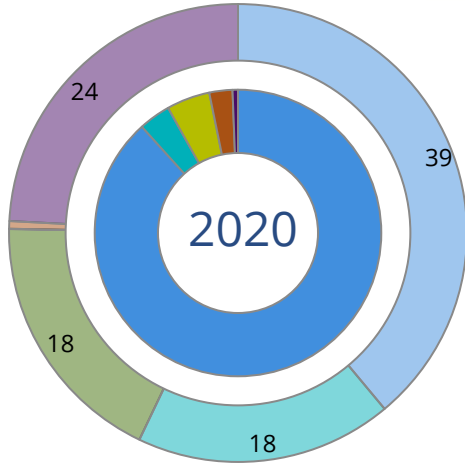
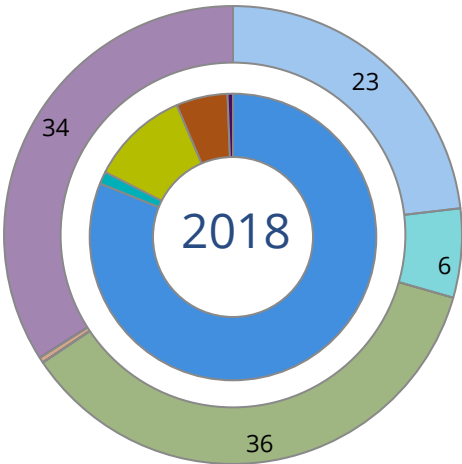
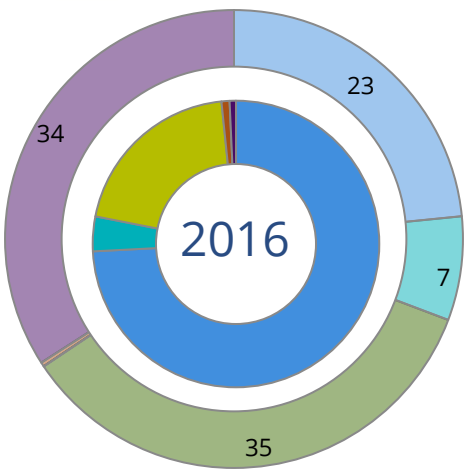
By Race/Ethnicity

This page provides the numbers we used to calculate race / ethnicity group voting rates. We include the counts of students and the change in rates between the two most recent comparable election years. If you notice unavailable/missing data in this page, it could mean any of the following for your institution: (i) does not report this data; (ii) did not provide this data in past years; (iii) does not separately submit data for one or more of the demographic groups, or (iv) the data is reported for 10 or fewer students.

	2016			2018			2020			2016-2020 Change (p.p)
	Enrolled	Voted	Rate	Enrolled	Voted	Rate	Enrolled	Voted	Rate	
Asian	3,643	832	23	3,806	755	20	4,013	1,226	31	↑ 8
American Indian/ Alaska Native	396	165	42	453	156	34	396	195	49	↑ 8
Black	523	189	36	602	186	31	643	296	46	↑ 10
Hispanic	3,103	1,400	45	3,429	1,379	40	3,857	1,924	50	↑ 5
Native Hawaiian/ Pacific Islander	248	80	32	304	89	29	295	147	50	↑ 18
2 or More Races	-	-	-	-	-	-	-	-	-	-
White	20,552	11,659	57	20,018	9,800	49	19,904	12,094	61	↑ 4
Race Unknown	2,912	1,471	51	1,735	668	39	1,133	369	33	↓ -18

By Voting Method

Not-In-Person Early Vote In-Person Other Provisional Unknown



	2016		2018		2020		2016-2020	
	Voted	Rate	Voted	Rate	Voted	Rate	Change (p.p.)	
Early Vote	620	4	185	1	585	4	0	↓
In-Person on Election Day	3,209	20	1,447	11	791	5	-15	↓
Not-In-Person	11,720	74	10,575	81	14,356	88	14	↑
Other	-	-	-	-	-	-	-	
Provisional	142	1	755	6	424	3	2	↑
Voting Method Unknown	105	1	71	1	95	1	0	↓

These are estimated rates for vote method utilization, the number of students utilizing each method, and the percent of students utilizing each method. Not all U.S. states provide information on vote method; voting method for voter files from these states are classified "Voting Method Unknown." For a list of these states, see our FAQ. <https://idhe.tufts.edu/nsive/nsive-faq#CampusReports>

By Age Group

	2016	2018	2020
18-21	42%	39%	54%
22-24	46%	42%	53%
25-29	49%	41%	51%
30-39	59%	49%	52%
40-49	67%	60%	65%
50+	85%	78%	71%

Voting is habit-forming and young voters will usually continue as voters in subsequent elections. Also, young voters are more likely to be contacted by campaigns and are visible, and therefore significant, to elected officials. While in the past, we have seen voting rates increase across age groups, in recent cycles, the most significant increases have been among first-time and the youngest voters. Some colleges serve primarily young students, traditionally viewed as students in the 18-21 or 22-24 categories here. Others have much higher numbers of enrolled older undergraduate or graduate students.

Looking Closer

By Age Group

Here, we provide the numbers of students in each age category and the voting rates for each group. These are based on the student's age on the day of the election, as calculated by the National Student Clearinghouse using data from student enrollment records.

	2016			2018			2020			2016-2020	
	Enrolled	Voted	Rate	Enrolled	Voted	Rate	Enrolled	Voted	Rate	Change (p.p)	
18-21	10,433	4,415	42	12,077	4,668	39	13,473	7,299	54	↑	12
22-24	6,881	3,182	46	6,502	2,763	42	6,269	3,333	53	↑	7
25-29	6,739	3,329	49	6,244	2,587	41	5,801	2,983	51	↑	2
30-39	4,304	2,537	59	3,761	1,842	49	3,418	1,791	52	↓	-7
40-49	1,272	849	67	1,140	688	60	985	637	65	↓	-2
50+	1,748	1,484	85	623	485	78	295	208	71	↓	-14

Looking Closer

By Sex

	2016			2018			2020			2016-2020	
	Enrolled	Voted	Rate	Enrolled	Voted	Rate	Enrolled	Voted	Rate	Change (p.p)	
Female	13,941	7,314	52	13,972	6,359	46	14,530	8,137	56	↑	4
Male	15,956	7,608	48	15,778	6,403	41	15,543	8,032	52	↑	4

These are estimated voting rates for sex groups and the numbers we used to calculate their voting rates. These classifications are provided by campuses and are obtained following the reporting procedures defined by the National Center for Education Statistics (NCES) of the Institute of Education Sciences (IES). Presently, NCES requires institutions to report students as “Male” or “Female” only.*

If you notice missing data in this page, it could mean any of the following for your institution: (i) does not report this data; (ii) did not provide this data in past years; (iii) does not separately submit data for one or more of the demographic groups, or (iv) the data is reported for 10 or fewer students.

*<https://surveys.nces.ed.gov/ipeds/public/survey-materials/faq?faqid=11>

Looking Closer

By Education Level / Undergraduate Class Year

	2016			2018			2020			2016-2020	
	Enrolled	Voted	Rate (%)	Enrolled	Voted	Rate (%)	Enrolled	Voted	Rate (%)	Change (p.p)	
EDUCATION LEVEL											
Undergraduate	20,914	9,854	47	21,431	8,992	42	22,121	12,031	54	↑	7
Graduate	7,670	4,055	53	7,855	3,465	44	8,117	4,218	52	↓	-1
Class Unknown	2,793	1,887	68	1,061	63	6	-	-	-	-	-
CLASS YEAR											
First Year	6,471	53	3,419	4,466	34	1,526	4,224	52	2,193	↓	-1
Second Year	3,694	43	1,591	4,114	38	1,581	4,382	52	2,285	↑	9
Upper Level	13,612	50	6,783	13,893	47	6,471	13,607	56	7,609	↑	6
ENROLLMENT STATUS											
Full-time	23,176	11,024	48	23,558	9,654	41	25,112	13,395	53	↑	6
Part-time	8,199	4,772	58	6,789	3,379	50	5,129	2,856	56	↓	-3

These are estimated voting rates by Education Level (undergraduate/graduate), Class Year, and Enrollment Status (full-time/part-time), and the numbers we used to calculate these rates.

If you notice missing data in this page, it could mean any of the following for your institution: (i) does not report this data; (ii) did not provide this data in past years; (iii) does not separately submit data for one or more of the demographic groups, or (iv) the data is reported for 10 or fewer students.

By Field of Study

FIELDS	2016			2018			2020			2016-2020	
	Enrolled	Voted	Rate	Enrolled	Voted	Rate	Enrolled	Voted	Rate	Change (p.p)	
Architecture	245	111	45	267	98	37	283	145	51	↑	6
Area, Ethnic, Cultural, and Gender Studies	122	65	53	171	97	57	156	93	60	↑	6
Biological and Biomedical Sciences	1,309	637	49	1,397	569	41	1,509	795	53	↑	4
Business, Management, and Marketing	4,133	1,957	47	4,007	1,559	39	4,175	2,262	54	↑	7
Communication and Journalism	860	389	45	856	350	41	833	385	46	↑	1
Computer and Information Sciences	1,698	692	41	2,178	758	35	2,629	1,144	44	↑	3
Education	683	406	59	633	359	57	622	398	64	↑	5

These are estimated voting rates by field of study, and the numbers we used to calculate the field of study rates. For an explanation of CIP codes, please see our FAQ.* There are roughly 8,000 fields of study among U.S. colleges and universities, so we provide rates for condensed categories.

*<https://tufts.app.box.com/v/idhe-nslve-report-faq>

By Field of Study

FIELDS	2016			2018			2020			2016-2020 Change (p.p)
	Enrolled	Voted	Rate	Enrolled	Voted	Rate	Enrolled	Voted	Rate	
Engineering and Engineering Technologies	3,591	1,552	43	3,460	1,322	38	3,609	1,814	50	↑ 7
English Language and Literature	477	287	60	415	249	60	376	234	62	↑ 2
Family and Consumer/Human Sciences	337	169	50	357	156	44	341	184	54	↑ 4
Foreign Languages, Literatures, and Lingui..	312	162	52	334	162	49	244	126	52	↓ 0
Health Professions	3,968	2,080	52	3,952	1,688	43	3,848	2,218	58	↑ 5
History	198	135	68	178	113	63	199	118	59	↓ -9
Legal Professions and Studies	325	219	67	314	179	57	328	205	63	↓ -5
Liberal Arts and Sciences, and Humanities	1,621	760	47	2,837	1,283	45	1,467	824	56	↑ 9
Mathematics and Statistics	425	182	43	465	204	44	461	227	49	↑ 6
Multi/Interdisciplinary Studies	370	207	56	428	192	45	719	415	58	↑ 2
Natural Resources and Conservation	171	93	54	223	137	61	108	44	41	↓ -14
Parks, Recreation, Leisure, and Fitness Stu..	1,096	465	42	1,084	434	40	1,238	715	58	↑ 15
Philosophy and Religious Studies	96	53	55	113	51	45	109	55	50	↓ -5
Physical Sciences	1,092	501	46	1,023	420	41	902	485	54	↑ 8

By Field of Study

FIELDS	2016			2018			2020			2016-2020	
	Enrolled	Voted	Rate	Enrolled	Voted	Rate	Enrolled	Voted	Rate	Change (p.p)	
Psychology	1,027	508	49	1,278	572	45	1,617	840	52	↑	2
Public Administration and Social Service Professions	781	499	64	787	425	54	847	511	60	↓	-4
Social Sciences	1,908	942	49	1,828	886	48	1,855	1,040	56	↑	7
Visual and Performing Arts	1,819	932	51	1,734	759	44	1,743	965	55	↑	4
Unknown	2,713	1,793	66	28	11	39	23	-	-		-

About This Report

Thank you for participating in the National Study of Learning, Voting, and Engagement.

Since NSLVE's launch in 2013, nearly 1,200 colleges and universities have signed up to receive their voting rates for the 2012, 2014, 2016, 2018, and 2020 federal elections.

Along with others, your institution's participation in this study has allowed us to build a robust database of over 50 million college student records, about 10 million for each election year, that serve as a foundation for innovative research on college student political learning and engagement in democracy.

NSLVE is a signature initiative of the Institute for Democracy and Higher Education (IDHE) at Tufts University's Jonathan M. Tisch College of Civic Life. The mission of IDHE is to shift college and university priorities and culture to advance political learning, agency, and equity. We achieve our mission through research, resource development, technical assistance, and advocacy.

About the Data

The voter registration and voting rates in this report reflect the percentage of your institution's students who were eligible to vote and who actually voted in the 2016, 2018, and 2020 elections.

These results are based on enrollment records your institution submitted to the National Student Clearinghouse (NSC) and publicly available voting files collected by L2 Political.

Enrollment lists are adjusted by deducting students under age 18 (at the time of the election), people identified as non-degree seeking and those identified by campuses as "nonresident aliens" (NRAs) (the federal government's category for mostly international students). Unfortunately, not all campuses report NRAs to NSC. For those campuses, we use IPEDS to calculate the number of NRA students on each campus and adjust NSC enrollment numbers to estimate the number of students to remove. We also quality check NRA removals by verifying that there is little to no discrepancy between the number of international students reported by the campus to IPEDS and to NSC. We cannot adjust subgroup analyses absent identification of NRAs verified by the process above. We welcome closer partnerships with individual colleges and universities to provide more accurate rates. For more on the data and the matching process, see our FAQ on Campus Reports.

University Of Utah

Thank you for the work you do to improve your students' political learning and engagement. We hope that you find your NSLVE report useful. For up-to-date news on NSLVE data, resources, and to sign up for our newsletter visit: <https://idhe.tufts.edu>.

References: IDHE encourages report recipients to share this report as broadly as possible, including posting it on the college or university's website. When doing so, please use the following citation: Institute for Democracy & Higher Education: National Study of Learning, Voting and Engagement. (2021). 2016, 2018, and 2020 report for _____ [name of institution]. Medford, MA.



Barnum Hall
163 Packard Ave.
Medford, MA 02155

tischcollege@tufts.edu
617.627.3453



Institute for Democracy & Higher Education:
National Study of Learning, Voting, and Engagement
Barnum Hall, Medford, MA 02155

Follow Us on Twitter: @TuftsIDHE
NSLVE@tufts.edu
617.627.0620