



October 2021

Student Voting Rates for University Of Southern California

2020 NSLVE Campus Report



Jonathan M. Tisch
College of Civic Life



INSTITUTE FOR DEMOCRACY
& HIGHER EDUCATION

October 2021

Dear Colleagues:

We are pleased to send this tailored report containing your students' voting rates for 2020. This report contains three years of relevant topline data: 2016, 2018, and 2020. As always, we disaggregate the data so you can better identify and address gaps in participation.

College and university students participated in record-breaking numbers in the 2020 election. In 2016, the Average Institutional Voting Rate was 53%. This year, it jumped to 66%. We encourage you to review Democracy Counts 2020, our most recent national report.

As in past years, we urge you to share this report widely and strategically, particularly with faculty who, in 2020, were often the most consistent communicators with students about ever-changing voting conditions and deadlines. We also urge you to review our recommendations for engaging elections to cultivate a robust and healthy campus climate for political engagement, discourse, equity, and participation: Election Imperatives (2019) and the more recent Election Imperatives: A Time of Physical Distancing and Social Action. Since "pervasive political discussions" and attentiveness to the campus culture around speech and academic freedom are among our top recommendations, we direct you to our discussion guides on talking about your NSLVE report, on free speech and inclusion, and on hot topics, our Making Sense of ... guides.

Finally, we always encourage you to work with us. Help us help you get better data by reaching out. Email IDHE@Tufts.edu for more information. And as always, watch your inbox for our periodic newsletter, IDHE Update, for announcements about upcoming releases and new resources.

Congratulations on engaging your students in the 2020 election. Remember, student political learning is a year-round objective. Elections may be episodic, but student political engagement should not be.

All the Best,
IDHE Team



(Top Row from left) Duy Trinh, Program Administrator; Adam Gismondi, Director of Impact; Dave Brinker, Senior Researcher;
(Bottom Row from left) Nancy Thomas, Director; Norma López, Postdoctoral Scholar; Prabhat Gautam, Data Manager.

We also want to acknowledge and thank **Syed Golam Mohaimen, M.S. student in Data Science at Tufts University** for his contributions toward the creation of these reports.

In This Report

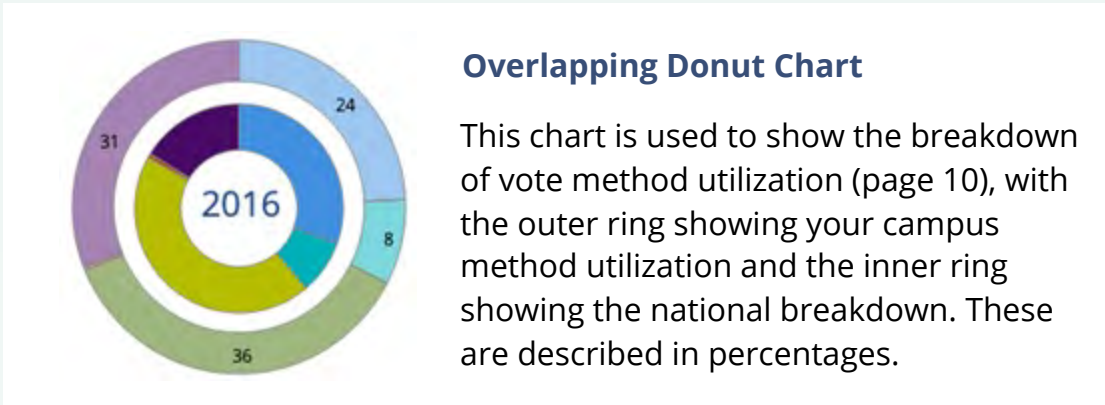
This report presents data on student voter participation rates for your campus. The topline counts on page 5 tells you how many students voted, but we encourage you to look carefully at the data on subsequent pages to learn who voted. Data are presented in the form of vessel charts, overlapping donut charts, and tables.



	2014			2018			2014-2018 Change (p.p.)
	Enrolled	Voted	Rate (%)	Enrolled	Voted	Rate (%)	
Asian	-	-	-	-	-	-	-
American Indian/ Alaska Native	-	-	-	-	-	-	-
Black	-	-	-	-	-	-	-
Hispanic	-	-	-	-	-	-	-

Tables

The tables show, on the left-side columns, the numbers of students and the rates from 2016, 2018, and 2020. On the left-side, percentage point (p.p.) changes between 2016 and 2020. A red down arrow indicates a decrease, a green up arrow indicates an increase, and a yellow arrow pointing to the right indicates no change. "-" in these tables indicates that the data is unavailable/missing, or is available for 10 or less students.



Voting, Registration and Yield Rates

YOUR INSTITUTION

74.3%

2020 Voting Rate

+20.0

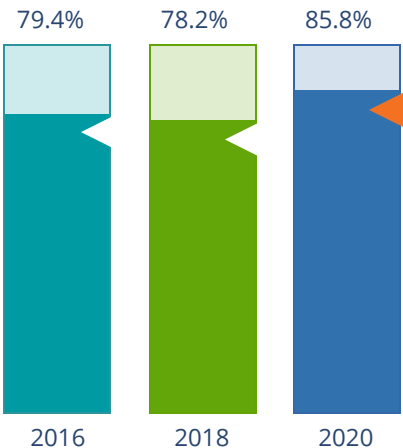
Change From 2016

ALL INSTITUTIONS

66%

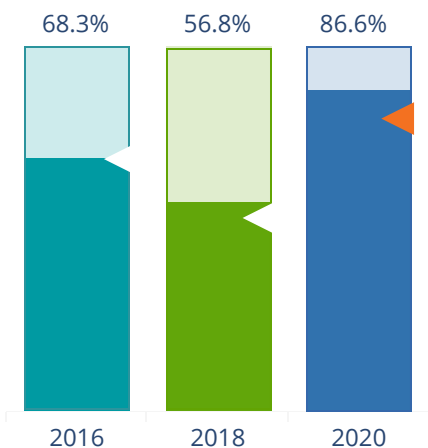
2020 Voting Rate

REGISTRATION RATE



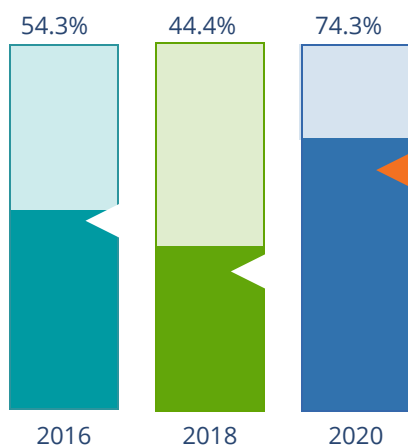
The **Registration Rate** is the percent of your voting-eligible students who registered to vote.

VOTING RATE OF REGISTERED STUDENTS



The **Voting Rate of Registered Students** is the percent of registered students who voted on Election Day. We often refer to this as the “yield” rate.

VOTING RATE



The **Voting Rate** is the percentage of eligible students who voted on Election Day. The voting rate is also the product of the registration and yield rates.

Looking Closer

Voting and Registration Rates

	2016	2018	2020	2016-2020 Change (p.p.)
Total Student Enrollment	42,139	46,751	45,966	↑ 3,827
(Age under 18/Unknown)	–	–	–	–
(IPEDS estimated non-resident aliens)	10,140	11,138	10,296	↑ 156
(FERPA records blocked)	–	–	19	–
(Non-Degree Seeking Students)	919	1,170	1,070	↑ 151
Total eligible voters	31,075	34,440	34,581	↑ 3,506
Number of students who registered	24,686	26,917	29,683	↑ 4,997
Number of students who voted	16,863	15,277	25,706	↑ 8,843
Registration Rate %	79	78	86	↑ 6
Voting Rate of Registered Students %	68	57	87	↑ 18
Voting Rate %	54	44	74	↑ 20

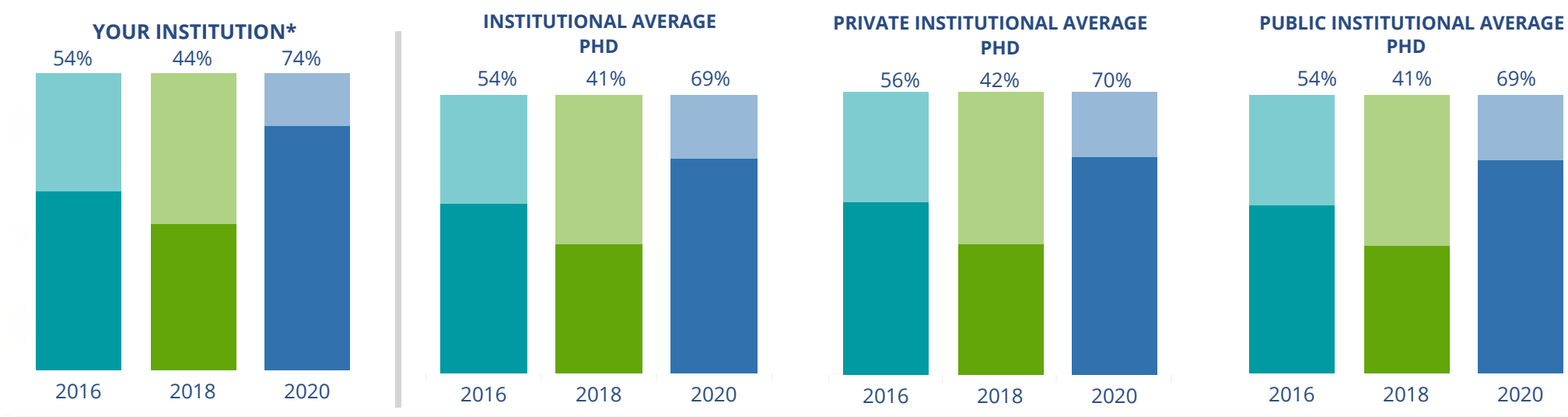
This page provides the numbers we used to calculate your voting, registration, and yield rates. The sub-categories under total student enrollment are the adjustments that we make to account for students who are ineligible to vote due to age or citizenship status. We also exclude, when correctly flagged, students who are not pursuing degrees.

We use IPEDS-derived estimates of NRAs when institutions do not submit non-resident alien status data to NSC, or we cannot verify the accuracy of the reported counts. This estimate is given by "IPEDS estimated non-resident aliens" on this page. If you believe the number of international students reported on this report is incorrect, you can manually adjust your institution's voting rates by using our recalculation tool. <https://id-he.tufts.edu/nsive/nsive-recalculation-tool>.

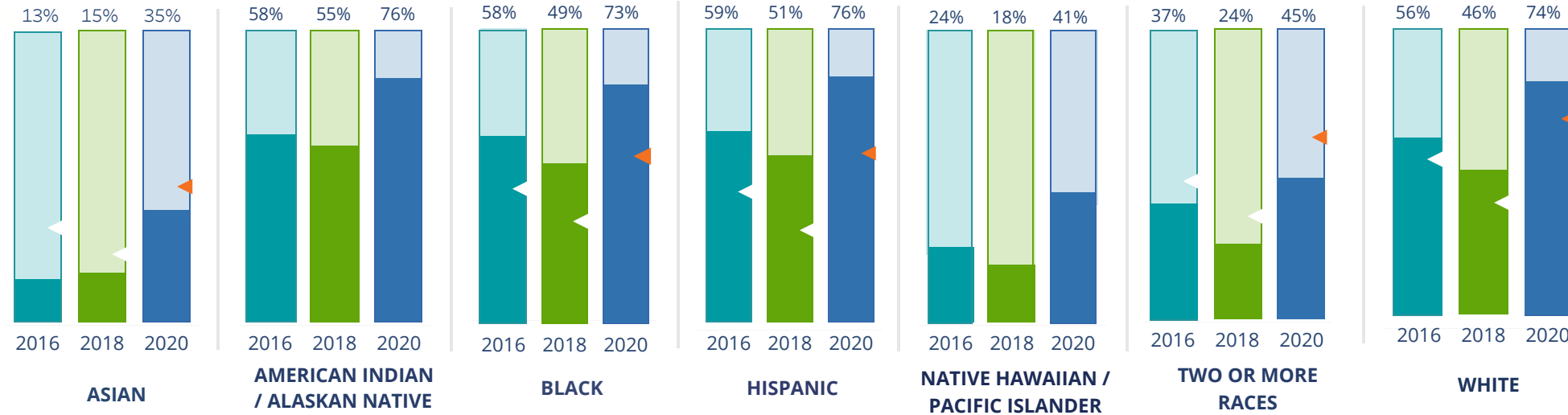
By Institution Types



These are estimated voting rates of your institution compared to the average voting rates of similar institutions in NSLVE. *"Your Institution" chart is presented at a different scale.



By Race / Ethnicity



These are estimated voting rates for race / ethnicity groups. These classifications are provided by campuses and are obtained following race reporting procedures* defined by the National Center for Education Statistics of the Institute of Education Sciences (IES). Please see our FAQ for more detail on why we cannot report national benchmark for some of the demographic groups:

<https://tufts.app.box.com/v/idhe-nslve-report-faq>

If you notice unavailable/missing data in this page, it could mean any of the following for your institution: (i) does not report this data; (ii) did not provide this data in past years; (iii) does not separately submit data for one or more of the demographic groups, or (iv) the data is reported for 10 or fewer students.

* <https://nces.ed.gov/ipeds/report-your-data/race-ethnicity-collecting-data-for-reporting-purposes>

Looking Closer

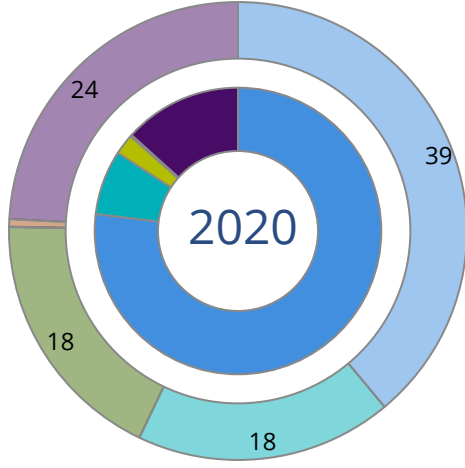
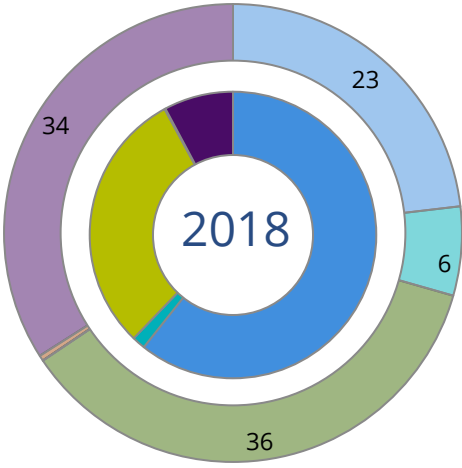
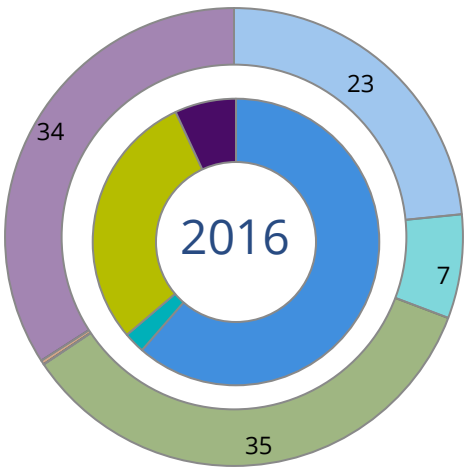
By Race/Ethnicity

This page provides the numbers we used to calculate race / ethnicity group voting rates. We include the counts of students and the change in rates between the two most recent comparable election years. If you notice unavailable/missing data in this page, it could mean any of the following for your institution: (i) does not report this data; (ii) did not provide this data in past years; (iii) does not separately submit data for one or more of the demographic groups, or (iv) the data is reported for 10 or fewer students.

	2016			2018			2020			2016-2020 Change (p.p)
	Enrolled	Voted	Rate	Enrolled	Voted	Rate	Enrolled	Voted	Rate	
Asian	5,303	699	13	1,909	291	15	713	248	35	↑ 22
American Indian/ Alaska Native	89	52	58	82	45	55	74	56	76	↑ 17
Black	2,385	1,374	58	2,621	1,288	49	2,510	1,839	73	↑ 16
Hispanic	3,426	2,010	59	3,605	1,848	51	3,155	2,389	76	↑ 17
Native Hawaiian/ Pacific Islander	5,317	1,262	24	5,407	978	18	4,969	2,030	41	↑ 17
2 or More Races	7,701	2,816	37	13,798	3,286	24	16,807	7,475	44	↑ 8
White	13,431	7,468	56	13,620	6,228	46	13,348	9,852	74	↑ 18
Race Unknown	3,293	1,182	36	4,215	1,313	31	3,029	1,817	60	↑ 24

By Voting Method

Not-In-Person Early Vote In-Person Other Provisional Unknown



	2016		2018		2020		2016-2020	
	Voted	Rate	Voted	Rate	Voted	Rate	Change (p.p.)	
Early Vote	400	2	236	2	1,873	7	5	↑
In-Person on Election Day	4,947	29	4,564	30	597	2	-27	↓
Not-In-Person	10,358	61	9,275	61	19,758	77	16	↑
Other	-	-	-	-	-	-	-	
Provisional	-	-	-	-	43	0	-	
Voting Method Unknown	1,157	7	1,194	8	3,432	13	6	↑

These are estimated rates for vote method utilization, the number of students utilizing each method, and the percent of students utilizing each method. Not all U.S. states provide information on vote method; voting method for voter files from these states are classified "Voting Method Unknown." For a list of these states, see our FAQ. <https://idhe.tufts.edu/nsive/nsive-faq#CampusReports>

By Age Group

	2016	2018	2020
18-21	42%	32%	68%
22-24	32%	24%	42%
25-29	40%	35%	53%
30-39	48%	43%	61%
40-49	64%	58%	73%
50+	70%	68%	81%

Voting is habit-forming and young voters will usually continue as voters in subsequent elections. Also, young voters are more likely to be contacted by campaigns and are visible, and therefore significant, to elected officials. While in the past, we have seen voting rates increase across age groups, in recent cycles, the most significant increases have been among first-time and the youngest voters. Some colleges serve primarily young students, traditionally viewed as students in the 18-21 or 22-24 categories here. Others have much higher numbers of enrolled older undergraduate or graduate students.

Looking Closer

By Age Group

Here, we provide the numbers of students in each age category and the voting rates for each group. These are based on the student’s age on the day of the election, as calculated by the National Student Clearinghouse using data from student enrollment records.

	2016			2018			2020			2016-2020 Change (p.p)
	Enrolled	Voted	Rate	Enrolled	Voted	Rate	Enrolled	Voted	Rate	
18-21	15,226	6,418	42	16,148	5,201	32	16,351	11,062	68	↑ 26
22-24	9,990	3,158	32	11,476	2,806	24	11,175	4,647	42	↑ 10
25-29	8,737	3,528	40	9,570	3,389	35	9,249	4,860	53	↑ 12
30-39	4,877	2,361	48	5,693	2,437	43	5,337	3,251	61	↑ 13
40-49	1,471	944	64	1,636	943	58	1,673	1,220	73	↑ 9
50+	644	454	70	734	501	68	820	666	81	↑ 11

Looking Closer

By Sex

	2016			2018			2020			2016-2020	
	Enrolled	Voted	Rate	Enrolled	Voted	Rate	Enrolled	Voted	Rate	Change (p.p)	
Female	21,809	10,112	46	24,149	9,253	38	23,866	14,781	62	↑	16
Male	19,133	6,750	35	20,959	5,953	28	20,558	10,833	53	↑	17

These are estimated voting rates for sex groups and the numbers we used to calculate their voting rates. These classifications are provided by campuses and are obtained following the reporting procedures defined by the National Center for Education Statistics (NCES) of the Institute of Education Sciences (IES). Presently, NCES requires institutions to report students as “Male” or “Female” only.*

If you notice missing data in this page, it could mean any of the following for your institution: (i) does not report this data; (ii) did not provide this data in past years; (iii) does not separately submit data for one or more of the demographic groups, or (iv) the data is reported for 10 or fewer students.

*<https://surveys.nces.ed.gov/ipeds/public/survey-materials/faq?faqid=11>

Looking Closer

By Education Level / Undergraduate Class Year

	2016			2018			2020			2016-2020	
	Enrolled	Voted	Rate (%)	Enrolled	Voted	Rate (%)	Enrolled	Voted	Rate (%)	Change (p.p)	
EDUCATION LEVEL											
Undergraduate	17,725	7,484	42	18,610	6,026	32	18,675	12,393	66	↑	24
Graduate	21,840	9,186	42	25,297	9,106	36	25,134	13,094	52	↑	10
Class Unknown	1,380	193	14	1,350	145	11	796	219	28	↑	14
CLASS YEAR											
First Year	5,996	40	2,369	4,908	29	1,402	5,002	68	3,405	↑	29
Second Year	5,199	42	2,176	5,557	29	1,637	5,156	65	3,364	↑	23
Upper Level	6,646	45	3,000	8,415	37	3,104	8,966	66	5,901	↑	21
ENROLLMENT STATUS											
Full-time	35,437	14,498	41	39,164	12,965	33	38,217	22,058	58	↑	17
Part-time	5,508	2,365	43	6,093	2,312	38	6,388	3,648	57	↑	14

These are estimated voting rates by Education Level (undergraduate/graduate), Class Year, and Enrollment Status (full-time/part-time), and the numbers we used to calculate these rates.

If you notice missing data in this page, it could mean any of the following for your institution: (i) does not report this data; (ii) did not provide this data in past years; (iii) does not separately submit data for one or more of the demographic groups, or (iv) the data is reported for 10 or fewer students.

By Field of Study

FIELDS	2016			2018			2020			2016-2020 RateChange (p.p)
	Enrolled	Voted	Rate	Enrolled	Voted	Rate	Enrolled	Voted	Rate	
Architecture	1,175	443	38	1,088	315	29	1,039	599	58	↑ 20
Area, Ethnic, Cultural, and Gender Studies	108	57	53	105	47	45	113	74	65	↑ 13
Biological and Biomedical Sciences	1,467	558	38	1,678	488	29	1,772	1,062	60	↑ 22
Business, Management, and Marketing	5,808	2,038	35	6,788	2,018	30	7,412	4,376	59	↑ 24
Communication and Journalism	2,040	996	49	2,246	878	39	2,269	1,397	62	↑ 13
Computer and Information Sciences	2,587	440	17	3,389	391	12	3,689	953	26	↑ 9
Education	1,825	1,138	62	2,268	1,256	55	2,428	1,798	74	↑ 12

These are estimated voting rates by field of study, and the numbers we used to calculate the field of study rates. For an explanation of CIP codes, please see our FAQ.* There are roughly 8,000 fields of study among U.S. colleges and universities, so we provide rates for condensed categories.

*<https://tufts.app.box.com/v/idhe-nslve-report-faq>

By Field of Study

FIELDS	2016			2018			2020			2016-2020 Change (p.p)
	Enrolled	Voted	Rate	Enrolled	Voted	Rate	Enrolled	Voted	Rate	
Engineering and Engineering Technologies	4,410	1,261	29	5,000	997	20	4,507	1,876	42	↑ 13
English Language and Literature	251	145	58	244	125	51	278	214	77	↑ 19
Foreign Languages, Literatures, and Lingui..	315	130	41	308	119	39	334	207	62	↑ 21
Health Professions	4,670	2,200	47	5,112	2,078	41	5,139	3,419	67	↑ 19
History	190	113	59	223	107	48	265	200	75	↑ 16
Law Enforcement, Firefighting, and Protec..	–	–	–	–	–	–	102	76	75	–
Legal Professions and Studies	949	397	42	1,109	406	37	936	623	67	↑ 25
Liberal Arts and Sciences, and Humanities	514	203	39	371	79	21	179	105	59	↑ 19
Mathematics and Statistics	565	141	25	749	144	19	847	294	35	↑ 10
Multi/Interdisciplinary Studies	1,346	647	48	1,681	608	36	1,995	1,305	65	↑ 17
Natural Resources and Conservation	172	98	57	231	98	42	260	177	68	↑ 11
Parks, Recreation, Leisure, and Fitness Stu..	–	–	–	–	–	–	17	11	65	–
Philosophy and Religious Studies	214	106	50	242	94	39	299	198	66	↑ 17

By Field of Study

FIELDS	2016			2018			2020			2016-2020 Change (p.p)
	Enrolled	Voted	Rate	Enrolled	Voted	Rate	Enrolled	Voted	Rate	
Physical Sciences	509	158	31	554	130	23	585	265	45	↑ 14
Psychology	729	368	50	802	307	38	867	607	70	↑ 20
Public Administration and Social Service Professions	3,768	2,342	62	3,693	2,058	56	2,408	1,767	73	↑ 11
Social Sciences	2,413	998	41	2,484	887	36	2,596	1,499	58	↑ 16
Visual and Performing Arts	3,313	1,638	49	3,413	1,435	42	3,340	2,307	69	↑ 20
Unknown	1,550	208	13	1,385	159	11	843	236	28	↑ 15

About This Report

Thank you for participating in the National Study of Learning, Voting, and Engagement.

Since NSLVE's launch in 2013, nearly 1,200 colleges and universities have signed up to receive their voting rates for the 2012, 2014, 2016, 2018, and 2020 federal elections.

Along with others, your institution's participation in this study has allowed us to build a robust database of over 50 million college student records, about 10 million for each election year, that serve as a foundation for innovative research on college student political learning and engagement in democracy.

NSLVE is a signature initiative of the Institute for Democracy and Higher Education (IDHE) at Tufts University's Jonathan M. Tisch College of Civic Life. The mission of IDHE is to shift college and university priorities and culture to advance political learning, agency, and equity. We achieve our mission through research, resource development, technical assistance, and advocacy.

About the Data

The voter registration and voting rates in this report reflect the percentage of your institution's students who were eligible to vote and who actually voted in the 2016, 2018, and 2020 elections.

These results are based on enrollment records your institution submitted to the National Student Clearinghouse (NSC) and publicly available voting files collected by L2 Political.

Enrollment lists are adjusted by deducting students under age 18 (at the time of the election), people identified as non-degree seeking and those identified by campuses as "nonresident aliens" (NRAs) (the federal government's category for mostly international students). Unfortunately, not all campuses report NRAs to NSC. For those campuses, we use IPEDS to calculate the number of NRA students on each campus and adjust NSC enrollment numbers to estimate the number of students to remove. We also quality check NRA removals by verifying that there is little to no discrepancy between the number of international students reported by the campus to IPEDS and to NSC. We cannot adjust subgroup analyses absent identification of NRAs verified by the process above. We welcome closer partnerships with individual colleges and universities to provide more accurate rates. For more on the data and the matching process, see our FAQ on Campus Reports.

University Of Southern California

Thank you for the work you do to improve your students' political learning and engagement. We hope that you find your NSLVE report useful. For up-to-date news on NSLVE data, resources, and to sign up for our newsletter visit: <https://idhe.tufts.edu>.

References: IDHE encourages report recipients to share this report as broadly as possible, including posting it on the college or university's website. When doing so, please use the following citation: Institute for Democracy & Higher Education: National Study of Learning, Voting and Engagement. (2021). 2016, 2018, and 2020 report for _____ [name of institution]. Medford, MA.



Barnum Hall
163 Packard Ave.
Medford, MA 02155

tischcollege@tufts.edu
617.627.3453



Institute for Democracy & Higher Education:
National Study of Learning, Voting, and Engagement
Barnum Hall, Medford, MA 02155

Follow Us on Twitter: @TuftsIDHE
NSLVE@tufts.edu
617.627.0620