



October 2021

# Student Voting Rates for University Of South Florida

## 2020 NSLVE Campus Report

**October 2021**

**Dear Colleagues:**

We are pleased to send this tailored report containing your students' voting rates for 2020. This report contains three years of relevant topline data: 2016, 2018, and 2020. As always, we disaggregate the data so you can better identify and address gaps in participation.

College and university students participated in record-breaking numbers in the 2020 election. In 2016, the Average Institutional Voting Rate was 53%. This year, it jumped to 66%. We encourage you to review Democracy Counts 2020, our most recent national report.

As in past years, we urge you to share this report widely and strategically, particularly with faculty who, in 2020, were often the most consistent communicators with students about ever-changing voting conditions and deadlines. We also urge you to review our recommendations for engaging elections to cultivate a robust and healthy campus climate for political engagement, discourse, equity, and participation: Election Imperatives (2019) and the more recent Election Imperatives: A Time of Physical Distancing and Social Action. Since "pervasive political discussions" and attentiveness to the campus culture around speech and academic freedom are among our top recommendations, we direct you to our discussion guides on talking about your NSLVE report, on free speech and inclusion, and on hot topics, our Making Sense of ... guides.

Finally, we always encourage you to work with us. Help us help you get better data by reaching out. Email [IDHE@Tufts.edu](mailto:IDHE@Tufts.edu) for more information. And as always, watch your inbox for our periodic newsletter, IDHE Update, for announcements about upcoming releases and new resources.

Congratulations on engaging your students in the 2020 election. Remember, student political learning is a year-round objective. Elections may be episodic, but student political engagement should not be.

All the Best,  
IDHE Team



**(Top Row from left) Duy Trinh, Program Administrator; Adam Gismondi, Director of Impact; Dave Brinker, Senior Researcher;**  
**(Bottom Row from left) Nancy Thomas, Director; Norma López, Postdoctoral Scholar; Prabhat Gautam, Data Manager.**

We also want to acknowledge and thank **Syed Golam Mohaimen, M.S. student in Data Science at Tufts University** for his contributions toward the creation of these reports.

# In This Report

This report presents data on student voter participation rates for your campus. The topline counts on page 5 tells you how many students voted, but we encourage you to look carefully at the data on subsequent pages to learn who voted. Data are presented in the form of vessel charts, overlapping donut charts, and tables.



Vessel Chart

This chart shows rates out of 100%, with arrows to the right of each bar representing relevant national averages (medians), which you can find in IDHE's national report Democracy Counts 2020.

	2014			2018			2014-2018 Change (p.p.)
	Enrolled	Voted	Rate (%)	Enrolled	Voted	Rate (%)	
Asian	-	-	-	-	-	-	-
American Indian/ Alaska Native	-	-	-	-	-	-	-
Black	-	-	-	-	-	-	-
Hispanic	-	-	-	-	-	-	-

## Tables

The tables show, on the left-side columns, the numbers of students and the rates from 2016, 2018, and 2020. On the left-side, percentage point (p.p.) changes between 2016 and 2020. A red down arrow indicates a decrease, a green up arrow indicates an increase, and a yellow arrow pointing to the right indicates no change. "-" in these tables indicates that the data is unavailable/missing, or is available for 10 or less students.



Overlapping Donut Chart

This chart is used to show the breakdown of vote method utilization (page 10), with the outer ring showing your campus method utilization and the inner ring showing the national breakdown. These are described in percentages.

# Voting, Registration and Yield Rates

## YOUR INSTITUTION

74.7%

2020 Voting Rate

+11.5

Change From 2016

## ALL INSTITUTIONS

66%

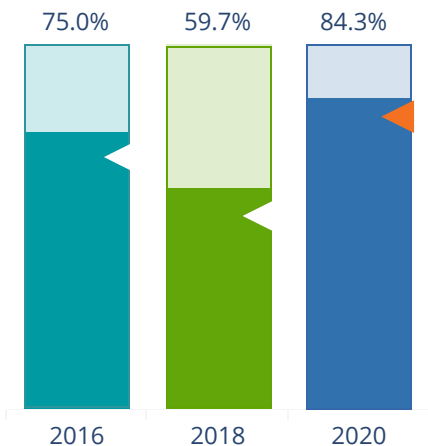
2020 Voting Rate

## REGISTRATION RATE



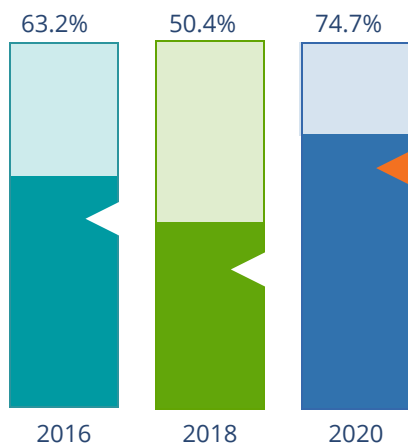
The **Registration Rate** is the percent of your voting-eligible students who registered to vote.

## VOTING RATE OF REGISTERED STUDENTS



The **Voting Rate of Registered Students** is the percent of registered students who voted on Election Day. We often refer to this as the “yield” rate.

## VOTING RATE



The **Voting Rate** is the percentage of eligible students who voted on Election Day. The voting rate is also the product of the registration and yield rates.

# Looking Closer

## Voting and Registration Rates

	2016	2018	2020	2016-2020 Change (p.p.)
Total Student Enrollment	49,822	50,594	49,985	↑ 163
(Age under 18/Unknown)	–	–	16	–
(NSC reported non-resident aliens)	4,563	4,702	4,237	↓ -326
(FERPA records blocked)	261	174	1,983	↑ 1,722
(Non-Degree Seeking Students)	2,512	2,215	–	–
Total eligible voters	42,484	43,502	43,749	↑ 1,265
Number of students who registered	35,797	36,736	38,758	↑ 2,961
Number of students who voted	26,865	21,936	32,690	↑ 5,825
Registration Rate %	84	84	89	↑ 4
Voting Rate of Registered Students %	75	60	84	↑ 9
Voting Rate %	63	50	75	↑ 11

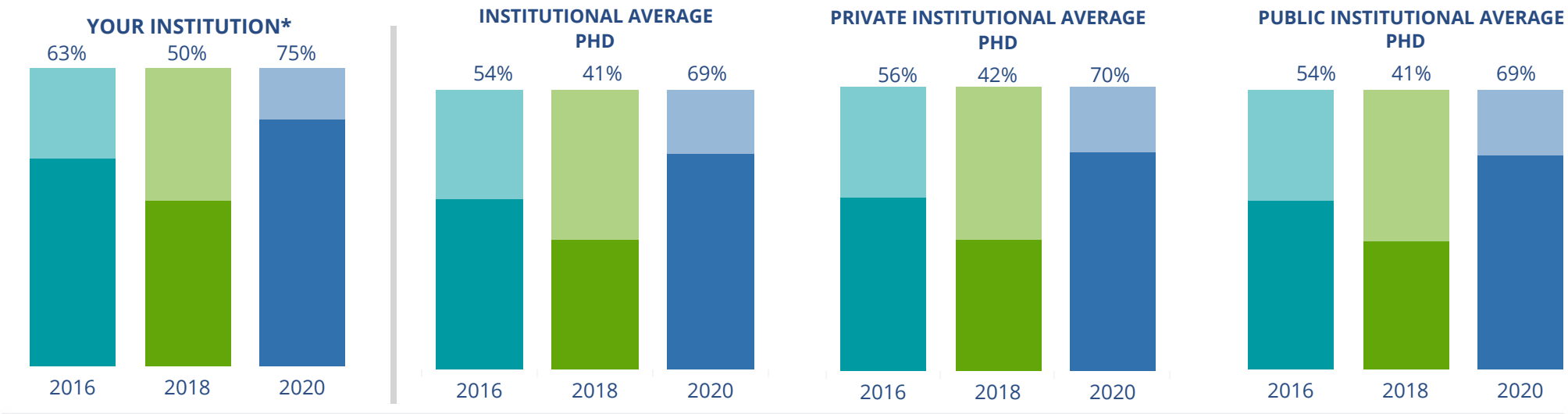
**This page provides the numbers we used to calculate your voting, registration, and yield rates.** The sub-categories under total student enrollment are the adjustments that we make to account for students who are ineligible to vote due to age or citizenship status. We also exclude, when correctly flagged, students who are not pursuing degrees.

We have removed non-resident aliens (international students) based on your institution's enrollment submission to the National Student Clearinghouse. This is indicated by "NSC reported non-resident aliens" on this page.

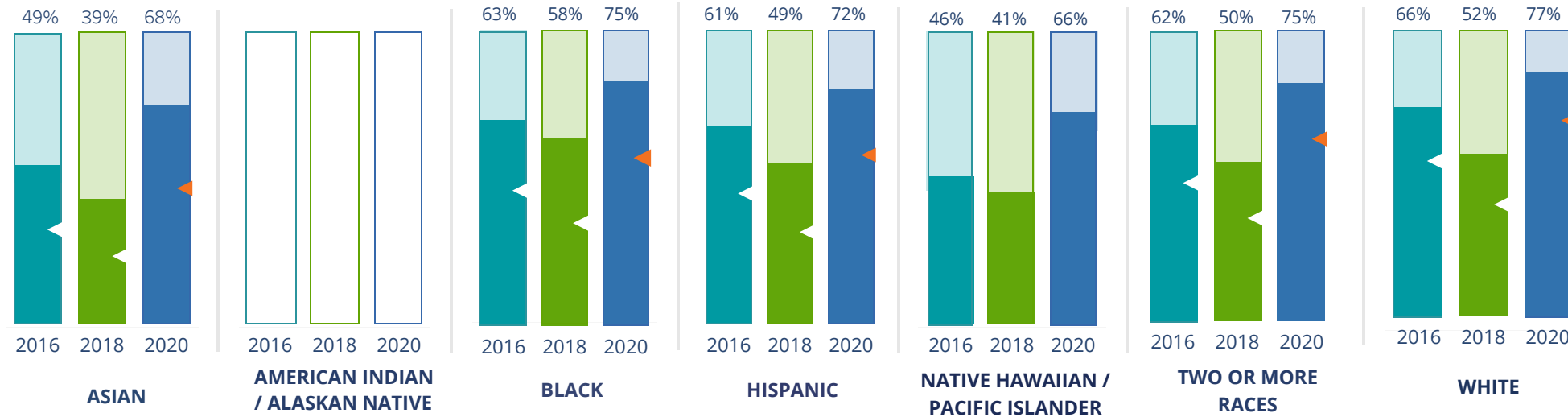
# By Institution Types



These are estimated voting rates of your institution compared to the average voting rates of similar institutions in NSLVE. \*"Your Institution" chart is presented at a different scale.



## By Race / Ethnicity



**These are estimated voting rates for race / ethnicity groups.** These classifications are provided by campuses and are obtained following race reporting procedures\* defined by the National Center for Education Statistics of the Institute of Education Sciences (IES). Please see our FAQ for more detail on why we cannot report national benchmark for some of the demographic groups:

<https://tufts.app.box.com/v/idhe-nsive-report-faq>

If you notice unavailable/missing data in this page, it could mean any of the following for your institution: (i) does not report this data; (ii) did not provide this data in past years; (iii) does not separately submit data for one or more of the demographic groups, or (iv) the data is reported for 10 or fewer students.

\* <https://nces.ed.gov/ipeds/report-your-data/race-ethnicity-collecting-data-for-reporting-purposes>



# Looking Closer

## By Race/Ethnicity

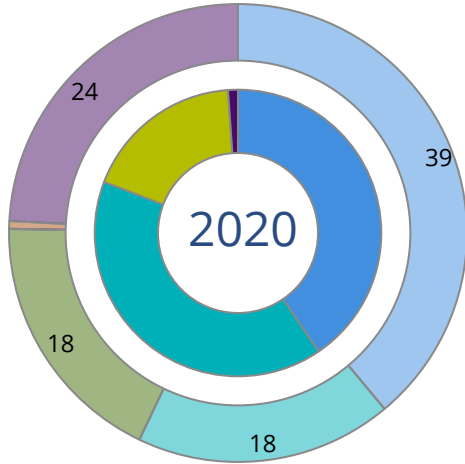
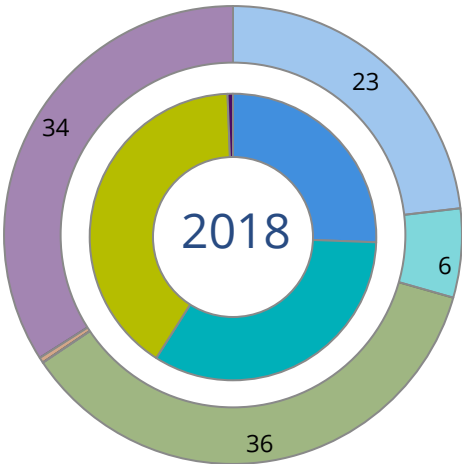
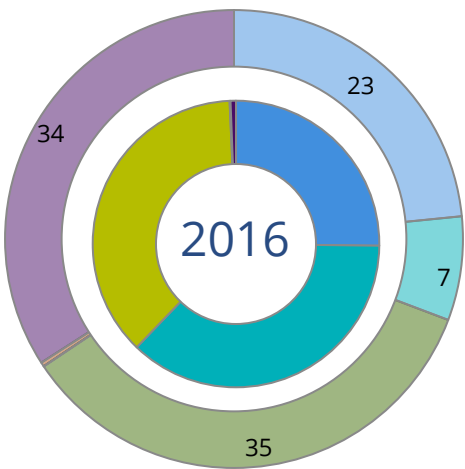
This page provides the numbers we used to calculate race / ethnicity group voting rates. We include the counts of students and the change in rates between the two most recent comparable election years. If you notice unavailable/missing data in this page, it could mean any of the following for your institution: (i) does not report this data; (ii) did not provide this data in past years; (iii) does not separately submit data for one or more of the demographic groups, or (iv) the data is reported for 10 or fewer students.

	2016			2018			2020			2016-2020 Change (p.p)
	Enrolled	Voted	Rate	Enrolled	Voted	Rate	Enrolled	Voted	Rate	
Asian	2,824	1,387	49	2,976	1,162	39	3,167	2,150	68	↑ 19
American Indian/ Alaska Native	-	-	-	-	-	-	-	-	-	-
Black	4,102	2,592	63	4,192	2,425	58	4,044	3,025	75	↑ 12
Hispanic	8,279	5,037	61	8,904	4,390	49	9,662	6,994	72	↑ 12
Native Hawaiian/ Pacific Islander	87	40	46	63	26	41	59	39	66	↑ 20
2 or More Races	1,532	942	61	1,654	828	50	1,744	1,308	75	↑ 14
White	23,709	15,637	66	23,426	12,064	51	22,815	17,666	77	↑ 11
Race Unknown	1,951	1,230	63	2,287	1,041	46	2,258	1,508	67	↑ 4



# By Voting Method

Not-In-Person Early Vote In-Person Other Provisional Unknown



	2016		2018		2020		2016-2020	
	Voted	Rate	Voted	Rate	Voted	Rate	Change (p.p.)	
Early Vote	9,953	37	7,316	33	13,181	40	3	↑
In-Person on Election Day	9,980	37	8,872	40	5,929	18	-19	↓
Not-In-Person	6,772	25	5,621	26	13,240	41	15	↑
Other	-	-	-	-	-	-	-	
Provisional	21	0	-	-	-	-	-	
Voting Method Unknown	139	1	127	1	331	1	1	↑

These are estimated rates for vote method utilization, the number of students utilizing each method, and the percent of students utilizing each method. Not all U.S. states provide information on vote method; voting method for voter files from these states are classified "Voting Method Unknown." For a list of these states, see our FAQ. <https://idhe.tufts.edu/nsive/nsive-faq#CampusReports>

## By Age Group

	2016	2018	2020
18-21	60%	46%	74%
22-24	62%	49%	73%
25-29	64%	52%	73%
30-39	71%	59%	78%
40-49	77%	68%	80%
50+	84%	79%	85%

**Voting is habit-forming and young voters will usually continue as voters in subsequent elections.** Also, young voters are more likely to be contacted by campaigns and are visible, and therefore significant, to elected officials. While in the past, we have seen voting rates increase across age groups, in recent cycles, the most significant increases have been among first-time and the youngest voters. Some colleges serve primarily young students, traditionally viewed as students in the 18-21 or 22-24 categories here. Others have much higher numbers of enrolled older undergraduate or graduate students.

# Looking Closer

## By Age Group

Here, we provide the numbers of students in each age category and the voting rates for each group. These are based on the student’s age on the day of the election, as calculated by the National Student Clearinghouse using data from student enrollment records.

	2016			2018			2020			2016-2020 Change (p.p)
	Enrolled	Voted	Rate	Enrolled	Voted	Rate	Enrolled	Voted	Rate	
18-21	19,165	11,453	60	20,314	9,413	46	21,852	16,252	74	↑ 15
22-24	9,756	6,045	62	9,881	4,842	49	9,464	6,956	73	↑ 12
25-29	6,702	4,288	64	6,606	3,418	52	5,912	4,312	73	↑ 9
30-39	4,387	3,122	71	4,266	2,524	59	4,140	3,227	78	↑ 7
40-49	1,623	1,245	77	1,681	1,145	68	1,526	1,218	80	↑ 3
50+	851	712	84	754	594	79	855	725	85	↑ 1

# Looking Closer

## By Sex

	2016			2018			2020			2016-2020	
	Enrolled	Voted	Rate	Enrolled	Voted	Rate	Enrolled	Voted	Rate	Change (p.p)	
Female	24,378	16,066	66	25,286	13,232	52	25,975	20,000	77	↑	11
Male	18,100	10,794	60	18,210	8,699	48	17,766	12,684	71	↑	12

**These are estimated voting rates for sex groups and the numbers we used to calculate their voting rates.** These classifications are provided by campuses and are obtained following the reporting procedures defined by the National Center for Education Statistics (NCES) of the Institute of Education Sciences (IES). Presently, NCES requires institutions to report students as “Male” or “Female” only.\*

If you notice missing data in this page, it could mean any of the following for your institution: (i) does not report this data; (ii) did not provide this data in past years; (iii) does not separately submit data for one or more of the demographic groups, or (iv) the data is reported for 10 or fewer students.

\*<https://surveys.nces.ed.gov/ipeds/public/survey-materials/faq?faqid=11>

# Looking Closer

## By Education Level / Undergraduate Class Year

	2016			2018			2020			2016-2020	
	Enrolled	Voted	Rate (%)	Enrolled	Voted	Rate (%)	Enrolled	Voted	Rate (%)	Change (p.p)	
EDUCATION LEVEL											
Undergraduate	33,791	20,725	61	34,497	16,530	48	33,997	25,057	74	↑	12
Graduate	8,685	6,135	71	9,005	5,406	60	8,401	6,655	79	↑	9
Class Unknown	-	-	-	-	-	-	1,351	220	16		-
CLASS YEAR											
First Year	3,811	57	2,184	3,698	41	1,521	3,686	70	2,597	↑	13
Second Year	4,966	59	2,918	5,237	43	2,264	5,317	74	3,918	↑	15
Upper Level	24,992	62	15,611	25,441	50	12,687	24,951	74	18,508	↑	12
ENROLLMENT STATUS											
Full-time	30,383	18,742	62	31,290	15,311	49	33,388	25,002	75	↑	13
Part-time	12,101	8,123	67	12,212	6,625	54	10,361	7,688	74	↑	7

These are estimated voting rates by Education Level (undergraduate/graduate), Class Year, and Enrollment Status (full-time/part-time), and the numbers we used to calculate these rates.

If you notice missing data in this page, it could mean any of the following for your institution: (i) does not report this data; (ii) did not provide this data in past years; (iii) does not separately submit data for one or more of the demographic groups, or (iv) the data is reported for 10 or fewer students.

## By Field of Study

FIELDS	2016			2018			2020			2016-2020
	Enrolled	Voted	Rate	Enrolled	Voted	Rate	Enrolled	Voted	Rate	Change (p.p)
Architecture	254	152	60	259	112	43	335	242	72	↑ 12
Area, Ethnic, Cultural, and Gender Studies	59	43	73	44	33	75	38	33	87	↑ 14
Biological and Biomedical Sciences	5,928	3,517	59	5,974	2,767	46	6,117	4,449	73	↑ 13
Business, Management, and Marketing	6,550	3,956	60	6,889	3,235	47	6,412	4,698	73	↑ 13
Communication and Journalism	1,618	1,090	67	1,568	846	54	1,558	1,196	77	↑ 9
Computer and Information Sciences	894	537	60	1,756	877	50	2,129	1,517	71	↑ 11
Education	2,847	2,022	71	2,583	1,512	59	2,268	1,831	81	↑ 10

**These are estimated voting rates by field of study, and the numbers we used to calculate the field of study rates.** For an explanation of CIP codes, please see our FAQ.\* There are roughly 8,000 fields of study among U.S. colleges and universities, so we provide rates for condensed categories.

\*<https://tufts.app.box.com/v/idhe-nslve-report-faq>

# By Field of Study

FIELDS	2016			2018			2020			2016-2020 Change (p.p)
	Enrolled	Voted	Rate	Enrolled	Voted	Rate	Enrolled	Voted	Rate	
Engineering and Engineering Technologies	3,996	2,356	59	3,176	1,439	45	2,957	2,090	71	↑ 12
English Language and Literature	728	522	72	686	430	63	618	498	81	↑ 9
Foreign Languages, Literatures, and Lingui..	150	107	71	160	98	61	196	144	73	↑ 2
Health Professions	8,459	5,302	63	8,999	4,265	47	8,099	6,107	75	↑ 13
History	402	306	76	404	266	66	369	305	83	↑ 7
Law Enforcement, Firefighting, and Protec..	311	213	68	265	150	57	234	172	74	↑ 5
Liberal Arts and Sciences, and Humanities	713	467	65	910	489	54	2,243	1,675	75	↑ 9
Mathematics and Statistics	311	182	59	337	165	49	284	198	70	↑ 11
Multi/Interdisciplinary Studies	355	221	62	255	136	53	467	355	76	↑ 14
Natural Resources and Conservation	446	313	70	471	289	61	454	366	81	↑ 10
Parks, Recreation, Leisure, and Fitness Stu..	32	12	38	49	15	31	55	32	58	↑ 21
Philosophy and Religious Studies	155	108	70	135	71	53	142	100	70	↑ 1
Physical Sciences	977	640	66	937	502	54	788	594	75	↑ 10



# By Field of Study

FIELDS	2016			2018			2020			2016-2020	
	Enrolled	Voted	Rate	Enrolled	Voted	Rate	Enrolled	Voted	Rate	Change (p.p)	
Psychology	2,226	1,427	64	2,440	1,233	51	2,681	1,994	74	↑	10
Public Administration and Social Service Professions	748	512	68	677	416	61	814	629	77	↑	9
Social Sciences	3,260	2,141	66	3,496	1,954	56	3,298	2,513	76	↑	11
Visual and Performing Arts	836	526	63	816	470	58	900	700	78	↑	15
Unknown	14	-	-	-	-	-	14	-	-		-

# About This Report

## Thank you for participating in the National Study of Learning, Voting, and Engagement.

Since NSLVE's launch in 2013, nearly 1,200 colleges and universities have signed up to receive their voting rates for the 2012, 2014, 2016, 2018, and 2020 federal elections.

Along with others, your institution's participation in this study has allowed us to build a robust database of over 50 million college student records, about 10 million for each election year, that serve as a foundation for innovative research on college student political learning and engagement in democracy.

NSLVE is a signature initiative of the Institute for Democracy and Higher Education (IDHE) at Tufts University's Jonathan M. Tisch College of Civic Life. The mission of IDHE is to shift college and university priorities and culture to advance political learning, agency, and equity. We achieve our mission through research, resource development, technical assistance, and advocacy.

### About the Data

The voter registration and voting rates in this report reflect the percentage of your institution's students who were eligible to vote and who actually voted in the 2016, 2018, and 2020 elections.

These results are based on enrollment records your institution submitted to the National Student Clearinghouse (NSC) and publicly available voting files collected by L2 Political.

Enrollment lists are adjusted by deducting students under age 18 (at the time of the election), people identified as non-degree seeking and those identified by campuses as "nonresident aliens" (NRAs) (the federal government's category for mostly international students). Unfortunately, not all campuses report NRAs to NSC. For those campuses, we use IPEDS to calculate the number of NRA students on each campus and adjust NSC enrollment numbers to estimate the number of students to remove. We also quality check NRA removals by verifying that there is little to no discrepancy between the number of international students reported by the campus to IPEDS and to NSC. We cannot adjust subgroup analyses absent identification of NRAs verified by the process above. We welcome closer partnerships with individual colleges and universities to provide more accurate rates. For more on the data and the matching process, see our FAQ on Campus Reports.

University Of South Florida

Thank you for the work you do to improve your students' political learning and engagement. We hope that you find your NSLVE report useful. For up-to-date news on NSLVE data, resources, and to sign up for our newsletter visit: <https://idhe.tufts.edu>.

References: IDHE encourages report recipients to share this report as broadly as possible, including posting it on the college or university's website. When doing so, please use the following citation: Institute for Democracy & Higher Education: National Study of Learning, Voting and Engagement. (2021). 2016, 2018, and 2020 report for \_\_\_\_\_ [name of institution]. Medford, MA.



Barnum Hall  
163 Packard Ave.  
Medford, MA 02155

tischcollege@tufts.edu  
617.627.3453



Institute for Democracy & Higher Education:  
National Study of Learning, Voting, and Engagement  
Barnum Hall, Medford, MA 02155

Follow Us on Twitter: @TuftsIDHE  
NSLVE@tufts.edu  
617.627.0620