



October 2021

Student Voting Rates for University of South Carolina-Columbia

2020 NSLVE Campus Report



Jonathan M. Tisch
College of Civic Life



INSTITUTE FOR DEMOCRACY
& HIGHER EDUCATION

October 2021

Dear Colleagues:

We are pleased to send this tailored report containing your students' voting rates for 2020. This report contains three years of relevant topline data: 2016, 2018, and 2020. As always, we disaggregate the data so you can better identify and address gaps in participation.

College and university students participated in record-breaking numbers in the 2020 election. In 2016, the Average Institutional Voting Rate was 53%. This year, it jumped to 66%. We encourage you to review Democracy Counts 2020, our most recent national report.

As in past years, we urge you to share this report widely and strategically, particularly with faculty who, in 2020, were often the most consistent communicators with students about ever-changing voting conditions and deadlines. We also urge you to review our recommendations for engaging elections to cultivate a robust and healthy campus climate for political engagement, discourse, equity, and participation: Election Imperatives (2019) and the more recent Election Imperatives: A Time of Physical Distancing and Social Action. Since "pervasive political discussions" and attentiveness to the campus culture around speech and academic freedom are among our top recommendations, we direct you to our discussion guides on talking about your NSLVE report, on free speech and inclusion, and on hot topics, our Making Sense of ... guides.

Finally, we always encourage you to work with us. Help us help you get better data by reaching out. Email IDHE@Tufts.edu for more information. And as always, watch your inbox for our periodic newsletter, IDHE Update, for announcements about upcoming releases and new resources.

Congratulations on engaging your students in the 2020 election. Remember, student political learning is a year-round objective. Elections may be episodic, but student political engagement should not be.

All the Best,
IDHE Team



(Top Row from left) Duy Trinh, Program Administrator; Adam Gismondi, Director of Impact; Dave Brinker, Senior Researcher;
(Bottom Row from left) Nancy Thomas, Director; Norma López, Postdoctoral Scholar; Prabhat Gautam, Data Manager.

We also want to acknowledge and thank **Syed Golam Mohaimen, M.S. student in Data Science at Tufts University** for his contributions toward the creation of these reports.

In This Report

This report presents data on student voter participation rates for your campus. The topline counts on page 5 tells you how many students voted, but we encourage you to look carefully at the data on subsequent pages to learn who voted. Data are presented in the form of vessel charts, overlapping donut charts, and tables.



Vessel Chart

This chart shows rates out of 100%, with arrows to the right of each bar representing relevant national averages (medians), which you can find in IDHE's national report Democracy Counts 2020.

	2014			2018			2014-2018
	Enrolled	Voted	Rate (%)	Enrolled	Voted	Rate (%)	Change (p.p.)
Asian	-	-	-	-	-	-	-
American Indian/ Alaska Native	-	-	-	-	-	-	-
Black	-	-	-	-	-	-	-
Hispanic	-	-	-	-	-	-	-

Tables

The tables show, on the left-side columns, the numbers of students and the rates from 2016, 2018, and 2020. On the left-side, percentage point (p.p.) changes between 2016 and 2020. A red down arrow indicates a decrease, a green up arrow indicates an increase, and a yellow arrow pointing to the right indicates no change. "-" in these tables indicates that the data is unavailable/missing, or is available for 10 or less students.



Overlapping Donut Chart

This chart is used to show the breakdown of vote method utilization (page 10), with the outer ring showing your campus method utilization and the inner ring showing the national breakdown. These are described in percentages.

Voting, Registration and Yield Rates

YOUR INSTITUTION

69.1%

2020 Voting Rate

+15.4

Change From 2016

ALL INSTITUTIONS

66%

2020 Voting Rate

REGISTRATION RATE

Year	Registration Rate
2016	82.2%
2018	76.9%
2020	87.1%

The **Registration Rate** is the percent of your voting-eligible students who registered to vote.

VOTING RATE OF REGISTERED STUDENTS

Year	Voting Rate of Registered Students
2016	65.3%
2018	43.8%
2020	79.3%

The **Voting Rate of Registered Students** is the percent of registered students who voted on Election Day. We often refer to this as the “yield” rate.

VOTING RATE

Year	Voting Rate
2016	53.7%
2018	33.7%
2020	69.1%

The **Voting Rate** is the percentage of eligible students who voted on Election Day. The voting rate is also the product of the registration and yield rates.

Looking Closer

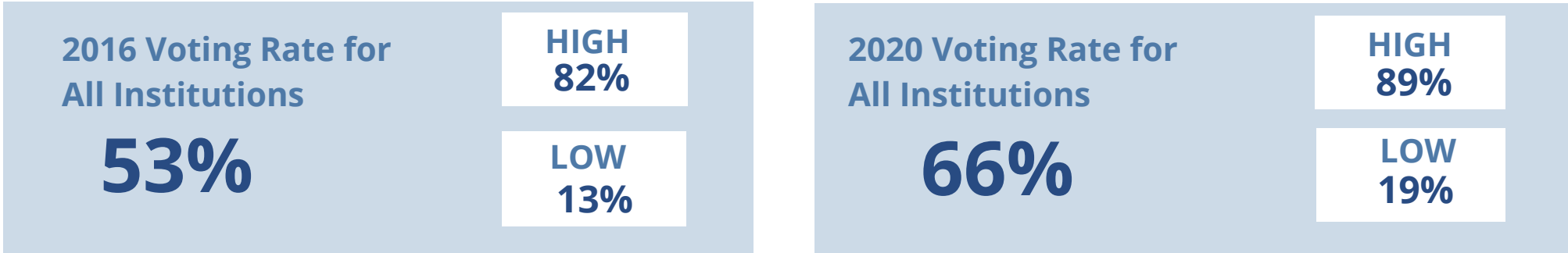
Voting and Registration Rates

	2016	2018	2020	2016-2020 Change (p.p.)
Total Student Enrollment	32,950	34,686	35,176	↑ 2,227
(Age under 18/Unknown)	–	–	–	–
(IPEDS estimated non-resident aliens)	1,613	1,870	1,608	↓ -5
(FERPA records blocked)	44	45	47	↑ 3
(Non-Degree Seeking Students)	167	191	238	↑ 71
Total eligible voters	31,125	32,579	33,283	↑ 2,158
Number of students who registered	25,574	25,038	29,003	↑ 3,429
Number of students who voted	16,703	10,976	22,992	↑ 6,289
Registration Rate %	82	77	87	↑ 5
Voting Rate of Registered Students %	65	44	79	↑ 14
Voting Rate %	54	34	69	↑ 15

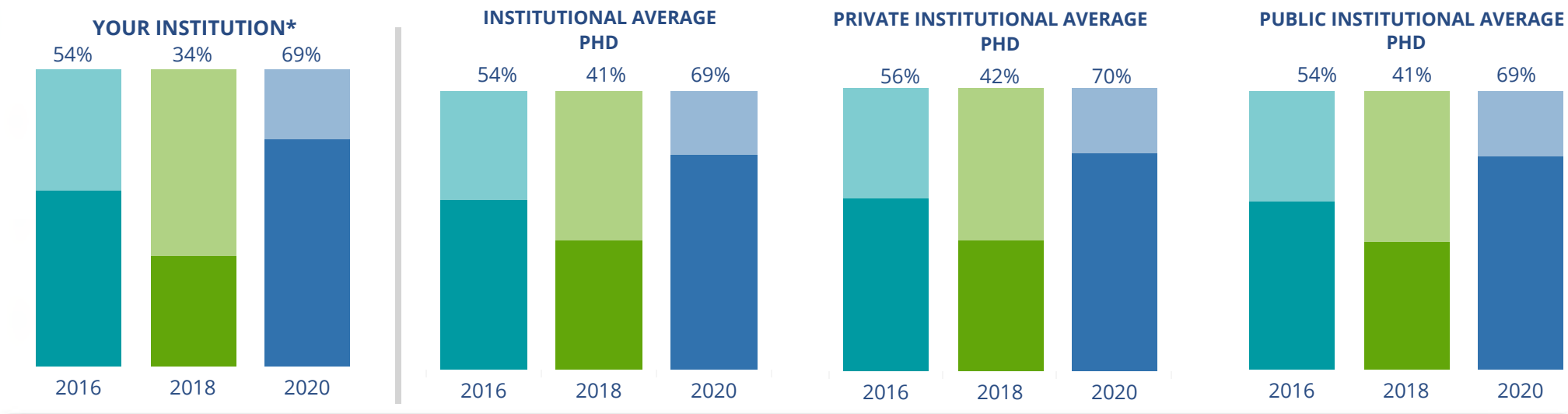
This page provides the numbers we used to calculate your voting, registration, and yield rates. The sub-categories under total student enrollment are the adjustments that we make to account for students who are ineligible to vote due to age or citizenship status. We also exclude, when correctly flagged, students who are not pursuing degrees.

We use IPEDS-derived estimates of NRAs when institutions do not submit non-resident alien status data to NSC, or we cannot verify the accuracy of the reported counts. This estimate is given by "IPEDS estimated non-resident aliens" on this page. If you believe the number of international students reported on this report is incorrect, you can manually adjust your institution's voting rates by using our recalculation tool. <https://id-he.tufts.edu/nsive/nsive-recalculation-tool>.

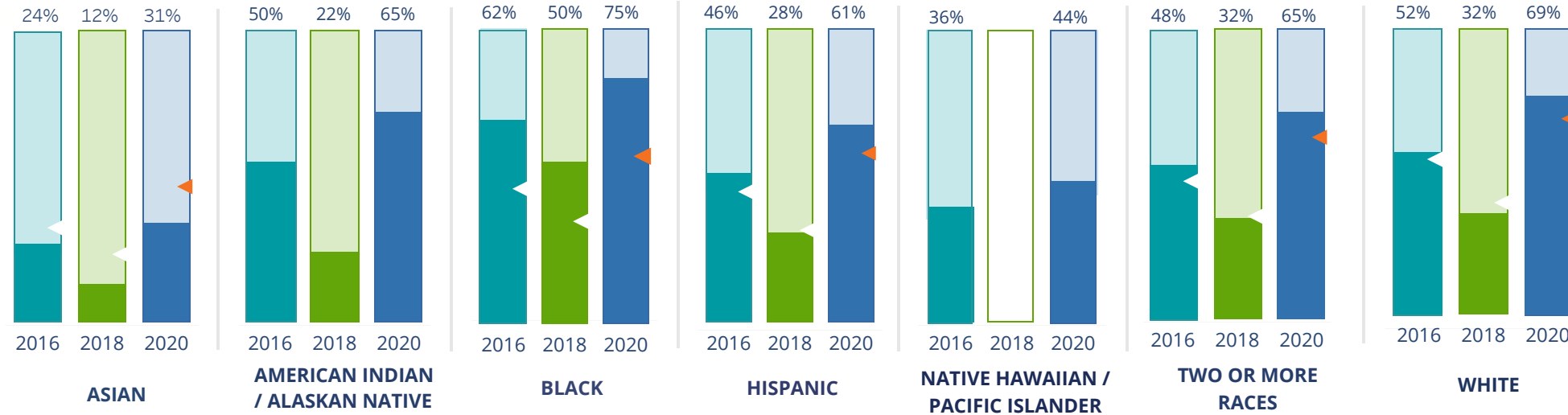
By Institution Types



These are estimated voting rates of your institution compared to the average voting rates of similar institutions in NSLVE. *"Your Institution" chart is presented at a different scale.



By Race / Ethnicity



These are estimated voting rates for race / ethnicity groups. These classifications are provided by campuses and are obtained following race reporting procedures* defined by the National Center for Education Statistics of the Institute of Education Sciences (IES). Please see our FAQ for more detail on why we cannot report national benchmark for some of the demographic groups:

<https://tufts.app.box.com/v/idhe-nsve-report-faq>

If you notice unavailable/missing data in this page, it could mean any of the following for your institution: (i) does not report this data; (ii) did not provide this data in past years; (iii) does not separately submit data for one or more of the demographic groups, or (iv) the data is reported for 10 or fewer students.

* <https://nces.ed.gov/ipeds/report-your-data/race-ethnicity-collecting-data-for-reporting-purposes>

Looking Closer

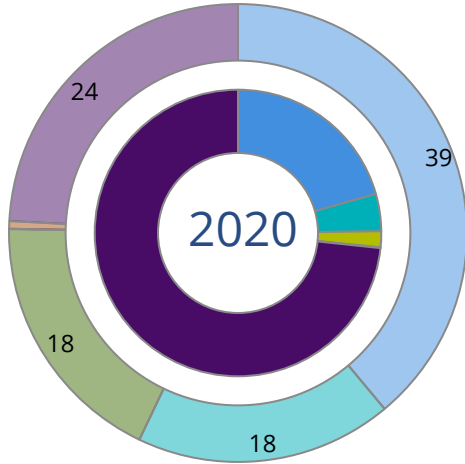
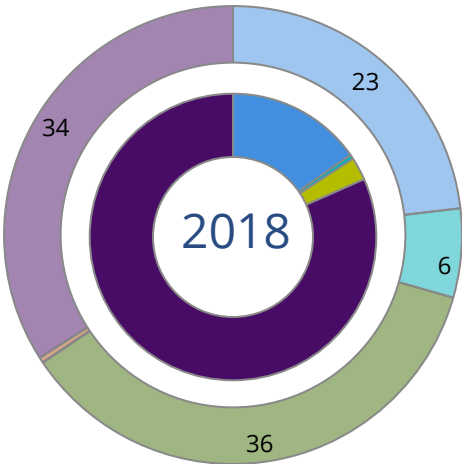
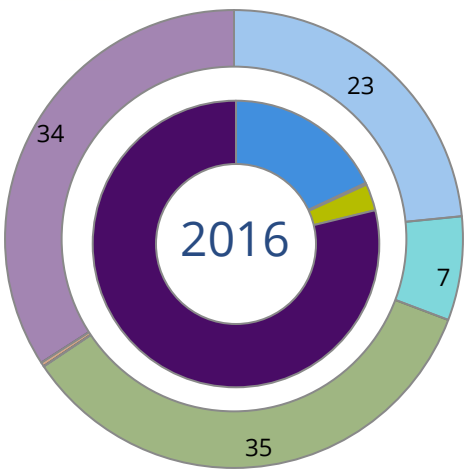
By Race/Ethnicity

This page provides the numbers we used to calculate race / ethnicity group voting rates. We include the counts of students and the change in rates between the two most recent comparable election years. If you notice unavailable/missing data in this page, it could mean any of the following for your institution: (i) does not report this data; (ii) did not provide this data in past years; (iii) does not separately submit data for one or more of the demographic groups, or (iv) the data is reported for 10 or fewer students.

	2016			2018			2020			2016-2020 Change (p.p)
	Enrolled	Voted	Rate	Enrolled	Voted	Rate	Enrolled	Voted	Rate	
Asian	1,409	342	24	2,074	250	12	2,251	695	31	↑ 7
American Indian/ Alaska Native	64	32	50	60	13	22	66	43	65	↑ 15
Black	3,268	2,040	62	3,135	1,559	50	3,334	2,511	75	↑ 13
Hispanic	1,381	638	46	1,546	432	28	1,751	1,062	61	↑ 14
Native Hawaiian/ Pacific Islander	36	13	36	35	-	-	25	11	44	↑ 8
2 or More Races	1,121	543	48	1,233	394	32	1,365	889	65	↑ 17
White	24,993	12,865	51	25,528	8,176	32	25,337	17,512	69	↑ 18
Race Unknown	454	230	51	823	144	17	747	269	36	↓ -15

By Voting Method

Not-In-Person Early Vote In-Person Other Provisional Unknown



	2016		2018		2020		2016-2020	
	Voted	Rate	Voted	Rate	Voted	Rate	Change (p.p.)	
Early Vote	39	0	54	1	967	4	4	↑
In-Person on Election Day	494	3	286	3	422	2	-1	↓
Not-In-Person	3,001	18	1,674	15	4,730	21	3	↑
Other	-	-	-	-	-	-	-	
Provisional	-	-	-	-	19	0	-	
Voting Method Unknown	13,163	79	8,959	82	16,854	73	-6	↓

These are estimated rates for vote method utilization, the number of students utilizing each method, and the percent of students utilizing each method. Not all U.S. states provide information on vote method; voting method for voter files from these states are classified "Voting Method Unknown." For a list of these states, see our FAQ. <https://idhe.tufts.edu/nsive/nsive-faq#CampusReports>

By Age Group

	2016	2018	2020
18-21	48%	26%	66%
22-24	51%	34%	64%
25-29	55%	42%	63%
30-39	59%	48%	62%
40-49	75%	63%	76%
50+	78%	77%	84%

Voting is habit-forming and young voters will usually continue as voters in subsequent elections. Also, young voters are more likely to be contacted by campaigns and are visible, and therefore significant, to elected officials. While in the past, we have seen voting rates increase across age groups, in recent cycles, the most significant increases have been among first-time and the youngest voters. Some colleges serve primarily young students, traditionally viewed as students in the 18-21 or 22-24 categories here. Others have much higher numbers of enrolled older undergraduate or graduate students.

Looking Closer

By Age Group

Here, we provide the numbers of students in each age category and the voting rates for each group. These are based on the student’s age on the day of the election, as calculated by the National Student Clearinghouse using data from student enrollment records.

	2016			2018			2020			2016-2020
	Enrolled	Voted	Rate	Enrolled	Voted	Rate	Enrolled	Voted	Rate	Change (p.p)
18-21	19,996	9,558	48	22,119	5,782	26	23,111	15,329	66	↑ 19
22-24	5,812	2,976	51	5,710	1,950	34	5,484	3,506	64	↑ 13
25-29	3,286	1,794	55	3,163	1,341	42	2,995	1,898	63	↑ 9
30-39	2,244	1,323	59	2,167	1,034	48	2,004	1,249	62	↑ 3
40-49	917	684	75	824	520	63	856	652	76	↑ 2
50+	471	368	78	451	349	77	426	358	84	↑ 6

Looking Closer

By Sex

	2016			2018			2020			2016-2020	
	Enrolled	Voted	Rate	Enrolled	Voted	Rate	Enrolled	Voted	Rate	Change (p.p)	
Female	18,148	10,104	56	18,866	6,684	35	19,360	13,799	71	↑	16
Male	14,574	6,596	45	15,566	4,291	28	15,471	9,157	59	↑	14

These are estimated voting rates for sex groups and the numbers we used to calculate their voting rates. These classifications are provided by campuses and are obtained following the reporting procedures defined by the National Center for Education Statistics (NCES) of the Institute of Education Sciences (IES). Presently, NCES requires institutions to report students as “Male” or “Female” only.*

If you notice missing data in this page, it could mean any of the following for your institution: (i) does not report this data; (ii) did not provide this data in past years; (iii) does not separately submit data for one or more of the demographic groups, or (iv) the data is reported for 10 or fewer students.

*<https://surveys.nces.ed.gov/ipeds/public/survey-materials/faq?faqid=11>

Looking Closer

By Education Level / Undergraduate Class Year

	2016			2018			2020			2016-2020	
	Enrolled	Voted	Rate (%)	Enrolled	Voted	Rate (%)	Enrolled	Voted	Rate (%)	Change (p.p)	
EDUCATION LEVEL											
Undergraduate	24,718	11,989	49	26,632	7,418	28	26,969	17,784	66	↑	17
Graduate	8,006	4,713	59	7,802	3,558	46	7,901	5,207	66	↑	7
Class Unknown	-	-	-	-	-	-	-	-	-	-	-
CLASS YEAR											
First Year	4,957	44	2,187	6,063	21	1,289	5,555	60	3,354	↑	16
Second Year	5,746	46	2,641	6,450	24	1,554	6,473	65	4,199	↑	19
Upper Level	14,024	51	7,166	14,132	32	4,579	14,956	68	10,238	↑	17
ENROLLMENT STATUS											
Full-time	29,290	14,443	49	31,102	9,149	29	31,427	20,503	65	↑	16
Part-time	3,436	2,260	66	3,332	1,827	55	3,449	2,489	72	↑	6

These are estimated voting rates by Education Level (undergraduate/graduate), Class Year, and Enrollment Status (full-time/part-time), and the numbers we used to calculate these rates.

If you notice missing data in this page, it could mean any of the following for your institution: (i) does not report this data; (ii) did not provide this data in past years; (iii) does not separately submit data for one or more of the demographic groups, or (iv) the data is reported for 10 or fewer students.

By Field of Study

FIELDS	2016			2018			2020			2016-2020 RateChange (p.p)
	Enrolled	Voted	Rate	Enrolled	Voted	Rate	Enrolled	Voted	Rate	
Area, Ethnic, Cultural, and Gender Studies	67	38	57	147	60	41	154	114	74	↑ 17
Biological and Biomedical Sciences	3,441	1,702	49	3,495	892	26	3,633	2,385	66	↑ 16
Business, Management, and Marketing	4,895	2,330	48	5,946	1,512	25	6,051	3,743	62	↑ 14
Communication and Journalism	1,567	764	49	1,683	551	33	1,751	1,263	72	↑ 23
Computer and Information Sciences	872	409	47	1,078	343	32	1,214	723	60	↑ 13
Education	2,144	1,444	67	1,742	904	52	1,844	1,413	77	↑ 9
Engineering and Engineering Technologies	2,569	1,142	44	2,662	674	25	2,463	1,406	57	↑ 13

These are estimated voting rates by field of study, and the numbers we used to calculate the field of study rates. For an explanation of CIP codes, please see our FAQ.* There are roughly 8,000 fields of study among U.S. colleges and universities, so we provide rates for condensed categories.

*<https://tufts.app.box.com/v/idhe-nslve-report-faq>

By Field of Study

FIELDS	2016			2018			2020			2016-2020 Change (p.p)
	Enrolled	Voted	Rate	Enrolled	Voted	Rate	Enrolled	Voted	Rate	
English Language and Literature	432	268	62	395	176	45	334	245	73	↑ 11
Foreign Languages, Literatures, and Lingui..	191	100	52	192	89	46	201	133	66	↑ 14
Health Professions	4,662	2,570	55	5,314	1,846	35	5,595	3,980	71	↑ 16
History	353	182	52	320	154	48	323	236	73	↑ 22
Law Enforcement, Firefighting, and Protec..	687	344	50	685	202	29	815	529	65	↑ 15
Legal Professions and Studies	593	384	65	613	308	50	617	464	75	↑ 10
Liberal Arts and Sciences, and Humanities	3,716	1,660	45	3,214	789	25	2,445	1,414	58	↑ 13
Mathematics and Statistics	305	139	46	368	133	36	353	213	60	↑ 15
Natural Resources and Conservation	169	79	47	189	73	39	239	173	72	↑ 26
Parks, Recreation, Leisure, and Fitness Stu..	898	337	38	1,207	219	18	1,445	816	56	↑ 19
Philosophy and Religious Studies	82	50	61	101	48	48	95	67	71	↑ 10
Physical Sciences	611	281	46	606	185	31	486	266	55	↑ 9
Psychology	999	510	51	1,068	356	33	1,408	971	69	↑ 18

By Field of Study

FIELDS	2016			2018			2020			2016-2020 Change (p.p)
	Enrolled	Voted	Rate	Enrolled	Voted	Rate	Enrolled	Voted	Rate	
Public Administration and Social Service Professions	734	451	61	561	270	48	542	424	78	↑ 17
Social Sciences	1,393	739	53	1,450	568	39	1,441	997	69	↑ 16
Visual and Performing Arts	1,015	542	53	1,083	399	37	1,064	716	67	↑ 14
Unknown	14	-	-	11	-	-	15	11	73	-

About This Report

Thank you for participating in the National Study of Learning, Voting, and Engagement.

Since NSLVE's launch in 2013, nearly 1,200 colleges and universities have signed up to receive their voting rates for the 2012, 2014, 2016, 2018, and 2020 federal elections.

Along with others, your institution's participation in this study has allowed us to build a robust database of over 50 million college student records, about 10 million for each election year, that serve as a foundation for innovative research on college student political learning and engagement in democracy.

NSLVE is a signature initiative of the Institute for Democracy and Higher Education (IDHE) at Tufts University's Jonathan M. Tisch College of Civic Life. The mission of IDHE is to shift college and university priorities and culture to advance political learning, agency, and equity. We achieve our mission through research, resource development, technical assistance, and advocacy.

About the Data

The voter registration and voting rates in this report reflect the percentage of your institution's students who were eligible to vote and who actually voted in the 2016, 2018, and 2020 elections.

These results are based on enrollment records your institution submitted to the National Student Clearinghouse (NSC) and publicly available voting files collected by L2 Political.

Enrollment lists are adjusted by deducting students under age 18 (at the time of the election), people identified as non-degree seeking and those identified by campuses as "nonresident aliens" (NRAs) (the federal government's category for mostly international students). Unfortunately, not all campuses report NRAs to NSC. For those campuses, we use IPEDS to calculate the number of NRA students on each campus and adjust NSC enrollment numbers to estimate the number of students to remove. We also quality check NRA removals by verifying that there is little to no discrepancy between the number of international students reported by the campus to IPEDS and to NSC. We cannot adjust subgroup analyses absent identification of NRAs verified by the process above. We welcome closer partnerships with individual colleges and universities to provide more accurate rates. For more on the data and the matching process, see our FAQ on Campus Reports.

University of South Carolina-Columbia

Thank you for the work you do to improve your students' political learning and engagement. We hope that you find your NSLVE report useful. For up-to-date news on NSLVE data, resources, and to sign up for our newsletter visit: <https://idhe.tufts.edu>.

References: IDHE encourages report recipients to share this report as broadly as possible, including posting it on the college or university's website. When doing so, please use the following citation: Institute for Democracy & Higher Education: National Study of Learning, Voting and Engagement. (2021). 2016, 2018, and 2020 report for _____ [name of institution]. Medford, MA.



Barnum Hall
163 Packard Ave.
Medford, MA 02155

tischcollege@tufts.edu
617.627.3453



Institute for Democracy & Higher Education:
National Study of Learning, Voting, and Engagement
Barnum Hall, Medford, MA 02155

Follow Us on Twitter: @TuftsIDHE
NSLVE@tufts.edu
617.627.0620