



# All Campus Democracy Challenge

2016

**UNC**

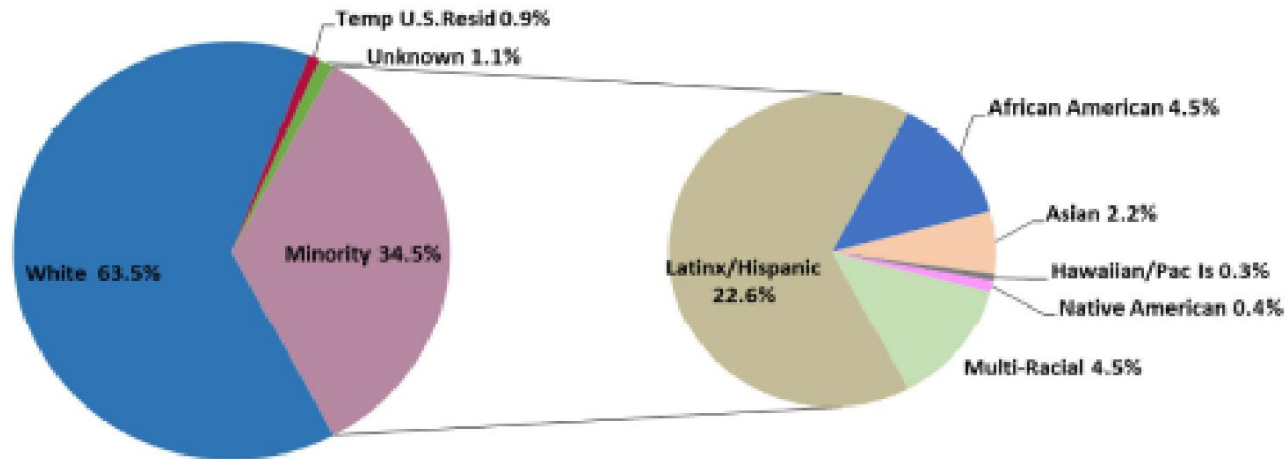


The University of Northern Colorado is located in Greeley, CO, an hour north of Denver. The University was first opened in the late 1880s as the Colorado State Normal School to educate teachers. In 1970 the name of the school was changed to the University of Northern Colorado. As of January 27, 2020, UNC has 8,105 undergraduate students and 2,713 graduate students.

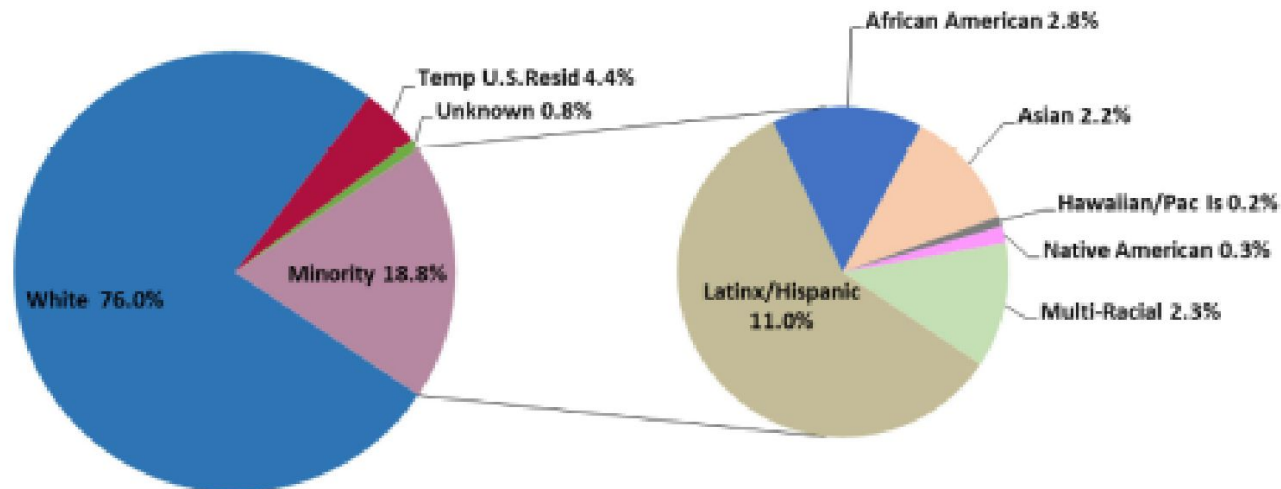


# UNC Spring 2020 Census

## Undergraduate Degree-Seeking Ethnicity/Race Summary

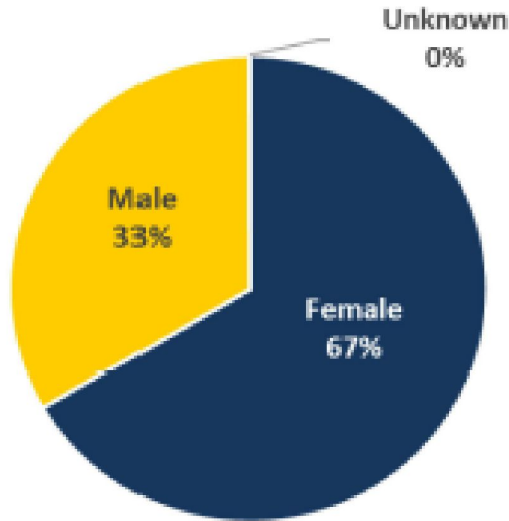


## Graduate Degree-Seeking Ethnicity/Race Summary

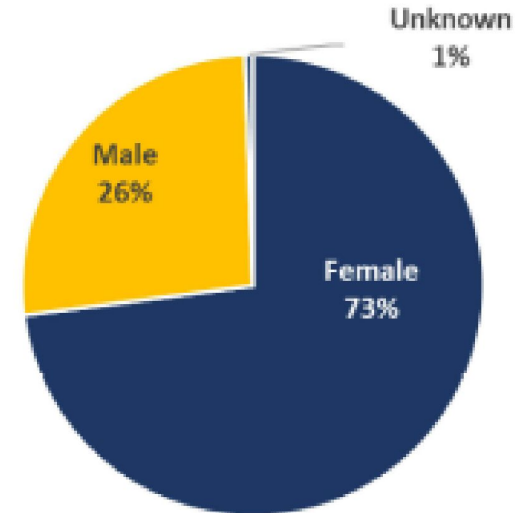




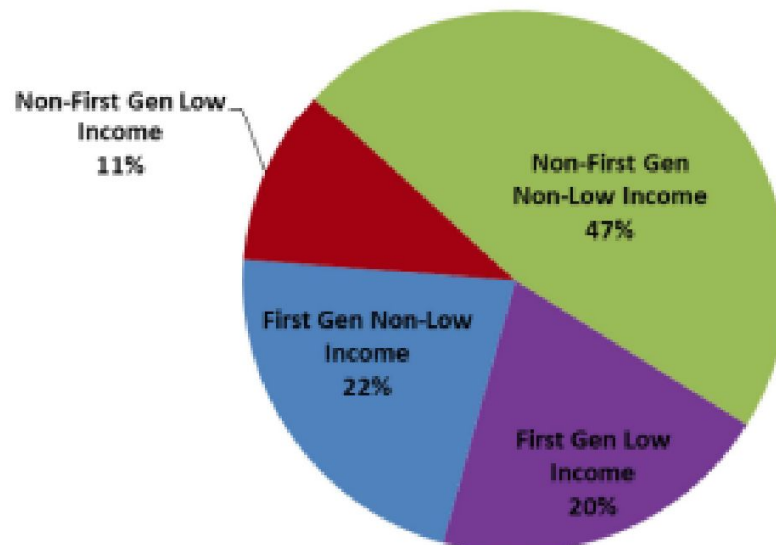
**Undergraduate Degree-Seeking  
Gender**



**Graduate Degree-Seeking  
Gender**



**Undergraduate Degree-Seeking  
First Generation and Low Income**





## Overview

University of Northern Colorado students voted at a rate of 37% in the 2014 midterm elections and 53% in the 2018 midterm elections. UNC's voting rate was higher than other institutions for both elections. Almost 68% of our registered students voted in 2018 and nearly 60% of registered students voted in 2014. Since we know our registered students vote, our goal is to register more students.



# Field of Study Breakdown

When considering this data, significant progress could be made in all areas of study for midterm elections. During election years, we should focus on Engineering, Parks and Recreation and Liberal Arts and Sciences, since they have the lowest voter turnout in 2018. The goal in studying this report is to get an idea on what areas to emphasize voter education, as well as maintain contact and resources for areas that had larger voter turnout. With these efforts, we hope to increase our numbers in future elections.

\* Your students' data broken down by field of study. To provide more accurate voting rates, students ineligible to vote because they were too young, students whose age data was not reported to the Clearinghouse, as well as records that were FERPA blocked are removed from this table. Please note that we are not able to adjust these voting rates by removing non-resident aliens, resident aliens or undocumented students. The green and red highlighted values below represent your campus's top three and bottom three voting rates by field of study.

	2014			2018			Change
	Enrolled	Voted	Rate	Enrolled	Voted	Rate	
Area, Ethnic, Cultural, Gender, and Group Studies	29	*	n/a	49	22	44.9%	n/a
Biological and Biomedical Sciences	395	142	36.0%	512	221	43.2% ↑	7.2
Business, Management, and Marketing	979	307	31.4%	882	411	46.6% ↑	15.2
Communication and Journalism	341	82	24.1%	309	150	48.5% ↑	24.5
Education	1,696	778	45.9%	2,468	1,466	59.4% ↑	13.5
Engineering and Engineering Technologies	36	10	27.8%	67	23	34.3% ↑	6.6
English Language and Literature	231	96	41.6%	217	122	56.2% ↑	14.7
Family and Consumer/Human Sciences	13	*	n/a	*	*	n/a	n/a
Foreign Languages, Literatures, and Linguistics	132	46	34.9%	196	99	50.5% ↑	15.7
Health Professions	1,601	557	34.8%	1,930	988	51.2% ↑	16.4
History	208	85	40.9%	209	133	63.6% ↑	22.8
Law Enforcement, Firefighting, and Protective Services	379	121	31.9%	466	198	42.5% ↑	10.6
Leisure and Recreational Activities	0	0	n/a	10	*	n/a	n/a
Liberal Arts and Sciences, and Humanities	932	374	40.1%	471	196	41.6% ↑	1.5
Mathematics and Statistics	160	55	34.4%	171	91	53.2% ↑	18.8
Multi/Interdisciplinary Studies	893	345	38.6%	227	112	49.3% ↑	10.7
Parks, Recreation, Leisure, and Fitness Studies	827	203	24.6%	792	334	42.2% ↑	17.6
Philosophy and Religious Studies	30	*	n/a	36	18	50.0%	n/a
Physical Sciences	326	104	31.9%	329	156	47.4% ↑	15.5
Psychology	832	283	34.0%	938	485	51.7% ↑	17.7
Social Sciences	442	154	34.8%	480	256	53.3% ↑	18.5
Visual and Performing Arts	844	260	30.8%	998	506	50.7% ↑	19.9
Unknown	*	*	n/a	563	340	60.4%	n/a



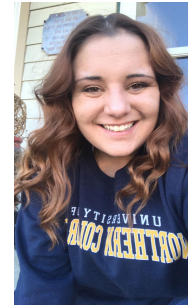
# Point of Contact

**Evan Welch**



Executive Director  
Office of Student Life

**Elena Griego**



Director of Student Affairs, Student Senate



## **Campus Partners**

- **Academic and Community Engagement**
- **University Program Council**
- **Division of Student Affairs**
- **Housing and Residential Education**
- **Dining Services**
- **Department of Political Science**





## **Big Sky Votes Challenge**

Colleges and Universities within the Big Sky Athletic Conference have embraced a Votes Challenge where institutions will work collectively to increase voter registration and voter turnout numbers at their respective institutions by 10% between 2020 and 2024 national elections.



# Voter Education

Student Senate will work on making sure all upcoming debates and voter information is displayed on our social media pages to reach our students virtually. We will also have a questions page where students can go to ask any questions they have about how to vote, where to vote, and anything else they may have.



## Ballot Access

The majority of our students voted with a mail-in ballots at a total of 82% which nearly doubled from 2014 at 43%. Another 12% voted in person and 1.7% voted with an absentee ballot.

UNC is a designated polling location so students will have easier access in November, as well as we have a drop off ballot location making it easier for students to deliver those.



# Get Out The Vote

## Constitution Day

At our Constitution Day event on September 17<sup>th</sup> we plan to have a virtual information session about the constitution and encouraged students to register to vote on National Voter Registration Day, September 22nd.



# Evaluation Process

When the NSLVE data is released, we will compare voter registration and turn out this year to 2018. We'll focus on areas of improvement for the next election cycle.



**THANK YOU!**

**UNC**