



October 2021

Student Voting Rates for University of North Carolina at Charlotte

2020 NSLVE Campus Report



Jonathan M. Tisch
College of Civic Life



INSTITUTE FOR DEMOCRACY
& HIGHER EDUCATION

October 2021

Dear Colleagues:

We are pleased to send this tailored report containing your students' voting rates for 2020. This report contains three years of relevant topline data: 2016, 2018, and 2020. As always, we disaggregate the data so you can better identify and address gaps in participation.

College and university students participated in record-breaking numbers in the 2020 election. In 2016, the Average Institutional Voting Rate was 53%. This year, it jumped to 66%. We encourage you to review Democracy Counts 2020, our most recent national report.

As in past years, we urge you to share this report widely and strategically, particularly with faculty who, in 2020, were often the most consistent communicators with students about ever-changing voting conditions and deadlines. We also urge you to review our recommendations for engaging elections to cultivate a robust and healthy campus climate for political engagement, discourse, equity, and participation: Election Imperatives (2019) and the more recent Election Imperatives: A Time of Physical Distancing and Social Action. Since "pervasive political discussions" and attentiveness to the campus culture around speech and academic freedom are among our top recommendations, we direct you to our discussion guides on talking about your NSLVE report, on free speech and inclusion, and on hot topics, our Making Sense of ... guides.

Finally, we always encourage you to work with us. Help us help you get better data by reaching out. Email IDHE@Tufts.edu for more information. And as always, watch your inbox for our periodic newsletter, IDHE Update, for announcements about upcoming releases and new resources.

Congratulations on engaging your students in the 2020 election. Remember, student political learning is a year-round objective. Elections may be episodic, but student political engagement should not be.

All the Best,
IDHE Team

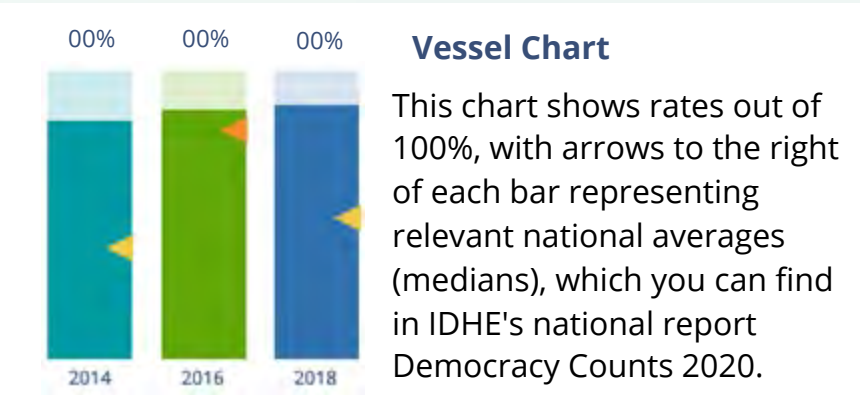


(Top Row from left) Duy Trinh, Program Administrator; Adam Gismondi, Director of Impact; Dave Brinker, Senior Researcher;
(Bottom Row from left) Nancy Thomas, Director; Norma López, Postdoctoral Scholar; Prabhat Gautam, Data Manager.

We also want to acknowledge and thank **Syed Golam Mohaimen, M.S. student in Data Science at Tufts University** for his contributions toward the creation of these reports.

In This Report

This report presents data on student voter participation rates for your campus. The topline counts on page 5 tells you how many students voted, but we encourage you to look carefully at the data on subsequent pages to learn who voted. Data are presented in the form of vessel charts, overlapping donut charts, and tables.



	2014			2018			2014-2018
	Enrolled	Voted	Rate (%)	Enrolled	Voted	Rate (%)	Change (p.p.)
Asian	-	-	-	-	-	-	-
American Indian/ Alaska Native	-	-	-	-	-	-	-
Black	-	-	-	-	-	-	-
Hispanic	-	-	-	-	-	-	-

Tables

The tables show, on the left-side columns, the numbers of students and the rates from 2016, 2018, and 2020. On the left-side, percentage point (p.p.) changes between 2016 and 2020. A red down arrow indicates a decrease, a green up arrow indicates an increase, and a yellow arrow pointing to the right indicates no change. "-" in these tables indicates that the data is unavailable/missing, or is available for 10 or less students.



Voting, Registration and Yield Rates

YOUR INSTITUTION

73.0%

2020 Voting Rate

+21.3

Change From 2016

ALL INSTITUTIONS

66%

2020 Voting Rate

REGISTRATION RATE

Year	Rate
2016	77.3%
2018	80.8%
2020	89.7%

The **Registration Rate** is the percent of your voting-eligible students who registered to vote.

VOTING RATE OF REGISTERED STUDENTS

Year	Rate
2016	66.8%
2018	42.0%
2020	81.3%

The **Voting Rate of Registered Students** is the percent of registered students who voted on Election Day. We often refer to this as the “yield” rate.

VOTING RATE

Year	Rate
2016	51.7%
2018	33.9%
2020	73.0%

The **Voting Rate** is the percentage of eligible students who voted on Election Day. The voting rate is also the product of the registration and yield rates.

Looking Closer

Voting and Registration Rates

	2016	2018	2020	2016-2020 Change (p.p.)
Total Student Enrollment	28,570	29,253	29,579	↑ 1,009
(Age under 18/Unknown)	–	–	–	–
(IPEDS estimated non-resident aliens)	1,980	2,021	1,538	↓ -441
(FERPA records blocked)	99	261	284	↑ 185
(Non-Degree Seeking Students)	1,136	1,103	1,492	↑ 356
Total eligible voters	25,354	25,867	26,264	↑ 910
Number of students who registered	19,611	20,908	23,569	↑ 3,958
Number of students who voted	13,107	8,774	19,163	↑ 6,056
Registration Rate %	77	81	90	↑ 12
Voting Rate of Registered Students %	67	42	81	↑ 14
Voting Rate %	52	34	73	↑ 21

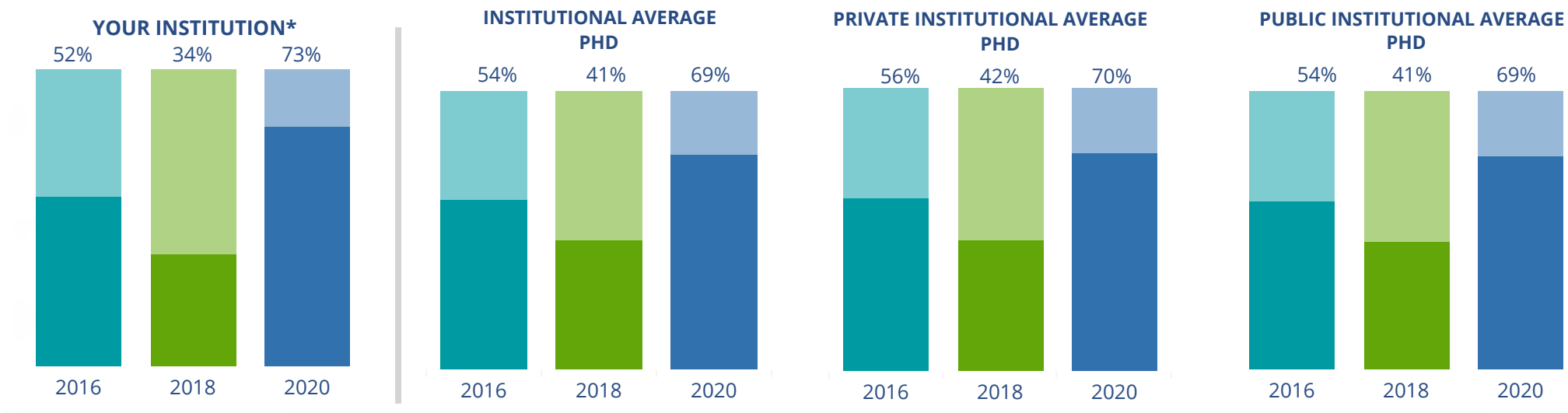
This page provides the numbers we used to calculate your voting, registration, and yield rates. The sub-categories under total student enrollment are the adjustments that we make to account for students who are ineligible to vote due to age or citizenship status. We also exclude, when correctly flagged, students who are not pursuing degrees.

We use IPEDS-derived estimates of NRAs when institutions do not submit non-resident alien status data to NSC, or we cannot verify the accuracy of the reported counts. This estimate is given by "IPEDS estimated non-resident aliens" on this page. If you believe the number of international students reported on this report is incorrect, you can manually adjust your institution's voting rates by using our recalculation tool. <https://id-he.tufts.edu/nsive/nsive-recalculation-tool>.

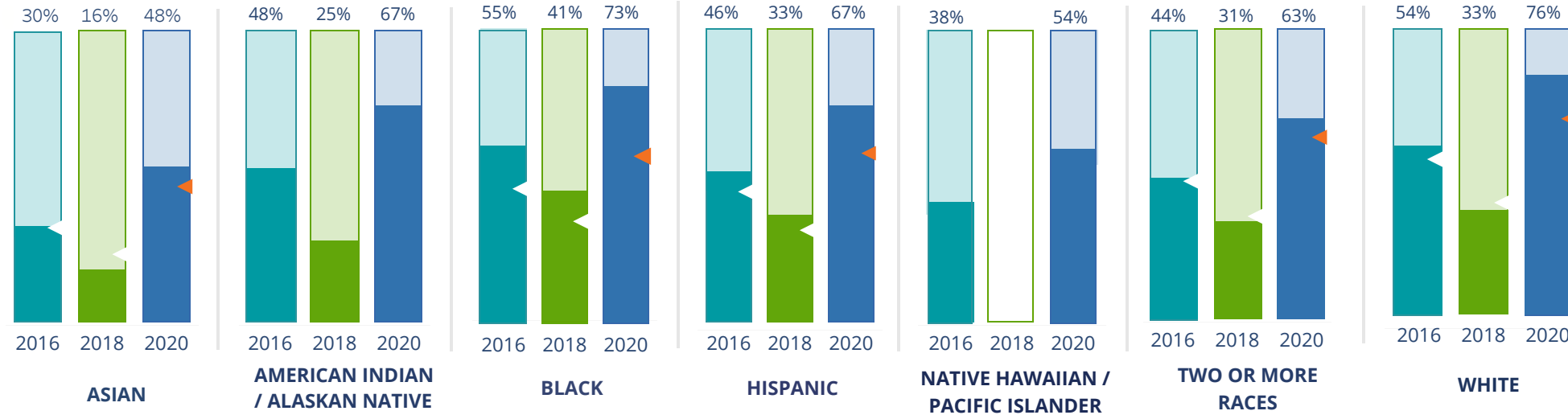
By Institution Types



These are estimated voting rates of your institution compared to the average voting rates of similar institutions in NSLVE. *"Your Institution" chart is presented at a different scale.



By Race / Ethnicity



These are estimated voting rates for race / ethnicity groups. These classifications are provided by campuses and are obtained following race reporting procedures* defined by the National Center for Education Statistics of the Institute of Education Sciences (IES). Please see our FAQ for more detail on why we cannot report national benchmark for some of the demographic groups:

<https://tufts.app.box.com/v/idhe-nsve-report-faq>

If you notice unavailable/missing data in this page, it could mean any of the following for your institution: (i) does not report this data; (ii) did not provide this data in past years; (iii) does not separately submit data for one or more of the demographic groups, or (iv) the data is reported for 10 or fewer students.

* <https://nces.ed.gov/ipeds/report-your-data/race-ethnicity-collecting-data-for-reporting-purposes>

Looking Closer

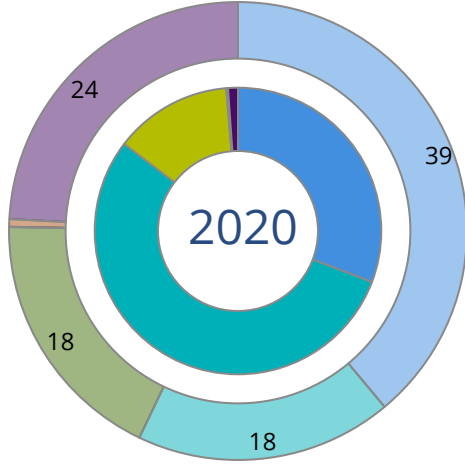
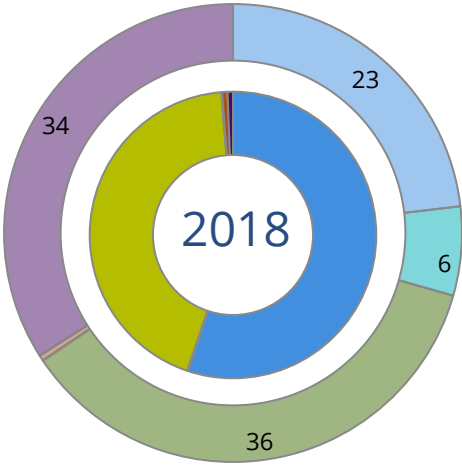
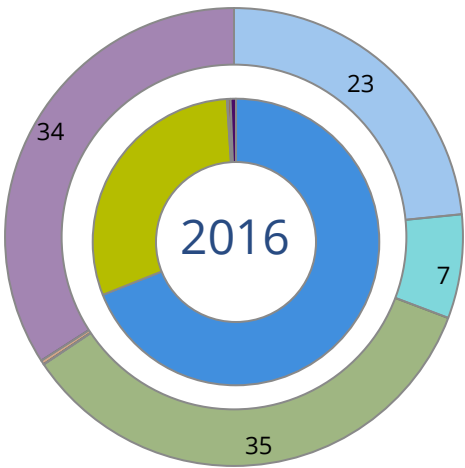
By Race/Ethnicity

This page provides the numbers we used to calculate race / ethnicity group voting rates. We include the counts of students and the change in rates between the two most recent comparable election years. If you notice unavailable/missing data in this page, it could mean any of the following for your institution: (i) does not report this data; (ii) did not provide this data in past years; (iii) does not separately submit data for one or more of the demographic groups, or (iv) the data is reported for 10 or fewer students.

	2016			2018			2020			2016-2020 Change (p.p)
	Enrolled	Voted	Rate	Enrolled	Voted	Rate	Enrolled	Voted	Rate	
Asian	1,628	486	30	2,362	385	16	2,689	1,295	48	↑ 18
American Indian/ Alaska Native	75	36	48	87	22	25	73	49	67	↑ 19
Black	4,182	2,285	55	4,338	1,765	41	4,332	3,150	73	↑ 18
Hispanic	2,374	1,102	46	2,717	896	33	3,095	2,067	67	↑ 20
Native Hawaiian/ Pacific Islander	32	12	38	28	-	-	24	13	54	↑ 17
2 or More Races	1,094	484	44	1,315	407	31	1,480	932	63	↑ 19
White	15,693	8,389	53	15,458	5,104	33	14,997	11,345	76	↑ 22
Race Unknown	2,171	313	14	1,500	190	13	1,029	312	30	↑ 16

By Voting Method

Not-In-Person Early Vote In-Person Other Provisional Unknown



	2016		2018		2020		2016-2020	
	Voted	Rate	Voted	Rate	Voted	Rate	Change (p.p.)	
Early Vote	–	–	–	–	10,466	55	–	
In-Person on Election Day	3,928	30	3,814	44	2,554	13	-17	↓
Not-In-Person	9,041	69	4,831	55	5,894	31	-38	↓
Other	–	–	13	0	–	–	–	
Provisional	34	0	53	1	40	0	0	↓
Voting Method Unknown	89	1	57	1	205	1	0	↑

These are estimated rates for vote method utilization, the number of students utilizing each method, and the percent of students utilizing each method. Not all U.S. states provide information on vote method; voting method for voter files from these states are classified “Voting Method Unknown.” For a list of these states, see our FAQ. <https://idhe.tufts.edu/nsive/nsive-faq#CampusReports>

By Age Group

	2016	2018	2020
18-21	49%	29%	74%
22-24	42%	29%	64%
25-29	43%	32%	57%
30-39	54%	40%	62%
40-49	73%	61%	78%
50+	82%	70%	85%

Voting is habit-forming and young voters will usually continue as voters in subsequent elections. Also, young voters are more likely to be contacted by campaigns and are visible, and therefore significant, to elected officials. While in the past, we have seen voting rates increase across age groups, in recent cycles, the most significant increases have been among first-time and the youngest voters. Some colleges serve primarily young students, traditionally viewed as students in the 18-21 or 22-24 categories here. Others have much higher numbers of enrolled older undergraduate or graduate students.

Looking Closer

By Age Group

Here, we provide the numbers of students in each age category and the voting rates for each group. These are based on the student’s age on the day of the election, as calculated by the National Student Clearinghouse using data from student enrollment records.

	2016			2018			2020			2016-2020	
	Enrolled	Voted	Rate	Enrolled	Voted	Rate	Enrolled	Voted	Rate	Change (p.p)	
18-21	14,290	7,056	49	15,111	4,410	29	15,423	11,363	74	↑	24
22-24	6,470	2,705	42	6,435	1,895	29	6,216	4,002	64	↑	23
25-29	3,471	1,484	43	3,307	1,043	32	3,066	1,745	57	↑	14
30-39	1,996	1,087	54	1,959	790	40	2,025	1,258	62	↑	8
40-49	715	524	73	687	421	61	677	531	78	↑	5
50+	307	251	82	306	215	70	312	264	85	↑	3

Looking Closer

By Sex

	2016			2018			2020			2016-2020	
	Enrolled	Voted	Rate	Enrolled	Voted	Rate	Enrolled	Voted	Rate	Change (p.p)	
Female	13,104	6,942	53	13,286	4,775	36	13,339	9,713	73	↑	20
Male	14,101	6,155	44	14,519	3,999	28	14,380	9,450	66	↑	22

These are estimated voting rates for sex groups and the numbers we used to calculate their voting rates. These classifications are provided by campuses and are obtained following the reporting procedures defined by the National Center for Education Statistics (NCES) of the Institute of Education Sciences (IES). Presently, NCES requires institutions to report students as “Male” or “Female” only.*

If you notice missing data in this page, it could mean any of the following for your institution: (i) does not report this data; (ii) did not provide this data in past years; (iii) does not separately submit data for one or more of the demographic groups, or (iv) the data is reported for 10 or fewer students.

*<https://surveys.nces.ed.gov/ipeds/public/survey-materials/faq?faqid=11>

Looking Closer

By Education Level / Undergraduate Class Year

	2016			2018			2020			2016-2020	
	Enrolled	Voted	Rate (%)	Enrolled	Voted	Rate (%)	Enrolled	Voted	Rate (%)	Change (p.p)	
EDUCATION LEVEL											
Undergraduate	23,027	11,291	49	23,657	7,299	31	23,097	16,362	71	↑	22
Graduate	4,175	1,805	43	4,147	1,475	36	4,622	2,801	61	↑	17
Class Unknown	47	11	23	-	-	-	-	-	-	-	-
CLASS YEAR											
First Year	-	-	-	-	-	-	-	-	-	-	-
Second Year	-	-	-	-	-	-	-	-	-	-	-
Upper Level	-	-	-	-	-	-	-	-	-	-	-
ENROLLMENT STATUS											
Full-time	22,762	10,680	47	23,106	6,885	30	23,271	16,100	69	↑	22
Part-time	4,487	2,427	54	4,699	1,889	40	4,448	3,063	69	↑	15

These are estimated voting rates by Education Level (undergraduate/graduate), Class Year, and Enrollment Status (full-time/part-time), and the numbers we used to calculate these rates.

If you notice missing data in this page, it could mean any of the following for your institution: (i) does not report this data; (ii) did not provide this data in past years; (iii) does not separately submit data for one or more of the demographic groups, or (iv) the data is reported for 10 or fewer students.

By Field of Study

FIELDS	2016			2018			2020			2016-2020 RateChange (p.p)
	Enrolled	Voted	Rate	Enrolled	Voted	Rate	Enrolled	Voted	Rate	
Architecture	317	156	49	298	108	36	314	218	69	↑ 20
Area, Ethnic, Cultural, and Gender Studies	102	43	42	103	41	40	88	50	57	↑ 15
Biological and Biomedical Sciences	1,205	574	48	1,232	389	32	1,346	953	71	↑ 23
Business, Management, and Marketing	4,481	2,115	47	4,353	1,257	29	4,500	3,086	69	↑ 21
Communication and Journalism	1,344	688	51	1,322	436	33	1,021	760	74	↑ 23
Computer and Information Sciences	2,165	772	36	2,897	715	25	3,066	1,760	57	↑ 22
Education	1,641	1,030	63	1,442	640	44	1,562	1,241	79	↑ 17

These are estimated voting rates by field of study, and the numbers we used to calculate the field of study rates. For an explanation of CIP codes, please see our FAQ.* There are roughly 8,000 fields of study among U.S. colleges and universities, so we provide rates for condensed categories.

*<https://tufts.app.box.com/v/idhe-nslve-report-faq>

By Field of Study

FIELDS	2016			2018			2020			2016-2020 Change (p.p)
	Enrolled	Voted	Rate	Enrolled	Voted	Rate	Enrolled	Voted	Rate	
Engineering and Engineering Technologies	3,361	1,360	40	3,503	841	24	3,467	2,262	65	↑ 25
English Language and Literature	479	279	58	442	208	47	399	307	77	↑ 19
Family and Consumer/Human Sciences	50	24	48	42	14	33	39	28	72	↑ 24
Foreign Languages, Literatures, and Lingui..	316	148	47	404	166	41	370	260	70	↑ 23
Health Professions	1,824	1,034	57	2,339	773	33	2,551	1,838	72	↑ 15
History	382	236	62	438	231	53	346	269	78	↑ 16
Law Enforcement, Firefighting, and Protec..	819	417	51	809	255	32	780	551	71	↑ 20
Liberal Arts and Sciences, and Humanities	2,586	1,177	46	2,377	613	26	2,107	1,415	67	↑ 22
Mathematics and Statistics	463	187	40	433	130	30	401	243	61	↑ 20
Multi/Interdisciplinary Studies	313	131	42	320	109	34	213	134	63	↑ 21
Parks, Recreation, Leisure, and Fitness Stu..	943	441	47	919	236	26	822	578	70	↑ 24
Philosophy and Religious Studies	128	65	51	141	59	42	122	94	77	↑ 26
Physical Sciences	745	343	46	679	214	32	681	473	69	↑ 23
Psychology	1,244	631	51	1,124	398	35	1,257	927	74	↑ 23

By Field of Study

FIELDS	2016			2018			2020			2016-2020 Change (p.p)
	Enrolled	Voted	Rate	Enrolled	Voted	Rate	Enrolled	Voted	Rate	
Public Administration and Social Service Professions	502	293	58	477	250	52	555	431	78	↑ 19
Social Sciences	1,158	653	56	1,104	476	43	1,029	762	74	↑ 18
Visual and Performing Arts	539	274	51	600	211	35	669	512	77	↑ 26
Unknown	142	36	25	–	–	–	14	11	79	↑ 53

About This Report

Thank you for participating in the National Study of Learning, Voting, and Engagement.

Since NSLVE's launch in 2013, nearly 1,200 colleges and universities have signed up to receive their voting rates for the 2012, 2014, 2016, 2018, and 2020 federal elections.

Along with others, your institution's participation in this study has allowed us to build a robust database of over 50 million college student records, about 10 million for each election year, that serve as a foundation for innovative research on college student political learning and engagement in democracy.

NSLVE is a signature initiative of the Institute for Democracy and Higher Education (IDHE) at Tufts University's Jonathan M. Tisch College of Civic Life. The mission of IDHE is to shift college and university priorities and culture to advance political learning, agency, and equity. We achieve our mission through research, resource development, technical assistance, and advocacy.

About the Data

The voter registration and voting rates in this report reflect the percentage of your institution's students who were eligible to vote and who actually voted in the 2016, 2018, and 2020 elections.

These results are based on enrollment records your institution submitted to the National Student Clearinghouse (NSC) and publicly available voting files collected by L2 Political.

Enrollment lists are adjusted by deducting students under age 18 (at the time of the election), people identified as non-degree seeking and those identified by campuses as "nonresident aliens" (NRAs) (the federal government's category for mostly international students). Unfortunately, not all campuses report NRAs to NSC. For those campuses, we use IPEDS to calculate the number of NRA students on each campus and adjust NSC enrollment numbers to estimate the number of students to remove. We also quality check NRA removals by verifying that there is little to no discrepancy between the number of international students reported by the campus to IPEDS and to NSC. We cannot adjust subgroup analyses absent identification of NRAs verified by the process above. We welcome closer partnerships with individual colleges and universities to provide more accurate rates. For more on the data and the matching process, see our FAQ on Campus Reports.

University of North Carolina at Charlotte

Thank you for the work you do to improve your students' political learning and engagement. We hope that you find your NSLVE report useful. For up-to-date news on NSLVE data, resources, and to sign up for our newsletter visit: <https://idhe.tufts.edu>.

References: IDHE encourages report recipients to share this report as broadly as possible, including posting it on the college or university's website. When doing so, please use the following citation: Institute for Democracy & Higher Education: National Study of Learning, Voting and Engagement. (2021). 2016, 2018, and 2020 report for _____ [name of institution]. Medford, MA.



Barnum Hall
163 Packard Ave.
Medford, MA 02155

tischcollege@tufts.edu
617.627.3453



Institute for Democracy & Higher Education:
National Study of Learning, Voting, and Engagement
Barnum Hall, Medford, MA 02155

Follow Us on Twitter: @TuftsIDHE
NSLVE@tufts.edu
617.627.0620