



October 2021

Student Voting Rates for University of North Carolina at Greensboro

2020 NSLVE Campus Report



Jonathan M. Tisch
College of Civic Life



INSTITUTE FOR DEMOCRACY
& HIGHER EDUCATION

October 2021

Dear Colleagues:

We are pleased to send this tailored report containing your students' voting rates for 2020. This report contains three years of relevant topline data: 2016, 2018, and 2020. As always, we disaggregate the data so you can better identify and address gaps in participation.

College and university students participated in record-breaking numbers in the 2020 election. In 2016, the Average Institutional Voting Rate was 53%. This year, it jumped to 66%. We encourage you to review Democracy Counts 2020, our most recent national report.

As in past years, we urge you to share this report widely and strategically, particularly with faculty who, in 2020, were often the most consistent communicators with students about ever-changing voting conditions and deadlines. We also urge you to review our recommendations for engaging elections to cultivate a robust and healthy campus climate for political engagement, discourse, equity, and participation: Election Imperatives (2019) and the more recent Election Imperatives: A Time of Physical Distancing and Social Action. Since "pervasive political discussions" and attentiveness to the campus culture around speech and academic freedom are among our top recommendations, we direct you to our discussion guides on talking about your NSLVE report, on free speech and inclusion, and on hot topics, our Making Sense of ... guides.

Finally, we always encourage you to work with us. Help us help you get better data by reaching out. Email IDHE@Tufts.edu for more information. And as always, watch your inbox for our periodic newsletter, IDHE Update, for announcements about upcoming releases and new resources.

Congratulations on engaging your students in the 2020 election. Remember, student political learning is a year-round objective. Elections may be episodic, but student political engagement should not be.

All the Best,
IDHE Team

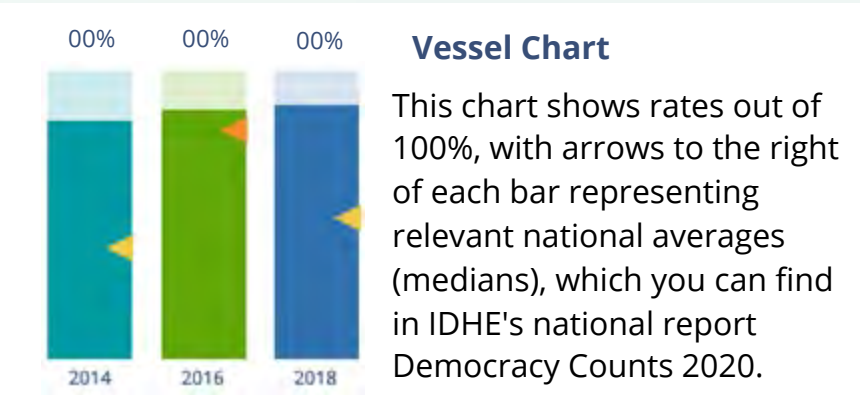


(Top Row from left) Duy Trinh, Program Administrator; Adam Gismondi, Director of Impact; Dave Brinker, Senior Researcher;
(Bottom Row from left) Nancy Thomas, Director; Norma López, Postdoctoral Scholar; Prabhat Gautam, Data Manager.

We also want to acknowledge and thank **Syed Golam Mohaimen, M.S. student in Data Science at Tufts University** for his contributions toward the creation of these reports.

In This Report

This report presents data on student voter participation rates for your campus. The topline counts on page 5 tells you how many students voted, but we encourage you to look carefully at the data on subsequent pages to learn who voted. Data are presented in the form of vessel charts, overlapping donut charts, and tables.



	2014			2018			2014-2018
	Enrolled	Voted	Rate (%)	Enrolled	Voted	Rate (%)	Change (p.p.)
Asian	-	-	-	-	-	-	-
American Indian/ Alaska Native	-	-	-	-	-	-	-
Black	-	-	-	-	-	-	-
Hispanic	-	-	-	-	-	-	-

Tables

The tables show, on the left-side columns, the numbers of students and the rates from 2016, 2018, and 2020. On the left-side, percentage point (p.p.) changes between 2016 and 2020. A red down arrow indicates a decrease, a green up arrow indicates an increase, and a yellow arrow pointing to the right indicates no change. "-" in these tables indicates that the data is unavailable/missing, or is available for 10 or less students.



Voting, Registration and Yield Rates

YOUR INSTITUTION

73.9%

2020 Voting Rate

+16.9

Change From 2016

ALL INSTITUTIONS

66%

2020 Voting Rate

REGISTRATION RATE

Year	Rate
2016	77.9%
2018	89.2%
2020	91.0%

The **Registration Rate** is the percent of your voting-eligible students who registered to vote.

VOTING RATE OF REGISTERED STUDENTS

Year	Rate
2016	73.2%
2018	49.9%
2020	81.2%

The **Voting Rate of Registered Students** is the percent of registered students who voted on Election Day. We often refer to this as the “yield” rate.

VOTING RATE

Year	Rate
2016	57.0%
2018	44.5%
2020	73.9%

The **Voting Rate** is the percentage of eligible students who voted on Election Day. The voting rate is also the product of the registration and yield rates.

Looking Closer

Voting and Registration Rates

	2016	2018	2020	2016-2020 Change (p.p.)
Total Student Enrollment	19,359	18,300	18,967	↓ -392
(Age under 18/Unknown)	55	–	–	–
(IPEDS estimated non-resident aliens)	662	576	476	↓ -185
(FERPA records blocked)	238	170	153	↓ -85
(Non-Degree Seeking Students)	108	–	461	↑ 353
Total eligible voters	18,296	17,554	17,877	↓ -419
Number of students who registered	14,252	15,664	16,272	↑ 2,020
Number of students who voted	10,428	7,820	13,218	↑ 2,790
Registration Rate %	78	89	91	↑ 13
Voting Rate of Registered Students %	73	50	81	↑ 8
Voting Rate %	57	45	74	↑ 17

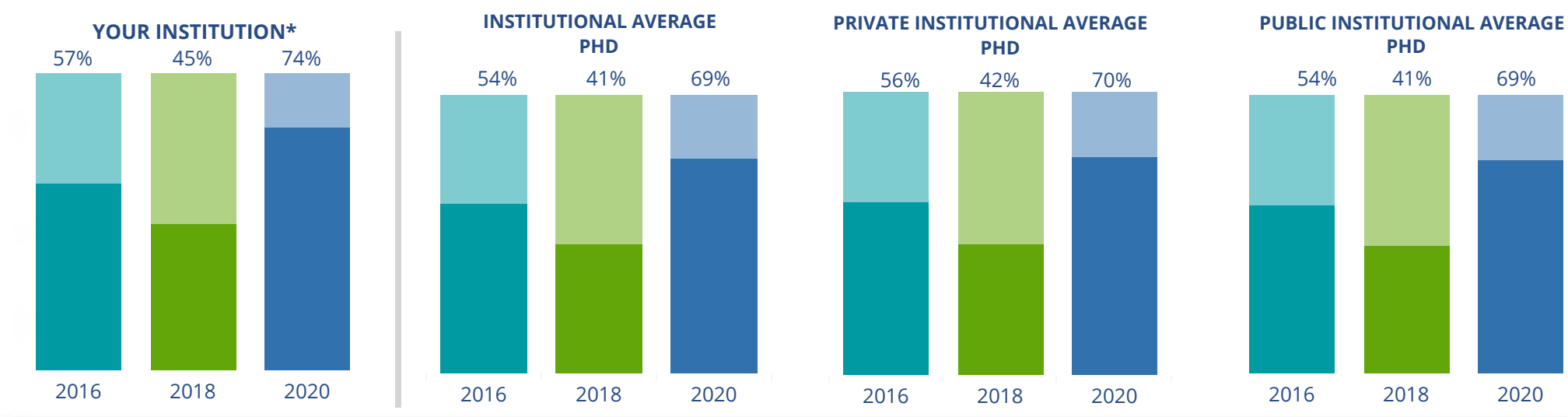
This page provides the numbers we used to calculate your voting, registration, and yield rates. The sub-categories under total student enrollment are the adjustments that we make to account for students who are ineligible to vote due to age or citizenship status. We also exclude, when correctly flagged, students who are not pursuing degrees.

We use IPEDS-derived estimates of NRAs when institutions do not submit non-resident alien status data to NSC, or we cannot verify the accuracy of the reported counts. This estimate is given by "IPEDS estimated non-resident aliens" on this page. If you believe the number of international students reported on this report is incorrect, you can manually adjust your institution's voting rates by using our recalculation tool. <https://id-he.tufts.edu/nsive/nsive-recalculation-tool>.

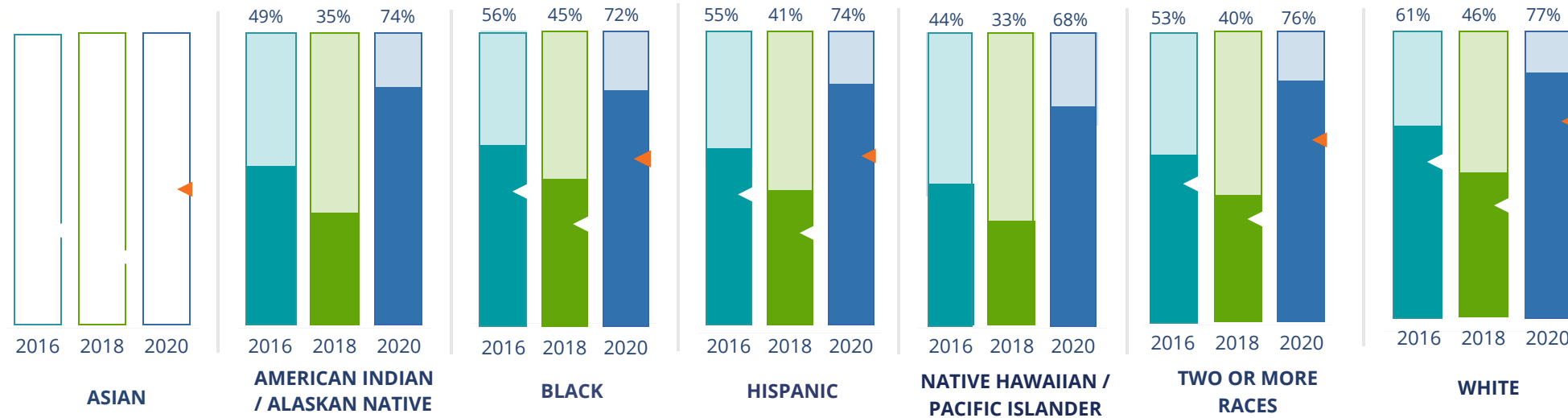
By Institution Types



These are estimated voting rates of your institution compared to the average voting rates of similar institutions in NSLVE. *"Your Institution" chart is presented at a different scale.



By Race / Ethnicity



These are estimated voting rates for race / ethnicity groups. These classifications are provided by campuses and are obtained following race reporting procedures* defined by the National Center for Education Statistics of the Institute of Education Sciences (IES). Please see our FAQ for more detail on why we cannot report national benchmark for some of the demographic groups:

<https://tufts.app.box.com/v/idhe-nsve-report-faq>

If you notice unavailable/missing data in this page, it could mean any of the following for your institution: (i) does not report this data; (ii) did not provide this data in past years; (iii) does not separately submit data for one or more of the demographic groups, or (iv) the data is reported for 10 or fewer students.

* <https://nces.ed.gov/ipeds/report-your-data/race-ethnicity-collecting-data-for-reporting-purposes>

Looking Closer

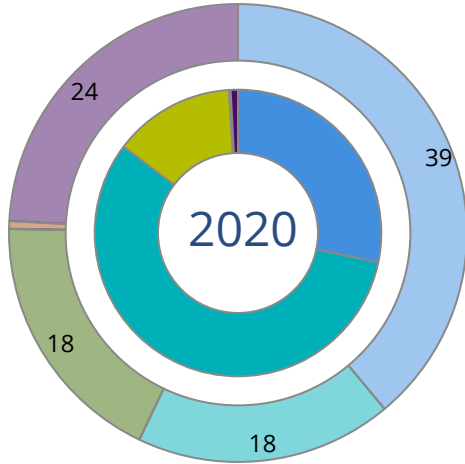
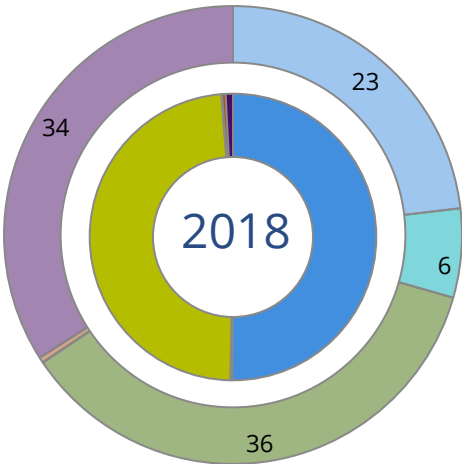
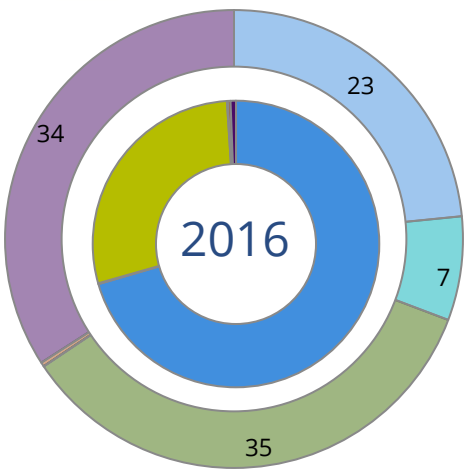
By Race/Ethnicity

This page provides the numbers we used to calculate race / ethnicity group voting rates. We include the counts of students and the change in rates between the two most recent comparable election years. If you notice unavailable/missing data in this page, it could mean any of the following for your institution: (i) does not report this data; (ii) did not provide this data in past years; (iii) does not separately submit data for one or more of the demographic groups, or (iv) the data is reported for 10 or fewer students.

	2016			2018			2020			2016-2020 Change (p.p)
	Enrolled	Voted	Rate	Enrolled	Voted	Rate	Enrolled	Voted	Rate	
Asian	–	–	–	–	–	–	–	–	–	–
American Indian/ Alaska Native	65	32	49	49	17	35	19	14	74	↑ 24
Black	4,788	2,676	56	3,442	1,553	45	1,363	987	72	↑ 17
Hispanic	1,219	667	55	981	406	41	403	300	74	↑ 20
Native Hawaiian/ Pacific Islander	699	310	44	524	172	33	199	136	68	↑ 24
2 or More Races	854	448	52	650	259	40	240	182	76	↑ 23
White	9,095	5,506	61	5,720	2,614	46	2,059	1,594	77	↑ 17
Race Unknown	2,225	789	35	6,762	2,799	41	14,057	10,005	71	↑ 36

By Voting Method

Not-In-Person Early Vote In-Person Other Provisional Unknown



	2016		2018		2020		2016-2020	
	Voted	Rate	Voted	Rate	Voted	Rate	Change (p.p.)	
Early Vote	–	–	13	0	7,529	57	–	
In-Person on Election Day	2,964	28	3,785	48	1,814	14	-15	↓
Not-In-Person	7,352	71	3,916	50	3,744	28	-42	↓
Other	–	–	–	–	–	–	–	
Provisional	35	0	33	0	23	0	0	↓
Voting Method Unknown	61	1	64	1	105	1	0	↑

These are estimated rates for vote method utilization, the number of students utilizing each method, and the percent of students utilizing each method. Not all U.S. states provide information on vote method; voting method for voter files from these states are classified “Voting Method Unknown.” For a list of these states, see our FAQ. <https://idhe.tufts.edu/nsive/nsive-faq#CampusReports>

By Age Group

	2016	2018	2020
18-21	51%	37%	73%
22-24	51%	42%	69%
25-29	57%	47%	67%
30-39	65%	56%	71%
40-49	77%	68%	82%
50+	80%	74%	86%

Voting is habit-forming and young voters will usually continue as voters in subsequent elections. Also, young voters are more likely to be contacted by campaigns and are visible, and therefore significant, to elected officials. While in the past, we have seen voting rates increase across age groups, in recent cycles, the most significant increases have been among first-time and the youngest voters. Some colleges serve primarily young students, traditionally viewed as students in the 18-21 or 22-24 categories here. Others have much higher numbers of enrolled older undergraduate or graduate students.

Looking Closer

By Age Group

Here, we provide the numbers of students in each age category and the voting rates for each group. These are based on the student’s age on the day of the election, as calculated by the National Student Clearinghouse using data from student enrollment records.

	2016			2018			2020			2016-2020 Change (p.p)
	Enrolled	Voted	Rate	Enrolled	Voted	Rate	Enrolled	Voted	Rate	
18-21	9,844	5,059	51	9,737	3,604	37	9,417	6,890	73	↑ 22
22-24	3,739	1,891	51	3,405	1,417	42	3,631	2,496	69	↑ 18
25-29	2,236	1,273	57	1,993	946	47	2,049	1,363	67	↑ 10
30-39	1,789	1,169	65	1,696	946	56	1,878	1,332	71	↑ 6
40-49	941	720	77	883	600	68	928	759	82	↑ 5
50+	396	316	80	414	307	74	437	378	86	↑ 7

Looking Closer

By Sex

	2016			2018			2020			2016-2020	
	Enrolled	Voted	Rate	Enrolled	Voted	Rate	Enrolled	Voted	Rate	Change (p.p)	
Female	12,568	7,268	58	8,199	3,848	47	3,108	2,318	75	↑	17
Male	6,365	3,152	50	3,878	1,591	41	1,659	1,114	67	↑	18

These are estimated voting rates for sex groups and the numbers we used to calculate their voting rates. These classifications are provided by campuses and are obtained following the reporting procedures defined by the National Center for Education Statistics (NCES) of the Institute of Education Sciences (IES). Presently, NCES requires institutions to report students as “Male” or “Female” only.*

If you notice missing data in this page, it could mean any of the following for your institution: (i) does not report this data; (ii) did not provide this data in past years; (iii) does not separately submit data for one or more of the demographic groups, or (iv) the data is reported for 10 or fewer students.

*<https://surveys.nces.ed.gov/ipeds/public/survey-materials/faq?faqid=11>

Looking Closer

By Education Level / Undergraduate Class Year

	2016			2018			2020			2016-2020	
	Enrolled	Voted	Rate (%)	Enrolled	Voted	Rate (%)	Enrolled	Voted	Rate (%)	Change (p.p)	
EDUCATION LEVEL											
Undergraduate	15,548	8,338	54	15,400	6,134	40	15,328	11,036	72	↑	18
Graduate	2,643	1,687	64	2,581	1,595	62	3,012	2,182	72	↑	9
Class Unknown	754	403	53	147	42	29	-	-	-	-	-
CLASS YEAR											
First Year	3,599	51	1,836	-	-	-	-	-	-	-	-
Second Year	3,258	53	1,731	-	-	-	-	-	-	-	-
Upper Level	8,691	55	4,771	-	-	-	-	-	-	-	-
ENROLLMENT STATUS											
Full-time	15,407	8,082	52	14,674	5,907	40	14,734	10,544	72	↑	19
Part-time	3,538	2,346	66	3,454	1,913	55	3,606	2,674	74	↑	8

These are estimated voting rates by Education Level (undergraduate/graduate), Class Year, and Enrollment Status (full-time/part-time), and the numbers we used to calculate these rates.

If you notice missing data in this page, it could mean any of the following for your institution: (i) does not report this data; (ii) did not provide this data in past years; (iii) does not separately submit data for one or more of the demographic groups, or (iv) the data is reported for 10 or fewer students.

By Field of Study

FIELDS	2016			2018			2020			2016-2020 RateChange (p.p)
	Enrolled	Voted	Rate	Enrolled	Voted	Rate	Enrolled	Voted	Rate	
Architecture	-	-	-	-	-	-	-	-	-	-
Area, Ethnic, Cultural, and Gender Studies	65	35	54	83	39	47	55	41	75	↑ 21
Biological and Biomedical Sciences	1,390	689	50	1,209	440	36	1,360	929	68	↑ 19
Business, Management, and Marketing	2,895	1,494	52	2,891	1,107	38	3,025	2,067	68	↑ 17
Communication and Journalism	713	403	57	704	304	43	691	508	74	↑ 17
Computer and Information Sciences	885	433	49	878	340	39	1,123	672	60	↑ 11
Education	1,276	829	65	1,700	845	50	1,563	1,235	79	↑ 14

These are estimated voting rates by field of study, and the numbers we used to calculate the field of study rates. For an explanation of CIP codes, please see our FAQ.* There are roughly 8,000 fields of study among U.S. colleges and universities, so we provide rates for condensed categories.

*<https://tufts.app.box.com/v/idhe-nslve-report-faq>

By Field of Study

FIELDS	2016			2018			2020			2016-2020 Change (p.p)
	Enrolled	Voted	Rate	Enrolled	Voted	Rate	Enrolled	Voted	Rate	
English Language and Literature	398	234	59	311	163	52	273	211	77	↑ 18
Family and Consumer/Human Sciences	1,039	588	57	886	369	42	762	550	72	↑ 16
Foreign Languages, Literatures, and Lingui..	146	87	60	182	86	47	123	97	79	↑ 19
Health Professions	1,963	1,170	60	1,961	847	43	1,971	1,491	76	↑ 16
History	249	168	67	208	111	53	208	154	74	↑ 7
Liberal Arts and Sciences, and Humanities	968	562	58	894	409	46	678	528	78	↑ 20
Mathematics and Statistics	149	67	45	91	41	45	112	67	60	↑ 15
Multi/Interdisciplinary Studies	418	225	54	548	258	47	609	465	76	↑ 23
Natural Resources and Conservation	–	–	–	–	–	–	78	59	76	–
Parks, Recreation, Leisure, and Fitness Stu..	1,244	624	50	1,158	424	37	1,128	787	70	↑ 20
Philosophy and Religious Studies	77	52	68	103	50	49	112	80	71	↑ 4
Physical Sciences	232	115	50	239	103	43	241	152	63	↑ 14
Psychology	915	474	52	942	358	38	1,076	775	72	↑ 20

By Field of Study

FIELDS	2016			2018			2020			2016-2020 Change (p.p)
	Enrolled	Voted	Rate	Enrolled	Voted	Rate	Enrolled	Voted	Rate	
Public Administration and Social Service Professions	412	243	59	464	211	45	457	314	69	↑ 10
Social Sciences	1,091	592	54	1,006	488	49	914	680	74	↑ 20
Visual and Performing Arts	1,403	726	52	1,351	601	44	1,393	1,025	74	↑ 22
Unknown	736	388	53	21	13	62	-	-	-	-

About This Report

Thank you for participating in the National Study of Learning, Voting, and Engagement.

Since NSLVE's launch in 2013, nearly 1,200 colleges and universities have signed up to receive their voting rates for the 2012, 2014, 2016, 2018, and 2020 federal elections.

Along with others, your institution's participation in this study has allowed us to build a robust database of over 50 million college student records, about 10 million for each election year, that serve as a foundation for innovative research on college student political learning and engagement in democracy.

NSLVE is a signature initiative of the Institute for Democracy and Higher Education (IDHE) at Tufts University's Jonathan M. Tisch College of Civic Life. The mission of IDHE is to shift college and university priorities and culture to advance political learning, agency, and equity. We achieve our mission through research, resource development, technical assistance, and advocacy.

About the Data

The voter registration and voting rates in this report reflect the percentage of your institution's students who were eligible to vote and who actually voted in the 2016, 2018, and 2020 elections.

These results are based on enrollment records your institution submitted to the National Student Clearinghouse (NSC) and publicly available voting files collected by L2 Political.

Enrollment lists are adjusted by deducting students under age 18 (at the time of the election), people identified as non-degree seeking and those identified by campuses as "nonresident aliens" (NRAs) (the federal government's category for mostly international students). Unfortunately, not all campuses report NRAs to NSC. For those campuses, we use IPEDS to calculate the number of NRA students on each campus and adjust NSC enrollment numbers to estimate the number of students to remove. We also quality check NRA removals by verifying that there is little to no discrepancy between the number of international students reported by the campus to IPEDS and to NSC. We cannot adjust subgroup analyses absent identification of NRAs verified by the process above. We welcome closer partnerships with individual colleges and universities to provide more accurate rates. For more on the data and the matching process, see our FAQ on Campus Reports.

University of North Carolina at Greensboro

Thank you for the work you do to improve your students' political learning and engagement. We hope that you find your NSLVE report useful. For up-to-date news on NSLVE data, resources, and to sign up for our newsletter visit: <https://idhe.tufts.edu>.

References: IDHE encourages report recipients to share this report as broadly as possible, including posting it on the college or university's website. When doing so, please use the following citation: Institute for Democracy & Higher Education: National Study of Learning, Voting and Engagement. (2021). 2016, 2018, and 2020 report for _____ [name of institution]. Medford, MA.



Barnum Hall
163 Packard Ave.
Medford, MA 02155

tischcollege@tufts.edu
617.627.3453



Institute for Democracy & Higher Education:
National Study of Learning, Voting, and Engagement
Barnum Hall, Medford, MA 02155

Follow Us on Twitter: @TuftsIDHE
NSLVE@tufts.edu
617.627.0620