



October 2021

Student Voting Rates for University Of Nevada-Reno

2020 NSLVE Campus Report

October 2021

Dear Colleagues:

We are pleased to send this tailored report containing your students' voting rates for 2020. This report contains three years of relevant topline data: 2016, 2018, and 2020. As always, we disaggregate the data so you can better identify and address gaps in participation.

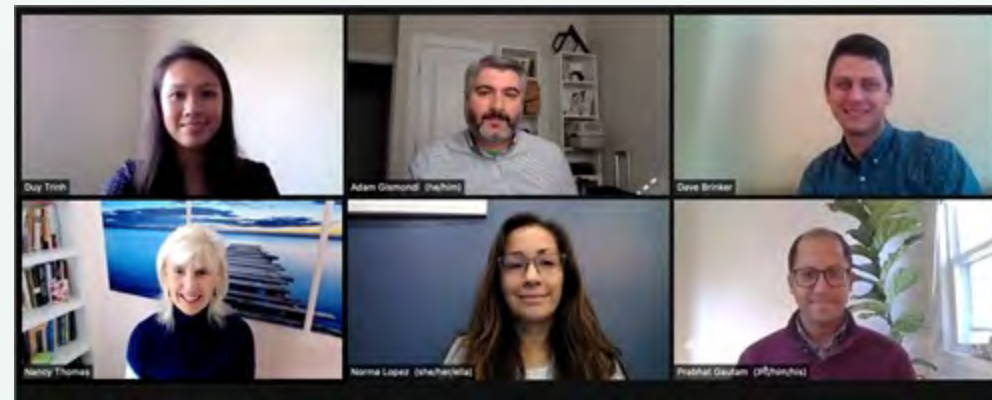
College and university students participated in record-breaking numbers in the 2020 election. In 2016, the Average Institutional Voting Rate was 53%. This year, it jumped to 66%. We encourage you to review Democracy Counts 2020, our most recent national report.

As in past years, we urge you to share this report widely and strategically, particularly with faculty who, in 2020, were often the most consistent communicators with students about ever-changing voting conditions and deadlines. We also urge you to review our recommendations for engaging elections to cultivate a robust and healthy campus climate for political engagement, discourse, equity, and participation: Election Imperatives (2019) and the more recent Election Imperatives: A Time of Physical Distancing and Social Action. Since "pervasive political discussions" and attentiveness to the campus culture around speech and academic freedom are among our top recommendations, we direct you to our discussion guides on talking about your NSLVE report, on free speech and inclusion, and on hot topics, our Making Sense of ... guides.

Finally, we always encourage you to work with us. Help us help you get better data by reaching out. Email IDHE@Tufts.edu for more information. And as always, watch your inbox for our periodic newsletter, IDHE Update, for announcements about upcoming releases and new resources.

Congratulations on engaging your students in the 2020 election. Remember, student political learning is a year-round objective. Elections may be episodic, but student political engagement should not be.

All the Best,
IDHE Team



(Top Row from left) Duy Trinh, Program Administrator; Adam Gismondi, Director of Impact; Dave Brinker, Senior Researcher;
(Bottom Row from left) Nancy Thomas, Director; Norma López, Postdoctoral Scholar; Prabhat Gautam, Data Manager.

We also want to acknowledge and thank **Syed Golam Mohaimen, M.S. student in Data Science at Tufts University** for his contributions toward the creation of these reports.

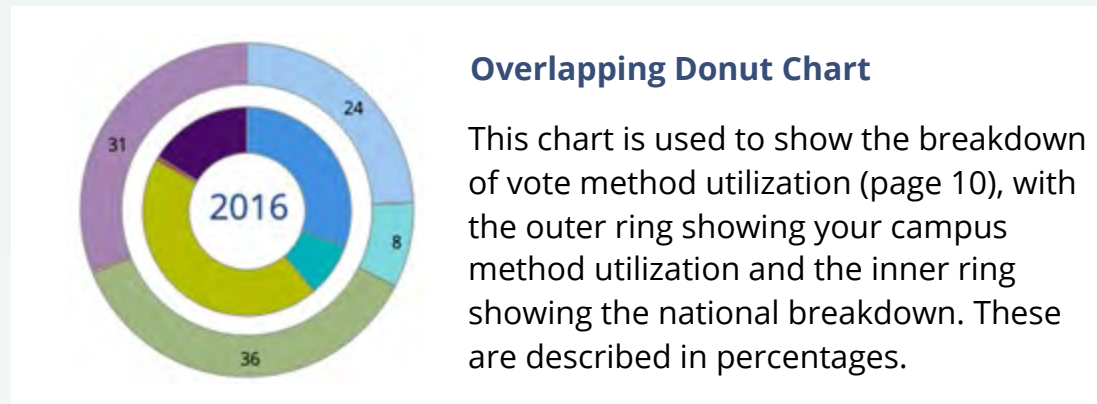
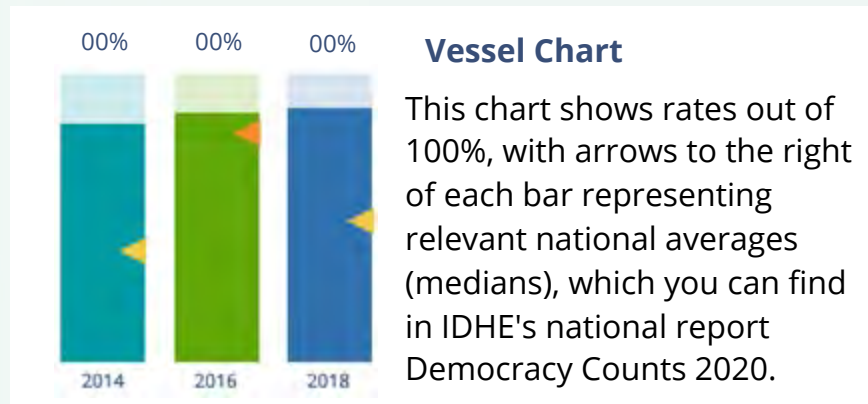
In This Report

This report presents data on student voter participation rates for your campus. The topline counts on page 5 tells you how many students voted, but we encourage you to look carefully at the data on subsequent pages to learn who voted. Data are presented in the form of vessel charts, overlapping donut charts, and tables.

	2014			2018			2014-2018
	Enrolled	Voted	Rate (%)	Enrolled	Voted	Rate (%)	Change (p.p.)
Asian	-	-	-	-	-	-	-
American Indian/ Alaska Native	-	-	-	-	-	-	-
Black	-	-	-	-	-	-	-
Hispanic	-	-	-	-	-	-	-

Tables

The tables show, on the left-side columns, the numbers of students and the rates from 2016, 2018, and 2020. On the left-side, percentage point (p.p.) changes between 2016 and 2020. A red down arrow indicates a decrease, a green up arrow indicates an increase, and a yellow arrow pointing to the right indicates no change. "-" in these tables indicates that the data is unavailable/missing, or is available for 10 or less students.



Voting, Registration and Yield Rates

YOUR INSTITUTION

72.1%
2020 Voting Rate

+14.2
Change From 2016

ALL INSTITUTIONS

66%
2020 Voting Rate

REGISTRATION RATE

Year	Registration Rate
2016	80.7%
2018	80.0%
2020	86.0%

The **Registration Rate** is the percent of your voting-eligible students who registered to vote.

VOTING RATE OF REGISTERED STUDENTS

Year	Voting Rate of Registered Students
2016	71.8%
2018	59.7%
2020	83.9%

The **Voting Rate of Registered Students** is the percent of registered students who voted on Election Day. We often refer to this as the “yield” rate.

VOTING RATE

Year	Voting Rate
2016	57.9%
2018	47.8%
2020	72.1%

The **Voting Rate** is the percentage of eligible students who voted on Election Day. The voting rate is also the product of the registration and yield rates.

Looking Closer

Voting and Registration Rates

	2016	2018	2020	2016-2020 Change (p.p.)
Total Student Enrollment	20,846	20,978	20,225	↓ -621
(Age under 18/Unknown)	-	-	-	-
(IPEDS estimated non-resident aliens)	603	591	449	↓ -154
(FERPA records blocked)	1,008	810	823	↓ -185
(Non-Degree Seeking Students)	14	14	11	↓ -3
Total eligible voters	19,212	19,553	18,934	↓ -278
Number of students who registered	15,495	15,638	16,281	↑ 786
Number of students who voted	11,133	9,339	13,658	↑ 2,525
Registration Rate %	81	80	86	↑ 5
Voting Rate of Registered Students %	72	60	84	↑ 12
Voting Rate %	58	48	72	↑ 14

This page provides the numbers we used to calculate your voting, registration, and yield rates. The sub-categories under total student enrollment are the adjustments that we make to account for students who are ineligible to vote due to age or citizenship status. We also exclude, when correctly flagged, students who are not pursuing degrees.

We use IPEDS-derived estimates of NRAs when institutions do not submit non-resident alien status data to NSC, or we cannot verify the accuracy of the reported counts. This estimate is given by "IPEDS estimated non-resident aliens" on this page. If you believe the number of international students reported on this report is incorrect, you can manually adjust your institution's voting rates by using our recalculation tool. <https://id-he.tufts.edu/nslve/nslve-recalculation-tool>.

By Institution Types

2016 Voting Rate for All Institutions

53%

**HIGH
82%**

**LOW
13%**

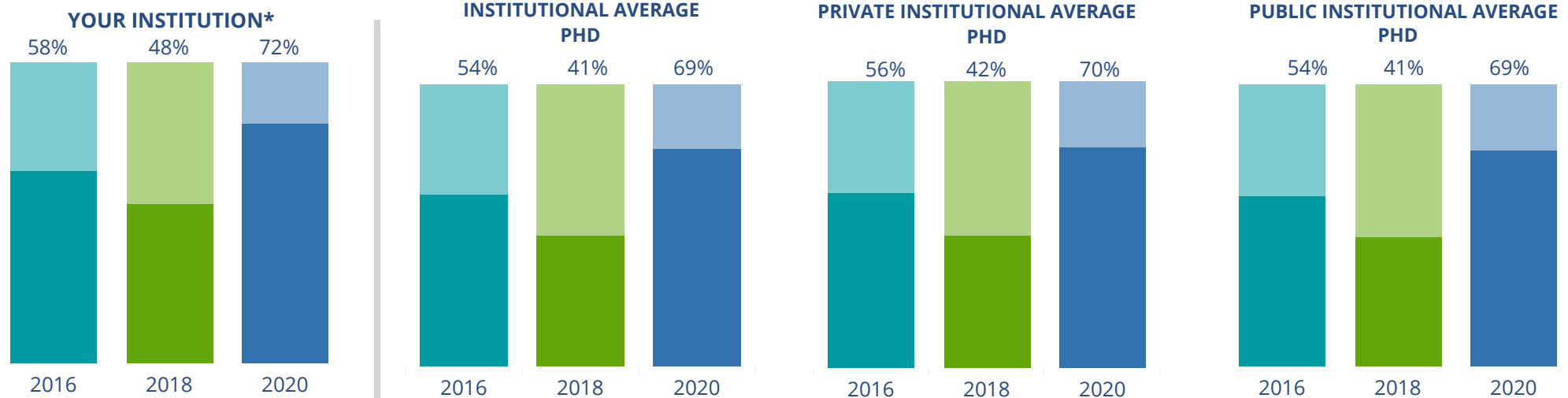
2020 Voting Rate for All Institutions

66%

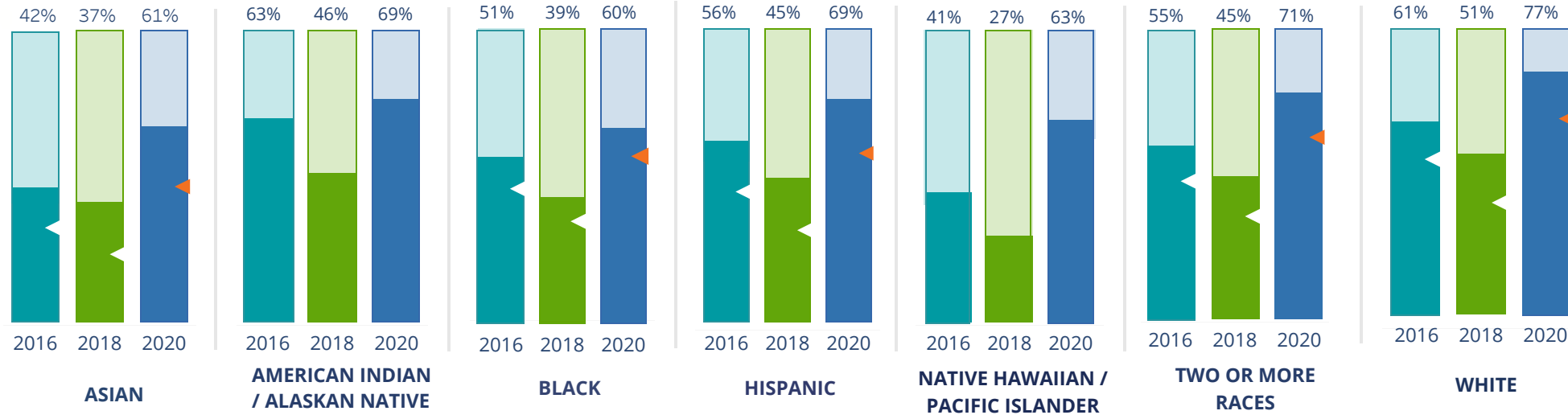
**HIGH
89%**

**LOW
19%**

These are estimated voting rates of your institution compared to the average voting rates of similar institutions in NSLVE. *"Your Institution" chart is presented at a different scale.



By Race / Ethnicity



These are estimated voting rates for race / ethnicity groups. These classifications are provided by campuses and are obtained following race reporting procedures* defined by the National Center for Education Statistics of the Institute of Education Sciences (IES). Please see our FAQ for more detail on why we cannot report national benchmark for some of the demographic groups:

<https://tufts.app.box.com/v/idhe-nslve-report-faq>

If you notice unavailable/missing data in this page, it could mean any of the following for your institution: (i) does not report this data; (ii) did not provide this data in past years; (iii) does not separately submit data for one or more of the demographic groups, or (iv) the data is reported for 10 or fewer students.

* <https://nces.ed.gov/ipeds/report-your-data/race-ethnicity-collecting-data-for-reporting-purposes>

Looking Closer

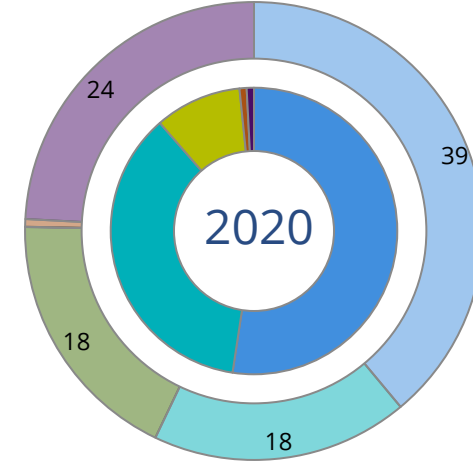
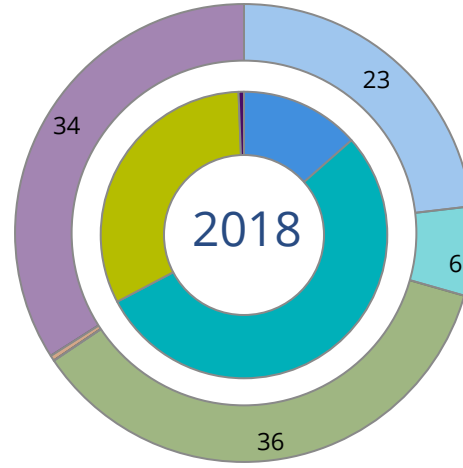
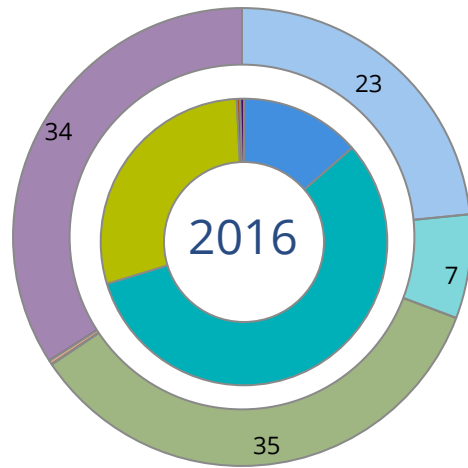
By Race/Ethnicity

This page provides the numbers we used to calculate race / ethnicity group voting rates. We include the counts of students and the change in rates between the two most recent comparable election years. If you notice unavailable/missing data in this page, it could mean any of the following for your institution: (i) does not report this data; (ii) did not provide this data in past years; (iii) does not separately submit data for one or more of the demographic groups, or (iv) the data is reported for 10 or fewer students.

	2016			2018			2020			2016-2020 Change (p.p)
	Enrolled	Voted	Rate	Enrolled	Voted	Rate	Enrolled	Voted	Rate	
Asian	1,321	552	42	1,562	584	37	1,558	943	61	↑ 19
American Indian/ Alaska Native	138	87	63	132	61	46	114	79	69	↑ 6
Black	620	318	51	649	253	39	624	374	60	↑ 9
Hispanic	3,676	2,048	56	3,989	1,786	45	4,132	2,841	69	↑ 13
Native Hawaiian/ Pacific Islander	115	47	41	103	28	27	79	50	63	↑ 22
2 or More Races	1,163	635	55	1,326	594	45	1,464	1,046	71	↑ 17
White	11,611	7,051	61	11,552	5,861	51	10,564	8,094	77	↑ 16
Race Unknown	1,165	395	34	825	172	21	844	231	27	↓ -7

By Voting Method

■ Not-In-Person
 ■ Early Vote
 ■ In-Person
 ■ Other
 ■ Provisional
 ■ Unknown



	2016		2018		2020		2016-2020	
	Voted	Rate	Voted	Rate	Voted	Rate	Change (p.p.)	
Early Vote	6,316	57	5,027	54	4,938	36	-21	↓
In-Person on Election Day	3,218	29	2,997	32	1,332	10	-19	↓
Not-In-Person	1,517	14	1,259	14	7,151	52	39	↑
Other	-	-	-	-	-	-	-	
Provisional	42	0	-	-	105	1	0	↑
Voting Method Unknown	39	0	56	1	132	1	0	↑

These are estimated rates for vote method utilization, the number of students utilizing each method, and the percent of students utilizing each method. Not all U.S. states provide information on vote method; voting method for voter files from these states are classified "Voting Method Unknown." For a list of these states, see our FAQ. <https://idhe.tufts.edu/nslve/nslve-faq#CampusReports>

By Age Group

	2016	2018	2020
18-21	52%	43%	72%
22-24	58%	47%	70%
25-29	61%	52%	65%
30-39	67%	58%	66%
40-49	75%	65%	74%
50+	80%	72%	78%

Voting is habit-forming and young voters will usually continue as voters in subsequent elections.

Also, young voters are more likely to be contacted by campaigns and are visible, and therefore significant, to elected officials. While in the past, we have seen voting rates increase across age groups, in recent cycles, the most significant increases have been among first-time and the youngest voters. Some colleges serve primarily young students, traditionally viewed as students in the 18-21 or 22-24 categories here. Others have much higher numbers of enrolled older undergraduate or graduate students.

Looking Closer

By Age Group

Here, we provide the numbers of students in each age category and the voting rates for each group. These are based on the student's age on the day of the election, as calculated by the National Student Clearinghouse using data from student enrollment records.

	2016			2018			2020			2016-2020 Change (p.p)
	Enrolled	Voted	Rate	Enrolled	Voted	Rate	Enrolled	Voted	Rate	
18-21	11,941	6,264	52	12,377	5,274	43	11,551	8,299	72	↑ 19
22-24	3,701	2,139	58	3,601	1,703	47	3,575	2,498	70	↑ 12
25-29	2,023	1,226	61	2,095	1,090	52	2,093	1,362	65	↑ 4
30-39	1,397	930	67	1,353	790	58	1,421	940	66	↓ 0
40-49	460	345	75	451	294	65	472	350	74	↓ -1
50+	287	229	80	261	188	72	267	209	78	↓ -2

Looking Closer

By Sex

	2016			2018			2020			2016-2020	
	Enrolled	Voted	Rate	Enrolled	Voted	Rate	Enrolled	Voted	Rate	Change (p.p)	
Female	10,355	6,173	60	10,790	5,392	50	10,637	7,774	73	↑	13
Male	9,193	4,784	52	9,346	3,947	42	8,741	5,884	67	↑	15

These are estimated voting rates for sex groups and the numbers we used to calculate their voting rates. These classifications are provided by campuses and are obtained following the reporting procedures defined by the National Center for Education Statistics (NCES) of the Institute of Education Sciences (IES). Presently, NCES requires institutions to report students as “Male” or “Female” only.*

If you notice missing data in this page, it could mean any of the following for your institution: (i) does not report this data; (ii) did not provide this data in past years; (iii) does not separately submit data for one or more of the demographic groups, or (iv) the data is reported for 10 or fewer students.

*<https://surveys.nces.ed.gov/ipeds/public/survey-materials/faq?faqid=11>

Looking Closer

By Education Level / Undergraduate Class Year

	2016			2018			2020			2016-2020
	Enrolled	Voted	Rate (%)	Enrolled	Voted	Rate (%)	Enrolled	Voted	Rate (%)	Change (p.p)
EDUCATION LEVEL										
Undergraduate	16,493	9,170	56	16,573	7,470	45	15,675	11,171	71	↑ 16
Graduate	2,469	1,553	63	2,845	1,558	55	3,167	2,111	67	↑ 4
Class Unknown	847	410	48	720	311	43	537	376	70	↑ 22
CLASS YEAR										
First Year	111	56	62	4,222	36	1,508	3,539	69	2,456	↑ 14
Second Year	164	60	98	3,425	42	1,436	3,123	70	2,190	↑ 10
Upper Level	398	64	256	8,975	50	4,443	8,833	72	6,397	↑ 8
ENROLLMENT STATUS										
Full-time	16,191	8,880	55	16,314	7,272	45	15,266	10,863	71	↑ 16
Part-time	3,618	2,253	62	3,824	2,067	54	4,113	2,795	68	↑ 6

These are estimated voting rates by Education Level (undergraduate/graduate), Class Year, and Enrollment Status (full-time/part-time), and the numbers we used to calculate these rates.

If you notice missing data in this page, it could mean any of the following for your institution: (i) does not report this data; (ii) did not provide this data in past years; (iii) does not separately submit data for one or more of the demographic groups, or (iv) the data is reported for 10 or fewer students.

By Field of Study

FIELDS	2016			2018			2020			2016-2020 RateChange (p.p)
	Enrolled	Voted	Rate	Enrolled	Voted	Rate	Enrolled	Voted	Rate	
Area, Ethnic, Cultural, and Gender Studies	18	16	89	15	11	73	18	13	72	↓ -17
Biological and Biomedical Sciences	1,938	1,074	55	1,931	933	48	1,791	1,251	70	↑ 14
Business, Management, and Marketing	2,867	1,488	52	3,065	1,217	40	2,845	1,980	70	↑ 18
Communication and Journalism	712	413	58	667	332	50	603	444	74	↑ 16
Computer and Information Sciences	250	146	58	223	104	47	214	156	73	↑ 14
Education	1,185	780	66	1,183	673	57	1,084	840	77	↑ 12
Engineering and Engineering Technologies	2,893	1,465	51	2,949	1,249	42	2,759	1,778	64	↑ 14

These are estimated voting rates by field of study, and the numbers we used to calculate the field of study rates. For an explanation of CIP codes, please see our FAQ.* There are roughly 8,000 fields of study among U.S. colleges and universities, so we provide rates for condensed categories.

*<https://tufts.app.box.com/v/idhe-nslve-report-faq>

By Field of Study

FIELDS	2016			2018			2020			2016-2020	
	Enrolled	Voted	Rate	Enrolled	Voted	Rate	Enrolled	Voted	Rate	Change (p.p)	
English Language and Literature	296	205	69	285	174	61	227	175	77	↑	8
Family and Consumer/Human Sciences	373	207	55	401	198	49	303	210	69	↑	14
Foreign Languages, Literatures, and Lingui..	102	81	79	87	55	63	65	49	75	↓	-4
Health Professions	3,168	1,719	54	3,321	1,385	42	3,197	2,280	71	↑	17
History	130	100	77	125	84	67	113	91	81	↑	4
Law Enforcement, Firefighting, and Protec..	-	-	-	-	-	-	-	-	-	-	-
Legal Professions and Studies	66	50	76	66	36	55	59	37	63	↓	-13
Liberal Arts and Sciences, and Humanities	578	303	52	531	215	40	493	351	71	↑	19
Mathematics and Statistics	183	102	56	181	97	54	212	141	67	↑	11
Multi/Interdisciplinary Studies	178	90	51	172	64	37	159	115	72	↑	22
Natural Resources and Conservation	373	245	66	365	211	58	388	300	77	↑	12
Philosophy and Religious Studies	47	26	55	58	28	48	44	30	68	↑	13
Physical Sciences	497	262	53	459	199	43	473	298	63	↑	10
Psychology	819	477	58	890	419	47	892	603	68	↑	9

By Field of Study

FIELDS	2016			2018			2020			2016-2020 Change (p.p)
	Enrolled	Voted	Rate	Enrolled	Voted	Rate	Enrolled	Voted	Rate	
Public Administration and Social Service Professions	435	322	74	594	381	64	729	544	75	↑ 1
Social Sciences	1,424	890	63	1,428	739	52	1,429	1,065	75	↑ 12
Visual and Performing Arts	379	240	63	374	208	56	433	317	73	↑ 10
Unknown	822	384	47	701	297	42	559	391	70	↑ 23

About This Report

Thank you for participating in the National Study of Learning, Voting, and Engagement.

Since NSLVE's launch in 2013, nearly 1,200 colleges and universities have signed up to receive their voting rates for the 2012, 2014, 2016, 2018, and 2020 federal elections.

Along with others, your institution's participation in this study has allowed us to build a robust database of over 50 million college student records, about 10 million for each election year, that serve as a foundation for innovative research on college student political learning and engagement in democracy.

NSLVE is a signature initiative of the Institute for Democracy and Higher Education (IDHE) at Tufts University's Jonathan M. Tisch College of Civic Life. The mission of IDHE is to shift college and university priorities and culture to advance political learning, agency, and equity. We achieve our mission through research, resource development, technical assistance, and advocacy.

About the Data

The voter registration and voting rates in this report reflect the percentage of your institution's students who were eligible to vote and who actually voted in the 2016, 2018, and 2020 elections.

These results are based on enrollment records your institution submitted to the National Student Clearinghouse (NSC) and publicly available voting files collected by L2 Political.

Enrollment lists are adjusted by deducting students under age 18 (at the time of the election), people identified as non-degree seeking and those identified by campuses as "nonresident aliens" (NRAs) (the federal government's category for mostly international students). Unfortunately, not all campuses report NRAs to NSC. For those campuses, we use IPEDS to calculate the number of NRA students on each campus and adjust NSC enrollment numbers to estimate the number of students to remove. We also quality check NRA removals by verifying that there is little to no discrepancy between the number of international students reported by the campus to IPEDS and to NSC. We cannot adjust subgroup analyses absent identification of NRAs verified by the process above. We welcome closer partnerships with individual colleges and universities to provide more accurate rates. For more on the data and the matching process, see our FAQ on Campus Reports.

University Of Nevada-Reno

Thank you for the work you do to improve your students' political learning and engagement. We hope that you find your NSLVE report useful. For up-to-date news on NSLVE data, resources, and to sign up for our newsletter visit: <https://idhe.tufts.edu>.

References: IDHE encourages report recipients to share this report as broadly as possible, including posting it on the college or university's website. When doing so, please use the following citation: Institute for Democracy & Higher Education: National Study of Learning, Voting and Engagement. (2021). 2016, 2018, and 2020 report for _____ [name of institution]. Medford, MA.



Barnum Hall
163 Packard Ave.
Medford, MA 02155

tischcollege@tufts.edu
617.627.3453



Institute for Democracy & Higher Education:
National Study of Learning, Voting, and Engagement
Barnum Hall, Medford, MA 02155

Follow Us on Twitter: @TuftsIDHE
NSLVE@tufts.edu
617.627.0620