

**University of Nevada, Reno**  
2024 Democratic Engagement Action Plan

**Contents**

**Executive Summary** ..... 3

**Leadership** ..... 3

    Institution Contacts: ..... 3

    Our Campus Partners: ..... 3

    Community Partners: ..... 4

    State Partners: ..... 5

    National Partners: ..... 5

**Commitment** ..... 5

**Landscape** ..... 8

    Data from the University of Nevada, Reno – Fall 2023: <https://www.unr.edu/ia> ..... 8

    Enrollment by Ethnicity: ..... 8

    Enrollment by Gender: ..... 8

    Average Age: ..... 8

**NSLVE Data** ..... 9

    Data from our NSLVE Report 2022: ..... 9

    Data from our NSLVE Report 2020: ..... 9

    NSLVE 2020 Report vs NSLVE 2018 Report: ..... 9

    NSLVE 2020 Report vs NSLVE 2016 Report: ..... 9

    Race: ..... 9

    Voting Method: ..... 9

    Gender: ..... 9

**Campus-Wide Civic Engagement Survey** ..... 9

    Methods: ..... 10

    Data Points from the 2022 Civic Engagement Survey: ..... 10

**Challenges** ..... 10

    Internal: ..... 11

    External: ..... 11

    Strengths: ..... 11

**Goals** ..... 12

**Reporting and Evaluation** ..... 12

    Internally by: ..... 12

Externally by: ..... 13  
We Want to Know: ..... 13  
Feedback Collected by: ..... 13  
**Strategy** ..... 13  
Short-Term Goals (1-2 Years) ..... 13  
Mid-Term Goals (3-5 Years) ..... 15

## Executive Summary

This action plan was developed in December 2023 by the Center for Student Engagement (CSE) at the University of Nevada, Reno (UNR) to communicate our strategy for increasing the registration, education, and turnout rates of voters at the 2024 election and fostering a stronger culture of democratic civic engagement across our campus. The planned activities outlined here will be conducted over the 2024 calendar year on and around our campus in Reno, Nevada. This plan will be implemented by the Center for Student Engagement in collaboration with the Associated Students of the University of Nevada (ASUN), various student organizations, campus departments, and community partners that form our campus democratic engagement coalition. This plan will be used as a guiding document, being revised on a regular basis, to ensure we achieve our articulated goals and further institutionalize civic learning and democratic engagement through a diversity, equity, and inclusion lens at the University of Nevada, Reno.

## Leadership

Meetings between the individuals and groups listed below will continue throughout the calendar year. These listed partners were selected for the following reasons:

- They are various leaders from different parts of campus, including students.
- They represent different perspectives and areas of expertise.
- They have access to voters, especially those who are underrepresented in our democracy.

### Institution Contacts:

- Director, Dr. Sandra Rodriguez, [srodz@unr.edu](mailto:srodz@unr.edu)
- Associate Director, Amy Koeckes | [amyk@unr.edu](mailto:amyk@unr.edu)
- Coordinator, Democratic Engagement and Special Events, Jessi Raymond | [jessicaraymond@unr.edu](mailto:jessicaraymond@unr.edu)

### Our Campus Partners:

- University Self Governance
  - [Associated Students of the University of Nevada](#) (ASUN): Students in these groups are appointed positions and change annually.
    - Student Body President, Boris Carpio Guerra | [president@asun.unr.edu](mailto:president@asun.unr.edu)
    - Student Body Vice President, Hannah Dayna Alquiza | [vicepresident@asun.unr.edu](mailto:vicepresident@asun.unr.edu)
    - Student Director of Government Affairs, Dawson Deal | [directorgovernmentaffairs@asun.unr.edu](mailto:directorgovernmentaffairs@asun.unr.edu)
    - Committee on Democratic Civic Engagement, Leaf Acklin | [seantoracklin@asun.unr.edu](mailto:seantoracklin@asun.unr.edu)
    - Individual Officers in ASUN: <https://nevadaasun.com/student-government/senate/>
  - Graduate Student Association: Students in these groups are appointed positions and change annually.
    - Student Body President, Matthew Hawn | [mhawn@unr.edu](mailto:mhawn@unr.edu)
  - Faculty Senate Chair, Dr. Peter Reed | [psreed@unr.edu](mailto:psreed@unr.edu)
  - Staff Employee Council Chair, Kayla Armbruster | [kaylab@unr.edu](mailto:kaylab@unr.edu)

- ASUN Political and Social Clubs
  - Young Dems | [ydnr1874@gmail.com](mailto:ydnr1874@gmail.com)
  - Not Active but will keep checking:
    - College Republicans | [unrcrs@gmail.com](mailto:unrcrs@gmail.com)
- Student Services Offices
  - [The Multicultural Center](#) | [thecenter@unr.edu](mailto:thecenter@unr.edu)
    - Assistant Director, Markie Wilder | [mwilder@unr.edu](mailto:mwilder@unr.edu)
  - [Residential Life, Housing and Food Services](#)
    - Director of Residential Life, and Inclusion, Andy Garate | [agarate@unr.edu](mailto:agarate@unr.edu)
  - [Joe Crowley Student Union](#)
    - Coordinator of Programming and Marketing, Lauren Perez | [laurenperez@unr.edu](mailto:laurenperez@unr.edu)
  - [First in the Pack- First Generation Center](#)
    - Associate Director, TRIO Programs, Heather Williams | [heatherw@unr.edu](mailto:heatherw@unr.edu)
  - [New Student Initiatives](#)
    - Assistant Director, Nikole Nichols | [nnichols@unr.edu](mailto:nnichols@unr.edu)
  - [Student Persistence Research](#)
    - Director, Dr. Jennifer Lowman | [jlowman@unr.edu](mailto:jlowman@unr.edu)
- University Administration
  - President's Office
  - Provost Office
  - Marketing & Communication
- Academic Departments
  - Service-Learning Office
  - Academic Deans
  - Academic Advisors
  - Political Science Department
  - Communication Studies Department
- Athletics
  - Student Athletic Association
  - Individual Athletes

#### Community Partners:

- [Washoe County Registrar of Voters](#): Dedicated staff that support voter registration in the county.
  - Assistant Registrar, Jamie Rodriguez | [JARodriguez@supports.gov](mailto:JARodriguez@supports.gov)
  - Deputy Registrar of Voters, Cari-Ann Burgess | [cburgess@washoecounty.gov](mailto:cburgess@washoecounty.gov)
  - Election Specialist, Addison Vetter | [amvetter@washoecounty.gov](mailto:amvetter@washoecounty.gov)
- [Washoe County School District](#): Volunteer Services and High School Staff for facilitating aspects of voter registration to 17-year-olds.
  - WCSD Social Studies Coordinator, Sarah Brown | [SABrown@washoeschools.net](mailto:SABrown@washoeschools.net)
  - Various High School teachers in the area
- Nevada System of Higher Education (NSHE) Student Affairs Administrators

- Faculty and Staff at other NSHE Institutions revolving around democratic engagement.
  - GBC Director of Student Life, Dr. Christopher Salute | [christopher.salute@gbcnv.edu](mailto:christopher.salute@gbcnv.edu)
  - UNLV Director for Service Learning and Leadership, Rian Satterwhite | [rian.satterwhite@unlv.edu](mailto:rian.satterwhite@unlv.edu)
  - NSC Deputy Coordinator of Student Life, Meaghan Lynch | [Meaghan.Lynch@nsc.edu](mailto:Meaghan.Lynch@nsc.edu)
  - TMCC Coordinator, Student Engagement and Leadership, Becca Franssen | [bfranssen@tmcc.edu](mailto:bfranssen@tmcc.edu)
  - WNC Student Life Coordinator and Assistant to the Vice President, Heather Rikalo | [heather.rikalo@wnc.edu](mailto:heather.rikalo@wnc.edu)
  - College of Southern Nevada- Vacant
- Various Apartment Complexes within (2) miles of campus

#### State Partners:

- Nevada Secretary of State Office
  - Francisco V. Aguilar, Secretary of State
  - Mark Wlaschin, Deputy Secretary of State for Elections | [sosmail@sos.nv.gov](mailto:sosmail@sos.nv.gov)

#### National Partners:

- ALL IN-Campus Democracy Challenge
  - Managing Director, Cat Fish | [cat@civiction.org](mailto:cat@civiction.org)
  - Associate Director, Ryan Drysdale | [ryan@civiction.org](mailto:ryan@civiction.org)
  - Stephanie King, Senior Director, Strategic Initiatives [Stephanie@civiction.org](mailto:Stephanie@civiction.org)
- Students Learn Students Vote
  - Bianca Rosales, Associate Director of Partnerships, [bianca@slsvcoalition.org](mailto:bianca@slsvcoalition.org)
- Campus Vote Project: Voter Friendly Campus
  - Midwest Regional Manager, Chuck Black | [cblack@campusvoteproject.org](mailto:cblack@campusvoteproject.org)
  - National Director, Mike Burns | [mburns@campusvoteproject.org](mailto:mburns@campusvoteproject.org)
- NASPA
  - Jill Dunlap | [jdunlap@naspa.org](mailto:jdunlap@naspa.org)
  - NASPA Civic Learning and Democratic Knowledge Community
    - Co-Chair, Andrew Brown | [andrew.brown@unl.edu](mailto:andrew.brown@unl.edu)
    - Co-Chair, Christopher Miofsky | [christopher.miofsky@du.edu](mailto:christopher.miofsky@du.edu)

## **Commitment**

The University of Nevada, Reno promotes the education of students for engaged citizenship through democratic participation in their communities, demonstrating respect and appreciation of diversity, utilization of applied learning, and active social responsibility. Through the university mission and values, we accomplish civic learning and democratic engagement.

Our [campus mission statement](#) reads “Inspired by its land-grant foundation, the University of Nevada, Reno provides outstanding learning, discovery, and engagement programs that serve the

economic, social, environmental and cultural needs of the citizens of Nevada, the nation, and the world. The University recognizes and embraces the critical importance of diversity in preparing students for global citizenship and is committed to a culture of excellence, inclusion, and accessibility.”

Our [campus values](#) guide us in “excellence in all our endeavors, integrity in all our actions, inclusiveness of diverse cultures and identities, and collaboration between discipline and programs and with community partners and stakeholders.”

Our [campus strategic plan](#) states a commitment to six main goals. Of these six, four work with the commitment on increasing democratic engagement within the University of Nevada, Reno:

- **Strengthen the Pack:** “Enable inclusive excellence”
- **Invest in Our Future:** “Deliver the services, organization and infrastructure required to support a growing University”
- **Transform the World:** “Elevate our top-tier research and contributions”
- **Expand the Wolf Pack Impact:** “Reinforce our impact to Nevada and beyond”

The University of Nevada, Reno was selected as one of 114 institutions for the [Carnegie Community Engagement Classification](#) by the Carnegie Foundation for the Advancement of Teaching. This honor shows the dedication the University has to community engagement and addressing critical societal issues.

Furthermore, the Center for Student Engagement is committed to the advancement of the strategic plans from the Associated Students of the University of Nevada and the Division of Student Services. The [ASUN Strategic Plan](#) communicates a vision for student life that includes a democratically engaged student body, where students are activists - organizing around issues that affect them. The Division of Student Services’ mission and core values “strive for an inclusive community that embraces all its members, provides equality of opportunity for all and actively encourages all voices to be heard.” As a division, we accomplish this as part of the University’s learning mission through activities that:

- Co-create with diverse students a thriving campus community which integrates the curricular, co-curricular and virtual experiences
- Add value to every student’s experience as they pursue their educational and personal goals
- Value each student and what they bring to our campus
- Provide opportunities for students to become more conscientious and visionary leaders of a sustainable global community
- Strive to promote an equitable and inclusive learning environment for all
- Optimize mental and physical health as a foundation for success
- Help students to develop relationships to increase a sense of belonging
- Share data to bolster impact across campus
- Promote opportunities for student development, growth, and success

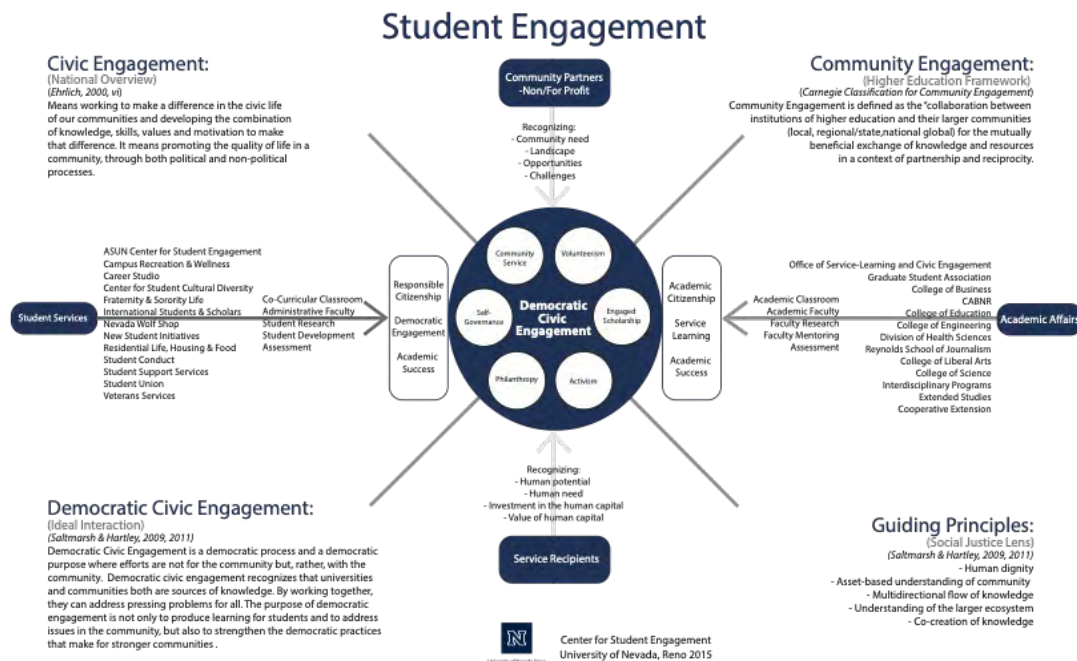
The work of Student Services focuses on the recruitment, retention, and graduation of an increasing number of students through a variety of services, programs and partnerships that contribute to student engagement, development and learning which leads to student success.

In the belief that the most important learning derives from the personal encounter and joint work of professional staff and students, Student Services provides a quality learning environment, encourages open inquiry, values the lifelong pursuit of knowledge, and provides collaborative services and programs.

All staff within Student Services must continue to strive for an inclusive community that embraces all its members, provides equality of opportunity for all, and actively encourages all voices to be heard. Everyone must be welcomed and treated with dignity and respect, and every person's story must be honored. In doing so, the goal is to develop a diverse campus climate and promote a safe and hospitable environment that extends beyond a statement of good intentions and uplifting principles.

In fulfilling our responsibility to help graduates succeed in a diverse global environment, in 2021 members from Student Services created a diversity, equity, and inclusion strategic plan where goals and objectives were provided for the division. Each department within Student Services created its own [DEI plans](#). The Center for Student Engagement created a [DEI plan](#) with goals for the 2023-24 school year.

In 2015 the Center for Student Engagement created a model for our civic engagement work.



We can point to the above institutional commitments to support our work. However, to foster a strong culture of social justice on our campus, we have added an increased emphasis on the bridging principles of Diversity, Equity and Inclusion, and Civic Learning and Democratic Engagement in our department as seen in our updated our mission, mission, and values for the Center for Student Engagement.

Mission: The Center for Student Engagement cultivates student success by providing an equitable and inclusive environment of nationally recognized educational programs and services. We develop courageous and civically engaged students who use their voices to be global leaders. We challenge systems that prevent student's full participation in university life.

Vision: We develop future leaders who will create an equitable and inclusive world.

Values: Equity and Inclusion, Learning, Service, Leadership, Community

In the 2023-24 academic year, the Center for Student Engagement is developing a strategic plan to guide our work for the next three to five years. With this new plan and the updated mission, vision, and values, we will be working on the civic education of our students and staff.

## Landscape

Data from the University of Nevada, Reno – Fall 2023: <https://www.unr.edu/ia>

- Total Student Enrollment: 21,778
- Undergraduates: 17,965
- Graduates: 3,476
- Medical School Students: 337

### Enrollment by Ethnicity:

- White: 10,737
- Hispanic: 5,179
- Black/African American: 775
- Asian: 1,801
- Native American or Alaskan Native: 141
- Pacific Islander: 88
- Multiple Ethnicities: 1,857
- Non-Resident Alien: 690
- Unknown: 511

### Enrollment by Gender:

- Male: 9,865
- Female: 11,866
- Unknown: 37
- Intersex: 2
- X Intersex: 2

### Average Age:

- Undergraduates: 21 years old
- Graduates: 32 years old
- Medical School Students: 27 years old



## **NSLVE Data**

### Data from our NSLVE Report 2022:

- Data is currently not available from this year

### Data from our NSLVE Report 2020:

- Registration rate: 86%
- Voting rate of registered students: 83.9%
- Voting rate: 72.1%
- All Institutions in the study: 66%

### NSLVE 2020 Report vs NSLVE 2018 Report:

- Registration Rate: Is Up by 6%
- Voting rate of registered students: Is Up by 24.2%
- Voting Rate: Is Up by 24.3%

### NSLVE 2020 Report vs NSLVE 2016 Report:

- Registration Rate: Is Up by 5.3%
- Voting rate of registered students: Is Up by 12.1%
- Voting Rate: Is Up by 14.2%

### Race:

We must continue to work to get students of color registered and voting. We will work closely with our Student Services departments (Multicultural Center, First-Gen, Res Life) to educate students of color and reach out to identity-based clubs.

### Voting Method:

Nevada's adopted a new state law in 2020 that sends all eligible voters in the state a ballot by mail. We must continue to educate students on their voting options that include voting by mail and in person options. We will work to have early voting and election day voting on our campus for 2024.

### Gender:

As in most of the surveys, and in our NSLVE 2020 report, there are more females voting at a higher rate than males. We will work on targeted efforts to increase the number of males voting by presenting at clubs, fraternities, and various athletic teams.

## **Campus-Wide Civic Engagement Survey**

Civic engagement behaviors for the University of Nevada, Reno are estimated from the Civic Engagement (CE) survey results for undergraduates enrolled in degree-seeking programs. The CE survey is a campus-wide electronic survey conducted every two years at the end of the spring semester. It has been conducted four times, once every two years: 2016, 2018, 2020, and 2022. We will launch another survey in Spring 2024 and will have the data the following summer.

## Methods:

In April 2022, email invitations to take the 2022 CE survey were sent to University of Nevada, Reno degree-seeking students who make their information publicly available. These students received bi-weekly recruitment emails until the survey closed May 16, 2022. Students who completed the survey were entered into a drawing to win prizes.

Major sections of the survey:

- Civic Engagement Behaviors
  - Volunteering and Community Service
  - Engaged Scholarship
  - Activism
  - Philanthropy
  - Policy and Governance
- Voting
- Civil Discussions: Informal and Formal
- Food Insecurity, Housing Insecurity, & Financial Distress

## Data Points from the 2022 Civic Engagement Survey:

- Voting Behaviors
  - The proportion of registered students stayed roughly the same in 2022, increasing 2% for undergraduates but decreasing 2% for graduate students
  - Voting registration remains higher in Nevada than the national average for college students
  - 60% of undergraduates and graduate students intend to vote in the mid-term election in 2022
    - Undergraduates plan to vote via early voting and graduate students plan to vote at the polls
- Barriers to Voting
  - Not knowing enough about the issues continues to be the biggest barrier to voting in 2022 as it has been across survey waves
- Civil Discussions
  - 22% of undergraduates and 27% of graduate students expressed interest in Wolf Pack Howls
  - The topic of most interest overall was mental health; after mental health, topics of interest varied only slightly by political affiliation
    - Republicans were interested in discussing free speech
    - Other political affiliations were interested in climate change and abortion
- Items to Address from 2020 Civic Engagement Survey:
  - Coordinating workshops/webinars to address educational gaps
    - Knowledge on issues
    - Knowledge on candidates
    - Knowledge on where to vote and how to vote

## **Challenges**

### Internal:

- Limited budget to execute CLDE work.
- Limited capacity of administrative faculty.
- Shifting the intuitional culture to place a high value on CLDE.
- Forming a democratic engagement coalition that includes students, faculty, and community partners.
- Strategically cultivate formal relationships between the Center for Student Engagement and various academic departments and faculty to build on civic learning and democratic engagement initiatives.
- High competition for booking space for events and competing with other events for attendance.
- Our student body has experienced heightened political tension related to free speech.

### External:

- Washoe County Registrar of Voters available of funds for polling locations on campus. In 2022, our campus had an on-campus day of voting location, but we are unclear if this will continue due to funding.
- Further extremism in party positions.
- Divisiveness of national media outlets.
- Lack of formal and social knowledge about political systems.
- Inability to identify trustworthy sources of information in the age of fake news.
- Belief in the myth that even if you vote, it does not matter.

### Strengths:

- On campus location for early voting and Election Day for elections.
- Strong web resources for [freedom of expression](#).
- A streamlined process for social and political clubs to be formed.
- Dedicated staff in the CSE to institutionalize CLDE work on our campus.
- Support for the Deliberative Dialogue program.
- Marketing department support with creating materials.
- Data and assessment tools to measure CLDE growth on our campus with a campus wide survey done every two years.
- Signature events that form the basis of ongoing education and engagement with the student body.
- Connection to local high schools to start the voter registration process early.
- Student government committee focused on CLDE work called the Democratic Civic Engagement Committee
- Student government executive branch, Government Affairs focused on CLDE work.
- A lens of Equity, Diversity, and Inclusion is applied to our civic engagement work.
- Increased access to the student government on campus by hosting workshops that encouraged all students to run for public office.
- Connected with nationwide initiatives such as NASPA CLDE KC, Voter Friendly Campus, All in Campus, Student Learn Student Vote Coalition, Campus Vote Project, NSLV and Civic Holidays.

## Goals

These goals are: Specific, Measurable, Achievable, Relevant, Time-bound

- Voter Registration and Voter Turn Out Rates:
  - Increase our overall voter turnout rate to 60% by 2024 general election. This would be a 4.1% increase from our 2016 general election NSLV data.
    - \*Will update with 2022 midterm general election NSLV data once received.

These tactics are meant to support the above measurable goals:

- Relaunch the Democratic Engagement Coalition with membership from various departments and student groups across campus:
- Develop consistent branding for any voting-related marketing and visual materials
- Update the voting website and Canvas Course classroom
- Host a county-wide Voter Registration Day
- Launch a “Know Your Rights” Campaign
- Host Wolf Pack Community Howls with increased attendance
- Create Voter Guides with Voter Education
- Host Secretary of State on campus
- Viewing of Debates
- Host candidates on campus
- Review the data from the Civic Engagement Survey and address barriers to voting
- Recruit Election Poll workers
- Host Post Election event
- Marketing messages to students and faculty on campus.
  - Text Message
  - Paid Advertising
  - Emails
    - Newsletters
    - TV ads on campus
    - Printed posters
    - Printed handbills
    - Stickers
    - Social Media
- University media and local media on stories about voting
  - Strive to get four articles/stories published within the community

## Reporting and Evaluation

We will share this plan...

Internally by:

- Presenting the plan to:
  - Student Governments
  - Faculty Senate

- Staff employee council
- Student Services Departments
- Democratic Coalition
- Review the data collected from our Spring 2024 on campus Civic Engagement survey and address barriers to voting that were reported by students.

Externally by:

- Presenting the plan to community partners who have a key role or interest in the voter engagement of our student body.

We Want to Know:

- What are the known barriers to entry for civic and democratic engagement?
- How do we go about identifying barriers to civic and democratic engagement that are unknown?
- What role does civic and democratic engagement have in student persistence?

Feedback Collected by:

- Creating assessments for individual events.
- Work with the Office of Student Persistence Research to conduct longitudinal studies on levels of student civic and democratic engagement.
- Our Civic Engagement Survey

**Strategy**

Short-Term Goals (1-2 Years)

2024	2025
January <ul style="list-style-type: none"> <li>- Decode the Ballot flyers</li> <li>- Washoe County HS registrations</li> <li>- FAQs document on voter ballots</li> <li>- ASUN Elections Open (undergrads)</li> <li>- Marketing out with dates for voting 2024</li> </ul>	January <ul style="list-style-type: none"> <li>- Inauguration Day watch party</li> <li>- Welcome Back Week Club Fair tabling</li> <li>- Monthly Democratic Coalition Meeting</li> <li>- ASUN Elections Open (undergrads)</li> </ul>
February <ul style="list-style-type: none"> <li>- Res Life collaboration for day-of</li> <li>- Washoe County HS registrations</li> <li>- ASUN Elections Close (undergrads)</li> <li>- Diversity Club Fair tabling</li> </ul>	February <ul style="list-style-type: none"> <li>- Training with Voter Registration office</li> <li>- ASUN Elections Close (undergrads)</li> <li>- Monthly Democratic Coalition Meeting</li> <li>- “What is Democratic Engagement” session</li> </ul>
March	March <ul style="list-style-type: none"> <li>- ASUN Elections Voting</li> <li>- Monthly Democratic Coalition Meeting</li> </ul>

<ul style="list-style-type: none"> <li>- Absentee Webinar</li> <li>- Out-of-State and county webinar</li> <li>- Washoe County HS registrations</li> <li>- ASUN Elections Voting</li> <li>- Collaboration with Fraternities on voting information session</li> </ul>	<ul style="list-style-type: none"> <li>- “Do You Know Your Rights?” session</li> </ul>
<p>April</p> <ul style="list-style-type: none"> <li>- June Primary Info webinar</li> <li>- Monthly Democratic Coalition Meeting</li> <li>- Common Voting Errors webinar</li> </ul>	<p>April</p> <ul style="list-style-type: none"> <li>- ASUN Government Changes</li> <li>- Monthly Democratic Coalition Meeting</li> <li>- “How Does Your Voice Count?” session</li> </ul>
<p>May</p> <ul style="list-style-type: none"> <li>- Monthly Democratic Coalition Meeting</li> <li>- Voting Requirements webinar</li> <li>- Monthly Democratic Coalition Meeting</li> <li>- Promotion of Primary Elections</li> <li>- CDLE Celebration</li> </ul>	<p>May</p> <ul style="list-style-type: none"> <li>- Monthly Democratic Coalition Meeting</li> <li>- CDLE Celebration</li> </ul>
<p>June</p> <ul style="list-style-type: none"> <li>- Collaboration with Athletics on voting education</li> <li>- Collaboration with Orientation</li> </ul>	<p>June</p> <ul style="list-style-type: none"> <li>- Monthly Democratic Coalition Meeting</li> <li>- Collaboration with Orientation</li> </ul>
<p>July</p> <ul style="list-style-type: none"> <li>- Res Life collaboration for day-of</li> <li>- Monthly Democratic Coalition Meeting</li> </ul>	<p>July</p> <ul style="list-style-type: none"> <li>- Monthly Democratic Coalition Meeting</li> </ul>
<p>August</p> <ul style="list-style-type: none"> <li>- NevadaFit Tabling</li> <li>- Out-of-State and county webinar</li> <li>- Res Life RA training &amp; documents</li> <li>- Welcome Week Club Fair tabling</li> <li>- Washoe County HS Voter registration</li> <li>- Monthly Democratic Coalition Meeting</li> <li>- Washoe County HS registrations</li> </ul>	<p>August</p> <ul style="list-style-type: none"> <li>- NevadaFit Tabling</li> <li>- Welcome Week Club Fair tabling</li> <li>- Monthly Democratic Coalition Meeting</li> </ul>
<p>September</p> <ul style="list-style-type: none"> <li>- Political Science Panel on ballots</li> </ul>	<p>September</p> <ul style="list-style-type: none"> <li>- Voter Registration Week</li> <li>- Monthly Democratic Coalition Meeting</li> </ul>
	<p>October</p> <ul style="list-style-type: none"> <li>- Elect All the People Workshop</li> <li>- Voter Education Week</li> <li>- Monthly Democratic Coalition Meeting</li> <li>- Renew Field Registrar certification</li> </ul>
	<p>November</p> <ul style="list-style-type: none"> <li>- Monthly Democratic Coalition Meeting</li> </ul>
	<p>December</p> <ul style="list-style-type: none"> <li>- Monthly Democratic Coalition Meeting</li> </ul>

- Debate Watch Party
- Student Election Poll Recruitment
- Voter Registration Week
- Monthly Democratic Coalition Meeting
- Celebrate National Voter Registration Day
- Work with Res Life on a campaign on using on campus address.
- “Who Are the Candidates?” session
- Maps for drop-off locations

October

- Elect All the People Workshop
- Debate Watch Party
- Absentee Webinar
- Promotion on ways to vote in Nevada
- Early Voting Location
- Celebrate Vote Early Day
- Voter Education Week
- Monthly Democratic Coalition Meeting
- Maps for Early Voting locations
- Renew Field Registrar certification

November

- Election Results Watch Party
- Day-of-Vote Location (with photo prop area)
- Post Election programming that includes forum, yoga and tips to decompress.
- Monthly Democratic Coalition Meeting
- Maps for Day-Of locations

December

- Monthly Democratic Coalition Meeting

Mid-Term Goals (3-5 Years)

- Get mailboxes inside the Residence Halls
- Increase webinar videos available with a variety of voter education
- Develop long-standing events with various clubs on campus
- Reviewal of programs/events and update as necessary
- Keep the democratic engagement coalition meeting in non-election years
- Work with Orientation to get every student registered in the summer

- Work with the state to see how it can expand same-day voter registration to students with out-of-state IDs
- Work with the local registration office to get more students to become poll workers
  - Look at ways to split coverage
- Find new ways to celebrate civic pride on campus, including highlighting student stories
- Continue to find ways to engage with the Wolf Pack Community post-election with visits to the state legislative and bringing elected officials to campus
- Continue to find ways to make it more convenient with in-person early voting and election day voting on campus