



October 2021

Student Voting Rates for The University of Montana

2020 NSLVE Campus Report

October 2021

Dear Colleagues:

We are pleased to send this tailored report containing your students' voting rates for 2020. This report contains three years of relevant topline data: 2016, 2018, and 2020. As always, we disaggregate the data so you can better identify and address gaps in participation.

College and university students participated in record-breaking numbers in the 2020 election. In 2016, the Average Institutional Voting Rate was 53%. This year, it jumped to 66%. We encourage you to review Democracy Counts 2020, our most recent national report.

As in past years, we urge you to share this report widely and strategically, particularly with faculty who, in 2020, were often the most consistent communicators with students about ever-changing voting conditions and deadlines. We also urge you to review our recommendations for engaging elections to cultivate a robust and healthy campus climate for political engagement, discourse, equity, and participation: Election Imperatives (2019) and the more recent Election Imperatives: A Time of Physical Distancing and Social Action. Since "pervasive political discussions" and attentiveness to the campus culture around speech and academic freedom are among our top recommendations, we direct you to our discussion guides on talking about your NSLVE report, on free speech and inclusion, and on hot topics, our Making Sense of ... guides.

Finally, we always encourage you to work with us. Help us help you get better data by reaching out. Email IDHE@Tufts.edu for more information. And as always, watch your inbox for our periodic newsletter, IDHE Update, for announcements about upcoming releases and new resources.

Congratulations on engaging your students in the 2020 election. Remember, student political learning is a year-round objective. Elections may be episodic, but student political engagement should not be.

All the Best,
IDHE Team

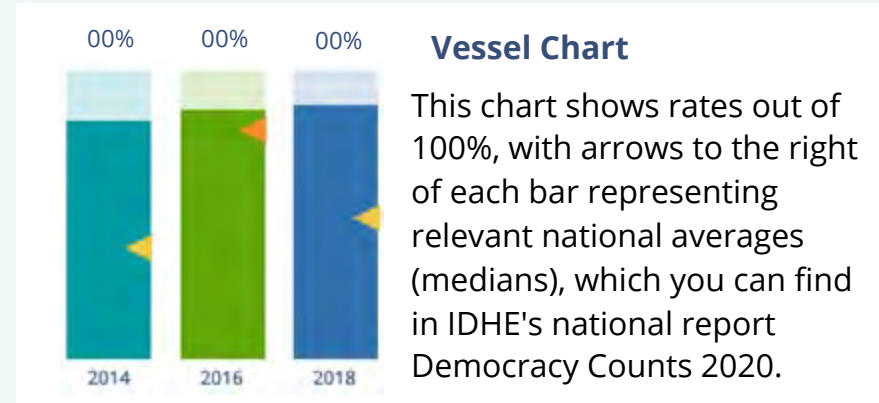


(Top Row from left) Duy Trinh, Program Administrator; Adam Gismondi, Director of Impact; Dave Brinker, Senior Researcher;
(Bottom Row from left) Nancy Thomas, Director; Norma López, Postdoctoral Scholar; Prabhat Gautam, Data Manager.

We also want to acknowledge and thank **Syed Golam Mohaimen, M.S. student in Data Science at Tufts University** for his contributions toward the creation of these reports.

In This Report

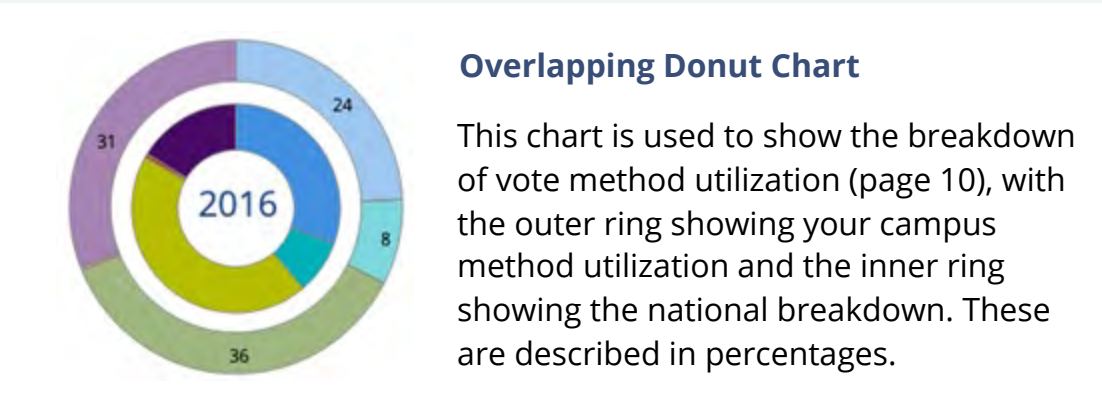
This report presents data on student voter participation rates for your campus. The topline counts on page 5 tells you how many students voted, but we encourage you to look carefully at the data on subsequent pages to learn who voted. Data are presented in the form of vessel charts, overlapping donut charts, and tables.



	2014			2018			2014-2018 Change (p.p.)
	Enrolled	Voted	Rate (%)	Enrolled	Voted	Rate (%)	
Asian	-	-	-	-	-	-	-
American Indian/ Alaska Native	-	-	-	-	-	-	-
Black	-	-	-	-	-	-	-
Hispanic	-	-	-	-	-	-	-

Tables

The tables show, on the left-side columns, the numbers of students and the rates from 2016, 2018, and 2020. On the left-side, percentage point (p.p.) changes between 2016 and 2020. A red down arrow indicates a decrease, a green up arrow indicates an increase, and a yellow arrow pointing to the right indicates no change. "-" in these tables indicates that the data is unavailable/missing, or is available for 10 or less students.



Voting, Registration and Yield Rates

YOUR INSTITUTION

70.3%

2020 Voting Rate

+9.4

Change From 2016

ALL INSTITUTIONS

66%

2020 Voting Rate

REGISTRATION RATE

Year	Rate
2016	78.4%
2018	79.9%
2020	80.4%

The **Registration Rate** is the percent of your voting-eligible students who registered to vote.

VOTING RATE OF REGISTERED STUDENTS

Year	Rate
2016	77.6%
2018	71.5%
2020	87.4%

The **Voting Rate of Registered Students** is the percent of registered students who voted on Election Day. We often refer to this as the “yield” rate.

VOTING RATE

Year	Rate
2016	60.9%
2018	57.1%
2020	70.3%

The **Voting Rate** is the percentage of eligible students who voted on Election Day. The voting rate is also the product of the registration and yield rates.

Looking Closer

Voting and Registration Rates

	2016	2018	2020	2016-2020 Change (p.p.)
Total Student Enrollment	11,878	10,678	9,567	↓ -2,311
(Age under 18/Unknown)	–	–	–	–
(IPEDS estimated non-resident aliens)	393	370	218	↓ -175
(FERPA records blocked)	127	78	48	↓ -79
(Non-Degree Seeking Students)	146	432	–	–
Total eligible voters	11,212	9,798	9,302	↓ -1,911
Number of students who registered	8,793	7,831	7,479	↓ -1,314
Number of students who voted	6,825	5,596	6,540	↓ -285
Registration Rate %	78	80	80	↑ 2
Voting Rate of Registered Students %	78	71	87	↑ 10
Voting Rate %	61	57	70	↑ 9

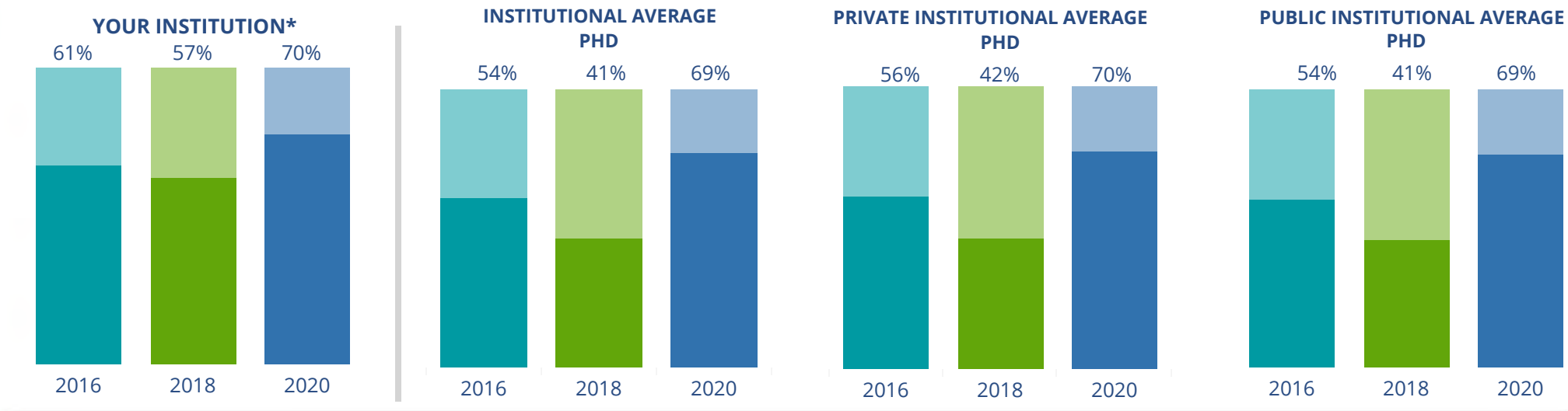
This page provides the numbers we used to calculate your voting, registration, and yield rates. The sub-categories under total student enrollment are the adjustments that we make to account for students who are ineligible to vote due to age or citizenship status. We also exclude, when correctly flagged, students who are not pursuing degrees.

We use IPEDS-derived estimates of NRAs when institutions do not submit non-resident alien status data to NSC, or we cannot verify the accuracy of the reported counts. This estimate is given by "IPEDS estimated non-resident aliens" on this page. If you believe the number of international students reported on this report is incorrect, you can manually adjust your institution's voting rates by using our recalculation tool. <https://id-he.tufts.edu/nsive/nsive-recalculation-tool>.

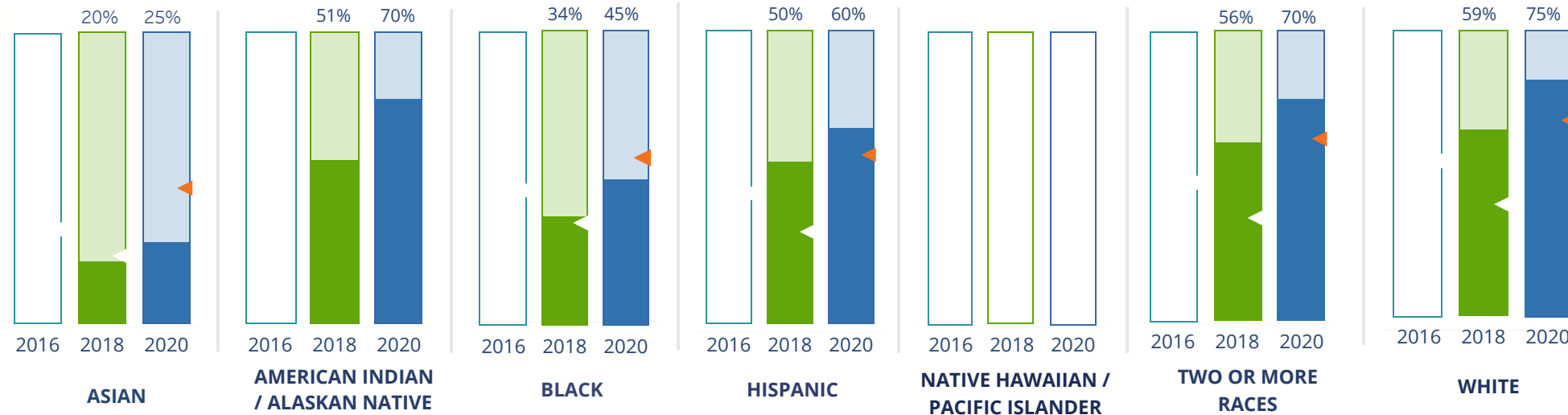
By Institution Types



These are estimated voting rates of your institution compared to the average voting rates of similar institutions in NSLVE. *"Your Institution" chart is presented at a different scale.



By Race / Ethnicity



These are estimated voting rates for race / ethnicity groups. These classifications are provided by campuses and are obtained following race reporting procedures* defined by the National Center for Education Statistics of the Institute of Education Sciences (IES). Please see our FAQ for more detail on why we cannot report national benchmark for some of the demographic groups:

<https://tufts.app.box.com/v/idhe-nsve-report-faq>

If you notice unavailable/missing data in this page, it could mean any of the following for your institution: (i) does not report this data; (ii) did not provide this data in past years; (iii) does not separately submit data for one or more of the demographic groups, or (iv) the data is reported for 10 or fewer students.

* <https://nces.ed.gov/ipeds/report-your-data/race-ethnicity-collecting-data-for-reporting-purposes>

Looking Closer

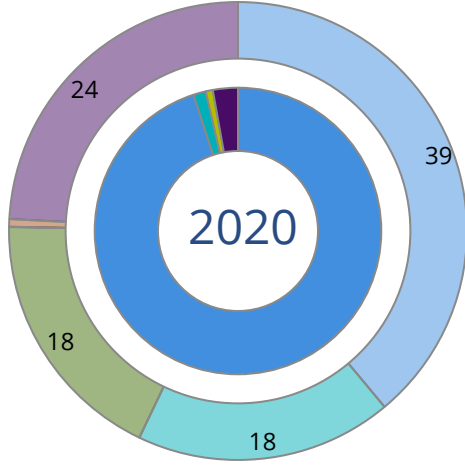
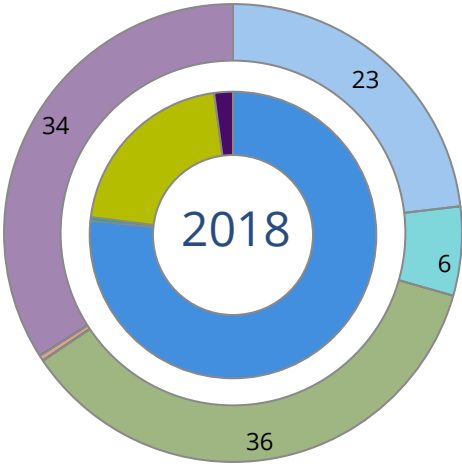
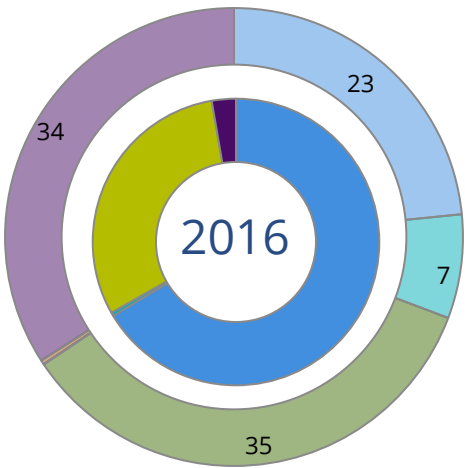
By Race/Ethnicity

This page provides the numbers we used to calculate race / ethnicity group voting rates. We include the counts of students and the change in rates between the two most recent comparable election years. If you notice unavailable/missing data in this page, it could mean any of the following for your institution: (i) does not report this data; (ii) did not provide this data in past years; (iii) does not separately submit data for one or more of the demographic groups, or (iv) the data is reported for 10 or fewer students.

	2016			2018			2020			2016-2020 Change (p.p)
	Enrolled	Voted	Rate	Enrolled	Voted	Rate	Enrolled	Voted	Rate	
Asian	-	-	-	535	105	20	817	206	25	-
American Indian/ Alaska Native	-	-	-	294	149	51	402	281	70	-
Black	-	-	-	92	31	34	100	45	45	-
Hispanic	-	-	-	461	231	50	465	280	60	-
Native Hawaiian/ Pacific Islander	-	-	-	23	-	-	15	-	-	-
2 or More Races	-	-	-	422	236	56	411	286	70	-
White	-	-	-	7,630	4,504	59	6,806	5,072	75	-
Race Unknown	11,599	6,825	59	695	333	48	503	363	72	↑ 13

By Voting Method

Not-In-Person Early Vote In-Person Other Provisional Unknown



	2016		2018		2020		2016-2020	
	Voted	Rate	Voted	Rate	Voted	Rate	Change (p.p.)	
Early Vote	28	0	22	0	94	1	1	↑
In-Person on Election Day	2,081	31	1,171	21	53	1	-30	↓
Not-In-Person	4,535	66	4,289	77	6,214	95	29	↑
Other	-	-	-	-	-	-	-	
Provisional	-	-	-	-	-	-	-	
Voting Method Unknown	180	3	113	2	177	3	0	↑

These are estimated rates for vote method utilization, the number of students utilizing each method, and the percent of students utilizing each method. Not all U.S. states provide information on vote method; voting method for voter files from these states are classified "Voting Method Unknown." For a list of these states, see our FAQ. <https://idhe.tufts.edu/nsive/nsive-faq#CampusReports>

By Age Group

	2016	2018	2020
18-21	56%	50%	67%
22-24	57%	54%	73%
25-29	61%	59%	69%
30-39	60%	60%	66%
40-49	67%	61%	64%
50+	75%	72%	84%

Voting is habit-forming and young voters will usually continue as voters in subsequent elections. Also, young voters are more likely to be contacted by campaigns and are visible, and therefore significant, to elected officials. While in the past, we have seen voting rates increase across age groups, in recent cycles, the most significant increases have been among first-time and the youngest voters. Some colleges serve primarily young students, traditionally viewed as students in the 18-21 or 22-24 categories here. Others have much higher numbers of enrolled older undergraduate or graduate students.

Looking Closer

By Age Group

Here, we provide the numbers of students in each age category and the voting rates for each group. These are based on the student’s age on the day of the election, as calculated by the National Student Clearinghouse using data from student enrollment records.

	2016			2018			2020			2016-2020 Change (p.p)
	Enrolled	Voted	Rate	Enrolled	Voted	Rate	Enrolled	Voted	Rate	
18-21	4,787	2,703	56	4,008	2,010	50	3,737	2,521	67	↑ 11
22-24	2,468	1,415	57	2,114	1,143	54	1,763	1,283	73	↑ 15
25-29	1,921	1,171	61	1,711	1,011	59	1,602	1,106	69	↑ 8
30-39	1,606	966	60	1,478	888	60	1,447	953	66	↑ 6
40-49	544	365	67	580	356	61	694	446	64	↓ -3
50+	273	205	75	261	188	72	276	231	84	↑ 9

Looking Closer

By Sex

	2016			2018			2020			2016-2020	
	Enrolled	Voted	Rate	Enrolled	Voted	Rate	Enrolled	Voted	Rate	Change (p.p)	
Female	6,497	3,974	61	5,751	3,251	57	5,625	3,944	70	↑	9
Male	5,101	2,850	56	4,399	2,344	53	3,894	2,596	67	↑	11

These are estimated voting rates for sex groups and the numbers we used to calculate their voting rates. These classifications are provided by campuses and are obtained following the reporting procedures defined by the National Center for Education Statistics (NCES) of the Institute of Education Sciences (IES). Presently, NCES requires institutions to report students as “Male” or “Female” only.*

If you notice missing data in this page, it could mean any of the following for your institution: (i) does not report this data; (ii) did not provide this data in past years; (iii) does not separately submit data for one or more of the demographic groups, or (iv) the data is reported for 10 or fewer students.

*<https://surveys.nces.ed.gov/ipeds/public/survey-materials/faq?faqid=11>

Looking Closer

By Education Level / Undergraduate Class Year

	2016			2018			2020			2016-2020	
	Enrolled	Voted	Rate (%)	Enrolled	Voted	Rate (%)	Enrolled	Voted	Rate (%)	Change (p.p)	
EDUCATION LEVEL											
Undergraduate	9,040	5,184	57	7,439	3,968	53	6,045	4,228	70	↑	13
Graduate	2,529	1,625	64	2,708	1,624	60	2,831	1,888	67	↑	2
Class Unknown	30	16	53	-	-	-	643	85	13	↓	-40
CLASS YEAR											
First Year	2,528	51	1,280	2,034	43	882	1,757	61	1,079	↑	11
Second Year	1,918	59	1,135	1,558	53	820	1,369	72	983	↑	13
Upper Level	4,875	60	2,939	4,120	59	2,425	3,588	74	2,660	↑	14
ENROLLMENT STATUS											
Full-time	9,204	5,416	59	7,737	4,282	55	6,848	4,872	71	↑	12
Part-time	2,393	1,407	59	2,412	1,314	54	2,671	1,668	62	↑	4

These are estimated voting rates by Education Level (undergraduate/graduate), Class Year, and Enrollment Status (full-time/part-time), and the numbers we used to calculate these rates.

If you notice missing data in this page, it could mean any of the following for your institution: (i) does not report this data; (ii) did not provide this data in past years; (iii) does not separately submit data for one or more of the demographic groups, or (iv) the data is reported for 10 or fewer students.

By Field of Study

FIELDS	2016			2018			2020			2016-2020 RateChange (p.p)
	Enrolled	Voted	Rate	Enrolled	Voted	Rate	Enrolled	Voted	Rate	
Area, Ethnic, Cultural, and Gender Studies	35	25	71	32	23	72	32	21	66	↓ -6
Biological and Biomedical Sciences	475	285	60	430	248	58	618	434	70	↑ 10
Business, Management, and Marketing	1,433	780	54	1,110	559	50	1,233	848	69	↑ 14
Communication and Journalism	433	263	61	359	202	56	284	201	71	↑ 10
Computer and Information Sciences	229	127	55	246	112	46	210	147	70	↑ 15
Construction Trades	23	12	52	31	18	58	18	–	–	–
Education	1,092	673	62	931	550	59	503	383	76	↑ 15

These are estimated voting rates by field of study, and the numbers we used to calculate the field of study rates. For an explanation of CIP codes, please see our FAQ.* There are roughly 8,000 fields of study among U.S. colleges and universities, so we provide rates for condensed categories.

*<https://tufts.app.box.com/v/idhe-nslve-report-faq>

By Field of Study

FIELDS	2016			2018			2020			2016-2020 Change (p.p)
	Enrolled	Voted	Rate	Enrolled	Voted	Rate	Enrolled	Voted	Rate	
Engineering and Engineering Technologies	33	18	55	21	15	71	32	23	72	↑ 17
English Language and Literature	288	187	65	240	153	64	181	135	75	↑ 10
Foreign Languages, Literatures, and Lingui..	104	72	69	85	52	61	62	43	69	↑ 0
Health Professions	1,843	995	54	1,783	830	47	2,008	1,121	56	↑ 2
History	180	125	69	144	92	64	125	98	78	↑ 9
Legal Professions and Studies	261	191	73	245	177	72	255	210	82	↑ 9
Liberal Arts and Sciences, and Humanities	1,111	587	53	887	449	51	641	438	68	↑ 15
Mathematics and Statistics	111	70	63	82	45	55	66	46	70	↑ 7
Mechanic and Repair Technologies/Techni..	44	15	34	27	16	59	26	12	46	↑ 12
Multi/Interdisciplinary Studies	237	116	49	327	177	54	257	177	69	↑ 20
Natural Resources and Conservation	880	571	65	690	380	55	686	500	73	↑ 8
Personal and Culinary Services	14	–	–	41	15	37	25	19	76	–
Philosophy and Religious Studies	35	23	66	27	18	67	39	33	85	↑ 19
Physical Sciences	216	135	63	209	128	61	165	112	68	↑ 5

By Field of Study

FIELDS	2016			2018			2020			2016-2020 Change (p.p)
	Enrolled	Voted	Rate	Enrolled	Voted	Rate	Enrolled	Voted	Rate	
Precision Production	59	27	46	39	17	44	36	25	69	↑ 24
Psychology	493	289	59	415	215	52	402	280	70	↑ 11
Public Administration and Social Service Professions	308	204	66	298	215	72	313	254	81	↑ 15
Social Sciences	791	501	63	629	392	62	618	464	75	↑ 12
Visual and Performing Arts	693	427	62	682	406	60	594	438	74	↑ 12
Unknown	57	33	58	44	33	75	78	62	79	↑ 22

About This Report

Thank you for participating in the National Study of Learning, Voting, and Engagement.

Since NSLVE's launch in 2013, nearly 1,200 colleges and universities have signed up to receive their voting rates for the 2012, 2014, 2016, 2018, and 2020 federal elections.

Along with others, your institution's participation in this study has allowed us to build a robust database of over 50 million college student records, about 10 million for each election year, that serve as a foundation for innovative research on college student political learning and engagement in democracy.

NSLVE is a signature initiative of the Institute for Democracy and Higher Education (IDHE) at Tufts University's Jonathan M. Tisch College of Civic Life. The mission of IDHE is to shift college and university priorities and culture to advance political learning, agency, and equity. We achieve our mission through research, resource development, technical assistance, and advocacy.

About the Data

The voter registration and voting rates in this report reflect the percentage of your institution's students who were eligible to vote and who actually voted in the 2016, 2018, and 2020 elections.

These results are based on enrollment records your institution submitted to the National Student Clearinghouse (NSC) and publicly available voting files collected by L2 Political.

Enrollment lists are adjusted by deducting students under age 18 (at the time of the election), people identified as non-degree seeking and those identified by campuses as "nonresident aliens" (NRAs) (the federal government's category for mostly international students). Unfortunately, not all campuses report NRAs to NSC. For those campuses, we use IPEDS to calculate the number of NRA students on each campus and adjust NSC enrollment numbers to estimate the number of students to remove. We also quality check NRA removals by verifying that there is little to no discrepancy between the number of international students reported by the campus to IPEDS and to NSC. We cannot adjust subgroup analyses absent identification of NRAs verified by the process above. We welcome closer partnerships with individual colleges and universities to provide more accurate rates. For more on the data and the matching process, see our FAQ on Campus Reports.

The University of Montana

Thank you for the work you do to improve your students' political learning and engagement. We hope that you find your NSLVE report useful. For up-to-date news on NSLVE data, resources, and to sign up for our newsletter visit: <https://idhe.tufts.edu>.

References: IDHE encourages report recipients to share this report as broadly as possible, including posting it on the college or university's website. When doing so, please use the following citation: Institute for Democracy & Higher Education: National Study of Learning, Voting and Engagement. (2021). 2016, 2018, and 2020 report for _____ [name of institution]. Medford, MA.



Barnum Hall
163 Packard Ave.
Medford, MA 02155

tischcollege@tufts.edu
617.627.3453



Institute for Democracy & Higher Education:
National Study of Learning, Voting, and Engagement
Barnum Hall, Medford, MA 02155

Follow Us on Twitter: @TuftsIDHE
NSLVE@tufts.edu
617.627.0620