



October 2021

Student Voting Rates for University Of Mississippi

2020 NSLVE Campus Report



Jonathan M. Tisch
College of Civic Life



INSTITUTE FOR DEMOCRACY
& HIGHER EDUCATION

October 2021

Dear Colleagues:

We are pleased to send this tailored report containing your students' voting rates for 2020. This report contains three years of relevant topline data: 2016, 2018, and 2020. As always, we disaggregate the data so you can better identify and address gaps in participation.

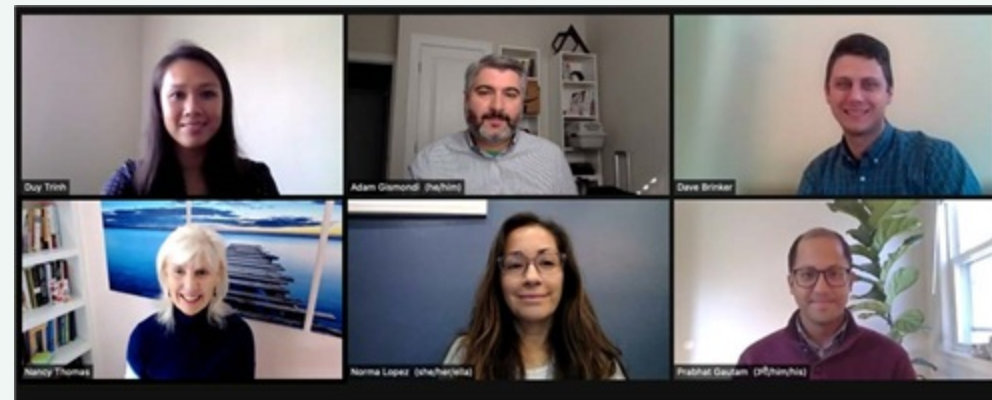
College and university students participated in record-breaking numbers in the 2020 election. In 2016, the Average Institutional Voting Rate was 53%. This year, it jumped to 66%. We encourage you to review Democracy Counts 2020, our most recent national report.

As in past years, we urge you to share this report widely and strategically, particularly with faculty who, in 2020, were often the most consistent communicators with students about ever-changing voting conditions and deadlines. We also urge you to review our recommendations for engaging elections to cultivate a robust and healthy campus climate for political engagement, discourse, equity, and participation: Election Imperatives (2019) and the more recent Election Imperatives: A Time of Physical Distancing and Social Action. Since "pervasive political discussions" and attentiveness to the campus culture around speech and academic freedom are among our top recommendations, we direct you to our discussion guides on talking about your NSLVE report, on free speech and inclusion, and on hot topics, our Making Sense of ... guides.

Finally, we always encourage you to work with us. Help us help you get better data by reaching out. Email IDHE@Tufts.edu for more information. And as always, watch your inbox for our periodic newsletter, IDHE Update, for announcements about upcoming releases and new resources.

Congratulations on engaging your students in the 2020 election. Remember, student political learning is a year-round objective. Elections may be episodic, but student political engagement should not be.

All the Best,
IDHE Team

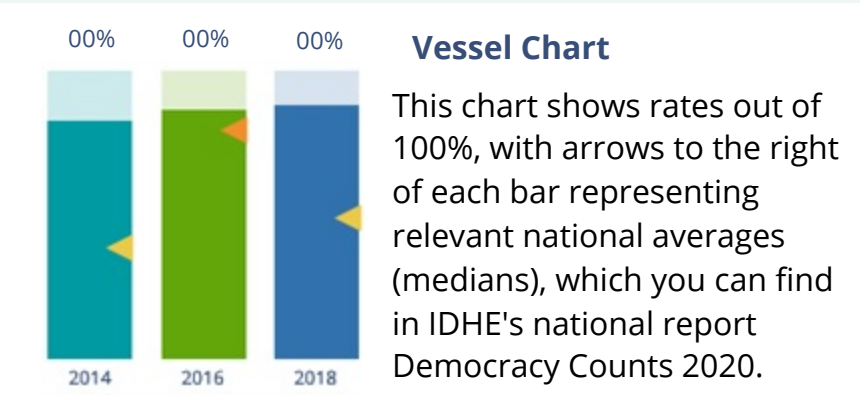


(Top Row from left) Duy Trinh, Program Administrator; Adam Gismondi, Director of Impact; Dave Brinker, Senior Researcher;
(Bottom Row from left) Nancy Thomas, Director; Norma López, Postdoctoral Scholar; Prabhat Gautam, Data Manager.

We also want to acknowledge and thank **Syed Golam Mohaimen, M.S. student in Data Science at Tufts University** for his contributions toward the creation of these reports.

In This Report

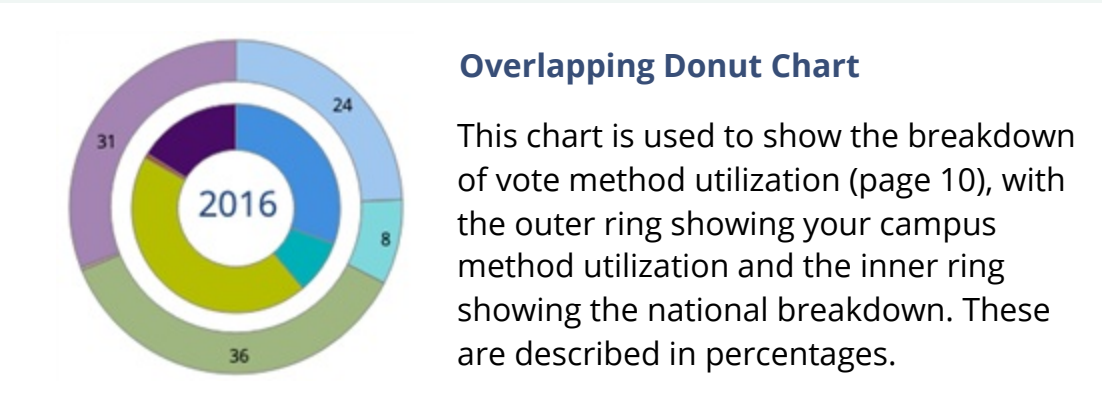
This report presents data on student voter participation rates for your campus. The topline counts on page 5 tells you how many students voted, but we encourage you to look carefully at the data on subsequent pages to learn who voted. Data are presented in the form of vessel charts, overlapping donut charts, and tables.



	2014			2018			2014-2018 Change (p.p.)
	Enrolled	Voted	Rate (%)	Enrolled	Voted	Rate (%)	
Asian	-	-	-	-	-	-	-
American Indian/ Alaska Native	-	-	-	-	-	-	-
Black	-	-	-	-	-	-	-
Hispanic	-	-	-	-	-	-	-

Tables

The tables show, on the left-side columns, the numbers of students and the rates from 2016, 2018, and 2020. On the left-side, percentage point (p.p.) changes between 2016 and 2020. A red down arrow indicates a decrease, a green up arrow indicates an increase, and a yellow arrow pointing to the right indicates no change. "-" in these tables indicates that the data is unavailable/missing, or is available for 10 or less students.



Voting, Registration and Yield Rates

YOUR INSTITUTION

53.4%

2020 Voting Rate

+25.0

Change From 2016

ALL INSTITUTIONS

66%

2020 Voting Rate

REGISTRATION RATE

Year	Rate
2016	60.0%
2018	62.6%
2020	76.3%

The **Registration Rate** is the percent of your voting-eligible students who registered to vote.

VOTING RATE OF REGISTERED STUDENTS

Year	Rate
2016	47.4%
2018	27.9%
2020	69.9%

The **Voting Rate of Registered Students** is the percent of registered students who voted on Election Day. We often refer to this as the “yield” rate.

VOTING RATE

Year	Rate
2016	28.4%
2018	17.5%
2020	53.4%

The **Voting Rate** is the percentage of eligible students who voted on Election Day. The voting rate is also the product of the registration and yield rates.

Looking Closer

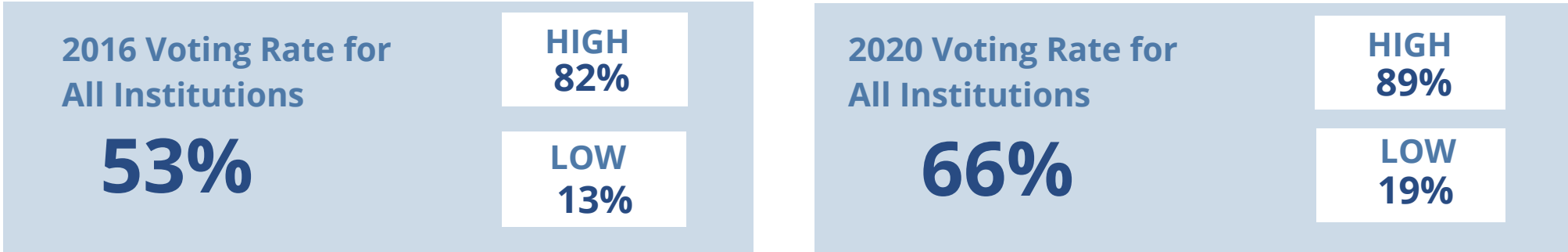
Voting and Registration Rates

	2016	2018	2020	2016-2020 Change (p.p.)
Total Student Enrollment	23,251	22,240	20,867	↓ -2,384
(Age under 18/Unknown)	-	-	-	-
(IPEDS estimated non-resident aliens)	796	826	664	↓ -132
(FERPA records blocked)	75	43	47	↓ -28
(Non-Degree Seeking Students)	61	33	65	↑ 4
Total eligible voters	22,319	21,337	20,091	↓ -2,228
Number of students who registered	13,383	13,347	15,338	↑ 1,955
Number of students who voted	6,349	3,729	10,719	↑ 4,370
Registration Rate %	60	63	76	↑ 16
Voting Rate of Registered Students %	47	28	70	↑ 22
Voting Rate %	28	17	53	↑ 25

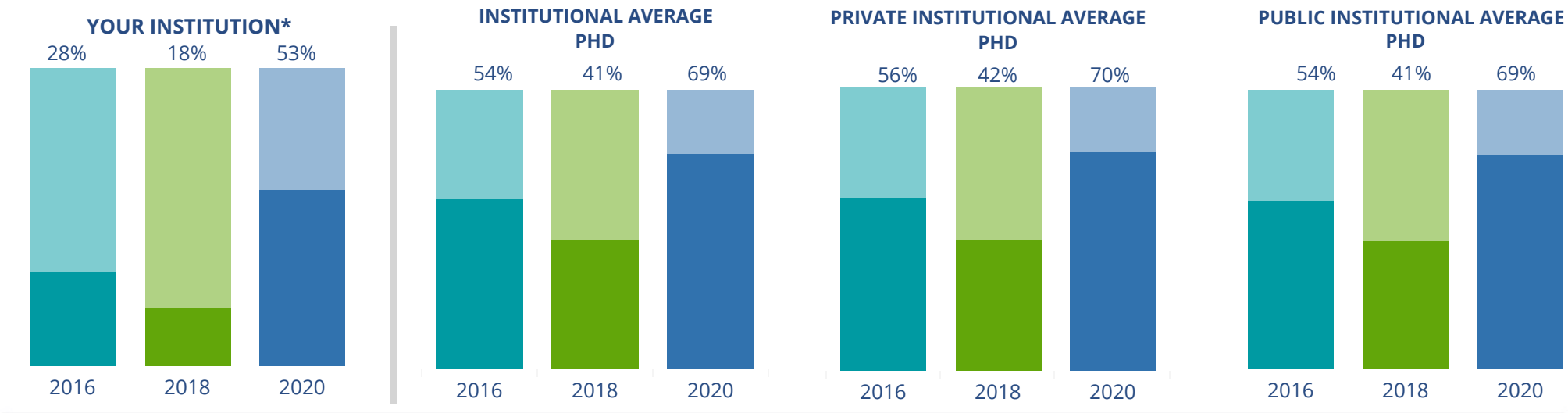
This page provides the numbers we used to calculate your voting, registration, and yield rates. The sub-categories under total student enrollment are the adjustments that we make to account for students who are ineligible to vote due to age or citizenship status. We also exclude, when correctly flagged, students who are not pursuing degrees.

We use IPEDS-derived estimates of NRAs when institutions do not submit non-resident alien status data to NSC, or we cannot verify the accuracy of the reported counts. This estimate is given by "IPEDS estimated non-resident aliens" on this page. If you believe the number of international students reported on this report is incorrect, you can manually adjust your institution's voting rates by using our recalculation tool. <https://id-he.tufts.edu/nslve/nslve-recalculation-tool>.

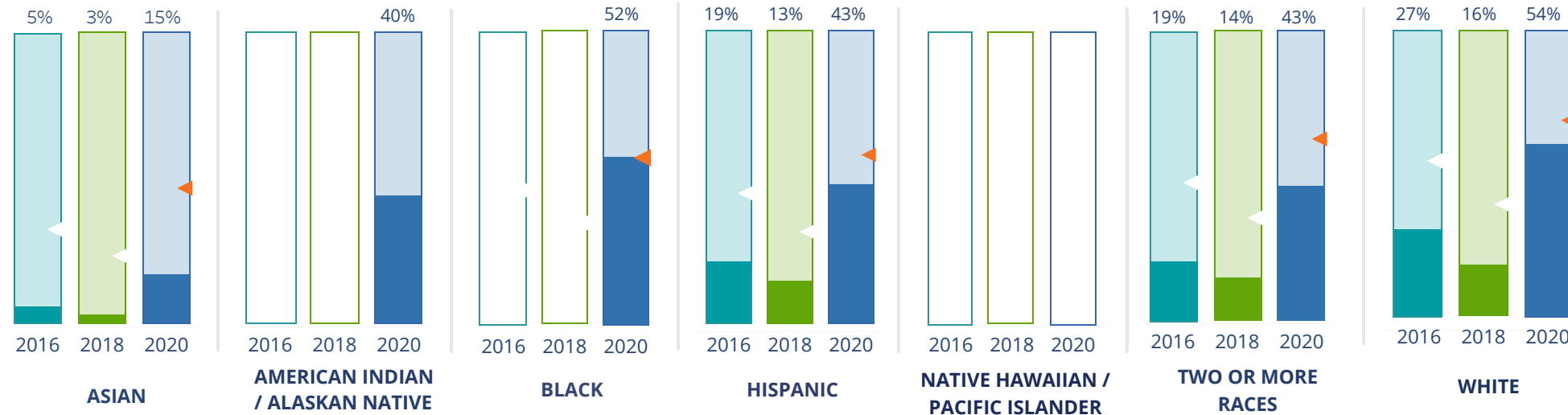
By Institution Types



These are estimated voting rates of your institution compared to the average voting rates of similar institutions in NSLVE. *"Your Institution" chart is presented at a different scale.



By Race / Ethnicity



These are estimated voting rates for race / ethnicity groups. These classifications are provided by campuses and are obtained following race reporting procedures* defined by the National Center for Education Statistics of the Institute of Education Sciences (IES). Please see our FAQ for more detail on why we cannot report national benchmark for some of the demographic groups:

<https://tufts.app.box.com/v/idhe-nsve-report-faq>

If you notice unavailable/missing data in this page, it could mean any of the following for your institution: (i) does not report this data; (ii) did not provide this data in past years; (iii) does not separately submit data for one or more of the demographic groups, or (iv) the data is reported for 10 or fewer students.

* <https://nces.ed.gov/ipeds/report-your-data/race-ethnicity-collecting-data-for-reporting-purposes>

Looking Closer

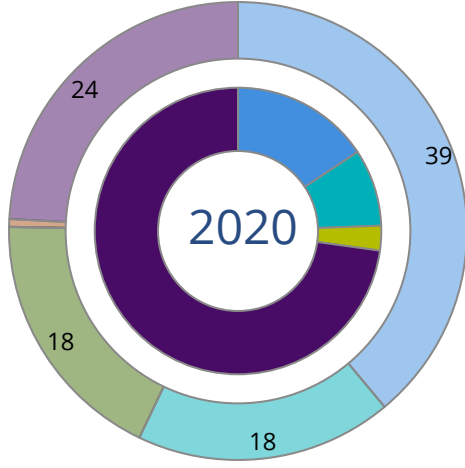
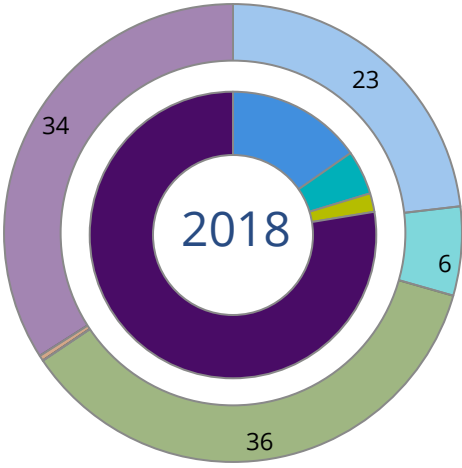
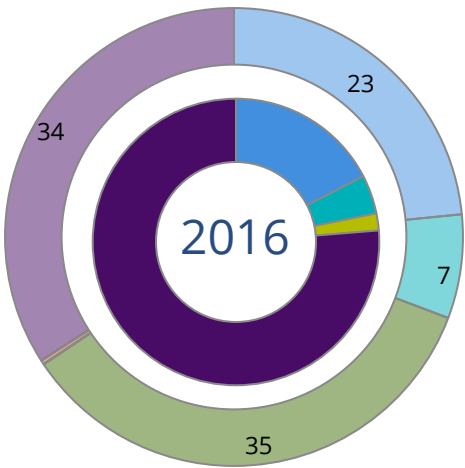
By Race/Ethnicity

This page provides the numbers we used to calculate race / ethnicity group voting rates. We include the counts of students and the change in rates between the two most recent comparable election years. If you notice unavailable/missing data in this page, it could mean any of the following for your institution: (i) does not report this data; (ii) did not provide this data in past years; (iii) does not separately submit data for one or more of the demographic groups, or (iv) the data is reported for 10 or fewer students.

	2016			2018			2020			2016-2020 Change (p.p)
	Enrolled	Voted	Rate	Enrolled	Voted	Rate	Enrolled	Voted	Rate	
Asian	828	45	5	900	26	3	810	124	15	↑ 10
American Indian/ Alaska Native	57	-	-	57	-	-	53	21	40	-
Black	-	-	-	-	-	-	2,398	1,244	52	-
Hispanic	707	137	19	753	100	13	780	335	43	↑ 24
Native Hawaiian/ Pacific Islander	27	-	-	26	-	-	15	-	-	-
2 or More Races	451	85	19	465	64	14	426	181	42	↑ 24
White	16,100	4,392	27	15,325	2,476	16	13,982	7,603	54	↑ 27
Race Unknown	4,942	1,679	34	4,634	1,058	23	2,288	1,207	53	↑ 19

By Voting Method

Not-In-Person Early Vote In-Person Other Provisional Unknown



	2016		2018		2020		2016-2020
	Voted	Rate	Voted	Rate	Voted	Rate	Change (p.p.)
Early Vote	282	4	185	5	935	9	4 ↑
In-Person on Election Day	118	2	79	2	296	3	1 ↑
Not-In-Person	1,107	17	569	15	1,686	16	-2 ↓
Other	-	-	-	-	-	-	-
Provisional	-	-	-	-	-	-	-
Voting Method Unknown	4,842	76	2,895	78	7,797	73	-4 ↓

These are estimated rates for vote method utilization, the number of students utilizing each method, and the percent of students utilizing each method. Not all U.S. states provide information on vote method; voting method for voter files from these states are classified "Voting Method Unknown." For a list of these states, see our FAQ. <https://idhe.tufts.edu/nsive/nsive-faq#CampusReports>

By Age Group

	2016	2018	2020
18-21	23%	13%	53%
22-24	30%	17%	49%
25-29	32%	22%	46%
30-39	39%	30%	46%
40-49	58%	47%	63%
50+	65%	58%	71%

Voting is habit-forming and young voters will usually continue as voters in subsequent elections. Also, young voters are more likely to be contacted by campaigns and are visible, and therefore significant, to elected officials. While in the past, we have seen voting rates increase across age groups, in recent cycles, the most significant increases have been among first-time and the youngest voters. Some colleges serve primarily young students, traditionally viewed as students in the 18-21 or 22-24 categories here. Others have much higher numbers of enrolled older undergraduate or graduate students.

Looking Closer

By Age Group

Here, we provide the numbers of students in each age category and the voting rates for each group. These are based on the student’s age on the day of the election, as calculated by the National Student Clearinghouse using data from student enrollment records.

	2016			2018			2020			2016-2020	
	Enrolled	Voted	Rate	Enrolled	Voted	Rate	Enrolled	Voted	Rate	Change (p.p)	
18-21	14,027	3,268	23	13,310	1,754	13	12,070	6,433	53	↑	30
22-24	5,066	1,508	30	5,167	902	17	4,977	2,460	49	↑	20
25-29	2,009	638	32	1,950	428	22	1,941	892	46	↑	14
30-39	1,319	521	39	1,131	341	30	1,114	510	46	↑	6
40-49	482	279	58	429	203	47	470	296	63	↑	5
50+	209	135	65	173	101	58	180	128	71	↑	7

Looking Closer

By Sex

	2016			2018			2020			2016-2020	
	Enrolled	Voted	Rate	Enrolled	Voted	Rate	Enrolled	Voted	Rate	Change (p.p)	
Female	11,571	3,411	29	11,112	1,953	18	10,548	5,961	57	↑	27
Male	9,348	2,007	21	8,925	1,210	14	7,962	3,566	45	↑	23

These are estimated voting rates for sex groups and the numbers we used to calculate their voting rates. These classifications are provided by campuses and are obtained following the reporting procedures defined by the National Center for Education Statistics (NCES) of the Institute of Education Sciences (IES). Presently, NCES requires institutions to report students as “Male” or “Female” only.*

If you notice missing data in this page, it could mean any of the following for your institution: (i) does not report this data; (ii) did not provide this data in past years; (iii) does not separately submit data for one or more of the demographic groups, or (iv) the data is reported for 10 or fewer students.

*<https://surveys.nces.ed.gov/ipeds/public/survey-materials/faq?faqid=11>

Looking Closer

By Education Level / Undergraduate Class Year

	2016			2018			2020			2016-2020	
	Enrolled	Voted	Rate (%)	Enrolled	Voted	Rate (%)	Enrolled	Voted	Rate (%)	Change (p.p)	
EDUCATION LEVEL											
Undergraduate	18,880	4,780	25	17,814	2,632	15	16,010	8,299	52	↑	27
Graduate	4,227	1,566	37	4,342	1,094	25	4,741	2,420	51	↑	14
Class Unknown	-	-	-	-	-	-	-	-	-	-	-
CLASS YEAR											
First Year	4,947	19	958	4,085	11	450	3,464	48	1,651	↑	28
Second Year	3,914	23	892	3,524	12	428	3,099	52	1,602	↑	29
Upper Level	8,914	29	2,541	9,313	16	1,522	8,667	53	4,619	↑	25
ENROLLMENT STATUS											
Full-time	20,961	5,431	26	20,303	3,114	15	18,840	9,686	51	↑	26
Part-time	2,151	918	43	1,857	615	33	1,912	1,033	54	↑	11

These are estimated voting rates by Education Level (undergraduate/graduate), Class Year, and Enrollment Status (full-time/part-time), and the numbers we used to calculate these rates.

If you notice missing data in this page, it could mean any of the following for your institution: (i) does not report this data; (ii) did not provide this data in past years; (iii) does not separately submit data for one or more of the demographic groups, or (iv) the data is reported for 10 or fewer students.

By Field of Study

FIELDS	2016			2018			2020			2016-2020
	Enrolled	Voted	Rate	Enrolled	Voted	Rate	Enrolled	Voted	Rate	Change (p.p)
Area, Ethnic, Cultural, and Gender Studies	21	–	–	23	11	48	38	26	68	–
Biological and Biomedical Sciences	1,291	320	25	1,394	198	14	1,232	657	53	↑ 29
Business, Management, and Marketing	4,112	1,038	25	4,989	685	14	4,715	2,361	50	↑ 25
Communication and Journalism	1,454	373	26	1,624	228	14	1,557	883	57	↑ 31
Computer and Information Sciences	299	57	19	346	37	11	312	124	40	↑ 21
Education	1,521	578	38	1,454	381	26	1,402	812	58	↑ 20
Engineering and Engineering Technologies	1,356	268	20	1,286	145	11	1,100	460	42	↑ 22

These are estimated voting rates by field of study, and the numbers we used to calculate the field of study rates. For an explanation of CIP codes, please see our FAQ.* There are roughly 8,000 fields of study among U.S. colleges and universities, so we provide rates for condensed categories.

*<https://tufts.app.box.com/v/idhe-nslve-report-faq>

By Field of Study

FIELDS	2016			2018			2020			2016-2020 Change (p.p)
	Enrolled	Voted	Rate	Enrolled	Voted	Rate	Enrolled	Voted	Rate	
English Language and Literature	318	97	31	268	62	23	205	117	57	↑ 27
Family and Consumer/Human Sciences	24	–	–	22	–	–	23	12	52	–
Foreign Languages, Literatures, and Lingui..	178	43	24	184	30	16	137	73	53	↑ 29
Health Professions	3,998	1,387	35	3,898	769	20	4,022	2,102	52	↑ 18
History	191	56	29	205	64	31	176	103	59	↑ 29
Law Enforcement, Firefighting, and Protec..	613	169	28	542	98	18	514	254	49	↑ 22
Legal Professions and Studies	429	152	35	436	116	27	620	361	58	↑ 23
Liberal Arts and Sciences, and Humanities	3,399	691	20	1,599	227	14	640	295	46	↑ 26
Mathematics and Statistics	101	27	27	94	12	13	106	51	48	↑ 21
Multi/Interdisciplinary Studies	–	–	–	–	–	–	350	165	47	–
Parks, Recreation, Leisure, and Fitness Stu..	772	202	26	877	99	11	872	401	46	↑ 20
Philosophy and Religious Studies	43	–	–	40	–	–	29	15	52	–
Physical Sciences	484	108	22	460	50	11	348	147	42	↑ 20
Psychology	760	202	27	765	117	15	755	384	51	↑ 24

By Field of Study

FIELDS	2016			2018			2020			2016-2020 Change (p.p)
	Enrolled	Voted	Rate	Enrolled	Voted	Rate	Enrolled	Voted	Rate	
Public Administration and Social Service Professions	493	186	38	430	141	33	452	279	62	↑ 24
Social Sciences	786	248	32	795	173	22	727	432	59	↑ 28
Visual and Performing Arts	433	110	25	411	73	18	406	198	49	↑ 23
Unknown	36	-	-	18	-	-	14	-	-	-

About This Report

Thank you for participating in the National Study of Learning, Voting, and Engagement.

Since NSLVE's launch in 2013, nearly 1,200 colleges and universities have signed up to receive their voting rates for the 2012, 2014, 2016, 2018, and 2020 federal elections.

Along with others, your institution's participation in this study has allowed us to build a robust database of over 50 million college student records, about 10 million for each election year, that serve as a foundation for innovative research on college student political learning and engagement in democracy.

NSLVE is a signature initiative of the Institute for Democracy and Higher Education (IDHE) at Tufts University's Jonathan M. Tisch College of Civic Life. The mission of IDHE is to shift college and university priorities and culture to advance political learning, agency, and equity. We achieve our mission through research, resource development, technical assistance, and advocacy.

About the Data

The voter registration and voting rates in this report reflect the percentage of your institution's students who were eligible to vote and who actually voted in the 2016, 2018, and 2020 elections.

These results are based on enrollment records your institution submitted to the National Student Clearinghouse (NSC) and publicly available voting files collected by L2 Political.

Enrollment lists are adjusted by deducting students under age 18 (at the time of the election), people identified as non-degree seeking and those identified by campuses as "nonresident aliens" (NRAs) (the federal government's category for mostly international students). Unfortunately, not all campuses report NRAs to NSC. For those campuses, we use IPEDS to calculate the number of NRA students on each campus and adjust NSC enrollment numbers to estimate the number of students to remove. We also quality check NRA removals by verifying that there is little to no discrepancy between the number of international students reported by the campus to IPEDS and to NSC. We cannot adjust subgroup analyses absent identification of NRAs verified by the process above. We welcome closer partnerships with individual colleges and universities to provide more accurate rates. For more on the data and the matching process, see our FAQ on Campus Reports.

University Of Mississippi

Thank you for the work you do to improve your students' political learning and engagement. We hope that you find your NSLVE report useful. For up-to-date news on NSLVE data, resources, and to sign up for our newsletter visit: <https://idhe.tufts.edu>.

References: IDHE encourages report recipients to share this report as broadly as possible, including posting it on the college or university's website. When doing so, please use the following citation: Institute for Democracy & Higher Education: National Study of Learning, Voting and Engagement. (2021). 2016, 2018, and 2020 report for _____ [name of institution]. Medford, MA.



Barnum Hall
163 Packard Ave.
Medford, MA 02155

tischcollege@tufts.edu
617.627.3453



Institute for Democracy & Higher Education:
National Study of Learning, Voting, and Engagement
Barnum Hall, Medford, MA 02155

Follow Us on Twitter: @TuftsIDHE
NSLVE@tufts.edu
617.627.0620