



October 2021

Student Voting Rates for University of Massachusetts-Amherst

2020 NSLVE Campus Report



Jonathan M. Tisch
College of Civic Life



INSTITUTE FOR DEMOCRACY
& HIGHER EDUCATION

October 2021

Dear Colleagues:

We are pleased to send this tailored report containing your students' voting rates for 2020. This report contains three years of relevant topline data: 2016, 2018, and 2020. As always, we disaggregate the data so you can better identify and address gaps in participation.

College and university students participated in record-breaking numbers in the 2020 election. In 2016, the Average Institutional Voting Rate was 53%. This year, it jumped to 66%. We encourage you to review Democracy Counts 2020, our most recent national report.

As in past years, we urge you to share this report widely and strategically, particularly with faculty who, in 2020, were often the most consistent communicators with students about ever-changing voting conditions and deadlines. We also urge you to review our recommendations for engaging elections to cultivate a robust and healthy campus climate for political engagement, discourse, equity, and participation: Election Imperatives (2019) and the more recent Election Imperatives: A Time of Physical Distancing and Social Action. Since "pervasive political discussions" and attentiveness to the campus culture around speech and academic freedom are among our top recommendations, we direct you to our discussion guides on talking about your NSLVE report, on free speech and inclusion, and on hot topics, our Making Sense of ... guides.

Finally, we always encourage you to work with us. Help us help you get better data by reaching out. Email IDHE@Tufts.edu for more information. And as always, watch your inbox for our periodic newsletter, IDHE Update, for announcements about upcoming releases and new resources.

Congratulations on engaging your students in the 2020 election. Remember, student political learning is a year-round objective. Elections may be episodic, but student political engagement should not be.

All the Best,
IDHE Team



(Top Row from left) Duy Trinh, Program Administrator; Adam Gismondi, Director of Impact; Dave Brinker, Senior Researcher;
(Bottom Row from left) Nancy Thomas, Director; Norma López, Postdoctoral Scholar; Prabhat Gautam, Data Manager.

We also want to acknowledge and thank **Syed Golam Mohaimen, M.S. student in Data Science at Tufts University** for his contributions toward the creation of these reports.

In This Report

This report presents data on student voter participation rates for your campus. The topline counts on page 5 tells you how many students voted, but we encourage you to look carefully at the data on subsequent pages to learn who voted. Data are presented in the form of vessel charts, overlapping donut charts, and tables.



Vessel Chart

This chart shows rates out of 100%, with arrows to the right of each bar representing relevant national averages (medians), which you can find in IDHE's national report Democracy Counts 2020.

	2014			2018			2014-2018
	Enrolled	Voted	Rate (%)	Enrolled	Voted	Rate (%)	Change (p.p.)
Asian	-	-	-	-	-	-	-
American Indian/ Alaska Native	-	-	-	-	-	-	-
Black	-	-	-	-	-	-	-
Hispanic	-	-	-	-	-	-	-

Tables

The tables show, on the left-side columns, the numbers of students and the rates from 2016, 2018, and 2020. On the left-side, percentage point (p.p.) changes between 2016 and 2020. A red down arrow indicates a decrease, a green up arrow indicates an increase, and a yellow arrow pointing to the right indicates no change. "-" in these tables indicates that the data is unavailable/missing, or is available for 10 or less students.



Overlapping Donut Chart

This chart is used to show the breakdown of vote method utilization (page 10), with the outer ring showing your campus method utilization and the inner ring showing the national breakdown. These are described in percentages.

Voting, Registration and Yield Rates

YOUR INSTITUTION

74.7%

2020 Voting Rate

+20.3

Change From 2016

ALL INSTITUTIONS

66%

2020 Voting Rate

REGISTRATION RATE

Year	Rate
2016	82.7%
2018	80.2%
2020	87.9%

The **Registration Rate** is the percent of your voting-eligible students who registered to vote.

VOTING RATE OF REGISTERED STUDENTS

Year	Rate
2016	65.9%
2018	43.9%
2020	85.0%

The **Voting Rate of Registered Students** is the percent of registered students who voted on Election Day. We often refer to this as the “yield” rate.

VOTING RATE

Year	Rate
2016	54.4%
2018	35.2%
2020	74.7%

The **Voting Rate** is the percentage of eligible students who voted on Election Day. The voting rate is also the product of the registration and yield rates.

Looking Closer

Voting and Registration Rates

	2016	2018	2020	2016-2020 Change (p.p.)
Total Student Enrollment	30,013	30,465	31,426	↑ 1,413
(Age under 18/Unknown)	–	–	–	–
(IPEDS estimated non-resident aliens)	2,891	3,492	3,339	↑ 449
(FERPA records blocked)	79	41	32	↓ -47
(Non-Degree Seeking Students)	974	1,102	1,130	↑ 156
Total eligible voters	26,069	25,829	26,925	↑ 856
Number of students who registered	21,547	20,718	23,662	↑ 2,115
Number of students who voted	14,190	9,095	20,118	↑ 5,928
Registration Rate %	83	80	88	↑ 5
Voting Rate of Registered Students %	66	44	85	↑ 19
Voting Rate %	54	35	75	↑ 20

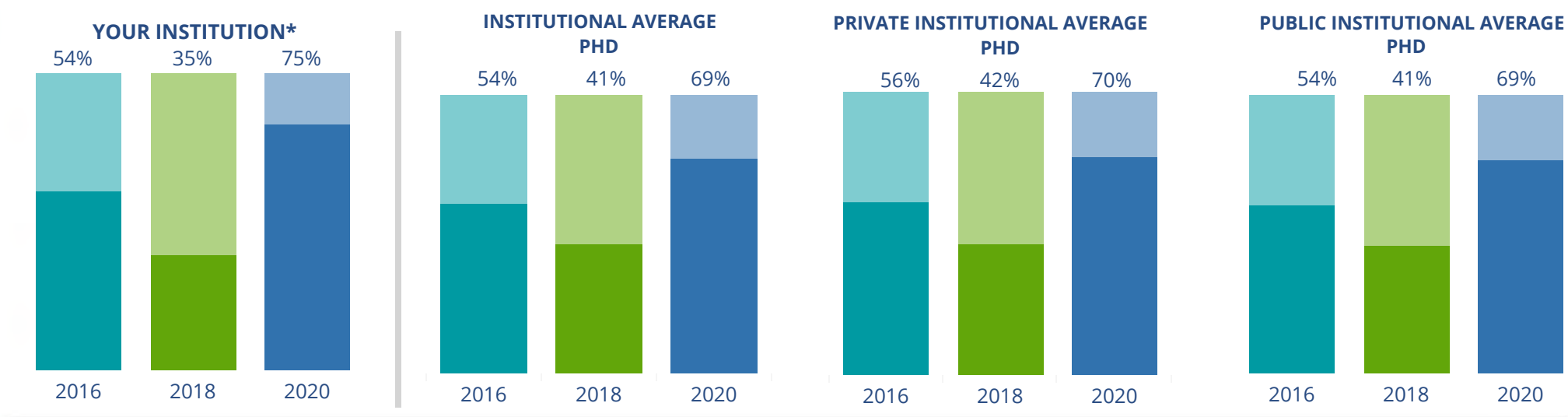
This page provides the numbers we used to calculate your voting, registration, and yield rates. The sub-categories under total student enrollment are the adjustments that we make to account for students who are ineligible to vote due to age or citizenship status. We also exclude, when correctly flagged, students who are not pursuing degrees.

We use IPEDS-derived estimates of NRAs when institutions do not submit non-resident alien status data to NSC, or we cannot verify the accuracy of the reported counts. This estimate is given by "IPEDS estimated non-resident aliens" on this page. If you believe the number of international students reported on this report is incorrect, you can manually adjust your institution's voting rates by using our recalculation tool. <https://id-he.tufts.edu/nsive/nsive-recalculation-tool>.

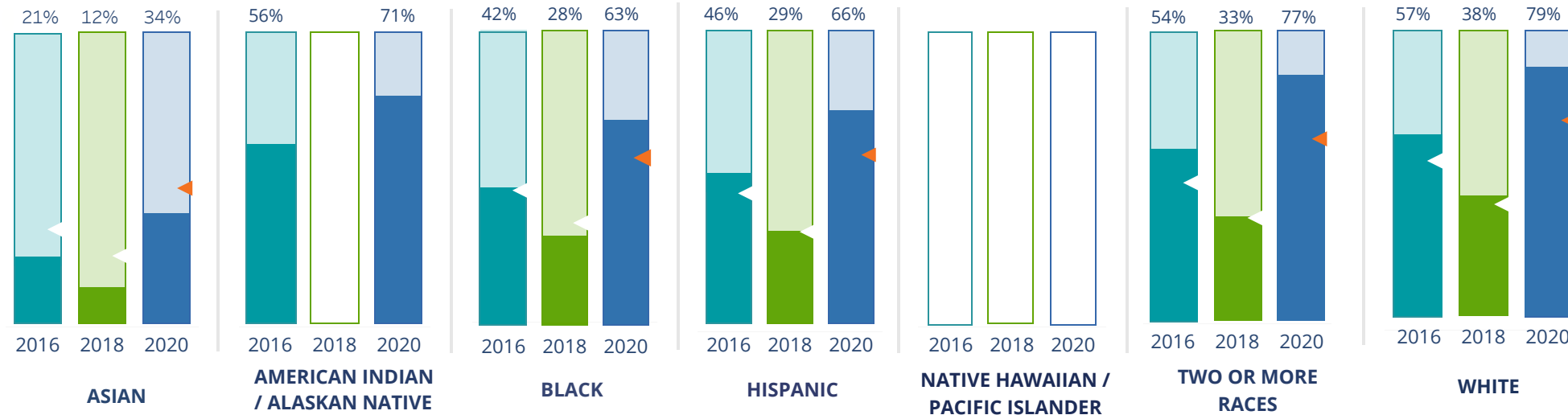
By Institution Types



These are estimated voting rates of your institution compared to the average voting rates of similar institutions in NSLVE. *"Your Institution" chart is presented at a different scale.



By Race / Ethnicity



These are estimated voting rates for race / ethnicity groups. These classifications are provided by campuses and are obtained following race reporting procedures* defined by the National Center for Education Statistics of the Institute of Education Sciences (IES). Please see our FAQ for more detail on why we cannot report national benchmark for some of the demographic groups:

<https://tufts.app.box.com/v/idhe-nsive-report-faq>

If you notice unavailable/missing data in this page, it could mean any of the following for your institution: (i) does not report this data; (ii) did not provide this data in past years; (iii) does not separately submit data for one or more of the demographic groups, or (iv) the data is reported for 10 or fewer students.

* <https://nces.ed.gov/ipeds/report-your-data/race-ethnicity-collecting-data-for-reporting-purposes>

Looking Closer

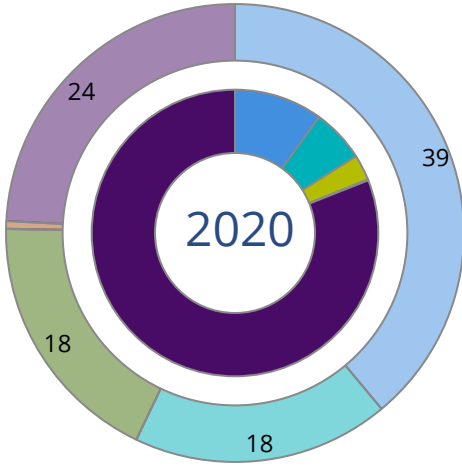
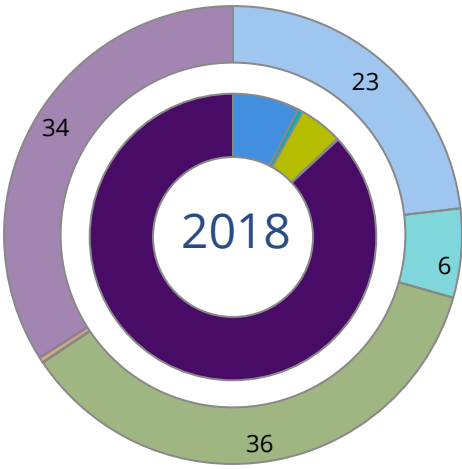
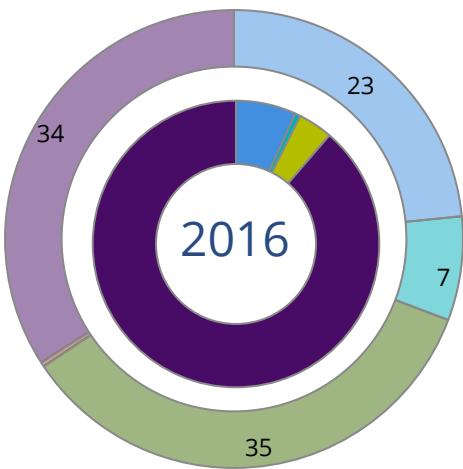
By Race/Ethnicity

This page provides the numbers we used to calculate race / ethnicity group voting rates. We include the counts of students and the change in rates between the two most recent comparable election years. If you notice unavailable/missing data in this page, it could mean any of the following for your institution: (i) does not report this data; (ii) did not provide this data in past years; (iii) does not separately submit data for one or more of the demographic groups, or (iv) the data is reported for 10 or fewer students.

	2016			2018			2020			2016-2020 Change (p.p)
	Enrolled	Voted	Rate	Enrolled	Voted	Rate	Enrolled	Voted	Rate	
Asian	4,368	918	21	5,125	592	12	5,477	1,871	34	↑ 13
American Indian/ Alaska Native	36	20	56	35	-	-	34	24	71	↑ 15
Black	1,182	499	42	1,375	379	28	1,497	944	63	↑ 21
Hispanic	1,735	805	46	2,069	596	29	2,387	1,567	66	↑ 19
Native Hawaiian/ Pacific Islander	16	-	-	16	-	-	15	-	-	-
2 or More Races	730	395	54	810	267	33	963	744	77	↑ 23
White	18,334	10,480	57	17,407	6,609	38	17,785	14,007	79	↑ 22
Race Unknown	2,454	1,067	43	2,344	639	27	1,969	951	48	↑ 5

By Voting Method

Not-In-Person Early Vote In-Person Other Provisional Unknown



	2016		2018		2020		2016-2020	
	Voted	Rate	Voted	Rate	Voted	Rate	Change (p.p.)	
Early Vote	86	1	54	1	1,203	6	5	↑
In-Person on Election Day	555	4	443	5	581	3	-1	↓
Not-In-Person	970	7	685	8	2,016	10	3	↑
Other	-	-	-	-	-	-	-	
Provisional	-	-	-	-	28	0	-	
Voting Method Unknown	12,576	89	7,908	87	16,290	81	-8	↓

These are estimated rates for vote method utilization, the number of students utilizing each method, and the percent of students utilizing each method. Not all U.S. states provide information on vote method; voting method for voter files from these states are classified "Voting Method Unknown." For a list of these states, see our FAQ. <https://idhe.tufts.edu/nsive/nsive-faq#CampusReports>

By Age Group

	2016	2018	2020
18-21	49%	27%	72%
22-24	46%	30%	60%
25-29	44%	34%	48%
30-39	49%	40%	53%
40-49	66%	55%	68%
50+	77%	71%	80%

Voting is habit-forming and young voters will usually continue as voters in subsequent elections. Also, young voters are more likely to be contacted by campaigns and are visible, and therefore significant, to elected officials. While in the past, we have seen voting rates increase across age groups, in recent cycles, the most significant increases have been among first-time and the youngest voters. Some colleges serve primarily young students, traditionally viewed as students in the 18-21 or 22-24 categories here. Others have much higher numbers of enrolled older undergraduate or graduate students.

Looking Closer

By Age Group

Here, we provide the numbers of students in each age category and the voting rates for each group. These are based on the student’s age on the day of the election, as calculated by the National Student Clearinghouse using data from student enrollment records.

	2016			2018			2020			2016-2020 Change (p.p)
	Enrolled	Voted	Rate	Enrolled	Voted	Rate	Enrolled	Voted	Rate	
18-21	18,573	9,045	49	18,796	5,129	27	19,615	14,114	72	↑ 23
22-24	3,658	1,683	46	3,926	1,194	30	3,787	2,274	60	↑ 14
25-29	2,516	1,105	44	2,520	868	34	2,614	1,250	48	↑ 4
30-39	2,446	1,196	49	2,392	968	40	2,504	1,330	53	↑ 4
40-49	1,081	716	66	1,033	570	55	1,074	726	68	↑ 1
50+	581	445	77	514	366	71	533	424	80	↑ 3

Looking Closer

By Sex

	2016			2018			2020			2016-2020
	Enrolled	Voted	Rate	Enrolled	Voted	Rate	Enrolled	Voted	Rate	Change (p.p)
Female	-	-	-	-	-	-	-	-	-	-
Male	-	-	-	-	-	-	-	-	-	-

These are estimated voting rates for sex groups and the numbers we used to calculate their voting rates. These classifications are provided by campuses and are obtained following the reporting procedures defined by the National Center for Education Statistics (NCES) of the Institute of Education Sciences (IES). Presently, NCES requires institutions to report students as “Male” or “Female” only.*

If you notice missing data in this page, it could mean any of the following for your institution: (i) does not report this data; (ii) did not provide this data in past years; (iii) does not separately submit data for one or more of the demographic groups, or (iv) the data is reported for 10 or fewer students.

*<https://surveys.nces.ed.gov/ipeds/public/survey-materials/faq?faqid=11>

Looking Closer

By Education Level / Undergraduate Class Year

	2016			2018			2020			2016-2020	
	Enrolled	Voted	Rate (%)	Enrolled	Voted	Rate (%)	Enrolled	Voted	Rate (%)	Change (p.p)	
EDUCATION LEVEL											
Undergraduate	22,853	11,336	50	23,013	6,716	29	23,459	16,658	71	↑	21
Graduate	6,002	2,854	48	6,127	2,362	39	6,611	3,419	52	↑	4
Class Unknown	–	–	–	41	17	41	57	41	72		–
CLASS YEAR											
First Year	4,788	45	2,156	4,997	23	1,169	3,744	72	2,706	↑	27
Second Year	5,428	48	2,607	5,372	25	1,365	5,072	71	3,605	↑	23
Upper Level	12,513	52	6,505	12,533	33	4,156	14,608	71	10,332	↑	19
ENROLLMENT STATUS											
Full-time	24,847	11,683	47	25,384	7,107	28	25,740	17,208	67	↑	20
Part-time	4,008	2,507	63	3,797	1,988	52	4,387	2,910	66	↑	4

These are estimated voting rates by Education Level (undergraduate/graduate), Class Year, and Enrollment Status (full-time/part-time), and the numbers we used to calculate these rates.

If you notice missing data in this page, it could mean any of the following for your institution: (i) does not report this data; (ii) did not provide this data in past years; (iii) does not separately submit data for one or more of the demographic groups, or (iv) the data is reported for 10 or fewer students.

By Field of Study

FIELDS	2016			2018			2020			2016-2020 RateChange (p.p)
	Enrolled	Voted	Rate	Enrolled	Voted	Rate	Enrolled	Voted	Rate	
Architecture	321	158	49	584	179	31	540	366	68	↑ 19
Area, Ethnic, Cultural, and Gender Studies	118	55	47	82	38	46	79	47	59	↑ 13
Biological and Biomedical Sciences	3,058	1,424	47	3,074	886	29	3,185	2,323	73	↑ 26
Business, Management, and Marketing	4,677	2,367	51	4,794	1,523	32	5,763	3,883	67	↑ 17
Communication and Journalism	1,038	540	52	1,177	353	30	1,152	818	71	↑ 19
Computer and Information Sciences	1,257	433	34	1,737	327	19	2,060	874	42	↑ 8
Education	660	360	55	636	281	44	675	455	67	↑ 13

These are estimated voting rates by field of study, and the numbers we used to calculate the field of study rates. For an explanation of CIP codes, please see our FAQ.* There are roughly 8,000 fields of study among U.S. colleges and universities, so we provide rates for condensed categories.

*<https://tufts.app.box.com/v/idhe-nslve-report-faq>

By Field of Study

FIELDS	2016			2018			2020			2016-2020 Change (p.p)
	Enrolled	Voted	Rate	Enrolled	Voted	Rate	Enrolled	Voted	Rate	
Engineering and Engineering Technologies	2,566	1,019	40	2,736	553	20	2,761	1,569	57	↑ 17
English Language and Literature	592	351	59	551	251	46	483	352	73	↑ 14
Foreign Languages, Literatures, and Lingui..	447	210	47	456	162	36	445	279	63	↑ 16
Health Professions	2,703	1,543	57	2,543	955	38	2,448	1,833	75	↑ 18
History	294	203	69	303	141	47	314	244	78	↑ 9
Legal Professions and Studies	226	103	46	235	66	28	281	210	75	↑ 29
Liberal Arts and Sciences, and Humanities	376	221	59	381	121	32	271	221	82	↑ 23
Mathematics and Statistics	686	239	35	725	156	22	802	375	47	↑ 12
Multi/Interdisciplinary Studies	1,440	858	60	1,308	578	44	1,270	927	73	↑ 13
Natural Resources and Conservation	635	391	62	609	272	45	585	483	83	↑ 21
Parks, Recreation, Leisure, and Fitness Stu..	437	195	45	428	72	17	422	309	73	↑ 29
Philosophy and Religious Studies	93	46	49	89	29	33	108	65	60	↑ 11
Physical Sciences	707	291	41	751	194	26	791	419	53	↑ 12
Psychology	1,497	778	52	1,518	507	33	1,698	1,332	78	↑ 26

By Field of Study

FIELDS	2016			2018			2020			2016-2020 Change (p.p)
	Enrolled	Voted	Rate	Enrolled	Voted	Rate	Enrolled	Voted	Rate	
Public Administration and Social Service Professions	40	25	63	41	30	73	69	51	74	↑ 11
Social Sciences	3,003	1,381	46	2,817	874	31	2,482	1,694	68	↑ 22
Visual and Performing Arts	612	366	60	584	260	45	492	361	73	↑ 14
Unknown	146	36	25	57	22	39	65	46	71	↑ 46

About This Report

Thank you for participating in the National Study of Learning, Voting, and Engagement.

Since NSLVE's launch in 2013, nearly 1,200 colleges and universities have signed up to receive their voting rates for the 2012, 2014, 2016, 2018, and 2020 federal elections.

Along with others, your institution's participation in this study has allowed us to build a robust database of over 50 million college student records, about 10 million for each election year, that serve as a foundation for innovative research on college student political learning and engagement in democracy.

NSLVE is a signature initiative of the Institute for Democracy and Higher Education (IDHE) at Tufts University's Jonathan M. Tisch College of Civic Life. The mission of IDHE is to shift college and university priorities and culture to advance political learning, agency, and equity. We achieve our mission through research, resource development, technical assistance, and advocacy.

About the Data

The voter registration and voting rates in this report reflect the percentage of your institution's students who were eligible to vote and who actually voted in the 2016, 2018, and 2020 elections.

These results are based on enrollment records your institution submitted to the National Student Clearinghouse (NSC) and publicly available voting files collected by L2 Political.

Enrollment lists are adjusted by deducting students under age 18 (at the time of the election), people identified as non-degree seeking and those identified by campuses as "nonresident aliens" (NRAs) (the federal government's category for mostly international students). Unfortunately, not all campuses report NRAs to NSC. For those campuses, we use IPEDS to calculate the number of NRA students on each campus and adjust NSC enrollment numbers to estimate the number of students to remove. We also quality check NRA removals by verifying that there is little to no discrepancy between the number of international students reported by the campus to IPEDS and to NSC. We cannot adjust subgroup analyses absent identification of NRAs verified by the process above. We welcome closer partnerships with individual colleges and universities to provide more accurate rates. For more on the data and the matching process, see our FAQ on Campus Reports.

University of Massachusetts-Amherst

Thank you for the work you do to improve your students' political learning and engagement. We hope that you find your NSLVE report useful. For up-to-date news on NSLVE data, resources, and to sign up for our newsletter visit: <https://idhe.tufts.edu>.

References: IDHE encourages report recipients to share this report as broadly as possible, including posting it on the college or university's website. When doing so, please use the following citation: Institute for Democracy & Higher Education: National Study of Learning, Voting and Engagement. (2021). 2016, 2018, and 2020 report for _____ [name of institution]. Medford, MA.



Barnum Hall
163 Packard Ave.
Medford, MA 02155

tischcollege@tufts.edu
617.627.3453



Institute for Democracy & Higher Education:
National Study of Learning, Voting, and Engagement
Barnum Hall, Medford, MA 02155

Follow Us on Twitter: @TuftsIDHE
NSLVE@tufts.edu
617.627.0620