



October 2021

Student Voting Rates for University of Maine

2020 NSLVE Campus Report

October 2021

Dear Colleagues:

We are pleased to send this tailored report containing your students' voting rates for 2020. This report contains three years of relevant topline data: 2016, 2018, and 2020. As always, we disaggregate the data so you can better identify and address gaps in participation.

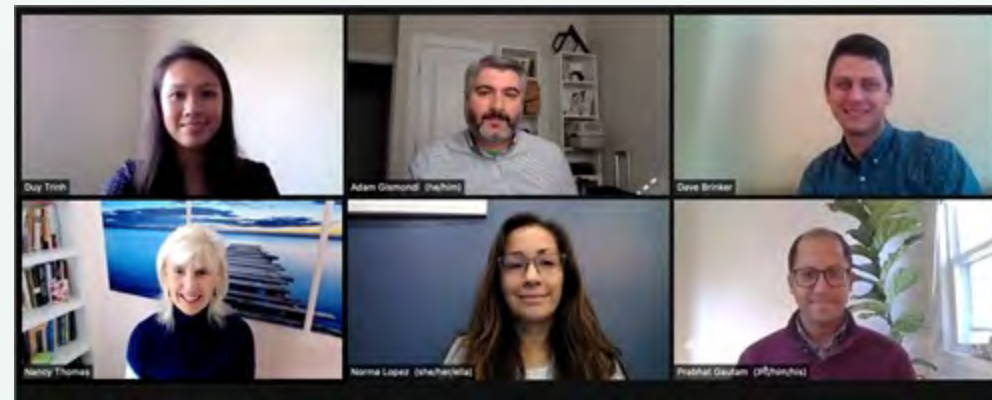
College and university students participated in record-breaking numbers in the 2020 election. In 2016, the Average Institutional Voting Rate was 53%. This year, it jumped to 66%. We encourage you to review Democracy Counts 2020, our most recent national report.

As in past years, we urge you to share this report widely and strategically, particularly with faculty who, in 2020, were often the most consistent communicators with students about ever-changing voting conditions and deadlines. We also urge you to review our recommendations for engaging elections to cultivate a robust and healthy campus climate for political engagement, discourse, equity, and participation: Election Imperatives (2019) and the more recent Election Imperatives: A Time of Physical Distancing and Social Action. Since "pervasive political discussions" and attentiveness to the campus culture around speech and academic freedom are among our top recommendations, we direct you to our discussion guides on talking about your NSLVE report, on free speech and inclusion, and on hot topics, our Making Sense of ... guides.

Finally, we always encourage you to work with us. Help us help you get better data by reaching out. Email IDHE@Tufts.edu for more information. And as always, watch your inbox for our periodic newsletter, IDHE Update, for announcements about upcoming releases and new resources.

Congratulations on engaging your students in the 2020 election. Remember, student political learning is a year-round objective. Elections may be episodic, but student political engagement should not be.

All the Best,
IDHE Team



(Top Row from left) Duy Trinh, Program Administrator; Adam Gismondi, Director of Impact; Dave Brinker, Senior Researcher;
(Bottom Row from left) Nancy Thomas, Director; Norma López, Postdoctoral Scholar; Prabhat Gautam, Data Manager.

We also want to acknowledge and thank **Syed Golam Mohaimen, M.S. student in Data Science at Tufts University** for his contributions toward the creation of these reports.

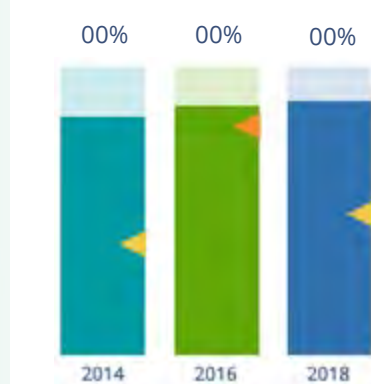
In This Report

This report presents data on student voter participation rates for your campus. The topline counts on page 5 tells you how many students voted, but we encourage you to look carefully at the data on subsequent pages to learn who voted. Data are presented in the form of vessel charts, overlapping donut charts, and tables.

	2014			2018			2014-2018
	Enrolled	Voted	Rate (%)	Enrolled	Voted	Rate (%)	Change (p.p.)
Asian	-	-	-	-	-	-	-
American Indian/ Alaska Native	-	-	-	-	-	-	-
Black	-	-	-	-	-	-	-
Hispanic	-	-	-	-	-	-	-

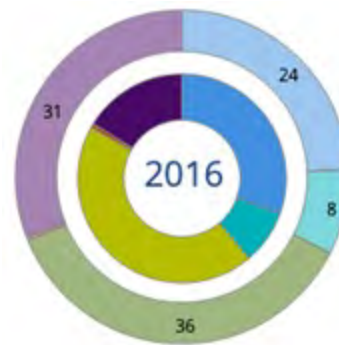
Tables

The tables show, on the left-side columns, the numbers of students and the rates from 2016, 2018, and 2020. On the left-side, percentage point (p.p.) changes between 2016 and 2020. A red down arrow indicates a decrease, a green up arrow indicates an increase, and a yellow arrow pointing to the right indicates no change. "-" in these tables indicates that the data is unavailable/missing, or is available for 10 or less students.



Vessel Chart

This chart shows rates out of 100%, with arrows to the right of each bar representing relevant national averages (medians), which you can find in IDHE's national report Democracy Counts 2020.



Overlapping Donut Chart

This chart is used to show the breakdown of vote method utilization (page 10), with the outer ring showing your campus method utilization and the inner ring showing the national breakdown. These are described in percentages.

Voting, Registration and Yield Rates

YOUR INSTITUTION

72.9%
2020 Voting Rate

+10.8
Change From 2016

ALL INSTITUTIONS

66%
2020 Voting Rate

REGISTRATION RATE

Year	Registration Rate
2016	79.0%
2018	73.3%
2020	85.1%

The **Registration Rate** is the percent of your voting-eligible students who registered to vote.

VOTING RATE OF REGISTERED STUDENTS

Year	Voting Rate of Registered Students
2016	78.6%
2018	59.5%
2020	85.6%

The **Voting Rate of Registered Students** is the percent of registered students who voted on Election Day. We often refer to this as the “yield” rate.

VOTING RATE

Year	Voting Rate
2016	62.1%
2018	43.6%
2020	72.9%

The **Voting Rate** is the percentage of eligible students who voted on Election Day. The voting rate is also the product of the registration and yield rates.

Looking Closer

Voting and Registration Rates

	2016	2018	2020	2016-2020 Change (p.p.)
Total Student Enrollment	11,567	11,630	11,672	↑ 104
(Age under 18/Unknown)	-	-	19	-
(IPEDS estimated non-resident aliens)	478	391	441	↓ -38
(FERPA records blocked)	154	125	93	↓ -61
(Non-Degree Seeking Students)	136	116	234	↑ 98
Total eligible voters	10,796	10,994	10,885	↑ 89
Number of students who registered	8,527	8,058	9,263	↑ 736
Number of students who voted	6,700	4,793	7,931	↑ 1,231
Registration Rate %	79	73	85	↑ 6
Voting Rate of Registered Students %	79	59	86	↑ 7
Voting Rate %	62	44	73	↑ 11

This page provides the numbers we used to calculate your voting, registration, and yield rates. The sub-categories under total student enrollment are the adjustments that we make to account for students who are ineligible to vote due to age or citizenship status. We also exclude, when correctly flagged, students who are not pursuing degrees.

We use IPEDS-derived estimates of NRAs when institutions do not submit non-resident alien status data to NSC, or we cannot verify the accuracy of the reported counts. This estimate is given by "IPEDS estimated non-resident aliens" on this page. If you believe the number of international students reported on this report is incorrect, you can manually adjust your institution's voting rates by using our recalculation tool. <https://id-he.tufts.edu/nslve/nslve-recalculation-tool>.

By Institution Types

2016 Voting Rate for All Institutions

53%

HIGH
82%

LOW
13%

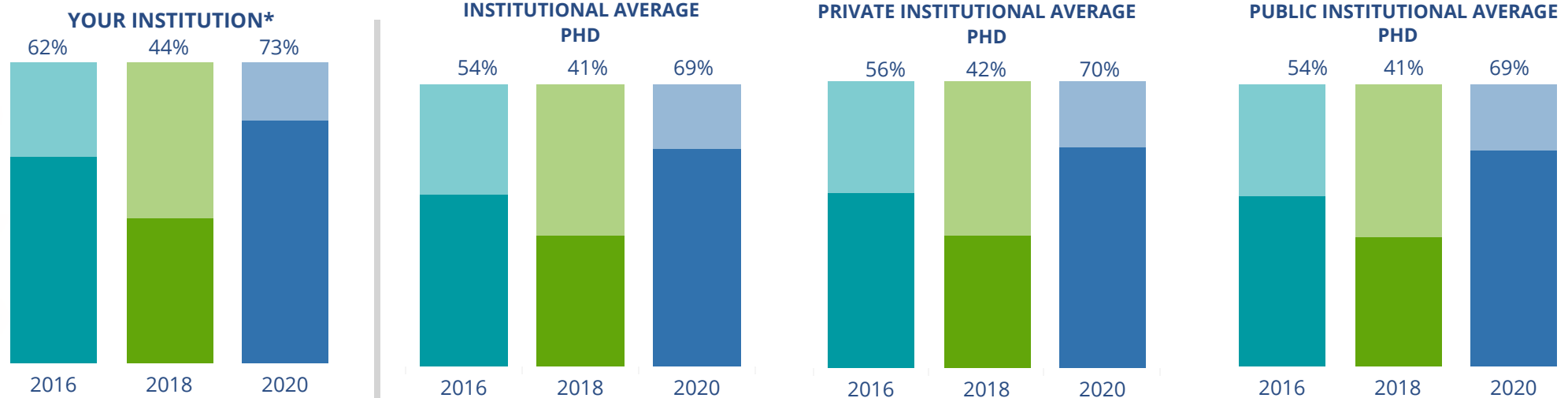
2020 Voting Rate for All Institutions

66%

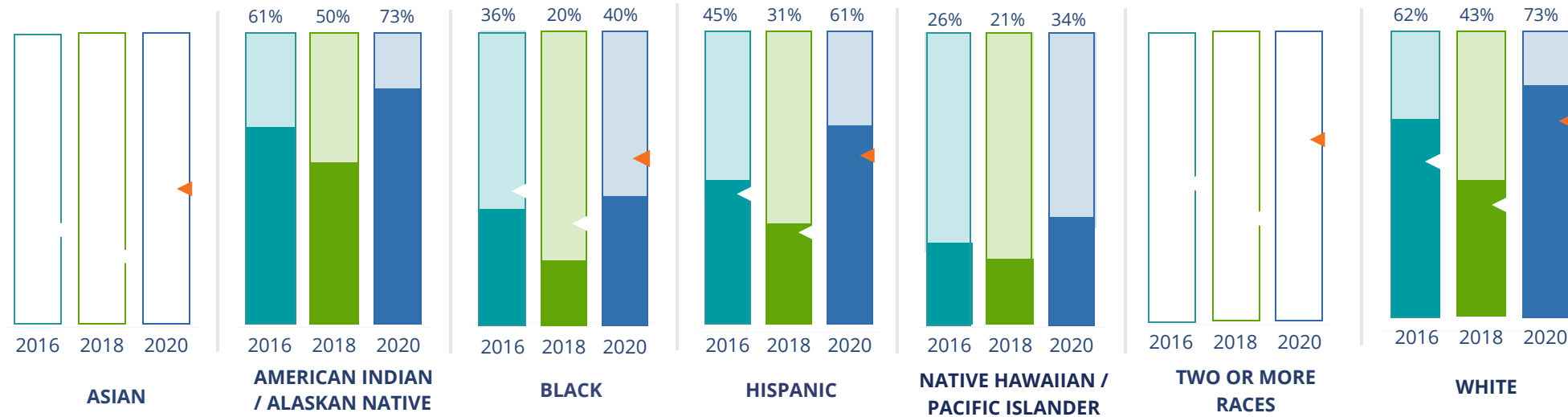
HIGH
89%

LOW
19%

These are estimated voting rates of your institution compared to the average voting rates of similar institutions in NSLVE. *"Your Institution" chart is presented at a different scale.



By Race / Ethnicity



These are estimated voting rates for race / ethnicity groups. These classifications are provided by campuses and are obtained following race reporting procedures* defined by the National Center for Education Statistics of the Institute of Education Sciences (IES). Please see our FAQ for more detail on why we cannot report national benchmark for some of the demographic groups:

<https://tufts.app.box.com/v/idhe-nslve-report-faq>

If you notice unavailable/missing data in this page, it could mean any of the following for your institution: (i) does not report this data; (ii) did not provide this data in past years; (iii) does not separately submit data for one or more of the demographic groups, or (iv) the data is reported for 10 or fewer students.

* <https://nces.ed.gov/ipeds/report-your-data/race-ethnicity-collecting-data-for-reporting-purposes>

Looking Closer

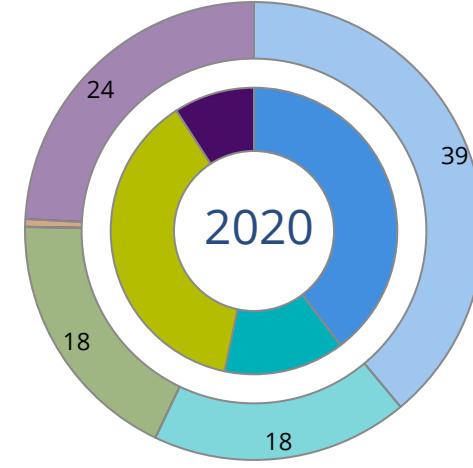
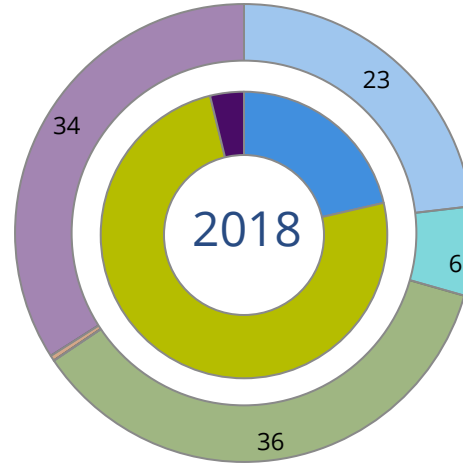
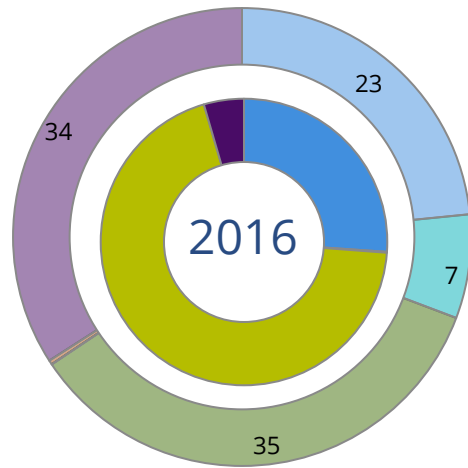
By Race/Ethnicity

This page provides the numbers we used to calculate race / ethnicity group voting rates. We include the counts of students and the change in rates between the two most recent comparable election years. If you notice unavailable/missing data in this page, it could mean any of the following for your institution: (i) does not report this data; (ii) did not provide this data in past years; (iii) does not separately submit data for one or more of the demographic groups, or (iv) the data is reported for 10 or fewer students.

	2016			2018			2020			2016-2020 Change (p.p)
	Enrolled	Voted	Rate	Enrolled	Voted	Rate	Enrolled	Voted	Rate	
Asian	-	-	-	-	-	-	-	-	-	-
American Indian/ Alaska Native	155	95	61	139	70	50	120	88	73	↑ 12
Black	248	89	36	240	49	20	274	110	40	↑ 4
Hispanic	343	153	45	427	133	31	520	318	61	↑ 17
Native Hawaiian/ Pacific Islander	347	89	26	314	65	21	351	119	34	↑ 8
2 or More Races	-	-	-	-	-	-	-	-	-	-
White	9,399	5,848	62	9,693	4,189	43	9,535	6,957	73	↑ 11
Race Unknown	764	426	56	558	287	51	494	339	69	↑ 13

By Voting Method

■ Not-In-Person
 ■ Early Vote
 ■ In-Person
 ■ Other
 ■ Provisional
 ■ Unknown



	2016		2018		2020		2016-2020	
	Voted	Rate	Voted	Rate	Voted	Rate	Change (p.p.)	
Early Vote	-	-	-	-	1,078	14	-	
In-Person on Election Day	4,643	69	3,586	75	2,985	38	-32	↓
Not-In-Person	1,747	26	1,025	21	3,149	40	14	↑
Other	-	-	-	-	-	-	-	
Provisional	-	-	-	-	-	-	-	
Voting Method Unknown	304	5	180	4	718	9	5	↑

These are estimated rates for vote method utilization, the number of students utilizing each method, and the percent of students utilizing each method. Not all U.S. states provide information on vote method; voting method for voter files from these states are classified "Voting Method Unknown." For a list of these states, see our FAQ. <https://idhe.tufts.edu/nsive/nsive-faq#CampusReports>

By Age Group

	2016	2018	2020
18-21	58%	37%	71%
22-24	58%	42%	68%
25-29	57%	50%	65%
30-39	65%	57%	67%
40-49	74%	67%	81%
50+	87%	80%	84%

Voting is habit-forming and young voters will usually continue as voters in subsequent elections.

Also, young voters are more likely to be contacted by campaigns and are visible, and therefore significant, to elected officials. While in the past, we have seen voting rates increase across age groups, in recent cycles, the most significant increases have been among first-time and the youngest voters. Some colleges serve primarily young students, traditionally viewed as students in the 18-21 or 22-24 categories here. Others have much higher numbers of enrolled older undergraduate or graduate students.

Looking Closer

By Age Group

Here, we provide the numbers of students in each age category and the voting rates for each group. These are based on the student's age on the day of the election, as calculated by the National Student Clearinghouse using data from student enrollment records.

	2016			2018			2020			2016-2020 Change (p.p)
	Enrolled	Voted	Rate	Enrolled	Voted	Rate	Enrolled	Voted	Rate	
18-21	7,168	4,157	58	7,304	2,678	37	7,087	5,017	71	↑ 13
22-24	1,824	1,052	58	1,732	736	42	1,801	1,230	68	↑ 11
25-29	909	519	57	859	427	50	934	608	65	↑ 8
30-39	725	471	65	784	447	57	861	573	67	↑ 2
40-49	348	256	74	371	248	67	374	304	81	↑ 8
50+	282	245	87	321	257	80	237	199	84	↓ -3

Looking Closer

By Sex

	2016			2018			2020			2016-2020	
	Enrolled	Voted	Rate	Enrolled	Voted	Rate	Enrolled	Voted	Rate	Change (p.p)	
Female	5,667	3,602	64	5,775	2,711	47	5,629	4,130	73	↑ 10	
Male	5,576	3,089	55	5,581	2,075	37	5,633	3,777	67	↑ 12	

These are estimated voting rates for sex groups and the numbers we used to calculate their voting rates. These classifications are provided by campuses and are obtained following the reporting procedures defined by the National Center for Education Statistics (NCES) of the Institute of Education Sciences (IES). Presently, NCES requires institutions to report students as “Male” or “Female” only.*

If you notice missing data in this page, it could mean any of the following for your institution: (i) does not report this data; (ii) did not provide this data in past years; (iii) does not separately submit data for one or more of the demographic groups, or (iv) the data is reported for 10 or fewer students.

*<https://surveys.nces.ed.gov/ipeds/public/survey-materials/faq?faqid=11>

Looking Closer

By Education Level / Undergraduate Class Year

	2016			2018			2020			2016-2020	
	Enrolled	Voted	Rate (%)	Enrolled	Voted	Rate (%)	Enrolled	Voted	Rate (%)	Change (p.p)	
EDUCATION LEVEL											
Undergraduate	9,086	5,326	59	9,203	3,522	38	8,973	6,271	70	↑	11
Graduate	1,402	864	62	1,546	882	57	1,866	1,325	71	↑	9
Class Unknown	768	510	66	622	389	63	455	335	74	↑	7
CLASS YEAR											
First Year	2,514	54	1,352	2,508	30	742	2,200	65	1,430	↑	11
Second Year	2,163	58	1,255	2,244	35	796	2,156	70	1,519	↑	12
Upper Level	4,414	62	2,722	4,379	45	1,956	4,639	72	3,341	↑	10
ENROLLMENT STATUS											
Full-time	9,945	5,801	58	9,913	3,917	40	9,866	6,856	69	↑	11
Part-time	1,311	899	69	1,458	876	60	1,428	1,075	75	↑	7

These are estimated voting rates by Education Level (undergraduate/graduate), Class Year, and Enrollment Status (full-time/part-time), and the numbers we used to calculate these rates.

If you notice missing data in this page, it could mean any of the following for your institution: (i) does not report this data; (ii) did not provide this data in past years; (iii) does not separately submit data for one or more of the demographic groups, or (iv) the data is reported for 10 or fewer students.

By Field of Study

FIELDS	2016			2018			2020			2016-2020
	Enrolled	Voted	Rate	Enrolled	Voted	Rate	Enrolled	Voted	Rate	Change (p.p)
Area, Ethnic, Cultural, and Gender Studies	-	-	-	12	-	-	-	-	-	-
Biological and Biomedical Sciences	726	425	59	722	304	42	675	468	69	↑ 11
Business, Management, and Marketing	1,249	637	51	1,328	381	29	1,597	1,071	67	↑ 16
Communication and Journalism	365	216	59	351	150	43	341	240	70	↑ 11
Computer and Information Sciences	191	114	60	186	72	39	291	200	69	↑ 9
Education	1,080	711	66	1,171	590	50	1,170	885	76	↑ 10
Engineering and Engineering Technologies	2,009	1,164	58	2,012	757	38	1,978	1,362	69	↑ 11

These are estimated voting rates by field of study, and the numbers we used to calculate the field of study rates. For an explanation of CIP codes, please see our FAQ.* There are roughly 8,000 fields of study among U.S. colleges and universities, so we provide rates for condensed categories.

*<https://tufts.app.box.com/v/idhe-nslve-report-faq>

By Field of Study

FIELDS	2016			2018			2020			2016-2020	
	Enrolled	Voted	Rate	Enrolled	Voted	Rate	Enrolled	Voted	Rate	Change (p.p)	
English Language and Literature	182	121	66	186	96	52	133	100	75	↑	9
Family and Consumer/Human Sciences	202	122	60	198	85	43	164	123	75	↑	15
Foreign Languages, Literatures, and Lingui..	12	-	-	18	-	-	-	-	-		-
Health Professions	627	417	67	666	265	40	581	435	75	↑	8
History	101	59	58	114	60	53	114	87	76	↑	18
Liberal Arts and Sciences, and Humanities	355	199	56	284	114	40	240	141	59	↑	3
Mathematics and Statistics	53	25	47	60	25	42	61	39	64	↑	17
Multi/Interdisciplinary Studies	356	194	54	346	131	38	511	363	71	↑	17
Natural Resources and Conservation	511	299	59	557	268	48	592	422	71	↑	13
Parks, Recreation, Leisure, and Fitness Stu..	109	56	51	102	34	33	75	43	57	↑	6
Philosophy and Religious Studies	27	21	78	20	12	60	21	19	90	↑	13
Physical Sciences	256	154	60	256	113	44	252	167	66	↑	6
Psychology	543	304	56	476	165	35	475	325	68	↑	12
Public Administration and Social Service P..	236	163	69	259	167	64	251	204	81	↑	12

By Field of Study

FIELDS	2016			2018			2020			2016-2020	
	Enrolled	Voted	Rate	Enrolled	Voted	Rate	Enrolled	Voted	Rate	Change (p.p)	
Social Sciences	473	301	64	589	297	50	519	368	71	↑	7
Visual and Performing Arts	164	109	66	151	81	54	172	128	74	↑	8
Unknown	718	485	68	621	386	62	485	358	74	↑	6

About This Report

Thank you for participating in the National Study of Learning, Voting, and Engagement.

Since NSLVE's launch in 2013, nearly 1,200 colleges and universities have signed up to receive their voting rates for the 2012, 2014, 2016, 2018, and 2020 federal elections.

Along with others, your institution's participation in this study has allowed us to build a robust database of over 50 million college student records, about 10 million for each election year, that serve as a foundation for innovative research on college student political learning and engagement in democracy.

NSLVE is a signature initiative of the Institute for Democracy and Higher Education (IDHE) at Tufts University's Jonathan M. Tisch College of Civic Life. The mission of IDHE is to shift college and university priorities and culture to advance political learning, agency, and equity. We achieve our mission through research, resource development, technical assistance, and advocacy.

About the Data

The voter registration and voting rates in this report reflect the percentage of your institution's students who were eligible to vote and who actually voted in the 2016, 2018, and 2020 elections.

These results are based on enrollment records your institution submitted to the National Student Clearinghouse (NSC) and publicly available voting files collected by L2 Political.

Enrollment lists are adjusted by deducting students under age 18 (at the time of the election), people identified as non-degree seeking and those identified by campuses as "nonresident aliens" (NRAs) (the federal government's category for mostly international students). Unfortunately, not all campuses report NRAs to NSC. For those campuses, we use IPEDS to calculate the number of NRA students on each campus and adjust NSC enrollment numbers to estimate the number of students to remove. We also quality check NRA removals by verifying that there is little to no discrepancy between the number of international students reported by the campus to IPEDS and to NSC. We cannot adjust subgroup analyses absent identification of NRAs verified by the process above. We welcome closer partnerships with individual colleges and universities to provide more accurate rates. For more on the data and the matching process, see our FAQ on Campus Reports.

University of Maine

Thank you for the work you do to improve your students' political learning and engagement. We hope that you find your NSLVE report useful. For up-to-date news on NSLVE data, resources, and to sign up for our newsletter visit: <https://idhe.tufts.edu>.

References: IDHE encourages report recipients to share this report as broadly as possible, including posting it on the college or university's website. When doing so, please use the following citation: Institute for Democracy & Higher Education: National Study of Learning, Voting and Engagement. (2021). 2016, 2018, and 2020 report for _____ [name of institution]. Medford, MA.



Barnum Hall
163 Packard Ave.
Medford, MA 02155

tischcollege@tufts.edu
617.627.3453



Institute for Democracy & Higher Education:
National Study of Learning, Voting, and Engagement
Barnum Hall, Medford, MA 02155

Follow Us on Twitter: @TuftsIDHE
NSLVE@tufts.edu
617.627.0620