



October 2021

Student Voting Rates for University Of Houston-Clear Lake

2020 NSLVE Campus Report

October 2021

Dear Colleagues:

We are pleased to send this tailored report containing your students' voting rates for 2020. This report contains three years of relevant topline data: 2016, 2018, and 2020. As always, we disaggregate the data so you can better identify and address gaps in participation.

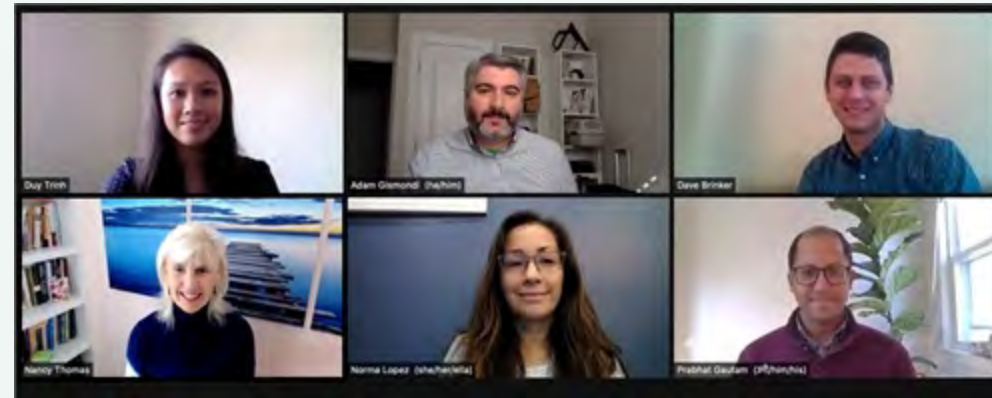
College and university students participated in record-breaking numbers in the 2020 election. In 2016, the Average Institutional Voting Rate was 53%. This year, it jumped to 66%. We encourage you to review Democracy Counts 2020, our most recent national report.

As in past years, we urge you to share this report widely and strategically, particularly with faculty who, in 2020, were often the most consistent communicators with students about ever-changing voting conditions and deadlines. We also urge you to review our recommendations for engaging elections to cultivate a robust and healthy campus climate for political engagement, discourse, equity, and participation: Election Imperatives (2019) and the more recent Election Imperatives: A Time of Physical Distancing and Social Action. Since "pervasive political discussions" and attentiveness to the campus culture around speech and academic freedom are among our top recommendations, we direct you to our discussion guides on talking about your NSLVE report, on free speech and inclusion, and on hot topics, our Making Sense of ... guides.

Finally, we always encourage you to work with us. Help us help you get better data by reaching out. Email IDHE@Tufts.edu for more information. And as always, watch your inbox for our periodic newsletter, IDHE Update, for announcements about upcoming releases and new resources.

Congratulations on engaging your students in the 2020 election. Remember, student political learning is a year-round objective. Elections may be episodic, but student political engagement should not be.

All the Best,
IDHE Team



(Top Row from left) Duy Trinh, Program Administrator; Adam Gismondi, Director of Impact; Dave Brinker, Senior Researcher;
(Bottom Row from left) Nancy Thomas, Director; Norma López, Postdoctoral Scholar; Prabhat Gautam, Data Manager.

We also want to acknowledge and thank **Syed Golam Mohaimen, M.S. student in Data Science at Tufts University** for his contributions toward the creation of these reports.

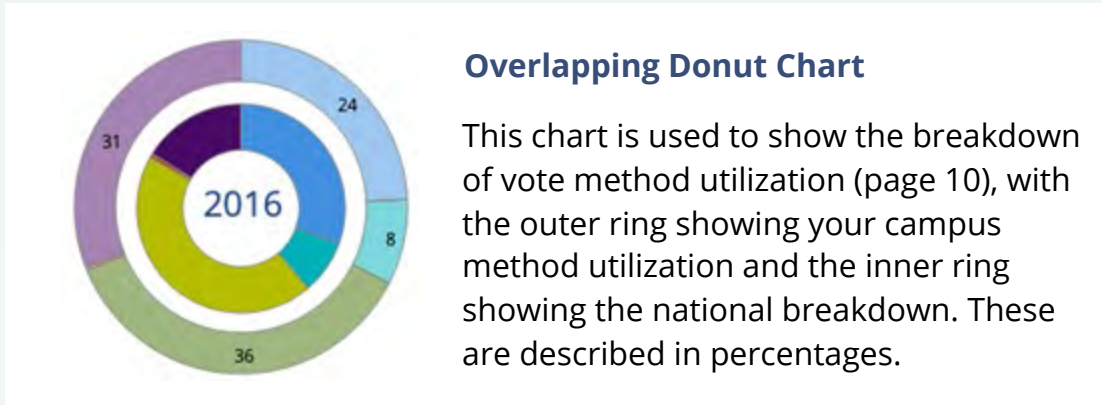
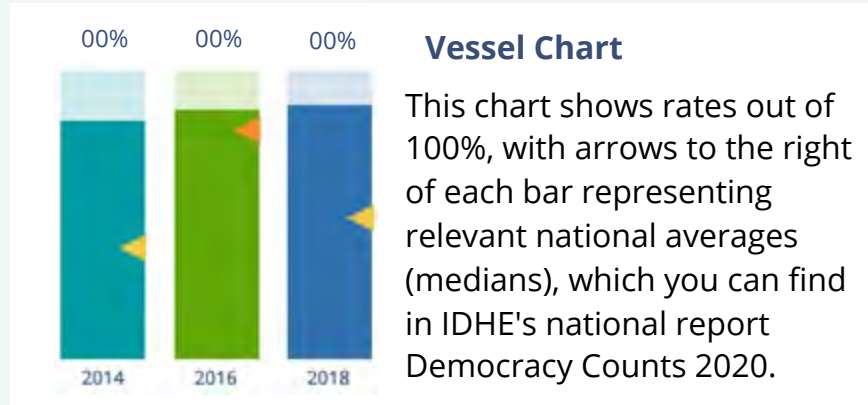
In This Report

This report presents data on student voter participation rates for your campus. The topline counts on page 5 tells you how many students voted, but we encourage you to look carefully at the data on subsequent pages to learn who voted. Data are presented in the form of vessel charts, overlapping donut charts, and tables.

	2014			2018			2014-2018
	Enrolled	Voted	Rate (%)	Enrolled	Voted	Rate (%)	Change (p.p.)
Asian	-	-	-	-	-	-	-
American Indian/ Alaska Native	-	-	-	-	-	-	-
Black	-	-	-	-	-	-	-
Hispanic	-	-	-	-	-	-	-

Tables

The tables show, on the left-side columns, the numbers of students and the rates from 2016, 2018, and 2020. On the left-side, percentage point (p.p.) changes between 2016 and 2020. A red down arrow indicates a decrease, a green up arrow indicates an increase, and a yellow arrow pointing to the right indicates no change. "-" in these tables indicates that the data is unavailable/missing, or is available for 10 or less students.



Voting, Registration and Yield Rates

YOUR INSTITUTION

62.8%
2020 Voting Rate

+12.7
Change From 2016

ALL INSTITUTIONS

66%
2020 Voting Rate

REGISTRATION RATE

Year	Registration Rate
2016	75.7%
2018	79.8%
2020	81.1%

The **Registration Rate** is the percent of your voting-eligible students who registered to vote.

VOTING RATE OF REGISTERED STUDENTS

Year	Voting Rate of Registered Students
2016	66.2%
2018	60.6%
2020	77.4%

The **Voting Rate of Registered Students** is the percent of registered students who voted on Election Day. We often refer to this as the “yield” rate.

VOTING RATE

Year	Voting Rate
2016	50.1%
2018	48.3%
2020	62.8%

The **Voting Rate** is the percentage of eligible students who voted on Election Day. The voting rate is also the product of the registration and yield rates.

Looking Closer

Voting and Registration Rates

	2016	2018	2020	2016-2020 Change (p.p.)
Total Student Enrollment	8,369	8,742	8,946	↑ 577
(Age under 18/Unknown)	-	-	-	-
(NSC reported non-resident aliens)	1,256	520	349	↓ -907
(FERPA records blocked)	97	96	83	↓ -14
(Non-Degree Seeking Students)	64	52	53	↓ -11
Total eligible voters	6,952	8,073	8,461	↑ 1,509
Number of students who registered	5,260	6,440	6,865	↑ 1,605
Number of students who voted	3,482	3,901	5,313	↑ 1,831
Registration Rate %	76	80	81	↑ 5
Voting Rate of Registered Students %	66	61	77	↑ 11
Voting Rate %	50	48	63	↑ 13

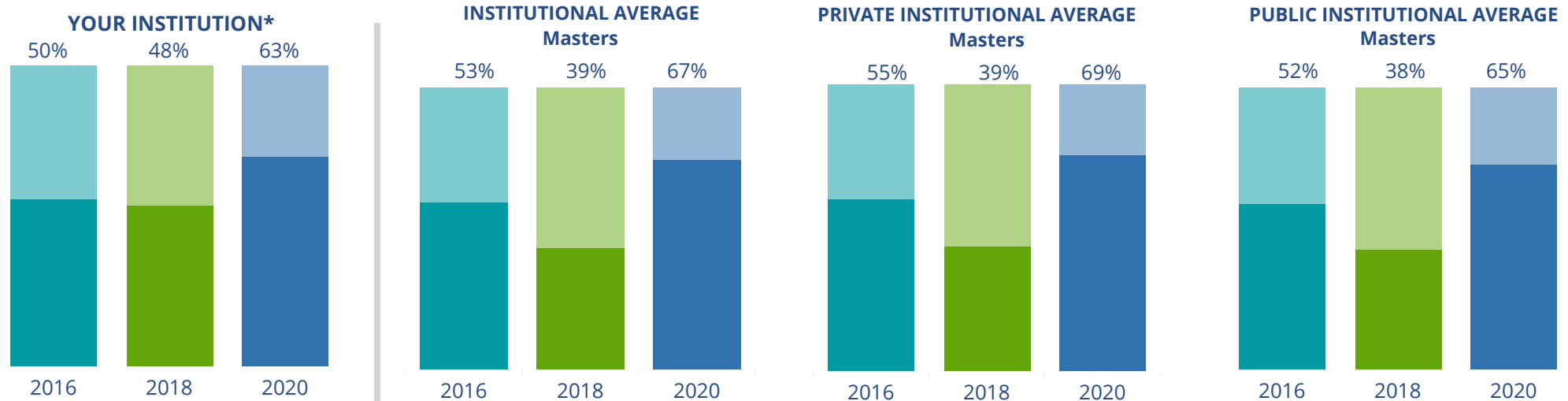
This page provides the numbers we used to calculate your voting, registration, and yield rates. The sub-categories under total student enrollment are the adjustments that we make to account for students who are ineligible to vote due to age or citizenship status. We also exclude, when correctly flagged, students who are not pursuing degrees.

We have removed non-resident aliens (international students) based on your institution's enrollment submission to the National Student Clearinghouse. This is indicated by "NSC reported non-resident aliens" on this page.

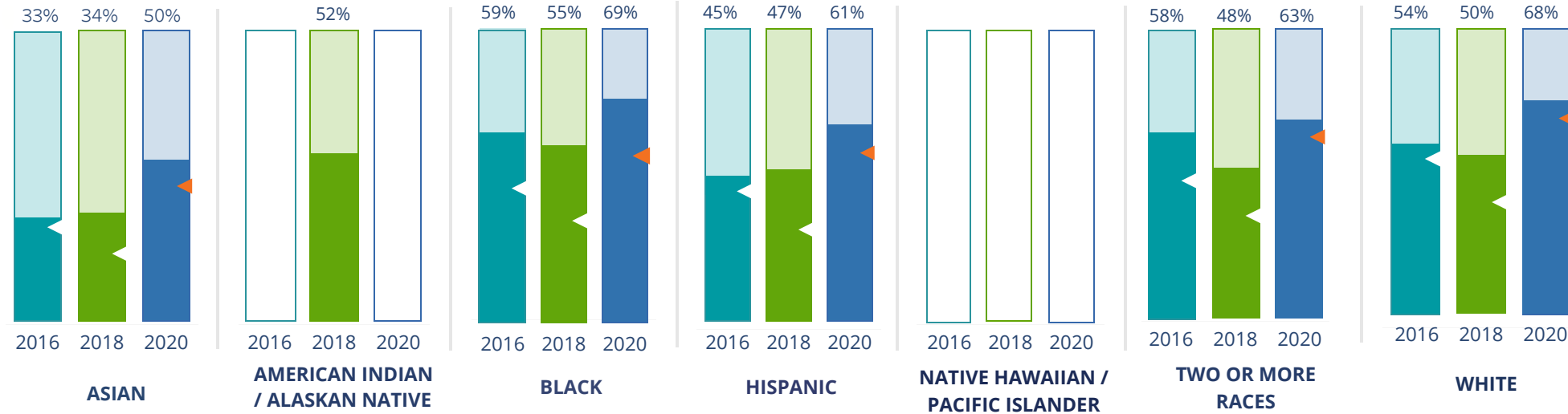
By Institution Types



These are estimated voting rates of your institution compared to the average voting rates of similar institutions in NSLVE. *"Your Institution" chart is presented at a different scale.



By Race / Ethnicity



These are estimated voting rates for race / ethnicity groups. These classifications are provided by campuses and are obtained following race reporting procedures* defined by the National Center for Education Statistics of the Institute of Education Sciences (IES). Please see our FAQ for more detail on why we cannot report national benchmark for some of the demographic groups:

<https://tufts.app.box.com/v/idhe-nslve-report-faq>

If you notice unavailable/missing data in this page, it could mean any of the following for your institution: (i) does not report this data; (ii) did not provide this data in past years; (iii) does not separately submit data for one or more of the demographic groups, or (iv) the data is reported for 10 or fewer students.

* <https://nces.ed.gov/ipeds/report-your-data/race-ethnicity-collecting-data-for-reporting-purposes>

Looking Closer

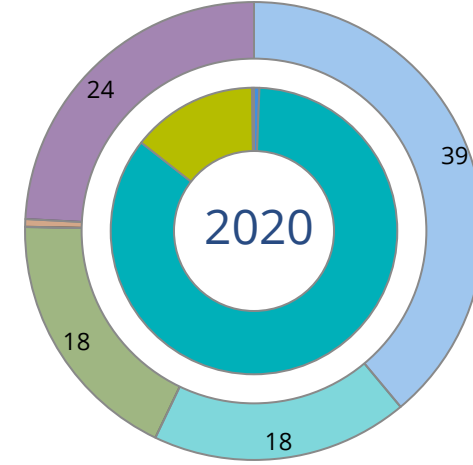
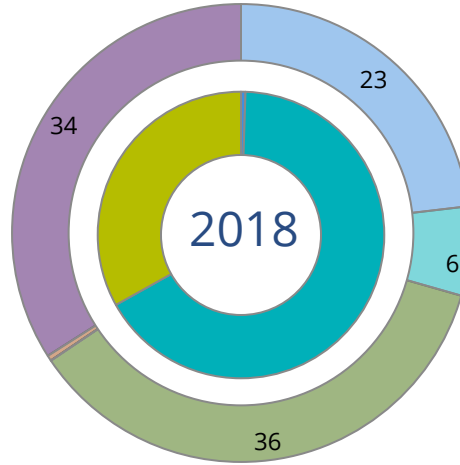
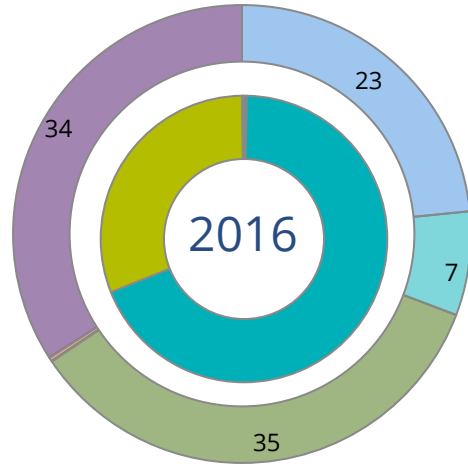
By Race/Ethnicity

This page provides the numbers we used to calculate race / ethnicity group voting rates. We include the counts of students and the change in rates between the two most recent comparable election years. If you notice unavailable/missing data in this page, it could mean any of the following for your institution: (i) does not report this data; (ii) did not provide this data in past years; (iii) does not separately submit data for one or more of the demographic groups, or (iv) the data is reported for 10 or fewer students.

	2016			2018			2020			2016-2020 Change (p.p)
	Enrolled	Voted	Rate	Enrolled	Voted	Rate	Enrolled	Voted	Rate	
Asian	541	176	33	663	224	34	755	378	50	↑ 18
American Indian/ Alaska Native	17	-	-	23	12	52	-	-	-	-
Black	663	390	59	788	430	55	771	532	69	↑ 10
Hispanic	2,468	1,107	45	3,033	1,431	47	3,484	2,115	61	↑ 16
Native Hawaiian/ Pacific Islander	-	-	-	-	-	-	-	-	-	-
2 or More Races	197	115	58	248	118	48	286	179	63	↑ 4
White	3,079	1,654	54	3,289	1,651	50	3,065	2,069	68	↑ 14
Race Unknown	1,222	29	2	546	35	6	85	31	36	↑ 34

By Voting Method

■ Not-In-Person
 ■ Early Vote
 ■ In-Person
 ■ Other
 ■ Provisional
 ■ Unknown



	2016		2018		2020		2016-2020	
	Voted	Rate	Voted	Rate	Voted	Rate	Change (p.p.)	
Early Vote	2,394	69	2,589	66	4,516	85	16	↑
In-Person on Election Day	1,075	31	1,293	33	756	14	-17	↓
Not-In-Person	-	-	19	1	33	1	-	
Other	-	-	-	-	-	-	-	
Provisional	-	-	-	-	-	-	-	
Voting Method Unknown	-	-	-	-	-	-	-	

These are estimated rates for vote method utilization, the number of students utilizing each method, and the percent of students utilizing each method. Not all U.S. states provide information on vote method; voting method for voter files from these states are classified "Voting Method Unknown." For a list of these states, see our FAQ. <https://idhe.tufts.edu/nsive/nsive-faq#CampusReports>

By Age Group

	2016	2018	2020
18-21	46%	48%	62%
22-24	32%	41%	61%
25-29	38%	41%	59%
30-39	51%	48%	66%
40-49	62%	57%	73%
50+	67%	63%	71%

Voting is habit-forming and young voters will usually continue as voters in subsequent elections.

Also, young voters are more likely to be contacted by campaigns and are visible, and therefore significant, to elected officials. While in the past, we have seen voting rates increase across age groups, in recent cycles, the most significant increases have been among first-time and the youngest voters. Some colleges serve primarily young students, traditionally viewed as students in the 18-21 or 22-24 categories here. Others have much higher numbers of enrolled older undergraduate or graduate students.

Looking Closer

By Age Group

Here, we provide the numbers of students in each age category and the voting rates for each group. These are based on the student's age on the day of the election, as calculated by the National Student Clearinghouse using data from student enrollment records.

	2016			2018			2020			2016-2020 Change (p.p)
	Enrolled	Voted	Rate	Enrolled	Voted	Rate	Enrolled	Voted	Rate	
18-21	1,267	579	46	1,551	738	48	1,782	1,106	62	↑ 16
22-24	2,422	772	32	2,297	945	41	2,252	1,376	61	↑ 29
25-29	2,176	835	38	2,224	912	41	2,006	1,181	59	↑ 21
30-39	1,478	750	51	1,638	792	48	1,530	1,008	66	↑ 15
40-49	591	369	62	656	373	57	659	478	73	↑ 10
50+	263	177	67	224	141	63	232	164	71	↑ 3

Looking Closer

By Sex

	2016			2018			2020			2016-2020	
	Enrolled	Voted	Rate	Enrolled	Voted	Rate	Enrolled	Voted	Rate	Change (p.p)	
Female	5,034	2,329	46	5,381	2,527	47	5,437	3,492	64	↑ 18	
Male	3,163	1,153	36	3,209	1,374	43	3,024	1,821	60	↑ 24	

These are estimated voting rates for sex groups and the numbers we used to calculate their voting rates. These classifications are provided by campuses and are obtained following the reporting procedures defined by the National Center for Education Statistics (NCES) of the Institute of Education Sciences (IES). Presently, NCES requires institutions to report students as “Male” or “Female” only.*

If you notice missing data in this page, it could mean any of the following for your institution: (i) does not report this data; (ii) did not provide this data in past years; (iii) does not separately submit data for one or more of the demographic groups, or (iv) the data is reported for 10 or fewer students.

*<https://surveys.nces.ed.gov/ipeds/public/survey-materials/faq?faqid=11>

Looking Closer

By Education Level / Undergraduate Class Year

	2016			2018			2020			2016-2020	
	Enrolled	Voted	Rate (%)	Enrolled	Voted	Rate (%)	Enrolled	Voted	Rate (%)	Change (p.p)	
EDUCATION LEVEL											
Undergraduate	5,458	2,541	47	6,123	2,783	45	6,385	3,881	61	↑	14
Graduate	2,614	859	33	2,359	1,061	45	2,009	1,391	69	↑	36
Class Unknown	125	82	66	108	57	53	67	41	61	↓	-4
CLASS YEAR											
First Year	167	44	73	311	47	145	280	56	158	↑	13
Second Year	367	46	168	2,809	44	1,245	2,307	59	1,350	↑	13
Upper Level	4,794	47	2,231	2,871	46	1,329	3,677	62	2,296	↑	16
ENROLLMENT STATUS											
Full-time	4,318	1,655	38	4,380	1,944	44	4,321	2,732	63	↑	25
Part-time	3,879	1,827	47	4,210	1,957	46	4,140	2,581	62	↑	15

These are estimated voting rates by Education Level (undergraduate/graduate), Class Year, and Enrollment Status (full-time/part-time), and the numbers we used to calculate these rates.

If you notice missing data in this page, it could mean any of the following for your institution: (i) does not report this data; (ii) did not provide this data in past years; (iii) does not separately submit data for one or more of the demographic groups, or (iv) the data is reported for 10 or fewer students.

By Field of Study

FIELDS	2016			2018			2020			2016-2020 RateChange (p.p)
	Enrolled	Voted	Rate	Enrolled	Voted	Rate	Enrolled	Voted	Rate	
Biological and Biomedical Sciences	444	204	46	532	230	43	614	346	56	↑ 10
Business, Management, and Marketing	1,692	760	45	2,055	920	45	1,972	1,228	62	↑ 17
Communication and Journalism	154	96	62	172	101	59	143	100	70	↑ 8
Communications Technologies/Technicians	38	18	47	21	12	57	18	12	67	↑ 19
Computer and Information Sciences	713	139	19	630	199	32	527	314	60	↑ 40
Education	397	235	59	336	210	63	301	242	80	↑ 21
Engineering and Engineering Technologies	717	82	11	456	143	31	569	323	57	↑ 45

These are estimated voting rates by field of study, and the numbers we used to calculate the field of study rates. For an explanation of CIP codes, please see our FAQ.* There are roughly 8,000 fields of study among U.S. colleges and universities, so we provide rates for condensed categories.

*<https://tufts.app.box.com/v/idhe-nslve-report-faq>

By Field of Study

FIELDS	2016			2018			2020			2016-2020	
	Enrolled	Voted	Rate	Enrolled	Voted	Rate	Enrolled	Voted	Rate	Change (p.p)	
English Language and Literature	112	66	59	141	77	55	122	83	68	↑	9
Family and Consumer/Human Sciences	-	-	-	13	-	-	22	16	73		-
Health Professions	408	174	43	635	284	45	557	375	67	↑	25
History	140	81	58	144	79	55	159	114	72	↑	14
Legal Professions and Studies	76	39	51	72	36	50	60	43	72	↑	20
Liberal Arts and Sciences, and Humanities	88	40	45	100	35	35	106	40	38	↓	-8
Mathematics and Statistics	155	65	42	177	77	44	143	91	64	↑	22
Multi/Interdisciplinary Studies	1,186	559	47	1,198	551	46	1,209	706	58	↑	11
Natural Resources and Conservation	183	72	39	124	71	57	116	85	73	↑	34
Parks, Recreation, Leisure, and Fitness Stu..	264	106	40	258	100	39	232	141	61	↑	21
Physical Sciences	125	60	48	134	65	49	109	72	66	↑	18
Psychology	613	296	48	617	300	49	685	429	63	↑	14
Public Administration and Social Service P..	105	62	59	139	74	53	168	125	74	↑	15

By Field of Study

FIELDS	2016			2018			2020			2016-2020	
	Enrolled	Voted	Rate	Enrolled	Voted	Rate	Enrolled	Voted	Rate	Change (p.p)	
Social Sciences	283	155	55	305	151	50	310	210	68	↑	13
Visual and Performing Arts	156	76	49	162	79	49	204	142	70	↑	21
Unknown	111	71	64	106	57	54	67	41	61	↓	-3

About This Report

Thank you for participating in the National Study of Learning, Voting, and Engagement.

Since NSLVE's launch in 2013, nearly 1,200 colleges and universities have signed up to receive their voting rates for the 2012, 2014, 2016, 2018, and 2020 federal elections.

Along with others, your institution's participation in this study has allowed us to build a robust database of over 50 million college student records, about 10 million for each election year, that serve as a foundation for innovative research on college student political learning and engagement in democracy.

NSLVE is a signature initiative of the Institute for Democracy and Higher Education (IDHE) at Tufts University's Jonathan M. Tisch College of Civic Life. The mission of IDHE is to shift college and university priorities and culture to advance political learning, agency, and equity. We achieve our mission through research, resource development, technical assistance, and advocacy.

About the Data

The voter registration and voting rates in this report reflect the percentage of your institution's students who were eligible to vote and who actually voted in the 2016, 2018, and 2020 elections.

These results are based on enrollment records your institution submitted to the National Student Clearinghouse (NSC) and publicly available voting files collected by L2 Political.

Enrollment lists are adjusted by deducting students under age 18 (at the time of the election), people identified as non-degree seeking and those identified by campuses as "nonresident aliens" (NRAs) (the federal government's category for mostly international students). Unfortunately, not all campuses report NRAs to NSC. For those campuses, we use IPEDS to calculate the number of NRA students on each campus and adjust NSC enrollment numbers to estimate the number of students to remove. We also quality check NRA removals by verifying that there is little to no discrepancy between the number of international students reported by the campus to IPEDS and to NSC. We cannot adjust subgroup analyses absent identification of NRAs verified by the process above. We welcome closer partnerships with individual colleges and universities to provide more accurate rates. For more on the data and the matching process, see our FAQ on Campus Reports.

University Of Houston-Clear Lake

Thank you for the work you do to improve your students' political learning and engagement. We hope that you find your NSLVE report useful. For up-to-date news on NSLVE data, resources, and to sign up for our newsletter visit: <https://idhe.tufts.edu>.

References: IDHE encourages report recipients to share this report as broadly as possible, including posting it on the college or university's website. When doing so, please use the following citation: Institute for Democracy & Higher Education: National Study of Learning, Voting and Engagement. (2021). 2016, 2018, and 2020 report for _____ [name of institution]. Medford, MA.



Barnum Hall
163 Packard Ave.
Medford, MA 02155

tischcollege@tufts.edu
617.627.3453



Institute for Democracy & Higher Education:
National Study of Learning, Voting, and Engagement
Barnum Hall, Medford, MA 02155

Follow Us on Twitter: @TuftsIDHE
NSLVE@tufts.edu
617.627.0620