



October 2021

# Student Voting Rates for University Of Georgia

## 2020 NSLVE Campus Report

**October 2021**

**Dear Colleagues:**

We are pleased to send this tailored report containing your students' voting rates for 2020. This report contains three years of relevant topline data: 2016, 2018, and 2020. As always, we disaggregate the data so you can better identify and address gaps in participation.

College and university students participated in record-breaking numbers in the 2020 election. In 2016, the Average Institutional Voting Rate was 53%. This year, it jumped to 66%. We encourage you to review Democracy Counts 2020, our most recent national report.

As in past years, we urge you to share this report widely and strategically, particularly with faculty who, in 2020, were often the most consistent communicators with students about ever-changing voting conditions and deadlines. We also urge you to review our recommendations for engaging elections to cultivate a robust and healthy campus climate for political engagement, discourse, equity, and participation: Election Imperatives (2019) and the more recent Election Imperatives: A Time of Physical Distancing and Social Action. Since "pervasive political discussions" and attentiveness to the campus culture around speech and academic freedom are among our top recommendations, we direct you to our discussion guides on talking about your NSLVE report, on free speech and inclusion, and on hot topics, our Making Sense of ... guides.

Finally, we always encourage you to work with us. Help us help you get better data by reaching out. Email [IDHE@Tufts.edu](mailto:IDHE@Tufts.edu) for more information. And as always, watch your inbox for our periodic newsletter, IDHE Update, for announcements about upcoming releases and new resources.

Congratulations on engaging your students in the 2020 election. Remember, student political learning is a year-round objective. Elections may be episodic, but student political engagement should not be.

All the Best,  
IDHE Team



**(Top Row from left) Duy Trinh, Program Administrator; Adam Gismondi, Director of Impact; Dave Brinker, Senior Researcher;**  
**(Bottom Row from left) Nancy Thomas, Director; Norma López, Postdoctoral Scholar; Prabhat Gautam, Data Manager.**

We also want to acknowledge and thank **Syed Golam Mohaimen, M.S. student in Data Science at Tufts University** for his contributions toward the creation of these reports.

# In This Report

This report presents data on student voter participation rates for your campus. The topline counts on page 5 tells you how many students voted, but we encourage you to look carefully at the data on subsequent pages to learn who voted. Data are presented in the form of vessel charts, overlapping donut charts, and tables.



Vessel Chart

This chart shows rates out of 100%, with arrows to the right of each bar representing relevant national averages (medians), which you can find in IDHE's national report Democracy Counts 2020.

	2014			2018			2014-2018
	Enrolled	Voted	Rate (%)	Enrolled	Voted	Rate (%)	Change (p.p.)
Asian	-	-	-	-	-	-	-
American Indian/ Alaska Native	-	-	-	-	-	-	-
Black	-	-	-	-	-	-	-
Hispanic	-	-	-	-	-	-	-

## Tables

The tables show, on the left-side columns, the numbers of students and the rates from 2016, 2018, and 2020. On the left-side, percentage point (p.p.) changes between 2016 and 2020. A red down arrow indicates a decrease, a green up arrow indicates an increase, and a yellow arrow pointing to the right indicates no change. "-" in these tables indicates that the data is unavailable/missing, or is available for 10 or less students.



Overlapping Donut Chart

This chart is used to show the breakdown of vote method utilization (page 10), with the outer ring showing your campus method utilization and the inner ring showing the national breakdown. These are described in percentages.

# Voting, Registration and Yield Rates

## YOUR INSTITUTION

77.0%

2020 Voting Rate

+17.6

Change From 2016

## ALL INSTITUTIONS

66%

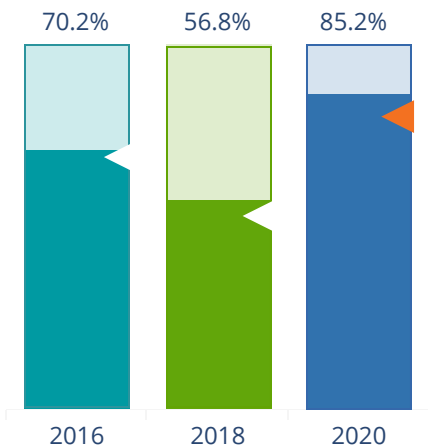
2020 Voting Rate

## REGISTRATION RATE



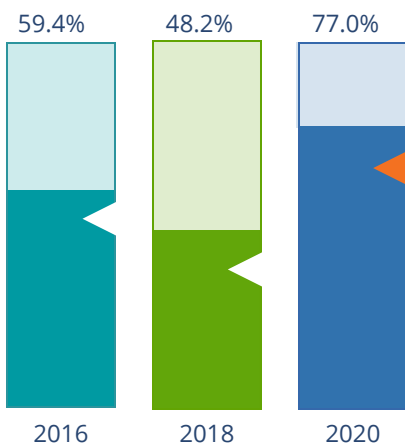
The **Registration Rate** is the percent of your voting-eligible students who registered to vote.

## VOTING RATE OF REGISTERED STUDENTS



The **Voting Rate of Registered Students** is the percent of registered students who voted on Election Day. We often refer to this as the “yield” rate.

## VOTING RATE



The **Voting Rate** is the percentage of eligible students who voted on Election Day. The voting rate is also the product of the registration and yield rates.

# Looking Closer

## Voting and Registration Rates

	2016	2018	2020	2016-2020 Change (p.p.)
Total Student Enrollment	36,038	38,103	38,749	↑ 2,711
(Age under 18/Unknown)	–	–	–	–
(IPEDS estimated non-resident aliens)	1,832	1,961	1,711	↓ -121
(FERPA records blocked)	803	299	161	↓ -642
(Non-Degree Seeking Students)	89	109	135	↑ 46
Total eligible voters	33,314	35,734	36,742	↑ 3,429
Number of students who registered	28,155	30,332	33,209	↑ 5,054
Number of students who voted	19,776	17,226	28,295	↑ 8,519
Registration Rate %	85	85	90	↑ 6
Voting Rate of Registered Students %	70	57	85	↑ 15
Voting Rate %	59	48	77	↑ 18

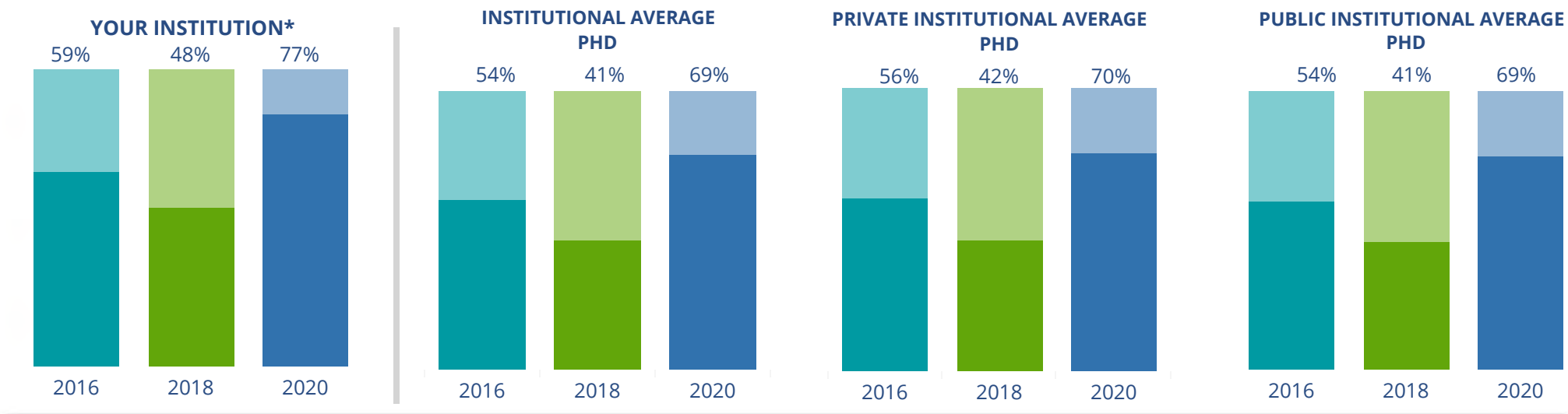
**This page provides the numbers we used to calculate your voting, registration, and yield rates.** The sub-categories under total student enrollment are the adjustments that we make to account for students who are ineligible to vote due to age or citizenship status. We also exclude, when correctly flagged, students who are not pursuing degrees.

We use IPEDS-derived estimates of NRAs when institutions do not submit non-resident alien status data to NSC, or we cannot verify the accuracy of the reported counts. This estimate is given by "IPEDS estimated non-resident aliens" on this page. If you believe the number of international students reported on this report is incorrect, you can manually adjust your institution's voting rates by using our recalculation tool. <https://id-he.tufts.edu/nsive/nsive-recalculation-tool>.

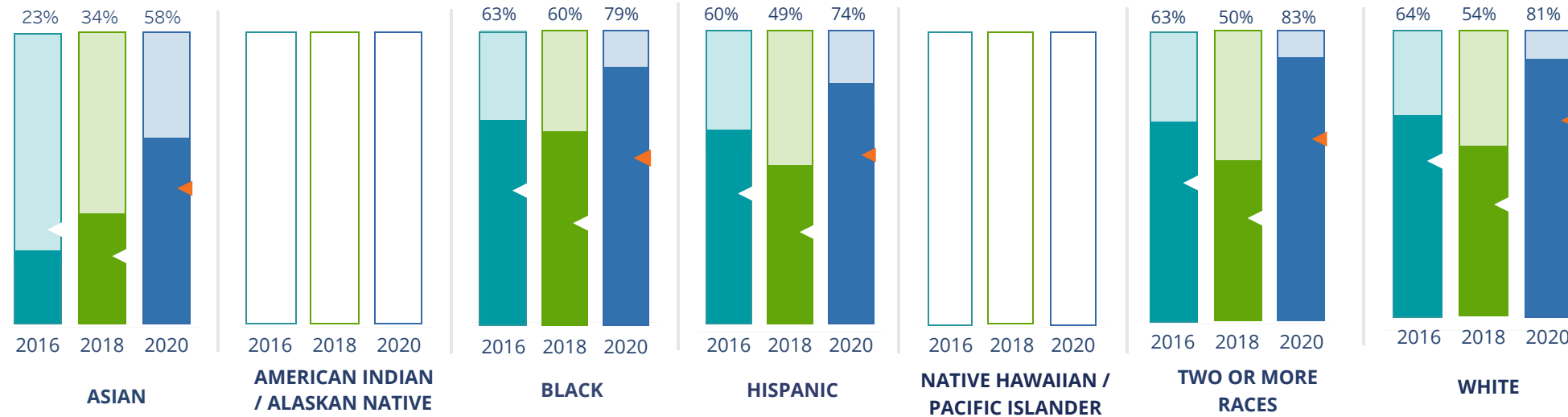
# By Institution Types



These are estimated voting rates of your institution compared to the average voting rates of similar institutions in NSLVE. \*"Your Institution" chart is presented at a different scale.



## By Race / Ethnicity



**These are estimated voting rates for race / ethnicity groups.** These classifications are provided by campuses and are obtained following race reporting procedures\* defined by the National Center for Education Statistics of the Institute of Education Sciences (IES). Please see our FAQ for more detail on why we cannot report national benchmark for some of the demographic groups:

<https://tufts.app.box.com/v/idhe-nsive-report-faq>

If you notice unavailable/missing data in this page, it could mean any of the following for your institution: (i) does not report this data; (ii) did not provide this data in past years; (iii) does not separately submit data for one or more of the demographic groups, or (iv) the data is reported for 10 or fewer students.

\* <https://nces.ed.gov/ipeds/report-your-data/race-ethnicity-collecting-data-for-reporting-purposes>



# Looking Closer

## By Race/Ethnicity

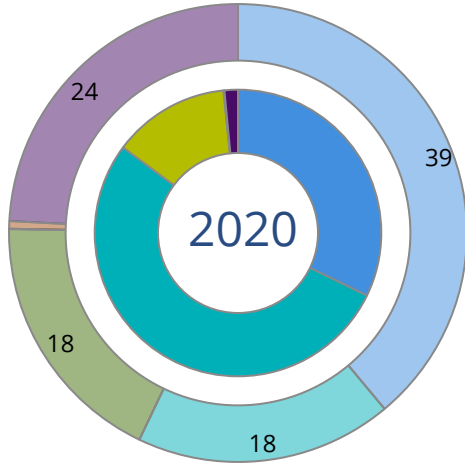
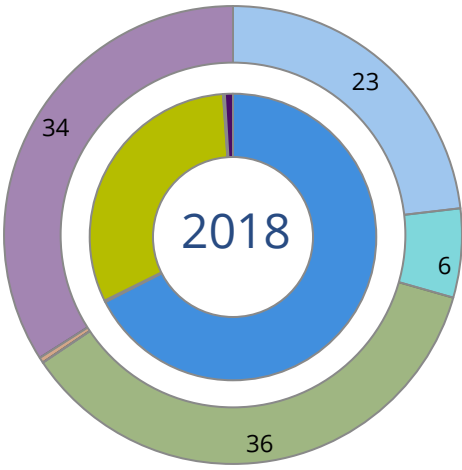
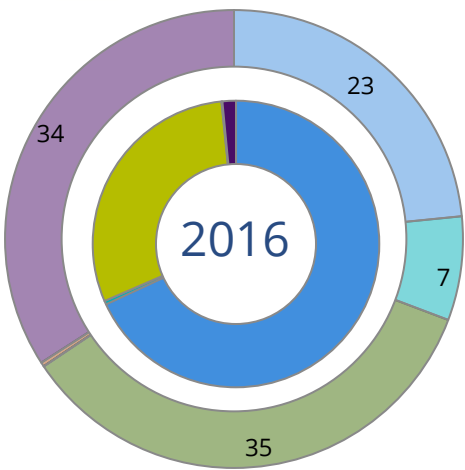
**This page provides the numbers we used to calculate race / ethnicity group voting rates.** We include the counts of students and the change in rates between the two most recent comparable election years. If you notice unavailable/missing data in this page, it could mean any of the following for your institution: (i) does not report this data; (ii) did not provide this data in past years; (iii) does not separately submit data for one or more of the demographic groups, or (iv) the data is reported for 10 or fewer students.

	2016			2018			2020			2016-2020 Change (p.p)
	Enrolled	Voted	Rate	Enrolled	Voted	Rate	Enrolled	Voted	Rate	
Asian	66	15	23	1,033	354	34	191	110	58	↑ 35
American Indian/ Alaska Native	-	-	-	11	-	-	-	-	-	-
Black	57	36	63	866	516	60	208	165	79	↑ 16
Hispanic	25	15	60	525	258	49	85	63	74	↑ 14
Native Hawaiian/ Pacific Islander	-	-	-	-	-	-	-	-	-	-
2 or More Races	24	15	63	380	191	50	69	57	83	↑ 20
White	488	311	64	6,983	3,765	54	1,347	1,091	81	↑ 17
Race Unknown	34,476	19,384	56	27,879	12,135	44	36,542	26,809	73	↑ 17



# By Voting Method

Not-In-Person Early Vote In-Person Other Provisional Unknown



	2016		2018		2020		2016-2020	
	Voted	Rate	Voted	Rate	Voted	Rate	Change (p.p.)	
Early Vote	76	0	36	0	14,988	53	53	↑
In-Person on Election Day	5,914	30	5,382	31	3,736	13	-17	↓
Not-In-Person	13,464	68	11,619	68	9,111	32	-36	↓
Other	-	-	-	-	-	-	-	
Provisional	11	0	30	0	18	0	0	→
Voting Method Unknown	311	2	159	1	442	2	0	→

These are estimated rates for vote method utilization, the number of students utilizing each method, and the percent of students utilizing each method. Not all U.S. states provide information on vote method; voting method for voter files from these states are classified "Voting Method Unknown." For a list of these states, see our FAQ. <https://idhe.tufts.edu/nsive/nsive-faq#CampusReports>

## By Age Group

	2016	2018	2020
18-21	58%	44%	77%
22-24	53%	47%	72%
25-29	49%	44%	60%
30-39	58%	51%	60%
40-49	73%	71%	78%
50+	81%	78%	86%

**Voting is habit-forming and young voters will usually continue as voters in subsequent elections.** Also, young voters are more likely to be contacted by campaigns and are visible, and therefore significant, to elected officials. While in the past, we have seen voting rates increase across age groups, in recent cycles, the most significant increases have been among first-time and the youngest voters. Some colleges serve primarily young students, traditionally viewed as students in the 18-21 or 22-24 categories here. Others have much higher numbers of enrolled older undergraduate or graduate students.

# Looking Closer

## By Age Group

Here, we provide the numbers of students in each age category and the voting rates for each group. These are based on the student’s age on the day of the election, as calculated by the National Student Clearinghouse using data from student enrollment records.

	2016			2018			2020			2016-2020 Change (p.p)
	Enrolled	Voted	Rate	Enrolled	Voted	Rate	Enrolled	Voted	Rate	
18-21	22,009	12,689	58	23,862	10,509	44	24,067	18,557	77	↑ 19
22-24	7,125	3,780	53	7,457	3,518	47	7,629	5,472	72	↑ 19
25-29	3,275	1,602	49	3,511	1,548	44	3,581	2,166	60	↑ 12
30-39	1,963	1,130	58	1,995	1,024	51	2,221	1,339	60	↑ 3
40-49	535	389	73	605	428	71	651	510	78	↑ 6
50+	229	186	81	254	199	78	293	251	86	↑ 4

# Looking Closer

## By Sex

	2016			2018			2020			2016-2020
	Enrolled	Voted	Rate	Enrolled	Voted	Rate	Enrolled	Voted	Rate	Change (p.p)
Female	-	-	-	-	-	-	-	-	-	-
Male	-	-	-	-	-	-	-	-	-	-

**These are estimated voting rates for sex groups and the numbers we used to calculate their voting rates.** These classifications are provided by campuses and are obtained following the reporting procedures defined by the National Center for Education Statistics (NCES) of the Institute of Education Sciences (IES). Presently, NCES requires institutions to report students as “Male” or “Female” only.\*

If you notice missing data in this page, it could mean any of the following for your institution: (i) does not report this data; (ii) did not provide this data in past years; (iii) does not separately submit data for one or more of the demographic groups, or (iv) the data is reported for 10 or fewer students.

\*<https://surveys.nces.ed.gov/ipeds/public/survey-materials/faq?faqid=11>

# Looking Closer

## By Education Level / Undergraduate Class Year

	2016			2018			2020			2016-2020	
	Enrolled	Voted	Rate (%)	Enrolled	Voted	Rate (%)	Enrolled	Voted	Rate (%)	Change (p.p)	
EDUCATION LEVEL											
Undergraduate	27,139	15,384	57	29,123	13,030	45	29,346	22,396	76	↑	20
Graduate	7,782	4,290	55	8,374	4,139	49	9,032	5,853	65	↑	10
Class Unknown	215	102	47	187	57	30	64	46	72	↑	24
CLASS YEAR											
First Year	-	-	-	-	-	-	-	-	-	-	-
Second Year	-	-	-	-	-	-	-	-	-	-	-
Upper Level	-	-	-	-	-	-	-	-	-	-	-
ENROLLMENT STATUS											
Full-time	32,113	17,857	56	34,442	15,331	45	34,661	25,397	73	↑	18
Part-time	3,023	1,919	63	3,242	1,895	58	3,781	2,898	77	↑	13

These are estimated voting rates by Education Level (undergraduate/graduate), Class Year, and Enrollment Status (full-time/part-time), and the numbers we used to calculate these rates.

If you notice missing data in this page, it could mean any of the following for your institution: (i) does not report this data; (ii) did not provide this data in past years; (iii) does not separately submit data for one or more of the demographic groups, or (iv) the data is reported for 10 or fewer students.

## By Field of Study

FIELDS	2016			2018			2020			2016-2020 RateChange (p.p)
	Enrolled	Voted	Rate	Enrolled	Voted	Rate	Enrolled	Voted	Rate	
Architecture	238	119	50	210	87	41	211	149	71	↑ 21
Area, Ethnic, Cultural, and Gender Studies	140	107	76	113	77	68	104	85	82	↑ 5
Biological and Biomedical Sciences	3,400	1,674	49	3,694	1,536	42	3,891	2,772	71	↑ 22
Business, Management, and Marketing	7,879	4,228	54	8,580	3,423	40	8,633	6,366	74	↑ 20
Communication and Journalism	2,354	1,494	63	2,536	1,303	51	2,390	1,895	79	↑ 16
Computer and Information Sciences	1,001	391	39	1,225	416	34	1,285	780	61	↑ 22
Education	2,256	1,542	68	2,250	1,325	59	2,290	1,784	78	↑ 10

**These are estimated voting rates by field of study, and the numbers we used to calculate the field of study rates.** For an explanation of CIP codes, please see our FAQ.\* There are roughly 8,000 fields of study among U.S. colleges and universities, so we provide rates for condensed categories.

\*<https://tufts.app.box.com/v/idhe-nslve-report-faq>

## By Field of Study

FIELDS	2016			2018			2020			2016-2020 Change (p.p)
	Enrolled	Voted	Rate	Enrolled	Voted	Rate	Enrolled	Voted	Rate	
Engineering and Engineering Technologies	1,824	950	52	2,134	877	41	2,288	1,604	70	↑ 18
English Language and Literature	339	227	67	328	182	55	286	236	83	↑ 16
Family and Consumer/Human Sciences	839	478	57	1,041	477	46	1,015	748	74	↑ 17
Foreign Languages, Literatures, and Lingui..	554	333	60	494	233	47	463	325	70	↑ 10
Health Professions	2,746	1,537	56	2,846	1,262	44	2,632	1,959	74	↑ 18
History	241	164	68	227	137	60	202	153	76	↑ 8
Law Enforcement, Firefighting, and Protec..	202	113	56	203	99	49	270	217	80	↑ 24
Legal Professions and Studies	740	505	68	779	471	60	811	669	82	↑ 14
Liberal Arts and Sciences, and Humanities	307	177	58	491	200	41	447	345	77	↑ 20
Mathematics and Statistics	452	200	44	415	133	32	399	217	54	↑ 10
Multi/Interdisciplinary Studies	760	440	58	972	475	49	1,312	1,005	77	↑ 19
Natural Resources and Conservation	513	294	57	514	282	55	488	340	70	↑ 12
Parks, Recreation, Leisure, and Fitness Stu..	1,034	549	53	1,144	427	37	1,150	846	74	↑ 20
Philosophy and Religious Studies	136	70	51	134	60	45	156	106	68	↑ 16



## By Field of Study

FIELDS	2016			2018			2020			2016-2020 Change (p.p)
	Enrolled	Voted	Rate	Enrolled	Voted	Rate	Enrolled	Voted	Rate	
Physical Sciences	589	293	50	557	216	39	565	348	62	↑ 12
Psychology	1,520	831	55	1,553	736	47	1,855	1,385	75	↑ 20
Public Administration and Social Service Professions	650	446	69	652	435	67	656	531	81	↑ 12
Social Sciences	1,767	1,174	66	1,817	1,062	58	1,906	1,536	81	↑ 14
Visual and Performing Arts	1,113	627	56	1,150	571	50	1,127	847	75	↑ 19
Unknown	241	105	44	212	67	32	87	65	75	↑ 31

# About This Report

## Thank you for participating in the National Study of Learning, Voting, and Engagement.

Since NSLVE's launch in 2013, nearly 1,200 colleges and universities have signed up to receive their voting rates for the 2012, 2014, 2016, 2018, and 2020 federal elections.

Along with others, your institution's participation in this study has allowed us to build a robust database of over 50 million college student records, about 10 million for each election year, that serve as a foundation for innovative research on college student political learning and engagement in democracy.

NSLVE is a signature initiative of the Institute for Democracy and Higher Education (IDHE) at Tufts University's Jonathan M. Tisch College of Civic Life. The mission of IDHE is to shift college and university priorities and culture to advance political learning, agency, and equity. We achieve our mission through research, resource development, technical assistance, and advocacy.

### About the Data

The voter registration and voting rates in this report reflect the percentage of your institution's students who were eligible to vote and who actually voted in the 2016, 2018, and 2020 elections.

These results are based on enrollment records your institution submitted to the National Student Clearinghouse (NSC) and publicly available voting files collected by L2 Political.

Enrollment lists are adjusted by deducting students under age 18 (at the time of the election), people identified as non-degree seeking and those identified by campuses as "nonresident aliens" (NRAs) (the federal government's category for mostly international students). Unfortunately, not all campuses report NRAs to NSC. For those campuses, we use IPEDS to calculate the number of NRA students on each campus and adjust NSC enrollment numbers to estimate the number of students to remove. We also quality check NRA removals by verifying that there is little to no discrepancy between the number of international students reported by the campus to IPEDS and to NSC. We cannot adjust subgroup analyses absent identification of NRAs verified by the process above. We welcome closer partnerships with individual colleges and universities to provide more accurate rates. For more on the data and the matching process, see our FAQ on Campus Reports.

University Of Georgia

Thank you for the work you do to improve your students' political learning and engagement. We hope that you find your NSLVE report useful. For up-to-date news on NSLVE data, resources, and to sign up for our newsletter visit: <https://idhe.tufts.edu>.

References: IDHE encourages report recipients to share this report as broadly as possible, including posting it on the college or university's website. When doing so, please use the following citation: Institute for Democracy & Higher Education: National Study of Learning, Voting and Engagement. (2021). 2016, 2018, and 2020 report for \_\_\_\_\_ [name of institution]. Medford, MA.



Barnum Hall  
163 Packard Ave.  
Medford, MA 02155

tischcollege@tufts.edu  
617.627.3453



Institute for Democracy & Higher Education:  
National Study of Learning, Voting, and Engagement  
Barnum Hall, Medford, MA 02155

Follow Us on Twitter: @TuftsIDHE  
NSLVE@tufts.edu  
617.627.0620