



October 2021

Student Voting Rates for University Of Delaware

2020 NSLVE Campus Report

October 2021

Dear Colleagues:

We are pleased to send this tailored report containing your students' voting rates for 2020. This report contains three years of relevant topline data: 2016, 2018, and 2020. As always, we disaggregate the data so you can better identify and address gaps in participation.

College and university students participated in record-breaking numbers in the 2020 election. In 2016, the Average Institutional Voting Rate was 53%. This year, it jumped to 66%. We encourage you to review Democracy Counts 2020, our most recent national report.

As in past years, we urge you to share this report widely and strategically, particularly with faculty who, in 2020, were often the most consistent communicators with students about ever-changing voting conditions and deadlines. We also urge you to review our recommendations for engaging elections to cultivate a robust and healthy campus climate for political engagement, discourse, equity, and participation: Election Imperatives (2019) and the more recent Election Imperatives: A Time of Physical Distancing and Social Action. Since "pervasive political discussions" and attentiveness to the campus culture around speech and academic freedom are among our top recommendations, we direct you to our discussion guides on talking about your NSLVE report, on free speech and inclusion, and on hot topics, our Making Sense of ... guides.

Finally, we always encourage you to work with us. Help us help you get better data by reaching out. Email IDHE@Tufts.edu for more information. And as always, watch your inbox for our periodic newsletter, IDHE Update, for announcements about upcoming releases and new resources.

Congratulations on engaging your students in the 2020 election. Remember, student political learning is a year-round objective. Elections may be episodic, but student political engagement should not be.

All the Best,
IDHE Team



(Top Row from left) Duy Trinh, Program Administrator; Adam Gismondi, Director of Impact; Dave Brinker, Senior Researcher;
(Bottom Row from left) Nancy Thomas, Director; Norma López, Postdoctoral Scholar; Prabhat Gautam, Data Manager.

We also want to acknowledge and thank **Syed Golam Mohaimen, M.S. student in Data Science at Tufts University** for his contributions toward the creation of these reports.

In This Report

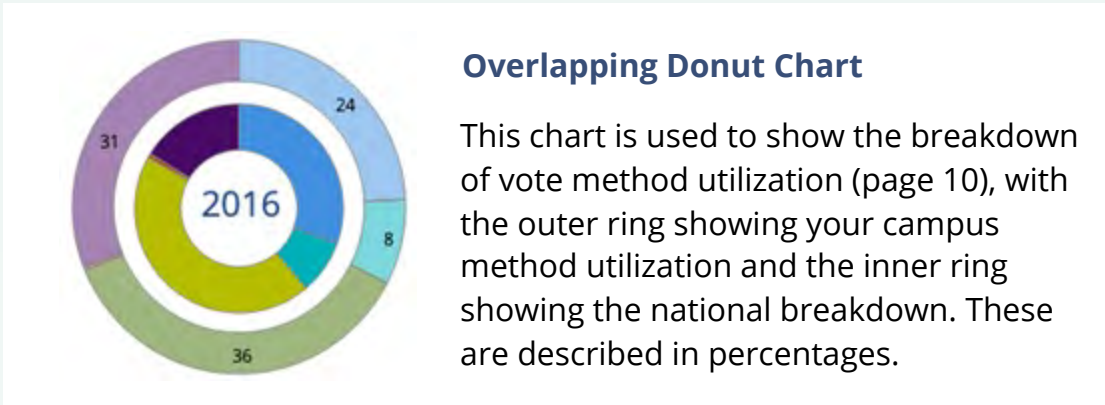
This report presents data on student voter participation rates for your campus. The topline counts on page 5 tells you how many students voted, but we encourage you to look carefully at the data on subsequent pages to learn who voted. Data are presented in the form of vessel charts, overlapping donut charts, and tables.



	2014			2018			2014-2018 Change (p.p.)
	Enrolled	Voted	Rate (%)	Enrolled	Voted	Rate (%)	
Asian	-	-	-	-	-	-	-
American Indian/ Alaska Native	-	-	-	-	-	-	-
Black	-	-	-	-	-	-	-
Hispanic	-	-	-	-	-	-	-

Tables

The tables show, on the left-side columns, the numbers of students and the rates from 2016, 2018, and 2020. On the left-side, percentage point (p.p.) changes between 2016 and 2020. A red down arrow indicates a decrease, a green up arrow indicates an increase, and a yellow arrow pointing to the right indicates no change. "-" in these tables indicates that the data is unavailable/missing, or is available for 10 or less students.



Voting, Registration and Yield Rates

YOUR INSTITUTION

75.2%

2020 Voting Rate

+19.7

Change From 2016

ALL INSTITUTIONS

66%

2020 Voting Rate

REGISTRATION RATE

Year	Rate
2016	80.9%
2018	79.8%
2020	87.8%

The **Registration Rate** is the percent of your voting-eligible students who registered to vote.

VOTING RATE OF REGISTERED STUDENTS

Year	Rate
2016	68.6%
2018	48.5%
2020	85.5%

The **Voting Rate of Registered Students** is the percent of registered students who voted on Election Day. We often refer to this as the “yield” rate.

VOTING RATE

Year	Rate
2016	55.5%
2018	38.7%
2020	75.2%

The **Voting Rate** is the percentage of eligible students who voted on Election Day. The voting rate is also the product of the registration and yield rates.

Looking Closer

Voting and Registration Rates

	2016	2018	2020	2016-2020 Change (p.p.)
Total Student Enrollment	22,753	23,623	23,115	↑ 362
(Age under 18/Unknown)	–	–	–	–
(NSC reported non-resident aliens)	2,057	2,217	2,201	↑ 144
(FERPA records blocked)	412	332	283	↓ -129
(Non-Degree Seeking Students)	85	75	109	↑ 24
Total eligible voters	20,200	20,999	20,516	↑ 316
Number of students who registered	16,338	16,765	18,023	↑ 1,685
Number of students who voted	11,207	8,123	15,418	↑ 4,211
Registration Rate %	81	80	88	↑ 7
Voting Rate of Registered Students %	69	48	86	↑ 17
Voting Rate %	55	39	75	↑ 20

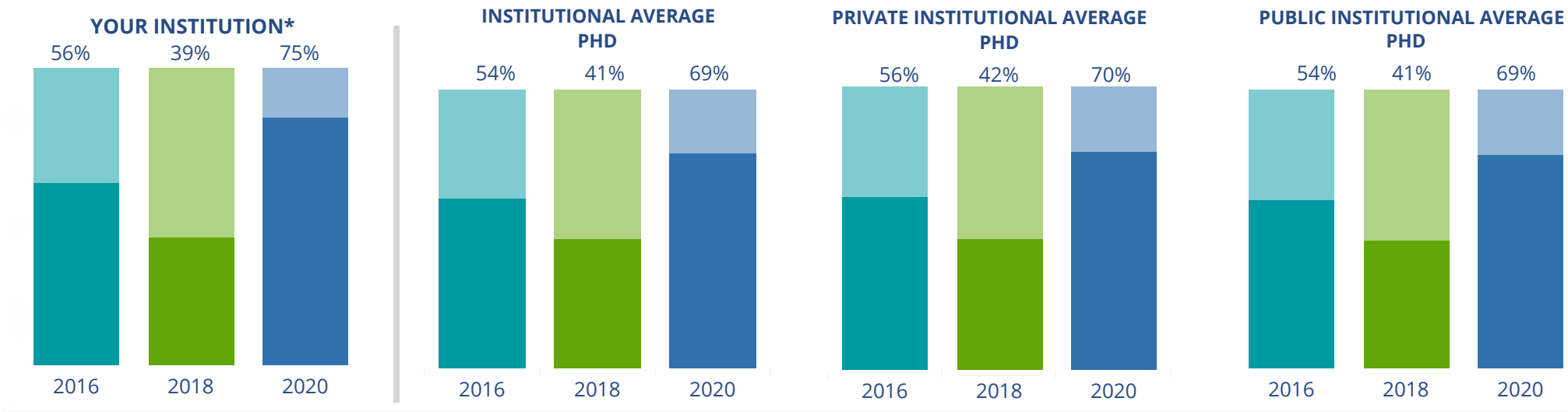
This page provides the numbers we used to calculate your voting, registration, and yield rates. The sub-categories under total student enrollment are the adjustments that we make to account for students who are ineligible to vote due to age or citizenship status. We also exclude, when correctly flagged, students who are not pursuing degrees.

We have removed non-resident aliens (international students) based on your institution's enrollment submission to the National Student Clearinghouse. This is indicated by "NSC reported non-resident aliens" on this page.

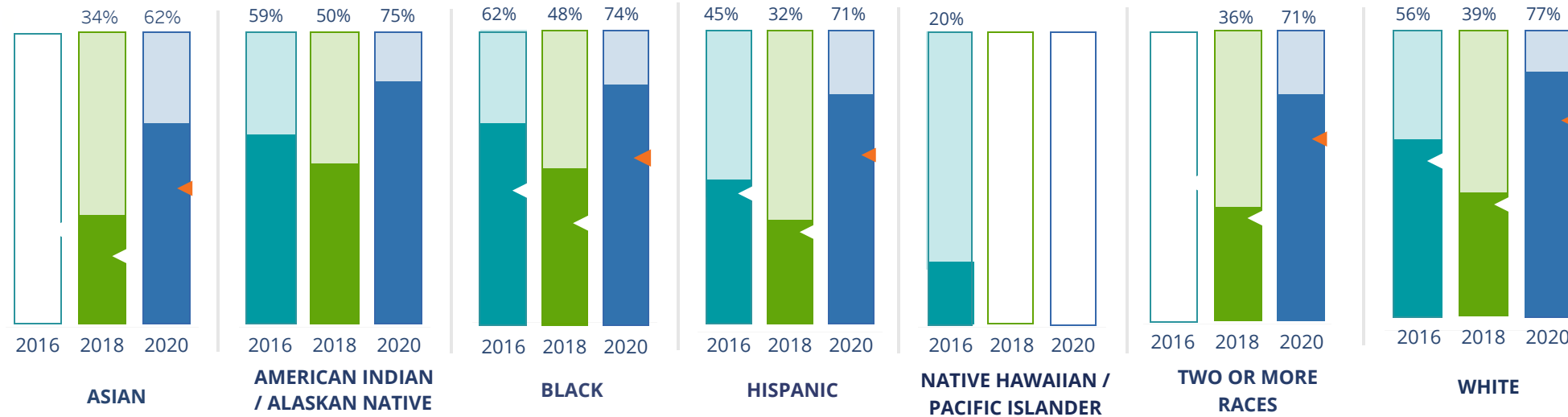
By Institution Types



These are estimated voting rates of your institution compared to the average voting rates of similar institutions in NSLVE. *"Your Institution" chart is presented at a different scale.



By Race / Ethnicity



These are estimated voting rates for race / ethnicity groups. These classifications are provided by campuses and are obtained following race reporting procedures* defined by the National Center for Education Statistics of the Institute of Education Sciences (IES). Please see our FAQ for more detail on why we cannot report national benchmark for some of the demographic groups:

<https://tufts.app.box.com/v/idhe-nsive-report-faq>

If you notice unavailable/missing data in this page, it could mean any of the following for your institution: (i) does not report this data; (ii) did not provide this data in past years; (iii) does not separately submit data for one or more of the demographic groups, or (iv) the data is reported for 10 or fewer students.

* <https://nces.ed.gov/ipeds/report-your-data/race-ethnicity-collecting-data-for-reporting-purposes>

Looking Closer

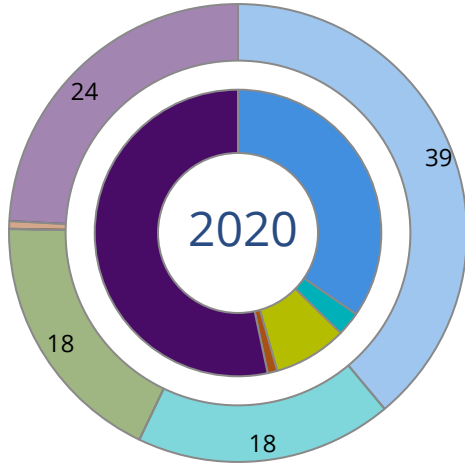
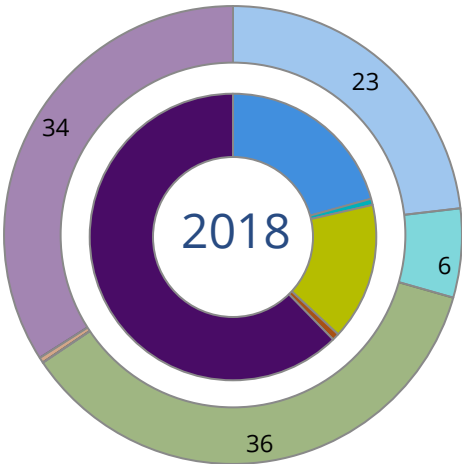
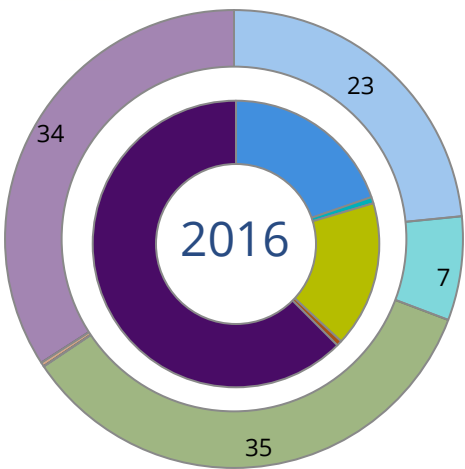
By Race/Ethnicity

This page provides the numbers we used to calculate race / ethnicity group voting rates. We include the counts of students and the change in rates between the two most recent comparable election years. If you notice unavailable/missing data in this page, it could mean any of the following for your institution: (i) does not report this data; (ii) did not provide this data in past years; (iii) does not separately submit data for one or more of the demographic groups, or (iv) the data is reported for 10 or fewer students.

	2016			2018			2020			2016-2020
	Enrolled	Voted	Rate	Enrolled	Voted	Rate	Enrolled	Voted	Rate	Change (p.p)
Asian	-	-	-	1,174	397	34	1,176	732	62	-
American Indian/ Alaska Native	34	20	59	26	13	50	24	18	75	↑ 16
Black	1,244	770	62	1,294	623	48	1,410	1,042	74	↑ 12
Hispanic	638	284	45	1,757	564	32	1,851	1,313	71	↑ 26
Native Hawaiian/ Pacific Islander	2,564	504	20	17	-	-	11	-	-	-
2 or More Races	-	-	-	687	247	36	786	561	71	-
White	14,086	7,849	56	15,643	6,130	39	14,643	11,311	77	↑ 22
Race Unknown	3,656	1,780	49	401	144	36	615	432	70	↑ 22

By Voting Method

Not-In-Person Early Vote In-Person Other Provisional Unknown



	2016		2018		2020		2016-2020	
	Voted	Rate	Voted	Rate	Voted	Rate	Change (p.p.)	
Early Vote	81	1	55	1	415	3	2	↑
In-Person on Election Day	1,852	17	1,258	16	1,278	8	-8	↓
Not-In-Person	2,211	20	1,682	21	5,330	35	15	↑
Other	-	-	-	-	-	-	-	
Provisional	65	1	61	1	172	1	1	↑
Voting Method Unknown	6,998	63	5,067	62	8,223	53	-9	↓

These are estimated rates for vote method utilization, the number of students utilizing each method, and the percent of students utilizing each method. Not all U.S. states provide information on vote method; voting method for voter files from these states are classified "Voting Method Unknown." For a list of these states, see our FAQ. <https://idhe.tufts.edu/nsive/nsive-faq#CampusReports>

By Age Group

	2016	2018	2020
18-21	51%	35%	76%
22-24	50%	44%	74%
25-29	40%	52%	73%
30-39	46%	56%	69%
40-49	68%	67%	76%
50+	82%	82%	87%

Voting is habit-forming and young voters will usually continue as voters in subsequent elections. Also, young voters are more likely to be contacted by campaigns and are visible, and therefore significant, to elected officials. While in the past, we have seen voting rates increase across age groups, in recent cycles, the most significant increases have been among first-time and the youngest voters. Some colleges serve primarily young students, traditionally viewed as students in the 18-21 or 22-24 categories here. Others have much higher numbers of enrolled older undergraduate or graduate students.

Looking Closer

By Age Group

Here, we provide the numbers of students in each age category and the voting rates for each group. These are based on the student's age on the day of the election, as calculated by the National Student Clearinghouse using data from student enrollment records.

	2016			2018			2020			2016-2020
	Enrolled	Voted	Rate	Enrolled	Voted	Rate	Enrolled	Voted	Rate	Change (p.p)
18-21	15,901	8,120	51	15,891	5,500	35	15,558	11,760	76	↑ 25
22-24	3,072	1,537	50	2,564	1,137	44	2,548	1,886	74	↑ 24
25-29	1,712	690	40	1,145	597	52	1,069	778	73	↑ 32
30-39	1,001	464	46	812	458	56	762	525	69	↑ 23
40-49	309	210	68	329	220	67	308	233	76	↑ 8
50+	227	186	82	258	211	82	271	236	87	↑ 5

Looking Closer

By Sex

	2016			2018			2020			2016-2020	
	Enrolled	Voted	Rate	Enrolled	Voted	Rate	Enrolled	Voted	Rate	Change (p.p)	
Female	12,449	6,791	55	12,045	4,958	41	11,946	9,397	79	↑	24
Male	9,764	4,412	45	8,949	3,162	35	8,565	6,019	70	↑	25

These are estimated voting rates for sex groups and the numbers we used to calculate their voting rates. These classifications are provided by campuses and are obtained following the reporting procedures defined by the National Center for Education Statistics (NCES) of the Institute of Education Sciences (IES). Presently, NCES requires institutions to report students as “Male” or “Female” only.*

If you notice missing data in this page, it could mean any of the following for your institution: (i) does not report this data; (ii) did not provide this data in past years; (iii) does not separately submit data for one or more of the demographic groups, or (iv) the data is reported for 10 or fewer students.

*<https://surveys.nces.ed.gov/ipeds/public/survey-materials/faq?faqid=11>

Looking Closer

By Education Level / Undergraduate Class Year

	2016			2018			2020			2016-2020	
	Enrolled	Voted	Rate (%)	Enrolled	Voted	Rate (%)	Enrolled	Voted	Rate (%)	Change (p.p)	
EDUCATION LEVEL											
Undergraduate	17,953	9,264	52	17,747	6,348	36	17,218	12,966	75	↑	24
Graduate	3,624	1,552	43	2,763	1,510	55	2,874	2,156	75	↑	32
Class Unknown	645	391	61	489	265	54	424	296	70	↑	9
CLASS YEAR											
First Year	3,783	46	1,740	3,748	30	1,129	3,368	76	2,566	↑	30
Second Year	4,423	49	2,157	4,332	32	1,390	4,186	75	3,159	↑	27
Upper Level	9,816	55	5,414	9,671	40	3,842	9,749	75	7,312	↑	20
ENROLLMENT STATUS											
Full-time	20,306	9,990	49	19,298	7,173	37	18,882	14,240	75	↑	26
Part-time	1,916	1,217	64	1,701	950	56	1,634	1,178	72	↑	9

These are estimated voting rates by Education Level (undergraduate/graduate), Class Year, and Enrollment Status (full-time/part-time), and the numbers we used to calculate these rates.

If you notice missing data in this page, it could mean any of the following for your institution: (i) does not report this data; (ii) did not provide this data in past years; (iii) does not separately submit data for one or more of the demographic groups, or (iv) the data is reported for 10 or fewer students.

By Field of Study

FIELDS	2016			2018			2020			2016-2020 RateChange (p.p)
	Enrolled	Voted	Rate	Enrolled	Voted	Rate	Enrolled	Voted	Rate	
Architecture	27	12	44	31	11	35	57	41	72	↑ 27
Area, Ethnic, Cultural, and Gender Studies	54	39	72	52	27	52	44	33	75	↑ 3
Biological and Biomedical Sciences	1,408	760	54	1,485	569	38	1,477	1,080	73	↑ 19
Business, Management, and Marketing	3,454	1,450	42	3,172	973	31	3,108	2,331	75	↑ 33
Communication and Journalism	569	307	54	571	210	37	628	491	78	↑ 24
Computer and Information Sciences	427	183	43	395	167	42	480	348	73	↑ 30
Education	1,427	837	59	1,434	655	46	1,368	1,104	81	↑ 22

These are estimated voting rates by field of study, and the numbers we used to calculate the field of study rates. For an explanation of CIP codes, please see our FAQ.* There are roughly 8,000 fields of study among U.S. colleges and universities, so we provide rates for condensed categories.

*<https://tufts.app.box.com/v/idhe-nslve-report-faq>

By Field of Study

FIELDS	2016			2018			2020			2016-2020 Change (p.p)
	Enrolled	Voted	Rate	Enrolled	Voted	Rate	Enrolled	Voted	Rate	
Engineering and Engineering Technologies	2,590	1,176	45	2,165	814	38	2,108	1,585	75	↑ 30
English Language and Literature	318	190	60	314	154	49	268	207	77	↑ 17
Family and Consumer/Human Sciences	439	222	51	387	128	33	301	240	80	↑ 29
Foreign Languages, Literatures, and Lingui..	221	109	49	164	90	55	147	116	79	↑ 30
Health Professions	2,394	1,343	56	2,577	884	34	2,653	2,040	77	↑ 21
History	200	134	67	196	107	55	195	144	74	↑ 7
Law Enforcement, Firefighting, and Protec..	24	13	54	26	20	77	21	14	67	↑ 13
Liberal Arts and Sciences, and Humanities	2,022	1,012	50	1,834	679	37	1,697	1,201	71	↑ 21
Mathematics and Statistics	279	94	34	190	74	39	236	165	70	↑ 36
Multi/Interdisciplinary Studies	349	202	58	348	135	39	407	311	76	↑ 19
Natural Resources and Conservation	409	229	56	431	196	45	370	296	80	↑ 24
Parks, Recreation, Leisure, and Fitness Stu..	755	381	50	781	244	31	705	525	74	↑ 24
Philosophy and Religious Studies	25	–	–	20	–	–	15	11	73	–
Physical Sciences	656	241	37	449	202	45	430	312	73	↑ 36

By Field of Study

FIELDS	2016			2018			2020			2016-2020 Change (p.p)
	Enrolled	Voted	Rate	Enrolled	Voted	Rate	Enrolled	Voted	Rate	
Psychology	649	336	52	652	258	40	789	601	76	↑ 24
Public Administration and Social Service Professions	406	261	64	415	226	54	330	257	78	↑ 14
Social Sciences	1,706	873	51	1,695	695	41	1,541	1,113	72	↑ 21
Visual and Performing Arts	448	256	57	409	184	45	396	299	76	↑ 18
Unknown	645	373	58	522	289	55	459	327	71	↑ 13

About This Report

Thank you for participating in the National Study of Learning, Voting, and Engagement.

Since NSLVE's launch in 2013, nearly 1,200 colleges and universities have signed up to receive their voting rates for the 2012, 2014, 2016, 2018, and 2020 federal elections.

Along with others, your institution's participation in this study has allowed us to build a robust database of over 50 million college student records, about 10 million for each election year, that serve as a foundation for innovative research on college student political learning and engagement in democracy.

NSLVE is a signature initiative of the Institute for Democracy and Higher Education (IDHE) at Tufts University's Jonathan M. Tisch College of Civic Life. The mission of IDHE is to shift college and university priorities and culture to advance political learning, agency, and equity. We achieve our mission through research, resource development, technical assistance, and advocacy.

About the Data

The voter registration and voting rates in this report reflect the percentage of your institution's students who were eligible to vote and who actually voted in the 2016, 2018, and 2020 elections.

These results are based on enrollment records your institution submitted to the National Student Clearinghouse (NSC) and publicly available voting files collected by L2 Political.

Enrollment lists are adjusted by deducting students under age 18 (at the time of the election), people identified as non-degree seeking and those identified by campuses as "nonresident aliens" (NRAs) (the federal government's category for mostly international students). Unfortunately, not all campuses report NRAs to NSC. For those campuses, we use IPEDS to calculate the number of NRA students on each campus and adjust NSC enrollment numbers to estimate the number of students to remove. We also quality check NRA removals by verifying that there is little to no discrepancy between the number of international students reported by the campus to IPEDS and to NSC. We cannot adjust subgroup analyses absent identification of NRAs verified by the process above. We welcome closer partnerships with individual colleges and universities to provide more accurate rates. For more on the data and the matching process, see our FAQ on Campus Reports.

University Of Delaware

Thank you for the work you do to improve your students' political learning and engagement. We hope that you find your NSLVE report useful. For up-to-date news on NSLVE data, resources, and to sign up for our newsletter visit: <https://idhe.tufts.edu>.

References: IDHE encourages report recipients to share this report as broadly as possible, including posting it on the college or university's website. When doing so, please use the following citation: Institute for Democracy & Higher Education: National Study of Learning, Voting and Engagement. (2021). 2016, 2018, and 2020 report for _____ [name of institution]. Medford, MA.



Barnum Hall
163 Packard Ave.
Medford, MA 02155

tischcollege@tufts.edu
617.627.3453



Institute for Democracy & Higher Education:
National Study of Learning, Voting, and Engagement
Barnum Hall, Medford, MA 02155

Follow Us on Twitter: @TuftsIDHE
NSLVE@tufts.edu
617.627.0620