



October 2021

Student Voting Rates for University Of Central Florida

2020 NSLVE Campus Report



Jonathan M. Tisch
College of Civic Life



INSTITUTE FOR DEMOCRACY
& HIGHER EDUCATION

October 2021

Dear Colleagues:

We are pleased to send this tailored report containing your students' voting rates for 2020. This report contains three years of relevant topline data: 2016, 2018, and 2020. As always, we disaggregate the data so you can better identify and address gaps in participation.

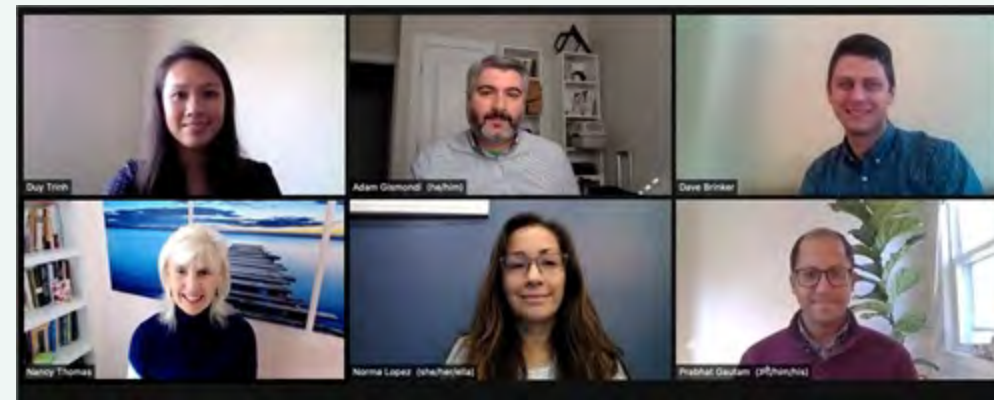
College and university students participated in record-breaking numbers in the 2020 election. In 2016, the Average Institutional Voting Rate was 53%. This year, it jumped to 66%. We encourage you to review Democracy Counts 2020, our most recent national report.

As in past years, we urge you to share this report widely and strategically, particularly with faculty who, in 2020, were often the most consistent communicators with students about ever-changing voting conditions and deadlines. We also urge you to review our recommendations for engaging elections to cultivate a robust and healthy campus climate for political engagement, discourse, equity, and participation: Election Imperatives (2019) and the more recent Election Imperatives: A Time of Physical Distancing and Social Action. Since "pervasive political discussions" and attentiveness to the campus culture around speech and academic freedom are among our top recommendations, we direct you to our discussion guides on talking about your NSLVE report, on free speech and inclusion, and on hot topics, our Making Sense of ... guides.

Finally, we always encourage you to work with us. Help us help you get better data by reaching out. Email IDHE@Tufts.edu for more information. And as always, watch your inbox for our periodic newsletter, IDHE Update, for announcements about upcoming releases and new resources.

Congratulations on engaging your students in the 2020 election. Remember, student political learning is a year-round objective. Elections may be episodic, but student political engagement should not be.

All the Best,
IDHE Team

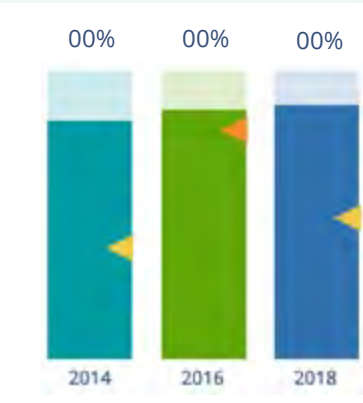


(Top Row from left) Duy Trinh, Program Administrator; Adam Gismondi, Director of Impact; Dave Brinker, Senior Researcher;
(Bottom Row from left) Nancy Thomas, Director; Norma López, Postdoctoral Scholar; Prabhat Gautam, Data Manager.

We also want to acknowledge and thank **Syed Golam Mohaimen, M.S. student in Data Science at Tufts University** for his contributions toward the creation of these reports.

In This Report

This report presents data on student voter participation rates for your campus. The topline counts on page 5 tells you how many students voted, but we encourage you to look carefully at the data on subsequent pages to learn who voted. Data are presented in the form of vessel charts, overlapping donut charts, and tables.



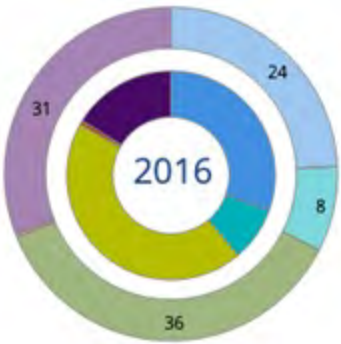
Vessel Chart

This chart shows rates out of 100%, with arrows to the right of each bar representing relevant national averages (medians), which you can find in IDHE's national report Democracy Counts 2020.

	2014			2018			2014-2018
	Enrolled	Voted	Rate (%)	Enrolled	Voted	Rate (%)	Change (p.p.)
Asian	-	-	-	-	-	-	-
American Indian/ Alaska Native	-	-	-	-	-	-	-
Black	-	-	-	-	-	-	-
Hispanic	-	-	-	-	-	-	-

Tables

The tables show, on the left-side columns, the numbers of students and the rates from 2016, 2018, and 2020. On the left-side, percentage point (p.p.) changes between 2016 and 2020. A red down arrow indicates a decrease, a green up arrow indicates an increase, and a yellow arrow pointing to the right indicates no change. "-" in these tables indicates that the data is unavailable/missing, or is available for 10 or less students.



Overlapping Donut Chart

This chart is used to show the breakdown of vote method utilization (page 10), with the outer ring showing your campus method utilization and the inner ring showing the national breakdown. These are described in percentages.

Voting, Registration and Yield Rates

YOUR INSTITUTION

74.6%

2020 Voting Rate

+13.5

Change From 2016

ALL INSTITUTIONS

66%

2020 Voting Rate

REGISTRATION RATE

Year	Rate
2016	83.0%
2018	82.8%
2020	88.7%

The **Registration Rate** is the percent of your voting-eligible students who registered to vote.

VOTING RATE OF REGISTERED STUDENTS

Year	Rate
2016	73.6%
2018	57.4%
2020	84.1%

The **Voting Rate of Registered Students** is the percent of registered students who voted on Election Day. We often refer to this as the “yield” rate.

VOTING RATE

Year	Rate
2016	61.1%
2018	47.5%
2020	74.6%

The **Voting Rate** is the percentage of eligible students who voted on Election Day. The voting rate is also the product of the registration and yield rates.

Looking Closer

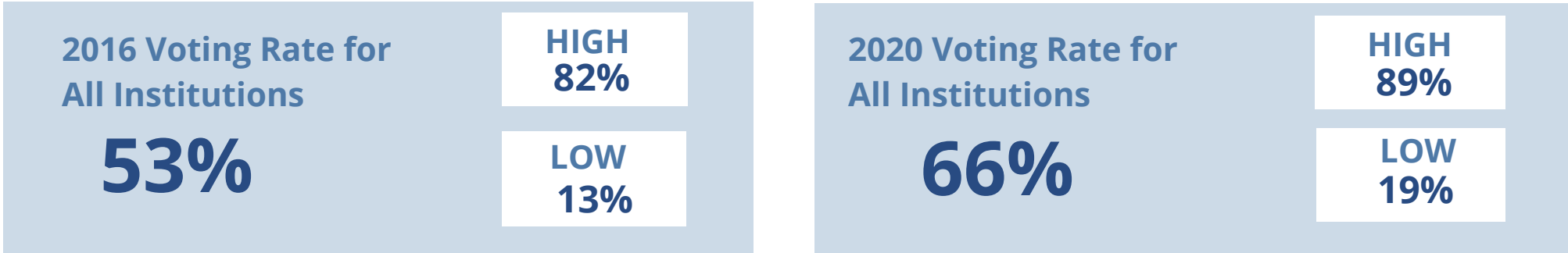
Voting and Registration Rates

	2016	2018	2020	2016-2020 Change (p.p.)
Total Student Enrollment	61,496	65,881	69,481	↑ 7,985
(Age under 18/Unknown)	–	–	–	–
(IPEDS estimated non-resident aliens)	1,955	2,588	2,934	↑ 979
(FERPA records blocked)	621	834	992	↑ 371
(Non-Degree Seeking Students)	343	408	458	↑ 115
Total eligible voters	58,577	62,051	65,095	↑ 6,517
Number of students who registered	48,616	51,396	57,707	↑ 9,091
Number of students who voted	35,782	29,478	48,536	↑ 12,754
Registration Rate %	83	83	89	↑ 6
Voting Rate of Registered Students %	74	57	84	↑ 11
Voting Rate %	61	48	75	↑ 13

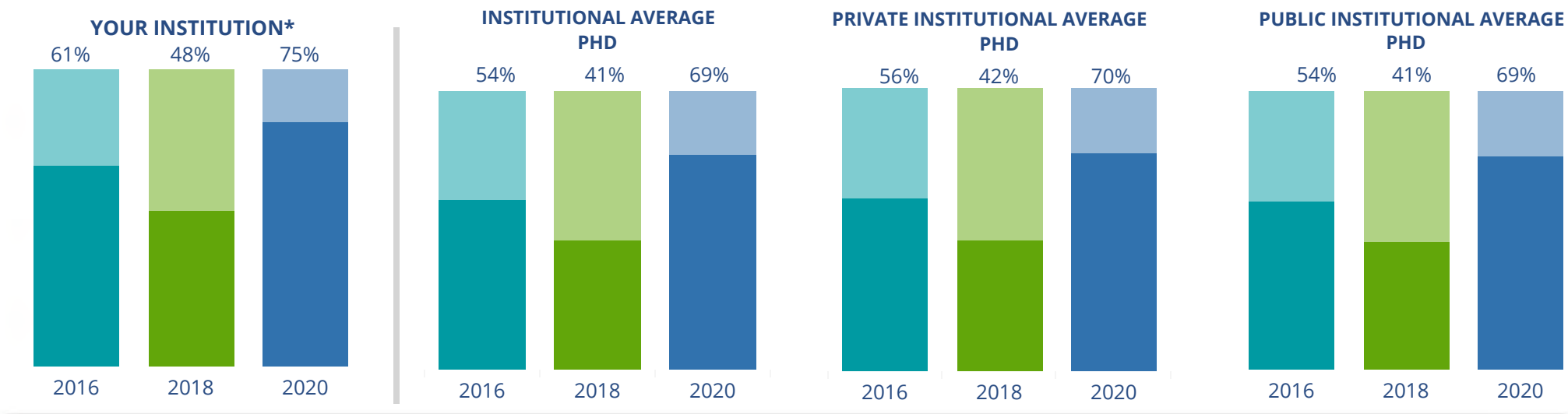
This page provides the numbers we used to calculate your voting, registration, and yield rates. The sub-categories under total student enrollment are the adjustments that we make to account for students who are ineligible to vote due to age or citizenship status. We also exclude, when correctly flagged, students who are not pursuing degrees.

We use IPEDS-derived estimates of NRAs when institutions do not submit non-resident alien status data to NSC, or we cannot verify the accuracy of the reported counts. This estimate is given by "IPEDS estimated non-resident aliens" on this page. If you believe the number of international students reported on this report is incorrect, you can manually adjust your institution's voting rates by using our recalculation tool. <https://id-he.tufts.edu/nsive/nsive-recalculation-tool>.

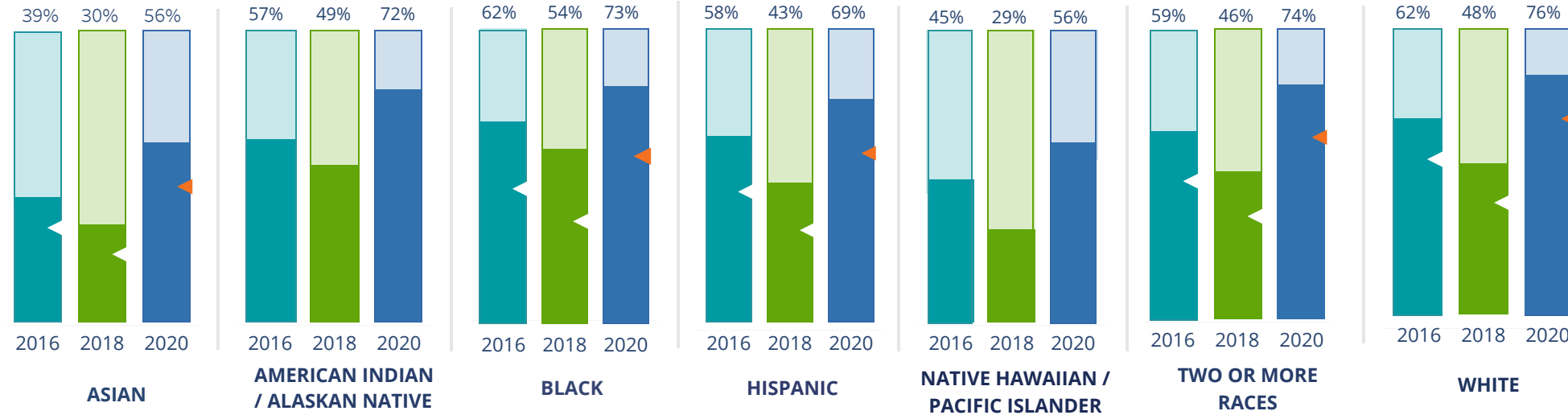
By Institution Types



These are estimated voting rates of your institution compared to the average voting rates of similar institutions in NSLVE. *"Your Institution" chart is presented at a different scale.



By Race / Ethnicity



These are estimated voting rates for race / ethnicity groups. These classifications are provided by campuses and are obtained following race reporting procedures* defined by the National Center for Education Statistics of the Institute of Education Sciences (IES). Please see our FAQ for more detail on why we cannot report national benchmark for some of the demographic groups:

<https://tufts.app.box.com/v/idhe-nsive-report-faq>

If you notice unavailable/missing data in this page, it could mean any of the following for your institution: (i) does not report this data; (ii) did not provide this data in past years; (iii) does not separately submit data for one or more of the demographic groups, or (iv) the data is reported for 10 or fewer students.

* <https://nces.ed.gov/ipeds/report-your-data/race-ethnicity-collecting-data-for-reporting-purposes>

Looking Closer

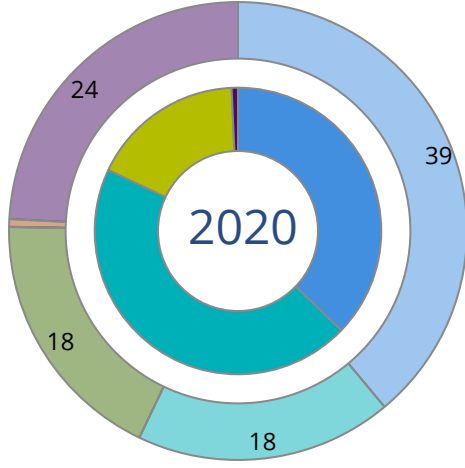
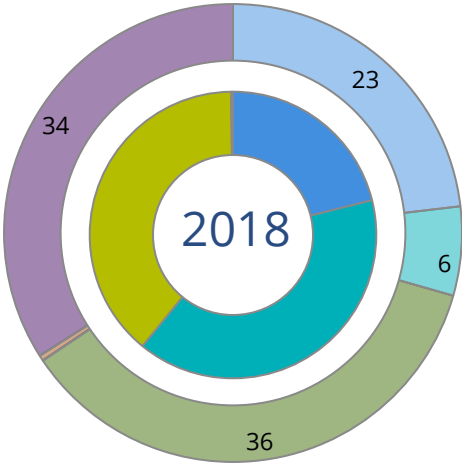
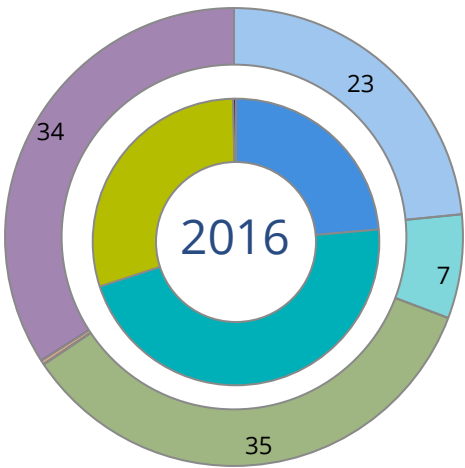
By Race/Ethnicity

This page provides the numbers we used to calculate race / ethnicity group voting rates. We include the counts of students and the change in rates between the two most recent comparable election years. If you notice unavailable/missing data in this page, it could mean any of the following for your institution: (i) does not report this data; (ii) did not provide this data in past years; (iii) does not separately submit data for one or more of the demographic groups, or (iv) the data is reported for 10 or fewer students.

	2016			2018			2020			2016-2020 Change (p.p)
	Enrolled	Voted	Rate	Enrolled	Voted	Rate	Enrolled	Voted	Rate	
Asian	4,300	1,658	39	4,915	1,490	30	5,259	2,928	56	↑ 17
American Indian/ Alaska Native	99	56	57	105	51	49	83	60	72	↑ 16
Black	6,867	4,255	62	7,313	3,915	54	7,209	5,271	73	↑ 11
Hispanic	14,875	8,574	58	17,444	7,528	43	19,600	13,504	69	↑ 11
Native Hawaiian/ Pacific Islander	114	51	45	107	31	29	105	59	56	↑ 11
2 or More Races	2,208	1,303	59	2,414	1,118	46	2,717	2,001	74	↑ 15
White	31,306	19,451	62	31,512	15,071	48	32,094	24,329	76	↑ 14
Race Unknown	746	434	58	805	274	34	931	384	41	↓ -17

By Voting Method

■ Not-In-Person
 ■ Early Vote
 ■ In-Person
 ■ Other
 ■ Provisional
 ■ Unknown



	2016		2018		2020		2016-2020	
	Voted	Rate	Voted	Rate	Voted	Rate	Change (p.p.)	
Early Vote	16,620	46	11,731	40	21,732	45	-2	↓
In-Person on Election Day	10,618	30	11,460	39	8,418	17	-12	↓
Not-In-Person	8,432	24	6,211	21	18,033	37	14	↑
Other	-	-	-	-	-	-	-	
Provisional	13	0	-	-	-	-	-	
Voting Method Unknown	99	0	74	0	350	1	0	↑

These are estimated rates for vote method utilization, the number of students utilizing each method, and the percent of students utilizing each method. Not all U.S. states provide information on vote method; voting method for voter files from these states are classified "Voting Method Unknown." For a list of these states, see our FAQ. <https://idhe.tufts.edu/nsive/nsive-faq#CampusReports>

By Age Group

	2016	2018	2020
18-21	58%	43%	73%
22-24	57%	45%	69%
25-29	58%	47%	67%
30-39	65%	54%	69%
40-49	76%	64%	76%
50+	81%	75%	86%

Voting is habit-forming and young voters will usually continue as voters in subsequent elections.

Also, young voters are more likely to be contacted by campaigns and are visible, and therefore significant, to elected officials. While in the past, we have seen voting rates increase across age groups, in recent cycles, the most significant increases have been among first-time and the youngest voters. Some colleges serve primarily young students, traditionally viewed as students in the 18-21 or 22-24 categories here. Others have much higher numbers of enrolled older undergraduate or graduate students.

Looking Closer

By Age Group

Here, we provide the numbers of students in each age category and the voting rates for each group. These are based on the student’s age on the day of the election, as calculated by the National Student Clearinghouse using data from student enrollment records.

	2016			2018			2020			2016-2020	
	Enrolled	Voted	Rate	Enrolled	Voted	Rate	Enrolled	Voted	Rate	Change (p.p)	
18-21	29,183	16,926	58	31,570	13,499	43	34,192	25,100	73	↑	15
22-24	16,303	9,366	57	17,199	7,768	45	17,633	12,250	69	↑	12
25-29	8,368	4,886	58	8,829	4,137	47	8,973	5,985	67	↑	8
30-39	4,531	2,958	65	4,812	2,582	54	4,943	3,412	69	↑	4
40-49	1,499	1,136	76	1,541	991	64	1,566	1,195	76	↑	1
50+	631	510	81	664	501	75	691	594	86	↑	5

Looking Closer

By Sex

	2016			2018			2020			2016-2020
	Enrolled	Voted	Rate	Enrolled	Voted	Rate	Enrolled	Voted	Rate	Change (p.p)
Female	-	-	-	-	-	-	-	-	-	-
Male	-	-	-	-	-	-	-	-	-	-

These are estimated voting rates for sex groups and the numbers we used to calculate their voting rates. These classifications are provided by campuses and are obtained following the reporting procedures defined by the National Center for Education Statistics (NCES) of the Institute of Education Sciences (IES). Presently, NCES requires institutions to report students as “Male” or “Female” only.*

If you notice missing data in this page, it could mean any of the following for your institution: (i) does not report this data; (ii) did not provide this data in past years; (iii) does not separately submit data for one or more of the demographic groups, or (iv) the data is reported for 10 or fewer students.

*<https://surveys.nces.ed.gov/ipeds/public/survey-materials/faq?faqid=11>

Looking Closer

By Education Level / Undergraduate Class Year

	2016			2018			2020			2016-2020	
	Enrolled	Voted	Rate (%)	Enrolled	Voted	Rate (%)	Enrolled	Voted	Rate (%)	Change (p.p)	
EDUCATION LEVEL											
Undergraduate	53,480	31,574	59	56,557	25,298	45	59,129	42,380	72	↑ 13	
Graduate	7,004	4,186	60	8,055	4,179	52	8,865	6,155	69	↑ 10	
Class Unknown	31	22	71	-	-	-	-	-	-	-	-
CLASS YEAR											
First Year	-	-	-	5,151	39	2,014	4,914	70	3,423	-	
Second Year	-	-	-	8,465	40	3,369	8,102	72	5,843	-	
Upper Level	-	-	-	42,961	46	19,927	46,121	72	33,119	-	
ENROLLMENT STATUS											
Full-time	42,208	24,474	58	44,554	19,554	44	46,512	33,236	71	↑ 13	
Part-time	18,307	11,308	62	20,061	9,924	49	21,486	15,300	71	↑ 9	

These are estimated voting rates by Education Level (undergraduate/graduate), Class Year, and Enrollment Status (full-time/part-time), and the numbers we used to calculate these rates.

If you notice missing data in this page, it could mean any of the following for your institution: (i) does not report this data; (ii) did not provide this data in past years; (iii) does not separately submit data for one or more of the demographic groups, or (iv) the data is reported for 10 or fewer students.

By Field of Study

FIELDS	2016			2018			2020			2016-2020 RateChange (p.p)
	Enrolled	Voted	Rate	Enrolled	Voted	Rate	Enrolled	Voted	Rate	
Architecture	169	93	55	181	80	44	263	177	67	↑ 12
Area, Ethnic, Cultural, and Gender Studies	–	–	–	23	14	61	20	14	70	–
Biological and Biomedical Sciences	4,316	2,472	57	4,858	2,055	42	5,315	3,761	71	↑ 13
Business, Management, and Marketing	11,438	6,425	56	11,465	4,572	40	11,527	7,972	69	↑ 13
Communication and Journalism	2,122	1,342	63	2,065	1,031	50	1,927	1,472	76	↑ 13
Computer and Information Sciences	2,833	1,519	54	3,468	1,447	42	4,303	2,806	65	↑ 12
Education	5,060	3,088	61	4,905	2,365	48	3,887	2,960	76	↑ 15

These are estimated voting rates by field of study, and the numbers we used to calculate the field of study rates. For an explanation of CIP codes, please see our FAQ.* There are roughly 8,000 fields of study among U.S. colleges and universities, so we provide rates for condensed categories.

*<https://tufts.app.box.com/v/idhe-nslve-report-faq>

By Field of Study

FIELDS	2016			2018			2020			2016-2020 Change (p.p)
	Enrolled	Voted	Rate	Enrolled	Voted	Rate	Enrolled	Voted	Rate	
Engineering and Engineering Technologies	6,931	3,741	54	7,905	3,163	40	8,455	5,606	66	↑ 12
English Language and Literature	1,144	827	72	1,255	768	61	1,231	946	77	↑ 5
Foreign Languages, Literatures, and Lingui..	74	44	59	63	30	48	52	34	65	↑ 6
Health Professions	9,283	5,456	59	9,522	4,339	46	9,485	6,888	73	↑ 14
History	478	347	73	513	341	66	485	392	81	↑ 8
Law Enforcement, Firefighting, and Protec..	1,798	1,004	56	2,028	858	42	2,202	1,559	71	↑ 15
Legal Professions and Studies	701	436	62	714	350	49	756	565	75	↑ 13
Liberal Arts and Sciences, and Humanities	537	350	65	464	234	50	362	265	73	↑ 8
Mathematics and Statistics	496	290	58	503	228	45	575	393	68	↑ 10
Multi/Interdisciplinary Studies	1,851	1,241	67	1,788	940	53	1,499	1,049	70	↑ 3
Natural Resources and Conservation	–	–	–	219	130	59	410	329	80	–
Parks, Recreation, Leisure, and Fitness Stu..	71	28	39	56	15	27	1,038	725	70	↑ 30
Philosophy and Religious Studies	117	74	63	131	64	49	128	95	74	↑ 11
Physical Sciences	654	336	51	665	307	46	742	485	65	↑ 14

By Field of Study

FIELDS	2016			2018			2020			2016-2020	
	Enrolled	Voted	Rate	Enrolled	Voted	Rate	Enrolled	Voted	Rate	Change (p.p)	
Psychology	3,698	2,269	61	4,044	1,937	48	4,671	3,400	73	↑	11
Public Administration and Social Service Professions	1,190	847	71	1,392	826	59	1,544	1,172	76	↑	5
Social Sciences	1,949	1,329	68	2,141	1,247	58	2,243	1,727	77	↑	9
Visual and Performing Arts	3,533	2,195	62	4,241	2,134	50	4,871	3,738	77	↑	15
Unknown	63	20	32	-	-	-	-	-	-	-	-

About This Report

Thank you for participating in the National Study of Learning, Voting, and Engagement.

Since NSLVE's launch in 2013, nearly 1,200 colleges and universities have signed up to receive their voting rates for the 2012, 2014, 2016, 2018, and 2020 federal elections.

Along with others, your institution's participation in this study has allowed us to build a robust database of over 50 million college student records, about 10 million for each election year, that serve as a foundation for innovative research on college student political learning and engagement in democracy.

NSLVE is a signature initiative of the Institute for Democracy and Higher Education (IDHE) at Tufts University's Jonathan M. Tisch College of Civic Life. The mission of IDHE is to shift college and university priorities and culture to advance political learning, agency, and equity. We achieve our mission through research, resource development, technical assistance, and advocacy.

About the Data

The voter registration and voting rates in this report reflect the percentage of your institution's students who were eligible to vote and who actually voted in the 2016, 2018, and 2020 elections.

These results are based on enrollment records your institution submitted to the National Student Clearinghouse (NSC) and publicly available voting files collected by L2 Political.

Enrollment lists are adjusted by deducting students under age 18 (at the time of the election), people identified as non-degree seeking and those identified by campuses as "nonresident aliens" (NRAs) (the federal government's category for mostly international students). Unfortunately, not all campuses report NRAs to NSC. For those campuses, we use IPEDS to calculate the number of NRA students on each campus and adjust NSC enrollment numbers to estimate the number of students to remove. We also quality check NRA removals by verifying that there is little to no discrepancy between the number of international students reported by the campus to IPEDS and to NSC. We cannot adjust subgroup analyses absent identification of NRAs verified by the process above. We welcome closer partnerships with individual colleges and universities to provide more accurate rates. For more on the data and the matching process, see our FAQ on Campus Reports.

University Of Central Florida

Thank you for the work you do to improve your students' political learning and engagement. We hope that you find your NSLVE report useful. For up-to-date news on NSLVE data, resources, and to sign up for our newsletter visit: <https://idhe.tufts.edu>.

References: IDHE encourages report recipients to share this report as broadly as possible, including posting it on the college or university's website. When doing so, please use the following citation: Institute for Democracy & Higher Education: National Study of Learning, Voting and Engagement. (2021). 2016, 2018, and 2020 report for _____ [name of institution]. Medford, MA.



Barnum Hall
163 Packard Ave.
Medford, MA 02155

tischcollege@tufts.edu
617.627.3453



Institute for Democracy & Higher Education:
National Study of Learning, Voting, and Engagement
Barnum Hall, Medford, MA 02155

Follow Us on Twitter: @TuftsIDHE
NSLVE@tufts.edu
617.627.0620