



October 2021

Student Voting Rates for University of North Georgia

2020 NSLVE Campus Report

October 2021

Dear Colleagues:

We are pleased to send this tailored report containing your students' voting rates for 2020. This report contains three years of relevant topline data: 2016, 2018, and 2020. As always, we disaggregate the data so you can better identify and address gaps in participation.

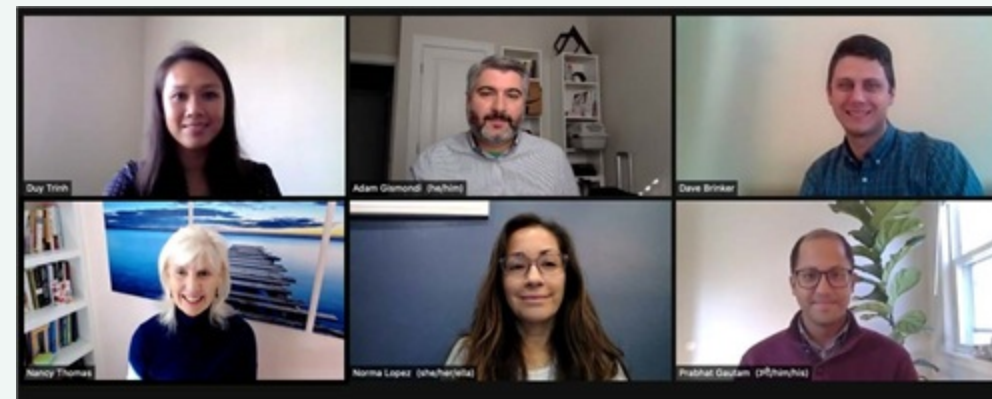
College and university students participated in record-breaking numbers in the 2020 election. In 2016, the Average Institutional Voting Rate was 53%. This year, it jumped to 66%. We encourage you to review Democracy Counts 2020, our most recent national report.

As in past years, we urge you to share this report widely and strategically, particularly with faculty who, in 2020, were often the most consistent communicators with students about ever-changing voting conditions and deadlines. We also urge you to review our recommendations for engaging elections to cultivate a robust and healthy campus climate for political engagement, discourse, equity, and participation: Election Imperatives (2019) and the more recent Election Imperatives: A Time of Physical Distancing and Social Action. Since "pervasive political discussions" and attentiveness to the campus culture around speech and academic freedom are among our top recommendations, we direct you to our discussion guides on talking about your NSLVE report, on free speech and inclusion, and on hot topics, our Making Sense of ... guides.

Finally, we always encourage you to work with us. Help us help you get better data by reaching out. Email IDHE@Tufts.edu for more information. And as always, watch your inbox for our periodic newsletter, IDHE Update, for announcements about upcoming releases and new resources.

Congratulations on engaging your students in the 2020 election. Remember, student political learning is a year-round objective. Elections may be episodic, but student political engagement should not be.

All the Best,
IDHE Team



(Top Row from left) Duy Trinh, Program Administrator; Adam Gismondi, Director of Impact; Dave Brinker, Senior Researcher;
(Bottom Row from left) Nancy Thomas, Director; Norma López, Postdoctoral Scholar; Prabhat Gautam, Data Manager.

We also want to acknowledge and thank **Syed Golam Mohaimen, M.S. student in Data Science at Tufts University** for his contributions toward the creation of these reports.

In This Report

This report presents data on student voter participation rates for your campus. The topline counts on page 5 tells you how many students voted, but we encourage you to look carefully at the data on subsequent pages to learn who voted. Data are presented in the form of vessel charts, overlapping donut charts, and tables.



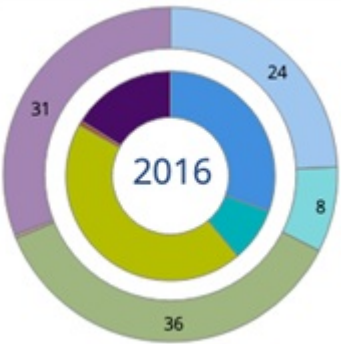
Vessel Chart

This chart shows rates out of 100%, with arrows to the right of each bar representing relevant national averages (medians), which you can find in IDHE's national report Democracy Counts 2020.

	2014			2018			2014-2018 Change (p.p.)
	Enrolled	Voted	Rate (%)	Enrolled	Voted	Rate (%)	
Asian	-	-	-	-	-	-	-
American Indian/ Alaska Native	-	-	-	-	-	-	-
Black	-	-	-	-	-	-	-
Hispanic	-	-	-	-	-	-	-

Tables

The tables show, on the left-side columns, the numbers of students and the rates from 2016, 2018, and 2020. On the left-side, percentage point (p.p.) changes between 2016 and 2020. A red down arrow indicates a decrease, a green up arrow indicates an increase, and a yellow arrow pointing to the right indicates no change. "-" in these tables indicates that the data is unavailable/missing, or is available for 10 or less students.



Overlapping Donut Chart

This chart is used to show the breakdown of vote method utilization (page 10), with the outer ring showing your campus method utilization and the inner ring showing the national breakdown. These are described in percentages.

Voting, Registration and Yield Rates

YOUR INSTITUTION

72.3%

2020 Voting Rate

+14.9

Change From 2016

ALL INSTITUTIONS

66%

2020 Voting Rate

REGISTRATION RATE

80.5%
2016

83.1%
2018

91.7%
2020

The **Registration Rate** is the percent of your voting-eligible students who registered to vote.

VOTING RATE OF REGISTERED STUDENTS

71.3%
2016

54.8%
2018

78.9%
2020

The **Voting Rate of Registered Students** is the percent of registered students who voted on Election Day. We often refer to this as the “yield” rate.

VOTING RATE

57.4%
2016

45.6%
2018

72.3%
2020

The **Voting Rate** is the percentage of eligible students who voted on Election Day. The voting rate is also the product of the registration and yield rates.

Looking Closer

Voting and Registration Rates

	2016	2018	2020	2016-2020 Change (p.p.)
Total Student Enrollment	17,270	18,372	18,070	↑ 800
(Age under 18/Unknown)	–	–	–	–
(IPEDS estimated non-resident aliens)	272	318	233	↓ -39
(FERPA records blocked)	–	–	–	–
(Non-Degree Seeking Students)	24	–	–	–
Total eligible voters	16,970	18,052	17,832	↑ 862
Number of students who registered	13,659	15,007	16,348	↑ 2,689
Number of students who voted	9,738	8,224	12,891	↑ 3,153
Registration Rate %	80	83	92	↑ 11
Voting Rate of Registered Students %	71	55	79	↑ 8
Voting Rate %	57	46	72	↑ 15

This page provides the numbers we used to calculate your voting, registration, and yield rates. The sub-categories under total student enrollment are the adjustments that we make to account for students who are ineligible to vote due to age or citizenship status. We also exclude, when correctly flagged, students who are not pursuing degrees.

We use IPEDS-derived estimates of NRAs when institutions do not submit non-resident alien status data to NSC, or we cannot verify the accuracy of the reported counts. This estimate is given by "IPEDS estimated non-resident aliens" on this page. If you believe the number of international students reported on this report is incorrect, you can manually adjust your institution's voting rates by using our recalculation tool. <https://id-he.tufts.edu/nsive/nsive-recalculation-tool>.

By Institution Types

2016 Voting Rate for
All Institutions

53%

HIGH
82%

LOW
13%

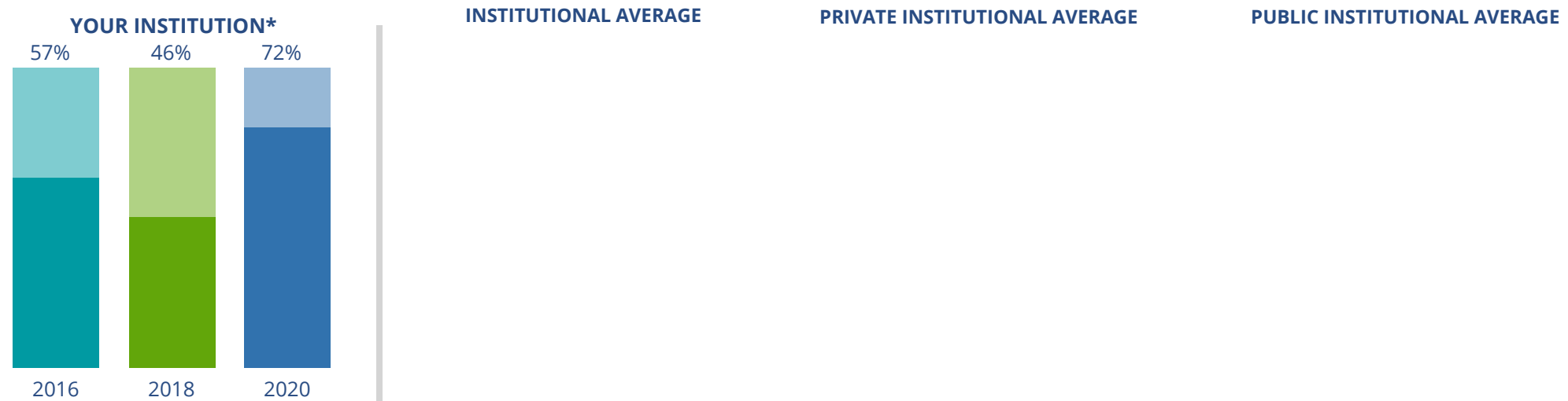
2020 Voting Rate for
All Institutions

66%

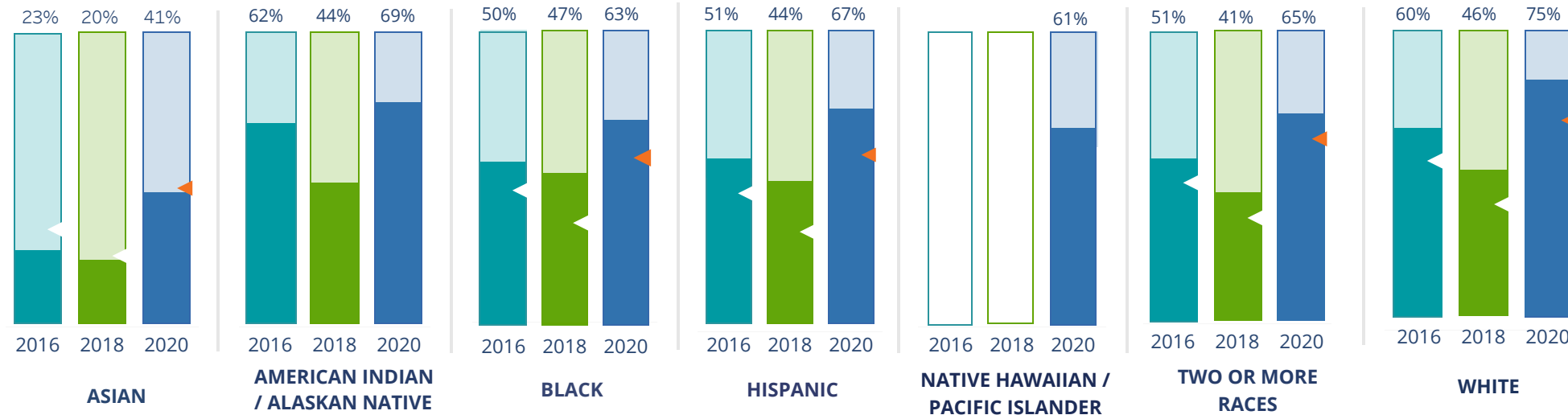
HIGH
89%

LOW
19%

These are estimated voting rates of your institution compared to the average voting rates of similar institutions in NSLVE. *"Your Institution" chart is presented at a different scale.



By Race / Ethnicity



These are estimated voting rates for race / ethnicity groups. These classifications are provided by campuses and are obtained following race reporting procedures* defined by the National Center for Education Statistics of the Institute of Education Sciences (IES). Please see our FAQ for more detail on why we cannot report national benchmark for some of the demographic groups:

<https://tufts.app.box.com/v/idhe-nsve-report-faq>

If you notice unavailable/missing data in this page, it could mean any of the following for your institution: (i) does not report this data; (ii) did not provide this data in past years; (iii) does not separately submit data for one or more of the demographic groups, or (iv) the data is reported for 10 or fewer students.

* <https://nces.ed.gov/ipeds/report-your-data/race-ethnicity-collecting-data-for-reporting-purposes>

Looking Closer

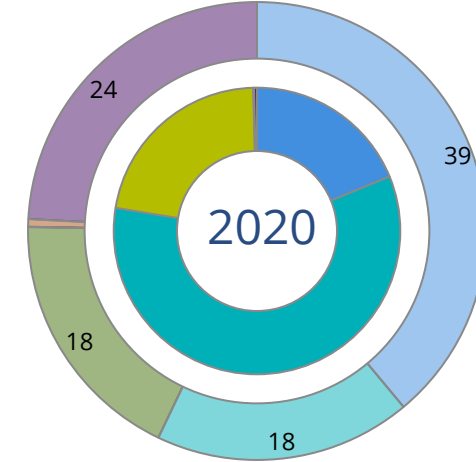
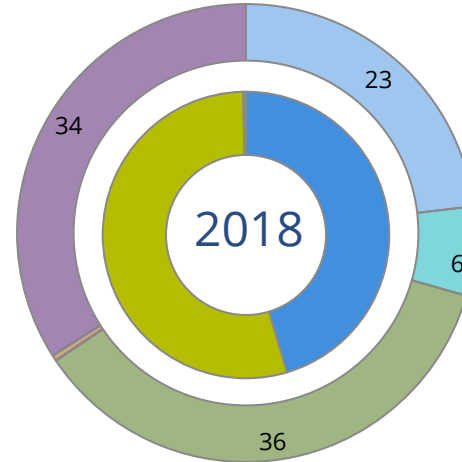
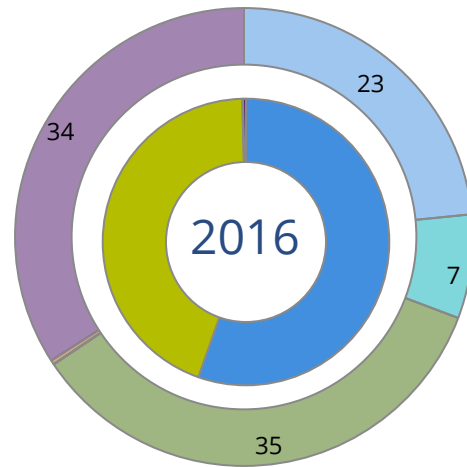
By Race/Ethnicity

This page provides the numbers we used to calculate race / ethnicity group voting rates. We include the counts of students and the change in rates between the two most recent comparable election years. If you notice unavailable/missing data in this page, it could mean any of the following for your institution: (i) does not report this data; (ii) did not provide this data in past years; (iii) does not separately submit data for one or more of the demographic groups, or (iv) the data is reported for 10 or fewer students.

	2016			2018			2020			2016-2020 Change (p.p)
	Enrolled	Voted	Rate	Enrolled	Voted	Rate	Enrolled	Voted	Rate	
Asian	564	129	23	667	133	20	664	271	41	↑ 18
American Indian/ Alaska Native	37	23	62	39	17	44	32	22	69	↑ 7
Black	782	392	50	778	366	47	782	493	63	↑ 13
Hispanic	1,958	1,003	51	2,467	1,085	44	2,674	1,777	66	↑ 15
Native Hawaiian/ Pacific Islander	17	-	-	30	-	-	18	11	61	-
2 or More Races	514	262	51	608	246	40	616	402	65	↑ 14
White	12,923	7,694	60	13,427	6,202	46	13,024	9,746	75	↑ 15
Race Unknown	436	231	53	338	169	50	239	169	71	↑ 18

By Voting Method

■ Not-In-Person
 ■ Early Vote
 ■ In-Person
 ■ Other
 ■ Provisional
 ■ Unknown



	2016		2018		2020		2016-2020	
	Voted	Rate	Voted	Rate	Voted	Rate	Change (p.p.)	
Early Vote	–	–	–	–	7,585	59	–	
In-Person on Election Day	4,300	44	4,464	54	2,835	22	-22	↓
Not-In-Person	5,398	55	3,734	45	2,425	19	-37	↓
Other	–	–	–	–	–	–	–	
Provisional	14	0	13	0	14	0	0	→
Voting Method Unknown	23	0	–	–	32	0	0	→

These are estimated rates for vote method utilization, the number of students utilizing each method, and the percent of students utilizing each method. Not all U.S. states provide information on vote method; voting method for voter files from these states are classified "Voting Method Unknown." For a list of these states, see our FAQ. <https://idhe.tufts.edu/nsive/nsive-faq#CampusReports>

By Age Group

	2016	2018	2020
18-21	55%	42%	72%
22-24	57%	46%	69%
25-29	56%	48%	65%
30-39	62%	55%	73%
40-49	74%	70%	84%
50+	83%	81%	87%

Voting is habit-forming and young voters will usually continue as voters in subsequent elections. Also, young voters are more likely to be contacted by campaigns and are visible, and therefore significant, to elected officials. While in the past, we have seen voting rates increase across age groups, in recent cycles, the most significant increases have been among first-time and the youngest voters. Some colleges serve primarily young students, traditionally viewed as students in the 18-21 or 22-24 categories here. Others have much higher numbers of enrolled older undergraduate or graduate students.

Looking Closer

By Age Group

Here, we provide the numbers of students in each age category and the voting rates for each group. These are based on the student's age on the day of the election, as calculated by the National Student Clearinghouse using data from student enrollment records.

	2016			2018			2020			2016-2020 Change (p.p)
	Enrolled	Voted	Rate	Enrolled	Voted	Rate	Enrolled	Voted	Rate	
18-21	11,454	6,320	55	12,473	5,290	42	12,324	8,886	72	↑ 17
22-24	3,123	1,783	57	3,309	1,513	46	3,328	2,304	69	↑ 12
25-29	1,421	794	56	1,312	629	48	1,250	815	65	↑ 9
30-39	734	457	62	730	399	55	719	522	73	↑ 10
40-49	343	254	74	331	232	70	271	227	84	↑ 10
50+	156	130	83	199	161	81	157	137	87	↑ 4

Looking Closer

By Sex

	2016			2018			2020			2016-2020	
	Enrolled	Voted	Rate	Enrolled	Voted	Rate	Enrolled	Voted	Rate	Change (p.p)	
Female	9,563	5,603	59	10,410	4,802	46	10,421	7,611	73	↑	14
Male	7,668	4,135	54	7,944	3,422	43	7,628	5,280	69	↑	15

These are estimated voting rates for sex groups and the numbers we used to calculate their voting rates. These classifications are provided by campuses and are obtained following the reporting procedures defined by the National Center for Education Statistics (NCES) of the Institute of Education Sciences (IES). Presently, NCES requires institutions to report students as “Male” or “Female” only.*

If you notice missing data in this page, it could mean any of the following for your institution: (i) does not report this data; (ii) did not provide this data in past years; (iii) does not separately submit data for one or more of the demographic groups, or (iv) the data is reported for 10 or fewer students.

*<https://surveys.nces.ed.gov/ipeds/public/survey-materials/faq?faqid=11>

Looking Closer

By Education Level / Undergraduate Class Year

	2016			2018			2020			2016-2020	
	Enrolled	Voted	Rate (%)	Enrolled	Voted	Rate (%)	Enrolled	Voted	Rate (%)	Change (p.p)	
EDUCATION LEVEL											
Undergraduate	16,725	9,383	56	17,671	7,830	44	17,262	12,276	71	↑ 15	
Graduate	499	351	70	620	346	56	703	544	77	↑ 7	
Class Unknown	–	–	–	63	43	68	84	62	74	–	
CLASS YEAR											
First Year	–	–	–	–	–	–	–	–	–	–	
Second Year	–	–	–	–	–	–	–	–	–	–	
Upper Level	–	–	–	–	–	–	–	–	–	–	
ENROLLMENT STATUS											
Full-time	12,551	7,031	56	13,106	5,636	43	12,820	9,251	72	↑ 16	
Part-time	4,680	2,707	58	5,248	2,588	49	5,229	3,640	70	↑ 12	

These are estimated voting rates by Education Level (undergraduate/graduate), Class Year, and Enrollment Status (full-time/part-time), and the numbers we used to calculate these rates.

If you notice missing data in this page, it could mean any of the following for your institution: (i) does not report this data; (ii) did not provide this data in past years; (iii) does not separately submit data for one or more of the demographic groups, or (iv) the data is reported for 10 or fewer students.

By Field of Study

FIELDS	2016			2018			2020			2016-2020
	Enrolled	Voted	Rate	Enrolled	Voted	Rate	Enrolled	Voted	Rate	Change (p.p)
Area, Ethnic, Cultural, and Gender Studies	–	–	–	–	–	–	25	16	64	–
Biological and Biomedical Sciences	1,106	584	53	1,232	464	38	1,224	837	68	↑ 16
Business, Management, and Marketing	1,962	1,142	58	2,141	980	46	2,342	1,740	74	↑ 16
Communication and Journalism	278	188	68	399	231	58	467	371	79	↑ 12
Computer and Information Sciences	438	214	49	592	235	40	770	531	69	↑ 20
Education	1,174	737	63	926	451	49	1,038	820	79	↑ 16
Engineering and Engineering Technologies	–	–	–	–	–	–	11	–	–	–



These are estimated voting rates by field of study, and the numbers we used to calculate the field of study rates. For an explanation of CIP codes, please see our FAQ.* There are roughly 8,000 fields of study among U.S. colleges and universities, so we provide rates for condensed categories.

*<https://tufts.app.box.com/v/idhe-nslve-report-faq>

By Field of Study

FIELDS	2016			2018			2020			2016-2020 Change (p.p)
	Enrolled	Voted	Rate	Enrolled	Voted	Rate	Enrolled	Voted	Rate	
English Language and Literature	240	149	62	240	108	45	223	175	78	↑ 16
Foreign Languages, Literatures, and Lingui..	152	90	59	130	44	34	123	80	65	↑ 6
Health Professions	1,332	835	63	557	289	52	680	500	74	↑ 11
History	275	169	61	263	154	59	272	219	81	↑ 19
Law Enforcement, Firefighting, and Protec..	514	281	55	517	211	41	642	434	68	↑ 13
Legal Professions and Studies	74	50	68	49	32	65	50	35	70	↑ 2
Liberal Arts and Sciences, and Humanities	7,508	4,052	54	8,441	3,744	44	7,172	4,975	69	↑ 15
Mathematics and Statistics	203	109	54	202	90	45	196	139	71	↑ 17
Multi/Interdisciplinary Studies	–	–	–	–	–	–	–	–	–	–
Natural Resources and Conservation	65	38	58	58	36	62	73	58	79	↑ 21
Parks, Recreation, Leisure, and Fitness Stu..	–	–	–	467	169	36	397	287	72	–
Physical Sciences	431	223	52	432	186	43	377	245	65	↑ 13
Psychology	592	344	58	646	269	42	789	573	73	↑ 15
Public Administration and Social Service P..	101	56	55	152	91	60	136	102	75	↑ 20

By Field of Study

FIELDS	2016			2018			2020			2016-2020	
	Enrolled	Voted	Rate	Enrolled	Voted	Rate	Enrolled	Voted	Rate	Change (p.p)	
Social Sciences	510	324	64	550	268	49	565	400	71		7
Visual and Performing Arts	273	152	56	341	159	47	443	317	72		16
Unknown	-	-	-	19	13	68	25	21	84		-

About This Report

Thank you for participating in the National Study of Learning, Voting, and Engagement.

Since NSLVE's launch in 2013, nearly 1,200 colleges and universities have signed up to receive their voting rates for the 2012, 2014, 2016, 2018, and 2020 federal elections.

Along with others, your institution's participation in this study has allowed us to build a robust database of over 50 million college student records, about 10 million for each election year, that serve as a foundation for innovative research on college student political learning and engagement in democracy.

NSLVE is a signature initiative of the Institute for Democracy and Higher Education (IDHE) at Tufts University's Jonathan M. Tisch College of Civic Life. The mission of IDHE is to shift college and university priorities and culture to advance political learning, agency, and equity. We achieve our mission through research, resource development, technical assistance, and advocacy.

About the Data

The voter registration and voting rates in this report reflect the percentage of your institution's students who were eligible to vote and who actually voted in the 2016, 2018, and 2020 elections.

These results are based on enrollment records your institution submitted to the National Student Clearinghouse (NSC) and publicly available voting files collected by L2 Political.

Enrollment lists are adjusted by deducting students under age 18 (at the time of the election), people identified as non-degree seeking and those identified by campuses as "nonresident aliens" (NRAs) (the federal government's category for mostly international students). Unfortunately, not all campuses report NRAs to NSC. For those campuses, we use IPEDS to calculate the number of NRA students on each campus and adjust NSC enrollment numbers to estimate the number of students to remove. We also quality check NRA removals by verifying that there is little to no discrepancy between the number of international students reported by the campus to IPEDS and to NSC. We cannot adjust subgroup analyses absent identification of NRAs verified by the process above. We welcome closer partnerships with individual colleges and universities to provide more accurate rates. For more on the data and the matching process, see our FAQ on Campus Reports.

CAMPUS REPORT: University of North Georgia

Thank you for the work you do to improve your students' political learning and engagement. We hope that you find your NSLVE report useful. For up-to-date news on NSLVE data, resources, and to sign up for our newsletter visit: <https://idhe.tufts.edu>.

References: IDHE encourages report recipients to share this report as broadly as possible, including posting it on the college or university's website. When doing so, please use the following citation: Institute for Democracy & Higher Education: National Study of Learning, Voting and Engagement. (2021). 2016, 2018, and 2020 report for _____ [name of institution]. Medford, MA.



Barnum Hall
163 Packard Ave.
Medford, MA 02155

tischcollege@tufts.edu
617.627.3453



Institute for Democracy & Higher Education:
National Study of Learning, Voting, and Engagement
Barnum Hall, Medford, MA 02155

Follow Us on Twitter: @TuftsIDHE
NSLVE@tufts.edu
617.627.0620