



October 2021

# **Student Voting Rates for Texas Christian University**

## 2020 NSLVE Campus Report

**October 2021**

**Dear Colleagues:**

We are pleased to send this tailored report containing your students' voting rates for 2020. This report contains three years of relevant topline data: 2016, 2018, and 2020. As always, we disaggregate the data so you can better identify and address gaps in participation.

College and university students participated in record-breaking numbers in the 2020 election. In 2016, the Average Institutional Voting Rate was 53%. This year, it jumped to 66%. We encourage you to review Democracy Counts 2020, our most recent national report.

As in past years, we urge you to share this report widely and strategically, particularly with faculty who, in 2020, were often the most consistent communicators with students about ever-changing voting conditions and deadlines. We also urge you to review our recommendations for engaging elections to cultivate a robust and healthy campus climate for political engagement, discourse, equity, and participation: Election Imperatives (2019) and the more recent Election Imperatives: A Time of Physical Distancing and Social Action. Since "pervasive political discussions" and attentiveness to the campus culture around speech and academic freedom are among our top recommendations, we direct you to our discussion guides on talking about your NSLVE report, on free speech and inclusion, and on hot topics, our Making Sense of ... guides.

Finally, we always encourage you to work with us. Help us help you get better data by reaching out. Email [IDHE@Tufts.edu](mailto:IDHE@Tufts.edu) for more information. And as always, watch your inbox for our periodic newsletter, IDHE Update, for announcements about upcoming releases and new resources.

Congratulations on engaging your students in the 2020 election. Remember, student political learning is a year-round objective. Elections may be episodic, but student political engagement should not be.

All the Best,  
IDHE Team



**(Top Row from left) Duy Trinh, Program Administrator; Adam Gismondi, Director of Impact; Dave Brinker, Senior Researcher;**  
**(Bottom Row from left) Nancy Thomas, Director; Norma López, Postdoctoral Scholar; Prabhat Gautam, Data Manager.**

We also want to acknowledge and thank **Syed Golam Mohaimen, M.S. student in Data Science at Tufts University** for his contributions toward the creation of these reports.

# In This Report

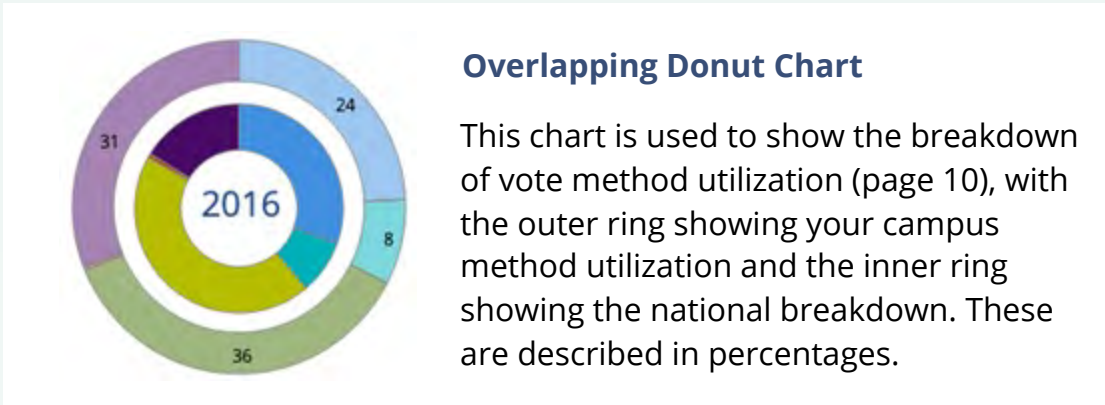
This report presents data on student voter participation rates for your campus. The topline counts on page 5 tells you how many students voted, but we encourage you to look carefully at the data on subsequent pages to learn who voted. Data are presented in the form of vessel charts, overlapping donut charts, and tables.



	2014			2018			2014-2018 Change (p.p.)
	Enrolled	Voted	Rate (%)	Enrolled	Voted	Rate (%)	
Asian	-	-	-	-	-	-	-
American Indian/ Alaska Native	-	-	-	-	-	-	-
Black	-	-	-	-	-	-	-
Hispanic	-	-	-	-	-	-	-

## Tables

The tables show, on the left-side columns, the numbers of students and the rates from 2016, 2018, and 2020. On the left-side, percentage point (p.p.) changes between 2016 and 2020. A red down arrow indicates a decrease, a green up arrow indicates an increase, and a yellow arrow pointing to the right indicates no change. "-" in these tables indicates that the data is unavailable/missing, or is available for 10 or less students.



# Voting, Registration and Yield Rates

YOUR INSTITUTION

67.8%

2020 Voting Rate

+27.2

Change From 2016

ALL INSTITUTIONS

66%

2020 Voting Rate

REGISTRATION RATE

Year	Rate
2016	68.4%
2018	78.3%
2020	88.1%

The **Registration Rate** is the percent of your voting-eligible students who registered to vote.

VOTING RATE OF REGISTERED STUDENTS

Year	Rate
2016	59.4%
2018	45.9%
2020	77.0%

The **Voting Rate of Registered Students** is the percent of registered students who voted on Election Day. We often refer to this as the “yield” rate.

VOTING RATE

Year	Rate
2016	40.6%
2018	35.9%
2020	67.8%

The **Voting Rate** is the percentage of eligible students who voted on Election Day. The voting rate is also the product of the registration and yield rates.

# Looking Closer

## Voting and Registration Rates

	2016	2018	2020	2016-2020 Change (p.p.)
Total Student Enrollment	10,394	11,002	11,425	↑ 1,031
(Age under 18/Unknown)	–	–	–	–
(IPEDS estimated non-resident aliens)	513	568	474	↓ -40
(FERPA records blocked)	172	193	273	↑ 101
(Non-Degree Seeking Students)	–	–	86	–
Total eligible voters	9,706	10,239	10,592	↑ 886
Number of students who registered	6,638	8,014	9,331	↑ 2,693
Number of students who voted	3,940	3,680	7,181	↑ 3,241
Registration Rate %	68	78	88	↑ 20
Voting Rate of Registered Students %	59	46	77	↑ 18
Voting Rate %	41	36	68	↑ 27

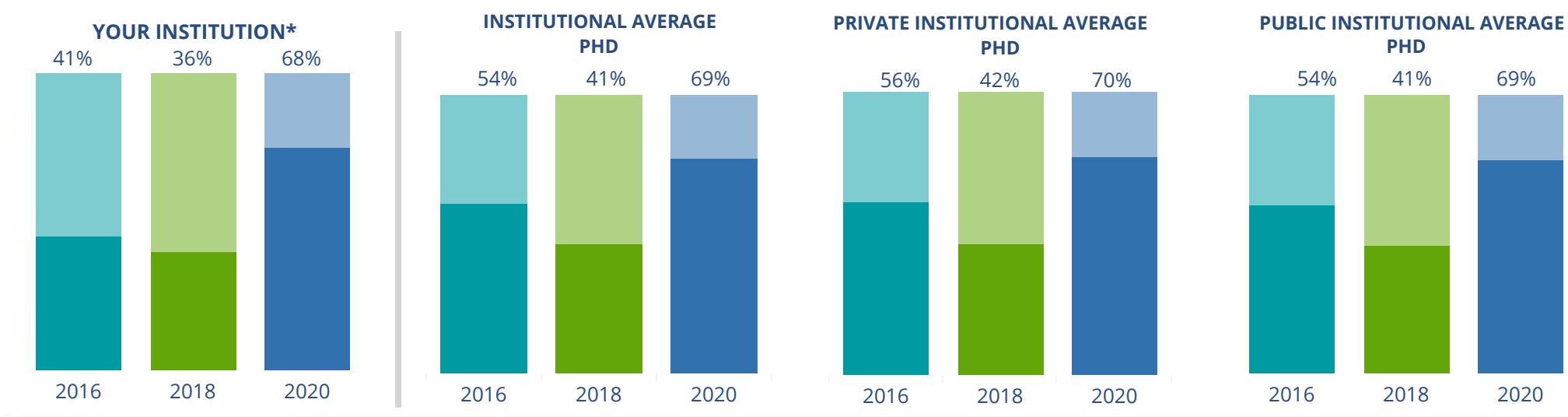
**This page provides the numbers we used to calculate your voting, registration, and yield rates.** The sub-categories under total student enrollment are the adjustments that we make to account for students who are ineligible to vote due to age or citizenship status. We also exclude, when correctly flagged, students who are not pursuing degrees.

We use IPEDS-derived estimates of NRAs when institutions do not submit non-resident alien status data to NSC, or we cannot verify the accuracy of the reported counts. This estimate is given by "IPEDS estimated non-resident aliens" on this page. If you believe the number of international students reported on this report is incorrect, you can manually adjust your institution's voting rates by using our recalculation tool. <https://id-he.tufts.edu/nsive/nsive-recalculation-tool>.

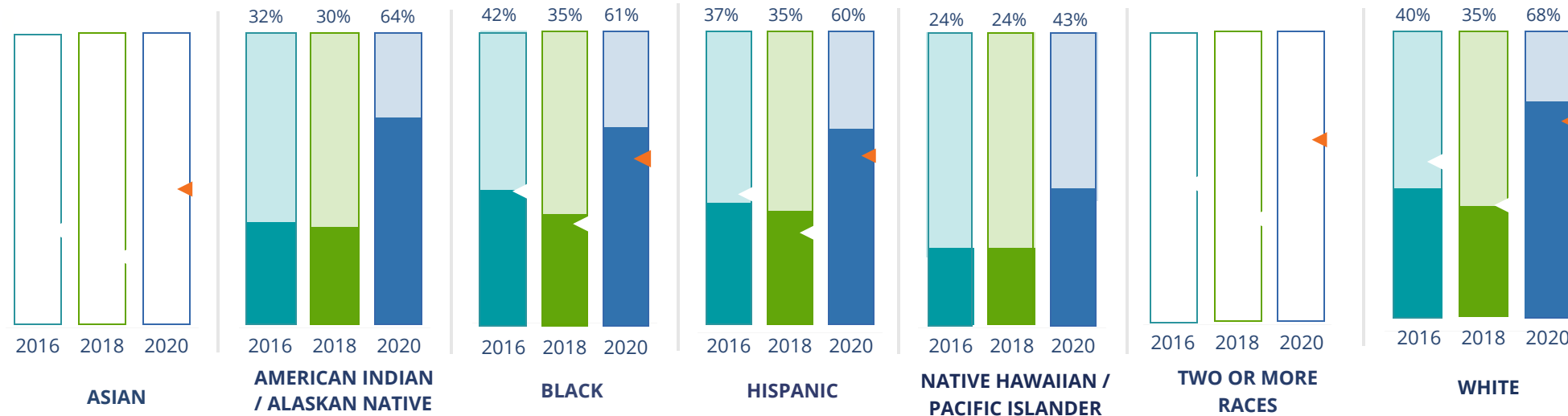
# By Institution Types



These are estimated voting rates of your institution compared to the average voting rates of similar institutions in NSLVE. \*"Your Institution" chart is presented at a different scale.



## By Race / Ethnicity



**These are estimated voting rates for race / ethnicity groups.** These classifications are provided by campuses and are obtained following race reporting procedures\* defined by the National Center for Education Statistics of the Institute of Education Sciences (IES). Please see our FAQ for more detail on why we cannot report national benchmark for some of the demographic groups:

<https://tufts.app.box.com/v/idhe-nsve-report-faq>

If you notice unavailable/missing data in this page, it could mean any of the following for your institution: (i) does not report this data; (ii) did not provide this data in past years; (iii) does not separately submit data for one or more of the demographic groups, or (iv) the data is reported for 10 or fewer students.

\* <https://nces.ed.gov/ipeds/report-your-data/race-ethnicity-collecting-data-for-reporting-purposes>



# Looking Closer

## By Race/Ethnicity

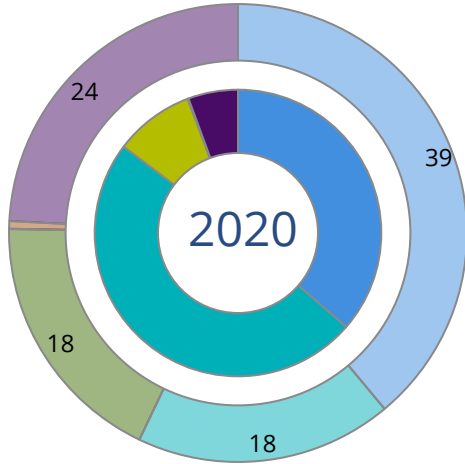
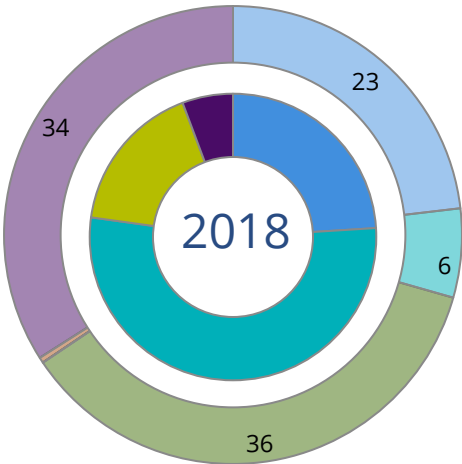
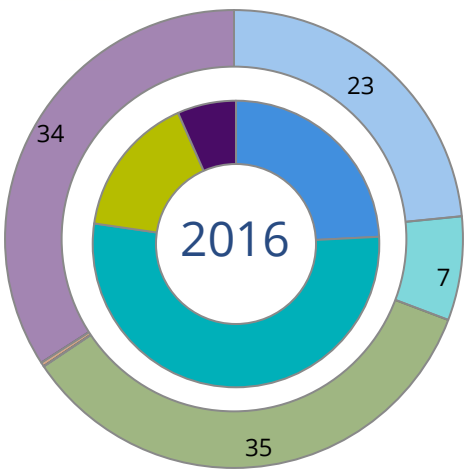
**This page provides the numbers we used to calculate race / ethnicity group voting rates.** We include the counts of students and the change in rates between the two most recent comparable election years. If you notice unavailable/missing data in this page, it could mean any of the following for your institution: (i) does not report this data; (ii) did not provide this data in past years; (iii) does not separately submit data for one or more of the demographic groups, or (iv) the data is reported for 10 or fewer students.

	2016			2018			2020			2016-2020
	Enrolled	Voted	Rate	Enrolled	Voted	Rate	Enrolled	Voted	Rate	Change (p.p)
Asian	-	-	-	-	-	-	-	-	-	-
American Indian/ Alaska Native	82	26	32	83	25	30	50	32	64	↑ 32
Black	537	225	42	658	227	34	695	426	61	↑ 19
Hispanic	1,125	421	37	1,360	479	35	1,168	703	60	↑ 23
Native Hawaiian/ Pacific Islander	431	103	24	494	119	24	515	221	43	↑ 19
2 or More Races	-	-	-	-	-	-	-	-	-	-
White	7,529	3,045	40	7,783	2,731	35	8,361	5,689	68	↑ 28
Race Unknown	514	120	23	428	99	23	272	110	40	↑ 17



# By Voting Method

Not-In-Person Early Vote In-Person Other Provisional Unknown



	2016		2018		2020		2016-2020	
	Voted	Rate	Voted	Rate	Voted	Rate	Change (p.p.)	
Early Vote	2,094	53	1,957	53	3,510	49	-4	↓
In-Person on Election Day	635	16	628	17	643	9	-7	↓
Not-In-Person	953	24	882	24	2,617	36	12	↑
Other	-	-	-	-	-	-	-	
Provisional	-	-	-	-	-	-	-	
Voting Method Unknown	258	7	213	6	407	6	-1	↓

These are estimated rates for vote method utilization, the number of students utilizing each method, and the percent of students utilizing each method. Not all U.S. states provide information on vote method; voting method for voter files from these states are classified "Voting Method Unknown." For a list of these states, see our FAQ. <https://idhe.tufts.edu/nsive/nsive-faq#CampusReports>

## By Age Group

	2016	2018	2020
18-21	35%	31%	65%
22-24	36%	33%	63%
25-29	46%	41%	61%
30-39	56%	51%	66%
40-49	68%	67%	81%
50+	85%	78%	89%

**Voting is habit-forming and young voters will usually continue as voters in subsequent elections.** Also, young voters are more likely to be contacted by campaigns and are visible, and therefore significant, to elected officials. While in the past, we have seen voting rates increase across age groups, in recent cycles, the most significant increases have been among first-time and the youngest voters. Some colleges serve primarily young students, traditionally viewed as students in the 18-21 or 22-24 categories here. Others have much higher numbers of enrolled older undergraduate or graduate students.

# Looking Closer

## By Age Group

Here, we provide the numbers of students in each age category and the voting rates for each group. These are based on the student's age on the day of the election, as calculated by the National Student Clearinghouse using data from student enrollment records.

	2016			2018			2020			2016-2020 Change (p.p)
	Enrolled	Voted	Rate	Enrolled	Voted	Rate	Enrolled	Voted	Rate	
18-21	6,999	2,458	35	7,490	2,295	31	7,863	5,115	65	↑ 30
22-24	1,518	546	36	1,626	532	33	1,647	1,031	63	↑ 27
25-29	740	337	46	752	309	41	708	431	61	↑ 15
30-39	600	334	56	600	307	51	561	369	66	↑ 10
40-49	249	170	68	230	153	67	194	157	81	↑ 13
50+	112	95	85	108	84	78	88	78	89	↑ 4

# Looking Closer

## By Sex

	2016			2018			2020			2016-2020	
	Enrolled	Voted	Rate	Enrolled	Voted	Rate	Enrolled	Voted	Rate	Change (p.p)	
Female	6,082	2,479	41	6,312	2,321	37	6,547	4,498	69	↑	28
Male	4,134	1,460	35	4,494	1,359	30	4,510	2,682	59	↑	24

**These are estimated voting rates for sex groups and the numbers we used to calculate their voting rates.** These classifications are provided by campuses and are obtained following the reporting procedures defined by the National Center for Education Statistics (NCES) of the Institute of Education Sciences (IES). Presently, NCES requires institutions to report students as “Male” or “Female” only.\*

If you notice missing data in this page, it could mean any of the following for your institution: (i) does not report this data; (ii) did not provide this data in past years; (iii) does not separately submit data for one or more of the demographic groups, or (iv) the data is reported for 10 or fewer students.

\*<https://surveys.nces.ed.gov/ipeds/public/survey-materials/faq?faqid=11>

# Looking Closer

## By Education Level / Undergraduate Class Year

	2016			2018			2020			2016-2020	
	Enrolled	Voted	Rate (%)	Enrolled	Voted	Rate (%)	Enrolled	Voted	Rate (%)	Change (p.p)	
EDUCATION LEVEL											
Undergraduate	6,875	2,399	35	7,673	2,525	33	9,371	6,026	64	↑	29
Graduate	1,626	915	56	1,551	765	49	1,688	1,153	68	↑	12
Class Unknown	1,717	599	35	1,582	375	24	-	-	-	-	-
CLASS YEAR											
First Year	1,617	40	639	1,898	26	497	1,975	62	1,225	↑	23
Second Year	2,147	42	895	2,129	29	611	2,231	64	1,433	↑	23
Upper Level	4,660	31	1,437	5,071	35	1,757	5,166	65	3,369	↑	34
ENROLLMENT STATUS											
Full-time	9,774	3,718	38	10,362	3,467	33	10,736	6,953	65	↑	27
Part-time	444	222	50	444	213	48	325	228	70	↑	20

These are estimated voting rates by Education Level (undergraduate/graduate), Class Year, and Enrollment Status (full-time/part-time), and the numbers we used to calculate these rates.

If you notice missing data in this page, it could mean any of the following for your institution: (i) does not report this data; (ii) did not provide this data in past years; (iii) does not separately submit data for one or more of the demographic groups, or (iv) the data is reported for 10 or fewer students.

## By Field of Study

FIELDS	2016			2018			2020			2016-2020 RateChange (p.p)
	Enrolled	Voted	Rate	Enrolled	Voted	Rate	Enrolled	Voted	Rate	
Area, Ethnic, Cultural, and Gender Studies	-	-	-	-	-	-	24	21	88	-
Biological and Biomedical Sciences	613	246	40	631	219	35	700	484	69	↑ 29
Business, Management, and Marketing	2,615	893	34	2,767	838	30	2,951	1,876	64	↑ 29
Communication and Journalism	1,038	366	35	1,190	373	31	1,135	747	66	↑ 31
Computer and Information Sciences	169	45	27	301	72	24	278	142	51	↑ 24
Education	607	314	52	645	297	46	683	498	73	↑ 21
Engineering and Engineering Technologies	246	94	38	286	72	25	258	142	55	↑ 17

**These are estimated voting rates by field of study, and the numbers we used to calculate the field of study rates.** For an explanation of CIP codes, please see our FAQ.\* There are roughly 8,000 fields of study among U.S. colleges and universities, so we provide rates for condensed categories.

\*<https://tufts.app.box.com/v/idhe-nslve-report-faq>

## By Field of Study

FIELDS	2016			2018			2020			2016-2020 Change (p.p)
	Enrolled	Voted	Rate	Enrolled	Voted	Rate	Enrolled	Voted	Rate	
English Language and Literature	165	88	53	147	67	46	138	104	75	↑ 22
Foreign Languages, Literatures, and Lingui..	25	–	–	23	–	–	22	13	59	–
Health Professions	1,508	599	40	1,489	511	34	1,548	1,051	68	↑ 28
History	111	59	53	115	63	55	101	72	71	↑ 18
Law Enforcement, Firefighting, and Protec..	167	55	33	202	72	36	272	175	64	↑ 31
Liberal Arts and Sciences, and Humanities	502	188	37	485	135	28	388	224	58	↑ 20
Mathematics and Statistics	49	18	37	48	12	25	55	34	62	↑ 25
Multi/Interdisciplinary Studies	52	16	31	64	24	38	110	68	62	↑ 31
Natural Resources and Conservation	44	16	36	61	26	43	48	35	73	↑ 37
Parks, Recreation, Leisure, and Fitness Stu..	89	28	31	81	15	19	59	34	58	↑ 26
Philosophy and Religious Studies	28	–	–	35	15	43	35	21	60	–
Physical Sciences	200	77	39	153	53	35	124	68	55	↑ 16
Psychology	372	136	37	402	141	35	446	288	65	↑ 28
Public Administration and Social Service P..	111	63	57	100	27	27	125	73	58	↑ 2



# By Field of Study

FIELDS	2016			2018			2020			2016-2020 Change (p.p)
	Enrolled	Voted	Rate	Enrolled	Voted	Rate	Enrolled	Voted	Rate	
Social Sciences	614	206	34	676	252	37	693	422	61	↑ 27
Visual and Performing Arts	597	246	41	608	226	37	669	436	65	↑ 24
Unknown	30	11	37	55	28	51	42	27	64	↑ 28

# About This Report

## Thank you for participating in the National Study of Learning, Voting, and Engagement.

Since NSLVE's launch in 2013, nearly 1,200 colleges and universities have signed up to receive their voting rates for the 2012, 2014, 2016, 2018, and 2020 federal elections.

Along with others, your institution's participation in this study has allowed us to build a robust database of over 50 million college student records, about 10 million for each election year, that serve as a foundation for innovative research on college student political learning and engagement in democracy.

NSLVE is a signature initiative of the Institute for Democracy and Higher Education (IDHE) at Tufts University's Jonathan M. Tisch College of Civic Life. The mission of IDHE is to shift college and university priorities and culture to advance political learning, agency, and equity. We achieve our mission through research, resource development, technical assistance, and advocacy.

### About the Data

The voter registration and voting rates in this report reflect the percentage of your institution's students who were eligible to vote and who actually voted in the 2016, 2018, and 2020 elections.

These results are based on enrollment records your institution submitted to the National Student Clearinghouse (NSC) and publicly available voting files collected by L2 Political.

Enrollment lists are adjusted by deducting students under age 18 (at the time of the election), people identified as non-degree seeking and those identified by campuses as "nonresident aliens" (NRAs) (the federal government's category for mostly international students). Unfortunately, not all campuses report NRAs to NSC. For those campuses, we use IPEDS to calculate the number of NRA students on each campus and adjust NSC enrollment numbers to estimate the number of students to remove. We also quality check NRA removals by verifying that there is little to no discrepancy between the number of international students reported by the campus to IPEDS and to NSC. We cannot adjust subgroup analyses absent identification of NRAs verified by the process above. We welcome closer partnerships with individual colleges and universities to provide more accurate rates. For more on the data and the matching process, see our FAQ on Campus Reports.

Texas Christian University

Thank you for the work you do to improve your students' political learning and engagement. We hope that you find your NSLVE report useful. For up-to-date news on NSLVE data, resources, and to sign up for our newsletter visit: <https://idhe.tufts.edu>.

References: IDHE encourages report recipients to share this report as broadly as possible, including posting it on the college or university's website. When doing so, please use the following citation: Institute for Democracy & Higher Education: National Study of Learning, Voting and Engagement. (2021). 2016, 2018, and 2020 report for \_\_\_\_\_ [name of institution]. Medford, MA.



Barnum Hall  
163 Packard Ave.  
Medford, MA 02155

tischcollege@tufts.edu  
617.627.3453



Institute for Democracy & Higher Education:  
National Study of Learning, Voting, and Engagement  
Barnum Hall, Medford, MA 02155

Follow Us on Twitter: @TuftsIDHE  
NSLVE@tufts.edu  
617.627.0620