



October 2021

Student Voting Rates for St Petersburg College

2020 NSLVE Campus Report



Jonathan M. Tisch
College of Civic Life



INSTITUTE FOR DEMOCRACY
& HIGHER EDUCATION

October 2021

Dear Colleagues:

We are pleased to send this tailored report containing your students' voting rates for 2020. This report contains three years of relevant topline data: 2016, 2018, and 2020. As always, we disaggregate the data so you can better identify and address gaps in participation.

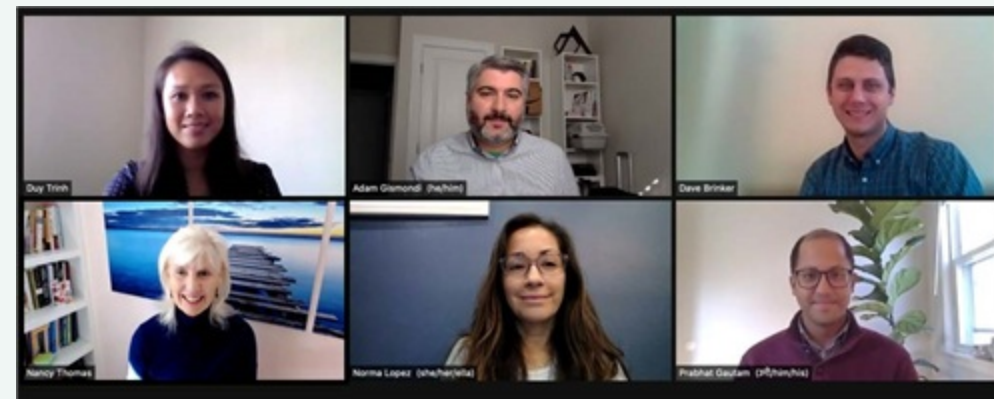
College and university students participated in record-breaking numbers in the 2020 election. In 2016, the Average Institutional Voting Rate was 53%. This year, it jumped to 66%. We encourage you to review Democracy Counts 2020, our most recent national report.

As in past years, we urge you to share this report widely and strategically, particularly with faculty who, in 2020, were often the most consistent communicators with students about ever-changing voting conditions and deadlines. We also urge you to review our recommendations for engaging elections to cultivate a robust and healthy campus climate for political engagement, discourse, equity, and participation: Election Imperatives (2019) and the more recent Election Imperatives: A Time of Physical Distancing and Social Action. Since "pervasive political discussions" and attentiveness to the campus culture around speech and academic freedom are among our top recommendations, we direct you to our discussion guides on talking about your NSLVE report, on free speech and inclusion, and on hot topics, our Making Sense of ... guides.

Finally, we always encourage you to work with us. Help us help you get better data by reaching out. Email IDHE@Tufts.edu for more information. And as always, watch your inbox for our periodic newsletter, IDHE Update, for announcements about upcoming releases and new resources.

Congratulations on engaging your students in the 2020 election. Remember, student political learning is a year-round objective. Elections may be episodic, but student political engagement should not be.

All the Best,
IDHE Team

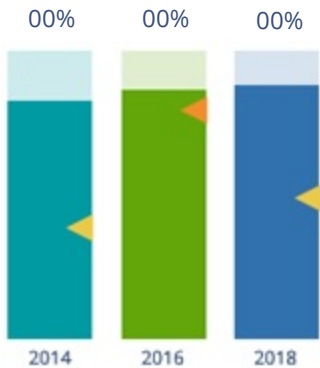


(Top Row from left) Duy Trinh, Program Administrator; Adam Gismondi, Director of Impact; Dave Brinker, Senior Researcher;
(Bottom Row from left) Nancy Thomas, Director; Norma López, Postdoctoral Scholar; Prabhat Gautam, Data Manager.

We also want to acknowledge and thank **Syed Golam Mohaimen, M.S. student in Data Science at Tufts University** for his contributions toward the creation of these reports.

In This Report

This report presents data on student voter participation rates for your campus. The topline counts on page 5 tells you how many students voted, but we encourage you to look carefully at the data on subsequent pages to learn who voted. Data are presented in the form of vessel charts, overlapping donut charts, and tables.



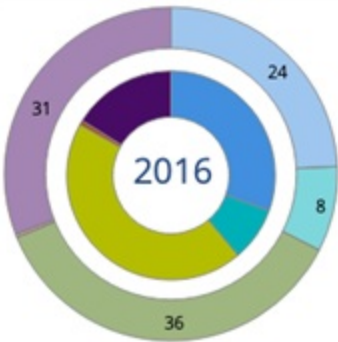
Vessel Chart

This chart shows rates out of 100%, with arrows to the right of each bar representing relevant national averages (medians), which you can find in IDHE's national report Democracy Counts 2020.

	2014			2018			2014-2018 Change (p.p.)
	Enrolled	Voted	Rate (%)	Enrolled	Voted	Rate (%)	
Asian	-	-	-	-	-	-	-
American Indian/ Alaska Native	-	-	-	-	-	-	-
Black	-	-	-	-	-	-	-
Hispanic	-	-	-	-	-	-	-

Tables

The tables show, on the left-side columns, the numbers of students and the rates from 2016, 2018, and 2020. On the left-side, percentage point (p.p.) changes between 2016 and 2020. A red down arrow indicates a decrease, a green up arrow indicates an increase, and a yellow arrow pointing to the right indicates no change. "-" in these tables indicates that the data is unavailable/missing, or is available for 10 or less students.



Overlapping Donut Chart

This chart is used to show the breakdown of vote method utilization (page 10), with the outer ring showing your campus method utilization and the inner ring showing the national breakdown. These are described in percentages.

Voting, Registration and Yield Rates

YOUR INSTITUTION

65.4%

2020 Voting Rate

+6.8

Change From 2016

ALL INSTITUTIONS

66%

2020 Voting Rate

REGISTRATION RATE

Year	Registration Rate
2016	80.7%
2018	79.3%
2020	84.2%

The **Registration Rate** is the percent of your voting-eligible students who registered to vote.

VOTING RATE OF REGISTERED STUDENTS

Year	Voting Rate of Registered Students
2016	72.7%
2018	56.8%
2020	77.7%

The **Voting Rate of Registered Students** is the percent of registered students who voted on Election Day. We often refer to this as the “yield” rate.

VOTING RATE

Year	Voting Rate
2016	58.6%
2018	45.0%
2020	65.4%

The **Voting Rate** is the percentage of eligible students who voted on Election Day. The voting rate is also the product of the registration and yield rates.

Looking Closer

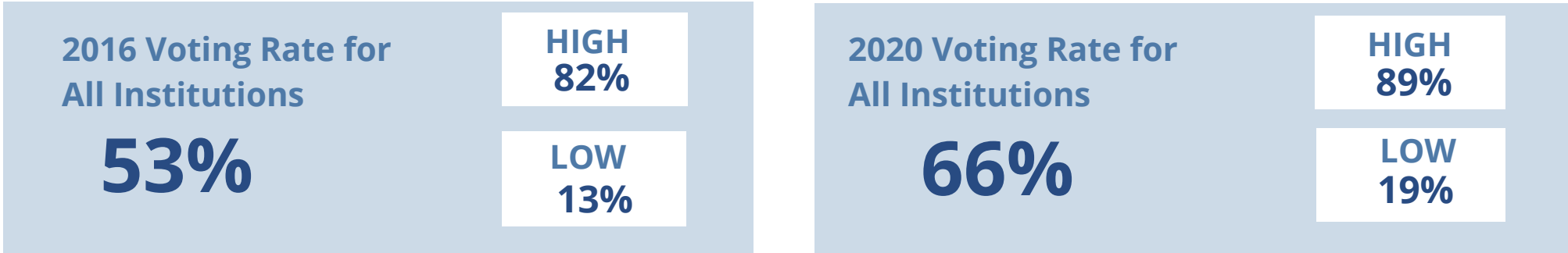
Voting and Registration Rates

	2016	2018	2020	2016-2020 Change (p.p.)
Total Student Enrollment	27,245	25,720	22,766	↓ -4,479
(Age under 18/Unknown)	18	29	21	↑ 3
(IPEDS estimated non-resident aliens)	222	224	172	↓ -50
(FERPA records blocked)	709	527	464	↓ -245
(Non-Degree Seeking Students)	712	619	811	↑ 99
Total eligible voters	25,585	24,322	21,298	↓ -4,287
Number of students who registered	20,635	19,282	17,928	↓ -2,707
Number of students who voted	14,998	10,945	13,937	↓ -1,061
Registration Rate %	81	79	84	↑ 4
Voting Rate of Registered Students %	73	57	78	↑ 5
Voting Rate %	59	45	65	↑ 7

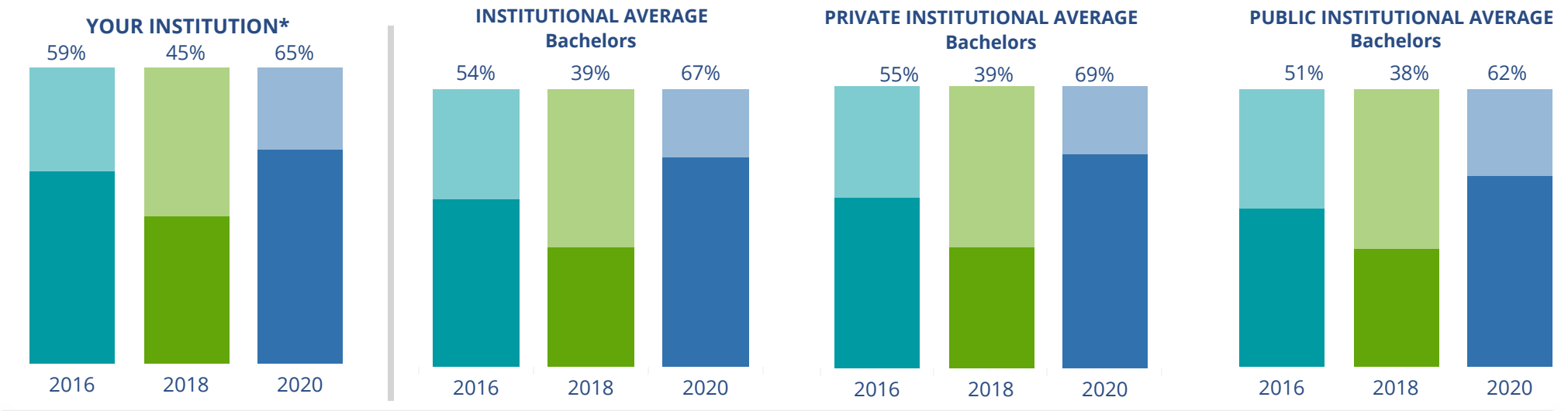
This page provides the numbers we used to calculate your voting, registration, and yield rates. The sub-categories under total student enrollment are the adjustments that we make to account for students who are ineligible to vote due to age or citizenship status. We also exclude, when correctly flagged, students who are not pursuing degrees.

We use IPEDS-derived estimates of NRAs when institutions do not submit non-resident alien status data to NSC, or we cannot verify the accuracy of the reported counts. This estimate is given by "IPEDS estimated non-resident aliens" on this page. If you believe the number of international students reported on this report is incorrect, you can manually adjust your institution's voting rates by using our recalculation tool. <https://id-he.tufts.edu/nsive/nsive-recalculation-tool>.

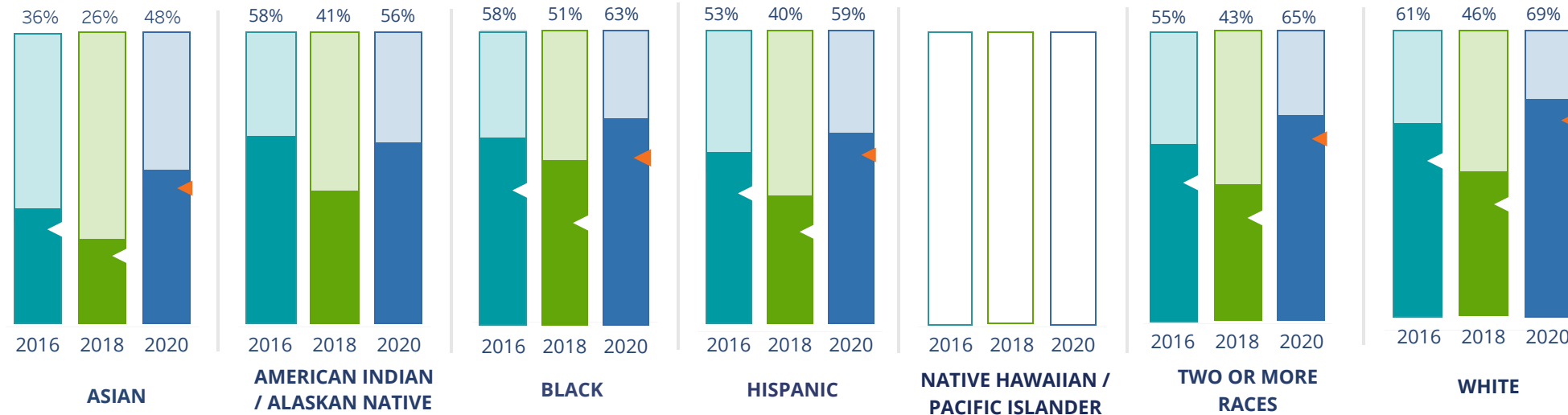
By Institution Types



These are estimated voting rates of your institution compared to the average voting rates of similar institutions in NSLVE. *"Your Institution" chart is presented at a different scale.



By Race / Ethnicity



These are estimated voting rates for race / ethnicity groups. These classifications are provided by campuses and are obtained following race reporting procedures* defined by the National Center for Education Statistics of the Institute of Education Sciences (IES). Please see our FAQ for more detail on why we cannot report national benchmark for some of the demographic groups:

<https://tufts.app.box.com/v/idhe-nsve-report-faq>

If you notice unavailable/missing data in this page, it could mean any of the following for your institution: (i) does not report this data; (ii) did not provide this data in past years; (iii) does not separately submit data for one or more of the demographic groups, or (iv) the data is reported for 10 or fewer students.

* <https://nces.ed.gov/ipeds/report-your-data/race-ethnicity-collecting-data-for-reporting-purposes>

Looking Closer

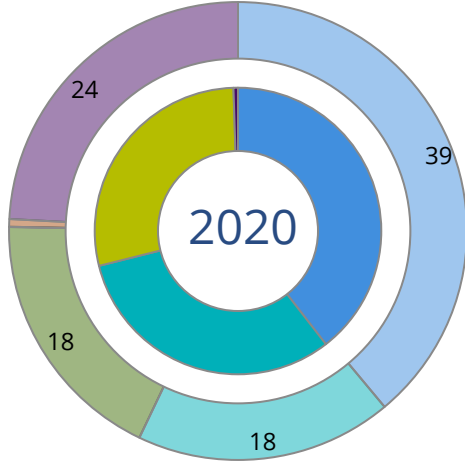
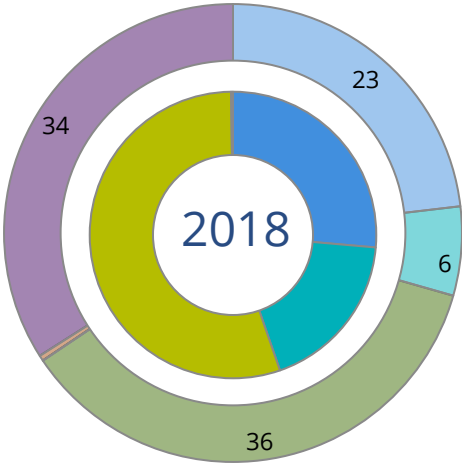
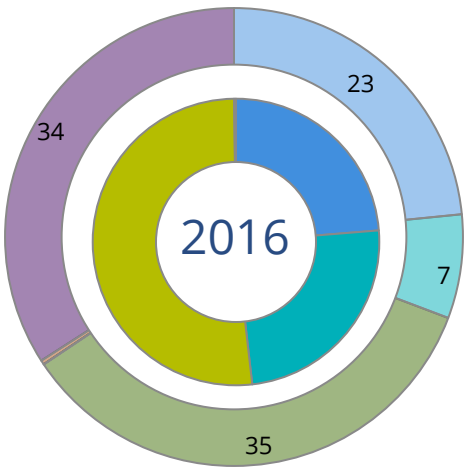
By Race/Ethnicity

This page provides the numbers we used to calculate race / ethnicity group voting rates. We include the counts of students and the change in rates between the two most recent comparable election years. If you notice unavailable/missing data in this page, it could mean any of the following for your institution: (i) does not report this data; (ii) did not provide this data in past years; (iii) does not separately submit data for one or more of the demographic groups, or (iv) the data is reported for 10 or fewer students.

	2016			2018			2020			2016-2020 Change (p.p)
	Enrolled	Voted	Rate	Enrolled	Voted	Rate	Enrolled	Voted	Rate	
Asian	979	351	36	993	261	26	895	426	48	↑ 12
American Indian/ Alaska Native	84	49	58	75	31	41	64	36	56	↓ -2
Black	3,490	2,013	58	3,322	1,681	51	2,771	1,756	63	↑ 6
Hispanic	3,533	1,868	53	3,845	1,523	40	3,600	2,128	59	↑ 6
Native Hawaiian/ Pacific Islander	-	-	-	-	-	-	-	-	-	-
2 or More Races	724	401	55	845	362	43	823	531	65	↑ 9
White	16,250	9,927	61	14,862	6,810	46	12,792	8,766	69	↑ 7
Race Unknown	723	389	54	577	277	48	500	294	59	↑ 5

By Voting Method

Not-In-Person Early Vote In-Person Other Provisional Unknown



	2016		2018		2020		2016-2020	
	Voted	Rate	Voted	Rate	Voted	Rate	Change (p.p.)	
Early Vote	3,678	25	2,001	18	4,406	32	7	↑
In-Person on Election Day	7,734	52	6,030	55	3,958	28	-23	↓
Not-In-Person	3,552	24	2,892	26	5,512	40	16	↑
Other	-	-	-	-	-	-	-	
Provisional	-	-	-	-	-	-	-	
Voting Method Unknown	30	0	22	0	60	1	0	↑

These are estimated rates for vote method utilization, the number of students utilizing each method, and the percent of students utilizing each method. Not all U.S. states provide information on vote method; voting method for voter files from these states are classified "Voting Method Unknown." For a list of these states, see our FAQ. <https://idhe.tufts.edu/nsive/nsive-faq#CampusReports>

By Age Group

	2016	2018	2020
18-21	56%	41%	63%
22-24	53%	41%	62%
25-29	54%	41%	61%
30-39	60%	47%	67%
40-49	69%	56%	74%
50+	73%	65%	80%

Voting is habit-forming and young voters will usually continue as voters in subsequent elections. Also, young voters are more likely to be contacted by campaigns and are visible, and therefore significant, to elected officials. While in the past, we have seen voting rates increase across age groups, in recent cycles, the most significant increases have been among first-time and the youngest voters. Some colleges serve primarily young students, traditionally viewed as students in the 18-21 or 22-24 categories here. Others have much higher numbers of enrolled older undergraduate or graduate students.

Looking Closer

By Age Group

Here, we provide the numbers of students in each age category and the voting rates for each group. These are based on the student’s age on the day of the election, as calculated by the National Student Clearinghouse using data from student enrollment records.

	2016			2018			2020			2016-2020	
	Enrolled	Voted	Rate	Enrolled	Voted	Rate	Enrolled	Voted	Rate	Change (p.p)	
18-21	8,525	4,802	56	8,472	3,486	41	7,534	4,752	63	↑	7
22-24	3,965	2,116	53	3,626	1,475	41	3,228	1,989	62	↑	8
25-29	4,788	2,572	54	4,542	1,861	41	3,805	2,318	61	↑	7
30-39	4,754	2,859	60	4,508	2,130	47	4,163	2,801	67	↑	7
40-49	2,380	1,644	69	2,148	1,193	56	1,746	1,298	74	↑	5
50+	1,371	1,005	73	1,223	800	65	969	779	80	↑	7

Looking Closer

By Sex

	2016			2018			2020			2016-2020	
	Enrolled	Voted	Rate	Enrolled	Voted	Rate	Enrolled	Voted	Rate	Change (p.p)	
Female	15,119	8,996	60	14,798	6,637	45	13,326	8,709	65	↑	6
Male	10,075	5,676	56	9,198	4,076	44	7,645	4,924	64	↑	8

These are estimated voting rates for sex groups and the numbers we used to calculate their voting rates. These classifications are provided by campuses and are obtained following the reporting procedures defined by the National Center for Education Statistics (NCES) of the Institute of Education Sciences (IES). Presently, NCES requires institutions to report students as “Male” or “Female” only.*

If you notice missing data in this page, it could mean any of the following for your institution: (i) does not report this data; (ii) did not provide this data in past years; (iii) does not separately submit data for one or more of the demographic groups, or (iv) the data is reported for 10 or fewer students.

*<https://surveys.nces.ed.gov/ipeds/public/survey-materials/faq?faqid=11>

Looking Closer

By Education Level / Undergraduate Class Year

	2016			2018			2020			2016-2020	
	Enrolled	Voted	Rate (%)	Enrolled	Voted	Rate (%)	Enrolled	Voted	Rate (%)	Change (p.p)	
EDUCATION LEVEL											
Undergraduate	23,339	13,505	58	23,067	10,198	44	19,924	12,821	64	↑	6
Graduate	-	-	-	-	-	-	-	-	-	-	-
Class Unknown	2,444	1,493	61	1,452	747	51	1,521	1,116	73	↑	12
CLASS YEAR											
First Year	-	-	-	-	-	-	-	-	-	-	-
Second Year	-	-	-	-	-	-	-	-	-	-	-
Upper Level	4,198	67	2,794	4,306	53	2,272	4,158	71	2,950	↑	4
ENROLLMENT STATUS											
Full-time	7,714	4,454	58	7,881	3,365	43	7,096	4,480	63	↑	5
Part-time	18,069	10,544	58	16,638	7,580	46	14,349	9,457	66	↑	8

These are estimated voting rates by Education Level (undergraduate/graduate), Class Year, and Enrollment Status (full-time/part-time), and the numbers we used to calculate these rates.

If you notice missing data in this page, it could mean any of the following for your institution: (i) does not report this data; (ii) did not provide this data in past years; (iii) does not separately submit data for one or more of the demographic groups, or (iv) the data is reported for 10 or fewer students.

By Field of Study

FIELDS	2016			2018			2020			2016-2020
	Enrolled	Voted	Rate	Enrolled	Voted	Rate	Enrolled	Voted	Rate	Change (p.p)
Architecture	61	31	51	92	30	33	84	52	62	↑ 11
Biological and Biomedical Sciences	148	99	67	154	84	55	126	83	66	↓ -1
Business, Management, and Marketing	2,202	1,333	61	2,213	1,024	46	2,002	1,362	68	↑ 7
Computer and Information Sciences	1,675	937	56	1,703	773	45	1,703	1,106	65	↑ 9
Education	790	533	67	765	422	55	732	531	73	↑ 5
Engineering and Engineering Technologies	233	136	58	228	95	42	144	89	62	↑ 3
Family and Consumer/Human Sciences	–	–	–	–	–	–	–	–	–	–

These are estimated voting rates by field of study, and the numbers we used to calculate the field of study rates. For an explanation of CIP codes, please see our FAQ.* There are roughly 8,000 fields of study among U.S. colleges and universities, so we provide rates for condensed categories.

*<https://tufts.app.box.com/v/idhe-nslve-report-faq>

By Field of Study

FIELDS	2016			2018			2020			2016-2020 Change (p.p)
	Enrolled	Voted	Rate	Enrolled	Voted	Rate	Enrolled	Voted	Rate	
Health Professions	5,407	3,119	58	5,119	2,145	42	4,242	2,728	64	↑ 7
Law Enforcement, Firefighting, and Protec..	865	548	63	802	392	49	685	457	67	↑ 3
Legal Professions and Studies	298	174	58	229	120	52	188	134	71	↑ 13
Liberal Arts and Sciences, and Humanities	11,632	6,466	56	10,611	4,498	42	8,980	5,582	62	↑ 7
Natural Resources and Conservation	286	185	65	272	159	58	199	146	73	↑ 9
Personal and Culinary Services	68	48	71	274	142	52	344	240	70	↓ -1
Public Administration and Social Service P..	219	129	59	389	203	52	300	182	61	↑ 2
Science Technologies/Technicians	41	26	63	79	40	51	58	36	62	↓ -1
Visual and Performing Arts	273	147	54	174	86	49	124	83	67	↑ 13
Unknown	1,565	1,077	69	1,412	731	52	1,532	1,125	73	↑ 5

About This Report

Thank you for participating in the National Study of Learning, Voting, and Engagement.

Since NSLVE's launch in 2013, nearly 1,200 colleges and universities have signed up to receive their voting rates for the 2012, 2014, 2016, 2018, and 2020 federal elections.

Along with others, your institution's participation in this study has allowed us to build a robust database of over 50 million college student records, about 10 million for each election year, that serve as a foundation for innovative research on college student political learning and engagement in democracy.

NSLVE is a signature initiative of the Institute for Democracy and Higher Education (IDHE) at Tufts University's Jonathan M. Tisch College of Civic Life. The mission of IDHE is to shift college and university priorities and culture to advance political learning, agency, and equity. We achieve our mission through research, resource development, technical assistance, and advocacy.

About the Data

The voter registration and voting rates in this report reflect the percentage of your institution's students who were eligible to vote and who actually voted in the 2016, 2018, and 2020 elections.

These results are based on enrollment records your institution submitted to the National Student Clearinghouse (NSC) and publicly available voting files collected by L2 Political.

Enrollment lists are adjusted by deducting students under age 18 (at the time of the election), people identified as non-degree seeking and those identified by campuses as "nonresident aliens" (NRAs) (the federal government's category for mostly international students). Unfortunately, not all campuses report NRAs to NSC. For those campuses, we use IPEDS to calculate the number of NRA students on each campus and adjust NSC enrollment numbers to estimate the number of students to remove. We also quality check NRA removals by verifying that there is little to no discrepancy between the number of international students reported by the campus to IPEDS and to NSC. We cannot adjust subgroup analyses absent identification of NRAs verified by the process above. We welcome closer partnerships with individual colleges and universities to provide more accurate rates. For more on the data and the matching process, see our FAQ on Campus Reports.

St Petersburg College

Thank you for the work you do to improve your students' political learning and engagement. We hope that you find your NSLVE report useful. For up-to-date news on NSLVE data, resources, and to sign up for our newsletter visit: <https://idhe.tufts.edu>.

References: IDHE encourages report recipients to share this report as broadly as possible, including posting it on the college or university's website. When doing so, please use the following citation: Institute for Democracy & Higher Education: National Study of Learning, Voting and Engagement. (2021). 2016, 2018, and 2020 report for _____ [name of institution]. Medford, MA.



Barnum Hall
163 Packard Ave.
Medford, MA 02155

tischcollege@tufts.edu
617.627.3453



Institute for Democracy & Higher Education:
National Study of Learning, Voting, and Engagement
Barnum Hall, Medford, MA 02155

Follow Us on Twitter: @TuftsIDHE
NSLVE@tufts.edu
617.627.0620