



October 2021

# **Student Voting Rates for Santa Clara University**

## 2020 NSLVE Campus Report

October 2021

Dear Colleagues:

We are pleased to send this tailored report containing your students' voting rates for 2020. This report contains three years of relevant topline data: 2016, 2018, and 2020. As always, we disaggregate the data so you can better identify and address gaps in participation.

College and university students participated in record-breaking numbers in the 2020 election. In 2016, the Average Institutional Voting Rate was 53%. This year, it jumped to 66%. We encourage you to review Democracy Counts 2020, our most recent national report.

As in past years, we urge you to share this report widely and strategically, particularly with faculty who, in 2020, were often the most consistent communicators with students about ever-changing voting conditions and deadlines. We also urge you to review our recommendations for engaging elections to cultivate a robust and healthy campus climate for political engagement, discourse, equity, and participation: Election Imperatives (2019) and the more recent Election Imperatives: A Time of Physical Distancing and Social Action. Since "pervasive political discussions" and attentiveness to the campus culture around speech and academic freedom are among our top recommendations, we direct you to our discussion guides on talking about your NSLVE report, on free speech and inclusion, and on hot topics, our Making Sense of ... guides.

Finally, we always encourage you to work with us. Help us help you get better data by reaching out. Email [IDHE@Tufts.edu](mailto:IDHE@Tufts.edu) for more information. And as always, watch your inbox for our periodic newsletter, IDHE Update, for announcements about upcoming releases and new resources.

Congratulations on engaging your students in the 2020 election. Remember, student political learning is a year-round objective. Elections may be episodic, but student political engagement should not be.

All the Best,  
IDHE Team



(Top Row from left) Duy Trinh, Program Administrator; Adam Gismondi, Director of Impact; Dave Brinker, Senior Researcher;  
(Bottom Row from left) Nancy Thomas, Director; Norma López, Postdoctoral Scholar; Prabhat Gautam, Data Manager.

We also want to acknowledge and thank **Syed Golam Mohaimen, M.S. student in Data Science at Tufts University** for his contributions toward the creation of these reports.

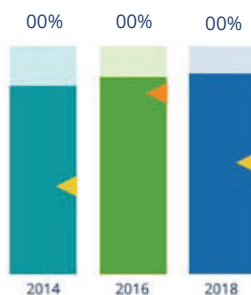
## In This Report

This report presents data on student voter participation rates for your campus. The topline counts on page 5 tells you how many students voted, but we encourage you to look carefully at the data on subsequent pages to learn who voted. Data are presented in the form of vessel charts, overlapping donut charts, and tables.

### Tables

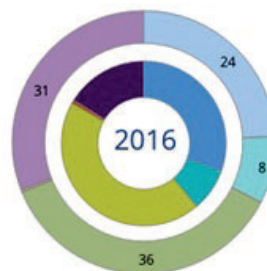
The tables show, on the left-side columns, the numbers of students and the rates from 2016, 2018, and 2020. On the left-side, percentage point (p.p.) changes between 2016 and 2020. A red down arrow indicates a decrease, a green up arrow indicates an increase, and a yellow arrow pointing to the right indicates no change. "-" in these tables indicates that the data is unavailable/missing, or is available for 10 or less students.

	2014			2018			2014-2018 Change (p.p.)
	Enrolled	Voted	Rate (%)	Enrolled	Voted	Rate (%)	
Asian	-	-	-	-	-	-	-
American Indian/ Alaska Native	-	-	-	-	-	-	-
Black	-	-	-	-	-	-	-
Hispanic	-	-	-	-	-	-	-



### Vessel Chart

This chart shows rates out of 100%, with arrows to the right of each bar representing relevant national averages (medians), which you can find in IDHE's national report Democracy Counts 2020.



### Overlapping Donut Chart

This chart is used to show the breakdown of vote method utilization (page 10), with the outer ring showing your campus method utilization and the inner ring showing the national breakdown. These are described in percentages.

## Voting, Registration and Yield Rates

### YOUR INSTITUTION

78.6%

2020 Voting Rate

+19.4

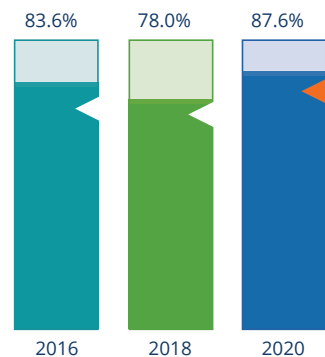
Change From 2016

### ALL INSTITUTIONS

66%

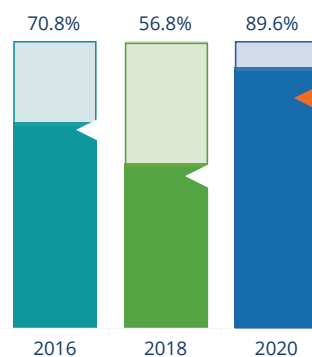
2020 Voting Rate

### REGISTRATION RATE



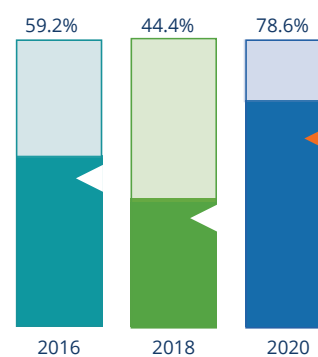
The **Registration Rate** is the percent of your voting-eligible students who registered to vote.

### VOTING RATE OF REGISTERED STUDENTS



The **Voting Rate of Registered Students** is the percent of registered students who voted on Election Day. We often refer to this as the "yield" rate.

### VOTING RATE



The **Voting Rate** is the percentage of eligible students who voted on Election Day. The voting rate is also the product of the registration and yield rates.

# Looking Closer

## Voting and Registration Rates

	2016	2018	2020	2016-2020 Change (p.p.)
Total Student Enrollment	7,414	8,247	8,489	↑ 1,075
(Age under 18/Unknown)	–	–	–	–
(NSC reported non-resident aliens)	976	1,102	961	↓ -15
(FERPA records blocked)	–	–	15	–
(Non-Degree Seeking Students)	85	79	58	↓ -27
Total eligible voters	6,349	7,057	7,454	↑ 1,105
Number of students who registered	5,310	5,507	6,533	↑ 1,223
Number of students who voted	3,758	3,130	5,856	↑ 2,098
Registration Rate %	84	78	88	↑ 4
Voting Rate of Registered Students %	71	57	90	↑ 19
Voting Rate %	59	44	79	↑ 19

**This page provides the numbers we used to calculate your voting, registration, and yield rates.** The sub-categories under total student enrollment are the adjustments that we make to account for students who are ineligible to vote due to age or citizenship status. We also exclude, when correctly flagged, students who are not pursuing degrees.

We have removed non-resident aliens (international students) based on your institution's enrollment submission to the National Student Clearinghouse. This is indicated by "NSC reported non-resident aliens" on this page.

## By Institution Types

2016 Voting Rate for  
All Institutions

**53%**

HIGH  
82%

LOW  
13%

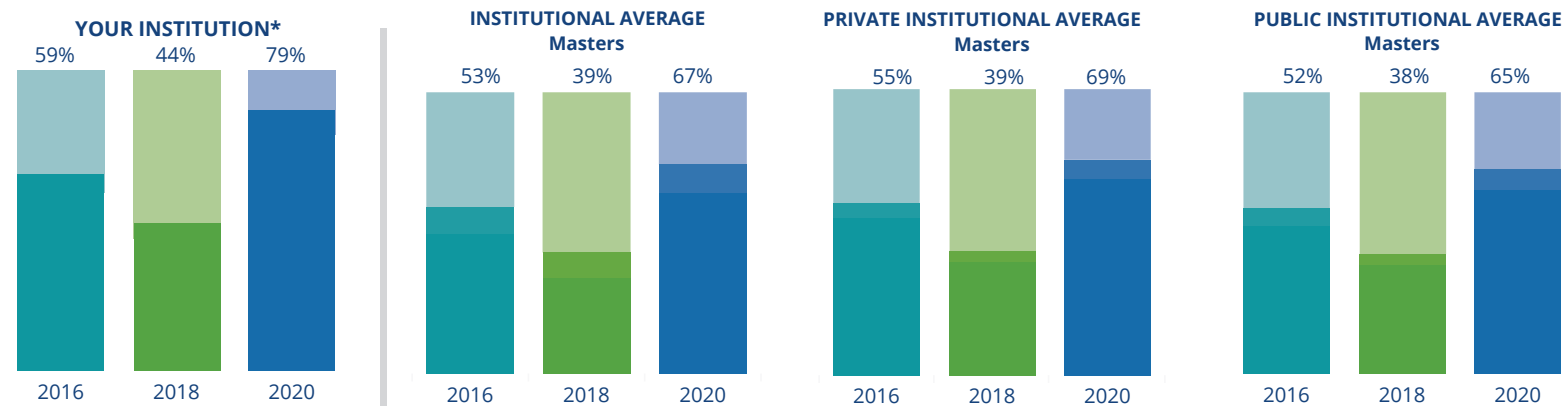
2020 Voting Rate for  
All Institutions

**66%**

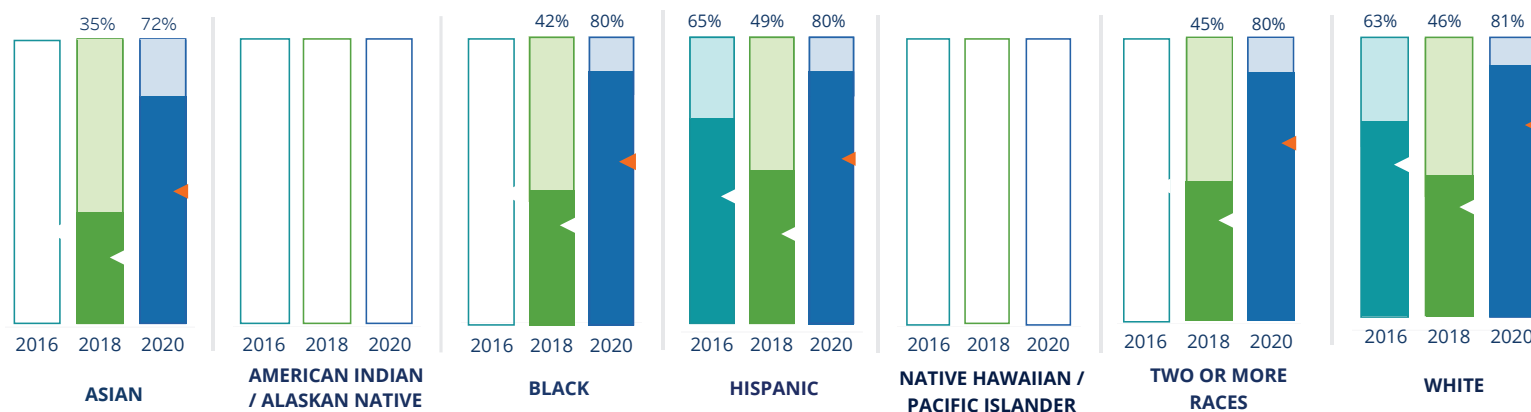
HIGH  
89%

LOW  
19%

These are estimated voting rates of your institution compared to the average voting rates of similar institutions in NSLVE. \*"Your Institution" chart is presented at a different scale.



## By Race / Ethnicity



**These are estimated voting rates for race / ethnicity groups.** These classifications are provided by campuses and are obtained following race reporting procedures\* defined by the National Center for Education Statistics of the Institute of Education Sciences (IES). Please see our FAQ for more detail on why we cannot report national benchmark for some of the demographic groups:

<https://tufts.app.box.com/v/idhe-nsive-report-faq>

If you notice unavailable/missing data in this page, it could mean any of the following for your institution: (i) does not report this data; (ii) did not provide this data in past years; (iii) does not separately submit data for one or more of the demographic groups, or (iv) the data is reported for 10 or fewer students.

\* <https://nces.ed.gov/ipeds/report-your-data/race-ethnicity-collecting-data-for-reporting-purposes>

# Looking Closer

## By Race/Ethnicity

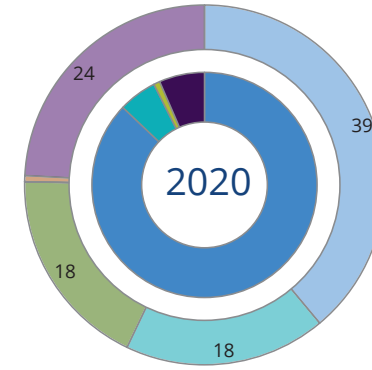
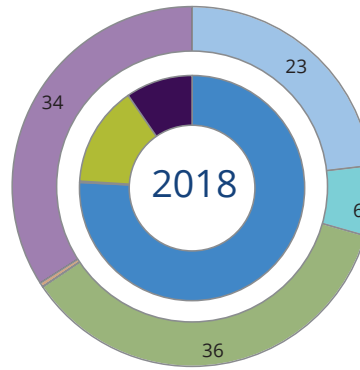
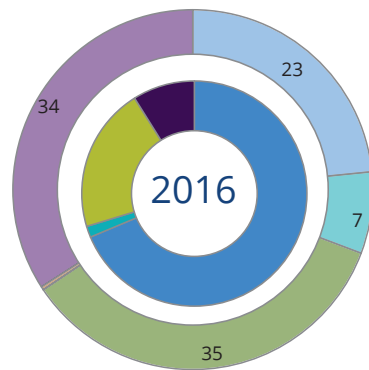
This page provides the numbers we used to calculate race / ethnicity group voting rates. We include the counts of students and the change in rates between the two most recent comparable election years. If you notice unavailable/missing data in this page, it could mean any of the following for your institution: (i) does not report this data; (ii) did not provide this data in past years; (iii) does not separately submit data for one or more of the demographic groups, or (iv) the data is reported for 10 or fewer students.

	2016			2018			2020			2016-2020 Change (p.p)
	Enrolled	Voted	Rate	Enrolled	Voted	Rate	Enrolled	Voted	Rate	
<b>Asian</b>	26	–	–	1,403	493	35	1,653	1,188	72	–
<b>American Indian/ Alaska Native</b>	–	–	–	–	–	–	–	–	–	–
<b>Black</b>	16	–	–	225	95	42	208	166	80	–
<b>Hispanic</b>	20	13	65	1,351	655	48	1,463	1,169	80	↑ 15
<b>Native Hawaiian/ Pacific Islander</b>	–	–	–	14	–	–	18	–	–	–
<b>2 or More Races</b>	–	–	–	540	242	45	605	484	80	–
<b>White</b>	51	32	63	3,345	1,528	46	3,321	2,699	81	↑ 19
<b>Race Unknown</b>	7,197	3,708	52	1,256	113	9	186	140	75	↑ 24



## By Voting Method

Not-In-Person Early Vote In-Person Other Provisional Unknown



	2016		2018		2020		2016-2020	
	Voted	Rate	Voted	Rate	Voted	Rate	Change (p.p.)	
Early Vote	60	2	–	–	325	6	4	↑
In-Person on Election Day	783	21	452	14	54	1	-20	↓
Not-In-Person	2,581	69	2,373	76	5,100	87	18	↑
Other	–	–	–	–	–	–	–	
Provisional	–	–	–	–	–	–	–	
Voting Method Unknown	334	9	297	10	376	7	-2	↓

These are estimated rates for vote method utilization, the number of students utilizing each method, and the percent of students utilizing each method. Not all U.S. states provide information on vote method; voting method for voter files from these states are classified "Voting Method Unknown." For a list of these states, see our FAQ. <https://idhe.tufts.edu/nsive/nsive-faq#CampusReports>

## By Age Group

	2016	2018	2020
18-21	51%	37%	80%
22-24	51%	38%	79%
25-29	50%	38%	78%
30-39	48%	37%	68%
40-49	64%	48%	80%
50+	78%	73%	83%

### **Voting is habit-forming and young voters will usually continue as voters in subsequent elections.**

Also, young voters are more likely to be contacted by campaigns and are visible, and therefore significant, to elected officials. While in the past, we have seen voting rates increase across age groups, in recent cycles, the most significant increases have been among first-time and the youngest voters. Some colleges serve primarily young students, traditionally viewed as students in the 18-21 or 22-24 categories here. Others have much higher numbers of enrolled older undergraduate or graduate students.

# Looking Closer

## By Age Group

Here, we provide the numbers of students in each age category and the voting rates for each group. These are based on the student's age on the day of the election, as calculated by the National Student Clearinghouse using data from student enrollment records.

	2016			2018			2020			2016-2020
	Enrolled	Voted	Rate	Enrolled	Voted	Rate	Enrolled	Voted	Rate	Change (p.p)
<b>18-21</b>	4,462	2,281	51	4,828	1,809	37	4,781	3,802	80	↑ 28
<b>22-24</b>	1,082	552	51	1,193	459	38	1,004	796	79	↑ 28
<b>25-29</b>	931	464	50	1,137	434	38	795	618	78	↑ 28
<b>30-39</b>	548	264	48	672	249	37	502	339	68	↑ 19
<b>40-49</b>	197	127	64	196	94	48	237	189	80	↑ 15
<b>50+</b>	90	70	78	116	85	73	135	112	83	↑ 5

# Looking Closer

## By Sex

	2016			2018			2020			2016-2020	
	Enrolled	Voted	Rate	Enrolled	Voted	Rate	Enrolled	Voted	Rate	Change (p.p)	
Female	36	23	64	4,122	1,740	42	3,758	3,082	82	↑	18
Male	90	33	37	4,020	1,390	35	3,693	2,773	75	↑	38

**These are estimated voting rates for sex groups and the numbers we used to calculate their voting rates.** These classifications are provided by campuses and are obtained following the reporting procedures defined by the National Center for Education Statistics (NCES) of the Institute of Education Sciences (IES). Presently, NCES requires institutions to report students as “Male” or “Female” only.\*

If you notice missing data in this page, it could mean any of the following for your institution: (i) does not report this data; (ii) did not provide this data in past years; (iii) does not separately submit data for one or more of the demographic groups, or (iv) the data is reported for 10 or fewer students.

\*<https://surveys.nces.ed.gov/ipeds/public/survey-materials/faq?faqid=11>

# Looking Closer

## By Education Level / Undergraduate Class Year

	2016			2018			2020			2016-2020	
	Enrolled	Voted	Rate (%)	Enrolled	Voted	Rate (%)	Enrolled	Voted	Rate (%)	Change (p.p)	
<b>EDUCATION LEVEL</b>											
<b>Undergraduate</b>	4,864	2,480	51	5,206	1,964	38	5,207	4,125	79	↑ 28	
<b>Graduate</b>	2,392	1,243	52	2,878	1,147	40	2,217	1,706	77	↑ 25	
<b>Class Unknown</b>	54	35	65	58	19	33	30	25	83	↑ 19	
<b>CLASS YEAR</b>											
<b>First Year</b>	1,007	49	494	1,213	32	391	1,151	80	916	↑ 31	
<b>Second Year</b>	1,168	52	606	1,381	37	512	1,330	79	1,047	↑ 27	
<b>Upper Level</b>	2,690	51	1,380	2,610	41	1,061	2,709	79	2,150	↑ 28	
<b>ENROLLMENT STATUS</b>											
<b>Full-time</b>	6,248	3,181	51	7,124	2,646	37	6,533	5,150	79	↑ 28	
<b>Part-time</b>	1,062	577	54	1,018	484	48	921	706	77	↑ 22	

These are estimated voting rates by Education Level (undergraduate/graduate), Class Year, and Enrollment Status (full-time/part-time), and the numbers we used to calculate these rates.

If you notice missing data in this page, it could mean any of the following for your institution: (i) does not report this data; (ii) did not provide this data in past years; (iii) does not separately submit data for one or more of the demographic groups, or (iv) the data is reported for 10 or fewer students.

## By Field of Study

FIELDS	2016			2018			2020			2016-2020
	Enrolled	Voted	Rate	Enrolled	Voted	Rate	Enrolled	Voted	Rate	Change (p.p)
Area, Ethnic, Cultural, and Gender Studies	13	–	–	25	15	60	28	25	89	–
Biological and Biomedical Sciences	396	216	55	412	166	40	425	343	81	↑ 26
Business, Management, and Marketing	1,663	802	48	2,127	724	34	2,127	1,641	77	↑ 29
Communication and Journalism	349	179	51	318	115	36	361	272	75	↑ 24
Computer and Information Sciences	133	18	14	143	14	10	42	33	79	↑ 65
Education	196	142	72	239	135	56	217	172	79	↑ 7
Engineering and Engineering Technologies	1,457	635	44	1,646	502	30	1,084	831	77	↑ 33

**These are estimated voting rates by field of study, and the numbers we used to calculate the field of study rates.** For an explanation of CIP codes, please see our FAQ.\* There are roughly 8,000 fields of study among U.S. colleges and universities, so we provide rates for condensed categories.

\*<https://tufts.app.box.com/v/idhe-nsive-report-faq>

## By Field of Study

FIELDS	2016			2018			2020			2016-2020 Change (p.p)
	Enrolled	Voted	Rate	Enrolled	Voted	Rate	Enrolled	Voted	Rate	
English Language and Literature	87	55	63	84	35	42	67	60	90	↑ 26
Family and Consumer/Human Sciences	–	–	–	36	21	58	43	38	88	–
Foreign Languages, Literatures, and Lingui..	19	–	–	22	–	–	17	12	71	–
Health Professions	127	65	51	110	49	45	102	88	86	↑ 35
History	33	21	64	31	14	45	37	33	89	↑ 26
Legal Professions and Studies	632	409	65	696	360	52	692	540	78	↑ 13
Liberal Arts and Sciences, and Humanities	244	104	43	262	77	29	202	159	79	↑ 36
Mathematics and Statistics	63	40	63	82	37	45	68	50	74	↑ 10
Multi/Interdisciplinary Studies	162	78	48	263	100	38	268	205	76	↑ 28
Natural Resources and Conservation	130	70	54	115	55	48	133	114	86	↑ 32
Philosophy and Religious Studies	99	64	65	92	56	61	108	93	86	↑ 21
Physical Sciences	69	41	59	56	26	46	42	35	83	↑ 24
Psychology	645	392	61	609	307	50	701	562	80	↑ 19
Social Sciences	552	288	52	567	242	43	516	417	81	↑ 29

## By Field of Study

FIELDS	2016			2018			2020			2016-2020	
	Enrolled	Voted	Rate	Enrolled	Voted	Rate	Enrolled	Voted	Rate	Change (p.p)	
Visual and Performing Arts	68	34	50	68	36	53	63	51	81	↑	31
Unknown	56	35	63	65	25	38	50	41	82	↑	20



## About This Report

### Thank you for participating in the National Study of Learning, Voting, and Engagement.

Since NSLVE's launch in 2013, nearly 1,200 colleges and universities have signed up to receive their voting rates for the 2012, 2014, 2016, 2018, and 2020 federal elections.

Along with others, your institution's participation in this study has allowed us to build a robust database of over 50 million college student records, about 10 million for each election year, that serve as a foundation for innovative research on college student political learning and engagement in democracy.

NSLVE is a signature initiative of the Institute for Democracy and Higher Education (IDHE) at Tufts University's Jonathan M. Tisch College of Civic Life. The mission of IDHE is to shift college and university priorities and culture to advance political learning, agency, and equity. We achieve our mission through research, resource development, technical assistance, and advocacy.

#### About the Data

The voter registration and voting rates in this report reflect the percentage of your institution's students who were eligible to vote and who actually voted in the 2016, 2018, and 2020 elections.

These results are based on enrollment records your institution submitted to the National Student Clearinghouse (NSC) and publicly available voting files collected by L2 Political.

Enrollment lists are adjusted by deducting students under age 18 (at the time of the election), people identified as non-degree seeking and those identified by campuses as "nonresident aliens" (NRAs) (the federal government's category for mostly international students). Unfortunately, not all campuses report NRAs to NSC. For those campuses, we use IPEDS to calculate the number of NRA students on each campus and adjust NSC enrollment numbers to estimate the number of students to remove. We also quality check NRA removals by verifying that there is little to no discrepancy between the number of international students reported by the campus to IPEDS and to NSC. We cannot adjust subgroup analyses absent identification of NRAs verified by the process above. We welcome closer partnerships with individual colleges and universities to provide more accurate rates. For more on the data and the matching process, see our FAQ on Campus Reports.

Santa Clara University

Thank you for the work you do to improve your students' political learning and engagement. We hope that you find your NSLVE report useful. For up-to-date news on NSLVE data, resources, and to sign up for our newsletter visit: <https://idhe.tufts.edu>.

References: IDHE encourages report recipients to share this report as broadly as possible, including posting it on the college or university's website. When doing so, please use the following citation: Institute for Democracy & Higher Education: National Study of Learning, Voting and Engagement. (2021). 2016, 2018, and 2020 report for \_\_\_\_\_ [name of institution]. Medford, MA.



Jonathan M. Tisch  
College of Civic Life

Barnum Hall  
163 Packard Ave.  
Medford, MA 02155

tischcollege@tufts.edu  
617.627.3453



INSTITUTE FOR  
DEMOCRACY &  
HIGHER EDUCATION

Institute for Democracy & Higher Education:  
National Study of Learning, Voting, and Engagement  
Barnum Hall, Medford, MA 02155

Follow Us on Twitter: @TuftsIDHE  
NSLVE@tufts.edu  
617.627.0620