



October 2021

Student Voting Rates for Sam Houston State University

2020 NSLVE Campus Report



Jonathan M. Tisch
College of Civic Life



INSTITUTE FOR DEMOCRACY
& HIGHER EDUCATION

October 2021

Dear Colleagues:

We are pleased to send this tailored report containing your students' voting rates for 2020. This report contains three years of relevant topline data: 2016, 2018, and 2020. As always, we disaggregate the data so you can better identify and address gaps in participation.

College and university students participated in record-breaking numbers in the 2020 election. In 2016, the Average Institutional Voting Rate was 53%. This year, it jumped to 66%. We encourage you to review Democracy Counts 2020, our most recent national report.

As in past years, we urge you to share this report widely and strategically, particularly with faculty who, in 2020, were often the most consistent communicators with students about ever-changing voting conditions and deadlines. We also urge you to review our recommendations for engaging elections to cultivate a robust and healthy campus climate for political engagement, discourse, equity, and participation: Election Imperatives (2019) and the more recent Election Imperatives: A Time of Physical Distancing and Social Action. Since "pervasive political discussions" and attentiveness to the campus culture around speech and academic freedom are among our top recommendations, we direct you to our discussion guides on talking about your NSLVE report, on free speech and inclusion, and on hot topics, our Making Sense of ... guides.

Finally, we always encourage you to work with us. Help us help you get better data by reaching out. Email IDHE@Tufts.edu for more information. And as always, watch your inbox for our periodic newsletter, IDHE Update, for announcements about upcoming releases and new resources.

Congratulations on engaging your students in the 2020 election. Remember, student political learning is a year-round objective. Elections may be episodic, but student political engagement should not be.

All the Best,
IDHE Team

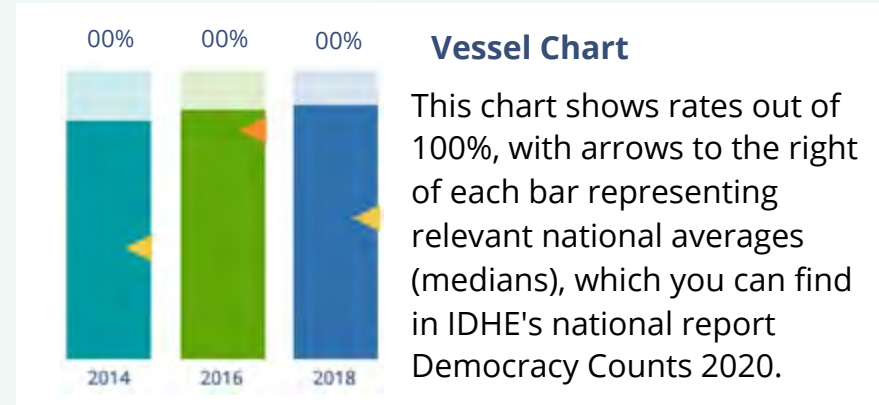


(Top Row from left) Duy Trinh, Program Administrator; Adam Gismondi, Director of Impact; Dave Brinker, Senior Researcher;
(Bottom Row from left) Nancy Thomas, Director; Norma López, Postdoctoral Scholar; Prabhat Gautam, Data Manager.

We also want to acknowledge and thank **Syed Golam Mohaimen, M.S. student in Data Science at Tufts University** for his contributions toward the creation of these reports.

In This Report

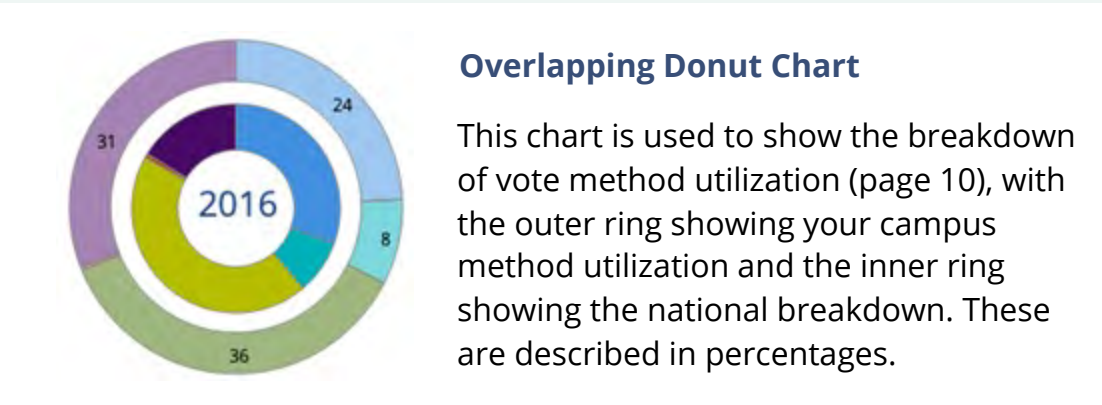
This report presents data on student voter participation rates for your campus. The topline counts on page 5 tells you how many students voted, but we encourage you to look carefully at the data on subsequent pages to learn who voted. Data are presented in the form of vessel charts, overlapping donut charts, and tables.



	2014			2018			2014-2018 Change (p.p.)
	Enrolled	Voted	Rate (%)	Enrolled	Voted	Rate (%)	
Asian	-	-	-	-	-	-	-
American Indian/ Alaska Native	-	-	-	-	-	-	-
Black	-	-	-	-	-	-	-
Hispanic	-	-	-	-	-	-	-

Tables

The tables show, on the left-side columns, the numbers of students and the rates from 2016, 2018, and 2020. On the left-side, percentage point (p.p.) changes between 2016 and 2020. A red down arrow indicates a decrease, a green up arrow indicates an increase, and a yellow arrow pointing to the right indicates no change. "-" in these tables indicates that the data is unavailable/missing, or is available for 10 or less students.



Voting, Registration and Yield Rates

YOUR INSTITUTION

59.5%

2020 Voting Rate

+17.3

Change From 2016

ALL INSTITUTIONS

66%

2020 Voting Rate

REGISTRATION RATE

Year	Registration Rate
2016	77.3%
2018	79.5%
2020	83.3%

The **Registration Rate** is the percent of your voting-eligible students who registered to vote.

VOTING RATE OF REGISTERED STUDENTS

Year	Voting Rate of Registered Students
2016	54.6%
2018	44.5%
2020	71.4%

The **Voting Rate of Registered Students** is the percent of registered students who voted on Election Day. We often refer to this as the “yield” rate.

VOTING RATE

Year	Voting Rate
2016	42.2%
2018	35.4%
2020	59.5%

The **Voting Rate** is the percentage of eligible students who voted on Election Day. The voting rate is also the product of the registration and yield rates.

Looking Closer

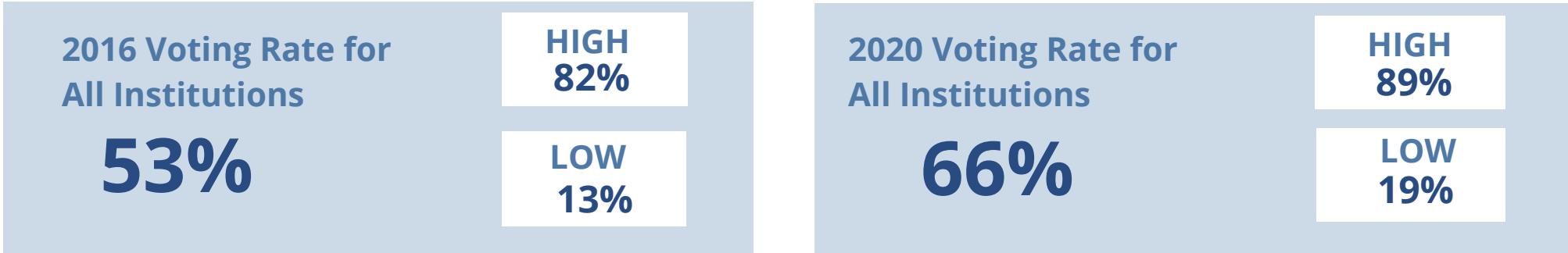
Voting and Registration Rates

	2016	2018	2020	2016-2020 Change (p.p.)
Total Student Enrollment	20,267	20,765	21,386	↑ 1,118
(Age under 18/Unknown)	-	-	-	-
(IPEDS estimated non-resident aliens)	315	282	250	↓ -65
(FERPA records blocked)	130	457	521	↑ 391
(Non-Degree Seeking Students)	-	-	78	-
Total eligible voters	19,822	20,027	20,534	↑ 712
Number of students who registered	15,318	15,917	17,114	↑ 1,796
Number of students who voted	8,367	7,085	12,227	↑ 3,860
Registration Rate %	77	79	83	↑ 6
Voting Rate of Registered Students %	55	45	71	↑ 17
Voting Rate %	42	35	60	↑ 17

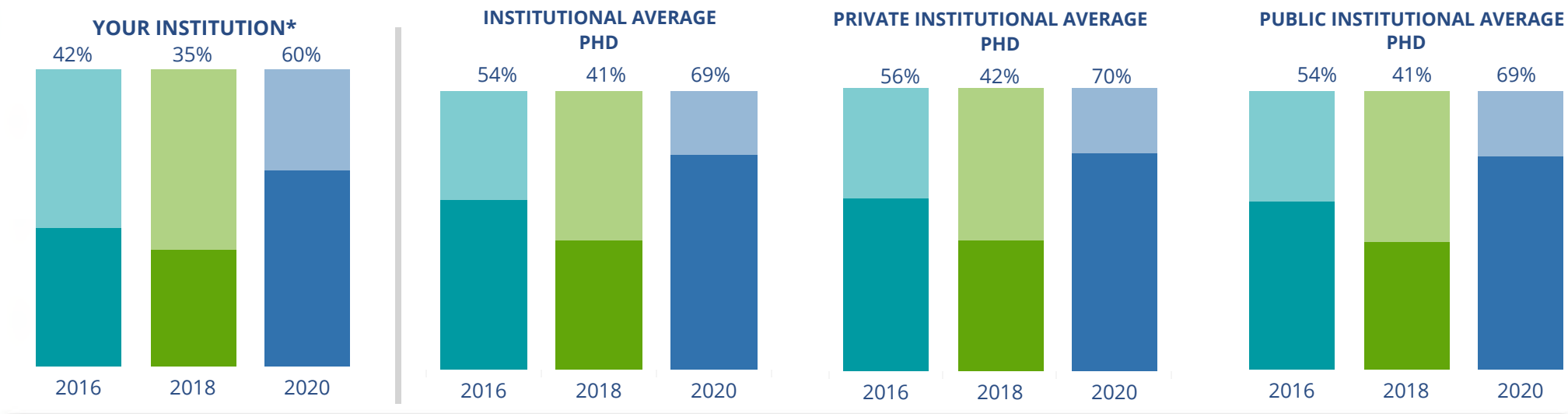
This page provides the numbers we used to calculate your voting, registration, and yield rates. The sub-categories under total student enrollment are the adjustments that we make to account for students who are ineligible to vote due to age or citizenship status. We also exclude, when correctly flagged, students who are not pursuing degrees.

We use IPEDS-derived estimates of NRAs when institutions do not submit non-resident alien status data to NSC, or we cannot verify the accuracy of the reported counts. This estimate is given by "IPEDS estimated non-resident aliens" on this page. If you believe the number of international students reported on this report is incorrect, you can manually adjust your institution's voting rates by using our recalculation tool. <https://id-he.tufts.edu/nsive/nsive-recalculation-tool>.

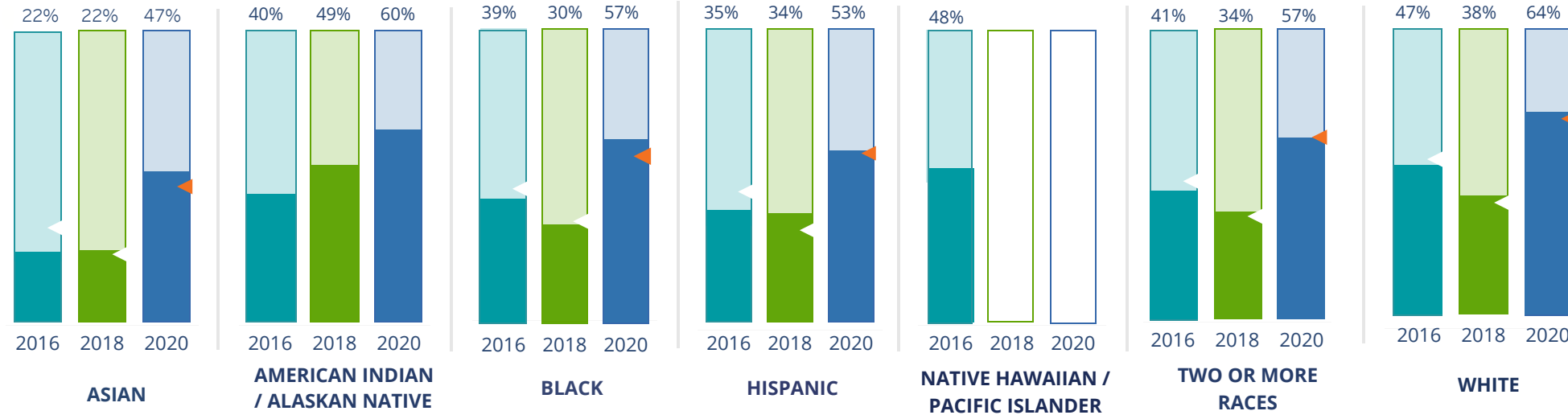
By Institution Types



These are estimated voting rates of your institution compared to the average voting rates of similar institutions in NSLVE. *"Your Institution" chart is presented at a different scale.



By Race / Ethnicity



These are estimated voting rates for race / ethnicity groups. These classifications are provided by campuses and are obtained following race reporting procedures* defined by the National Center for Education Statistics of the Institute of Education Sciences (IES). Please see our FAQ for more detail on why we cannot report national benchmark for some of the demographic groups:

<https://tufts.app.box.com/v/idhe-nsve-report-faq>

If you notice unavailable/missing data in this page, it could mean any of the following for your institution: (i) does not report this data; (ii) did not provide this data in past years; (iii) does not separately submit data for one or more of the demographic groups, or (iv) the data is reported for 10 or fewer students.

* <https://nces.ed.gov/ipeds/report-your-data/race-ethnicity-collecting-data-for-reporting-purposes>

Looking Closer

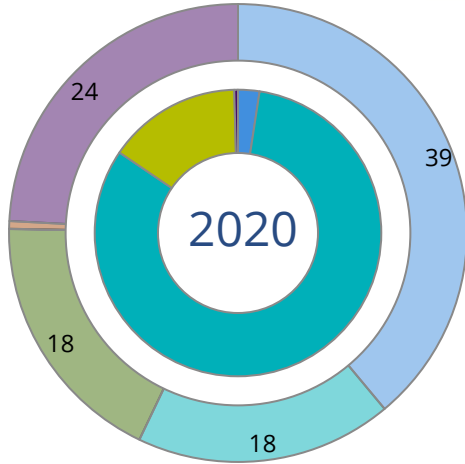
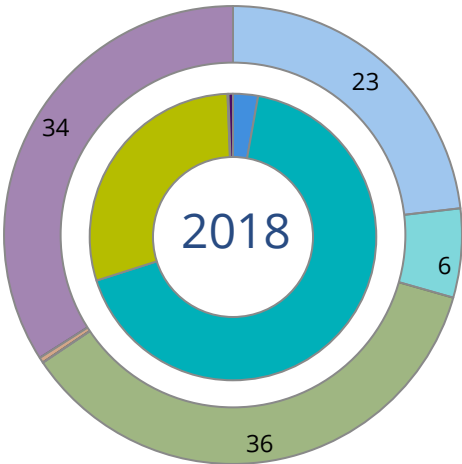
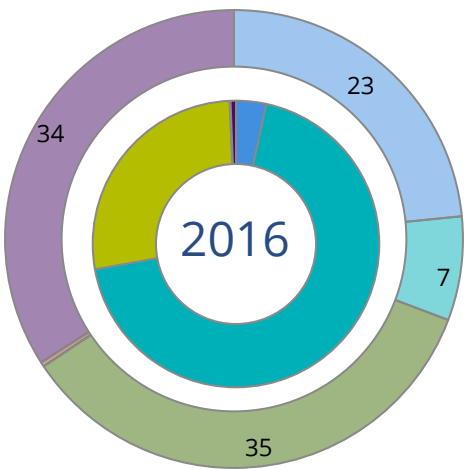
By Race/Ethnicity

This page provides the numbers we used to calculate race / ethnicity group voting rates. We include the counts of students and the change in rates between the two most recent comparable election years. If you notice unavailable/missing data in this page, it could mean any of the following for your institution: (i) does not report this data; (ii) did not provide this data in past years; (iii) does not separately submit data for one or more of the demographic groups, or (iv) the data is reported for 10 or fewer students.

	2016			2018			2020			2016-2020 Change (p.p)
	Enrolled	Voted	Rate	Enrolled	Voted	Rate	Enrolled	Voted	Rate	
Asian	428	93	22	467	104	22	531	249	47	↑ 25
American Indian/ Alaska Native	96	38	40	105	51	49	124	74	60	↑ 20
Black	3,526	1,359	39	3,458	1,049	30	3,506	1,985	57	↑ 18
Hispanic	4,406	1,518	34	4,898	1,641	34	5,343	2,834	53	↑ 19
Native Hawaiian/ Pacific Islander	27	13	48	23	-	-	23	-	-	-
2 or More Races	739	299	40	721	244	34	720	412	57	↑ 17
White	10,451	4,909	47	10,267	3,874	38	10,172	6,502	64	↑ 17
Race Unknown	464	138	30	369	117	32	364	161	44	↑ 14

By Voting Method

Not-In-Person Early Vote In-Person Other Provisional Unknown



	2016		2018		2020		2016-2020	
	Voted	Rate	Voted	Rate	Voted	Rate	Change (p.p.)	
Early Vote	5,753	69	4,766	67	10,044	82	13	↑
In-Person on Election Day	2,265	27	2,075	29	1,843	15	-12	↓
Not-In-Person	288	3	196	3	297	2	-1	↓
Other	-	-	-	-	-	-	-	
Provisional	-	-	-	-	-	-	-	
Voting Method Unknown	53	1	44	1	41	0	0	↓

These are estimated rates for vote method utilization, the number of students utilizing each method, and the percent of students utilizing each method. Not all U.S. states provide information on vote method; voting method for voter files from these states are classified "Voting Method Unknown." For a list of these states, see our FAQ. <https://idhe.tufts.edu/nsive/nsive-faq#CampusReports>

By Age Group

	2016	2018	2020
18-21	36%	30%	58%
22-24	39%	33%	57%
25-29	45%	37%	54%
30-39	57%	49%	66%
40-49	68%	64%	77%
50+	77%	72%	82%

Voting is habit-forming and young voters will usually continue as voters in subsequent elections. Also, young voters are more likely to be contacted by campaigns and are visible, and therefore significant, to elected officials. While in the past, we have seen voting rates increase across age groups, in recent cycles, the most significant increases have been among first-time and the youngest voters. Some colleges serve primarily young students, traditionally viewed as students in the 18-21 or 22-24 categories here. Others have much higher numbers of enrolled older undergraduate or graduate students.

Looking Closer

By Age Group

Here, we provide the numbers of students in each age category and the voting rates for each group. These are based on the student's age on the day of the election, as calculated by the National Student Clearinghouse using data from student enrollment records.

	2016			2018			2020			2016-2020 Change (p.p)
	Enrolled	Voted	Rate	Enrolled	Voted	Rate	Enrolled	Voted	Rate	
18-21	10,186	3,717	36	10,342	3,114	30	10,493	6,057	58	↑ 21
22-24	4,976	1,935	39	5,118	1,674	33	5,307	3,007	57	↑ 18
25-29	2,216	991	45	2,228	832	37	2,247	1,222	54	↑ 10
30-39	1,626	922	57	1,598	788	49	1,657	1,093	66	↑ 9
40-49	812	555	68	751	481	64	787	608	77	↑ 9
50+	321	247	77	271	196	72	292	240	82	↑ 5

Looking Closer

By Sex

	2016			2018			2020			2016-2020	
	Enrolled	Voted	Rate	Enrolled	Voted	Rate	Enrolled	Voted	Rate	Change (p.p)	
Female	12,587	5,532	44	12,776	4,678	37	13,255	7,983	60	↑	16
Male	7,550	2,835	38	7,532	2,407	32	7,528	4,244	56	↑	19

These are estimated voting rates for sex groups and the numbers we used to calculate their voting rates. These classifications are provided by campuses and are obtained following the reporting procedures defined by the National Center for Education Statistics (NCES) of the Institute of Education Sciences (IES). Presently, NCES requires institutions to report students as “Male” or “Female” only.*

If you notice missing data in this page, it could mean any of the following for your institution: (i) does not report this data; (ii) did not provide this data in past years; (iii) does not separately submit data for one or more of the demographic groups, or (iv) the data is reported for 10 or fewer students.

*<https://surveys.nces.ed.gov/ipeds/public/survey-materials/faq?faqid=11>

Looking Closer

By Education Level / Undergraduate Class Year

	2016			2018			2020			2016-2020	
	Enrolled	Voted	Rate (%)	Enrolled	Voted	Rate (%)	Enrolled	Voted	Rate (%)	Change (p.p)	
EDUCATION LEVEL											
Undergraduate	17,489	6,817	39	17,846	5,816	33	18,022	10,319	57	↑	18
Graduate	2,569	1,510	59	2,426	1,248	51	2,739	1,893	69	↑	10
Class Unknown	79	40	51	36	21	58	22	15	68	↑	18
CLASS YEAR											
First Year	3,718	33	1,220	3,608	26	926	3,362	53	1,780	↑	20
Second Year	3,648	37	1,347	3,623	30	1,083	3,649	57	2,071	↑	20
Upper Level	10,165	42	4,264	10,620	36	3,805	11,015	59	6,467	↑	17
ENROLLMENT STATUS											
Full-time	14,886	5,695	38	15,259	4,938	32	15,341	8,879	58	↑	20
Part-time	5,251	2,672	51	5,049	2,147	43	5,442	3,348	62	↑	11

These are estimated voting rates by Education Level (undergraduate/graduate), Class Year, and Enrollment Status (full-time/part-time), and the numbers we used to calculate these rates.

If you notice missing data in this page, it could mean any of the following for your institution: (i) does not report this data; (ii) did not provide this data in past years; (iii) does not separately submit data for one or more of the demographic groups, or (iv) the data is reported for 10 or fewer students.

By Field of Study

FIELDS	2016			2018			2020			2016-2020 RateChange (p.p)
	Enrolled	Voted	Rate	Enrolled	Voted	Rate	Enrolled	Voted	Rate	
Biological and Biomedical Sciences	682	246	36	756	236	31	840	458	55	↑ 18
Business, Management, and Marketing	3,696	1,538	42	3,504	1,174	34	3,407	1,999	59	↑ 17
Communication and Journalism	793	353	45	776	319	41	781	493	63	↑ 19
Communications Technologies/Technicians	194	65	34	245	67	27	321	183	57	↑ 24
Computer and Information Sciences	334	125	37	331	112	34	293	150	51	↑ 14
Education	860	549	64	789	438	56	2,084	1,346	65	↑ 1
Engineering and Engineering Technologies	438	145	33	589	157	27	693	374	54	↑ 21

These are estimated voting rates by field of study, and the numbers we used to calculate the field of study rates. For an explanation of CIP codes, please see our FAQ.* There are roughly 8,000 fields of study among U.S. colleges and universities, so we provide rates for condensed categories.

*<https://tufts.app.box.com/v/idhe-nslve-report-faq>

By Field of Study

FIELDS	2016			2018			2020			2016-2020 Change (p.p)
	Enrolled	Voted	Rate	Enrolled	Voted	Rate	Enrolled	Voted	Rate	
English Language and Literature	301	144	48	275	113	41	248	161	65	↑ 17
Family and Consumer/Human Sciences	157	48	31	151	51	34	115	79	69	↑ 38
Foreign Languages, Literatures, and Lingui..	47	21	45	39	-	-	41	17	41	↓ -3
Health Professions	1,844	699	38	2,004	666	33	2,197	1,254	57	↑ 19
History	488	276	57	479	231	48	446	298	67	↑ 10
Law Enforcement, Firefighting, and Protec..	3,361	1,322	39	3,497	1,144	33	3,715	2,084	56	↑ 17
Liberal Arts and Sciences, and Humanities	170	77	45	165	55	33	187	98	52	↑ 7
Mathematics and Statistics	181	61	34	184	49	27	130	61	47	↑ 13
Multi/Interdisciplinary Studies	1,587	709	45	1,597	569	36	106	60	57	↑ 12
Natural Resources and Conservation	-	-	-	-	-	-	69	46	67	-
Parks, Recreation, Leisure, and Fitness Stu..	760	233	31	754	177	23	730	388	53	↑ 22
Philosophy and Religious Studies	15	-	-	23	-	-	11	-	-	-
Physical Sciences	517	172	33	452	134	30	440	243	55	↑ 22

By Field of Study

FIELDS	2016			2018			2020			2016-2020 Change (p.p)
	Enrolled	Voted	Rate	Enrolled	Voted	Rate	Enrolled	Voted	Rate	
Psychology	1,022	414	41	1,046	367	35	1,258	711	57	↑ 16
Public Administration and Social Service Professions	40	26	65	46	34	74	61	47	77	↑ 12
Social Sciences	469	219	47	419	199	47	465	307	66	↑ 19
Visual and Performing Arts	917	316	34	874	299	34	977	634	65	↑ 30
Unknown	47	26	55	42	22	52	40	25	63	↑ 7

About This Report

Thank you for participating in the National Study of Learning, Voting, and Engagement.

Since NSLVE's launch in 2013, nearly 1,200 colleges and universities have signed up to receive their voting rates for the 2012, 2014, 2016, 2018, and 2020 federal elections.

Along with others, your institution's participation in this study has allowed us to build a robust database of over 50 million college student records, about 10 million for each election year, that serve as a foundation for innovative research on college student political learning and engagement in democracy.

NSLVE is a signature initiative of the Institute for Democracy and Higher Education (IDHE) at Tufts University's Jonathan M. Tisch College of Civic Life. The mission of IDHE is to shift college and university priorities and culture to advance political learning, agency, and equity. We achieve our mission through research, resource development, technical assistance, and advocacy.

About the Data

The voter registration and voting rates in this report reflect the percentage of your institution's students who were eligible to vote and who actually voted in the 2016, 2018, and 2020 elections.

These results are based on enrollment records your institution submitted to the National Student Clearinghouse (NSC) and publicly available voting files collected by L2 Political.

Enrollment lists are adjusted by deducting students under age 18 (at the time of the election), people identified as non-degree seeking and those identified by campuses as "nonresident aliens" (NRAs) (the federal government's category for mostly international students). Unfortunately, not all campuses report NRAs to NSC. For those campuses, we use IPEDS to calculate the number of NRA students on each campus and adjust NSC enrollment numbers to estimate the number of students to remove. We also quality check NRA removals by verifying that there is little to no discrepancy between the number of international students reported by the campus to IPEDS and to NSC. We cannot adjust subgroup analyses absent identification of NRAs verified by the process above. We welcome closer partnerships with individual colleges and universities to provide more accurate rates. For more on the data and the matching process, see our FAQ on Campus Reports.

Sam Houston State University

Thank you for the work you do to improve your students' political learning and engagement. We hope that you find your NSLVE report useful. For up-to-date news on NSLVE data, resources, and to sign up for our newsletter visit: <https://idhe.tufts.edu>.

References: IDHE encourages report recipients to share this report as broadly as possible, including posting it on the college or university's website. When doing so, please use the following citation: Institute for Democracy & Higher Education: National Study of Learning, Voting and Engagement. (2021). 2016, 2018, and 2020 report for _____ [name of institution]. Medford, MA.



Barnum Hall
163 Packard Ave.
Medford, MA 02155

tischcollege@tufts.edu
617.627.3453



Institute for Democracy & Higher Education:
National Study of Learning, Voting, and Engagement
Barnum Hall, Medford, MA 02155

Follow Us on Twitter: @TuftsIDHE
NSLVE@tufts.edu
617.627.0620