



October 2021

# Student Voting Rates for Saint Paul College

2020 NSLVE Campus Report

**October 2021**

**Dear Colleagues:**

We are pleased to send this tailored report containing your students' voting rates for 2020. This report contains three years of relevant topline data: 2016, 2018, and 2020. As always, we disaggregate the data so you can better identify and address gaps in participation.

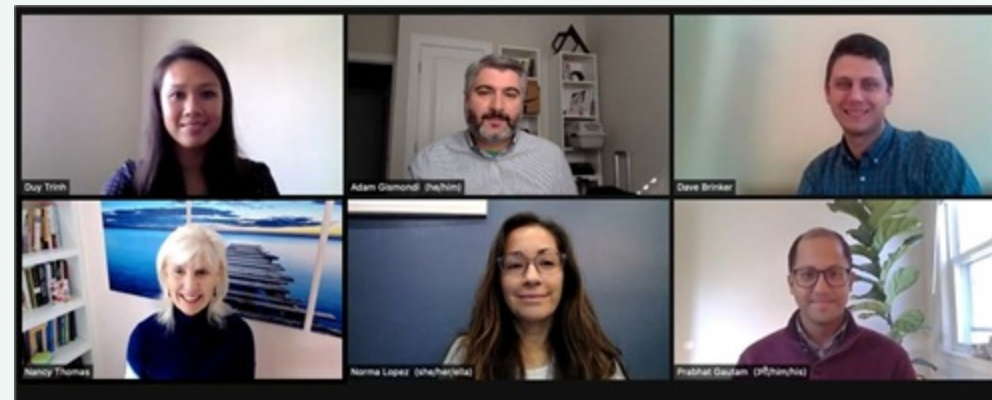
College and university students participated in record-breaking numbers in the 2020 election. In 2016, the Average Institutional Voting Rate was 53%. This year, it jumped to 66%. We encourage you to review Democracy Counts 2020, our most recent national report.

As in past years, we urge you to share this report widely and strategically, particularly with faculty who, in 2020, were often the most consistent communicators with students about ever-changing voting conditions and deadlines. We also urge you to review our recommendations for engaging elections to cultivate a robust and healthy campus climate for political engagement, discourse, equity, and participation: Election Imperatives (2019) and the more recent Election Imperatives: A Time of Physical Distancing and Social Action. Since "pervasive political discussions" and attentiveness to the campus culture around speech and academic freedom are among our top recommendations, we direct you to our discussion guides on talking about your NSLVE report, on free speech and inclusion, and on hot topics, our Making Sense of ... guides.

Finally, we always encourage you to work with us. Help us help you get better data by reaching out. Email [IDHE@Tufts.edu](mailto:IDHE@Tufts.edu) for more information. And as always, watch your inbox for our periodic newsletter, IDHE Update, for announcements about upcoming releases and new resources.

Congratulations on engaging your students in the 2020 election. Remember, student political learning is a year-round objective. Elections may be episodic, but student political engagement should not be.

All the Best,  
IDHE Team



**(Top Row from left) Duy Trinh, Program Administrator; Adam Gismondi, Director of Impact; Dave Brinker, Senior Researcher; (Bottom Row from left) Nancy Thomas, Director; Norma López, Postdoctoral Scholar; Prabhat Gautam, Data Manager.**

We also want to acknowledge and thank **Syed Golam Mohaimen, M.S. student in Data Science at Tufts University** for his contributions toward the creation of these reports.

# In This Report

This report presents data on student voter participation rates for your campus. The topline counts on page 5 tells you how many students voted, but we encourage you to look carefully at the data on subsequent pages to learn who voted. Data are presented in the form of vessel charts, overlapping donut charts, and tables.

	2014			2018			2014-2018 Change (p.p.)
	Enrolled	Voted	Rate (%)	Enrolled	Voted	Rate (%)	
Asian	-	-	-	-	-	-	-
American Indian/ Alaska Native	-	-	-	-	-	-	-
Black	-	-	-	-	-	-	-
Hispanic	-	-	-	-	-	-	-

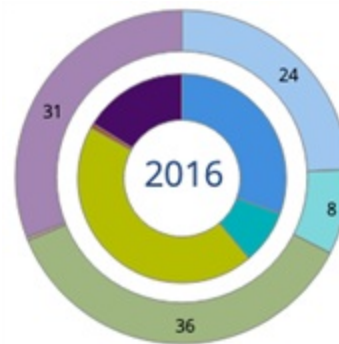
## Tables

The tables show, on the left-side columns, the numbers of students and the rates from 2016, 2018, and 2020. On the left-side, percentage point (p.p.) changes between 2016 and 2020. A red down arrow indicates a decrease, a green up arrow indicates an increase, and a yellow arrow pointing to the right indicates no change. "-" in these tables indicates that the data is unavailable/missing, or is available for 10 or less students.



## Vessel Chart

This chart shows rates out of 100%, with arrows to the right of each bar representing relevant national averages (medians), which you can find in IDHE's national report Democracy Counts 2020.



## Overlapping Donut Chart

This chart is used to show the breakdown of vote method utilization (page 10), with the outer ring showing your campus method utilization and the inner ring showing the national breakdown. These are described in percentages.

# Voting, Registration and Yield Rates

## YOUR INSTITUTION

60.4%

2020 Voting Rate

+6.2

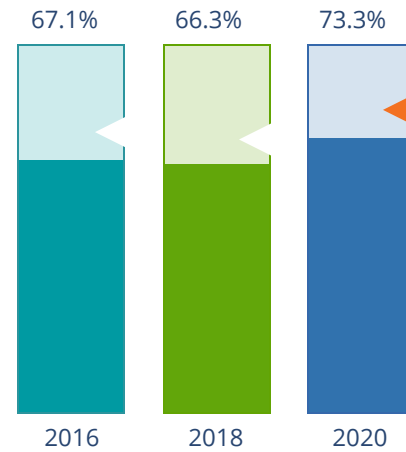
Change From 2016

## ALL INSTITUTIONS

66%

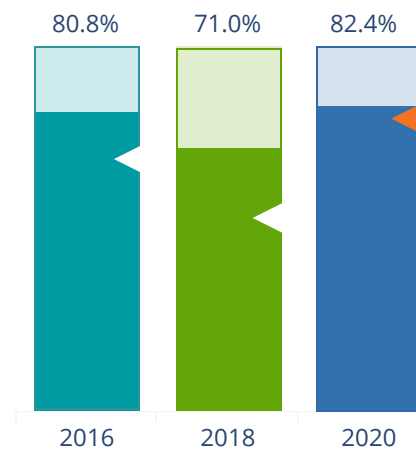
2020 Voting Rate

## REGISTRATION RATE



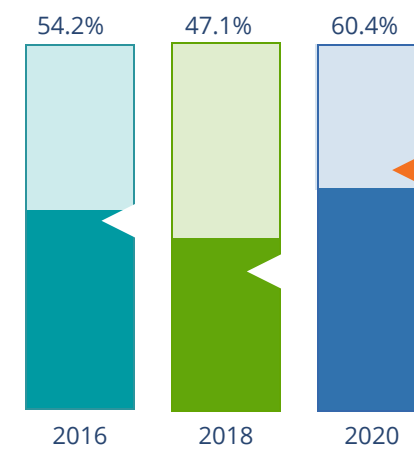
The **Registration Rate** is the percent of your voting-eligible students who registered to vote.

## VOTING RATE OF REGISTERED STUDENTS



The **Voting Rate of Registered Students** is the percent of registered students who voted on Election Day. We often refer to this as the “yield” rate.

## VOTING RATE



The **Voting Rate** is the percentage of eligible students who voted on Election Day. The voting rate is also the product of the registration and yield rates.

# Looking Closer

## Voting and Registration Rates

	2016	2018	2020	2016-2020 Change (p.p.)
<b>Total Student Enrollment</b>	5,898	5,613	4,557	↓ -1,341
(Age under 18/Unknown)	-	-	-	-
(NSC reported non-resident aliens)	15	-	57	↑ 42
(FERPA records blocked)	-	-	-	-
(Non-Degree Seeking Students)	-	-	-	-
<b>Total eligible voters</b>	5,870	5,592	4,493	↓ -1,377
<b>Number of students who registered</b>	3,936	3,710	3,295	↓ -641
<b>Number of students who voted</b>	3,181	2,635	2,715	↓ -466
<b>Registration Rate %</b>	67	66	73	↑ 6
<b>Voting Rate of Registered Students %</b>	81	71	82	↑ 2
<b>Voting Rate %</b>	54	47	60	↑ 6

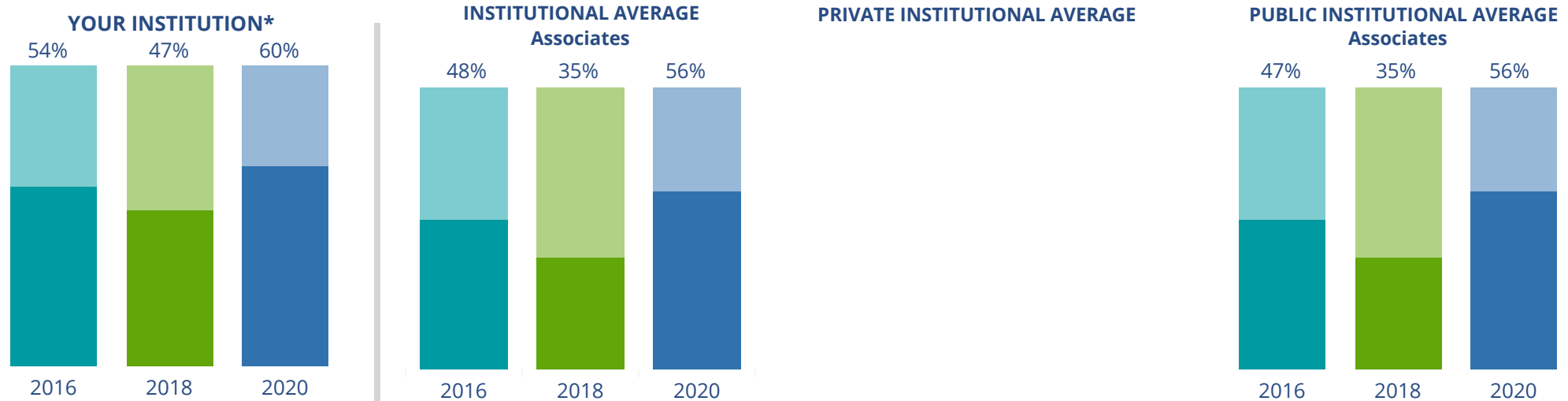
**This page provides the numbers we used to calculate your voting, registration, and yield rates.** The sub-categories under total student enrollment are the adjustments that we make to account for students who are ineligible to vote due to age or citizenship status. We also exclude, when correctly flagged, students who are not pursuing degrees.

We have removed non-resident aliens (international students) based on your institution's enrollment submission to the National Student Clearinghouse. This is indicated by "NSC reported non-resident aliens" on this page.

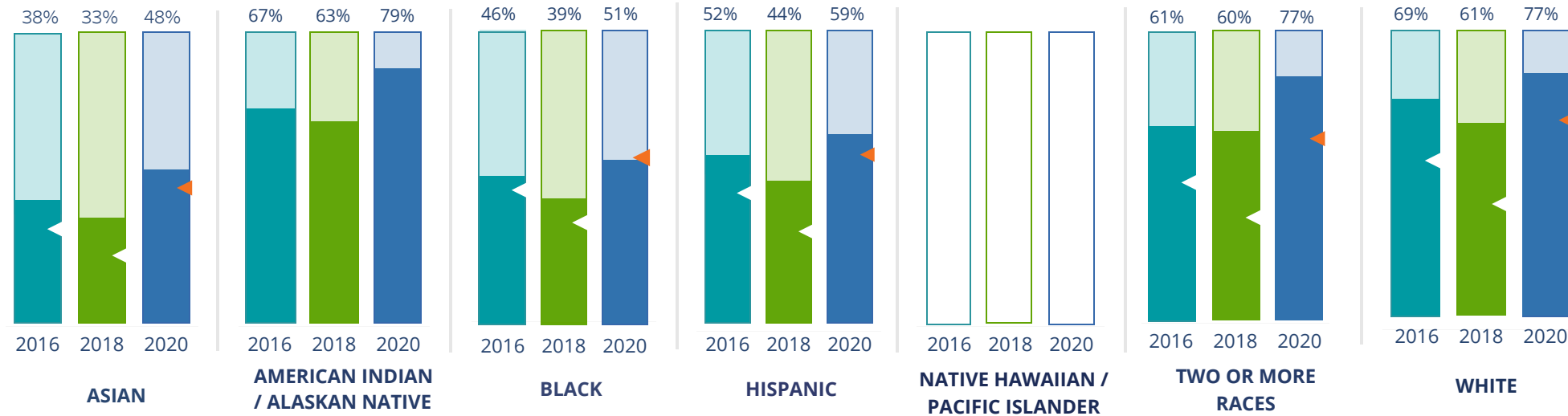
## By Institution Types



These are estimated voting rates of your institution compared to the average voting rates of similar institutions in NSLVE. \*"Your Institution" chart is presented at a different scale.



## By Race / Ethnicity



**These are estimated voting rates for race / ethnicity groups.** These classifications are provided by campuses and are obtained following race reporting procedures\* defined by the National Center for Education Statistics of the Institute of Education Sciences (IES). Please see our FAQ for more detail on why we cannot report national benchmark for some of the demographic groups:

<https://tufts.app.box.com/v/idhe-nslve-report-faq>

If you notice unavailable/missing data in this page, it could mean any of the following for your institution: (i) does not report this data; (ii) did not provide this data in past years; (iii) does not separately submit data for one or more of the demographic groups, or (iv) the data is reported for 10 or fewer students.

\* <https://nces.ed.gov/ipeds/report-your-data/race-ethnicity-collecting-data-for-reporting-purposes>

# Looking Closer

## By Race/Ethnicity

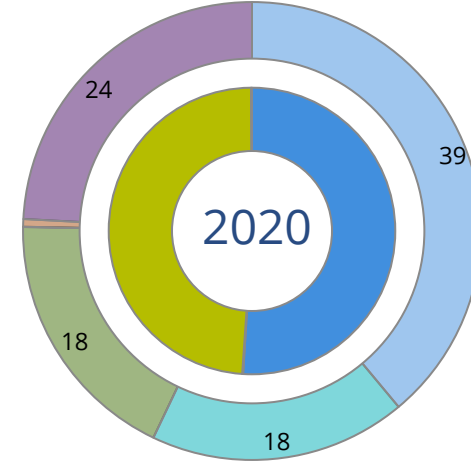
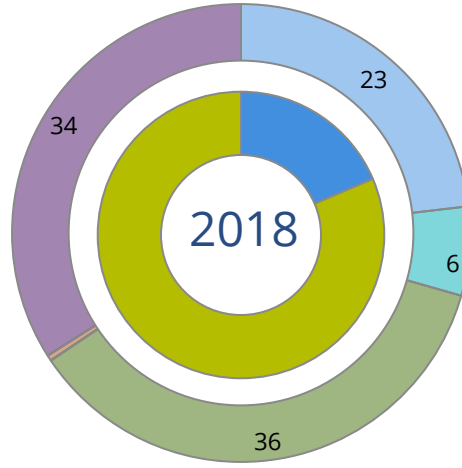
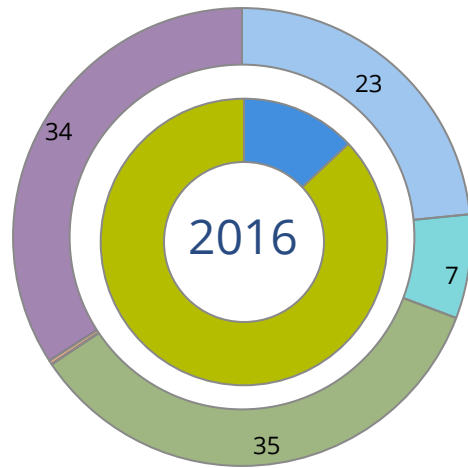
**This page provides the numbers we used to calculate race / ethnicity group voting rates.** We include the counts of students and the change in rates between the two most recent comparable election years. If you notice unavailable/missing data in this page, it could mean any of the following for your institution: (i) does not report this data; (ii) did not provide this data in past years; (iii) does not separately submit data for one or more of the demographic groups, or (iv) the data is reported for 10 or fewer students.

	2016			2018			2020			2016-2020 Change (p.p)
	Enrolled	Voted	Rate	Enrolled	Voted	Rate	Enrolled	Voted	Rate	
<b>Asian</b>	1,139	435	38	1,038	339	33	804	386	48	↑ 10
<b>American Indian/ Alaska Native</b>	30	20	67	24	15	63	19	15	79	↑ 12
<b>Black</b>	1,701	781	46	1,800	703	39	1,535	776	51	↑ 5
<b>Hispanic</b>	503	262	52	469	206	44	390	228	58	↑ 6
<b>Native Hawaiian/ Pacific Islander</b>	-	-	-	-	-	-	-	-	-	-
<b>2 or More Races</b>	292	178	61	292	174	60	208	160	77	↑ 16
<b>White</b>	2,143	1,472	69	1,919	1,170	61	1,465	1,120	76	↑ 8
<b>Race Unknown</b>	55	29	53	50	28	56	72	30	42	↓ -11



# By Voting Method

■ Not-In-Person  
 ■ Early Vote  
 ■ In-Person  
 ■ Other  
 ■ Provisional  
 ■ Unknown



	2016		2018		2020		2016-2020	
	Voted	Rate	Voted	Rate	Voted	Rate	Change (p.p.)	
Early Vote	-	-	-	-	-	-	-	-
In-Person on Election Day	2,768	87	2,146	81	1,326	49	-38	↓
Not-In-Person	412	13	489	19	1,384	51	38	↑
Other	-	-	-	-	-	-	-	-
Provisional	-	-	-	-	-	-	-	-
Voting Method Unknown	-	-	-	-	-	-	-	-

**These are estimated rates for vote method utilization, the number of students utilizing each method, and the percent of students utilizing each method.** Not all U.S. states provide information on vote method; voting method for voter files from these states are classified "Voting Method Unknown." For a list of these states, see our FAQ. <https://idhe.tufts.edu/nsive/nsive-faq#CampusReports>

## By Age Group

	2016	2018	2020
18-21	52%	45%	60%
22-24	50%	41%	55%
25-29	53%	45%	58%
30-39	57%	51%	62%
40-49	61%	58%	72%
50+	72%	71%	81%

**Voting is habit-forming and young voters will usually continue as voters in subsequent elections.**

Also, young voters are more likely to be contacted by campaigns and are visible, and therefore significant, to elected officials. While in the past, we have seen voting rates increase across age groups, in recent cycles, the most significant increases have been among first-time and the youngest voters. Some colleges serve primarily young students, traditionally viewed as students in the 18-21 or 22-24 categories here. Others have much higher numbers of enrolled older undergraduate or graduate students.

# Looking Closer

## By Age Group

**Here, we provide the numbers of students in each age category and the voting rates for each group.** These are based on the student's age on the day of the election, as calculated by the National Student Clearinghouse using data from student enrollment records.

	2016			2018			2020			2016-2020	
	Enrolled	Voted	Rate	Enrolled	Voted	Rate	Enrolled	Voted	Rate	Change (p.p)	
<b>18-21</b>	1,972	1,021	52	2,125	965	45	1,731	1,031	60	↑ 8	
<b>22-24</b>	986	495	50	943	385	41	721	399	55	↑ 5	
<b>25-29</b>	1,171	619	53	992	448	45	855	496	58	↑ 5	
<b>30-39</b>	1,077	612	57	1,009	510	51	804	502	62	↑ 6	
<b>40-49</b>	404	248	61	335	193	58	253	183	72	↑ 11	
<b>50+</b>	260	186	72	188	134	71	129	104	81	↑ 9	

# Looking Closer

## By Sex

	2016			2018			2020			2016-2020	
	Enrolled	Voted	Rate	Enrolled	Voted	Rate	Enrolled	Voted	Rate	Change (p.p)	
Female	3,117	1,775	57	2,939	1,428	49	2,549	1,565	61	↑	4
Male	2,747	1,403	51	2,637	1,197	45	1,923	1,140	59	↑	8

**These are estimated voting rates for sex groups and the numbers we used to calculate their voting rates.** These classifications are provided by campuses and are obtained following the reporting procedures defined by the National Center for Education Statistics (NCES) of the Institute of Education Sciences (IES). Presently, NCES requires institutions to report students as “Male” or “Female” only.\*

If you notice missing data in this page, it could mean any of the following for your institution: (i) does not report this data; (ii) did not provide this data in past years; (iii) does not separately submit data for one or more of the demographic groups, or (iv) the data is reported for 10 or fewer students.

\*<https://surveys.nces.ed.gov/ipeds/public/survey-materials/faq?faqid=11>

# Looking Closer

## By Education Level / Undergraduate Class Year

	2016			2018			2020			2016-2020	
	Enrolled	Voted	Rate (%)	Enrolled	Voted	Rate (%)	Enrolled	Voted	Rate (%)	Change (p.p)	
<b>EDUCATION LEVEL</b>											
<b>Undergraduate</b>	3,746	1,948	52	3,677	1,653	45	2,967	1,717	58	↑	6
<b>Graduate</b>	-	-	-	-	-	-	-	-	-	-	-
<b>Class Unknown</b>	2,124	995	47	1,915	759	40	1,526	778	51	↑	4
<b>CLASS YEAR</b>											
<b>First Year</b>	2,265	48	1,093	2,006	41	828	1,445	54	786	↑	6
<b>Second Year</b>	2,685	55	1,480	2,653	47	1,245	2,255	62	1,387	↑	6
<b>Upper Level</b>	-	-	-	-	-	-	-	-	-	-	-
<b>ENROLLMENT STATUS</b>											
<b>Full-time</b>	2,377	1,252	53	2,235	1,022	46	1,792	1,090	61	↑	8
<b>Part-time</b>	3,493	1,929	55	3,357	1,613	48	2,701	1,625	60	↑	5

**These are estimated voting rates by Education Level (undergraduate/graduate), Class Year, and Enrollment Status (full-time/part-time), and the numbers we used to calculate these rates.**

If you notice missing data in this page, it could mean any of the following for your institution: (i) does not report this data; (ii) did not provide this data in past years; (iii) does not separately submit data for one or more of the demographic groups, or (iv) the data is reported for 10 or fewer students.

## By Field of Study

FIELDS	2016			2018			2020			2016-2020	
	Enrolled	Voted	Rate	Enrolled	Voted	Rate	Enrolled	Voted	Rate	Change (p.p)	
Biological and Biomedical Sciences	15	-	-	73	39	53	76	49	64	-	
Business, Management, and Marketing	657	344	52	583	276	47	423	249	59	↑	7
Computer and Information Sciences	378	183	48	402	156	39	353	191	54	↑	6
Construction Trades	454	276	61	482	262	54	274	186	68	↑	7
Education	-	-	-	-	-	-	13	-	-	-	
Engineering and Engineering Technologies	66	30	45	71	31	44	55	29	53	↑	7
Family and Consumer/Human Sciences	145	89	61	113	54	48	74	45	61	↓	-1

**These are estimated voting rates by field of study, and the numbers we used to calculate the field of study rates.** For an explanation of CIP codes, please see our FAQ.\* There are roughly 8,000 fields of study among U.S. colleges and universities, so we provide rates for condensed categories.

\*<https://tufts.app.box.com/v/idhe-nslve-report-faq>

## By Field of Study

FIELDS	2016			2018			2020			2016-2020 Change (p.p)
	Enrolled	Voted	Rate	Enrolled	Voted	Rate	Enrolled	Voted	Rate	
Foreign Languages, Literatures, and Lingui..	125	87	70	108	73	68	77	61	79	↑ 10
Health Professions	1,100	568	52	1,148	514	45	1,120	623	56	↑ 4
Liberal Arts and Sciences, and Humanities	2,067	1,126	54	1,760	840	48	1,285	779	61	↑ 6
Mechanic and Repair Technologies/Techni..	119	45	38	101	24	24	77	46	60	↑ 22
Personal and Culinary Services	219	130	59	244	112	46	224	149	67	↑ 7
Physical Sciences	-	-	-	24	14	58	23	16	70	-
Precision Production	241	123	51	202	81	40	156	93	60	↑ 9
Social Sciences	-	-	-	12	-	-	-	-	-	-
Visual and Performing Arts	23	13	57	27	15	56	21	12	57	↑ 1
Unknown	231	146	63	242	137	57	232	172	74	↑ 11

# About This Report

## Thank you for participating in the National Study of Learning, Voting, and Engagement.

Since NSLVE's launch in 2013, nearly 1,200 colleges and universities have signed up to receive their voting rates for the 2012, 2014, 2016, 2018, and 2020 federal elections.

Along with others, your institution's participation in this study has allowed us to build a robust database of over 50 million college student records, about 10 million for each election year, that serve as a foundation for innovative research on college student political learning and engagement in democracy.

NSLVE is a signature initiative of the Institute for Democracy and Higher Education (IDHE) at Tufts University's Jonathan M. Tisch College of Civic Life. The mission of IDHE is to shift college and university priorities and culture to advance political learning, agency, and equity. We achieve our mission through research, resource development, technical assistance, and advocacy.

### About the Data

The voter registration and voting rates in this report reflect the percentage of your institution's students who were eligible to vote and who actually voted in the 2016, 2018, and 2020 elections.

These results are based on enrollment records your institution submitted to the National Student Clearinghouse (NSC) and publicly available voting files collected by L2 Political.

Enrollment lists are adjusted by deducting students under age 18 (at the time of the election), people identified as non-degree seeking and those identified by campuses as "nonresident aliens" (NRAs) (the federal government's category for mostly international students). Unfortunately, not all campuses report NRAs to NSC. For those campuses, we use IPEDS to calculate the number of NRA students on each campus and adjust NSC enrollment numbers to estimate the number of students to remove. We also quality check NRA removals by verifying that there is little to no discrepancy between the number of international students reported by the campus to IPEDS and to NSC. We cannot adjust subgroup analyses absent identification of NRAs verified by the process above. We welcome closer partnerships with individual colleges and universities to provide more accurate rates. For more on the data and the matching process, see our FAQ on Campus Reports.



Saint Paul College

Thank you for the work you do to improve your students' political learning and engagement. We hope that you find your NSLVE report useful. For up-to-date news on NSLVE data, resources, and to sign up for our newsletter visit: <https://idhe.tufts.edu>.

References: IDHE encourages report recipients to share this report as broadly as possible, including posting it on the college or university's website. When doing so, please use the following citation: Institute for Democracy & Higher Education: National Study of Learning, Voting and Engagement. (2021). 2016, 2018, and 2020 report for \_\_\_\_\_ [name of institution]. Medford, MA.



Barnum Hall  
163 Packard Ave.  
Medford, MA 02155

tischcollege@tufts.edu  
617.627.3453



Institute for Democracy & Higher Education:  
National Study of Learning, Voting, and Engagement  
Barnum Hall, Medford, MA 02155

Follow Us on Twitter: @TuftsIDHE  
NSLVE@tufts.edu  
617.627.0620