



October 2021

Student Voting Rates for Pennsylvania State University

2020 NSLVE Campus Report



Jonathan M. Tisch
College of Civic Life



INSTITUTE FOR DEMOCRACY
& HIGHER EDUCATION

October 2021

Dear Colleagues:

We are pleased to send this tailored report containing your students' voting rates for 2020. This report contains three years of relevant topline data: 2016, 2018, and 2020. As always, we disaggregate the data so you can better identify and address gaps in participation.

College and university students participated in record-breaking numbers in the 2020 election. In 2016, the Average Institutional Voting Rate was 53%. This year, it jumped to 66%. We encourage you to review Democracy Counts 2020, our most recent national report.

As in past years, we urge you to share this report widely and strategically, particularly with faculty who, in 2020, were often the most consistent communicators with students about ever-changing voting conditions and deadlines. We also urge you to review our recommendations for engaging elections to cultivate a robust and healthy campus climate for political engagement, discourse, equity, and participation: Election Imperatives (2019) and the more recent Election Imperatives: A Time of Physical Distancing and Social Action. Since "pervasive political discussions" and attentiveness to the campus culture around speech and academic freedom are among our top recommendations, we direct you to our discussion guides on talking about your NSLVE report, on free speech and inclusion, and on hot topics, our Making Sense of ... guides.

Finally, we always encourage you to work with us. Help us help you get better data by reaching out. Email IDHE@Tufts.edu for more information. And as always, watch your inbox for our periodic newsletter, IDHE Update, for announcements about upcoming releases and new resources.

Congratulations on engaging your students in the 2020 election. Remember, student political learning is a year-round objective. Elections may be episodic, but student political engagement should not be.

All the Best,
IDHE Team



(Top Row from left) Duy Trinh, Program Administrator; Adam Gismondi, Director of Impact; Dave Brinker, Senior Researcher;
(Bottom Row from left) Nancy Thomas, Director; Norma López, Postdoctoral Scholar; Prabhat Gautam, Data Manager.

We also want to acknowledge and thank **Syed Golam Mohaimen, M.S. student in Data Science at Tufts University** for his contributions toward the creation of these reports.

In This Report

This report presents data on student voter participation rates for your campus. The topline counts on page 5 tells you how many students voted, but we encourage you to look carefully at the data on subsequent pages to learn who voted. Data are presented in the form of vessel charts, overlapping donut charts, and tables.



Vessel Chart

This chart shows rates out of 100%, with arrows to the right of each bar representing relevant national averages (medians), which you can find in IDHE's national report Democracy Counts 2020.

	2014			2018			2014-2018
	Enrolled	Voted	Rate (%)	Enrolled	Voted	Rate (%)	Change (p.p.)
Asian	-	-	-	-	-	-	-
American Indian/ Alaska Native	-	-	-	-	-	-	-
Black	-	-	-	-	-	-	-
Hispanic	-	-	-	-	-	-	-

Tables

The tables show, on the left-side columns, the numbers of students and the rates from 2016, 2018, and 2020. On the left-side, percentage point (p.p.) changes between 2016 and 2020. A red down arrow indicates a decrease, a green up arrow indicates an increase, and a yellow arrow pointing to the right indicates no change. "-" in these tables indicates that the data is unavailable/missing, or is available for 10 or less students.



Overlapping Donut Chart

This chart is used to show the breakdown of vote method utilization (page 10), with the outer ring showing your campus method utilization and the inner ring showing the national breakdown. These are described in percentages.

Voting, Registration and Yield Rates

YOUR INSTITUTION

68.8%

2020 Voting Rate

+13.0

Change From 2016

ALL INSTITUTIONS

66%

2020 Voting Rate

REGISTRATION RATE

Year	Rate
2016	78.5%
2018	74.2%
2020	83.8%

The **Registration Rate** is the percent of your voting-eligible students who registered to vote.

VOTING RATE OF REGISTERED STUDENTS

Year	Rate
2016	71.0%
2018	47.8%
2020	82.0%

The **Voting Rate of Registered Students** is the percent of registered students who voted on Election Day. We often refer to this as the “yield” rate.

VOTING RATE

Year	Rate
2016	55.8%
2018	35.5%
2020	68.8%

The **Voting Rate** is the percentage of eligible students who voted on Election Day. The voting rate is also the product of the registration and yield rates.

Looking Closer

Voting and Registration Rates

	2016	2018	2020	2016-2020 Change (p.p.)
Total Student Enrollment	92,723	90,774	89,107	↓ -3,616
(Age under 18/Unknown)	–	–	–	–
(IPEDS estimated non-resident aliens)	9,845	10,282	9,189	↓ -656
(FERPA records blocked)	42	32	131	↑ 89
(Non-Degree Seeking Students)	2,649	2,174	2,099	↓ -550
Total eligible voters	80,182	78,284	77,687	↓ -2,495
Number of students who registered	62,974	58,117	65,104	↑ 2,130
Number of students who voted	44,716	27,770	53,415	↑ 8,699
Registration Rate %	79	74	84	↑ 5
Voting Rate of Registered Students %	71	48	82	↑ 11
Voting Rate %	56	35	69	↑ 13

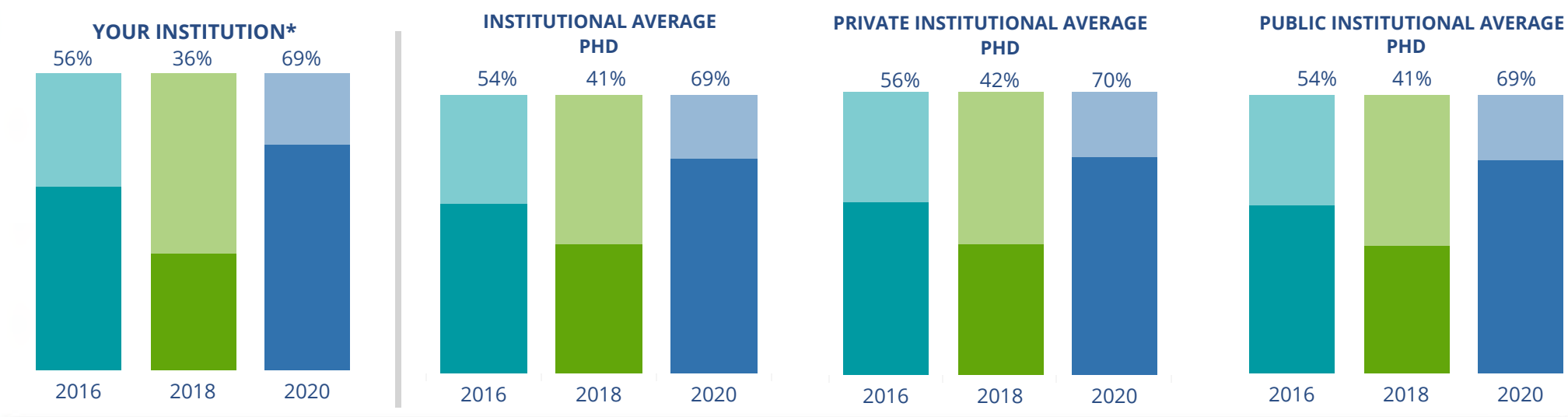
This page provides the numbers we used to calculate your voting, registration, and yield rates. The sub-categories under total student enrollment are the adjustments that we make to account for students who are ineligible to vote due to age or citizenship status. We also exclude, when correctly flagged, students who are not pursuing degrees.

We use IPEDS-derived estimates of NRAs when institutions do not submit non-resident alien status data to NSC, or we cannot verify the accuracy of the reported counts. This estimate is given by "IPEDS estimated non-resident aliens" on this page. If you believe the number of international students reported on this report is incorrect, you can manually adjust your institution's voting rates by using our recalculation tool. <https://id-he.tufts.edu/nsive/nsive-recalculation-tool>.

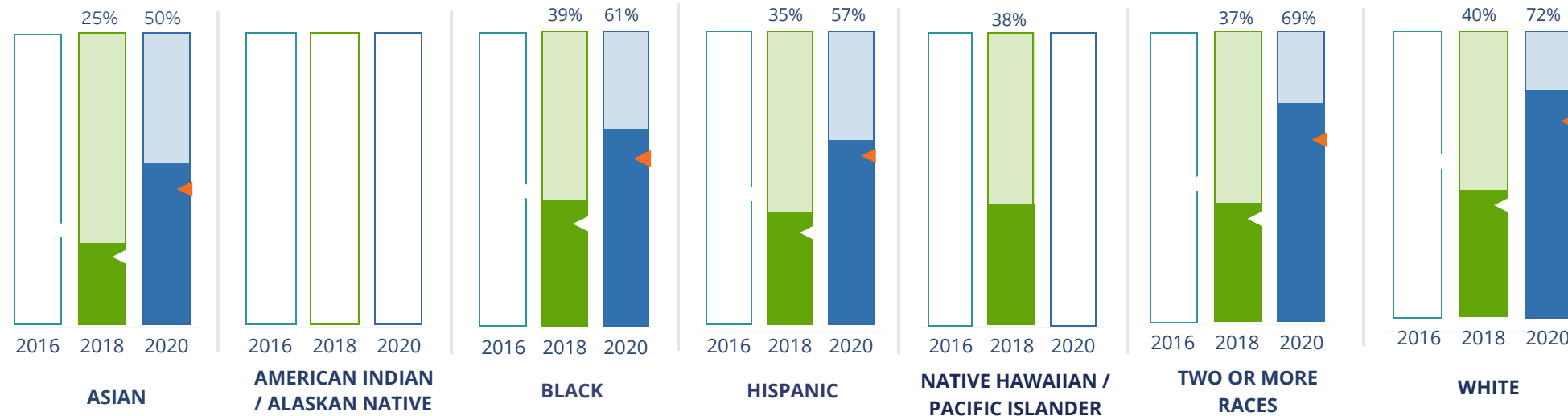
By Institution Types



These are estimated voting rates of your institution compared to the average voting rates of similar institutions in NSLVE. *"Your Institution" chart is presented at a different scale.



By Race / Ethnicity



These are estimated voting rates for race / ethnicity groups. These classifications are provided by campuses and are obtained following race reporting procedures* defined by the National Center for Education Statistics of the Institute of Education Sciences (IES). Please see our FAQ for more detail on why we cannot report national benchmark for some of the demographic groups:

<https://tufts.app.box.com/v/idhe-nsive-report-faq>

If you notice unavailable/missing data in this page, it could mean any of the following for your institution: (i) does not report this data; (ii) did not provide this data in past years; (iii) does not separately submit data for one or more of the demographic groups, or (iv) the data is reported for 10 or fewer students.

* <https://nces.ed.gov/ipeds/report-your-data/race-ethnicity-collecting-data-for-reporting-purposes>

Looking Closer

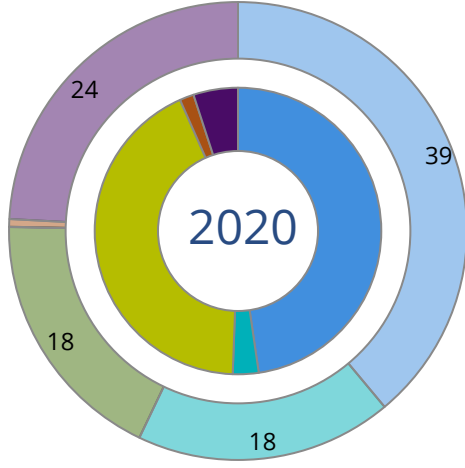
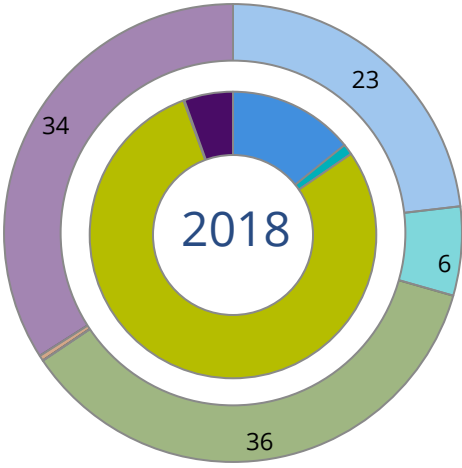
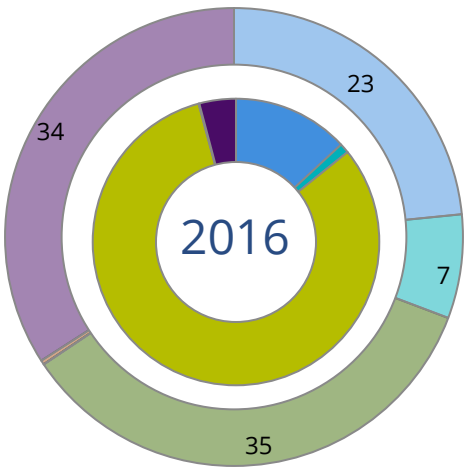
By Race/Ethnicity

This page provides the numbers we used to calculate race / ethnicity group voting rates. We include the counts of students and the change in rates between the two most recent comparable election years. If you notice unavailable/missing data in this page, it could mean any of the following for your institution: (i) does not report this data; (ii) did not provide this data in past years; (iii) does not separately submit data for one or more of the demographic groups, or (iv) the data is reported for 10 or fewer students.

	2016			2018			2020			2016-2020
	Enrolled	Voted	Rate	Enrolled	Voted	Rate	Enrolled	Voted	Rate	Change (p.p)
Asian	-	-	-	1,649	415	25	392	197	50	-
American Indian/ Alaska Native	-	-	-	33	-	-	11	-	-	-
Black	-	-	-	1,602	622	39	431	261	61	-
Hispanic	-	-	-	1,871	647	35	452	258	57	-
Native Hawaiian/ Pacific Islander	-	-	-	37	14	38	-	-	-	-
2 or More Races	-	-	-	718	268	37	181	124	69	-
White	-	-	-	18,923	7,557	40	4,240	3,039	72	-
Race Unknown	89,664	44,716	50	63,399	18,238	29	80,867	49,524	61	↑ 11

By Voting Method

Not-In-Person Early Vote In-Person Other Provisional Unknown



	2016		2018		2020		2016-2020	
	Voted	Rate	Voted	Rate	Voted	Rate	Change (p.p.)	
Early Vote	491	1	341	1	1,564	3	2	↑
In-Person on Election Day	36,487	82	21,947	79	22,845	43	-39	↓
Not-In-Person	5,845	13	3,935	14	25,455	48	35	↑
Other	-	-	-	-	-	-	-	
Provisional	28	0	18	0	876	2	2	↑
Voting Method Unknown	1,864	4	1,528	6	2,671	5	1	↑

These are estimated rates for vote method utilization, the number of students utilizing each method, and the percent of students utilizing each method. Not all U.S. states provide information on vote method; voting method for voter files from these states are classified "Voting Method Unknown." For a list of these states, see our FAQ. <https://idhe.tufts.edu/nsive/nsive-faq#CampusReports>

By Age Group

	2016	2018	2020
18-21	49%	27%	63%
22-24	47%	31%	60%
25-29	49%	37%	55%
30-39	55%	43%	58%
40-49	68%	55%	69%
50+	76%	67%	79%

Voting is habit-forming and young voters will usually continue as voters in subsequent elections. Also, young voters are more likely to be contacted by campaigns and are visible, and therefore significant, to elected officials. While in the past, we have seen voting rates increase across age groups, in recent cycles, the most significant increases have been among first-time and the youngest voters. Some colleges serve primarily young students, traditionally viewed as students in the 18-21 or 22-24 categories here. Others have much higher numbers of enrolled older undergraduate or graduate students.

Looking Closer

By Age Group

Here, we provide the numbers of students in each age category and the voting rates for each group. These are based on the student's age on the day of the election, as calculated by the National Student Clearinghouse using data from student enrollment records.

	2016			2018			2020			2016-2020	
	Enrolled	Voted	Rate	Enrolled	Voted	Rate	Enrolled	Voted	Rate	Change (p.p)	
18-21	55,550	27,074	49	54,122	14,784	27	53,266	33,616	63	↑	14
22-24	13,818	6,461	47	14,050	4,294	31	13,636	8,170	60	↑	13
25-29	8,857	4,329	49	9,110	3,401	37	8,885	4,903	55	↑	6
30-39	7,610	4,171	55	7,219	3,116	43	7,158	4,122	58	↑	3
40-49	2,759	1,866	68	2,759	1,523	55	2,649	1,822	69	↑	1
50+	1,070	815	76	972	652	67	990	782	79	↑	3

Looking Closer

By Sex

	2016			2018			2020			2016-2020
	Enrolled	Voted	Rate	Enrolled	Voted	Rate	Enrolled	Voted	Rate	Change (p.p)
Female	–	–	–	12,479	4,970	40	2,728	1,738	64	–
Male	–	–	–	15,437	4,853	31	3,953	2,333	59	–

These are estimated voting rates for sex groups and the numbers we used to calculate their voting rates. These classifications are provided by campuses and are obtained following the reporting procedures defined by the National Center for Education Statistics (NCES) of the Institute of Education Sciences (IES). Presently, NCES requires institutions to report students as “Male” or “Female” only.*

If you notice missing data in this page, it could mean any of the following for your institution: (i) does not report this data; (ii) did not provide this data in past years; (iii) does not separately submit data for one or more of the demographic groups, or (iv) the data is reported for 10 or fewer students.

*<https://surveys.nces.ed.gov/ipeds/public/survey-materials/faq?faqid=11>

Looking Closer

By Education Level / Undergraduate Class Year

	2016			2018			2020			2016-2020	
	Enrolled	Voted	Rate (%)	Enrolled	Voted	Rate (%)	Enrolled	Voted	Rate (%)	Change (p.p)	
EDUCATION LEVEL											
Undergraduate	75,954	37,592	49	73,654	21,746	30	71,761	44,727	62	↑	13
Graduate	13,625	7,071	52	14,446	5,961	41	14,693	8,591	58	↑	7
Class Unknown	85	53	62	132	63	48	130	97	75	↑	12
CLASS YEAR											
First Year	15,902	48	7,558	15,393	25	3,894	17,429	60	10,417	↑	12
Second Year	15,023	48	7,261	16,018	26	4,163	15,664	62	9,733	↑	14
Upper Level	43,008	50	21,639	40,575	32	13,063	37,295	64	23,811	↑	14
ENROLLMENT STATUS											
Full-time	74,414	35,916	48	73,899	21,234	29	72,141	44,175	61	↑	13
Part-time	15,249	8,799	58	14,326	6,533	46	14,442	9,240	64	↑	6

These are estimated voting rates by Education Level (undergraduate/graduate), Class Year, and Enrollment Status (full-time/part-time), and the numbers we used to calculate these rates.

If you notice missing data in this page, it could mean any of the following for your institution: (i) does not report this data; (ii) did not provide this data in past years; (iii) does not separately submit data for one or more of the demographic groups, or (iv) the data is reported for 10 or fewer students.

By Field of Study

FIELDS	2016			2018			2020			2016-2020 RateChange (p.p)
	Enrolled	Voted	Rate	Enrolled	Voted	Rate	Enrolled	Voted	Rate	
Architecture	446	202	45	488	127	26	509	318	62	↑ 17
Area, Ethnic, Cultural, and Gender Studies	141	101	72	143	86	60	133	99	74	↑ 3
Biological and Biomedical Sciences	2,666	1,382	52	3,051	1,048	34	3,210	2,168	68	↑ 16
Business, Management, and Marketing	14,893	7,583	51	14,257	4,717	33	14,384	8,798	61	↑ 10
Communication and Journalism	3,679	1,940	53	3,662	1,227	34	3,583	2,354	66	↑ 13
Computer and Information Sciences	5,354	2,515	47	6,044	1,842	30	6,511	3,565	55	↑ 8
Education	3,234	1,988	61	3,365	1,450	43	3,318	2,380	72	↑ 10

These are estimated voting rates by field of study, and the numbers we used to calculate the field of study rates. For an explanation of CIP codes, please see our FAQ.* There are roughly 8,000 fields of study among U.S. colleges and universities, so we provide rates for condensed categories.

*<https://tufts.app.box.com/v/idhe-nslve-report-faq>

By Field of Study

FIELDS	2016			2018			2020			2016-2020 Change (p.p)
	Enrolled	Voted	Rate	Enrolled	Voted	Rate	Enrolled	Voted	Rate	
Engineering and Engineering Technologies	15,782	6,967	44	15,448	3,942	26	14,524	8,437	58	↑ 14
English Language and Literature	444	295	66	417	225	54	368	278	76	↑ 9
Family and Consumer/Human Sciences	1,512	832	55	995	387	39	871	578	66	↑ 11
Foreign Languages, Literatures, and Lingui..	285	159	56	275	105	38	240	136	57	↑ 1
Health Professions	5,490	3,106	57	5,531	1,907	34	5,337	3,746	70	↑ 14
History	217	143	66	237	123	52	291	202	69	↑ 4
Law Enforcement, Firefighting, and Protec..	1,603	847	53	1,824	632	35	1,829	1,149	63	↑ 10
Legal Professions and Studies	866	468	54	871	338	39	787	469	60	↑ 6
Liberal Arts and Sciences, and Humanities	12,275	5,850	48	10,412	2,688	26	9,793	5,831	60	↑ 12
Mathematics and Statistics	904	312	35	991	240	24	1,007	414	41	↑ 7
Multi/Interdisciplinary Studies	5,228	2,650	51	5,678	1,671	29	5,740	3,541	62	↑ 11
Natural Resources and Conservation	522	291	56	505	215	43	536	407	76	↑ 20
Parks, Recreation, Leisure, and Fitness Stu..	1,141	543	48	1,192	282	24	1,194	798	67	↑ 19
Philosophy and Religious Studies	74	43	58	89	39	44	78	39	50	↓ -8

By Field of Study

FIELDS	2016			2018			2020			2016-2020 Change (p.p)
	Enrolled	Voted	Rate	Enrolled	Voted	Rate	Enrolled	Voted	Rate	
Physical Sciences	2,388	1,170	49	2,184	717	33	2,041	1,244	61	↑ 12
Psychology	2,373	1,352	57	2,531	959	38	2,428	1,607	66	↑ 9
Public Administration and Social Service Professions	395	264	67	370	208	56	311	219	70	↑ 4
Science Technologies/Technicians	59	24	41	60	17	28	61	31	51	↑ 10
Social Sciences	3,853	1,814	47	4,197	1,397	33	4,055	2,251	56	↑ 8
Visual and Performing Arts	927	563	61	1,002	415	41	1,037	733	71	↑ 10
Unknown	556	87	16	163	74	45	177	120	68	↑ 52

About This Report

Thank you for participating in the National Study of Learning, Voting, and Engagement.

Since NSLVE's launch in 2013, nearly 1,200 colleges and universities have signed up to receive their voting rates for the 2012, 2014, 2016, 2018, and 2020 federal elections.

Along with others, your institution's participation in this study has allowed us to build a robust database of over 50 million college student records, about 10 million for each election year, that serve as a foundation for innovative research on college student political learning and engagement in democracy.

NSLVE is a signature initiative of the Institute for Democracy and Higher Education (IDHE) at Tufts University's Jonathan M. Tisch College of Civic Life. The mission of IDHE is to shift college and university priorities and culture to advance political learning, agency, and equity. We achieve our mission through research, resource development, technical assistance, and advocacy.

About the Data

The voter registration and voting rates in this report reflect the percentage of your institution's students who were eligible to vote and who actually voted in the 2016, 2018, and 2020 elections.

These results are based on enrollment records your institution submitted to the National Student Clearinghouse (NSC) and publicly available voting files collected by L2 Political.

Enrollment lists are adjusted by deducting students under age 18 (at the time of the election), people identified as non-degree seeking and those identified by campuses as "nonresident aliens" (NRAs) (the federal government's category for mostly international students). Unfortunately, not all campuses report NRAs to NSC. For those campuses, we use IPEDS to calculate the number of NRA students on each campus and adjust NSC enrollment numbers to estimate the number of students to remove. We also quality check NRA removals by verifying that there is little to no discrepancy between the number of international students reported by the campus to IPEDS and to NSC. We cannot adjust subgroup analyses absent identification of NRAs verified by the process above. We welcome closer partnerships with individual colleges and universities to provide more accurate rates. For more on the data and the matching process, see our FAQ on Campus Reports.

Pennsylvania State University

Thank you for the work you do to improve your students' political learning and engagement. We hope that you find your NSLVE report useful. For up-to-date news on NSLVE data, resources, and to sign up for our newsletter visit: <https://idhe.tufts.edu>.

References: IDHE encourages report recipients to share this report as broadly as possible, including posting it on the college or university's website. When doing so, please use the following citation: Institute for Democracy & Higher Education: National Study of Learning, Voting and Engagement. (2021). 2016, 2018, and 2020 report for _____ [name of institution]. Medford, MA.



Barnum Hall
163 Packard Ave.
Medford, MA 02155

tischcollege@tufts.edu
617.627.3453



Institute for Democracy & Higher Education:
National Study of Learning, Voting, and Engagement
Barnum Hall, Medford, MA 02155

Follow Us on Twitter: @TuftsIDHE
NSLVE@tufts.edu
617.627.0620