



October 2021

# **Student Voting Rates for Old Dominion University**

## 2020 NSLVE Campus Report

**October 2021**

**Dear Colleagues:**

We are pleased to send this tailored report containing your students' voting rates for 2020. This report contains three years of relevant topline data: 2016, 2018, and 2020. As always, we disaggregate the data so you can better identify and address gaps in participation.

College and university students participated in record-breaking numbers in the 2020 election. In 2016, the Average Institutional Voting Rate was 53%. This year, it jumped to 66%. We encourage you to review Democracy Counts 2020, our most recent national report.

As in past years, we urge you to share this report widely and strategically, particularly with faculty who, in 2020, were often the most consistent communicators with students about ever-changing voting conditions and deadlines. We also urge you to review our recommendations for engaging elections to cultivate a robust and healthy campus climate for political engagement, discourse, equity, and participation: Election Imperatives (2019) and the more recent Election Imperatives: A Time of Physical Distancing and Social Action. Since "pervasive political discussions" and attentiveness to the campus culture around speech and academic freedom are among our top recommendations, we direct you to our discussion guides on talking about your NSLVE report, on free speech and inclusion, and on hot topics, our Making Sense of ... guides.

Finally, we always encourage you to work with us. Help us help you get better data by reaching out. Email [IDHE@Tufts.edu](mailto:IDHE@Tufts.edu) for more information. And as always, watch your inbox for our periodic newsletter, IDHE Update, for announcements about upcoming releases and new resources.

Congratulations on engaging your students in the 2020 election. Remember, student political learning is a year-round objective. Elections may be episodic, but student political engagement should not be.

All the Best,  
IDHE Team



**(Top Row from left) Duy Trinh, Program Administrator; Adam Gismondi, Director of Impact; Dave Brinker, Senior Researcher;**  
**(Bottom Row from left) Nancy Thomas, Director; Norma López, Postdoctoral Scholar; Prabhat Gautam, Data Manager.**

We also want to acknowledge and thank **Syed Golam Mohaimen, M.S. student in Data Science at Tufts University** for his contributions toward the creation of these reports.

# In This Report

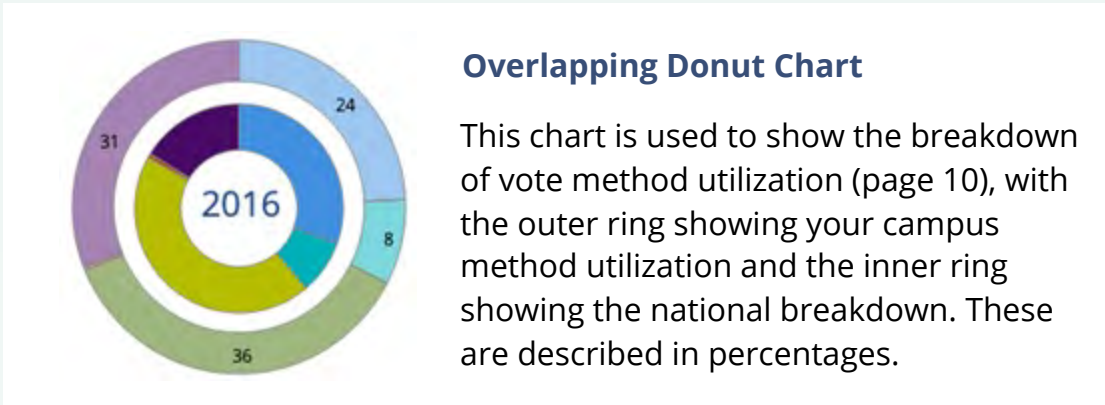
This report presents data on student voter participation rates for your campus. The topline counts on page 5 tells you how many students voted, but we encourage you to look carefully at the data on subsequent pages to learn who voted. Data are presented in the form of vessel charts, overlapping donut charts, and tables.



	2014			2018			2014-2018 Change (p.p.)
	Enrolled	Voted	Rate (%)	Enrolled	Voted	Rate (%)	
Asian	-	-	-	-	-	-	-
American Indian/ Alaska Native	-	-	-	-	-	-	-
Black	-	-	-	-	-	-	-
Hispanic	-	-	-	-	-	-	-

## Tables

The tables show, on the left-side columns, the numbers of students and the rates from 2016, 2018, and 2020. On the left-side, percentage point (p.p.) changes between 2016 and 2020. A red down arrow indicates a decrease, a green up arrow indicates an increase, and a yellow arrow pointing to the right indicates no change. "-" in these tables indicates that the data is unavailable/missing, or is available for 10 or less students.



# Voting, Registration and Yield Rates

YOUR INSTITUTION

69.6%

2020 Voting Rate

+10.3

Change From 2016

ALL INSTITUTIONS

66%

2020 Voting Rate

REGISTRATION RATE

Year	Rate
2016	80.6%
2018	79.4%
2020	85.9%

The **Registration Rate** is the percent of your voting-eligible students who registered to vote.

VOTING RATE OF REGISTERED STUDENTS

Year	Rate
2016	73.6%
2018	52.4%
2020	81.0%

The **Voting Rate of Registered Students** is the percent of registered students who voted on Election Day. We often refer to this as the “yield” rate.

VOTING RATE

Year	Rate
2016	59.3%
2018	41.6%
2020	69.6%

The **Voting Rate** is the percentage of eligible students who voted on Election Day. The voting rate is also the product of the registration and yield rates.

# Looking Closer

## Voting and Registration Rates

	2016	2018	2020	2016-2020 Change (p.p.)
Total Student Enrollment	24,443	23,544	23,794	↓ -650
(Age under 18/Unknown)	-	-	-	-
(IPEDS estimated non-resident aliens)	763	726	606	↓ -156
(FERPA records blocked)	-	-	-	-
(Non-Degree Seeking Students)	535	368	257	↓ -278
Total eligible voters	23,140	22,447	22,926	↓ -213
Number of students who registered	18,659	17,828	19,694	↑ 1,035
Number of students who voted	13,732	9,336	15,953	↑ 2,221
Registration Rate %	81	79	86	↑ 5
Voting Rate of Registered Students %	74	52	81	↑ 7
Voting Rate %	59	42	70	↑ 10

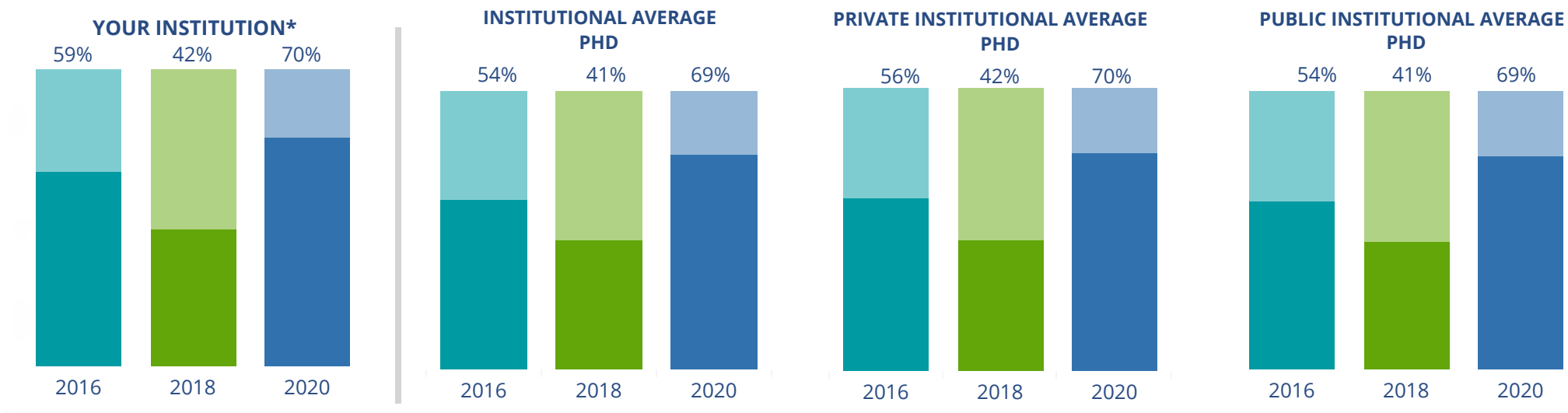
**This page provides the numbers we used to calculate your voting, registration, and yield rates.** The sub-categories under total student enrollment are the adjustments that we make to account for students who are ineligible to vote due to age or citizenship status. We also exclude, when correctly flagged, students who are not pursuing degrees.

We use IPEDS-derived estimates of NRAs when institutions do not submit non-resident alien status data to NSC, or we cannot verify the accuracy of the reported counts. This estimate is given by "IPEDS estimated non-resident aliens" on this page. If you believe the number of international students reported on this report is incorrect, you can manually adjust your institution's voting rates by using our recalculation tool. <https://id-he.tufts.edu/nsive/nsive-recalculation-tool>.

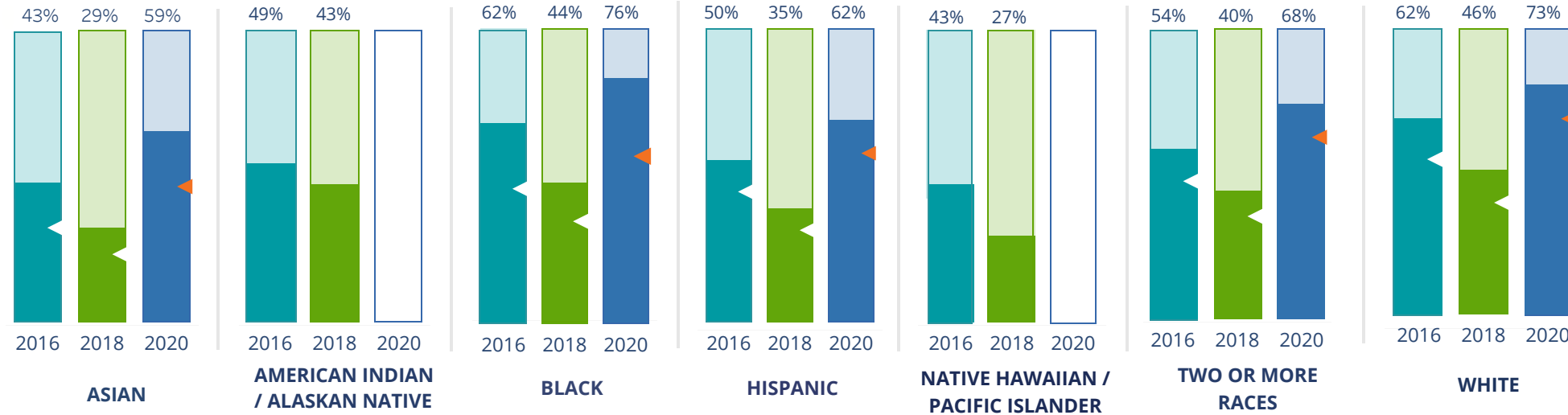
# By Institution Types



These are estimated voting rates of your institution compared to the average voting rates of similar institutions in NSLVE. \*"Your Institution" chart is presented at a different scale.



## By Race / Ethnicity



**These are estimated voting rates for race / ethnicity groups.** These classifications are provided by campuses and are obtained following race reporting procedures\* defined by the National Center for Education Statistics of the Institute of Education Sciences (IES). Please see our FAQ for more detail on why we cannot report national benchmark for some of the demographic groups:

<https://tufts.app.box.com/v/idhe-nsive-report-faq>

If you notice unavailable/missing data in this page, it could mean any of the following for your institution: (i) does not report this data; (ii) did not provide this data in past years; (iii) does not separately submit data for one or more of the demographic groups, or (iv) the data is reported for 10 or fewer students.

\* <https://nces.ed.gov/ipeds/report-your-data/race-ethnicity-collecting-data-for-reporting-purposes>



# Looking Closer

## By Race/Ethnicity

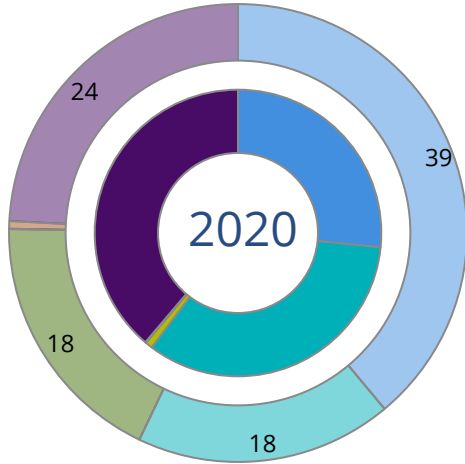
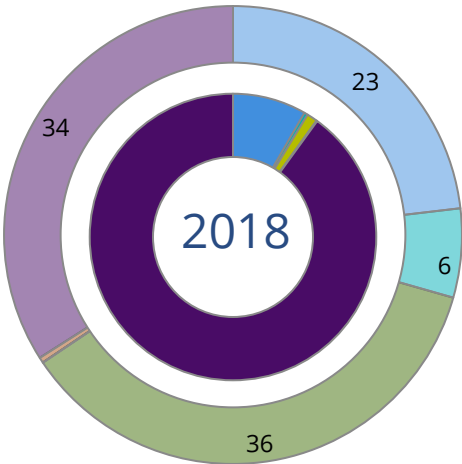
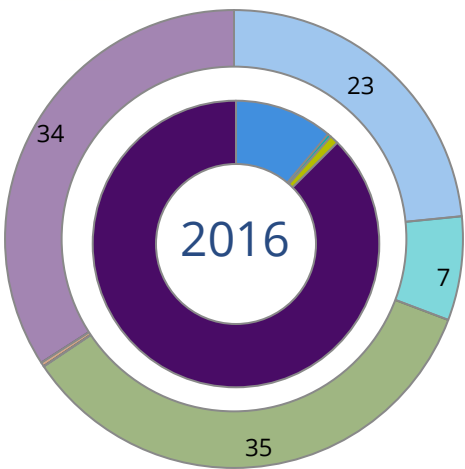
**This page provides the numbers we used to calculate race / ethnicity group voting rates.** We include the counts of students and the change in rates between the two most recent comparable election years. If you notice unavailable/missing data in this page, it could mean any of the following for your institution: (i) does not report this data; (ii) did not provide this data in past years; (iii) does not separately submit data for one or more of the demographic groups, or (iv) the data is reported for 10 or fewer students.

	2016			2018			2020			2016-2020
	Enrolled	Voted	Rate	Enrolled	Voted	Rate	Enrolled	Voted	Rate	Change (p.p)
Asian	999	432	43	774	226	29	317	188	59	↑ 16
American Indian/ Alaska Native	69	34	49	42	18	43	12	-	-	-
Black	6,172	3,808	62	4,544	1,975	43	1,905	1,439	76	↑ 14
Hispanic	1,824	908	50	1,355	478	35	583	363	62	↑ 12
Native Hawaiian/ Pacific Islander	58	25	43	52	14	27	22	-	-	-
2 or More Races	1,513	813	54	1,077	434	40	454	307	68	↑ 14
White	11,510	7,103	62	7,768	3,558	46	2,996	2,178	73	↑ 11
Race Unknown	1,738	609	35	7,547	2,633	35	17,235	11,460	66	↑ 31



# By Voting Method

Not-In-Person Early Vote In-Person Other Provisional Unknown



	2016		2018		2020		2016-2020	
	Voted	Rate	Voted	Rate	Voted	Rate	Change (p.p.)	
Early Vote	50	0	35	0	5,378	34	33	↑
In-Person on Election Day	142	1	110	1	128	1	0	↓
Not-In-Person	1,524	11	774	8	4,237	27	16	↑
Other	–	–	–	–	–	–	–	
Provisional	–	–	–	–	–	–	–	
Voting Method Unknown	12,012	88	8,411	90	6,201	39	-49	↓

These are estimated rates for vote method utilization, the number of students utilizing each method, and the percent of students utilizing each method. Not all U.S. states provide information on vote method; voting method for voter files from these states are classified “Voting Method Unknown.” For a list of these states, see our FAQ. <https://idhe.tufts.edu/nsive/nsive-faq#CampusReports>

# By Age Group

	2016	2018	2020
18-21	54%	32%	69%
22-24	56%	40%	68%
25-29	56%	41%	61%
30-39	61%	50%	64%
40-49	72%	63%	77%
50+	82%	76%	85%

**Voting is habit-forming and young voters will usually continue as voters in subsequent elections.** Also, young voters are more likely to be contacted by campaigns and are visible, and therefore significant, to elected officials. While in the past, we have seen voting rates increase across age groups, in recent cycles, the most significant increases have been among first-time and the youngest voters. Some colleges serve primarily young students, traditionally viewed as students in the 18-21 or 22-24 categories here. Others have much higher numbers of enrolled older undergraduate or graduate students.

# Looking Closer

## By Age Group

Here, we provide the numbers of students in each age category and the voting rates for each group. These are based on the student's age on the day of the election, as calculated by the National Student Clearinghouse using data from student enrollment records.

	2016			2018			2020			2016-2020 Change (p.p)
	Enrolled	Voted	Rate	Enrolled	Voted	Rate	Enrolled	Voted	Rate	
18-21	9,980	5,348	54	9,853	3,110	32	10,387	7,145	69	↑ 15
22-24	4,861	2,730	56	4,645	1,863	40	4,405	2,998	68	↑ 12
25-29	3,742	2,110	56	3,478	1,427	41	3,418	2,097	61	↑ 5
30-39	3,253	1,998	61	3,213	1,614	50	3,331	2,126	64	↑ 2
40-49	1,339	963	72	1,286	804	63	1,276	983	77	↑ 5
50+	708	583	82	684	518	76	707	604	85	↑ 3

# Looking Closer

## By Sex

	2016			2018			2020			2016-2020	
	Enrolled	Voted	Rate	Enrolled	Voted	Rate	Enrolled	Voted	Rate	Change (p.p)	
Female	13,095	8,116	62	9,295	4,224	45	3,715	2,693	72	↑	11
Male	10,787	5,615	52	7,387	2,742	37	3,042	1,979	65	↑	13

**These are estimated voting rates for sex groups and the numbers we used to calculate their voting rates.** These classifications are provided by campuses and are obtained following the reporting procedures defined by the National Center for Education Statistics (NCES) of the Institute of Education Sciences (IES). Presently, NCES requires institutions to report students as “Male” or “Female” only.\*

If you notice missing data in this page, it could mean any of the following for your institution: (i) does not report this data; (ii) did not provide this data in past years; (iii) does not separately submit data for one or more of the demographic groups, or (iv) the data is reported for 10 or fewer students.

\*<https://surveys.nces.ed.gov/ipeds/public/survey-materials/faq?faqid=11>

# Looking Closer

## By Education Level / Undergraduate Class Year

	2016			2018			2020			2016-2020	
	Enrolled	Voted	Rate (%)	Enrolled	Voted	Rate (%)	Enrolled	Voted	Rate (%)	Change (p.p)	
EDUCATION LEVEL											
Undergraduate	19,465	10,984	56	18,603	6,971	37	18,984	12,823	68	↑	11
Graduate	4,417	2,747	62	4,458	2,296	52	4,388	3,009	69	↑	6
Class Unknown	-	-	-	98	69	70	152	121	80		-
CLASS YEAR											
First Year	-	-	-	-	-	-	-	-	-		-
Second Year	-	-	-	-	-	-	-	-	-		-
Upper Level	-	-	-	-	-	-	-	-	-		-
ENROLLMENT STATUS											
Full-time	16,943	9,304	55	17,005	6,120	36	16,709	11,238	67	↑	12
Part-time	6,940	4,428	64	6,154	3,216	52	6,815	4,715	69	↑	5

These are estimated voting rates by Education Level (undergraduate/graduate), Class Year, and Enrollment Status (full-time/part-time), and the numbers we used to calculate these rates.

If you notice missing data in this page, it could mean any of the following for your institution: (i) does not report this data; (ii) did not provide this data in past years; (iii) does not separately submit data for one or more of the demographic groups, or (iv) the data is reported for 10 or fewer students.

## By Field of Study

FIELDS	2016			2018			2020			2016-2020	
	Enrolled	Voted	Rate	Enrolled	Voted	Rate	Enrolled	Voted	Rate	Change (p.p)	
Area, Ethnic, Cultural, and Gender Studies	57	40	70	50	26	52	42	30	71	↑	1
Biological and Biomedical Sciences	1,454	827	57	1,441	503	35	1,382	914	66	↑	9
Business, Management, and Marketing	3,487	1,890	54	3,321	1,204	36	3,032	1,946	64	↑	10
Communication and Journalism	27	18	67	21	13	62	17	13	76	↑	10
Computer and Information Sciences	809	415	51	878	325	37	1,634	1,000	61	↑	10
Education	2,613	1,611	62	2,169	1,079	50	2,418	1,808	75	↑	13
Engineering and Engineering Technologies	3,242	1,663	51	3,142	1,050	33	3,109	1,913	62	↑	10

**These are estimated voting rates by field of study, and the numbers we used to calculate the field of study rates.** For an explanation of CIP codes, please see our FAQ.\* There are roughly 8,000 fields of study among U.S. colleges and universities, so we provide rates for condensed categories.

\*<https://tufts.app.box.com/v/idhe-nslve-report-faq>

## By Field of Study

FIELDS	2016			2018			2020			2016-2020 Change (p.p)
	Enrolled	Voted	Rate	Enrolled	Voted	Rate	Enrolled	Voted	Rate	
English Language and Literature	1,377	824	60	1,290	592	46	1,250	892	71	↑ 12
Foreign Languages, Literatures, and Lingui..	70	48	69	54	21	39	67	56	84	↑ 15
Health Professions	3,511	2,151	61	3,367	1,373	41	3,439	2,411	70	↑ 9
History	260	180	69	236	125	53	238	179	75	↑ 6
Liberal Arts and Sciences, and Humanities	1,015	621	61	767	435	57	425	338	80	↑ 18
Mathematics and Statistics	168	98	58	145	61	42	149	91	61	↑ 3
Multi/Interdisciplinary Studies	1,021	645	63	1,654	628	38	1,080	730	68	↑ 4
Parks, Recreation, Leisure, and Fitness Stu..	260	136	52	483	142	29	636	447	70	↑ 18
Philosophy and Religious Studies	32	21	66	34	15	44	26	20	77	↑ 11
Physical Sciences	364	175	48	344	126	37	374	237	63	↑ 15
Psychology	1,320	785	59	1,281	508	40	1,523	987	65	↑ 5
Public Administration and Social Service P..	183	134	73	164	106	65	179	149	83	↑ 10
Social Sciences	1,907	1,039	54	1,595	652	41	1,606	1,116	69	↑ 15



# By Field of Study

FIELDS	2016			2018			2020			2016-2020 Change (p.p)
	Enrolled	Voted	Rate	Enrolled	Voted	Rate	Enrolled	Voted	Rate	
Visual and Performing Arts	659	381	58	626	285	46	614	432	70	↑ 13
Unknown	47	30	64	97	67	69	163	130	80	↑ 16

# About This Report

## Thank you for participating in the National Study of Learning, Voting, and Engagement.

Since NSLVE's launch in 2013, nearly 1,200 colleges and universities have signed up to receive their voting rates for the 2012, 2014, 2016, 2018, and 2020 federal elections.

Along with others, your institution's participation in this study has allowed us to build a robust database of over 50 million college student records, about 10 million for each election year, that serve as a foundation for innovative research on college student political learning and engagement in democracy.

NSLVE is a signature initiative of the Institute for Democracy and Higher Education (IDHE) at Tufts University's Jonathan M. Tisch College of Civic Life. The mission of IDHE is to shift college and university priorities and culture to advance political learning, agency, and equity. We achieve our mission through research, resource development, technical assistance, and advocacy.

### About the Data

The voter registration and voting rates in this report reflect the percentage of your institution's students who were eligible to vote and who actually voted in the 2016, 2018, and 2020 elections.

These results are based on enrollment records your institution submitted to the National Student Clearinghouse (NSC) and publicly available voting files collected by L2 Political.

Enrollment lists are adjusted by deducting students under age 18 (at the time of the election), people identified as non-degree seeking and those identified by campuses as "nonresident aliens" (NRAs) (the federal government's category for mostly international students). Unfortunately, not all campuses report NRAs to NSC. For those campuses, we use IPEDS to calculate the number of NRA students on each campus and adjust NSC enrollment numbers to estimate the number of students to remove. We also quality check NRA removals by verifying that there is little to no discrepancy between the number of international students reported by the campus to IPEDS and to NSC. We cannot adjust subgroup analyses absent identification of NRAs verified by the process above. We welcome closer partnerships with individual colleges and universities to provide more accurate rates. For more on the data and the matching process, see our FAQ on Campus Reports.

Old Dominion University

Thank you for the work you do to improve your students' political learning and engagement. We hope that you find your NSLVE report useful. For up-to-date news on NSLVE data, resources, and to sign up for our newsletter visit: <https://idhe.tufts.edu>.

References: IDHE encourages report recipients to share this report as broadly as possible, including posting it on the college or university's website. When doing so, please use the following citation: Institute for Democracy & Higher Education: National Study of Learning, Voting and Engagement. (2021). 2016, 2018, and 2020 report for \_\_\_\_\_ [name of institution]. Medford, MA.



Barnum Hall  
163 Packard Ave.  
Medford, MA 02155

tischcollege@tufts.edu  
617.627.3453



Institute for Democracy & Higher Education:  
National Study of Learning, Voting, and Engagement  
Barnum Hall, Medford, MA 02155

Follow Us on Twitter: @TuftsIDHE  
NSLVE@tufts.edu  
617.627.0620