



October 2021

# **Student Voting Rates for Oklahoma State University-Main Campus**

2020 NSLVE Campus Report



Jonathan M. Tisch  
College of Civic Life



INSTITUTE FOR DEMOCRACY  
& HIGHER EDUCATION

**October 2021**

**Dear Colleagues:**

We are pleased to send this tailored report containing your students' voting rates for 2020. This report contains three years of relevant topline data: 2016, 2018, and 2020. As always, we disaggregate the data so you can better identify and address gaps in participation.

College and university students participated in record-breaking numbers in the 2020 election. In 2016, the Average Institutional Voting Rate was 53%. This year, it jumped to 66%. We encourage you to review Democracy Counts 2020, our most recent national report.

As in past years, we urge you to share this report widely and strategically, particularly with faculty who, in 2020, were often the most consistent communicators with students about ever-changing voting conditions and deadlines. We also urge you to review our recommendations for engaging elections to cultivate a robust and healthy campus climate for political engagement, discourse, equity, and participation: Election Imperatives (2019) and the more recent Election Imperatives: A Time of Physical Distancing and Social Action. Since "pervasive political discussions" and attentiveness to the campus culture around speech and academic freedom are among our top recommendations, we direct you to our discussion guides on talking about your NSLVE report, on free speech and inclusion, and on hot topics, our Making Sense of ... guides.

Finally, we always encourage you to work with us. Help us help you get better data by reaching out. Email [IDHE@Tufts.edu](mailto:IDHE@Tufts.edu) for more information. And as always, watch your inbox for our periodic newsletter, IDHE Update, for announcements about upcoming releases and new resources.

Congratulations on engaging your students in the 2020 election. Remember, student political learning is a year-round objective. Elections may be episodic, but student political engagement should not be.

All the Best,  
IDHE Team



**(Top Row from left) Duy Trinh, Program Administrator; Adam Gismondi, Director of Impact; Dave Brinker, Senior Researcher;**  
**(Bottom Row from left) Nancy Thomas, Director; Norma López, Postdoctoral Scholar; Prabhat Gautam, Data Manager.**

We also want to acknowledge and thank **Syed Golam Mohaimen, M.S. student in Data Science at Tufts University** for his contributions toward the creation of these reports.

# In This Report

This report presents data on student voter participation rates for your campus. The topline counts on page 5 tells you how many students voted, but we encourage you to look carefully at the data on subsequent pages to learn who voted. Data are presented in the form of vessel charts, overlapping donut charts, and tables.



	2014			2018			2014-2018
	Enrolled	Voted	Rate (%)	Enrolled	Voted	Rate (%)	Change (p.p.)
Asian	-	-	-	-	-	-	-
American Indian/ Alaska Native	-	-	-	-	-	-	-
Black	-	-	-	-	-	-	-
Hispanic	-	-	-	-	-	-	-

## Tables

The tables show, on the left-side columns, the numbers of students and the rates from 2016, 2018, and 2020. On the left-side, percentage point (p.p.) changes between 2016 and 2020. A red down arrow indicates a decrease, a green up arrow indicates an increase, and a yellow arrow pointing to the right indicates no change. "-" in these tables indicates that the data is unavailable/missing, or is available for 10 or less students.



# Voting, Registration and Yield Rates

## YOUR INSTITUTION

57.1%

2020 Voting Rate

+13.3

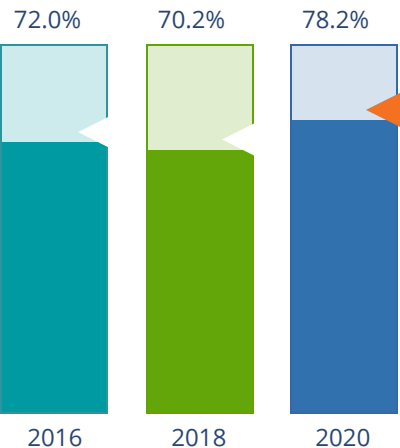
Change From 2016

## ALL INSTITUTIONS

66%

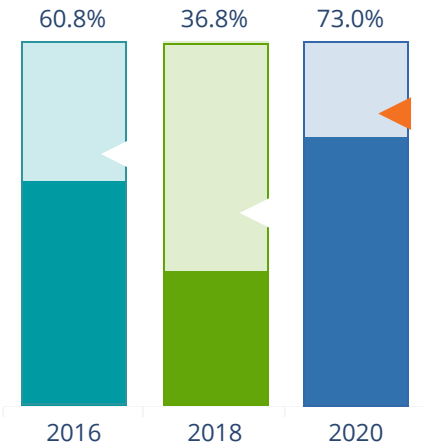
2020 Voting Rate

## REGISTRATION RATE



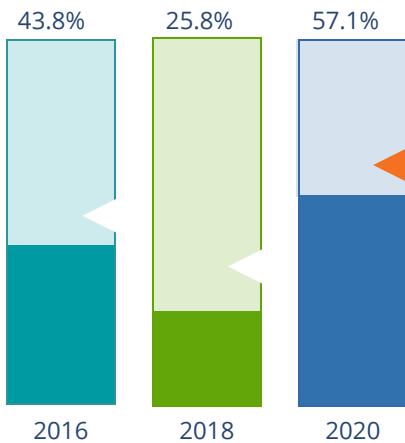
The **Registration Rate** is the percent of your voting-eligible students who registered to vote.

## VOTING RATE OF REGISTERED STUDENTS



The **Voting Rate of Registered Students** is the percent of registered students who voted on Election Day. We often refer to this as the “yield” rate.

## VOTING RATE



The **Voting Rate** is the percentage of eligible students who voted on Election Day. The voting rate is also the product of the registration and yield rates.

# Looking Closer

## Voting and Registration Rates

	2016	2018	2020	2016-2020 Change (p.p.)
Total Student Enrollment	26,018	24,908	24,666	↓ -1,352
(Age under 18/Unknown)	–	–	–	–
(IPEDS estimated non-resident aliens)	1,975	1,683	1,297	↓ -678
(FERPA records blocked)	36	19	29	↓ -7
(Non-Degree Seeking Students)	590	478	520	↓ -70
Total eligible voters	23,417	22,728	22,819	↓ -598
Number of students who registered	16,856	15,960	17,850	↑ 994
Number of students who voted	10,251	5,867	13,030	↑ 2,779
Registration Rate %	72	70	78	↑ 6
Voting Rate of Registered Students %	61	37	73	↑ 12
Voting Rate %	44	26	57	↑ 13

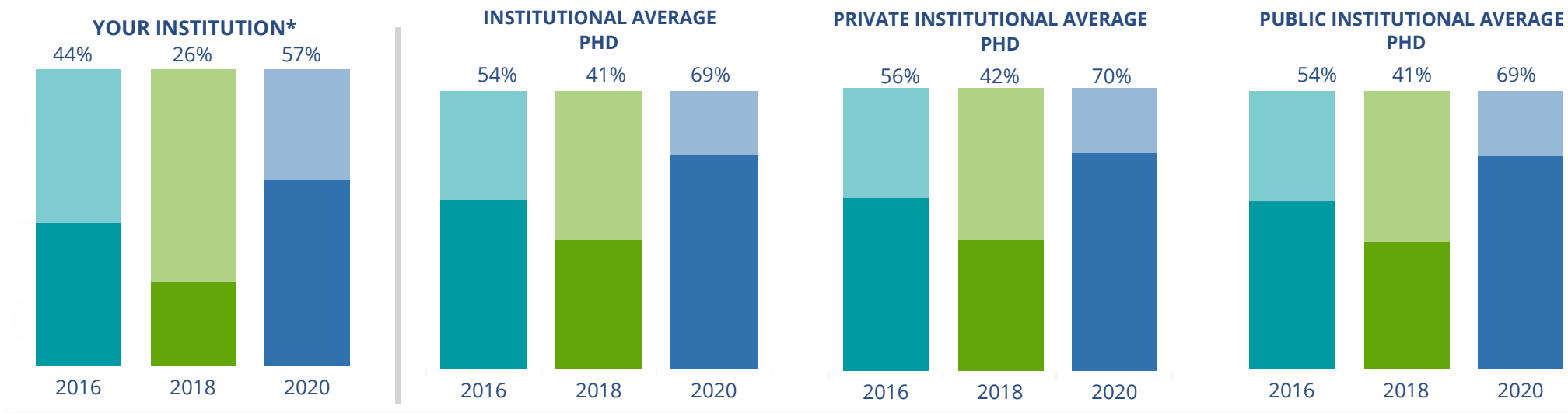
**This page provides the numbers we used to calculate your voting, registration, and yield rates.** The sub-categories under total student enrollment are the adjustments that we make to account for students who are ineligible to vote due to age or citizenship status. We also exclude, when correctly flagged, students who are not pursuing degrees.

We use IPEDS-derived estimates of NRAs when institutions do not submit non-resident alien status data to NSC, or we cannot verify the accuracy of the reported counts. This estimate is given by "IPEDS estimated non-resident aliens" on this page. If you believe the number of international students reported on this report is incorrect, you can manually adjust your institution's voting rates by using our recalculation tool. <https://id-he.tufts.edu/nsive/nsive-recalculation-tool>.

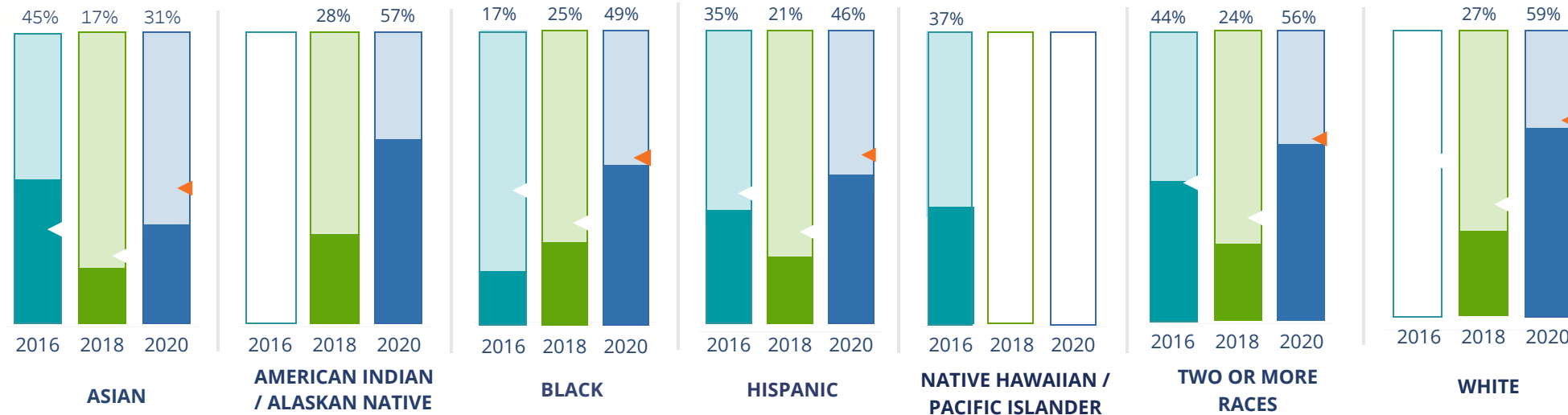
# By Institution Types



These are estimated voting rates of your institution compared to the average voting rates of similar institutions in NSLVE. \*"Your Institution" chart is presented at a different scale.



## By Race / Ethnicity



**These are estimated voting rates for race / ethnicity groups.** These classifications are provided by campuses and are obtained following race reporting procedures\* defined by the National Center for Education Statistics of the Institute of Education Sciences (IES). Please see our FAQ for more detail on why we cannot report national benchmark for some of the demographic groups:

<https://tufts.app.box.com/v/idhe-nsive-report-faq>

If you notice unavailable/missing data in this page, it could mean any of the following for your institution: (i) does not report this data; (ii) did not provide this data in past years; (iii) does not separately submit data for one or more of the demographic groups, or (iv) the data is reported for 10 or fewer students.

\* <https://nces.ed.gov/ipeds/report-your-data/race-ethnicity-collecting-data-for-reporting-purposes>



# Looking Closer

## By Race/Ethnicity

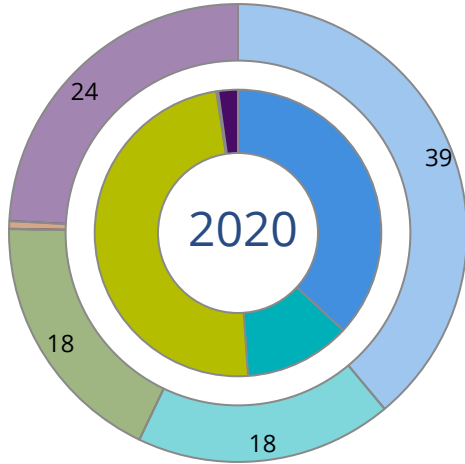
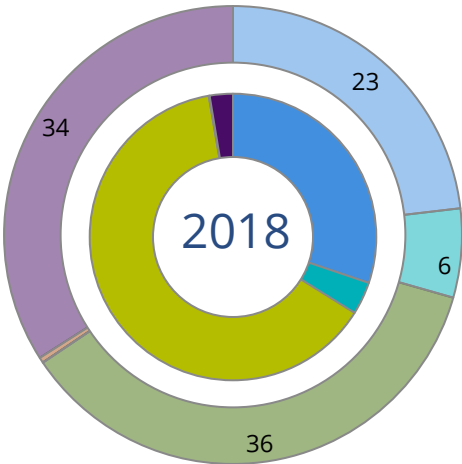
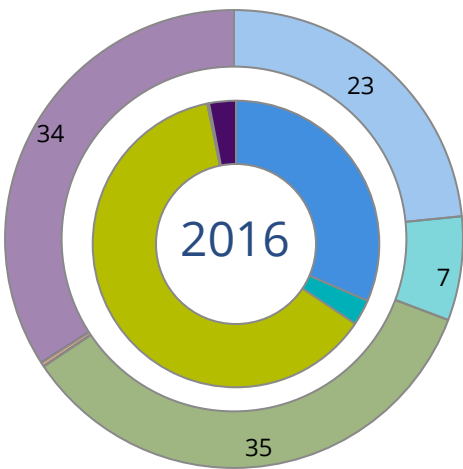
This page provides the numbers we used to calculate race / ethnicity group voting rates. We include the counts of students and the change in rates between the two most recent comparable election years. If you notice unavailable/missing data in this page, it could mean any of the following for your institution: (i) does not report this data; (ii) did not provide this data in past years; (iii) does not separately submit data for one or more of the demographic groups, or (iv) the data is reported for 10 or fewer students.

	2016			2018			2020			2016-2020 Change (p.p)
	Enrolled	Voted	Rate	Enrolled	Voted	Rate	Enrolled	Voted	Rate	
Asian	1,078	485	45	476	82	17	653	202	31	↓ -14
American Indian/ Alaska Native	-	-	-	1,014	284	28	980	562	57	-
Black	709	120	17	1,029	261	25	1,011	496	49	↑ 32
Hispanic	1,696	596	35	1,812	377	21	1,940	892	46	↑ 11
Native Hawaiian/ Pacific Islander	1,178	434	37	26	-	-	26	-	-	-
2 or More Races	2,157	946	44	2,182	524	24	2,253	1,257	56	↑ 12
White	34	-	-	16,133	4,310	27	16,175	9,588	59	-
Race Unknown	18,488	7,661	41	56	25	45	1,032	23	2	↓ -39



# By Voting Method

Not-In-Person Early Vote In-Person Other Provisional Unknown



	2016		2018		2020		2016-2020	
	Voted	Rate	Voted	Rate	Voted	Rate	Change (p.p.)	
Early Vote	296	3	217	4	1,559	12	9	↑
In-Person on Election Day	6,397	62	3,720	63	6,349	49	-14	↓
Not-In-Person	3,224	32	1,774	30	4,809	37	5	↑
Other	13	0	-	-	25	0	0	→
Provisional	-	-	-	-	-	-	-	
Voting Method Unknown	321	3	147	3	287	2	-1	↓

These are estimated rates for vote method utilization, the number of students utilizing each method, and the percent of students utilizing each method. Not all U.S. states provide information on vote method; voting method for voter files from these states are classified "Voting Method Unknown." For a list of these states, see our FAQ. <https://idhe.tufts.edu/nsive/nsive-faq#CampusReports>

# By Age Group

	2016	2018	2020
18-21	38%	19%	54%
22-24	40%	25%	53%
25-29	40%	36%	47%
30-39	51%	50%	54%
40-49	67%	62%	68%
50+	81%	76%	81%

**Voting is habit-forming and young voters will usually continue as voters in subsequent elections.** Also, young voters are more likely to be contacted by campaigns and are visible, and therefore significant, to elected officials. While in the past, we have seen voting rates increase across age groups, in recent cycles, the most significant increases have been among first-time and the youngest voters. Some colleges serve primarily young students, traditionally viewed as students in the 18-21 or 22-24 categories here. Others have much higher numbers of enrolled older undergraduate or graduate students.

# Looking Closer

## By Age Group

Here, we provide the numbers of students in each age category and the voting rates for each group. These are based on the student's age on the day of the election, as calculated by the National Student Clearinghouse using data from student enrollment records.

	2016			2018			2020			2016-2020 Change (p.p)
	Enrolled	Voted	Rate	Enrolled	Voted	Rate	Enrolled	Voted	Rate	
18-21	14,421	5,417	38	13,793	2,672	19	14,247	7,739	54	↑ 17
22-24	5,517	2,182	40	4,765	1,215	25	4,892	2,617	53	↑ 14
25-29	2,562	1,014	40	1,834	667	36	2,190	1,023	47	↑ 7
30-39	1,862	941	51	1,428	713	50	1,753	941	54	↑ 3
40-49	660	441	67	619	381	62	672	455	68	↑ 1
50+	318	256	81	289	219	76	316	255	81	↑ 0

# Looking Closer

## By Sex

	2016			2018			2020			2016-2020	
	Enrolled	Voted	Rate	Enrolled	Voted	Rate	Enrolled	Voted	Rate	Change (p.p)	
Female	12,384	5,460	44	11,533	3,159	27	12,280	7,193	59	↑	14
Male	12,948	4,790	37	11,192	2,707	24	11,790	5,837	50	↑	13

**These are estimated voting rates for sex groups and the numbers we used to calculate their voting rates.** These classifications are provided by campuses and are obtained following the reporting procedures defined by the National Center for Education Statistics (NCES) of the Institute of Education Sciences (IES). Presently, NCES requires institutions to report students as “Male” or “Female” only.\*

If you notice missing data in this page, it could mean any of the following for your institution: (i) does not report this data; (ii) did not provide this data in past years; (iii) does not separately submit data for one or more of the demographic groups, or (iv) the data is reported for 10 or fewer students.

\*<https://surveys.nces.ed.gov/ipeds/public/survey-materials/faq?faqid=11>

# Looking Closer

## By Education Level / Undergraduate Class Year

	2016			2018			2020			2016-2020	
	Enrolled	Voted	Rate (%)	Enrolled	Voted	Rate (%)	Enrolled	Voted	Rate (%)	Change (p.p)	
EDUCATION LEVEL											
Undergraduate	20,816	8,308	40	19,345	4,341	22	19,599	10,612	54	↑	14
Graduate	4,521	1,942	43	3,383	1,526	45	4,470	2,417	54	↑	11
Class Unknown	-	-	-	-	-	-	-	-	-	-	-
CLASS YEAR											
First Year	4,822	34	1,621	4,856	15	749	4,769	49	2,319	↑	15
Second Year	4,739	37	1,773	4,121	19	766	4,267	54	2,294	↑	16
Upper Level	11,284	44	4,922	10,342	27	2,811	10,447	57	5,921	↑	13
ENROLLMENT STATUS											
Full-time	21,201	8,218	39	20,166	4,662	23	21,293	11,297	53	↑	14
Part-time	4,139	2,033	49	2,562	1,205	47	2,777	1,733	62	↑	13

These are estimated voting rates by Education Level (undergraduate/graduate), Class Year, and Enrollment Status (full-time/part-time), and the numbers we used to calculate these rates.

If you notice missing data in this page, it could mean any of the following for your institution: (i) does not report this data; (ii) did not provide this data in past years; (iii) does not separately submit data for one or more of the demographic groups, or (iv) the data is reported for 10 or fewer students.

## By Field of Study

FIELDS	2016			2018			2020			2016-2020 RateChange (p.p)
	Enrolled	Voted	Rate	Enrolled	Voted	Rate	Enrolled	Voted	Rate	
Architecture	234	98	42	241	62	26	247	143	58	↑ 16
Area, Ethnic, Cultural, and Gender Studies	24	19	79	21	13	62	20	16	80	↑ 1
Biological and Biomedical Sciences	1,866	757	41	1,872	441	24	1,907	1,051	55	↑ 15
Business, Management, and Marketing	4,975	1,887	38	4,459	1,058	24	4,790	2,601	54	↑ 16
Communication and Journalism	588	283	48	457	146	32	438	287	66	↑ 17
Computer and Information Sciences	916	321	35	613	171	28	750	358	48	↑ 13
Education	1,586	887	56	1,376	585	43	1,332	854	64	↑ 8

**These are estimated voting rates by field of study, and the numbers we used to calculate the field of study rates.** For an explanation of CIP codes, please see our FAQ.\* There are roughly 8,000 fields of study among U.S. colleges and universities, so we provide rates for condensed categories.

\*<https://tufts.app.box.com/v/idhe-nslve-report-faq>

## By Field of Study

FIELDS	2016			2018			2020			2016-2020 Change (p.p)
	Enrolled	Voted	Rate	Enrolled	Voted	Rate	Enrolled	Voted	Rate	
Engineering and Engineering Technologies	4,081	1,527	37	3,392	752	22	3,532	1,697	48	↑ 11
English Language and Literature	332	162	49	267	124	46	245	158	64	↑ 16
Family and Consumer/Human Sciences	1,660	678	41	1,369	295	22	1,183	699	59	↑ 18
Foreign Languages, Literatures, and Lingui..	46	27	59	15	–	–	20	14	70	↑ 11
Health Professions	1,200	571	48	1,249	382	31	1,409	820	58	↑ 11
History	121	82	68	122	58	48	131	83	63	↓ -4
Law Enforcement, Firefighting, and Protec..	387	132	34	255	77	30	410	251	61	↑ 27
Liberal Arts and Sciences, and Humanities	1,996	649	33	1,742	321	18	1,690	783	46	↑ 14
Mathematics and Statistics	232	75	32	179	57	32	233	119	51	↑ 19
Multi/Interdisciplinary Studies	30	–	–	34	18	53	61	36	59	–
Natural Resources and Conservation	108	57	53	85	34	40	103	64	62	↑ 9
Parks, Recreation, Leisure, and Fitness Stu..	270	89	33	499	82	16	661	326	49	↑ 16
Philosophy and Religious Studies	47	14	30	52	17	33	52	31	60	↑ 30
Physical Sciences	409	111	27	246	75	30	311	127	41	↑ 14



## By Field of Study

FIELDS	2016			2018			2020			2016-2020	
	Enrolled	Voted	Rate	Enrolled	Voted	Rate	Enrolled	Voted	Rate	Change (p.p)	
Psychology	853	365	43	862	244	28	1,103	617	56	↑	13
Public Administration and Social Service Professions	-	-	-	-	-	-	-	-	-	-	-
Social Sciences	550	296	54	532	210	39	500	307	61	↑	8
Visual and Performing Arts	391	171	44	408	104	25	420	245	58	↑	15
Unknown	22	-	-	19	-	-	34	14	41	-	-

# About This Report

## Thank you for participating in the National Study of Learning, Voting, and Engagement.

Since NSLVE's launch in 2013, nearly 1,200 colleges and universities have signed up to receive their voting rates for the 2012, 2014, 2016, 2018, and 2020 federal elections.

Along with others, your institution's participation in this study has allowed us to build a robust database of over 50 million college student records, about 10 million for each election year, that serve as a foundation for innovative research on college student political learning and engagement in democracy.

NSLVE is a signature initiative of the Institute for Democracy and Higher Education (IDHE) at Tufts University's Jonathan M. Tisch College of Civic Life. The mission of IDHE is to shift college and university priorities and culture to advance political learning, agency, and equity. We achieve our mission through research, resource development, technical assistance, and advocacy.

### About the Data

The voter registration and voting rates in this report reflect the percentage of your institution's students who were eligible to vote and who actually voted in the 2016, 2018, and 2020 elections.

These results are based on enrollment records your institution submitted to the National Student Clearinghouse (NSC) and publicly available voting files collected by L2 Political.

Enrollment lists are adjusted by deducting students under age 18 (at the time of the election), people identified as non-degree seeking and those identified by campuses as "nonresident aliens" (NRAs) (the federal government's category for mostly international students). Unfortunately, not all campuses report NRAs to NSC. For those campuses, we use IPEDS to calculate the number of NRA students on each campus and adjust NSC enrollment numbers to estimate the number of students to remove. We also quality check NRA removals by verifying that there is little to no discrepancy between the number of international students reported by the campus to IPEDS and to NSC. We cannot adjust subgroup analyses absent identification of NRAs verified by the process above. We welcome closer partnerships with individual colleges and universities to provide more accurate rates. For more on the data and the matching process, see our FAQ on Campus Reports.

Oklahoma State University-Main Campus

Thank you for the work you do to improve your students' political learning and engagement. We hope that you find your NSLVE report useful. For up-to-date news on NSLVE data, resources, and to sign up for our newsletter visit: <https://idhe.tufts.edu>.

References: IDHE encourages report recipients to share this report as broadly as possible, including posting it on the college or university's website. When doing so, please use the following citation: Institute for Democracy & Higher Education: National Study of Learning, Voting and Engagement. (2021). 2016, 2018, and 2020 report for \_\_\_\_\_ [name of institution]. Medford, MA.



Barnum Hall  
163 Packard Ave.  
Medford, MA 02155

tischcollege@tufts.edu  
617.627.3453



Institute for Democracy & Higher Education:  
National Study of Learning, Voting, and Engagement  
Barnum Hall, Medford, MA 02155

Follow Us on Twitter: @TuftsIDHE  
NSLVE@tufts.edu  
617.627.0620