



October 2021

# **Student Voting Rates for California State University-Sacramento**

2020 NSLVE Campus Report



Jonathan M. Tisch  
College of Civic Life



INSTITUTE FOR DEMOCRACY  
& HIGHER EDUCATION

**October 2021**

**Dear Colleagues:**

We are pleased to send this tailored report containing your students' voting rates for 2020. This report contains three years of relevant topline data: 2016, 2018, and 2020. As always, we disaggregate the data so you can better identify and address gaps in participation.

College and university students participated in record-breaking numbers in the 2020 election. In 2016, the Average Institutional Voting Rate was 53%. This year, it jumped to 66%. We encourage you to review Democracy Counts 2020, our most recent national report.

As in past years, we urge you to share this report widely and strategically, particularly with faculty who, in 2020, were often the most consistent communicators with students about ever-changing voting conditions and deadlines. We also urge you to review our recommendations for engaging elections to cultivate a robust and healthy campus climate for political engagement, discourse, equity, and participation: Election Imperatives (2019) and the more recent Election Imperatives: A Time of Physical Distancing and Social Action. Since "pervasive political discussions" and attentiveness to the campus culture around speech and academic freedom are among our top recommendations, we direct you to our discussion guides on talking about your NSLVE report, on free speech and inclusion, and on hot topics, our Making Sense of ... guides.

Finally, we always encourage you to work with us. Help us help you get better data by reaching out. Email [IDHE@Tufts.edu](mailto:IDHE@Tufts.edu) for more information. And as always, watch your inbox for our periodic newsletter, IDHE Update, for announcements about upcoming releases and new resources.

Congratulations on engaging your students in the 2020 election. Remember, student political learning is a year-round objective. Elections may be episodic, but student political engagement should not be.

All the Best,  
IDHE Team



**(Top Row from left) Duy Trinh, Program Administrator; Adam Gismondi, Director of Impact; Dave Brinker, Senior Researcher;**  
**(Bottom Row from left) Nancy Thomas, Director; Norma López, Postdoctoral Scholar; Prabhat Gautam, Data Manager.**

We also want to acknowledge and thank **Syed Golam Mohaimen, M.S. student in Data Science at Tufts University** for his contributions toward the creation of these reports.

# In This Report

This report presents data on student voter participation rates for your campus. The topline counts on page 5 tells you how many students voted, but we encourage you to look carefully at the data on subsequent pages to learn who voted. Data are presented in the form of vessel charts, overlapping donut charts, and tables.



	2014			2018			2014-2018 Change (p.p.)
	Enrolled	Voted	Rate (%)	Enrolled	Voted	Rate (%)	
Asian	-	-	-	-	-	-	-
American Indian/ Alaska Native	-	-	-	-	-	-	-
Black	-	-	-	-	-	-	-
Hispanic	-	-	-	-	-	-	-

## Tables

The tables show, on the left-side columns, the numbers of students and the rates from 2016, 2018, and 2020. On the left-side, percentage point (p.p.) changes between 2016 and 2020. A red down arrow indicates a decrease, a green up arrow indicates an increase, and a yellow arrow pointing to the right indicates no change. "-" in these tables indicates that the data is unavailable/missing, or is available for 10 or less students.



# Voting, Registration and Yield Rates

YOUR INSTITUTION

71.0%

2020 Voting Rate

+21.6

Change From 2016

ALL INSTITUTIONS

66%

2020 Voting Rate

REGISTRATION RATE

Year	Rate
2016	76.3%
2018	77.1%
2020	85.7%

The **Registration Rate** is the percent of your voting-eligible students who registered to vote.

VOTING RATE OF REGISTERED STUDENTS

Year	Rate
2016	64.7%
2018	56.8%
2020	82.8%

The **Voting Rate of Registered Students** is the percent of registered students who voted on Election Day. We often refer to this as the “yield” rate.

VOTING RATE

Year	Rate
2016	49.4%
2018	43.8%
2020	71.0%

The **Voting Rate** is the percentage of eligible students who voted on Election Day. The voting rate is also the product of the registration and yield rates.

# Looking Closer

## Voting and Registration Rates

	2016	2018	2020	2016-2020 Change (p.p.)
Total Student Enrollment	30,908	30,985	31,454	↑ 546
(Age under 18/Unknown)	–	–	–	–
(IPEDS estimated non-resident aliens)	1,035	1,236	1,249	↑ 214
(FERPA records blocked)	91	77	63	↓ -28
(Non-Degree Seeking Students)	388	246	412	↑ 24
Total eligible voters	29,390	29,421	29,728	↑ 338
Number of students who registered	22,432	22,691	25,481	↑ 3,049
Number of students who voted	14,513	12,886	21,111	↑ 6,598
Registration Rate %	76	77	86	↑ 9
Voting Rate of Registered Students %	65	57	83	↑ 18
Voting Rate %	49	44	71	↑ 22

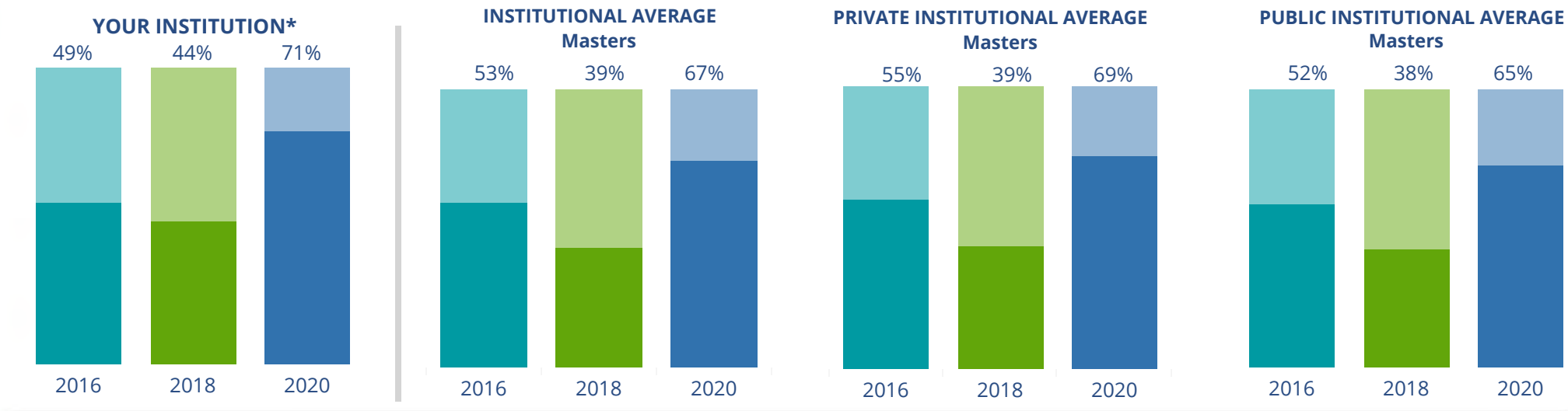
**This page provides the numbers we used to calculate your voting, registration, and yield rates.** The sub-categories under total student enrollment are the adjustments that we make to account for students who are ineligible to vote due to age or citizenship status. We also exclude, when correctly flagged, students who are not pursuing degrees.

We use IPEDS-derived estimates of NRAs when institutions do not submit non-resident alien status data to NSC, or we cannot verify the accuracy of the reported counts. This estimate is given by "IPEDS estimated non-resident aliens" on this page. If you believe the number of international students reported on this report is incorrect, you can manually adjust your institution's voting rates by using our recalculation tool. <https://id-he.tufts.edu/nsive/nsive-recalculation-tool>.

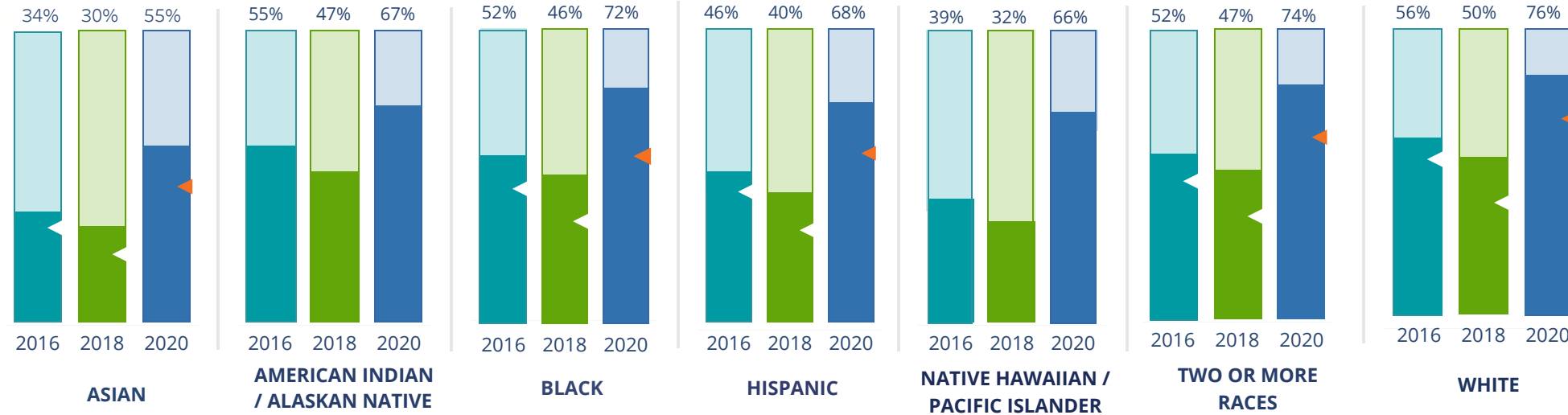
# By Institution Types



These are estimated voting rates of your institution compared to the average voting rates of similar institutions in NSLVE. \*"Your Institution" chart is presented at a different scale.



## By Race / Ethnicity



**These are estimated voting rates for race / ethnicity groups.** These classifications are provided by campuses and are obtained following race reporting procedures\* defined by the National Center for Education Statistics of the Institute of Education Sciences (IES). Please see our FAQ for more detail on why we cannot report national benchmark for some of the demographic groups:

<https://tufts.app.box.com/v/idhe-nsive-report-faq>

If you notice unavailable/missing data in this page, it could mean any of the following for your institution: (i) does not report this data; (ii) did not provide this data in past years; (iii) does not separately submit data for one or more of the demographic groups, or (iv) the data is reported for 10 or fewer students.

\* <https://nces.ed.gov/ipeds/report-your-data/race-ethnicity-collecting-data-for-reporting-purposes>



# Looking Closer

## By Race/Ethnicity

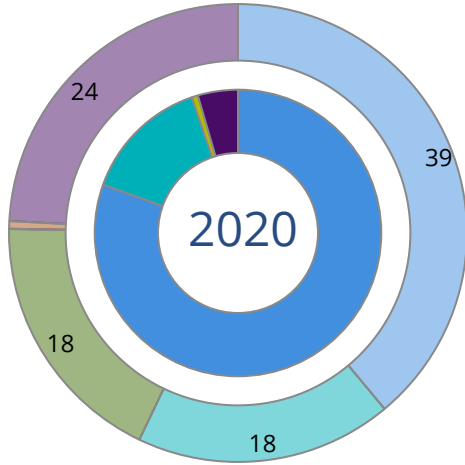
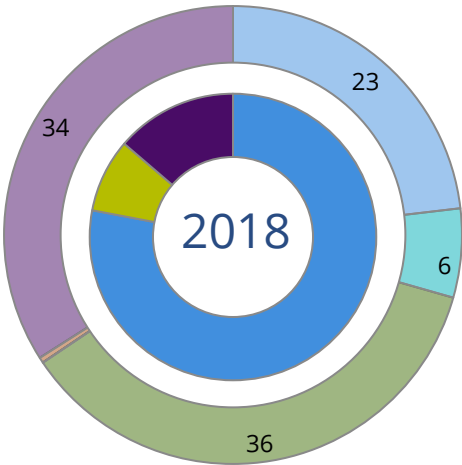
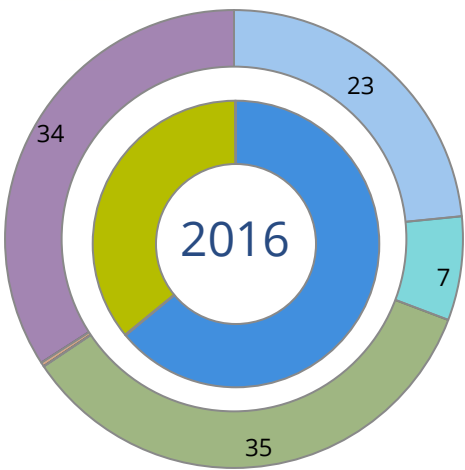
**This page provides the numbers we used to calculate race / ethnicity group voting rates.** We include the counts of students and the change in rates between the two most recent comparable election years. If you notice unavailable/missing data in this page, it could mean any of the following for your institution: (i) does not report this data; (ii) did not provide this data in past years; (iii) does not separately submit data for one or more of the demographic groups, or (iv) the data is reported for 10 or fewer students.

	2016			2018			2020			2016-2020
	Enrolled	Voted	Rate	Enrolled	Voted	Rate	Enrolled	Voted	Rate	Change (p.p)
Asian	6,377	2,176	34	6,295	1,878	30	6,355	3,475	55	↑ 21
American Indian/ Alaska Native	207	113	55	211	99	47	196	132	67	↑ 13
Black	2,113	1,090	52	2,213	1,014	46	2,362	1,706	72	↑ 21
Hispanic	8,003	3,703	46	8,557	3,417	40	9,430	6,395	68	↑ 22
Native Hawaiian/ Pacific Islander	476	184	39	438	139	32	468	307	66	↑ 27
2 or More Races	2,803	1,452	52	2,950	1,381	47	2,999	2,211	74	↑ 22
White	10,194	5,682	56	9,533	4,746	50	8,933	6,746	76	↑ 20
Race Unknown	225	113	50	434	212	49	198	139	70	↑ 20



# By Voting Method

Not-In-Person Early Vote In-Person Other Provisional Unknown



	2016		2018		2020		2016-2020	
	Voted	Rate	Voted	Rate	Voted	Rate	Change (p.p.)	
Early Vote	–	–	–	–	3,013	14	–	
In-Person on Election Day	5,200	36	1,070	8	146	1	-35	↓
Not-In-Person	9,287	64	10,053	78	16,993	81	17	↑
Other	–	–	–	–	–	–	–	
Provisional	–	–	–	–	–	–	–	
Voting Method Unknown	16	0	1,762	14	959	5	4	↑

These are estimated rates for vote method utilization, the number of students utilizing each method, and the percent of students utilizing each method. Not all U.S. states provide information on vote method; voting method for voter files from these states are classified “Voting Method Unknown.” For a list of these states, see our FAQ. <https://idhe.tufts.edu/nsive/nsive-faq#CampusReports>

# By Age Group

	2016	2018	2020
18-21	42%	38%	68%
22-24	47%	42%	67%
25-29	52%	44%	67%
30-39	59%	53%	70%
40-49	69%	58%	75%
50+	78%	66%	81%

**Voting is habit-forming and young voters will usually continue as voters in subsequent elections.** Also, young voters are more likely to be contacted by campaigns and are visible, and therefore significant, to elected officials. While in the past, we have seen voting rates increase across age groups, in recent cycles, the most significant increases have been among first-time and the youngest voters. Some colleges serve primarily young students, traditionally viewed as students in the 18-21 or 22-24 categories here. Others have much higher numbers of enrolled older undergraduate or graduate students.

# Looking Closer

## By Age Group

Here, we provide the numbers of students in each age category and the voting rates for each group. These are based on the student's age on the day of the election, as calculated by the National Student Clearinghouse using data from student enrollment records.

	2016			2018			2020			2016-2020 Change (p.p)
	Enrolled	Voted	Rate	Enrolled	Voted	Rate	Enrolled	Voted	Rate	
18-21	12,854	5,446	42	12,996	4,911	38	14,085	9,592	68	↑ 26
22-24	8,746	4,135	47	8,831	3,713	42	8,285	5,587	67	↑ 20
25-29	5,315	2,741	52	5,298	2,332	44	4,928	3,297	67	↑ 15
30-39	2,385	1,406	59	2,432	1,282	53	2,586	1,821	70	↑ 11
40-49	770	528	69	764	444	58	730	550	75	↑ 7
50+	328	257	78	310	204	66	327	264	81	↑ 2

# Looking Closer

## By Sex

	2016			2018			2020			2016-2020	
	Enrolled	Voted	Rate	Enrolled	Voted	Rate	Enrolled	Voted	Rate	Change (p.p)	
Female	17,129	8,621	50	17,166	7,631	44	17,766	12,549	71	↑	20
Male	13,154	5,840	44	13,376	5,204	39	13,123	8,523	65	↑	21

**These are estimated voting rates for sex groups and the numbers we used to calculate their voting rates.** These classifications are provided by campuses and are obtained following the reporting procedures defined by the National Center for Education Statistics (NCES) of the Institute of Education Sciences (IES). Presently, NCES requires institutions to report students as “Male” or “Female” only.\*

If you notice missing data in this page, it could mean any of the following for your institution: (i) does not report this data; (ii) did not provide this data in past years; (iii) does not separately submit data for one or more of the demographic groups, or (iv) the data is reported for 10 or fewer students.

\*<https://surveys.nces.ed.gov/ipeds/public/survey-materials/faq?faqid=11>

# Looking Closer

## By Education Level / Undergraduate Class Year

	2016			2018			2020			2016-2020	
	Enrolled	Voted	Rate (%)	Enrolled	Voted	Rate (%)	Enrolled	Voted	Rate (%)	Change (p.p)	
EDUCATION LEVEL											
Undergraduate	27,563	12,802	46	27,697	11,287	41	28,071	19,003	68	↑	21
Graduate	2,466	1,517	62	2,591	1,413	55	2,612	1,919	73	↑	12
Class Unknown	369	194	53	343	186	54	258	189	73	↑	21
CLASS YEAR											
First Year	5,110	38	1,962	4,695	33	1,533	4,389	63	2,766	↑	25
Second Year	3,467	42	1,451	3,582	37	1,330	4,447	68	3,003	↑	26
Upper Level	18,888	49	9,315	19,085	43	8,251	19,117	69	13,142	↑	19
ENROLLMENT STATUS											
Full-time	24,277	11,361	47	24,712	10,178	41	24,710	16,886	68	↑	22
Part-time	6,121	3,152	51	5,919	2,708	46	6,231	4,225	68	↑	16

These are estimated voting rates by Education Level (undergraduate/graduate), Class Year, and Enrollment Status (full-time/part-time), and the numbers we used to calculate these rates.

If you notice missing data in this page, it could mean any of the following for your institution: (i) does not report this data; (ii) did not provide this data in past years; (iii) does not separately submit data for one or more of the demographic groups, or (iv) the data is reported for 10 or fewer students.

## By Field of Study

FIELDS	2016			2018			2020			2016-2020 RateChange (p.p)
	Enrolled	Voted	Rate	Enrolled	Voted	Rate	Enrolled	Voted	Rate	
Architecture	147	58	39	180	76	42	228	158	69	↑ 30
Area, Ethnic, Cultural, and Gender Studies	211	110	52	206	87	42	181	122	67	↑ 15
Biological and Biomedical Sciences	1,730	771	45	1,821	703	39	1,823	1,182	65	↑ 20
Business, Management, and Marketing	3,717	1,621	44	3,533	1,314	37	3,695	2,382	64	↑ 21
Communication and Journalism	1,657	847	51	1,612	736	46	1,427	1,072	75	↑ 24
Computer and Information Sciences	1,099	447	41	1,332	436	33	1,520	841	55	↑ 15
Education	761	487	64	938	506	54	849	654	77	↑ 13

**These are estimated voting rates by field of study, and the numbers we used to calculate the field of study rates.** For an explanation of CIP codes, please see our FAQ.\* There are roughly 8,000 fields of study among U.S. colleges and universities, so we provide rates for condensed categories.

\*<https://tufts.app.box.com/v/idhe-nslve-report-faq>

## By Field of Study

FIELDS	2016			2018			2020			2016-2020 Change (p.p)
	Enrolled	Voted	Rate	Enrolled	Voted	Rate	Enrolled	Voted	Rate	
Engineering and Engineering Technologies	2,946	1,206	41	2,976	1,017	34	2,908	1,783	61	↑ 20
English Language and Literature	516	328	64	540	293	54	527	406	77	↑ 13
Family and Consumer/Human Sciences	2,134	1,053	49	2,353	964	41	1,716	1,173	68	↑ 19
Foreign Languages, Literatures, and Lingui..	159	83	52	140	53	38	132	71	54	↑ 2
Health Professions	2,527	1,180	47	2,338	948	41	2,831	1,978	70	↑ 23
History	447	273	61	493	284	58	476	379	80	↑ 19
Law Enforcement, Firefighting, and Protec..	1,607	747	46	1,682	706	42	1,903	1,283	67	↑ 21
Liberal Arts and Sciences, and Humanities	1,339	576	43	1,387	523	38	1,144	761	67	↑ 24
Mathematics and Statistics	266	122	46	295	119	40	337	222	66	↑ 20
Multi/Interdisciplinary Studies	288	135	47	235	106	45	509	344	68	↑ 21
Natural Resources and Conservation	224	131	58	239	140	59	252	196	78	↑ 19
Parks, Recreation, Leisure, and Fitness Stu..	1,978	760	38	1,615	577	36	1,438	967	67	↑ 29
Philosophy and Religious Studies	110	53	48	134	65	49	91	63	69	↑ 21
Physical Sciences	395	206	52	392	193	49	364	261	72	↑ 20



## By Field of Study

FIELDS	2016			2018			2020			2016-2020 Change (p.p)
	Enrolled	Voted	Rate	Enrolled	Voted	Rate	Enrolled	Voted	Rate	
Psychology	1,501	761	51	1,667	701	42	1,988	1,417	71	↑ 21
Public Administration and Social Service Professions	1,030	562	55	892	453	51	883	660	75	↑ 20
Social Sciences	2,248	1,270	56	2,253	1,196	53	2,325	1,723	74	↑ 18
Visual and Performing Arts	1,031	552	54	1,042	504	48	1,135	824	73	↑ 19
Unknown	330	174	53	336	186	55	259	189	73	↑ 20

# About This Report

## Thank you for participating in the National Study of Learning, Voting, and Engagement.

Since NSLVE's launch in 2013, nearly 1,200 colleges and universities have signed up to receive their voting rates for the 2012, 2014, 2016, 2018, and 2020 federal elections.

Along with others, your institution's participation in this study has allowed us to build a robust database of over 50 million college student records, about 10 million for each election year, that serve as a foundation for innovative research on college student political learning and engagement in democracy.

NSLVE is a signature initiative of the Institute for Democracy and Higher Education (IDHE) at Tufts University's Jonathan M. Tisch College of Civic Life. The mission of IDHE is to shift college and university priorities and culture to advance political learning, agency, and equity. We achieve our mission through research, resource development, technical assistance, and advocacy.

### About the Data

The voter registration and voting rates in this report reflect the percentage of your institution's students who were eligible to vote and who actually voted in the 2016, 2018, and 2020 elections.

These results are based on enrollment records your institution submitted to the National Student Clearinghouse (NSC) and publicly available voting files collected by L2 Political.

Enrollment lists are adjusted by deducting students under age 18 (at the time of the election), people identified as non-degree seeking and those identified by campuses as "nonresident aliens" (NRAs) (the federal government's category for mostly international students). Unfortunately, not all campuses report NRAs to NSC. For those campuses, we use IPEDS to calculate the number of NRA students on each campus and adjust NSC enrollment numbers to estimate the number of students to remove. We also quality check NRA removals by verifying that there is little to no discrepancy between the number of international students reported by the campus to IPEDS and to NSC. We cannot adjust subgroup analyses absent identification of NRAs verified by the process above. We welcome closer partnerships with individual colleges and universities to provide more accurate rates. For more on the data and the matching process, see our FAQ on Campus Reports.

California State University-Sacramento

Thank you for the work you do to improve your students' political learning and engagement. We hope that you find your NSLVE report useful. For up-to-date news on NSLVE data, resources, and to sign up for our newsletter visit: <https://idhe.tufts.edu>.

References: IDHE encourages report recipients to share this report as broadly as possible, including posting it on the college or university's website. When doing so, please use the following citation: Institute for Democracy & Higher Education: National Study of Learning, Voting and Engagement. (2021). 2016, 2018, and 2020 report for \_\_\_\_\_ [name of institution]. Medford, MA.



Barnum Hall  
163 Packard Ave.  
Medford, MA 02155

tischcollege@tufts.edu  
617.627.3453



Institute for Democracy & Higher Education:  
National Study of Learning, Voting, and Engagement  
Barnum Hall, Medford, MA 02155

Follow Us on Twitter: @TuftsIDHE  
NSLVE@tufts.edu  
617.627.0620