



October 2021

Student Voting Rates for Muskegon Community College

2020 NSLVE Campus Report



Jonathan M. Tisch
College of Civic Life



INSTITUTE FOR DEMOCRACY
& HIGHER EDUCATION

October 2021

Dear Colleagues:

We are pleased to send this tailored report containing your students' voting rates for 2020. This report contains three years of relevant topline data: 2016, 2018, and 2020. As always, we disaggregate the data so you can better identify and address gaps in participation.

College and university students participated in record-breaking numbers in the 2020 election. In 2016, the Average Institutional Voting Rate was 53%. This year, it jumped to 66%. We encourage you to review Democracy Counts 2020, our most recent national report.

As in past years, we urge you to share this report widely and strategically, particularly with faculty who, in 2020, were often the most consistent communicators with students about ever-changing voting conditions and deadlines. We also urge you to review our recommendations for engaging elections to cultivate a robust and healthy campus climate for political engagement, discourse, equity, and participation: Election Imperatives (2019) and the more recent Election Imperatives: A Time of Physical Distancing and Social Action. Since "pervasive political discussions" and attentiveness to the campus culture around speech and academic freedom are among our top recommendations, we direct you to our discussion guides on talking about your NSLVE report, on free speech and inclusion, and on hot topics, our Making Sense of ... guides.

Finally, we always encourage you to work with us. Help us help you get better data by reaching out. Email IDHE@Tufts.edu for more information. And as always, watch your inbox for our periodic newsletter, IDHE Update, for announcements about upcoming releases and new resources.

Congratulations on engaging your students in the 2020 election. Remember, student political learning is a year-round objective. Elections may be episodic, but student political engagement should not be.

All the Best,
IDHE Team



(Top Row from left) Duy Trinh, Program Administrator; Adam Gismondi, Director of Impact; Dave Brinker, Senior Researcher;
(Bottom Row from left) Nancy Thomas, Director; Norma López, Postdoctoral Scholar; Prabhat Gautam, Data Manager.

We also want to acknowledge and thank **Syed Golam Mohaimen, M.S. student in Data Science at Tufts University** for his contributions toward the creation of these reports.

In This Report

This report presents data on student voter participation rates for your campus. The topline counts on page 5 tells you how many students voted, but we encourage you to look carefully at the data on subsequent pages to learn who voted. Data are presented in the form of vessel charts, overlapping donut charts, and tables.



Vessel Chart

This chart shows rates out of 100%, with arrows to the right of each bar representing relevant national averages (medians), which you can find in IDHE's national report Democracy Counts 2020.

	2014			2018			2014-2018 Change (p.p.)
	Enrolled	Voted	Rate (%)	Enrolled	Voted	Rate (%)	
Asian	-	-	-	-	-	-	-
American Indian/ Alaska Native	-	-	-	-	-	-	-
Black	-	-	-	-	-	-	-
Hispanic	-	-	-	-	-	-	-

Tables

The tables show, on the left-side columns, the numbers of students and the rates from 2016, 2018, and 2020. On the left-side, percentage point (p.p.) changes between 2016 and 2020. A red down arrow indicates a decrease, a green up arrow indicates an increase, and a yellow arrow pointing to the right indicates no change. "-" in these tables indicates that the data is unavailable/missing, or is available for 10 or less students.



Overlapping Donut Chart

This chart is used to show the breakdown of vote method utilization (page 10), with the outer ring showing your campus method utilization and the inner ring showing the national breakdown. These are described in percentages.

Voting, Registration and Yield Rates

YOUR INSTITUTION

65.1%

2020 Voting Rate

+12.7

Change From 2016

ALL INSTITUTIONS

66%

2020 Voting Rate

REGISTRATION RATE

73.9%

65.3%

86.7%

2016

2018

2020

The **Registration Rate** is the percent of your voting-eligible students who registered to vote.

VOTING RATE OF REGISTERED STUDENTS

70.8%

58.9%

75.1%

2016

2018

2020

The **Voting Rate of Registered Students** is the percent of registered students who voted on Election Day. We often refer to this as the “yield” rate.

VOTING RATE

52.4%

38.5%

65.1%

2016

2018

2020

The **Voting Rate** is the percentage of eligible students who voted on Election Day. The voting rate is also the product of the registration and yield rates.

Looking Closer

Voting and Registration Rates

	2016	2018	2020	2016-2020 Change (p.p.)
Total Student Enrollment	3,645	3,362	2,742	↓ -903
(Age under 18/Unknown)	-	-	-	-
(IPEDS estimated non-resident aliens)	13	16	16	↑ 3
(FERPA records blocked)	-	-	-	-
(Non-Degree Seeking Students)	254	-	158	↓ -96
Total eligible voters	3,373	3,342	2,561	↓ -812
Number of students who registered	2,493	2,183	2,221	↓ -272
Number of students who voted	1,766	1,286	1,668	↓ -98
Registration Rate %	74	65	87	↑ 13
Voting Rate of Registered Students %	71	59	75	↑ 4
Voting Rate %	52	38	65	↑ 13

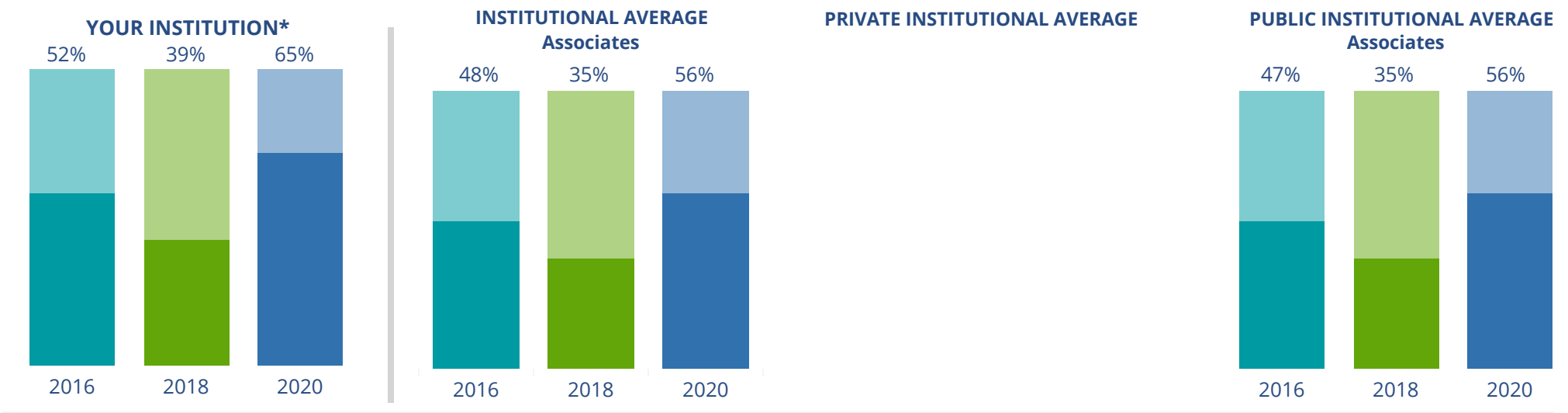
This page provides the numbers we used to calculate your voting, registration, and yield rates. The sub-categories under total student enrollment are the adjustments that we make to account for students who are ineligible to vote due to age or citizenship status. We also exclude, when correctly flagged, students who are not pursuing degrees.

We use IPEDS-derived estimates of NRAs when institutions do not submit non-resident alien status data to NSC, or we cannot verify the accuracy of the reported counts. This estimate is given by "IPEDS estimated non-resident aliens" on this page. If you believe the number of international students reported on this report is incorrect, you can manually adjust your institution's voting rates by using our recalculation tool. <https://id-he.tufts.edu/nsive/nsive-recalculation-tool>.

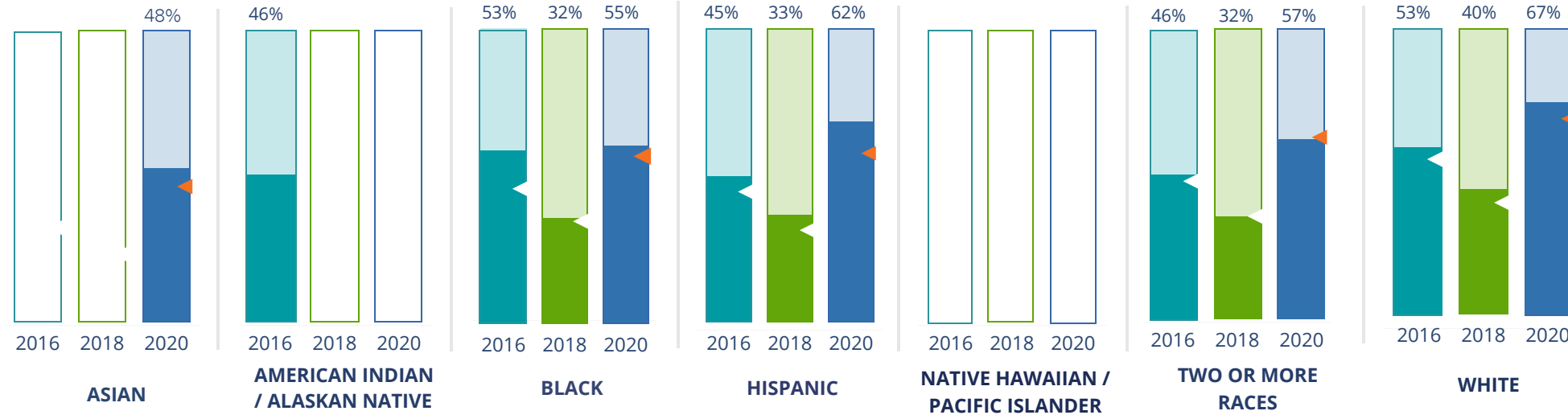
By Institution Types



These are estimated voting rates of your institution compared to the average voting rates of similar institutions in NSLVE. *"Your Institution" chart is presented at a different scale.



By Race / Ethnicity



These are estimated voting rates for race / ethnicity groups. These classifications are provided by campuses and are obtained following race reporting procedures* defined by the National Center for Education Statistics of the Institute of Education Sciences (IES). Please see our FAQ for more detail on why we cannot report national benchmark for some of the demographic groups:

<https://tufts.app.box.com/v/idhe-nsve-report-faq>

If you notice unavailable/missing data in this page, it could mean any of the following for your institution: (i) does not report this data; (ii) did not provide this data in past years; (iii) does not separately submit data for one or more of the demographic groups, or (iv) the data is reported for 10 or fewer students.

* <https://nces.ed.gov/ipeds/report-your-data/race-ethnicity-collecting-data-for-reporting-purposes>

Looking Closer

By Race/Ethnicity

This page provides the numbers we used to calculate race / ethnicity group voting rates. We

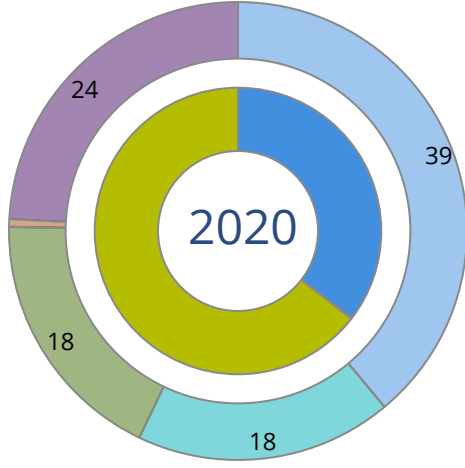
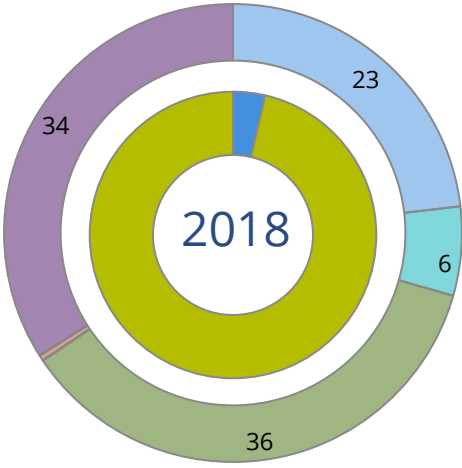
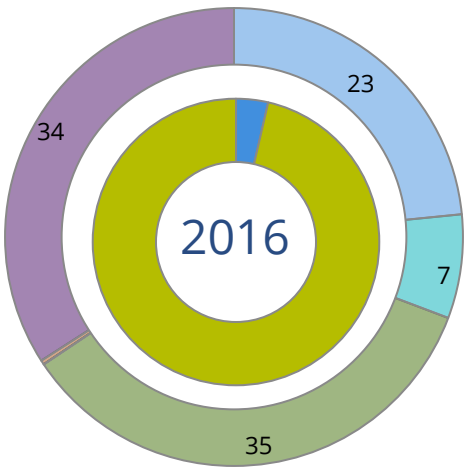
include the counts of students and the change in rates between the two most recent comparable election years.

If you notice unavailable/missing data in this page, it could mean any of the following for your institution: (i) does not report this data; (ii) did not provide this data in past years; (iii) does not separately submit data for one or more of the demographic groups, or (iv) the data is reported for 10 or fewer students.

	2016			2018			2020			2016-2020 Change (p.p)
	Enrolled	Voted	Rate	Enrolled	Voted	Rate	Enrolled	Voted	Rate	
Asian	28	-	-	26	-	-	44	21	48	-
American Indian/ Alaska Native	24	11	46	22	-	-	14	-	-	-
Black	251	133	53	275	89	32	179	98	55	↑ 2
Hispanic	98	44	45	214	71	33	190	118	62	↑ 17
Native Hawaiian/ Pacific Islander	-	-	-	-	-	-	-	-	-	-
2 or More Races	129	59	46	131	42	32	118	67	57	↑ 11
White	2,496	1,318	53	2,466	975	40	1,927	1,293	67	↑ 14
Race Unknown	357	191	54	221	98	44	101	63	62	↑ 9

By Voting Method

Not-In-Person Early Vote In-Person Other Provisional Unknown



	2016		2018		2020		2016-2020	
	Voted	Rate	Voted	Rate	Voted	Rate	Change (p.p.)	
Early Vote	–	–	–	–	–	–	–	
In-Person on Election Day	1,702	96	1,240	96	1,076	65	-32	↓
Not-In-Person	63	4	46	4	590	35	32	↑
Other	–	–	–	–	–	–	–	
Provisional	–	–	–	–	–	–	–	
Voting Method Unknown	–	–	–	–	–	–	–	

These are estimated rates for vote method utilization, the number of students utilizing each method, and the percent of students utilizing each method. Not all U.S. states provide information on vote method; voting method for voter files from these states are classified “Voting Method Unknown.” For a list of these states, see our FAQ. <https://idhe.tufts.edu/nsive/nsive-faq#CampusReports>

By Age Group

	2016	2018	2020
18-21	51%	36%	69%
22-24	51%	38%	60%
25-29	47%	37%	51%
30-39	58%	44%	57%
40-49	65%	50%	59%
50+	76%	66%	83%

Voting is habit-forming and young voters will usually continue as voters in subsequent elections. Also, young voters are more likely to be contacted by campaigns and are visible, and therefore significant, to elected officials. While in the past, we have seen voting rates increase across age groups, in recent cycles, the most significant increases have been among first-time and the youngest voters. Some colleges serve primarily young students, traditionally viewed as students in the 18-21 or 22-24 categories here. Others have much higher numbers of enrolled older undergraduate or graduate students.

Looking Closer

By Age Group

Here, we provide the numbers of students in each age category and the voting rates for each group. These are based on the student's age on the day of the election, as calculated by the National Student Clearinghouse using data from student enrollment records.

	2016			2018			2020			2016-2020	
	Enrolled	Voted	Rate	Enrolled	Voted	Rate	Enrolled	Voted	Rate	Change (p.p)	
18-21	2,082	1,060	51	2,063	744	36	1,716	1,177	69	↑	18
22-24	424	216	51	412	155	38	263	158	60	↑	9
25-29	380	180	47	353	132	37	272	138	51	↑	3
30-39	292	169	58	323	143	44	219	125	57	↓	-1
40-49	139	91	65	142	71	50	63	37	59	↓	-7
50+	66	50	76	62	41	66	40	33	83	↑	7

Looking Closer

By Sex

	2016			2018			2020			2016-2020	
	Enrolled	Voted	Rate	Enrolled	Voted	Rate	Enrolled	Voted	Rate	Change (p.p)	
Female	1,899	1,038	55	1,936	761	39	1,513	973	64	↑	10
Male	1,473	722	49	1,383	510	37	999	656	66	↑	17

These are estimated voting rates for sex groups and the numbers we used to calculate their voting rates. These classifications are provided by campuses and are obtained following the reporting procedures defined by the National Center for Education Statistics (NCES) of the Institute of Education Sciences (IES). Presently, NCES requires institutions to report students as “Male” or “Female” only.*

If you notice missing data in this page, it could mean any of the following for your institution: (i) does not report this data; (ii) did not provide this data in past years; (iii) does not separately submit data for one or more of the demographic groups, or (iv) the data is reported for 10 or fewer students.

*<https://surveys.nces.ed.gov/ipeds/public/survey-materials/faq?faqid=11>

Looking Closer

By Education Level / Undergraduate Class Year

	2016			2018			2020			2016-2020	
	Enrolled	Voted	Rate (%)	Enrolled	Voted	Rate (%)	Enrolled	Voted	Rate (%)	Change (p.p)	
EDUCATION LEVEL											
Undergraduate	3,247	1,690	52	3,047	1,159	38	2,437	1,572	65	↑	12
Graduate	-	-	-	-	-	-	-	-	-	-	-
Class Unknown	136	76	56	308	126	41	136	96	71	↑	15
CLASS YEAR											
First Year	1,740	48	841	2,730	37	1,008	1,764	66	1,170	↑	18
Second Year	1,643	56	925	625	44	278	809	62	498	↑	5
Upper Level	-	-	-	-	-	-	-	-	-	-	-
ENROLLMENT STATUS											
Full-time	1,403	747	53	1,515	562	37	1,188	818	69	↑	16
Part-time	1,980	1,019	51	1,840	724	39	1,385	850	61	↑	10

These are estimated voting rates by Education Level (undergraduate/graduate), Class Year, and Enrollment Status (full-time/part-time), and the numbers we used to calculate these rates.

If you notice missing data in this page, it could mean any of the following for your institution: (i) does not report this data; (ii) did not provide this data in past years; (iii) does not separately submit data for one or more of the demographic groups, or (iv) the data is reported for 10 or fewer students.

By Field of Study

FIELDS	2016			2018			2020			2016-2020	
	Enrolled	Voted	Rate	Enrolled	Voted	Rate	Enrolled	Voted	Rate	Change (p.p)	
Business, Management, and Marketing	157	82	52	140	46	33	102	59	58	↑	6
Communication and Journalism	22	15	68	18	11	61	11	–	–		–
Communications Technologies/Technicians	19	12	63	13	–	–	–	–	–		–
Computer and Information Sciences	96	45	47	105	43	41	83	52	63	↑	16
Education	101	54	53	103	35	34	66	45	68	↑	15
Engineering and Engineering Technologies	183	77	42	204	77	38	126	77	61	↑	19
Health Professions	709	336	47	863	301	35	620	361	58	↑	11

These are estimated voting rates by field of study, and the numbers we used to calculate the field of study rates. For an explanation of CIP codes, please see our FAQ.* There are roughly 8,000 fields of study among U.S. colleges and universities, so we provide rates for condensed categories.

*<https://tufts.app.box.com/v/idhe-nslve-report-faq>

By Field of Study

FIELDS	2016			2018			2020			2016-2020 Change (p.p)
	Enrolled	Voted	Rate	Enrolled	Voted	Rate	Enrolled	Voted	Rate	
Law Enforcement, Firefighting, and Protec..	141	61	43	95	35	37	54	30	56	↑ 12
Liberal Arts and Sciences, and Humanities	1,638	934	57	1,469	600	41	1,213	830	68	↑ 11
Mechanic and Repair Technologies/Techni..	46	16	35	62	16	26	17	–	–	–
Precision Production	79	32	41	86	26	30	40	25	63	↑ 22
Visual and Performing Arts	47	21	45	43	15	35	71	52	73	↑ 29
Unknown	136	76	56	148	72	49	148	104	70	↑ 14

About This Report

Thank you for participating in the National Study of Learning, Voting, and Engagement.

Since NSLVE's launch in 2013, nearly 1,200 colleges and universities have signed up to receive their voting rates for the 2012, 2014, 2016, 2018, and 2020 federal elections.

Along with others, your institution's participation in this study has allowed us to build a robust database of over 50 million college student records, about 10 million for each election year, that serve as a foundation for innovative research on college student political learning and engagement in democracy.

NSLVE is a signature initiative of the Institute for Democracy and Higher Education (IDHE) at Tufts University's Jonathan M. Tisch College of Civic Life. The mission of IDHE is to shift college and university priorities and culture to advance political learning, agency, and equity. We achieve our mission through research, resource development, technical assistance, and advocacy.

About the Data

The voter registration and voting rates in this report reflect the percentage of your institution's students who were eligible to vote and who actually voted in the 2016, 2018, and 2020 elections.

These results are based on enrollment records your institution submitted to the National Student Clearinghouse (NSC) and publicly available voting files collected by L2 Political.

Enrollment lists are adjusted by deducting students under age 18 (at the time of the election), people identified as non-degree seeking and those identified by campuses as "nonresident aliens" (NRAs) (the federal government's category for mostly international students). Unfortunately, not all campuses report NRAs to NSC. For those campuses, we use IPEDS to calculate the number of NRA students on each campus and adjust NSC enrollment numbers to estimate the number of students to remove. We also quality check NRA removals by verifying that there is little to no discrepancy between the number of international students reported by the campus to IPEDS and to NSC. We cannot adjust subgroup analyses absent identification of NRAs verified by the process above. We welcome closer partnerships with individual colleges and universities to provide more accurate rates. For more on the data and the matching process, see our FAQ on Campus Reports.

Muskegon Community College

Thank you for the work you do to improve your students' political learning and engagement. We hope that you find your NSLVE report useful. For up-to-date news on NSLVE data, resources, and to sign up for our newsletter visit: <https://idhe.tufts.edu>.

References: IDHE encourages report recipients to share this report as broadly as possible, including posting it on the college or university's website. When doing so, please use the following citation: Institute for Democracy & Higher Education: National Study of Learning, Voting and Engagement. (2021). 2016, 2018, and 2020 report for _____ [name of institution]. Medford, MA.



Barnum Hall
163 Packard Ave.
Medford, MA 02155

tischcollege@tufts.edu
617.627.3453



Institute for Democracy & Higher Education:
National Study of Learning, Voting, and Engagement
Barnum Hall, Medford, MA 02155

Follow Us on Twitter: @TuftsIDHE
NSLVE@tufts.edu
617.627.0620