



October 2021

# Student Voting Rates for Middle Georgia State University

2020 NSLVE Campus Report



Jonathan M. Tisch  
College of Civic Life



INSTITUTE FOR DEMOCRACY  
& HIGHER EDUCATION

**October 2021**

**Dear Colleagues:**

We are pleased to send this tailored report containing your students' voting rates for 2020. This report contains three years of relevant topline data: 2016, 2018, and 2020. As always, we disaggregate the data so you can better identify and address gaps in participation.

College and university students participated in record-breaking numbers in the 2020 election. In 2016, the Average Institutional Voting Rate was 53%. This year, it jumped to 66%. We encourage you to review Democracy Counts 2020, our most recent national report.

As in past years, we urge you to share this report widely and strategically, particularly with faculty who, in 2020, were often the most consistent communicators with students about ever-changing voting conditions and deadlines. We also urge you to review our recommendations for engaging elections to cultivate a robust and healthy campus climate for political engagement, discourse, equity, and participation: Election Imperatives (2019) and the more recent Election Imperatives: A Time of Physical Distancing and Social Action. Since "pervasive political discussions" and attentiveness to the campus culture around speech and academic freedom are among our top recommendations, we direct you to our discussion guides on talking about your NSLVE report, on free speech and inclusion, and on hot topics, our Making Sense of ... guides.

Finally, we always encourage you to work with us. Help us help you get better data by reaching out. Email [IDHE@Tufts.edu](mailto:IDHE@Tufts.edu) for more information. And as always, watch your inbox for our periodic newsletter, IDHE Update, for announcements about upcoming releases and new resources.

Congratulations on engaging your students in the 2020 election. Remember, student political learning is a year-round objective. Elections may be episodic, but student political engagement should not be.

All the Best,  
IDHE Team



**(Top Row from left) Duy Trinh, Program Administrator; Adam Gismondi, Director of Impact; Dave Brinker, Senior Researcher;**  
**(Bottom Row from left) Nancy Thomas, Director; Norma López, Postdoctoral Scholar; Prabhat Gautam, Data Manager.**

We also want to acknowledge and thank **Syed Golam Mohaimen, M.S. student in Data Science at Tufts University** for his contributions toward the creation of these reports.

# In This Report

This report presents data on student voter participation rates for your campus. The topline counts on page 5 tells you how many students voted, but we encourage you to look carefully at the data on subsequent pages to learn who voted. Data are presented in the form of vessel charts, overlapping donut charts, and tables.



**Vessel Chart**

This chart shows rates out of 100%, with arrows to the right of each bar representing relevant national averages (medians), which you can find in IDHE's national report Democracy Counts 2020.

	2014			2018			2014-2018
	Enrolled	Voted	Rate (%)	Enrolled	Voted	Rate (%)	Change (p.p.)
Asian	-	-	-	-	-	-	-
American Indian/ Alaska Native	-	-	-	-	-	-	-
Black	-	-	-	-	-	-	-
Hispanic	-	-	-	-	-	-	-

## Tables

The tables show, on the left-side columns, the numbers of students and the rates from 2016, 2018, and 2020. On the left-side, percentage point (p.p.) changes between 2016 and 2020. A red down arrow indicates a decrease, a green up arrow indicates an increase, and a yellow arrow pointing to the right indicates no change. "-" in these tables indicates that the data is unavailable/missing, or is available for 10 or less students.



**Overlapping Donut Chart**

This chart is used to show the breakdown of vote method utilization (page 10), with the outer ring showing your campus method utilization and the inner ring showing the national breakdown. These are described in percentages.

# Voting, Registration and Yield Rates

YOUR INSTITUTION

65.4%

2020 Voting Rate

+12.7

Change From 2016

ALL INSTITUTIONS

66%

2020 Voting Rate

REGISTRATION RATE

77.5%	82.2%	90.5%
2016	2018	2020

The **Registration Rate** is the percent of your voting-eligible students who registered to vote.

VOTING RATE OF REGISTERED STUDENTS

67.9%	58.3%	72.2%
2016	2018	2020

The **Voting Rate of Registered Students** is the percent of registered students who voted on Election Day. We often refer to this as the “yield” rate.

VOTING RATE

52.7%	47.9%	65.4%
2016	2018	2020

The **Voting Rate** is the percentage of eligible students who voted on Election Day. The voting rate is also the product of the registration and yield rates.

# Looking Closer

## Voting and Registration Rates

	2016	2018	2020	2016-2020 Change (p.p.)
Total Student Enrollment	7,077	6,969	7,563	↑ 486
(Age under 18/Unknown)	-	-	-	-
(IPEDS estimated non-resident aliens)	68	117	122	↑ 54
(FERPA records blocked)	12	-	-	-
(Non-Degree Seeking Students)	-	-	-	-
Total eligible voters	6,997	6,843	7,432	↑ 435
Number of students who registered	5,426	5,622	6,727	↑ 1,301
Number of students who voted	3,686	3,279	4,859	↑ 1,173
Registration Rate %	78	82	91	↑ 13
Voting Rate of Registered Students %	68	58	72	↑ 4
Voting Rate %	53	48	65	↑ 13

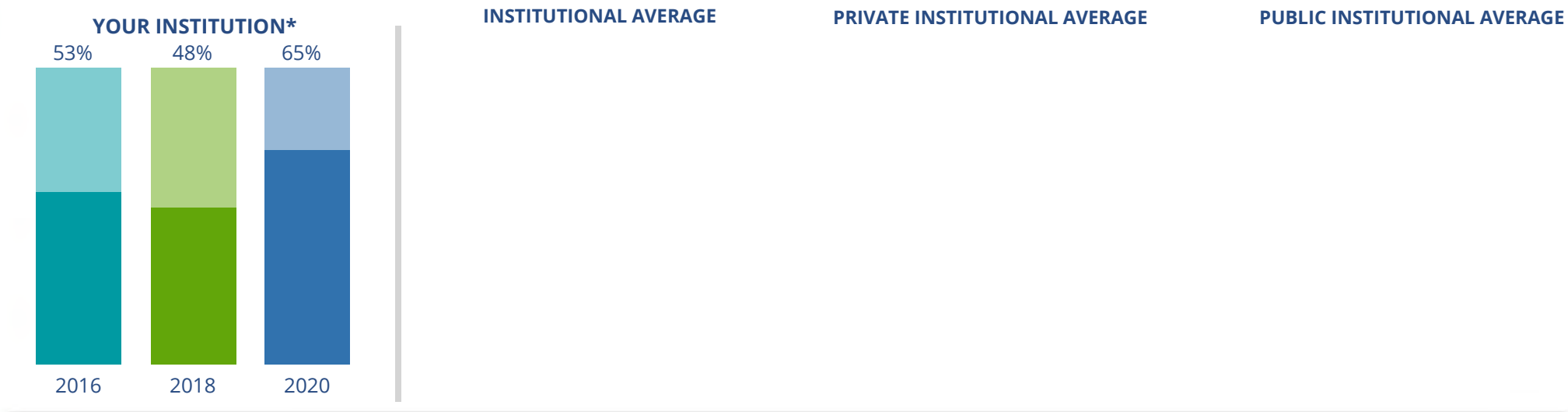
**This page provides the numbers we used to calculate your voting, registration, and yield rates.** The sub-categories under total student enrollment are the adjustments that we make to account for students who are ineligible to vote due to age or citizenship status. We also exclude, when correctly flagged, students who are not pursuing degrees.

We use IPEDS-derived estimates of NRAs when institutions do not submit non-resident alien status data to NSC, or we cannot verify the accuracy of the reported counts. This estimate is given by "IPEDS estimated non-resident aliens" on this page. If you believe the number of international students reported on this report is incorrect, you can manually adjust your institution's voting rates by using our recalculation tool. <https://id-he.tufts.edu/nsive/nsive-recalculation-tool>.

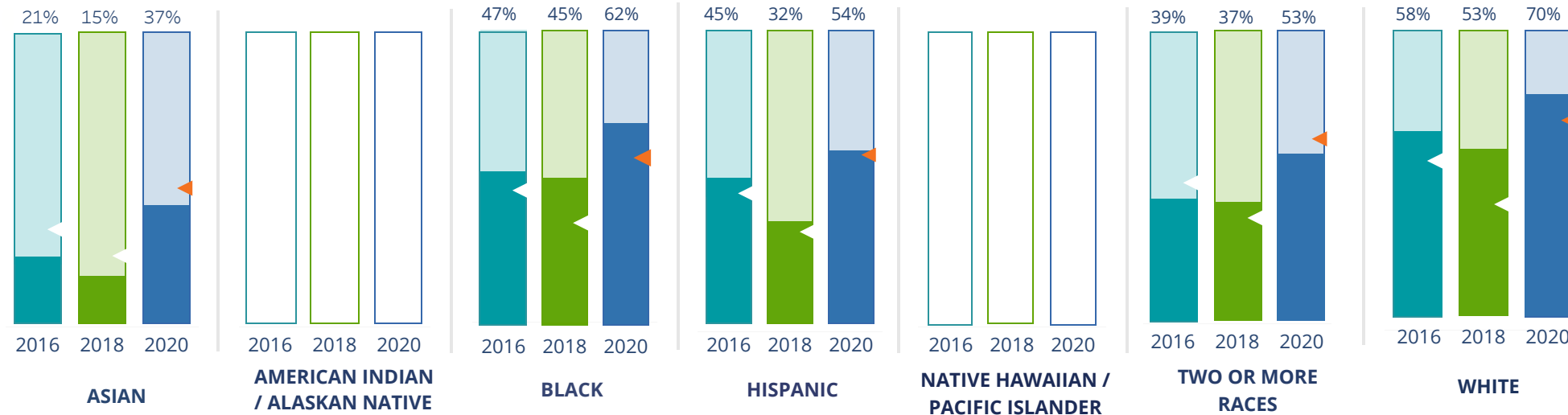
# By Institution Types



These are estimated voting rates of your institution compared to the average voting rates of similar institutions in NSLVE. \*"Your Institution" chart is presented at a different scale.



## By Race / Ethnicity



**These are estimated voting rates for race / ethnicity groups.** These classifications are provided by campuses and are obtained following race reporting procedures\* defined by the National Center for Education Statistics of the Institute of Education Sciences (IES). Please see our FAQ for more detail on why we cannot report national benchmark for some of the demographic groups:

<https://tufts.app.box.com/v/idhe-nsive-report-faq>

If you notice unavailable/missing data in this page, it could mean any of the following for your institution: (i) does not report this data; (ii) did not provide this data in past years; (iii) does not separately submit data for one or more of the demographic groups, or (iv) the data is reported for 10 or fewer students.

\* <https://nces.ed.gov/ipeds/report-your-data/race-ethnicity-collecting-data-for-reporting-purposes>



# Looking Closer

## By Race/Ethnicity

**This page provides the numbers we used to calculate race / ethnicity group voting rates.** We

include the counts of students and the change in rates between the two most recent comparable election years.

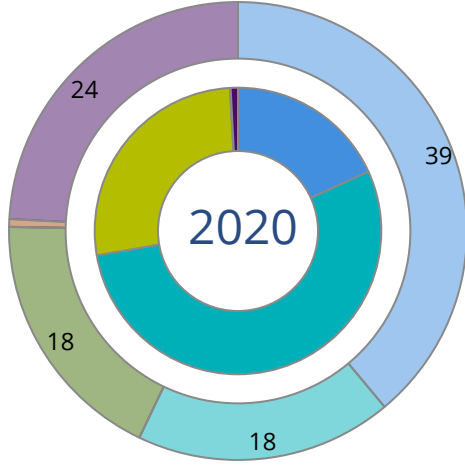
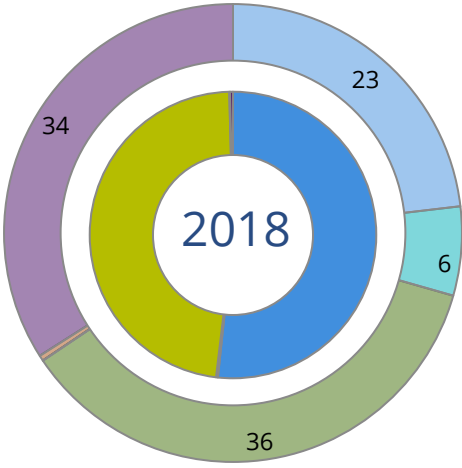
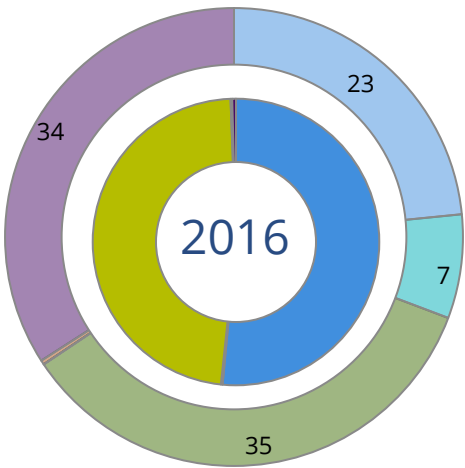
If you notice unavailable/missing data in this page, it could mean any of the following for your institution: (i) does not report this data; (ii) did not provide this data in past years; (iii) does not separately submit data for one or more of the demographic groups, or (iv) the data is reported for 10 or fewer students.

	2016			2018			2020			2016-2020 Change (p.p)
	Enrolled	Voted	Rate	Enrolled	Voted	Rate	Enrolled	Voted	Rate	
<b>Asian</b>	161	34	21	231	34	15	232	85	37	↑ 16
<b>American Indian/ Alaska Native</b>	11	-	-	-	-	-	12	-	-	-
<b>Black</b>	2,511	1,185	47	2,489	1,130	45	2,670	1,661	62	↑ 15
<b>Hispanic</b>	312	140	45	397	125	31	477	255	53	↑ 9
<b>Native Hawaiian/ Pacific Islander</b>	13	-	-	-	-	-	-	-	-	-
<b>2 or More Races</b>	234	90	38	252	94	37	332	175	53	↑ 14
<b>White</b>	3,781	2,203	58	3,528	1,870	53	3,790	2,658	70	↑ 12
<b>Race Unknown</b>	38	24	63	38	21	55	27	15	56	↓ -8



# By Voting Method

Not-In-Person Early Vote In-Person Other Provisional Unknown



	2016		2018		2020		2016-2020	
	Voted	Rate	Voted	Rate	Voted	Rate	Change (p.p.)	
Early Vote	-	-	-	-	2,631	54	-	
In-Person on Election Day	1,757	48	1,565	48	1,301	27	-21	↓
Not-In-Person	1,899	52	1,694	52	886	18	-33	↓
Other	-	-	-	-	-	-	-	
Provisional	-	-	-	-	-	-	-	
Voting Method Unknown	16	0	-	-	35	1	0	↑

These are estimated rates for vote method utilization, the number of students utilizing each method, and the percent of students utilizing each method. Not all U.S. states provide information on vote method; voting method for voter files from these states are classified "Voting Method Unknown." For a list of these states, see our FAQ. <https://idhe.tufts.edu/nsive/nsive-faq#CampusReports>

# By Age Group

	2016	2018	2020
18-21	47%	41%	62%
22-24	54%	47%	61%
25-29	53%	52%	64%
30-39	61%	54%	71%
40-49	71%	66%	74%
50+	81%	79%	84%

**Voting is habit-forming and young voters will usually continue as voters in subsequent elections.** Also, young voters are more likely to be contacted by campaigns and are visible, and therefore significant, to elected officials. While in the past, we have seen voting rates increase across age groups, in recent cycles, the most significant increases have been among first-time and the youngest voters. Some colleges serve primarily young students, traditionally viewed as students in the 18-21 or 22-24 categories here. Others have much higher numbers of enrolled older undergraduate or graduate students.

# Looking Closer

## By Age Group

Here, we provide the numbers of students in each age category and the voting rates for each group. These are based on the student's age on the day of the election, as calculated by the National Student Clearinghouse using data from student enrollment records.

	2016			2018			2020			2016-2020 Change (p.p)
	Enrolled	Voted	Rate	Enrolled	Voted	Rate	Enrolled	Voted	Rate	
18-21	3,595	1,681	47	3,568	1,479	41	3,787	2,359	62	↑ 16
22-24	1,345	721	54	1,379	655	47	1,446	886	61	↑ 8
25-29	850	449	53	843	441	52	928	593	64	↑ 11
30-39	806	488	61	726	395	54	836	594	71	↑ 11
40-49	287	203	71	269	177	66	348	258	74	↑ 3
50+	178	144	81	167	132	79	202	169	84	↑ 3

# Looking Closer

## By Sex

	2016			2018			2020			2016-2020	
	Enrolled	Voted	Rate	Enrolled	Voted	Rate	Enrolled	Voted	Rate	Change (p.p)	
Female	4,099	2,245	55	3,986	1,984	50	4,285	2,777	65	↑	10
Male	2,962	1,441	49	2,966	1,295	44	3,262	2,082	64	↑	15

**These are estimated voting rates for sex groups and the numbers we used to calculate their voting rates.** These classifications are provided by campuses and are obtained following the reporting procedures defined by the National Center for Education Statistics (NCES) of the Institute of Education Sciences (IES). Presently, NCES requires institutions to report students as “Male” or “Female” only.\*

If you notice missing data in this page, it could mean any of the following for your institution: (i) does not report this data; (ii) did not provide this data in past years; (iii) does not separately submit data for one or more of the demographic groups, or (iv) the data is reported for 10 or fewer students.

\*<https://surveys.nces.ed.gov/ipeds/public/survey-materials/faq?faqid=11>

# Looking Closer

## By Education Level / Undergraduate Class Year

	2016			2018			2020			2016-2020	
	Enrolled	Voted	Rate (%)	Enrolled	Voted	Rate (%)	Enrolled	Voted	Rate (%)	Change (p.p)	
EDUCATION LEVEL											
Undergraduate	6,940	3,614	52	6,671	3,129	47	7,101	4,545	64	↑	12
Graduate	70	45	64	207	119	57	357	255	71	↑	7
Class Unknown	51	27	53	74	31	42	89	59	66	↑	13
CLASS YEAR											
First Year	2,673	44	1,180	2,368	37	871	2,307	57	1,305	↑	12
Second Year	1,394	52	730	1,425	48	687	1,473	65	951	↑	12
Upper Level	2,924	59	1,731	2,947	54	1,598	3,399	69	2,340	↑	10
ENROLLMENT STATUS											
Full-time	4,623	2,246	49	4,780	2,058	43	4,894	3,081	63	↑	14
Part-time	2,438	1,440	59	2,172	1,221	56	2,653	1,778	67	↑	8

These are estimated voting rates by Education Level (undergraduate/graduate), Class Year, and Enrollment Status (full-time/part-time), and the numbers we used to calculate these rates.

If you notice missing data in this page, it could mean any of the following for your institution: (i) does not report this data; (ii) did not provide this data in past years; (iii) does not separately submit data for one or more of the demographic groups, or (iv) the data is reported for 10 or fewer students.

## By Field of Study

FIELDS	2016			2018			2020			2016-2020	
	Enrolled	Voted	Rate	Enrolled	Voted	Rate	Enrolled	Voted	Rate	Change (p.p)	
Biological and Biomedical Sciences	485	245	51	436	185	42	309	183	59	↑	9
Business, Management, and Marketing	1,006	549	55	900	467	52	1,022	667	65	↑	11
Communication and Journalism	144	74	51	169	78	46	137	94	69	↑	17
Computer and Information Sciences	694	364	52	842	389	46	894	538	60	↑	8
Education	300	175	58	96	58	60	338	229	68	↑	9
Engineering and Engineering Technologies	28	19	68	15	–	–	33	21	64	↓	-4
English Language and Literature	109	68	62	93	48	52	157	107	68	↑	6

**These are estimated voting rates by field of study, and the numbers we used to calculate the field of study rates.** For an explanation of CIP codes, please see our FAQ.\* There are roughly 8,000 fields of study among U.S. colleges and universities, so we provide rates for condensed categories.

\*<https://tufts.app.box.com/v/idhe-nslve-report-faq>

## By Field of Study

FIELDS	2016			2018			2020			2016-2020 Change (p.p)
	Enrolled	Voted	Rate	Enrolled	Voted	Rate	Enrolled	Voted	Rate	
Foreign Languages, Literatures, and Lingui..	-	-	-	-	-	-	12	-	-	-
Health Professions	1,718	934	54	1,902	899	47	1,852	1,196	65	↑ 10
History	98	57	58	83	48	58	90	63	70	↑ 12
Law Enforcement, Firefighting, and Protec..	266	125	47	239	99	41	272	158	58	↑ 11
Liberal Arts and Sciences, and Humanities	1,304	617	47	884	432	49	495	324	65	↑ 18
Mathematics and Statistics	88	35	40	53	20	38	49	29	59	↑ 19
Mechanic and Repair Technologies/Techni..	70	36	51	118	41	35	209	132	63	↑ 12
Multi/Interdisciplinary Studies	-	-	-	-	-	-	21	16	76	-
Parks, Recreation, Leisure, and Fitness Stu..	-	-	-	-	-	-	99	42	42	-
Psychology	320	162	51	407	191	47	457	290	63	↑ 13
Public Administration and Social Service P..	115	74	64	139	86	62	115	80	70	↑ 5
Social Sciences	-	-	-	-	-	-	24	16	67	-
Visual and Performing Arts	-	-	-	15	-	-	104	71	68	-



# By Field of Study

FIELDS	2016			2018			2020			2016-2020 Change (p.p)
	Enrolled	Voted	Rate	Enrolled	Voted	Rate	Enrolled	Voted	Rate	
Unknown	-	-	-	22	15	68	-	-	-	-

# About This Report

## Thank you for participating in the National Study of Learning, Voting, and Engagement.

Since NSLVE's launch in 2013, nearly 1,200 colleges and universities have signed up to receive their voting rates for the 2012, 2014, 2016, 2018, and 2020 federal elections.

Along with others, your institution's participation in this study has allowed us to build a robust database of over 50 million college student records, about 10 million for each election year, that serve as a foundation for innovative research on college student political learning and engagement in democracy.

NSLVE is a signature initiative of the Institute for Democracy and Higher Education (IDHE) at Tufts University's Jonathan M. Tisch College of Civic Life. The mission of IDHE is to shift college and university priorities and culture to advance political learning, agency, and equity. We achieve our mission through research, resource development, technical assistance, and advocacy.

### About the Data

The voter registration and voting rates in this report reflect the percentage of your institution's students who were eligible to vote and who actually voted in the 2016, 2018, and 2020 elections.

These results are based on enrollment records your institution submitted to the National Student Clearinghouse (NSC) and publicly available voting files collected by L2 Political.

Enrollment lists are adjusted by deducting students under age 18 (at the time of the election), people identified as non-degree seeking and those identified by campuses as "nonresident aliens" (NRAs) (the federal government's category for mostly international students). Unfortunately, not all campuses report NRAs to NSC. For those campuses, we use IPEDS to calculate the number of NRA students on each campus and adjust NSC enrollment numbers to estimate the number of students to remove. We also quality check NRA removals by verifying that there is little to no discrepancy between the number of international students reported by the campus to IPEDS and to NSC. We cannot adjust subgroup analyses absent identification of NRAs verified by the process above. We welcome closer partnerships with individual colleges and universities to provide more accurate rates. For more on the data and the matching process, see our FAQ on Campus Reports.

Middle Georgia State University

Thank you for the work you do to improve your students' political learning and engagement. We hope that you find your NSLVE report useful. For up-to-date news on NSLVE data, resources, and to sign up for our newsletter visit: <https://idhe.tufts.edu>.

References: IDHE encourages report recipients to share this report as broadly as possible, including posting it on the college or university's website. When doing so, please use the following citation: Institute for Democracy & Higher Education: National Study of Learning, Voting and Engagement. (2021). 2016, 2018, and 2020 report for \_\_\_\_\_ [name of institution]. Medford, MA.



Barnum Hall  
163 Packard Ave.  
Medford, MA 02155

tischcollege@tufts.edu  
617.627.3453



Institute for Democracy & Higher Education:  
National Study of Learning, Voting, and Engagement  
Barnum Hall, Medford, MA 02155

Follow Us on Twitter: @TuftsIDHE  
NSLVE@tufts.edu  
617.627.0620