



October 2021

# Student Voting Rates for Miami University

2020 NSLVE Campus Report

**October 2021**

**Dear Colleagues:**

We are pleased to send this tailored report containing your students' voting rates for 2020. This report contains three years of relevant topline data: 2016, 2018, and 2020. As always, we disaggregate the data so you can better identify and address gaps in participation.

College and university students participated in record-breaking numbers in the 2020 election. In 2016, the Average Institutional Voting Rate was 53%. This year, it jumped to 66%. We encourage you to review Democracy Counts 2020, our most recent national report.

As in past years, we urge you to share this report widely and strategically, particularly with faculty who, in 2020, were often the most consistent communicators with students about ever-changing voting conditions and deadlines. We also urge you to review our recommendations for engaging elections to cultivate a robust and healthy campus climate for political engagement, discourse, equity, and participation: Election Imperatives (2019) and the more recent Election Imperatives: A Time of Physical Distancing and Social Action. Since "pervasive political discussions" and attentiveness to the campus culture around speech and academic freedom are among our top recommendations, we direct you to our discussion guides on talking about your NSLVE report, on free speech and inclusion, and on hot topics, our Making Sense of ... guides.

Finally, we always encourage you to work with us. Help us help you get better data by reaching out. Email [IDHE@Tufts.edu](mailto:IDHE@Tufts.edu) for more information. And as always, watch your inbox for our periodic newsletter, IDHE Update, for announcements about upcoming releases and new resources.

Congratulations on engaging your students in the 2020 election. Remember, student political learning is a year-round objective. Elections may be episodic, but student political engagement should not be.

All the Best,  
IDHE Team

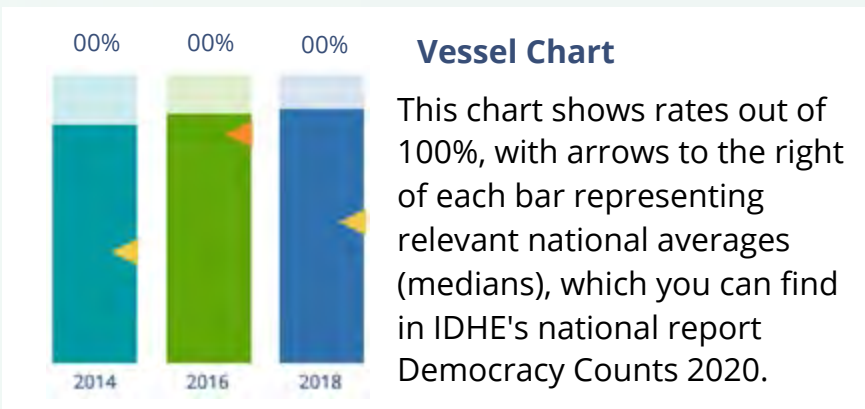


**(Top Row from left) Duy Trinh, Program Administrator; Adam Gismondi, Director of Impact; Dave Brinker, Senior Researcher;**  
**(Bottom Row from left) Nancy Thomas, Director; Norma López, Postdoctoral Scholar; Prabhat Gautam, Data Manager.**

We also want to acknowledge and thank **Syed Golam Mohaimen, M.S. student in Data Science at Tufts University** for his contributions toward the creation of these reports.

# In This Report

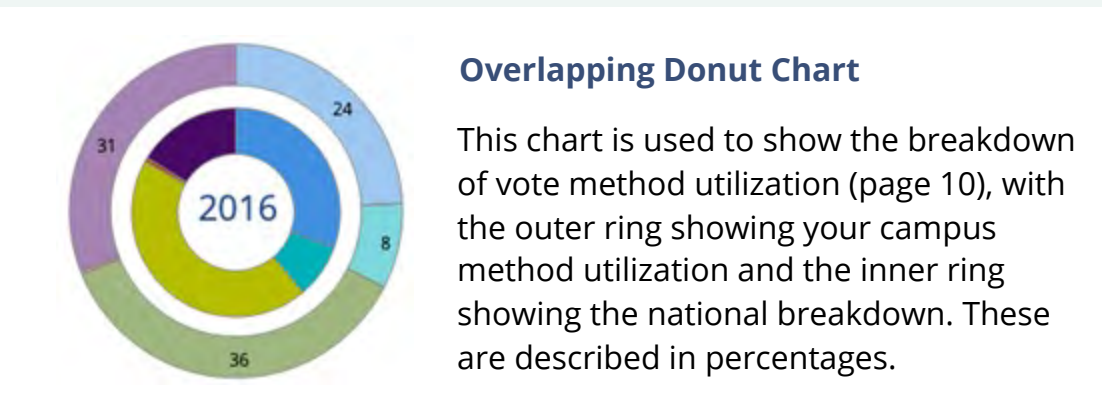
This report presents data on student voter participation rates for your campus. The topline counts on page 5 tells you how many students voted, but we encourage you to look carefully at the data on subsequent pages to learn who voted. Data are presented in the form of vessel charts, overlapping donut charts, and tables.



	2014			2018			2014-2018
	Enrolled	Voted	Rate (%)	Enrolled	Voted	Rate (%)	Change (p.p.)
Asian	-	-	-	-	-	-	-
American Indian/ Alaska Native	-	-	-	-	-	-	-
Black	-	-	-	-	-	-	-
Hispanic	-	-	-	-	-	-	-

Tables

The tables show, on the left-side columns, the numbers of students and the rates from 2016, 2018, and 2020. On the left-side, percentage point (p.p.) changes between 2016 and 2020. A red down arrow indicates a decrease, a green up arrow indicates an increase, and a yellow arrow pointing to the right indicates no change. "-" in these tables indicates that the data is unavailable/missing, or is available for 10 or less students.



# Voting, Registration and Yield Rates

## YOUR INSTITUTION

70.5%

2020 Voting Rate

+10.4

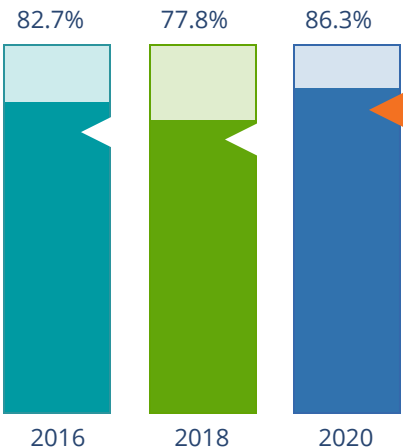
Change From 2016

## ALL INSTITUTIONS

66%

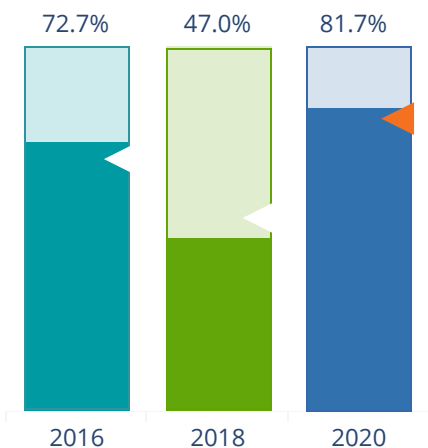
2020 Voting Rate

## REGISTRATION RATE



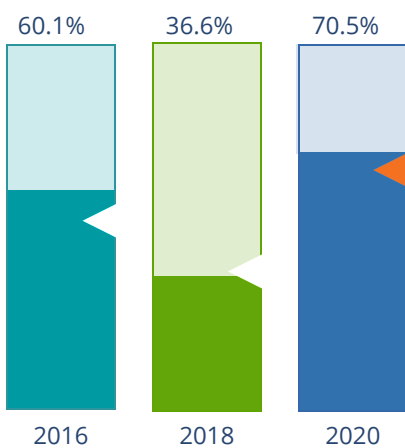
The **Registration Rate** is the percent of your voting-eligible students who registered to vote.

## VOTING RATE OF REGISTERED STUDENTS



The **Voting Rate of Registered Students** is the percent of registered students who voted on Election Day. We often refer to this as the “yield” rate.

## VOTING RATE



The **Voting Rate** is the percentage of eligible students who voted on Election Day. The voting rate is also the product of the registration and yield rates.

# Looking Closer

## Voting and Registration Rates

	2016	2018	2020	2016-2020 Change (p.p.)
Total Student Enrollment	23,285	23,439	22,152	↓ -1,133
(Age under 18/Unknown)	–	–	–	–
(NSC reported non-resident aliens)	2,651	3,041	1,963	↓ -688
(FERPA records blocked)	11	–	–	–
(Non-Degree Seeking Students)	741	455	241	↓ -500
Total eligible voters	19,882	19,933	19,942	↑ 60
Number of students who registered	16,450	15,498	17,218	↑ 768
Number of students who voted	11,953	7,290	14,062	↑ 2,109
Registration Rate %	83	78	86	↑ 4
Voting Rate of Registered Students %	73	47	82	↑ 9
Voting Rate %	60	37	71	↑ 10

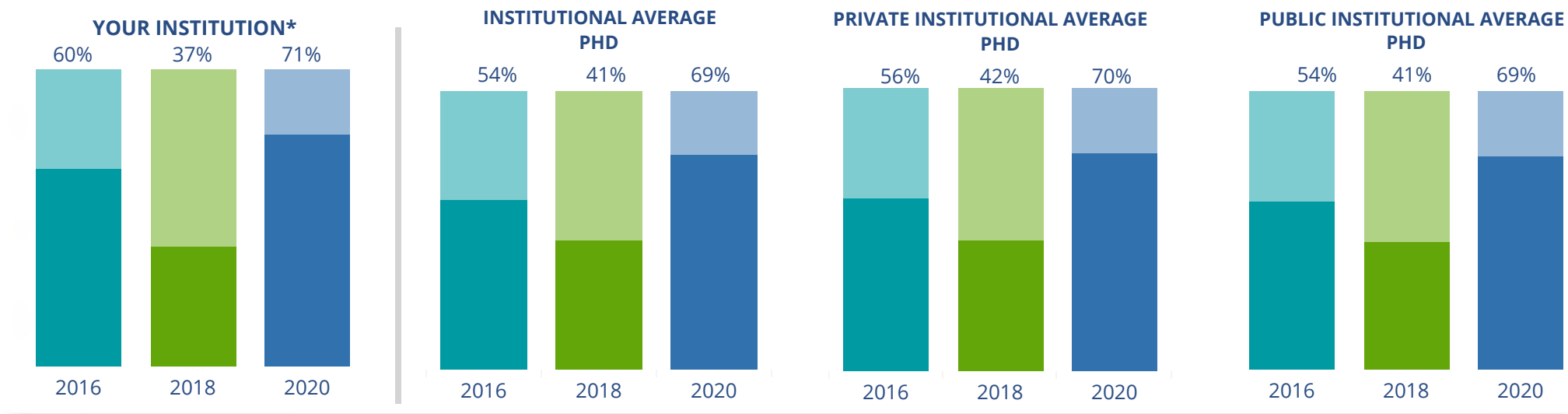
**This page provides the numbers we used to calculate your voting, registration, and yield rates.** The sub-categories under total student enrollment are the adjustments that we make to account for students who are ineligible to vote due to age or citizenship status. We also exclude, when correctly flagged, students who are not pursuing degrees.

We have removed non-resident aliens (international students) based on your institution's enrollment submission to the National Student Clearinghouse. This is indicated by "NSC reported non-resident aliens" on this page.

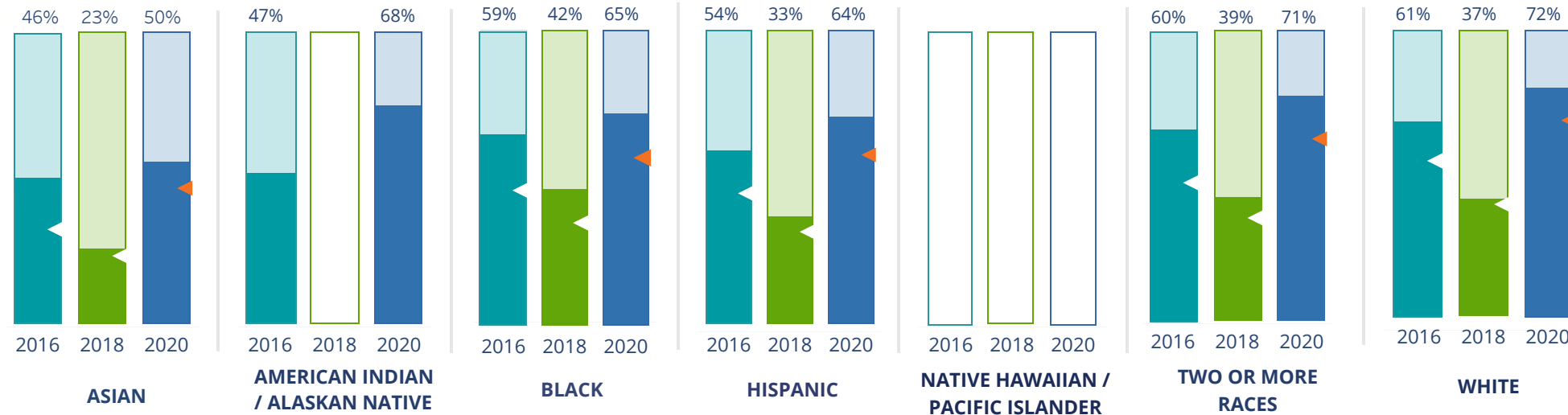
# By Institution Types



These are estimated voting rates of your institution compared to the average voting rates of similar institutions in NSLVE. \*"Your Institution" chart is presented at a different scale.



## By Race / Ethnicity



**These are estimated voting rates for race / ethnicity groups.** These classifications are provided by campuses and are obtained following race reporting procedures\* defined by the National Center for Education Statistics of the Institute of Education Sciences (IES). Please see our FAQ for more detail on why we cannot report national benchmark for some of the demographic groups:

<https://tufts.app.box.com/v/idhe-nsve-report-faq>

If you notice unavailable/missing data in this page, it could mean any of the following for your institution: (i) does not report this data; (ii) did not provide this data in past years; (iii) does not separately submit data for one or more of the demographic groups, or (iv) the data is reported for 10 or fewer students.

\* <https://nces.ed.gov/ipeds/report-your-data/race-ethnicity-collecting-data-for-reporting-purposes>



# Looking Closer

## By Race/Ethnicity

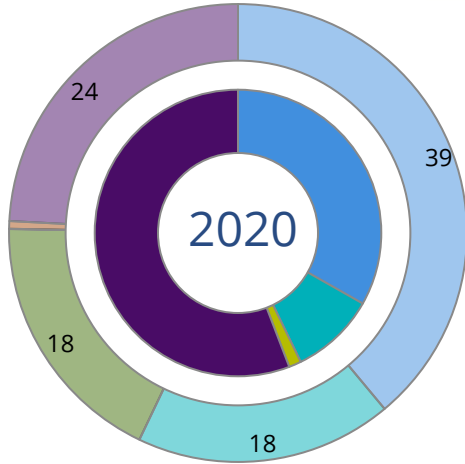
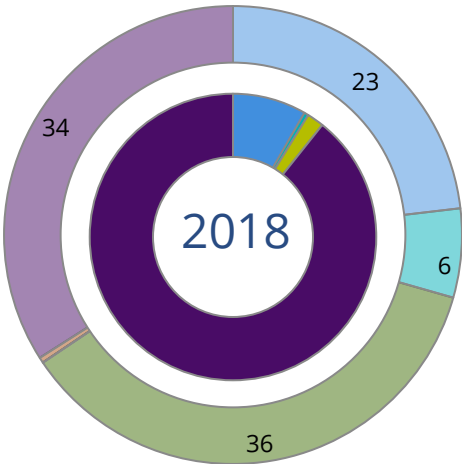
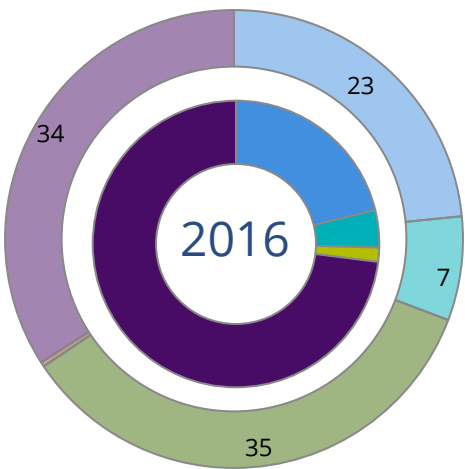
**This page provides the numbers we used to calculate race / ethnicity group voting rates.** We include the counts of students and the change in rates between the two most recent comparable election years. If you notice unavailable/missing data in this page, it could mean any of the following for your institution: (i) does not report this data; (ii) did not provide this data in past years; (iii) does not separately submit data for one or more of the demographic groups, or (iv) the data is reported for 10 or fewer students.

	2016			2018			2020			2016-2020 Change (p.p)
	Enrolled	Voted	Rate	Enrolled	Voted	Rate	Enrolled	Voted	Rate	
Asian	479	218	46	492	115	23	538	271	50	↑ 5
American Indian/ Alaska Native	47	22	47	30	-	-	28	19	68	↑ 21
Black	915	536	59	961	403	42	933	608	65	↑ 7
Hispanic	872	467	54	1,046	348	33	1,131	722	64	↑ 10
Native Hawaiian/ Pacific Islander	-	-	-	12	-	-	12	-	-	-
2 or More Races	695	416	60	824	320	39	869	616	71	↑ 11
White	16,521	10,113	61	16,205	5,981	37	16,215	11,675	72	↑ 11
Race Unknown	347	175	50	363	115	32	216	143	66	↑ 16



# By Voting Method

Not-In-Person Early Vote In-Person Other Provisional Unknown



	2016		2018		2020		2016-2020	
	Voted	Rate	Voted	Rate	Voted	Rate	Change (p.p.)	
Early Vote	499	4	36	1	1,356	10	5	↑
In-Person on Election Day	193	2	135	2	196	1	0	↓
Not-In-Person	2,535	21	606	8	4,673	33	12	↑
Other	–	–	–	–	–	–	–	
Provisional	–	–	–	–	–	–	–	
Voting Method Unknown	8,725	73	6,513	89	7,832	56	-17	↓

These are estimated rates for vote method utilization, the number of students utilizing each method, and the percent of students utilizing each method. Not all U.S. states provide information on vote method; voting method for voter files from these states are classified “Voting Method Unknown.” For a list of these states, see our FAQ. <https://idhe.tufts.edu/nsive/nsive-faq#CampusReports>

# By Age Group

	2016	2018	2020
18-21	58%	32%	70%
22-24	60%	38%	70%
25-29	64%	50%	68%
30-39	70%	60%	76%
40-49	78%	69%	79%
50+	87%	80%	91%

**Voting is habit-forming and young voters will usually continue as voters in subsequent elections.** Also, young voters are more likely to be contacted by campaigns and are visible, and therefore significant, to elected officials. While in the past, we have seen voting rates increase across age groups, in recent cycles, the most significant increases have been among first-time and the youngest voters. Some colleges serve primarily young students, traditionally viewed as students in the 18-21 or 22-24 categories here. Others have much higher numbers of enrolled older undergraduate or graduate students.

# Looking Closer

## By Age Group

Here, we provide the numbers of students in each age category and the voting rates for each group. These are based on the student's age on the day of the election, as calculated by the National Student Clearinghouse using data from student enrollment records.

	2016			2018			2020			2016-2020	
	Enrolled	Voted	Rate	Enrolled	Voted	Rate	Enrolled	Voted	Rate	Change (p.p)	
18-21	14,259	8,302	58	14,607	4,732	32	14,960	10,468	70	↑	12
22-24	2,873	1,732	60	2,740	1,050	38	2,633	1,850	70	↑	10
25-29	1,200	766	64	1,149	571	50	1,055	720	68	↑	4
30-39	925	648	70	846	509	60	774	589	76	↑	6
40-49	418	325	78	393	270	69	316	250	79	↑	1
50+	207	180	87	198	158	80	204	185	91	↑	4

# Looking Closer

## By Sex

	2016			2018			2020			2016-2020	
	Enrolled	Voted	Rate	Enrolled	Voted	Rate	Enrolled	Voted	Rate	Change (p.p)	
Female	10,691	7,076	66	10,639	4,347	41	10,867	8,200	75	↑	9
Male	9,101	4,847	53	9,148	2,925	32	9,052	5,852	65	↑	11

**These are estimated voting rates for sex groups and the numbers we used to calculate their voting rates.** These classifications are provided by campuses and are obtained following the reporting procedures defined by the National Center for Education Statistics (NCES) of the Institute of Education Sciences (IES). Presently, NCES requires institutions to report students as “Male” or “Female” only.\*

If you notice missing data in this page, it could mean any of the following for your institution: (i) does not report this data; (ii) did not provide this data in past years; (iii) does not separately submit data for one or more of the demographic groups, or (iv) the data is reported for 10 or fewer students.

\*<https://surveys.nces.ed.gov/ipeds/public/survey-materials/faq?faqid=11>

# Looking Closer

## By Education Level / Undergraduate Class Year

	2016			2018			2020			2016-2020	
	Enrolled	Voted	Rate (%)	Enrolled	Voted	Rate (%)	Enrolled	Voted	Rate (%)	Change (p.p)	
EDUCATION LEVEL											
Undergraduate	17,715	10,443	59	17,757	6,023	34	17,769	12,413	70	↑	11
Graduate	2,058	1,464	71	2,173	1,266	58	2,172	1,649	76	↑	5
Class Unknown	109	46	42	-	-	-	-	-	-	-	-
CLASS YEAR											
First Year	4,774	56	2,689	4,692	28	1,308	4,570	65	2,976	↑	9
Second Year	4,668	57	2,667	4,672	32	1,495	4,839	70	3,371	↑	13
Upper Level	8,306	62	5,114	8,275	39	3,208	8,369	73	6,082	↑	11
ENROLLMENT STATUS											
Full-time	-	-	-	17,521	5,908	34	17,656	12,337	70	-	-
Part-time	-	-	-	2,412	1,382	57	2,286	1,725	75	-	-

These are estimated voting rates by Education Level (undergraduate/graduate), Class Year, and Enrollment Status (full-time/part-time), and the numbers we used to calculate these rates.

If you notice missing data in this page, it could mean any of the following for your institution: (i) does not report this data; (ii) did not provide this data in past years; (iii) does not separately submit data for one or more of the demographic groups, or (iv) the data is reported for 10 or fewer students.

## By Field of Study

FIELDS	2016			2018			2020			2016-2020 RateChange (p.p)
	Enrolled	Voted	Rate	Enrolled	Voted	Rate	Enrolled	Voted	Rate	
Architecture	242	139	57	265	80	30	319	219	69	↑ 11
Area, Ethnic, Cultural, and Gender Studies	101	67	66	108	49	45	67	54	81	↑ 14
Biological and Biomedical Sciences	1,929	1,227	64	1,951	847	43	2,000	1,497	75	↑ 11
Business, Management, and Marketing	3,683	2,078	56	3,876	1,085	28	4,116	2,739	67	↑ 10
Communication and Journalism	1,077	607	56	1,085	375	35	1,076	776	72	↑ 16
Computer and Information Sciences	533	289	54	648	224	35	689	444	64	↑ 10
Education	1,871	1,337	71	1,882	963	51	1,777	1,427	80	↑ 9

**These are estimated voting rates by field of study, and the numbers we used to calculate the field of study rates.** For an explanation of CIP codes, please see our FAQ.\* There are roughly 8,000 fields of study among U.S. colleges and universities, so we provide rates for condensed categories.

\*<https://tufts.app.box.com/v/idhe-nslve-report-faq>

# By Field of Study

FIELDS	2016			2018			2020			2016-2020 Change (p.p)
	Enrolled	Voted	Rate	Enrolled	Voted	Rate	Enrolled	Voted	Rate	
Engineering and Engineering Technologies	1,565	881	56	1,466	480	33	1,387	920	66	↑ 10
English Language and Literature	456	305	67	457	227	50	426	318	75	↑ 8
Family and Consumer/Human Sciences	65	36	55	42	14	33	52	40	77	↑ 22
Foreign Languages, Literatures, and Lingui..	157	118	75	141	76	54	110	83	75	↑ 0
Health Professions	1,069	672	63	1,092	362	33	1,221	894	73	↑ 10
History	144	101	70	141	61	43	152	112	74	↑ 4
Law Enforcement, Firefighting, and Protec..	243	164	67	227	101	44	196	128	65	↓ -2
Liberal Arts and Sciences, and Humanities	1,955	1,059	54	1,523	477	31	1,236	759	61	↑ 7
Mathematics and Statistics	230	135	59	250	94	38	243	170	70	↑ 11
Multi/Interdisciplinary Studies	83	59	71	76	35	46	89	67	75	↑ 4
Natural Resources and Conservation	31	20	65	17	–	–	28	22	79	↑ 14
Parks, Recreation, Leisure, and Fitness Stu..	1,130	579	51	1,198	281	23	1,150	736	64	↑ 13
Philosophy and Religious Studies	48	30	63	71	26	37	33	23	70	↑ 7
Physical Sciences	325	208	64	319	124	39	296	225	76	↑ 12



## By Field of Study

FIELDS	2016			2018			2020			2016-2020	
	Enrolled	Voted	Rate	Enrolled	Voted	Rate	Enrolled	Voted	Rate	Change (p.p)	
Psychology	858	519	60	991	360	36	1,104	772	70	↑	9
Public Administration and Social Service Professions	294	196	67	275	135	49	286	210	73	↑	7
Social Sciences	1,244	775	62	1,262	565	45	1,274	974	76	↑	14
Visual and Performing Arts	311	216	69	361	160	44	411	304	74	↑	5
Unknown	238	136	57	209	81	39	204	149	73	↑	16

# About This Report

## Thank you for participating in the National Study of Learning, Voting, and Engagement.

Since NSLVE's launch in 2013, nearly 1,200 colleges and universities have signed up to receive their voting rates for the 2012, 2014, 2016, 2018, and 2020 federal elections.

Along with others, your institution's participation in this study has allowed us to build a robust database of over 50 million college student records, about 10 million for each election year, that serve as a foundation for innovative research on college student political learning and engagement in democracy.

NSLVE is a signature initiative of the Institute for Democracy and Higher Education (IDHE) at Tufts University's Jonathan M. Tisch College of Civic Life. The mission of IDHE is to shift college and university priorities and culture to advance political learning, agency, and equity. We achieve our mission through research, resource development, technical assistance, and advocacy.

### About the Data

The voter registration and voting rates in this report reflect the percentage of your institution's students who were eligible to vote and who actually voted in the 2016, 2018, and 2020 elections.

These results are based on enrollment records your institution submitted to the National Student Clearinghouse (NSC) and publicly available voting files collected by L2 Political.

Enrollment lists are adjusted by deducting students under age 18 (at the time of the election), people identified as non-degree seeking and those identified by campuses as "nonresident aliens" (NRAs) (the federal government's category for mostly international students). Unfortunately, not all campuses report NRAs to NSC. For those campuses, we use IPEDS to calculate the number of NRA students on each campus and adjust NSC enrollment numbers to estimate the number of students to remove. We also quality check NRA removals by verifying that there is little to no discrepancy between the number of international students reported by the campus to IPEDS and to NSC. We cannot adjust subgroup analyses absent identification of NRAs verified by the process above. We welcome closer partnerships with individual colleges and universities to provide more accurate rates. For more on the data and the matching process, see our FAQ on Campus Reports.

Miami University

Thank you for the work you do to improve your students' political learning and engagement. We hope that you find your NSLVE report useful. For up-to-date news on NSLVE data, resources, and to sign up for our newsletter visit: <https://idhe.tufts.edu>.

References: IDHE encourages report recipients to share this report as broadly as possible, including posting it on the college or university's website. When doing so, please use the following citation: Institute for Democracy & Higher Education: National Study of Learning, Voting and Engagement. (2021). 2016, 2018, and 2020 report for \_\_\_\_\_ [name of institution]. Medford, MA.



Barnum Hall  
163 Packard Ave.  
Medford, MA 02155

tischcollege@tufts.edu  
617.627.3453



Institute for Democracy & Higher Education:  
National Study of Learning, Voting, and Engagement  
Barnum Hall, Medford, MA 02155

Follow Us on Twitter: @TuftsIDHE  
NSLVE@tufts.edu  
617.627.0620