



October 2021

# **Student Voting Rates for Miami Dade College**

## 2020 NSLVE Campus Report

**October 2021**

**Dear Colleagues:**

We are pleased to send this tailored report containing your students' voting rates for 2020. This report contains three years of relevant topline data: 2016, 2018, and 2020. As always, we disaggregate the data so you can better identify and address gaps in participation.

College and university students participated in record-breaking numbers in the 2020 election. In 2016, the Average Institutional Voting Rate was 53%. This year, it jumped to 66%. We encourage you to review Democracy Counts 2020, our most recent national report.

As in past years, we urge you to share this report widely and strategically, particularly with faculty who, in 2020, were often the most consistent communicators with students about ever-changing voting conditions and deadlines. We also urge you to review our recommendations for engaging elections to cultivate a robust and healthy campus climate for political engagement, discourse, equity, and participation: Election Imperatives (2019) and the more recent Election Imperatives: A Time of Physical Distancing and Social Action. Since "pervasive political discussions" and attentiveness to the campus culture around speech and academic freedom are among our top recommendations, we direct you to our discussion guides on talking about your NSLVE report, on free speech and inclusion, and on hot topics, our Making Sense of ... guides.

Finally, we always encourage you to work with us. Help us help you get better data by reaching out. Email [IDHE@Tufts.edu](mailto:IDHE@Tufts.edu) for more information. And as always, watch your inbox for our periodic newsletter, IDHE Update, for announcements about upcoming releases and new resources.

Congratulations on engaging your students in the 2020 election. Remember, student political learning is a year-round objective. Elections may be episodic, but student political engagement should not be.

All the Best,  
IDHE Team



**(Top Row from left) Duy Trinh, Program Administrator; Adam Gismondi, Director of Impact; Dave Brinker, Senior Researcher;**  
**(Bottom Row from left) Nancy Thomas, Director; Norma López, Postdoctoral Scholar; Prabhat Gautam, Data Manager.**

We also want to acknowledge and thank **Syed Golam Mohaimen, M.S. student in Data Science at Tufts University** for his contributions toward the creation of these reports.

# In This Report

This report presents data on student voter participation rates for your campus. The topline counts on page 5 tells you how many students voted, but we encourage you to look carefully at the data on subsequent pages to learn who voted. Data are presented in the form of vessel charts, overlapping donut charts, and tables.



Vessel Chart

This chart shows rates out of 100%, with arrows to the right of each bar representing relevant national averages (medians), which you can find in IDHE's national report Democracy Counts 2020.

	2014			2018			2014-2018 Change (p.p.)
	Enrolled	Voted	Rate (%)	Enrolled	Voted	Rate (%)	
Asian	-	-	-	-	-	-	-
American Indian/ Alaska Native	-	-	-	-	-	-	-
Black	-	-	-	-	-	-	-
Hispanic	-	-	-	-	-	-	-

## Tables

The tables show, on the left-side columns, the numbers of students and the rates from 2016, 2018, and 2020. On the left-side, percentage point (p.p.) changes between 2016 and 2020. A red down arrow indicates a decrease, a green up arrow indicates an increase, and a yellow arrow pointing to the right indicates no change. "-" in these tables indicates that the data is unavailable/missing, or is available for 10 or less students.



Overlapping Donut Chart

This chart is used to show the breakdown of vote method utilization (page 10), with the outer ring showing your campus method utilization and the inner ring showing the national breakdown. These are described in percentages.

# Voting, Registration and Yield Rates

YOUR INSTITUTION

56.0%

2020 Voting Rate

+8.7

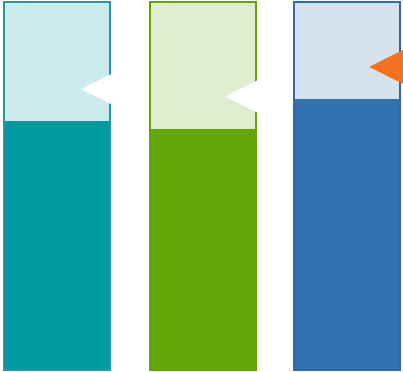
Change From 2016

ALL INSTITUTIONS

66%

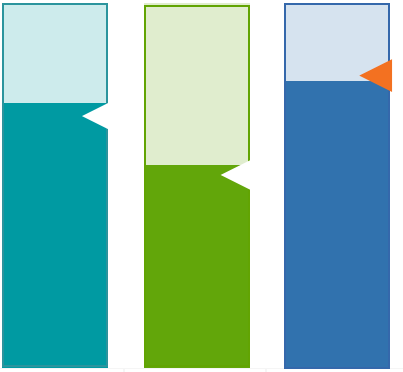
2020 Voting Rate

REGISTRATION RATE

66.0%	64.2%	71.9%
		
2016	2018	2020

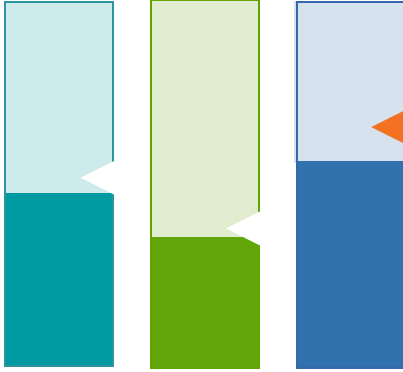
The **Registration Rate** is the percent of your voting-eligible students who registered to vote.

VOTING RATE OF REGISTERED STUDENTS

71.8%	54.9%	77.9%
		
2016	2018	2020

The **Voting Rate of Registered Students** is the percent of registered students who voted on Election Day. We often refer to this as the “yield” rate.

VOTING RATE

47.3%	35.3%	56.0%
		
2016	2018	2020

The **Voting Rate** is the percentage of eligible students who voted on Election Day. The voting rate is also the product of the registration and yield rates.

# Looking Closer

## Voting and Registration Rates

	2016	2018	2020	2016-2020 Change (p.p.)
Total Student Enrollment	57,196	56,913	48,789	↓ -8,408
(Age under 18/Unknown)	15	113	154	↑ 139
(IPEDS estimated non-resident aliens)	3,761	3,819	3,199	↓ -561
(FERPA records blocked)	54	166	153	↑ 99
(Non-Degree Seeking Students)	725	913	1,089	↑ 364
Total eligible voters	52,642	51,902	44,194	↓ -8,448
Number of students who registered	34,720	33,330	31,770	↓ -2,950
Number of students who voted	24,924	18,306	24,748	↓ -176
Registration Rate %	66	64	72	↑ 6
Voting Rate of Registered Students %	72	55	78	↑ 6
Voting Rate %	47	35	56	↑ 9

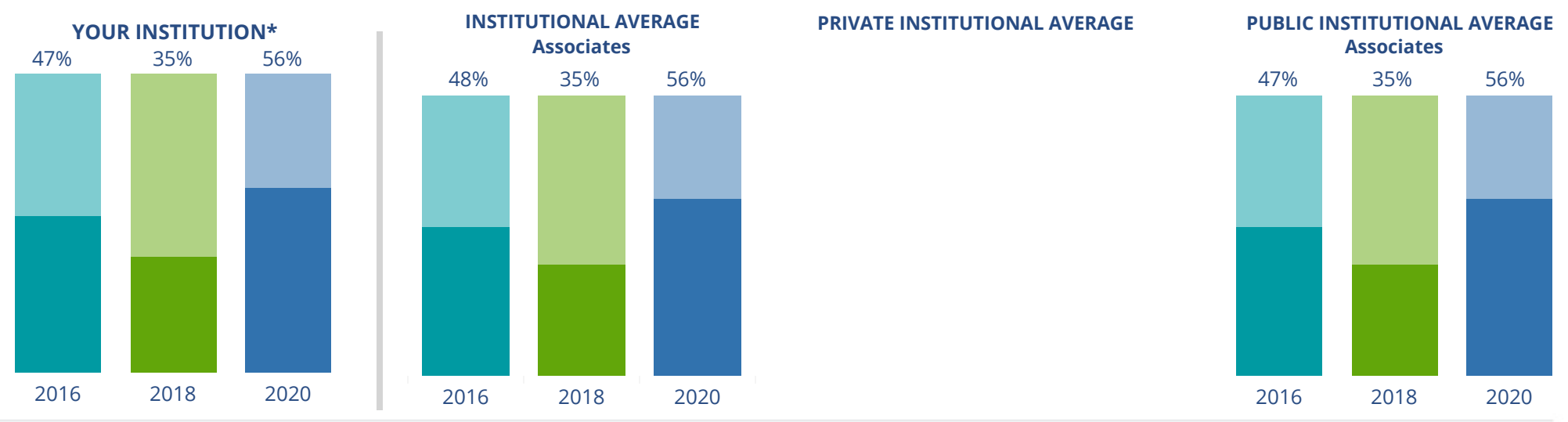
This page provides the numbers we used to calculate your voting, registration, and yield rates. The sub-categories under total student enrollment are the adjustments that we make to account for students who are ineligible to vote due to age or citizenship status. We also exclude, when correctly flagged, students who are not pursuing degrees.

We use IPEDS-derived estimates of NRAs when institutions do not submit non-resident alien status data to NSC, or we cannot verify the accuracy of the reported counts. This estimate is given by "IPEDS estimated non-resident aliens" on this page. If you believe the number of international students reported on this report is incorrect, you can manually adjust your institution's voting rates by using our recalculation tool. <https://id-he.tufts.edu/nsive/nsive-recalculation-tool>.

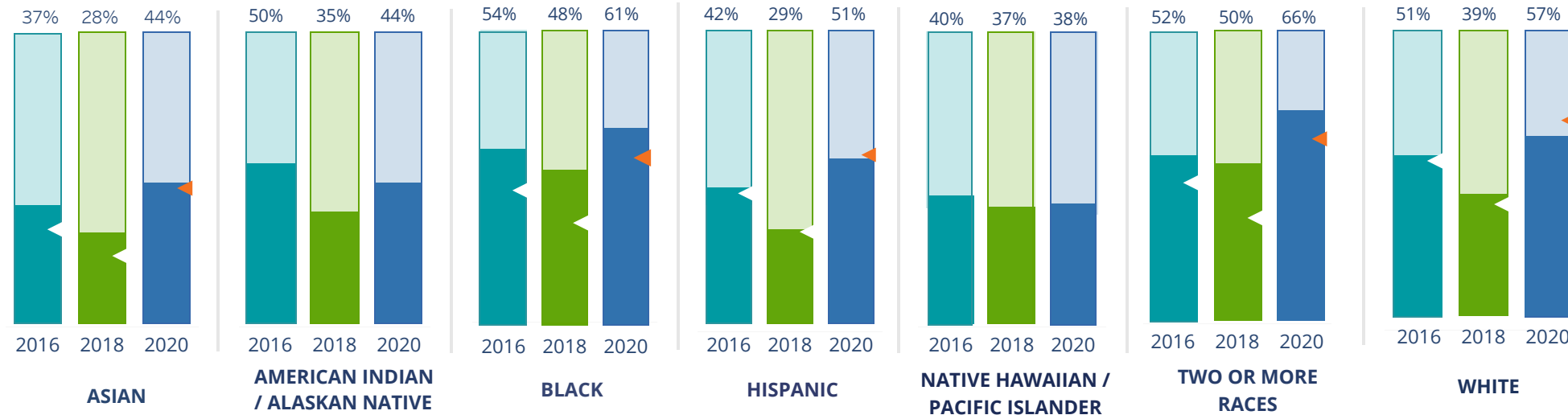
# By Institution Types



These are estimated voting rates of your institution compared to the average voting rates of similar institutions in NSLVE. \*"Your Institution" chart is presented at a different scale.



## By Race / Ethnicity



**These are estimated voting rates for race / ethnicity groups.** These classifications are provided by campuses and are obtained following race reporting procedures\* defined by the National Center for Education Statistics of the Institute of Education Sciences (IES). Please see our FAQ for more detail on why we cannot report national benchmark for some of the demographic groups:

<https://tufts.app.box.com/v/idhe-nsve-report-faq>

If you notice unavailable/missing data in this page, it could mean any of the following for your institution: (i) does not report this data; (ii) did not provide this data in past years; (iii) does not separately submit data for one or more of the demographic groups, or (iv) the data is reported for 10 or fewer students.

\* <https://nces.ed.gov/ipeds/report-your-data/race-ethnicity-collecting-data-for-reporting-purposes>



# Looking Closer

## By Race/Ethnicity

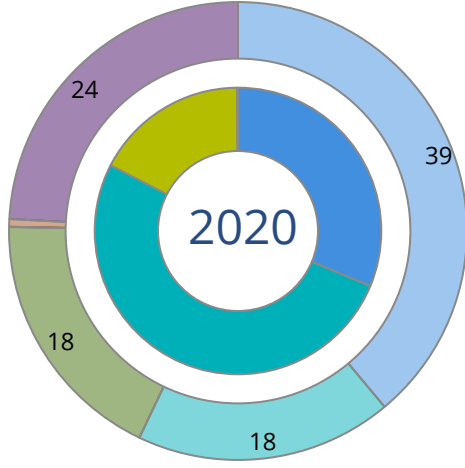
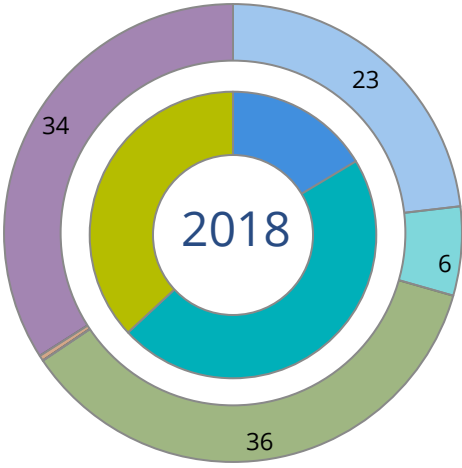
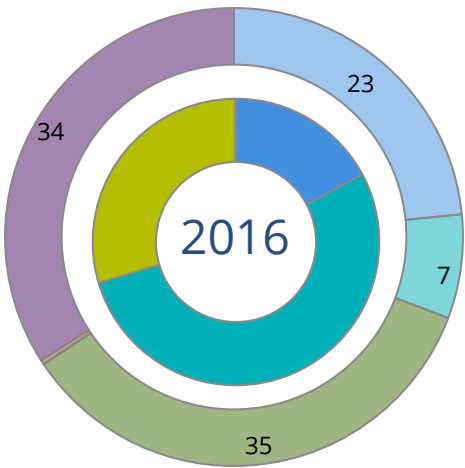
**This page provides the numbers we used to calculate race / ethnicity group voting rates.** We include the counts of students and the change in rates between the two most recent comparable election years. If you notice unavailable/missing data in this page, it could mean any of the following for your institution: (i) does not report this data; (ii) did not provide this data in past years; (iii) does not separately submit data for one or more of the demographic groups, or (iv) the data is reported for 10 or fewer students.

	2016			2018			2020			2016-2020 Change (p.p)
	Enrolled	Voted	Rate	Enrolled	Voted	Rate	Enrolled	Voted	Rate	
Asian	617	226	37	570	162	28	512	223	44	↑ 7
American Indian/ Alaska Native	52	26	50	46	16	35	32	14	44	↓ -6
Black	8,510	4,620	54	7,956	3,818	48	6,870	4,163	61	↑ 6
Hispanic	41,419	17,385	42	41,007	12,057	29	35,802	18,214	51	↑ 9
Native Hawaiian/ Pacific Islander	35	14	40	30	11	37	29	11	38	↓ -2
2 or More Races	427	221	52	877	435	50	581	384	66	↑ 14
White	3,514	1,791	51	3,532	1,362	39	2,528	1,442	57	↑ 6
Race Unknown	1,615	641	40	1,406	445	32	715	297	42	↑ 2



# By Voting Method

Not-In-Person Early Vote In-Person Other Provisional Unknown



	2016		2018		2020		2016-2020	
	Voted	Rate	Voted	Rate	Voted	Rate	Change (p.p.)	
Early Vote	13,272	53	8,540	47	12,700	51	-2	↓
In-Person on Election Day	7,348	30	6,757	37	4,271	17	-12	↓
Not-In-Person	4,287	17	3,008	16	7,756	31	14	↑
Other	-	-	-	-	-	-	-	
Provisional	16	0	-	-	-	-	-	
Voting Method Unknown	-	-	-	-	21	0	-	

These are estimated rates for vote method utilization, the number of students utilizing each method, and the percent of students utilizing each method. Not all U.S. states provide information on vote method; voting method for voter files from these states are classified "Voting Method Unknown." For a list of these states, see our FAQ. <https://idhe.tufts.edu/nsive/nsive-faq#CampusReports>

## By Age Group

	2016	2018	2020
18-21	44%	31%	51%
22-24	41%	32%	49%
25-29	42%	32%	52%
30-39	48%	36%	58%
40-49	54%	43%	65%
50+	62%	55%	68%

**Voting is habit-forming and young voters will usually continue as voters in subsequent elections.** Also, young voters are more likely to be contacted by campaigns and are visible, and therefore significant, to elected officials. While in the past, we have seen voting rates increase across age groups, in recent cycles, the most significant increases have been among first-time and the youngest voters. Some colleges serve primarily young students, traditionally viewed as students in the 18-21 or 22-24 categories here. Others have much higher numbers of enrolled older undergraduate or graduate students.

# Looking Closer

## By Age Group

Here, we provide the numbers of students in each age category and the voting rates for each group. These are based on the student’s age on the day of the election, as calculated by the National Student Clearinghouse using data from student enrollment records.

	2016			2018			2020			2016-2020	
	Enrolled	Voted	Rate	Enrolled	Voted	Rate	Enrolled	Voted	Rate	Change (p.p)	
18-21	28,634	12,485	44	29,032	9,063	31	25,260	12,886	51	↑	7
22-24	9,790	4,043	41	9,368	3,004	32	7,613	3,743	49	↑	8
25-29	7,765	3,246	42	7,668	2,454	32	6,209	3,252	52	↑	11
30-39	5,836	2,785	48	5,691	2,055	36	5,202	3,025	58	↑	10
40-49	2,728	1,471	54	2,446	1,063	43	1,894	1,234	65	↑	11
50+	1,436	894	62	1,219	667	55	891	608	68	↑	6

# Looking Closer

## By Sex

	2016			2018			2020			2016-2020	
	Enrolled	Voted	Rate	Enrolled	Voted	Rate	Enrolled	Voted	Rate	Change (p.p)	
Female	32,041	14,848	46	31,640	10,912	34	27,865	14,915	54	↑	7
Male	24,118	10,069	42	23,774	7,391	31	19,199	9,830	51	↑	9

**These are estimated voting rates for sex groups and the numbers we used to calculate their voting rates.** These classifications are provided by campuses and are obtained following the reporting procedures defined by the National Center for Education Statistics (NCES) of the Institute of Education Sciences (IES). Presently, NCES requires institutions to report students as “Male” or “Female” only.\*

If you notice missing data in this page, it could mean any of the following for your institution: (i) does not report this data; (ii) did not provide this data in past years; (iii) does not separately submit data for one or more of the demographic groups, or (iv) the data is reported for 10 or fewer students.

\*<https://surveys.nces.ed.gov/ipeds/public/survey-materials/faq?faqid=11>

# Looking Closer

## By Education Level / Undergraduate Class Year

	2016			2018			2020			2016-2020	
	Enrolled	Voted	Rate (%)	Enrolled	Voted	Rate (%)	Enrolled	Voted	Rate (%)	Change (p.p)	
EDUCATION LEVEL											
Undergraduate	53,766	23,560	44	53,139	17,381	33	45,484	23,843	52	↑	9
Graduate	-	-	-	-	-	-	-	-	-	-	-
Class Unknown	2,423	1,364	56	2,285	925	40	1,585	905	57	↑	1
CLASS YEAR											
First Year	24,771	40	9,894	24,899	28	6,968	19,096	48	9,220	↑	8
Second Year	25,593	46	11,682	23,535	35	8,336	20,845	54	11,198	↑	8
Upper Level	2,983	59	1,753	2,446	48	1,162	2,416	64	1,554	↑	6
ENROLLMENT STATUS											
Full-time	21,775	9,165	42	22,381	6,849	31	19,865	10,037	51	↑	8
Part-time	34,414	15,759	46	33,043	11,457	35	27,204	14,711	54	↑	8

These are estimated voting rates by Education Level (undergraduate/graduate), Class Year, and Enrollment Status (full-time/part-time), and the numbers we used to calculate these rates.

If you notice missing data in this page, it could mean any of the following for your institution: (i) does not report this data; (ii) did not provide this data in past years; (iii) does not separately submit data for one or more of the demographic groups, or (iv) the data is reported for 10 or fewer students.

## By Field of Study

FIELDS	2016			2018			2020			2016-2020
	Enrolled	Voted	Rate	Enrolled	Voted	Rate	Enrolled	Voted	Rate	Change (p.p)
Architecture	52	18	35	58	11	19	55	26	47	↑ 13
Biological and Biomedical Sciences	276	129	47	291	91	31	160	92	58	↑ 11
Business, Management, and Marketing	2,421	1,192	49	2,570	967	38	2,602	1,450	56	↑ 6
Communications Technologies/Technicians	99	56	57	342	150	44	306	176	58	↑ 1
Computer and Information Sciences	1,265	584	46	936	308	33	1,008	544	54	↑ 8
Education	872	512	59	688	329	48	666	437	66	↑ 7
Engineering and Engineering Technologies	494	192	39	473	127	27	399	193	48	↑ 10

**These are estimated voting rates by field of study, and the numbers we used to calculate the field of study rates.** For an explanation of CIP codes, please see our FAQ.\* There are roughly 8,000 fields of study among U.S. colleges and universities, so we provide rates for condensed categories.

\*<https://tufts.app.box.com/v/idhe-nslve-report-faq>

## By Field of Study

FIELDS	2016			2018			2020			2016-2020 Change (p.p)
	Enrolled	Voted	Rate	Enrolled	Voted	Rate	Enrolled	Voted	Rate	
Family and Consumer/Human Sciences	-	-	-	-	-	-	-	-	-	-
Health Professions	8,796	3,838	44	8,620	2,746	32	7,592	3,971	52	↑ 9
Law Enforcement, Firefighting, and Protec..	967	487	50	1,045	417	40	1,032	597	58	↑ 7
Legal Professions and Studies	277	135	49	262	104	40	199	92	46	↓ -3
Liberal Arts and Sciences, and Humanities	36,285	15,452	43	36,352	11,603	32	29,393	15,121	51	↑ 9
Personal and Culinary Services	490	256	52	425	163	38	352	203	58	↑ 5
Science Technologies/Technicians	-	-	-	-	-	-	117	59	50	-
Visual and Performing Arts	1,071	581	54	1,248	523	42	1,267	744	59	↑ 4
Unknown	2,490	1,370	55	1,757	670	38	1,589	906	57	↑ 2



# About This Report

## Thank you for participating in the National Study of Learning, Voting, and Engagement.

Since NSLVE's launch in 2013, nearly 1,200 colleges and universities have signed up to receive their voting rates for the 2012, 2014, 2016, 2018, and 2020 federal elections.

Along with others, your institution's participation in this study has allowed us to build a robust database of over 50 million college student records, about 10 million for each election year, that serve as a foundation for innovative research on college student political learning and engagement in democracy.

NSLVE is a signature initiative of the Institute for Democracy and Higher Education (IDHE) at Tufts University's Jonathan M. Tisch College of Civic Life. The mission of IDHE is to shift college and university priorities and culture to advance political learning, agency, and equity. We achieve our mission through research, resource development, technical assistance, and advocacy.

### About the Data

The voter registration and voting rates in this report reflect the percentage of your institution's students who were eligible to vote and who actually voted in the 2016, 2018, and 2020 elections.

These results are based on enrollment records your institution submitted to the National Student Clearinghouse (NSC) and publicly available voting files collected by L2 Political.

Enrollment lists are adjusted by deducting students under age 18 (at the time of the election), people identified as non-degree seeking and those identified by campuses as "nonresident aliens" (NRAs) (the federal government's category for mostly international students). Unfortunately, not all campuses report NRAs to NSC. For those campuses, we use IPEDS to calculate the number of NRA students on each campus and adjust NSC enrollment numbers to estimate the number of students to remove. We also quality check NRA removals by verifying that there is little to no discrepancy between the number of international students reported by the campus to IPEDS and to NSC. We cannot adjust subgroup analyses absent identification of NRAs verified by the process above. We welcome closer partnerships with individual colleges and universities to provide more accurate rates. For more on the data and the matching process, see our FAQ on Campus Reports.

Miami Dade College

Thank you for the work you do to improve your students' political learning and engagement. We hope that you find your NSLVE report useful. For up-to-date news on NSLVE data, resources, and to sign up for our newsletter visit: <https://idhe.tufts.edu>.

References: IDHE encourages report recipients to share this report as broadly as possible, including posting it on the college or university's website. When doing so, please use the following citation: Institute for Democracy & Higher Education: National Study of Learning, Voting and Engagement. (2021). 2016, 2018, and 2020 report for \_\_\_\_\_ [name of institution]. Medford, MA.



Barnum Hall  
163 Packard Ave.  
Medford, MA 02155

tischcollege@tufts.edu  
617.627.3453



Institute for Democracy & Higher Education:  
National Study of Learning, Voting, and Engagement  
Barnum Hall, Medford, MA 02155

Follow Us on Twitter: @TuftsIDHE  
NSLVE@tufts.edu  
617.627.0620