



October 2021

Student Voting Rates for Loyola University Chicago

2020 NSLVE Campus Report

October 2021

Dear Colleagues:

We are pleased to send this tailored report containing your students' voting rates for 2020. This report contains three years of relevant topline data: 2016, 2018, and 2020. As always, we disaggregate the data so you can better identify and address gaps in participation.

College and university students participated in record-breaking numbers in the 2020 election. In 2016, the Average Institutional Voting Rate was 53%. This year, it jumped to 66%. We encourage you to review Democracy Counts 2020, our most recent national report.

As in past years, we urge you to share this report widely and strategically, particularly with faculty who, in 2020, were often the most consistent communicators with students about ever-changing voting conditions and deadlines. We also urge you to review our recommendations for engaging elections to cultivate a robust and healthy campus climate for political engagement, discourse, equity, and participation: Election Imperatives (2019) and the more recent Election Imperatives: A Time of Physical Distancing and Social Action. Since "pervasive political discussions" and attentiveness to the campus culture around speech and academic freedom are among our top recommendations, we direct you to our discussion guides on talking about your NSLVE report, on free speech and inclusion, and on hot topics, our Making Sense of ... guides.

Finally, we always encourage you to work with us. Help us help you get better data by reaching out. Email IDHE@Tufts.edu for more information. And as always, watch your inbox for our periodic newsletter, IDHE Update, for announcements about upcoming releases and new resources.

Congratulations on engaging your students in the 2020 election. Remember, student political learning is a year-round objective. Elections may be episodic, but student political engagement should not be.

All the Best,
IDHE Team



(Top Row from left) Duy Trinh, Program Administrator; Adam Gismondi, Director of Impact; Dave Brinker, Senior Researcher;
(Bottom Row from left) Nancy Thomas, Director; Norma López, Postdoctoral Scholar; Prabhat Gautam, Data Manager.

We also want to acknowledge and thank **Syed Golam Mohaimen, M.S. student in Data Science at Tufts University** for his contributions toward the creation of these reports.

In This Report

This report presents data on student voter participation rates for your campus. The topline counts on page 5 tells you how many students voted, but we encourage you to look carefully at the data on subsequent pages to learn who voted. Data are presented in the form of vessel charts, overlapping donut charts, and tables.



	2014			2018			2014-2018 Change (p.p.)
	Enrolled	Voted	Rate (%)	Enrolled	Voted	Rate (%)	
Asian	-	-	-	-	-	-	-
American Indian/ Alaska Native	-	-	-	-	-	-	-
Black	-	-	-	-	-	-	-
Hispanic	-	-	-	-	-	-	-

Tables

The tables show, on the left-side columns, the numbers of students and the rates from 2016, 2018, and 2020. On the left-side, percentage point (p.p.) changes between 2016 and 2020. A red down arrow indicates a decrease, a green up arrow indicates an increase, and a yellow arrow pointing to the right indicates no change. "-" in these tables indicates that the data is unavailable/missing, or is available for 10 or less students.



Voting, Registration and Yield Rates

YOUR INSTITUTION

72.9%

2020 Voting Rate

+15.9

Change From 2016

ALL INSTITUTIONS

66%

2020 Voting Rate

REGISTRATION RATE

Year	Rate
2016	82.1%
2018	75.0%
2020	85.0%

The **Registration Rate** is the percent of your voting-eligible students who registered to vote.

VOTING RATE OF REGISTERED STUDENTS

Year	Rate
2016	69.5%
2018	53.4%
2020	85.8%

The **Voting Rate of Registered Students** is the percent of registered students who voted on Election Day. We often refer to this as the “yield” rate.

VOTING RATE

Year	Rate
2016	57.0%
2018	40.1%
2020	72.9%

The **Voting Rate** is the percentage of eligible students who voted on Election Day. The voting rate is also the product of the registration and yield rates.

Looking Closer

Voting and Registration Rates

	2016	2018	2020	2016-2020 Change (p.p.)
Total Student Enrollment	14,998	16,944	16,892	↑ 1,894
(Age under 18/Unknown)	–	–	18	–
(IPEDS estimated non-resident aliens)	866	936	667	↓ -199
(FERPA records blocked)	629	444	289	↓ -340
(Non-Degree Seeking Students)	–	418	–	–
Total eligible voters	13,503	15,143	15,918	↑ 2,415
Number of students who registered	11,082	11,354	13,523	↑ 2,441
Number of students who voted	7,697	6,067	11,605	↑ 3,908
Registration Rate %	82	75	85	↑ 3
Voting Rate of Registered Students %	69	53	86	↑ 16
Voting Rate %	57	40	73	↑ 16

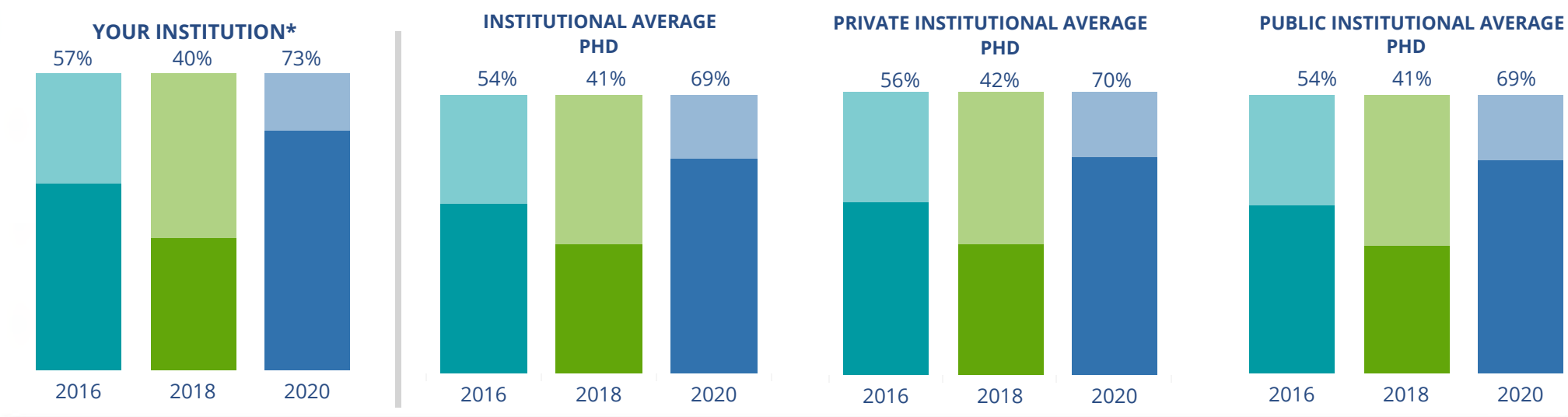
This page provides the numbers we used to calculate your voting, registration, and yield rates. The sub-categories under total student enrollment are the adjustments that we make to account for students who are ineligible to vote due to age or citizenship status. We also exclude, when correctly flagged, students who are not pursuing degrees.

We use IPEDS-derived estimates of NRAs when institutions do not submit non-resident alien status data to NSC, or we cannot verify the accuracy of the reported counts. This estimate is given by "IPEDS estimated non-resident aliens" on this page. If you believe the number of international students reported on this report is incorrect, you can manually adjust your institution's voting rates by using our recalculation tool. <https://id-he.tufts.edu/nsive/nsive-recalculation-tool>.

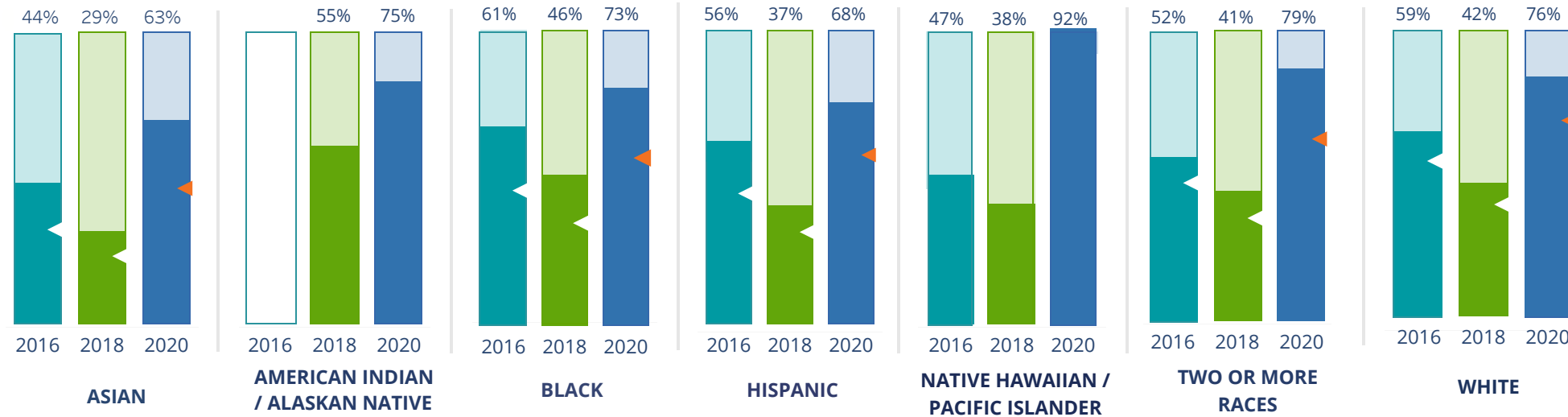
By Institution Types



These are estimated voting rates of your institution compared to the average voting rates of similar institutions in NSLVE. *"Your Institution" chart is presented at a different scale.



By Race / Ethnicity



These are estimated voting rates for race / ethnicity groups. These classifications are provided by campuses and are obtained following race reporting procedures* defined by the National Center for Education Statistics of the Institute of Education Sciences (IES). Please see our FAQ for more detail on why we cannot report national benchmark for some of the demographic groups:

<https://tufts.app.box.com/v/idhe-nsive-report-faq>

If you notice unavailable/missing data in this page, it could mean any of the following for your institution: (i) does not report this data; (ii) did not provide this data in past years; (iii) does not separately submit data for one or more of the demographic groups, or (iv) the data is reported for 10 or fewer students.

* <https://nces.ed.gov/ipeds/report-your-data/race-ethnicity-collecting-data-for-reporting-purposes>

Looking Closer

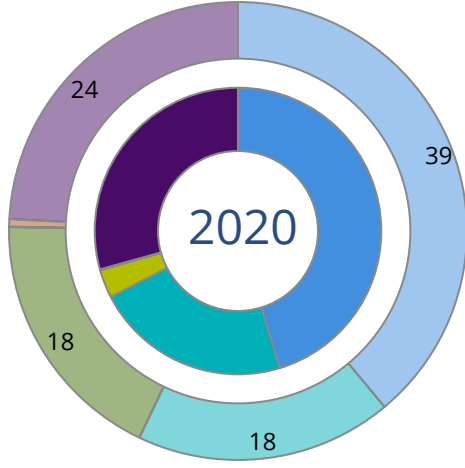
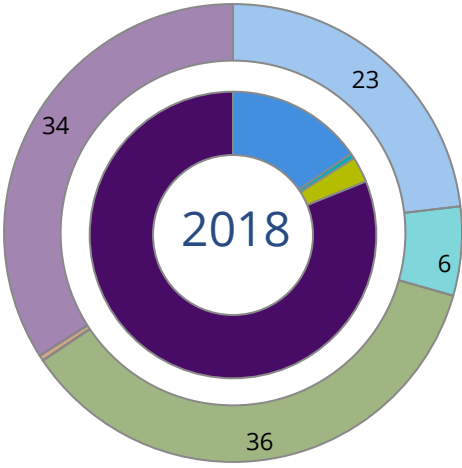
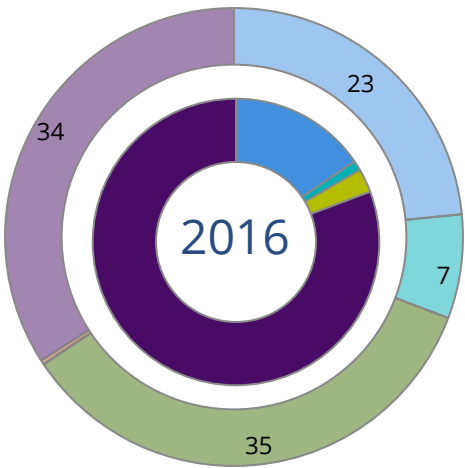
By Race/Ethnicity

This page provides the numbers we used to calculate race / ethnicity group voting rates. We include the counts of students and the change in rates between the two most recent comparable election years. If you notice unavailable/missing data in this page, it could mean any of the following for your institution: (i) does not report this data; (ii) did not provide this data in past years; (iii) does not separately submit data for one or more of the demographic groups, or (iv) the data is reported for 10 or fewer students.

	2016			2018			2020			2016-2020 Change (p.p)
	Enrolled	Voted	Rate	Enrolled	Voted	Rate	Enrolled	Voted	Rate	
Asian	1,471	641	44	1,840	532	29	1,957	1,234	63	↑ 19
American Indian/ Alaska Native	24	-	-	20	11	55	16	12	75	-
Black	955	582	61	1,062	490	46	1,049	763	73	↑ 12
Hispanic	2,003	1,130	56	2,490	911	37	2,761	1,885	68	↑ 12
Native Hawaiian/ Pacific Islander	43	20	47	40	15	38	26	24	92	↑ 46
2 or More Races	549	284	52	590	241	41	650	514	79	↑ 27
White	8,304	4,854	58	8,878	3,740	42	9,079	6,873	76	↑ 17
Race Unknown	994	177	18	1,086	127	12	1,006	300	30	↑ 12

By Voting Method

Not-In-Person Early Vote In-Person Other Provisional Unknown



	2016		2018		2020		2016-2020	
	Voted	Rate	Voted	Rate	Voted	Rate	Change (p.p.)	
Early Vote	83	1	35	1	2,567	22	21	↑
In-Person on Election Day	208	3	176	3	371	3	1	↑
Not-In-Person	1,193	16	932	15	5,262	45	30	↑
Other	–	–	–	–	–	–	–	
Provisional	–	–	–	–	–	–	–	
Voting Method Unknown	6,213	81	4,923	81	3,399	29	-51	↓

These are estimated rates for vote method utilization, the number of students utilizing each method, and the percent of students utilizing each method. Not all U.S. states provide information on vote method; voting method for voter files from these states are classified “Voting Method Unknown.” For a list of these states, see our FAQ. <https://idhe.tufts.edu/nsive/nsive-faq#CampusReports>

By Age Group

	2016	2018	2020
18-21	50%	34%	73%
22-24	54%	36%	66%
25-29	59%	41%	61%
30-39	58%	49%	68%
40-49	74%	60%	72%
50+	81%	73%	81%

Voting is habit-forming and young voters will usually continue as voters in subsequent elections. Also, young voters are more likely to be contacted by campaigns and are visible, and therefore significant, to elected officials. While in the past, we have seen voting rates increase across age groups, in recent cycles, the most significant increases have been among first-time and the youngest voters. Some colleges serve primarily young students, traditionally viewed as students in the 18-21 or 22-24 categories here. Others have much higher numbers of enrolled older undergraduate or graduate students.

Looking Closer

By Age Group

Here, we provide the numbers of students in each age category and the voting rates for each group. These are based on the student’s age on the day of the election, as calculated by the National Student Clearinghouse using data from student enrollment records.

	2016			2018			2020			2016-2020	
	Enrolled	Voted	Rate	Enrolled	Voted	Rate	Enrolled	Voted	Rate	Change (p.p)	
18-21	8,522	4,229	50	9,386	3,187	34	9,182	6,747	73	↑	24
22-24	2,226	1,199	54	2,542	914	36	2,865	1,893	66	↑	12
25-29	1,620	954	59	2,077	853	41	2,269	1,378	61	↑	2
30-39	1,107	646	58	1,189	580	49	1,316	899	68	↑	10
40-49	505	374	74	477	288	60	551	397	72	↓	-2
50+	363	295	81	335	245	73	361	291	81	↓	-1

Looking Closer

By Sex

	2016			2018			2020			2016-2020	
	Enrolled	Voted	Rate	Enrolled	Voted	Rate	Enrolled	Voted	Rate	Change (p.p)	
Female	9,609	5,541	58	10,512	4,258	41	11,038	8,123	74	↑	16
Male	4,733	2,155	46	5,423	1,783	33	5,424	3,427	63	↑	18

These are estimated voting rates for sex groups and the numbers we used to calculate their voting rates. These classifications are provided by campuses and are obtained following the reporting procedures defined by the National Center for Education Statistics (NCES) of the Institute of Education Sciences (IES). Presently, NCES requires institutions to report students as “Male” or “Female” only.*

If you notice missing data in this page, it could mean any of the following for your institution: (i) does not report this data; (ii) did not provide this data in past years; (iii) does not separately submit data for one or more of the demographic groups, or (iv) the data is reported for 10 or fewer students.

*<https://surveys.nces.ed.gov/ipeds/public/survey-materials/faq?faqid=11>

Looking Closer

By Education Level / Undergraduate Class Year

	2016			2018			2020			2016-2020	
	Enrolled	Voted	Rate (%)	Enrolled	Voted	Rate (%)	Enrolled	Voted	Rate (%)	Change (p.p)	
EDUCATION LEVEL											
Undergraduate	10,059	5,042	50	11,149	3,838	34	11,122	7,959	72	↑	21
Graduate	3,578	2,250	63	4,553	2,103	46	4,860	3,215	66	↑	3
Class Unknown	706	322	46	304	126	41	562	413	73	↑	28
CLASS YEAR											
First Year	2,824	48	1,355	3,276	30	999	2,515	74	1,850	↑	26
Second Year	2,004	49	984	2,600	34	884	2,726	71	1,940	↑	22
Upper Level	4,885	52	2,534	5,078	37	1,875	5,667	71	4,012	↑	19
ENROLLMENT STATUS											
Full-time	12,511	6,508	52	14,284	5,165	36	14,623	10,207	70	↑	18
Part-time	1,831	1,188	65	1,722	902	52	1,921	1,398	73	↑	8

These are estimated voting rates by Education Level (undergraduate/graduate), Class Year, and Enrollment Status (full-time/part-time), and the numbers we used to calculate these rates.

If you notice missing data in this page, it could mean any of the following for your institution: (i) does not report this data; (ii) did not provide this data in past years; (iii) does not separately submit data for one or more of the demographic groups, or (iv) the data is reported for 10 or fewer students.

By Field of Study

FIELDS	2016			2018			2020			2016-2020 RateChange (p.p)
	Enrolled	Voted	Rate	Enrolled	Voted	Rate	Enrolled	Voted	Rate	
Area, Ethnic, Cultural, and Gender Studies	44	34	77	17	12	71	24	20	83	↑ 6
Biological and Biomedical Sciences	2,015	933	46	2,215	662	30	2,305	1,619	70	↑ 24
Business, Management, and Marketing	2,021	821	41	2,619	728	28	2,692	1,726	64	↑ 23
Communication and Journalism	799	433	54	841	312	37	812	612	75	↑ 21
Computer and Information Sciences	271	98	36	273	73	27	310	194	63	↑ 26
Education	689	462	67	533	267	50	578	462	80	↑ 13
Engineering and Engineering Technologies	135	61	45	197	59	30	197	115	58	↑ 13

These are estimated voting rates by field of study, and the numbers we used to calculate the field of study rates. For an explanation of CIP codes, please see our FAQ.* There are roughly 8,000 fields of study among U.S. colleges and universities, so we provide rates for condensed categories.

*<https://tufts.app.box.com/v/idhe-nslve-report-faq>

By Field of Study

FIELDS	2016			2018			2020			2016-2020 Change (p.p)
	Enrolled	Voted	Rate	Enrolled	Voted	Rate	Enrolled	Voted	Rate	
English Language and Literature	226	144	64	215	99	46	183	141	77	↑ 13
Foreign Languages, Literatures, and Lingui..	113	71	63	71	35	49	47	36	77	↑ 14
Health Professions	1,656	927	56	2,449	852	35	2,695	1,755	65	↑ 9
History	142	97	68	155	90	58	158	128	81	↑ 13
Law Enforcement, Firefighting, and Protec..	348	192	55	408	159	39	421	299	71	↑ 16
Legal Professions and Studies	1,098	667	61	1,067	540	51	1,193	854	72	↑ 11
Liberal Arts and Sciences, and Humanities	541	249	46	480	140	29	379	252	66	↑ 20
Mathematics and Statistics	159	76	48	131	55	42	115	72	63	↑ 15
Multi/Interdisciplinary Studies	178	84	47	205	53	26	226	116	51	↑ 4
Natural Resources and Conservation	251	155	62	336	176	52	406	341	84	↑ 22
Philosophy and Religious Studies	136	56	41	129	52	40	119	81	68	↑ 27
Physical Sciences	217	115	53	193	71	37	193	133	69	↑ 16
Psychology	1,068	643	60	1,214	512	42	1,244	939	75	↑ 15
Public Administration and Social Service P..	754	528	70	659	354	54	687	520	76	↑ 6

By Field of Study

FIELDS	2016			2018			2020			2016-2020 Change (p.p)
	Enrolled	Voted	Rate	Enrolled	Voted	Rate	Enrolled	Voted	Rate	
Social Sciences	686	424	62	807	397	49	842	650	77	↑ 15
Visual and Performing Arts	190	104	55	242	116	48	261	204	78	↑ 23
Unknown	309	161	52	323	136	42	212	161	76	↑ 24

About This Report

Thank you for participating in the National Study of Learning, Voting, and Engagement.

Since NSLVE's launch in 2013, nearly 1,200 colleges and universities have signed up to receive their voting rates for the 2012, 2014, 2016, 2018, and 2020 federal elections.

Along with others, your institution's participation in this study has allowed us to build a robust database of over 50 million college student records, about 10 million for each election year, that serve as a foundation for innovative research on college student political learning and engagement in democracy.

NSLVE is a signature initiative of the Institute for Democracy and Higher Education (IDHE) at Tufts University's Jonathan M. Tisch College of Civic Life. The mission of IDHE is to shift college and university priorities and culture to advance political learning, agency, and equity. We achieve our mission through research, resource development, technical assistance, and advocacy.

About the Data

The voter registration and voting rates in this report reflect the percentage of your institution's students who were eligible to vote and who actually voted in the 2016, 2018, and 2020 elections.

These results are based on enrollment records your institution submitted to the National Student Clearinghouse (NSC) and publicly available voting files collected by L2 Political.

Enrollment lists are adjusted by deducting students under age 18 (at the time of the election), people identified as non-degree seeking and those identified by campuses as "nonresident aliens" (NRAs) (the federal government's category for mostly international students). Unfortunately, not all campuses report NRAs to NSC. For those campuses, we use IPEDS to calculate the number of NRA students on each campus and adjust NSC enrollment numbers to estimate the number of students to remove. We also quality check NRA removals by verifying that there is little to no discrepancy between the number of international students reported by the campus to IPEDS and to NSC. We cannot adjust subgroup analyses absent identification of NRAs verified by the process above. We welcome closer partnerships with individual colleges and universities to provide more accurate rates. For more on the data and the matching process, see our FAQ on Campus Reports.

Loyola University Chicago

Thank you for the work you do to improve your students' political learning and engagement. We hope that you find your NSLVE report useful. For up-to-date news on NSLVE data, resources, and to sign up for our newsletter visit: <https://idhe.tufts.edu>.

References: IDHE encourages report recipients to share this report as broadly as possible, including posting it on the college or university's website. When doing so, please use the following citation: Institute for Democracy & Higher Education: National Study of Learning, Voting and Engagement. (2021). 2016, 2018, and 2020 report for _____ [name of institution]. Medford, MA.



Barnum Hall
163 Packard Ave.
Medford, MA 02155

tischcollege@tufts.edu
617.627.3453



Institute for Democracy & Higher Education:
National Study of Learning, Voting, and Engagement
Barnum Hall, Medford, MA 02155

Follow Us on Twitter: @TuftsIDHE
NSLVE@tufts.edu
617.627.0620