



October 2021

Student Voting Rates for James Madison University

2020 NSLVE Campus Report

October 2021

Dear Colleagues:

We are pleased to send this tailored report containing your students' voting rates for 2020. This report contains three years of relevant topline data: 2016, 2018, and 2020. As always, we disaggregate the data so you can better identify and address gaps in participation.

College and university students participated in record-breaking numbers in the 2020 election. In 2016, the Average Institutional Voting Rate was 53%. This year, it jumped to 66%. We encourage you to review Democracy Counts 2020, our most recent national report.

As in past years, we urge you to share this report widely and strategically, particularly with faculty who, in 2020, were often the most consistent communicators with students about ever-changing voting conditions and deadlines. We also urge you to review our recommendations for engaging elections to cultivate a robust and healthy campus climate for political engagement, discourse, equity, and participation: Election Imperatives (2019) and the more recent Election Imperatives: A Time of Physical Distancing and Social Action. Since "pervasive political discussions" and attentiveness to the campus culture around speech and academic freedom are among our top recommendations, we direct you to our discussion guides on talking about your NSLVE report, on free speech and inclusion, and on hot topics, our Making Sense of ... guides.

Finally, we always encourage you to work with us. Help us help you get better data by reaching out. Email IDHE@Tufts.edu for more information. And as always, watch your inbox for our periodic newsletter, IDHE Update, for announcements about upcoming releases and new resources.

Congratulations on engaging your students in the 2020 election. Remember, student political learning is a year-round objective. Elections may be episodic, but student political engagement should not be.

All the Best,
IDHE Team

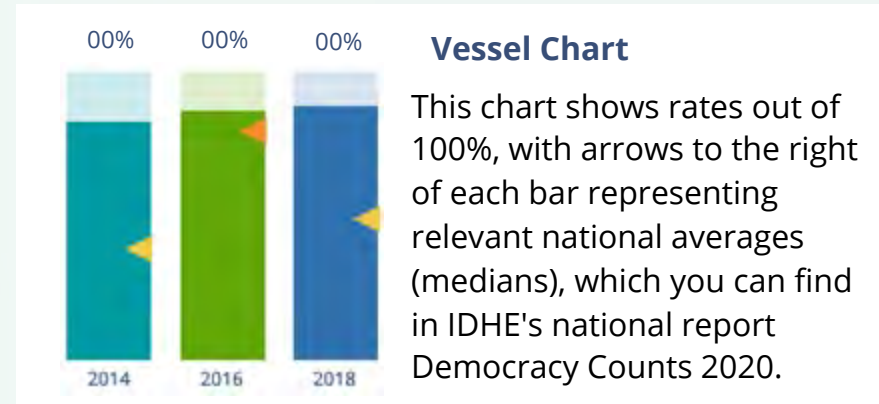


(Top Row from left) Duy Trinh, Program Administrator; Adam Gismondi, Director of Impact; Dave Brinker, Senior Researcher;
(Bottom Row from left) Nancy Thomas, Director; Norma López, Postdoctoral Scholar; Prabhat Gautam, Data Manager.

We also want to acknowledge and thank **Syed Golam Mohaimen, M.S. student in Data Science at Tufts University** for his contributions toward the creation of these reports.

In This Report

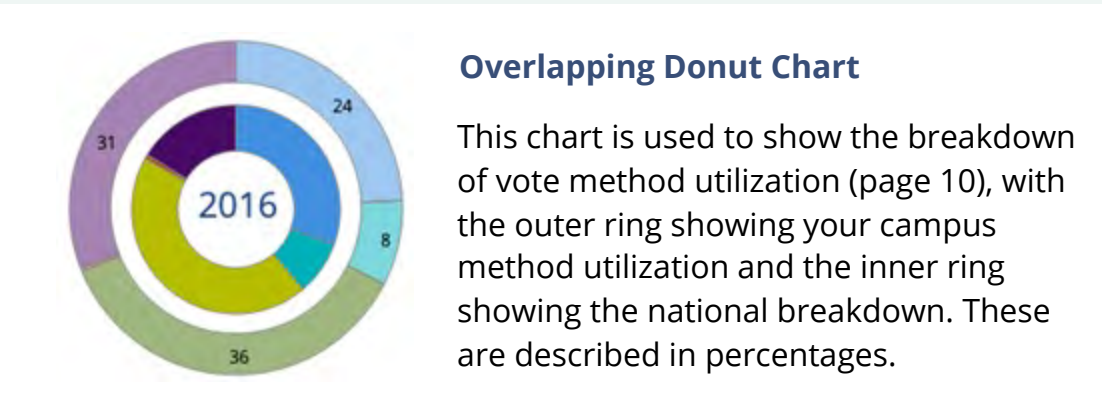
This report presents data on student voter participation rates for your campus. The topline counts on page 5 tells you how many students voted, but we encourage you to look carefully at the data on subsequent pages to learn who voted. Data are presented in the form of vessel charts, overlapping donut charts, and tables.



	2014			2018			2014-2018
	Enrolled	Voted	Rate (%)	Enrolled	Voted	Rate (%)	Change (p.p.)
Asian	-	-	-	-	-	-	-
American Indian/ Alaska Native	-	-	-	-	-	-	-
Black	-	-	-	-	-	-	-
Hispanic	-	-	-	-	-	-	-

Tables

The tables show, on the left-side columns, the numbers of students and the rates from 2016, 2018, and 2020. On the left-side, percentage point (p.p.) changes between 2016 and 2020. A red down arrow indicates a decrease, a green up arrow indicates an increase, and a yellow arrow pointing to the right indicates no change. "-" in these tables indicates that the data is unavailable/missing, or is available for 10 or less students.



Voting, Registration and Yield Rates

YOUR INSTITUTION

74.6%

2020 Voting Rate

+20.5

Change From 2016

ALL INSTITUTIONS

66%

2020 Voting Rate

REGISTRATION RATE

Year	Registration Rate
2016	83.7%
2018	82.9%
2020	92.0%

The **Registration Rate** is the percent of your voting-eligible students who registered to vote.

VOTING RATE OF REGISTERED STUDENTS

Year	Voting Rate of Registered Students
2016	64.6%
2018	40.1%
2020	81.1%

The **Voting Rate of Registered Students** is the percent of registered students who voted on Election Day. We often refer to this as the “yield” rate.

VOTING RATE

Year	Voting Rate
2016	54.1%
2018	33.3%
2020	74.6%

The **Voting Rate** is the percentage of eligible students who voted on Election Day. The voting rate is also the product of the registration and yield rates.

Looking Closer

Voting and Registration Rates

	2016	2018	2020	2016-2020 Change (p.p.)
Total Student Enrollment	21,044	21,492	21,301	↑ 257
(Age under 18/Unknown)	-	-	-	-
(NSC reported non-resident aliens)	548	461	308	↓ -240
(FERPA records blocked)	-	178	-	-
(Non-Degree Seeking Students)	-	-	-	-
Total eligible voters	20,479	20,852	20,980	↑ 501
Number of students who registered	17,149	17,286	19,299	↑ 2,150
Number of students who voted	11,081	6,935	15,656	↑ 4,575
Registration Rate %	84	83	92	↑ 8
Voting Rate of Registered Students %	65	40	81	↑ 17
Voting Rate %	54	33	75	↑ 21

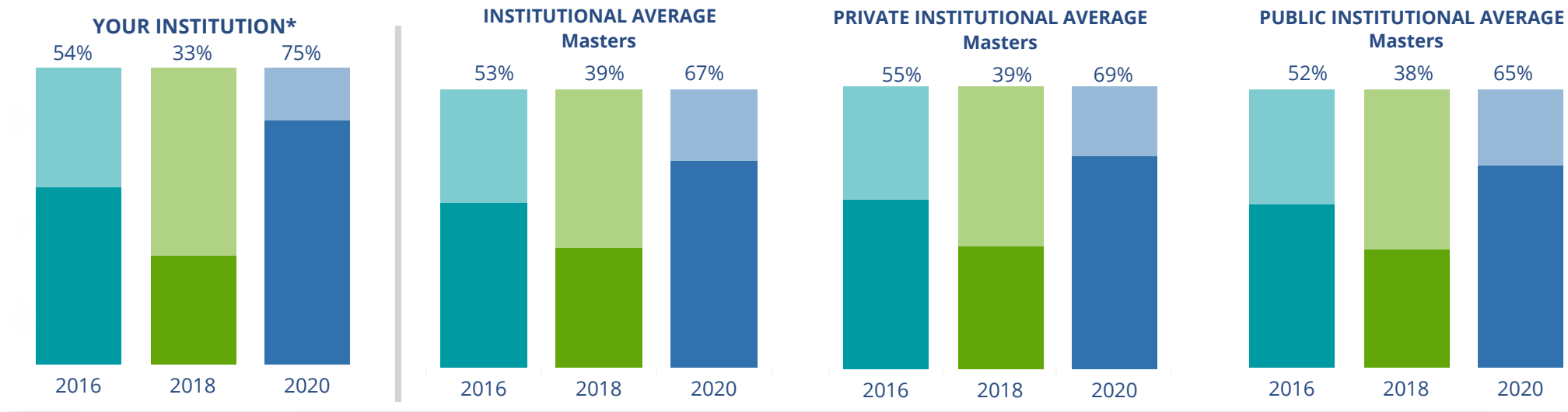
This page provides the numbers we used to calculate your voting, registration, and yield rates. The sub-categories under total student enrollment are the adjustments that we make to account for students who are ineligible to vote due to age or citizenship status. We also exclude, when correctly flagged, students who are not pursuing degrees.

We have removed non-resident aliens (international students) based on your institution's enrollment submission to the National Student Clearinghouse. This is indicated by "NSC reported non-resident aliens" on this page.

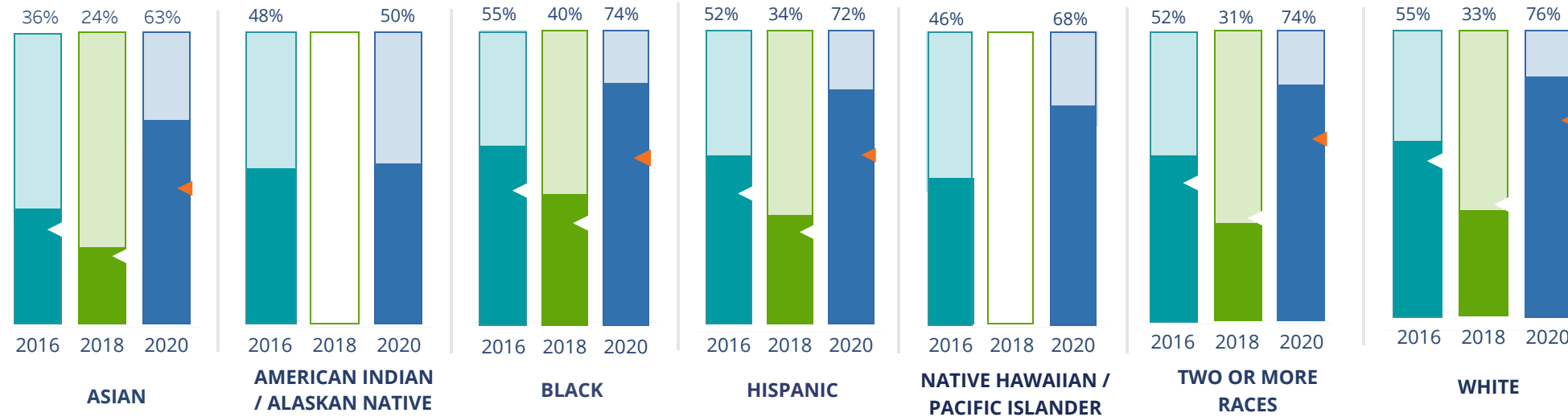
By Institution Types



These are estimated voting rates of your institution compared to the average voting rates of similar institutions in NSLVE. *"Your Institution" chart is presented at a different scale.



By Race / Ethnicity



These are estimated voting rates for race / ethnicity groups. These classifications are provided by campuses and are obtained following race reporting procedures* defined by the National Center for Education Statistics of the Institute of Education Sciences (IES). Please see our FAQ for more detail on why we cannot report national benchmark for some of the demographic groups:

<https://tufts.app.box.com/v/idhe-nsive-report-faq>

If you notice unavailable/missing data in this page, it could mean any of the following for your institution: (i) does not report this data; (ii) did not provide this data in past years; (iii) does not separately submit data for one or more of the demographic groups, or (iv) the data is reported for 10 or fewer students.

* <https://nces.ed.gov/ipeds/report-your-data/race-ethnicity-collecting-data-for-reporting-purposes>

Looking Closer

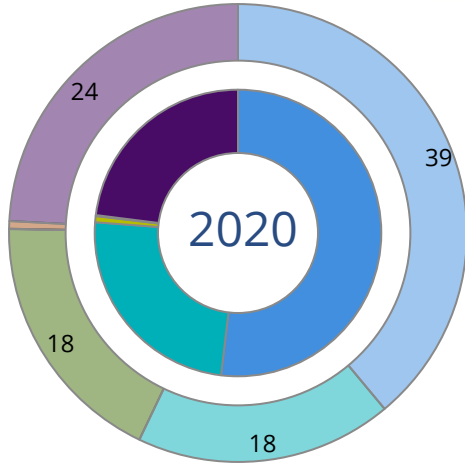
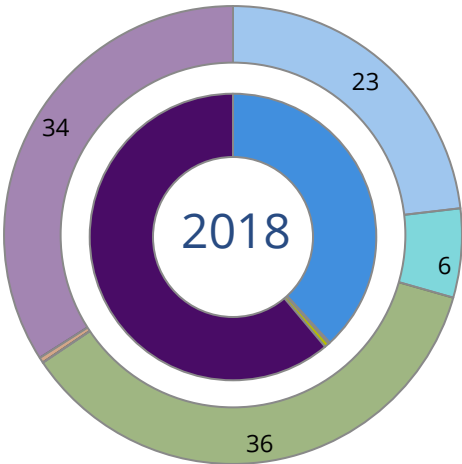
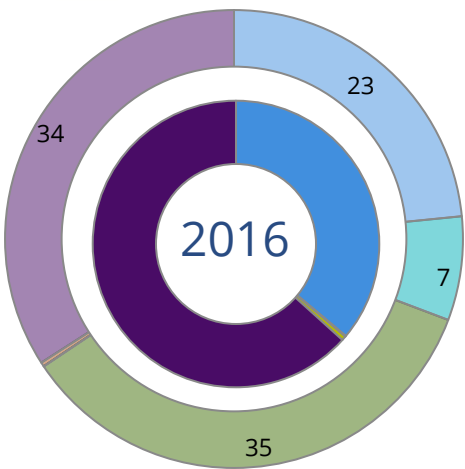
By Race/Ethnicity

This page provides the numbers we used to calculate race / ethnicity group voting rates. We include the counts of students and the change in rates between the two most recent comparable election years. If you notice unavailable/missing data in this page, it could mean any of the following for your institution: (i) does not report this data; (ii) did not provide this data in past years; (iii) does not separately submit data for one or more of the demographic groups, or (iv) the data is reported for 10 or fewer students.

	2016			2018			2020			2016-2020 Change (p.p)
	Enrolled	Voted	Rate	Enrolled	Voted	Rate	Enrolled	Voted	Rate	
Asian	929	334	36	933	224	24	991	628	63	↑ 27
American Indian/ Alaska Native	27	13	48	23	-	-	22	11	50	↑ 2
Black	957	526	55	1,026	413	40	1,049	778	74	↑ 19
Hispanic	1,251	653	52	1,386	469	34	1,499	1,082	72	↑ 20
Native Hawaiian/ Pacific Islander	24	11	46	23	-	-	22	15	68	↑ 22
2 or More Races	805	417	52	953	293	31	1,002	744	74	↑ 22
White	15,719	8,684	55	15,887	5,283	33	15,989	12,088	76	↑ 20
Race Unknown	767	443	58	621	242	39	406	310	76	↑ 19

By Voting Method

Not-In-Person Early Vote In-Person Other Provisional Unknown



	2016		2018		2020		2016-2020
	Voted	Rate	Voted	Rate	Voted	Rate	Change (p.p.)
Early Vote	12	0	11	0	3,806	24	24 ↑
In-Person on Election Day	57	1	38	1	110	1	0 ↑
Not-In-Person	4,001	36	2,649	38	8,129	52	16 ↑
Other	–	–	–	–	–	–	–
Provisional	–	–	–	–	22	0	–
Voting Method Unknown	7,008	63	4,234	61	3,589	23	-40 ↓

These are estimated rates for vote method utilization, the number of students utilizing each method, and the percent of students utilizing each method. Not all U.S. states provide information on vote method; voting method for voter files from these states are classified “Voting Method Unknown.” For a list of these states, see our FAQ. <https://idhe.tufts.edu/nsive/nsive-faq#CampusReports>

By Age Group

	2016	2018	2020
18-21	52%	30%	74%
22-24	56%	35%	74%
25-29	62%	53%	74%
30-39	80%	68%	82%
40-49	82%	69%	86%
50+	85%	85%	90%

Voting is habit-forming and young voters will usually continue as voters in subsequent elections. Also, young voters are more likely to be contacted by campaigns and are visible, and therefore significant, to elected officials. While in the past, we have seen voting rates increase across age groups, in recent cycles, the most significant increases have been among first-time and the youngest voters. Some colleges serve primarily young students, traditionally viewed as students in the 18-21 or 22-24 categories here. Others have much higher numbers of enrolled older undergraduate or graduate students.

Looking Closer

By Age Group

Here, we provide the numbers of students in each age category and the voting rates for each group. These are based on the student's age on the day of the election, as calculated by the National Student Clearinghouse using data from student enrollment records.

	2016			2018			2020			2016-2020 Change (p.p)
	Enrolled	Voted	Rate	Enrolled	Voted	Rate	Enrolled	Voted	Rate	
18-21	16,094	8,391	52	16,431	4,940	30	16,398	12,181	74	↑ 22
22-24	2,898	1,610	56	2,845	1,005	35	2,975	2,187	74	↑ 18
25-29	673	419	62	672	353	53	681	506	74	↑ 12
30-39	458	365	80	534	362	68	531	437	82	↑ 3
40-49	231	190	82	246	170	69	250	215	86	↑ 4
50+	125	106	85	124	105	85	145	130	90	↑ 5

Looking Closer

By Sex

	2016			2018			2020			2016-2020
	Enrolled	Voted	Rate	Enrolled	Voted	Rate	Enrolled	Voted	Rate	Change (p.p)
Female	12,324	7,322	59	12,405	4,631	37	12,485	9,941	80	↑ 20
Male	8,155	3,759	46	8,447	2,304	27	8,493	5,713	67	↑ 21

These are estimated voting rates for sex groups and the numbers we used to calculate their voting rates. These classifications are provided by campuses and are obtained following the reporting procedures defined by the National Center for Education Statistics (NCES) of the Institute of Education Sciences (IES). Presently, NCES requires institutions to report students as “Male” or “Female” only.*

If you notice missing data in this page, it could mean any of the following for your institution: (i) does not report this data; (ii) did not provide this data in past years; (iii) does not separately submit data for one or more of the demographic groups, or (iv) the data is reported for 10 or fewer students.

*<https://surveys.nces.ed.gov/ipeds/public/survey-materials/faq?faqid=11>

Looking Closer

By Education Level / Undergraduate Class Year

	2016			2018			2020			2016-2020	
	Enrolled	Voted	Rate (%)	Enrolled	Voted	Rate (%)	Enrolled	Voted	Rate (%)	Change (p.p)	
EDUCATION LEVEL											
Undergraduate	18,678	9,804	52	18,985	5,844	31	19,064	14,072	74	↑	21
Graduate	1,486	1,024	69	1,572	867	55	1,588	1,309	82	↑	14
Class Unknown	315	253	80	295	224	76	328	275	84	↑	4
CLASS YEAR											
First Year	4,622	50	2,307	4,702	28	1,332	4,621	70	3,215	↑	20
Second Year	4,724	50	2,340	5,042	28	1,394	4,758	72	3,449	↑	23
Upper Level	9,333	55	5,158	9,235	34	3,115	9,686	77	7,410	↑	21
ENROLLMENT STATUS											
Full-time	18,982	10,040	53	19,193	5,996	31	19,081	14,158	74	↑	21
Part-time	1,497	1,041	70	1,659	939	57	1,899	1,498	79	↑	9

These are estimated voting rates by Education Level (undergraduate/graduate), Class Year, and Enrollment Status (full-time/part-time), and the numbers we used to calculate these rates.

If you notice missing data in this page, it could mean any of the following for your institution: (i) does not report this data; (ii) did not provide this data in past years; (iii) does not separately submit data for one or more of the demographic groups, or (iv) the data is reported for 10 or fewer students.

By Field of Study

FIELDS	2016			2018			2020			2016-2020 RateChange (p.p)
	Enrolled	Voted	Rate	Enrolled	Voted	Rate	Enrolled	Voted	Rate	
Biological and Biomedical Sciences	1,025	542	53	1,079	313	29	1,026	749	73	↑ 20
Business, Management, and Marketing	3,656	1,619	44	3,462	766	22	3,396	2,296	68	↑ 23
Communication and Journalism	1,415	821	58	1,466	512	35	1,346	1,048	78	↑ 20
Computer and Information Sciences	1,021	475	47	1,154	305	26	1,209	804	67	↑ 20
Education	517	361	70	611	374	61	1,061	882	83	↑ 13
Engineering and Engineering Technologies	383	170	44	405	98	24	405	279	69	↑ 25
English Language and Literature	409	253	62	335	149	44	305	264	87	↑ 25

These are estimated voting rates by field of study, and the numbers we used to calculate the field of study rates. For an explanation of CIP codes, please see our FAQ.* There are roughly 8,000 fields of study among U.S. colleges and universities, so we provide rates for condensed categories.

*<https://tufts.app.box.com/v/idhe-nslve-report-faq>

By Field of Study

FIELDS	2016			2018			2020			2016-2020 Change (p.p)
	Enrolled	Voted	Rate	Enrolled	Voted	Rate	Enrolled	Voted	Rate	
Family and Consumer/Human Sciences	135	66	49	113	27	24	94	65	69	↑ 20
Foreign Languages, Literatures, and Lingui..	70	39	56	68	34	50	56	43	77	↑ 21
Health Professions	3,699	2,018	55	3,755	1,129	30	3,810	2,884	76	↑ 21
History	254	158	62	222	115	52	236	183	78	↑ 15
Legal Professions and Studies	313	182	58	306	106	35	327	248	76	↑ 18
Liberal Arts and Sciences, and Humanities	1,393	787	56	1,382	493	36	1,039	786	76	↑ 19
Mathematics and Statistics	202	124	61	201	74	37	158	120	76	↑ 15
Multi/Interdisciplinary Studies	641	349	54	638	199	31	537	384	72	↑ 17
Parks, Recreation, Leisure, and Fitness Stu..	1,038	434	42	1,097	224	20	1,210	850	70	↑ 28
Philosophy and Religious Studies	51	29	57	42	17	40	40	29	73	↑ 16
Physical Sciences	372	213	57	370	136	37	357	281	79	↑ 21
Psychology	952	555	58	1,056	363	34	1,188	901	76	↑ 18
Public Administration and Social Service P..	403	290	72	404	230	57	392	334	85	↑ 13
Social Sciences	1,190	725	61	1,299	577	44	1,259	978	78	↑ 17

By Field of Study

FIELDS	2016			2018			2020			2016-2020 Change (p.p)
	Enrolled	Voted	Rate	Enrolled	Voted	Rate	Enrolled	Voted	Rate	
Visual and Performing Arts	1,040	627	60	1,096	473	43	1,197	972	81	↑ 21
Unknown	300	244	81	291	221	76	332	276	83	↑ 2

About This Report

Thank you for participating in the National Study of Learning, Voting, and Engagement.

Since NSLVE's launch in 2013, nearly 1,200 colleges and universities have signed up to receive their voting rates for the 2012, 2014, 2016, 2018, and 2020 federal elections.

Along with others, your institution's participation in this study has allowed us to build a robust database of over 50 million college student records, about 10 million for each election year, that serve as a foundation for innovative research on college student political learning and engagement in democracy.

NSLVE is a signature initiative of the Institute for Democracy and Higher Education (IDHE) at Tufts University's Jonathan M. Tisch College of Civic Life. The mission of IDHE is to shift college and university priorities and culture to advance political learning, agency, and equity. We achieve our mission through research, resource development, technical assistance, and advocacy.

About the Data

The voter registration and voting rates in this report reflect the percentage of your institution's students who were eligible to vote and who actually voted in the 2016, 2018, and 2020 elections.

These results are based on enrollment records your institution submitted to the National Student Clearinghouse (NSC) and publicly available voting files collected by L2 Political.

Enrollment lists are adjusted by deducting students under age 18 (at the time of the election), people identified as non-degree seeking and those identified by campuses as "nonresident aliens" (NRAs) (the federal government's category for mostly international students). Unfortunately, not all campuses report NRAs to NSC. For those campuses, we use IPEDS to calculate the number of NRA students on each campus and adjust NSC enrollment numbers to estimate the number of students to remove. We also quality check NRA removals by verifying that there is little to no discrepancy between the number of international students reported by the campus to IPEDS and to NSC. We cannot adjust subgroup analyses absent identification of NRAs verified by the process above. We welcome closer partnerships with individual colleges and universities to provide more accurate rates. For more on the data and the matching process, see our FAQ on Campus Reports.

James Madison University

Thank you for the work you do to improve your students' political learning and engagement. We hope that you find your NSLVE report useful. For up-to-date news on NSLVE data, resources, and to sign up for our newsletter visit: <https://idhe.tufts.edu>.

References: IDHE encourages report recipients to share this report as broadly as possible, including posting it on the college or university's website. When doing so, please use the following citation: Institute for Democracy & Higher Education: National Study of Learning, Voting and Engagement. (2021). 2016, 2018, and 2020 report for _____ [name of institution]. Medford, MA.



Barnum Hall
163 Packard Ave.
Medford, MA 02155

tischcollege@tufts.edu
617.627.3453



Institute for Democracy & Higher Education:
National Study of Learning, Voting, and Engagement
Barnum Hall, Medford, MA 02155

Follow Us on Twitter: @TuftsIDHE
NSLVE@tufts.edu
617.627.0620