



October 2021

Student Voting Rates for Harvard University

2020 NSLVE Campus Report

October 2021

Dear Colleagues:

We are pleased to send this tailored report containing your students' voting rates for 2020. This report contains three years of relevant topline data: 2016, 2018, and 2020. As always, we disaggregate the data so you can better identify and address gaps in participation.

College and university students participated in record-breaking numbers in the 2020 election. In 2016, the Average Institutional Voting Rate was 53%. This year, it jumped to 66%. We encourage you to review Democracy Counts 2020, our most recent national report.

As in past years, we urge you to share this report widely and strategically, particularly with faculty who, in 2020, were often the most consistent communicators with students about ever-changing voting conditions and deadlines. We also urge you to review our recommendations for engaging elections to cultivate a robust and healthy campus climate for political engagement, discourse, equity, and participation: Election Imperatives (2019) and the more recent Election Imperatives: A Time of Physical Distancing and Social Action. Since "pervasive political discussions" and attentiveness to the campus culture around speech and academic freedom are among our top recommendations, we direct you to our discussion guides on talking about your NSLVE report, on free speech and inclusion, and on hot topics, our Making Sense of ... guides.

Finally, we always encourage you to work with us. Help us help you get better data by reaching out. Email IDHE@Tufts.edu for more information. And as always, watch your inbox for our periodic newsletter, IDHE Update, for announcements about upcoming releases and new resources.

Congratulations on engaging your students in the 2020 election. Remember, student political learning is a year-round objective. Elections may be episodic, but student political engagement should not be.

All the Best,
IDHE Team



(Top Row from left) Duy Trinh, Program Administrator; Adam Gismondi, Director of Impact; Dave Brinker, Senior Researcher;
(Bottom Row from left) Nancy Thomas, Director; Norma López, Postdoctoral Scholar; Prabhat Gautam, Data Manager.

We also want to acknowledge and thank **Syed Golam Mohaimen, M.S. student in Data Science at Tufts University** for his contributions toward the creation of these reports.

In This Report

This report presents data on student voter participation rates for your campus. The topline counts on page 5 tells you how many students voted, but we encourage you to look carefully at the data on subsequent pages to learn who voted. Data are presented in the form of vessel charts, overlapping donut charts, and tables.



Vessel Chart

This chart shows rates out of 100%, with arrows to the right of each bar representing relevant national averages (medians), which you can find in IDHE's national report Democracy Counts 2020.

	2014			2018			2014-2018
	Enrolled	Voted	Rate (%)	Enrolled	Voted	Rate (%)	Change (p.p.)
Asian	-	-	-	-	-	-	-
American Indian/ Alaska Native	-	-	-	-	-	-	-
Black	-	-	-	-	-	-	-
Hispanic	-	-	-	-	-	-	-

Tables

The tables show, on the left-side columns, the numbers of students and the rates from 2016, 2018, and 2020. On the left-side, percentage point (p.p.) changes between 2016 and 2020. A red down arrow indicates a decrease, a green up arrow indicates an increase, and a yellow arrow pointing to the right indicates no change. "-" in these tables indicates that the data is unavailable/missing, or is available for 10 or less students.



Overlapping Donut Chart

This chart is used to show the breakdown of vote method utilization (page 10), with the outer ring showing your campus method utilization and the inner ring showing the national breakdown. These are described in percentages.

Voting, Registration and Yield Rates

YOUR INSTITUTION

70.6%

2020 Voting Rate

+9.3

Change From 2016

ALL INSTITUTIONS

66%

2020 Voting Rate

REGISTRATION RATE

Year	Registration Rate
2016	80.1%
2018	80.0%
2020	83.4%

The **Registration Rate** is the percent of your voting-eligible students who registered to vote.

VOTING RATE OF REGISTERED STUDENTS

Year	Voting Rate of Registered Students
2016	76.6%
2018	63.4%
2020	84.7%

The **Voting Rate of Registered Students** is the percent of registered students who voted on Election Day. We often refer to this as the “yield” rate.

VOTING RATE

Year	Voting Rate
2016	61.3%
2018	50.7%
2020	70.6%

The **Voting Rate** is the percentage of eligible students who voted on Election Day. The voting rate is also the product of the registration and yield rates.

Looking Closer

Voting and Registration Rates

	2016	2018	2020	2016-2020 Change (p.p.)
Total Student Enrollment	29,388	30,530	29,757	↑ 369
(Age under 18/Unknown)	13	–	–	–
(IPEDS estimated non-resident aliens)	6,751	7,056	6,795	↑ 44
(FERPA records blocked)	72	35	282	↑ 210
(Non-Degree Seeking Students)	574	546	342	↓ -232
Total eligible voters	21,979	22,889	22,337	↑ 358
Number of students who registered	17,603	18,307	18,621	↑ 1,018
Number of students who voted	13,484	11,607	15,779	↑ 2,295
Registration Rate %	80	80	83	↑ 3
Voting Rate of Registered Students %	77	63	85	↑ 8
Voting Rate %	61	51	71	↑ 9

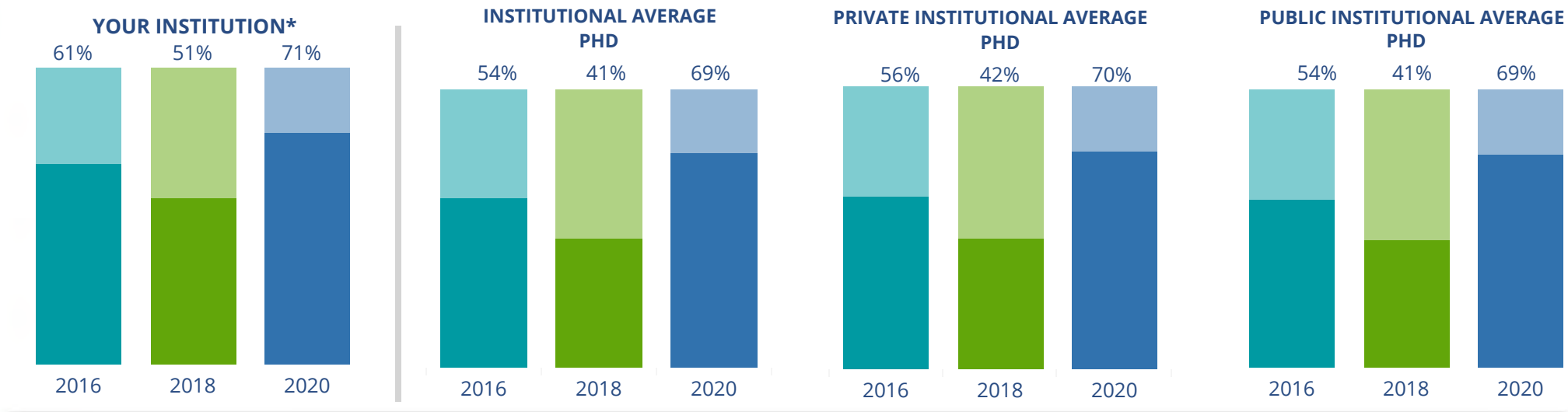
This page provides the numbers we used to calculate your voting, registration, and yield rates. The sub-categories under total student enrollment are the adjustments that we make to account for students who are ineligible to vote due to age or citizenship status. We also exclude, when correctly flagged, students who are not pursuing degrees.

We use IPEDS-derived estimates of NRAs when institutions do not submit non-resident alien status data to NSC, or we cannot verify the accuracy of the reported counts. This estimate is given by "IPEDS estimated non-resident aliens" on this page. If you believe the number of international students reported on this report is incorrect, you can manually adjust your institution's voting rates by using our recalculation tool. <https://id-he.tufts.edu/nsive/nsive-recalculation-tool>.

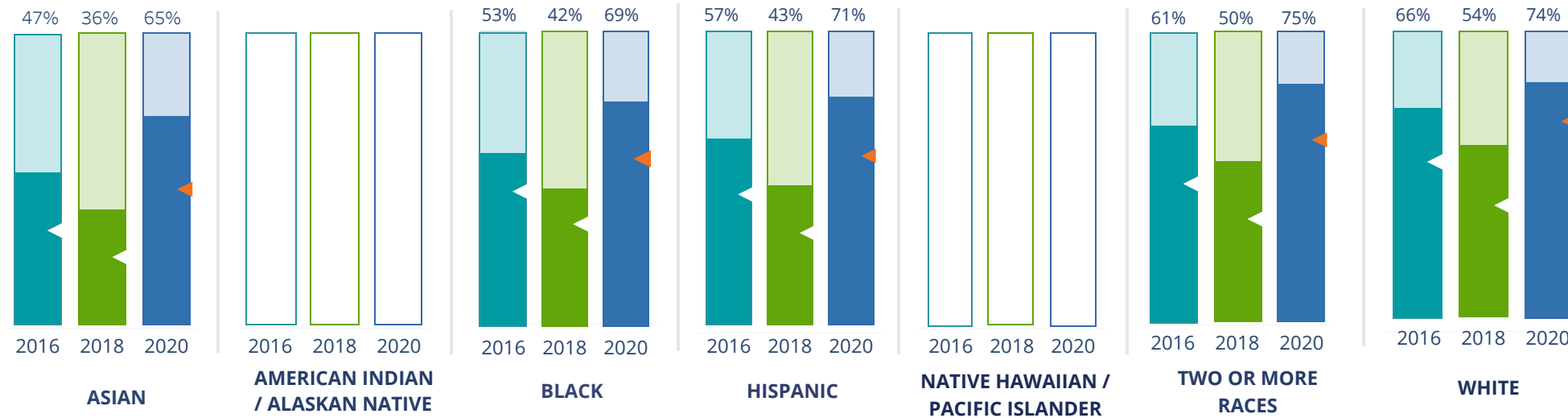
By Institution Types



These are estimated voting rates of your institution compared to the average voting rates of similar institutions in NSLVE. *"Your Institution" chart is presented at a different scale.



By Race / Ethnicity



These are estimated voting rates for race / ethnicity groups. These classifications are provided by campuses and are obtained following race reporting procedures* defined by the National Center for Education Statistics of the Institute of Education Sciences (IES). Please see our FAQ for more detail on why we cannot report national benchmark for some of the demographic groups:

<https://tufts.app.box.com/v/idhe-nsve-report-faq>

If you notice unavailable/missing data in this page, it could mean any of the following for your institution: (i) does not report this data; (ii) did not provide this data in past years; (iii) does not separately submit data for one or more of the demographic groups, or (iv) the data is reported for 10 or fewer students.

* <https://nces.ed.gov/ipeds/report-your-data/race-ethnicity-collecting-data-for-reporting-purposes>

Looking Closer

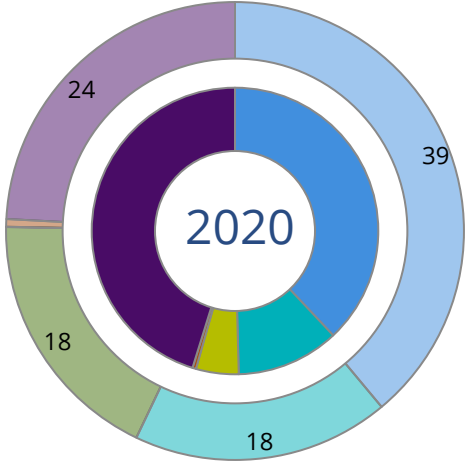
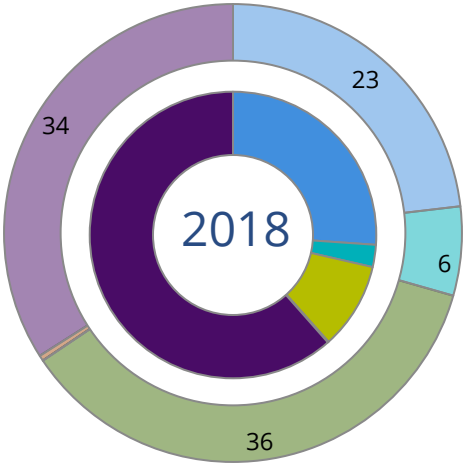
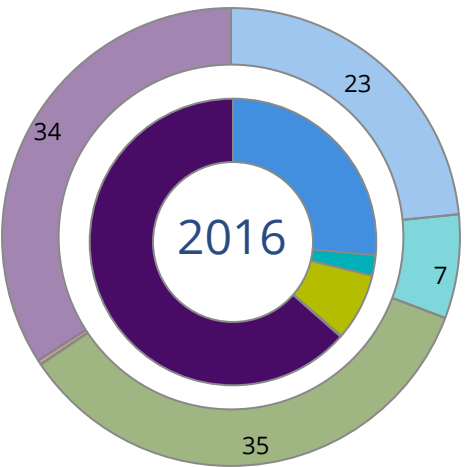
By Race/Ethnicity

This page provides the numbers we used to calculate race / ethnicity group voting rates. We include the counts of students and the change in rates between the two most recent comparable election years. If you notice unavailable/missing data in this page, it could mean any of the following for your institution: (i) does not report this data; (ii) did not provide this data in past years; (iii) does not separately submit data for one or more of the demographic groups, or (iv) the data is reported for 10 or fewer students.

	2016			2018			2020			2016-2020 Change (p.p)
	Enrolled	Voted	Rate	Enrolled	Voted	Rate	Enrolled	Voted	Rate	
Asian	1,490	703	47	1,335	476	36	1,054	681	65	↑ 17
American Indian/ Alaska Native	-	-	-	-	-	-	-	-	-	-
Black	524	280	53	501	212	42	495	341	69	↑ 15
Hispanic	1,541	885	57	1,560	671	43	1,665	1,174	71	↑ 13
Native Hawaiian/ Pacific Islander	-	-	-	-	-	-	-	-	-	-
2 or More Races	6,532	4,009	61	7,328	3,693	50	7,392	5,514	75	↑ 13
White	4,282	2,817	66	3,516	1,904	54	2,841	2,110	74	↑ 8
Race Unknown	14,159	4,788	34	15,498	4,650	30	15,522	5,954	38	↑ 5

By Voting Method

Not-In-Person
Early Vote
In-Person
Other
Provisional
Unknown



	2016		2018		2020		2016-2020	
	Voted	Rate	Voted	Rate	Voted	Rate	Change (p.p.)	
Early Vote	316	2	291	3	1,838	12	9	↑
In-Person on Election Day	1,029	8	1,132	10	764	5	-3	↓
Not-In-Person	3,573	27	3,029	26	5,994	38	12	↑
Other	-	-	-	-	-	-	-	
Provisional	-	-	-	-	65	0	-	
Voting Method Unknown	8,555	64	7,148	62	7,116	45	-18	↓

These are estimated rates for vote method utilization, the number of students utilizing each method, and the percent of students utilizing each method. Not all U.S. states provide information on vote method; voting method for voter files from these states are classified "Voting Method Unknown." For a list of these states, see our FAQ. <https://idhe.tufts.edu/nsive/nsive-faq#CampusReports>

By Age Group

	2016	2018	2020
18-21	49%	37%	68%
22-24	46%	36%	53%
25-29	46%	39%	51%
30-39	43%	36%	46%
40-49	54%	47%	55%
50+	69%	63%	69%

Voting is habit-forming and young voters will usually continue as voters in subsequent elections. Also, young voters are more likely to be contacted by campaigns and are visible, and therefore significant, to elected officials. While in the past, we have seen voting rates increase across age groups, in recent cycles, the most significant increases have been among first-time and the youngest voters. Some colleges serve primarily young students, traditionally viewed as students in the 18-21 or 22-24 categories here. Others have much higher numbers of enrolled older undergraduate or graduate students.

Looking Closer

By Age Group

Here, we provide the numbers of students in each age category and the voting rates for each group. These are based on the student’s age on the day of the election, as calculated by the National Student Clearinghouse using data from student enrollment records.

	2016			2018			2020			2016-2020	
	Enrolled	Voted	Rate	Enrolled	Voted	Rate	Enrolled	Voted	Rate	Change (p.p)	
18-21	6,343	3,102	49	6,175	2,265	37	5,037	3,408	68	↑	19
22-24	4,546	2,092	46	4,610	1,671	36	4,569	2,433	53	↑	7
25-29	9,538	4,401	46	9,675	3,784	39	9,252	4,748	51	↑	5
30-39	5,547	2,380	43	6,162	2,242	36	6,622	3,073	46	↑	3
40-49	1,677	903	54	2,022	953	47	2,212	1,227	55	↑	2
50+	882	606	69	1,099	692	63	1,284	890	69	↑	1

Looking Closer

By Sex

	2016			2018			2020			2016-2020	
	Enrolled	Voted	Rate	Enrolled	Voted	Rate	Enrolled	Voted	Rate	Change (p.p)	
Female	13,853	6,988	50	14,757	6,195	42	15,044	8,510	57	↑	6
Male	14,672	6,496	44	14,971	5,408	36	13,862	7,234	52	↑	8

These are estimated voting rates for sex groups and the numbers we used to calculate their voting rates. These classifications are provided by campuses and are obtained following the reporting procedures defined by the National Center for Education Statistics (NCES) of the Institute of Education Sciences (IES). Presently, NCES requires institutions to report students as “Male” or “Female” only.*

If you notice missing data in this page, it could mean any of the following for your institution: (i) does not report this data; (ii) did not provide this data in past years; (iii) does not separately submit data for one or more of the demographic groups, or (iv) the data is reported for 10 or fewer students.

*<https://surveys.nces.ed.gov/ipeds/public/survey-materials/faq?faqid=11>

Looking Closer

By Education Level / Undergraduate Class Year

	2016			2018			2020			2016-2020	
	Enrolled	Voted	Rate (%)	Enrolled	Voted	Rate (%)	Enrolled	Voted	Rate (%)	Change (p.p)	
EDUCATION LEVEL											
Undergraduate	7,235	3,579	49	7,238	2,661	37	5,938	3,914	66	↑	16
Graduate	14,719	6,597	45	15,505	5,913	38	16,001	8,045	50	↑	5
Class Unknown	6,579	3,308	50	7,000	3,033	43	7,037	3,820	54	↑	4
CLASS YEAR											
First Year	1,559	46	724	1,490	34	501	1,370	68	934	↑	22
Second Year	1,749	49	862	1,745	35	607	1,417	66	938	↑	17
Upper Level	3,835	51	1,942	3,838	39	1,494	3,060	65	1,982	↑	14
ENROLLMENT STATUS											
Full-time	19,548	8,943	46	19,816	7,248	37	18,246	9,896	54	↑	8
Part-time	8,985	4,541	51	9,927	4,359	44	10,726	5,882	55	↑	4

These are estimated voting rates by Education Level (undergraduate/graduate), Class Year, and Enrollment Status (full-time/part-time), and the numbers we used to calculate these rates.

If you notice missing data in this page, it could mean any of the following for your institution: (i) does not report this data; (ii) did not provide this data in past years; (iii) does not separately submit data for one or more of the demographic groups, or (iv) the data is reported for 10 or fewer students.

By Field of Study

FIELDS	2016			2018			2020			2016-2020	
	Enrolled	Voted	Rate	Enrolled	Voted	Rate	Enrolled	Voted	Rate	Change (p.p)	
Architecture	823	239	29	567	139	25	539	202	37	↑	8
Area, Ethnic, Cultural, and Gender Studies	438	195	45	436	168	39	424	196	46	↑	2
Biological and Biomedical Sciences	2,088	1,119	54	2,197	920	42	2,439	1,396	57	↑	4
Business, Management, and Marketing	2,703	1,056	39	2,767	774	28	2,619	1,129	43	↑	4
Communication and Journalism	50	31	62	56	28	50	71	41	58	↓	-4
Computer and Information Sciences	650	269	41	783	291	37	672	361	54	↑	12
Education	935	523	56	901	394	44	1,170	682	58	↑	2

These are estimated voting rates by field of study, and the numbers we used to calculate the field of study rates. For an explanation of CIP codes, please see our FAQ.* There are roughly 8,000 fields of study among U.S. colleges and universities, so we provide rates for condensed categories.

*<https://tufts.app.box.com/v/idhe-nslve-report-faq>

By Field of Study

FIELDS	2016			2018			2020			2016-2020 Change (p.p)
	Enrolled	Voted	Rate	Enrolled	Voted	Rate	Enrolled	Voted	Rate	
Engineering and Engineering Technologies	700	273	39	884	251	28	900	417	46	↑ 7
English Language and Literature	213	127	60	197	95	48	132	88	67	↑ 7
Foreign Languages, Literatures, and Lingui..	319	141	44	322	115	36	288	134	47	↑ 2
Health Professions	1,429	645	45	1,728	684	40	1,444	838	58	↑ 13
History	569	345	61	545	243	45	433	273	63	↑ 2
Legal Professions and Studies	1,980	1,061	54	1,925	886	46	1,790	1,134	63	↑ 10
Liberal Arts and Sciences, and Humanities	2,154	1,050	49	2,296	883	38	2,461	1,557	63	↑ 15
Mathematics and Statistics	754	280	37	803	249	31	666	360	54	↑ 17
Multi/Interdisciplinary Studies	261	124	48	279	134	48	425	219	52	↑ 4
Natural Resources and Conservation	277	133	48	520	174	33	461	201	44	↓ -4
Philosophy and Religious Studies	212	106	50	231	92	40	215	128	60	↑ 10
Physical Sciences	808	375	46	701	248	35	732	385	53	↑ 6
Psychology	365	215	59	358	160	45	288	184	64	↑ 5

By Field of Study

FIELDS	2016			2018			2020			2016-2020	
	Enrolled	Voted	Rate	Enrolled	Voted	Rate	Enrolled	Voted	Rate	Change (p.p)	
Public Administration and Social Service Professions	1,119	451	40	1,088	384	35	837	407	49	↑	8
Social Sciences	2,233	1,073	48	2,355	908	39	2,169	1,202	55	↑	7
Visual and Performing Arts	383	185	48	450	183	41	392	190	48	↑	0
Unknown	6,717	3,285	49	7,046	3,059	43	7,103	3,861	54	↑	5

About This Report

Thank you for participating in the National Study of Learning, Voting, and Engagement.

Since NSLVE's launch in 2013, nearly 1,200 colleges and universities have signed up to receive their voting rates for the 2012, 2014, 2016, 2018, and 2020 federal elections.

Along with others, your institution's participation in this study has allowed us to build a robust database of over 50 million college student records, about 10 million for each election year, that serve as a foundation for innovative research on college student political learning and engagement in democracy.

NSLVE is a signature initiative of the Institute for Democracy and Higher Education (IDHE) at Tufts University's Jonathan M. Tisch College of Civic Life. The mission of IDHE is to shift college and university priorities and culture to advance political learning, agency, and equity. We achieve our mission through research, resource development, technical assistance, and advocacy.

About the Data

The voter registration and voting rates in this report reflect the percentage of your institution's students who were eligible to vote and who actually voted in the 2016, 2018, and 2020 elections.

These results are based on enrollment records your institution submitted to the National Student Clearinghouse (NSC) and publicly available voting files collected by L2 Political.

Enrollment lists are adjusted by deducting students under age 18 (at the time of the election), people identified as non-degree seeking and those identified by campuses as "nonresident aliens" (NRAs) (the federal government's category for mostly international students). Unfortunately, not all campuses report NRAs to NSC. For those campuses, we use IPEDS to calculate the number of NRA students on each campus and adjust NSC enrollment numbers to estimate the number of students to remove. We also quality check NRA removals by verifying that there is little to no discrepancy between the number of international students reported by the campus to IPEDS and to NSC. We cannot adjust subgroup analyses absent identification of NRAs verified by the process above. We welcome closer partnerships with individual colleges and universities to provide more accurate rates. For more on the data and the matching process, see our FAQ on Campus Reports.

Harvard University

Thank you for the work you do to improve your students' political learning and engagement. We hope that you find your NSLVE report useful. For up-to-date news on NSLVE data, resources, and to sign up for our newsletter visit: <https://idhe.tufts.edu>.

References: IDHE encourages report recipients to share this report as broadly as possible, including posting it on the college or university's website. When doing so, please use the following citation: Institute for Democracy & Higher Education: National Study of Learning, Voting and Engagement. (2021). 2016, 2018, and 2020 report for _____ [name of institution]. Medford, MA.



Barnum Hall
163 Packard Ave.
Medford, MA 02155

tischcollege@tufts.edu
617.627.3453



Institute for Democracy & Higher Education:
National Study of Learning, Voting, and Engagement
Barnum Hall, Medford, MA 02155

Follow Us on Twitter: @TuftsIDHE
NSLVE@tufts.edu
617.627.0620