



October 2021

# Student Voting Rates for Golden West College

2020 NSLVE Campus Report



Jonathan M. Tisch  
College of Civic Life



INSTITUTE FOR DEMOCRACY  
& HIGHER EDUCATION

**October 2021**

**Dear Colleagues:**

We are pleased to send this tailored report containing your students' voting rates for 2020. This report contains three years of relevant topline data: 2016, 2018, and 2020. As always, we disaggregate the data so you can better identify and address gaps in participation.

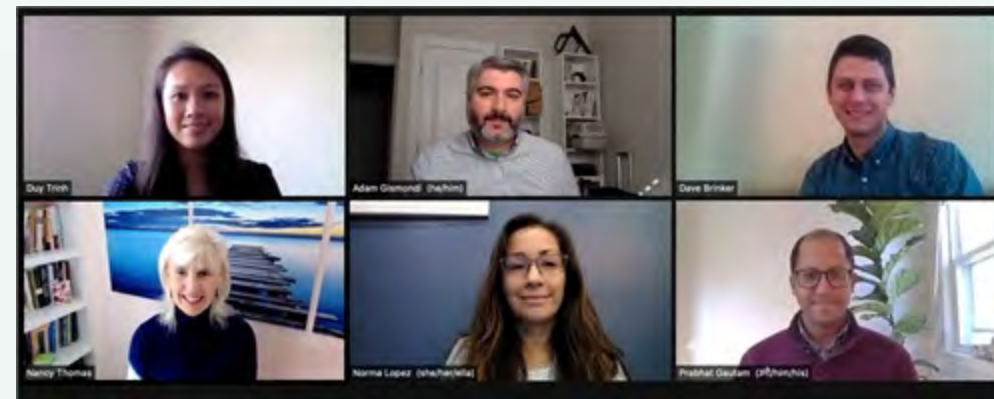
College and university students participated in record-breaking numbers in the 2020 election. In 2016, the Average Institutional Voting Rate was 53%. This year, it jumped to 66%. We encourage you to review Democracy Counts 2020, our most recent national report.

As in past years, we urge you to share this report widely and strategically, particularly with faculty who, in 2020, were often the most consistent communicators with students about ever-changing voting conditions and deadlines. We also urge you to review our recommendations for engaging elections to cultivate a robust and healthy campus climate for political engagement, discourse, equity, and participation: Election Imperatives (2019) and the more recent Election Imperatives: A Time of Physical Distancing and Social Action. Since "pervasive political discussions" and attentiveness to the campus culture around speech and academic freedom are among our top recommendations, we direct you to our discussion guides on talking about your NSLVE report, on free speech and inclusion, and on hot topics, our Making Sense of ... guides.

Finally, we always encourage you to work with us. Help us help you get better data by reaching out. Email [IDHE@Tufts.edu](mailto:IDHE@Tufts.edu) for more information. And as always, watch your inbox for our periodic newsletter, IDHE Update, for announcements about upcoming releases and new resources.

Congratulations on engaging your students in the 2020 election. Remember, student political learning is a year-round objective. Elections may be episodic, but student political engagement should not be.

All the Best,  
IDHE Team

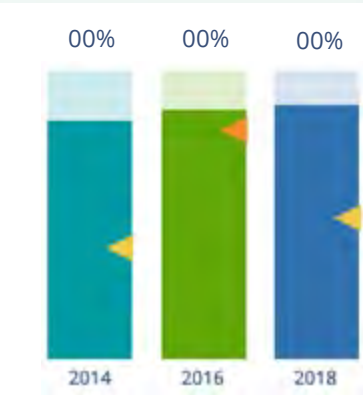


**(Top Row from left) Duy Trinh, Program Administrator; Adam Gismondi, Director of Impact; Dave Brinker, Senior Researcher;**  
**(Bottom Row from left) Nancy Thomas, Director; Norma López, Postdoctoral Scholar; Prabhat Gautam, Data Manager.**

We also want to acknowledge and thank **Syed Golam Mohaimen, M.S. student in Data Science at Tufts University** for his contributions toward the creation of these reports.

# In This Report

This report presents data on student voter participation rates for your campus. The topline counts on page 5 tells you how many students voted, but we encourage you to look carefully at the data on subsequent pages to learn who voted. Data are presented in the form of vessel charts, overlapping donut charts, and tables.



**Vessel Chart**

This chart shows rates out of 100%, with arrows to the right of each bar representing relevant national averages (medians), which you can find in IDHE's national report Democracy Counts 2020.

	2014			2018			2014-2018 Change (p.p.)
	Enrolled	Voted	Rate (%)	Enrolled	Voted	Rate (%)	
Asian	-	-	-	-	-	-	-
American Indian/ Alaska Native	-	-	-	-	-	-	-
Black	-	-	-	-	-	-	-
Hispanic	-	-	-	-	-	-	-

## Tables

The tables show, on the left-side columns, the numbers of students and the rates from 2016, 2018, and 2020. On the left-side, percentage point (p.p.) changes between 2016 and 2020. A red down arrow indicates a decrease, a green up arrow indicates an increase, and a yellow arrow pointing to the right indicates no change. "-" in these tables indicates that the data is unavailable/missing, or is available for 10 or less students.



**Overlapping Donut Chart**

This chart is used to show the breakdown of vote method utilization (page 10), with the outer ring showing your campus method utilization and the inner ring showing the national breakdown. These are described in percentages.

# Voting, Registration and Yield Rates

YOUR INSTITUTION

56.7%

2020 Voting Rate

+13.2

Change From 2016

ALL INSTITUTIONS

66%

2020 Voting Rate

REGISTRATION RATE

Year	2016	2018	2020
Rate	65.0%	64.0%	71.1%

The **Registration Rate** is the percent of your voting-eligible students who registered to vote.

VOTING RATE OF REGISTERED STUDENTS

Year	2016	2018	2020
Rate	67.0%	55.2%	79.7%

The **Voting Rate of Registered Students** is the percent of registered students who voted on Election Day. We often refer to this as the “yield” rate.

VOTING RATE

Year	2016	2018	2020
Rate	43.5%	35.3%	56.7%

The **Voting Rate** is the percentage of eligible students who voted on Election Day. The voting rate is also the product of the registration and yield rates.

# Looking Closer

## Voting and Registration Rates

	2016	2018	2020	2016-2020 Change (p.p.)
Total Student Enrollment	10,980	10,922	10,039	↓ -941
(Age under 18/Unknown)	-	-	-	-
(IPEDS estimated non-resident aliens)	274	280	257	↓ -16
(FERPA records blocked)	-	-	-	-
(Non-Degree Seeking Students)	868	680	-	-
Total eligible voters	9,836	9,955	9,779	↓ -57
Number of students who registered	6,391	6,371	6,953	↑ 562
Number of students who voted	4,282	3,517	5,542	↑ 1,260
Registration Rate %	65	64	71	↑ 6
Voting Rate of Registered Students %	67	55	80	↑ 13
Voting Rate %	44	35	57	↑ 13

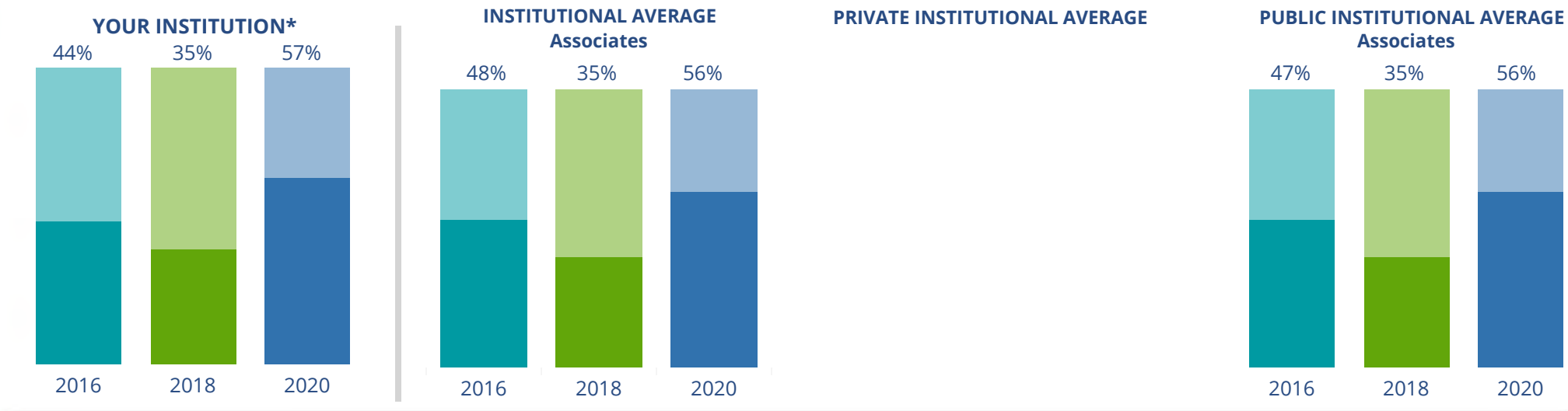
**This page provides the numbers we used to calculate your voting, registration, and yield rates.** The sub-categories under total student enrollment are the adjustments that we make to account for students who are ineligible to vote due to age or citizenship status. We also exclude, when correctly flagged, students who are not pursuing degrees.

We use IPEDS-derived estimates of NRAs when institutions do not submit non-resident alien status data to NSC, or we cannot verify the accuracy of the reported counts. This estimate is given by "IPEDS estimated non-resident aliens" on this page. If you believe the number of international students reported on this report is incorrect, you can manually adjust your institution's voting rates by using our recalculation tool. <https://id-he.tufts.edu/nsive/nsive-recalculation-tool>.

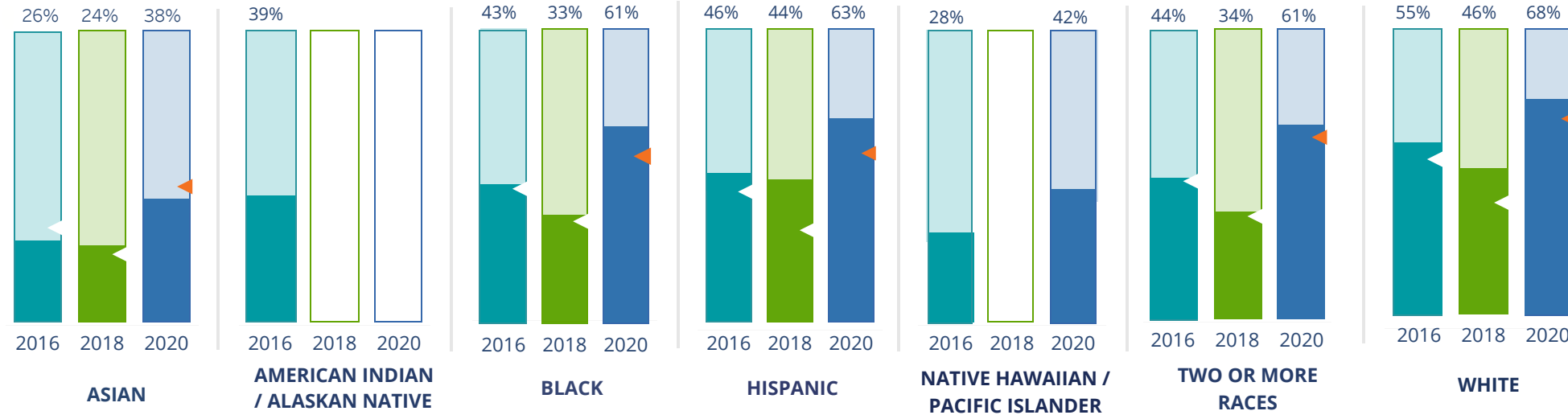
# By Institution Types



These are estimated voting rates of your institution compared to the average voting rates of similar institutions in NSLVE. \*"Your Institution" chart is presented at a different scale.



## By Race / Ethnicity



**These are estimated voting rates for race / ethnicity groups.** These classifications are provided by campuses and are obtained following race reporting procedures\* defined by the National Center for Education Statistics of the Institute of Education Sciences (IES). Please see our FAQ for more detail on why we cannot report national benchmark for some of the demographic groups:

<https://tufts.app.box.com/v/idhe-nsve-report-faq>

If you notice unavailable/missing data in this page, it could mean any of the following for your institution: (i) does not report this data; (ii) did not provide this data in past years; (iii) does not separately submit data for one or more of the demographic groups, or (iv) the data is reported for 10 or fewer students.

\* <https://nces.ed.gov/ipeds/report-your-data/race-ethnicity-collecting-data-for-reporting-purposes>



# Looking Closer

## By Race/Ethnicity

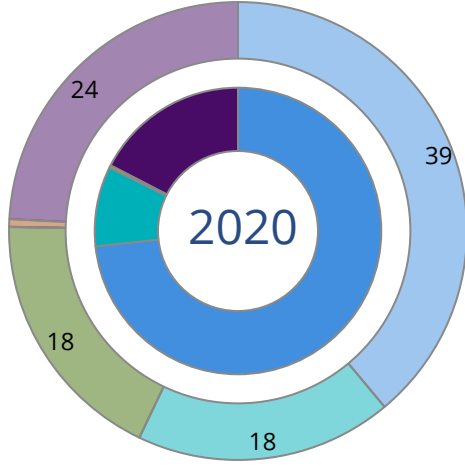
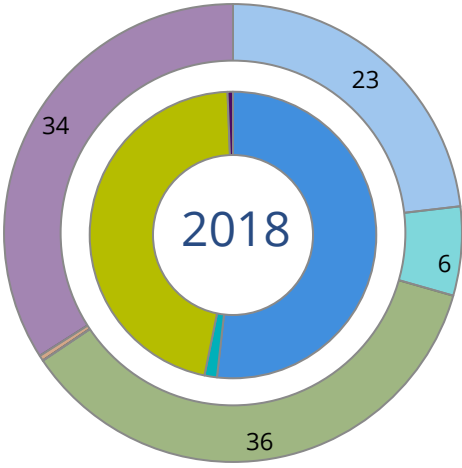
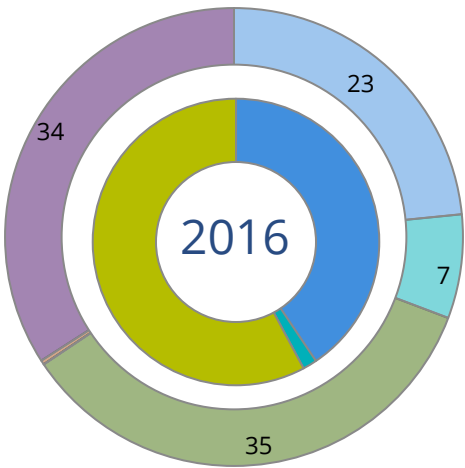
**This page provides the numbers we used to calculate race / ethnicity group voting rates.** We include the counts of students and the change in rates between the two most recent comparable election years. If you notice unavailable/missing data in this page, it could mean any of the following for your institution: (i) does not report this data; (ii) did not provide this data in past years; (iii) does not separately submit data for one or more of the demographic groups, or (iv) the data is reported for 10 or fewer students.

	2016			2018			2020			2016-2020 Change (p.p)
	Enrolled	Voted	Rate	Enrolled	Voted	Rate	Enrolled	Voted	Rate	
Asian	2,847	727	26	1,009	243	24	2,969	1,131	38	↑ 13
American Indian/ Alaska Native	28	11	39	-	-	-	14	-	-	-
Black	188	81	43	39	13	33	198	120	61	↑ 18
Hispanic	3,356	1,552	46	1,234	543	44	3,357	2,104	63	↑ 16
Native Hawaiian/ Pacific Islander	46	13	28	12	-	-	43	18	42	↑ 14
2 or More Races	491	217	44	169	57	34	499	306	61	↑ 17
White	3,027	1,651	55	960	445	46	2,604	1,777	68	↑ 14
Race Unknown	102	30	29	6,781	2,211	33	349	76	22	↓ -8



# By Voting Method

Not-In-Person Early Vote In-Person Other Provisional Unknown



	2016		2018		2020		2016-2020	
	Voted	Rate	Voted	Rate	Voted	Rate	Change (p.p.)	
Early Vote	68	2	50	1	500	9	7	↑
In-Person on Election Day	2,475	58	1,626	46	14	0	-58	↓
Not-In-Person	1,739	41	1,821	52	4,064	73	33	↑
Other	-	-	-	-	-	-	-	
Provisional	-	-	-	-	-	-	-	
Voting Method Unknown	-	-	20	1	964	17	-	

These are estimated rates for vote method utilization, the number of students utilizing each method, and the percent of students utilizing each method. Not all U.S. states provide information on vote method; voting method for voter files from these states are classified "Voting Method Unknown." For a list of these states, see our FAQ. <https://idhe.tufts.edu/nsive/nsive-faq#CampusReports>

# By Age Group

	2016	2018	2020
18-21	40%	32%	56%
22-24	43%	34%	54%
25-29	41%	35%	55%
30-39	49%	37%	55%
40-49	55%	49%	56%
50+	62%	54%	58%

**Voting is habit-forming and young voters will usually continue as voters in subsequent elections.** Also, young voters are more likely to be contacted by campaigns and are visible, and therefore significant, to elected officials. While in the past, we have seen voting rates increase across age groups, in recent cycles, the most significant increases have been among first-time and the youngest voters. Some colleges serve primarily young students, traditionally viewed as students in the 18-21 or 22-24 categories here. Others have much higher numbers of enrolled older undergraduate or graduate students.

# Looking Closer

## By Age Group

Here, we provide the numbers of students in each age category and the voting rates for each group. These are based on the student's age on the day of the election, as calculated by the National Student Clearinghouse using data from student enrollment records.

	2016			2018			2020			2016-2020 Change (p.p)
	Enrolled	Voted	Rate	Enrolled	Voted	Rate	Enrolled	Voted	Rate	
18-21	4,862	1,921	40	5,061	1,615	32	5,109	2,838	56	↑ 16
22-24	2,169	936	43	1,987	668	34	1,814	986	54	↑ 11
25-29	1,539	632	41	1,649	584	35	1,556	852	55	↑ 14
30-39	917	447	49	922	345	37	981	539	55	↑ 6
40-49	321	175	55	315	155	49	312	175	56	↑ 2
50+	277	171	62	278	150	54	261	152	58	↓ -3

# Looking Closer

## By Sex

	2016			2018			2020			2016-2020	
	Enrolled	Voted	Rate	Enrolled	Voted	Rate	Enrolled	Voted	Rate	Change (p.p)	
Female	5,317	2,365	44	1,859	757	41	5,722	3,350	59	↑	14
Male	4,565	1,817	40	1,521	532	35	4,089	2,084	51	↑	11

**These are estimated voting rates for sex groups and the numbers we used to calculate their voting rates.** These classifications are provided by campuses and are obtained following the reporting procedures defined by the National Center for Education Statistics (NCES) of the Institute of Education Sciences (IES). Presently, NCES requires institutions to report students as “Male” or “Female” only.\*

If you notice missing data in this page, it could mean any of the following for your institution: (i) does not report this data; (ii) did not provide this data in past years; (iii) does not separately submit data for one or more of the demographic groups, or (iv) the data is reported for 10 or fewer students.

\*<https://surveys.nces.ed.gov/ipeds/public/survey-materials/faq?faqid=11>

# Looking Closer

## By Education Level / Undergraduate Class Year

	2016			2018			2020			2016-2020	
	Enrolled	Voted	Rate (%)	Enrolled	Voted	Rate (%)	Enrolled	Voted	Rate (%)	Change (p.p)	
EDUCATION LEVEL											
Undergraduate	9,937	4,218	42	10,043	3,449	34	9,513	5,278	55	↑	13
Graduate	-	-	-	-	-	-	-	-	-	-	-
Class Unknown	148	64	43	169	68	40	520	264	51	↑	8
CLASS YEAR											
First Year	6,936	41	2,829	-	-	-	6,825	54	3,698	↑	13
Second Year	3,148	46	1,452	-	-	-	3,102	59	1,833	↑	13
Upper Level	-	-	-	-	-	-	-	-	-	-	-
ENROLLMENT STATUS											
Full-time	3,646	1,415	39	3,683	1,111	30	4,731	2,453	52	↑	13
Part-time	6,439	2,867	45	6,529	2,406	37	5,302	3,089	58	↑	14

These are estimated voting rates by Education Level (undergraduate/graduate), Class Year, and Enrollment Status (full-time/part-time), and the numbers we used to calculate these rates.

If you notice missing data in this page, it could mean any of the following for your institution: (i) does not report this data; (ii) did not provide this data in past years; (iii) does not separately submit data for one or more of the demographic groups, or (iv) the data is reported for 10 or fewer students.

## By Field of Study

FIELDS	2016			2018			2020			2016-2020
	Enrolled	Voted	Rate	Enrolled	Voted	Rate	Enrolled	Voted	Rate	Change (p.p)
Architecture	-	-	-	-	-	-	13	-	-	-
Biological and Biomedical Sciences	312	110	35	333	105	32	548	323	59	↑ 24
Business, Management, and Marketing	1,312	521	40	1,319	394	30	1,545	760	49	↑ 9
Communication and Journalism	240	118	49	246	98	40	265	180	68	↑ 19
Communications Technologies/Technicians	91	35	38	73	20	27	73	44	60	↑ 22
Computer and Information Sciences	109	41	38	167	43	26	421	203	48	↑ 11
Construction Trades	-	-	-	-	-	-	12	-	-	-

**These are estimated voting rates by field of study, and the numbers we used to calculate the field of study rates.** For an explanation of CIP codes, please see our FAQ.\* There are roughly 8,000 fields of study among U.S. colleges and universities, so we provide rates for condensed categories.

\*<https://tufts.app.box.com/v/idhe-nslve-report-faq>

## By Field of Study

FIELDS	2016			2018			2020			2016-2020 Change (p.p)
	Enrolled	Voted	Rate	Enrolled	Voted	Rate	Enrolled	Voted	Rate	
Education	43	19	44	–	–	–	51	27	53	↑ 9
Engineering and Engineering Technologies	114	49	43	32	12	38	110	54	49	↑ 6
English Language and Literature	152	70	46	149	66	44	141	90	64	↑ 18
Family and Consumer/Human Sciences	–	–	–	–	–	–	81	46	57	–
Foreign Languages, Literatures, and Lingui..	156	89	57	174	86	49	166	106	64	↑ 7
Health Professions	1,177	479	41	1,503	537	36	1,519	884	58	↑ 17
History	117	75	64	111	56	50	127	87	69	↑ 4
Law Enforcement, Firefighting, and Protec..	581	256	44	653	233	36	517	307	59	↑ 15
Legal Professions and Studies	–	–	–	–	–	–	–	–	–	–
Liberal Arts and Sciences, and Humanities	2,729	1,163	43	2,257	758	34	1,254	689	55	↑ 12
Mathematics and Statistics	186	58	31	202	63	31	203	109	54	↑ 23
Mechanic and Repair Technologies/Techni..	127	35	28	131	28	21	149	61	41	↑ 13
Multi/Interdisciplinary Studies	749	291	39	715	218	30	509	273	54	↑ 15
Parks, Recreation, Leisure, and Fitness Stu..	252	104	41	270	89	33	278	166	60	↑ 18



## By Field of Study

FIELDS	2016			2018			2020			2016-2020	
	Enrolled	Voted	Rate	Enrolled	Voted	Rate	Enrolled	Voted	Rate	Change (p.p)	
Personal and Culinary Services	83	37	45	140	42	30	115	75	65	↑	21
Philosophy and Religious Studies	21	13	62	15	–	–	18	–	–		–
Physical Sciences	140	47	34	203	50	25	185	73	39	↑	6
Precision Production	–	–	–	–	–	–	–	–	–		–
Psychology	499	248	50	546	214	39	620	373	60	↑	10
Public Administration and Social Service Professions	–	–	–	–	–	–	–	–	–		–
Social Sciences	289	160	55	308	126	41	349	203	58	↑	3
Visual and Performing Arts	369	158	43	435	172	40	456	268	59	↑	16
Unknown	177	71	40	184	78	42	263	100	38	↓	-2

# About This Report

## Thank you for participating in the National Study of Learning, Voting, and Engagement.

Since NSLVE's launch in 2013, nearly 1,200 colleges and universities have signed up to receive their voting rates for the 2012, 2014, 2016, 2018, and 2020 federal elections.

Along with others, your institution's participation in this study has allowed us to build a robust database of over 50 million college student records, about 10 million for each election year, that serve as a foundation for innovative research on college student political learning and engagement in democracy.

NSLVE is a signature initiative of the Institute for Democracy and Higher Education (IDHE) at Tufts University's Jonathan M. Tisch College of Civic Life. The mission of IDHE is to shift college and university priorities and culture to advance political learning, agency, and equity. We achieve our mission through research, resource development, technical assistance, and advocacy.

### About the Data

The voter registration and voting rates in this report reflect the percentage of your institution's students who were eligible to vote and who actually voted in the 2016, 2018, and 2020 elections.

These results are based on enrollment records your institution submitted to the National Student Clearinghouse (NSC) and publicly available voting files collected by L2 Political.

Enrollment lists are adjusted by deducting students under age 18 (at the time of the election), people identified as non-degree seeking and those identified by campuses as "nonresident aliens" (NRAs) (the federal government's category for mostly international students). Unfortunately, not all campuses report NRAs to NSC. For those campuses, we use IPEDS to calculate the number of NRA students on each campus and adjust NSC enrollment numbers to estimate the number of students to remove. We also quality check NRA removals by verifying that there is little to no discrepancy between the number of international students reported by the campus to IPEDS and to NSC. We cannot adjust subgroup analyses absent identification of NRAs verified by the process above. We welcome closer partnerships with individual colleges and universities to provide more accurate rates. For more on the data and the matching process, see our FAQ on Campus Reports.

Golden West College

Thank you for the work you do to improve your students' political learning and engagement. We hope that you find your NSLVE report useful. For up-to-date news on NSLVE data, resources, and to sign up for our newsletter visit: <https://idhe.tufts.edu>.

References: IDHE encourages report recipients to share this report as broadly as possible, including posting it on the college or university's website. When doing so, please use the following citation: Institute for Democracy & Higher Education: National Study of Learning, Voting and Engagement. (2021). 2016, 2018, and 2020 report for \_\_\_\_\_ [name of institution]. Medford, MA.



Barnum Hall  
163 Packard Ave.  
Medford, MA 02155

tischcollege@tufts.edu  
617.627.3453



Institute for Democracy & Higher Education:  
National Study of Learning, Voting, and Engagement  
Barnum Hall, Medford, MA 02155

Follow Us on Twitter: @TuftsIDHE  
NSLVE@tufts.edu  
617.627.0620