



October 2021

Student Voting Rates for Georgia State University

2020 NSLVE Campus Report

October 2021

Dear Colleagues:

We are pleased to send this tailored report containing your students' voting rates for 2020. This report contains three years of relevant topline data: 2016, 2018, and 2020. As always, we disaggregate the data so you can better identify and address gaps in participation.

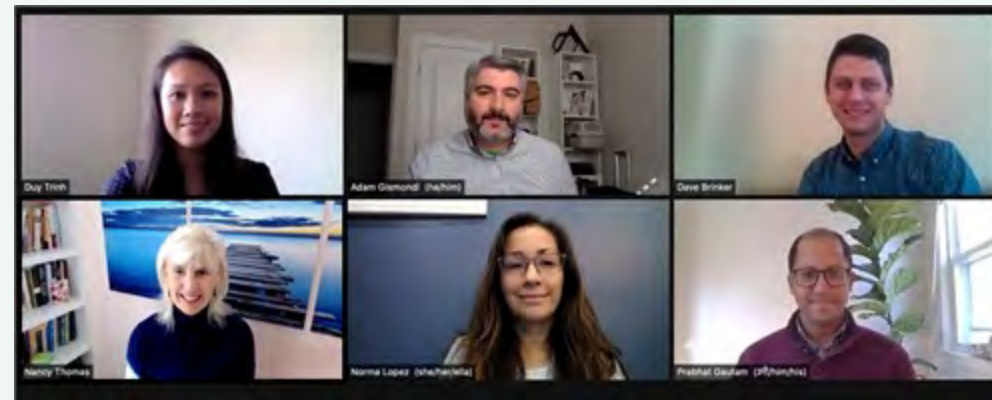
College and university students participated in record-breaking numbers in the 2020 election. In 2016, the Average Institutional Voting Rate was 53%. This year, it jumped to 66%. We encourage you to review Democracy Counts 2020, our most recent national report.

As in past years, we urge you to share this report widely and strategically, particularly with faculty who, in 2020, were often the most consistent communicators with students about ever-changing voting conditions and deadlines. We also urge you to review our recommendations for engaging elections to cultivate a robust and healthy campus climate for political engagement, discourse, equity, and participation: Election Imperatives (2019) and the more recent Election Imperatives: A Time of Physical Distancing and Social Action. Since "pervasive political discussions" and attentiveness to the campus culture around speech and academic freedom are among our top recommendations, we direct you to our discussion guides on talking about your NSLVE report, on free speech and inclusion, and on hot topics, our Making Sense of ... guides.

Finally, we always encourage you to work with us. Help us help you get better data by reaching out. Email IDHE@Tufts.edu for more information. And as always, watch your inbox for our periodic newsletter, IDHE Update, for announcements about upcoming releases and new resources.

Congratulations on engaging your students in the 2020 election. Remember, student political learning is a year-round objective. Elections may be episodic, but student political engagement should not be.

All the Best,
IDHE Team



(Top Row from left) Duy Trinh, Program Administrator; Adam Gismondi, Director of Impact; Dave Brinker, Senior Researcher;
(Bottom Row from left) Nancy Thomas, Director; Norma López, Postdoctoral Scholar; Prabhat Gautam, Data Manager.

We also want to acknowledge and thank **Syed Golam Mohaimen, M.S. student in Data Science at Tufts University** for his contributions toward the creation of these reports.

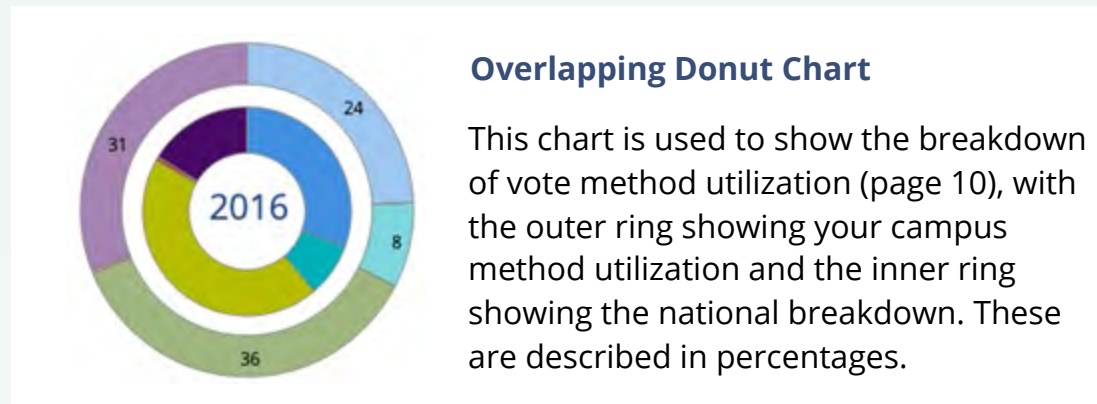
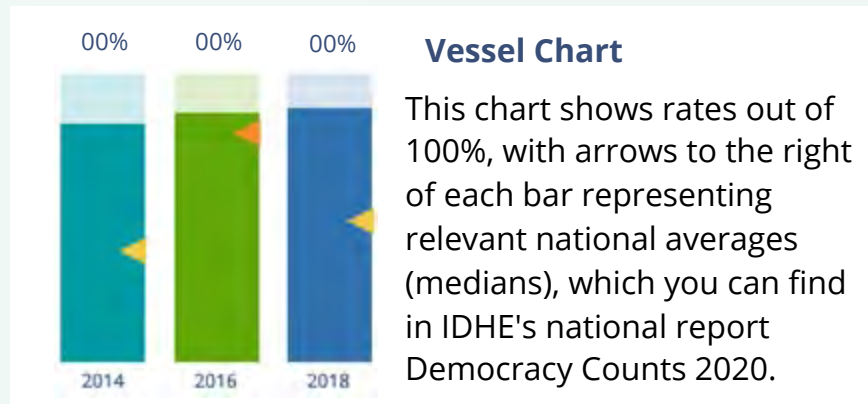
In This Report

This report presents data on student voter participation rates for your campus. The topline counts on page 5 tells you how many students voted, but we encourage you to look carefully at the data on subsequent pages to learn who voted. Data are presented in the form of vessel charts, overlapping donut charts, and tables.

	2014			2018			2014-2018
	Enrolled	Voted	Rate (%)	Enrolled	Voted	Rate (%)	Change (p.p.)
Asian	-	-	-	-	-	-	-
American Indian/ Alaska Native	-	-	-	-	-	-	-
Black	-	-	-	-	-	-	-
Hispanic	-	-	-	-	-	-	-

Tables

The tables show, on the left-side columns, the numbers of students and the rates from 2016, 2018, and 2020. On the left-side, percentage point (p.p.) changes between 2016 and 2020. A red down arrow indicates a decrease, a green up arrow indicates an increase, and a yellow arrow pointing to the right indicates no change. "-" in these tables indicates that the data is unavailable/missing, or is available for 10 or less students.



Voting, Registration and Yield Rates

YOUR INSTITUTION

69.6%
2020 Voting Rate

+14.0
Change From 2016

ALL INSTITUTIONS

66%
2020 Voting Rate

REGISTRATION RATE

Year	Registration Rate
2016	76.9%
2018	82.1%
2020	87.7%

The **Registration Rate** is the percent of your voting-eligible students who registered to vote.

VOTING RATE OF REGISTERED STUDENTS

Year	Voting Rate of Registered Students
2016	72.3%
2018	65.1%
2020	79.3%

The **Voting Rate of Registered Students** is the percent of registered students who voted on Election Day. We often refer to this as the “yield” rate.

VOTING RATE

Year	Voting Rate
2016	55.6%
2018	53.4%
2020	69.6%

The **Voting Rate** is the percentage of eligible students who voted on Election Day. The voting rate is also the product of the registration and yield rates.

Looking Closer

Voting and Registration Rates

	2016	2018	2020	2016-2020 Change (p.p.)
Total Student Enrollment	47,500	49,050	49,273	↑ 1,773
(Age under 18/Unknown)	-	-	-	-
(IPEDS estimated non-resident aliens)	2,721	2,694	2,643	↓ -78
(FERPA records blocked)	37	26	16	↓ -21
(Non-Degree Seeking Students)	-	1,024	-	-
Total eligible voters	44,742	45,304	46,613	↑ 1,870
Number of students who registered	34,406	37,203	40,898	↑ 6,492
Number of students who voted	24,877	24,202	32,425	↑ 7,548
Registration Rate %	77	82	88	↑ 11
Voting Rate of Registered Students %	72	65	79	↑ 7
Voting Rate %	56	53	70	↑ 14

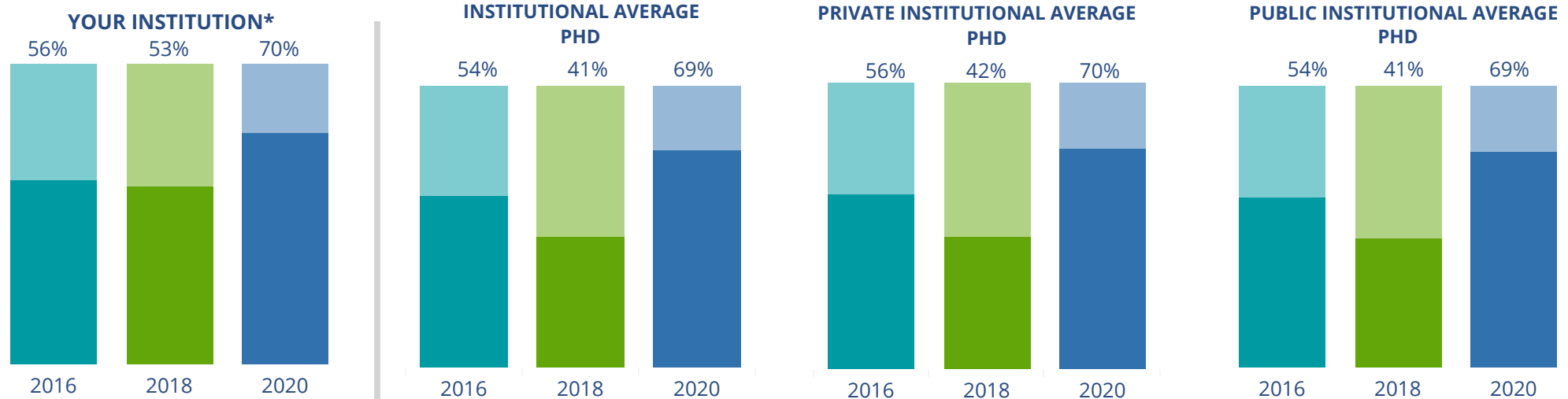
This page provides the numbers we used to calculate your voting, registration, and yield rates. The sub-categories under total student enrollment are the adjustments that we make to account for students who are ineligible to vote due to age or citizenship status. We also exclude, when correctly flagged, students who are not pursuing degrees.

We use IPEDS-derived estimates of NRAs when institutions do not submit non-resident alien status data to NSC, or we cannot verify the accuracy of the reported counts. This estimate is given by "IPEDS estimated non-resident aliens" on this page. If you believe the number of international students reported on this report is incorrect, you can manually adjust your institution's voting rates by using our recalculation tool. <https://id-he.tufts.edu/nslve/nslve-recalculation-tool>.

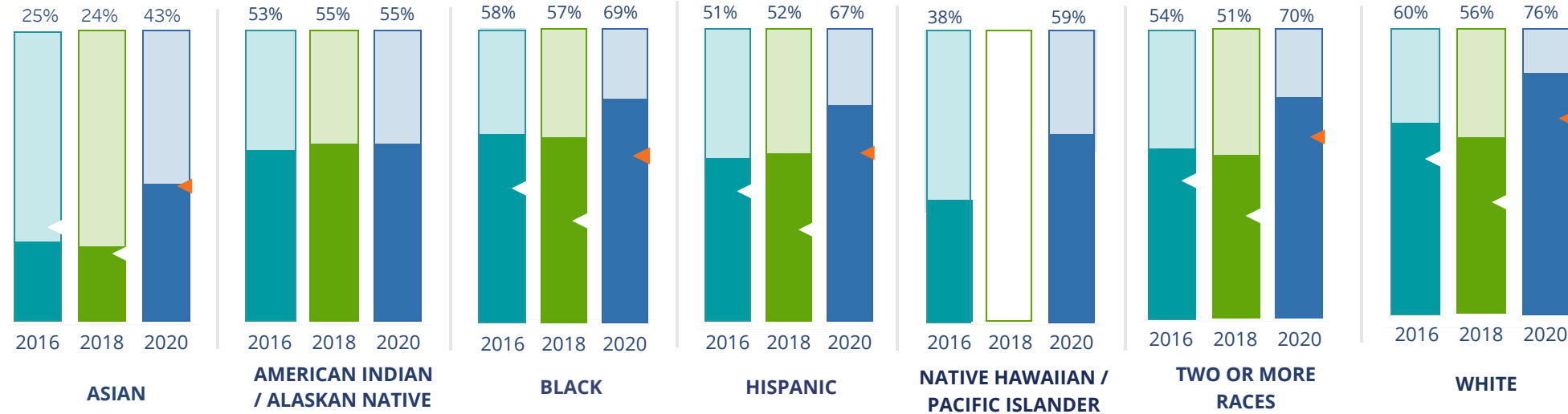
By Institution Types



These are estimated voting rates of your institution compared to the average voting rates of similar institutions in NSLVE. *"Your Institution" chart is presented at a different scale.



By Race / Ethnicity



These are estimated voting rates for race / ethnicity groups. These classifications are provided by campuses and are obtained following race reporting procedures* defined by the National Center for Education Statistics of the Institute of Education Sciences (IES). Please see our FAQ for more detail on why we cannot report national benchmark for some of the demographic groups:

<https://tufts.app.box.com/v/idhe-nslve-report-faq>

If you notice unavailable/missing data in this page, it could mean any of the following for your institution: (i) does not report this data; (ii) did not provide this data in past years; (iii) does not separately submit data for one or more of the demographic groups, or (iv) the data is reported for 10 or fewer students.

* <https://nces.ed.gov/ipeds/report-your-data/race-ethnicity-collecting-data-for-reporting-purposes>

Looking Closer

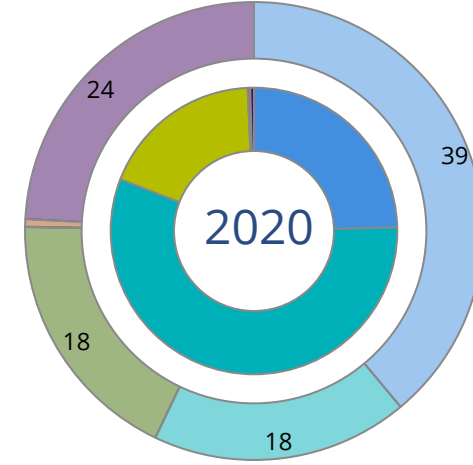
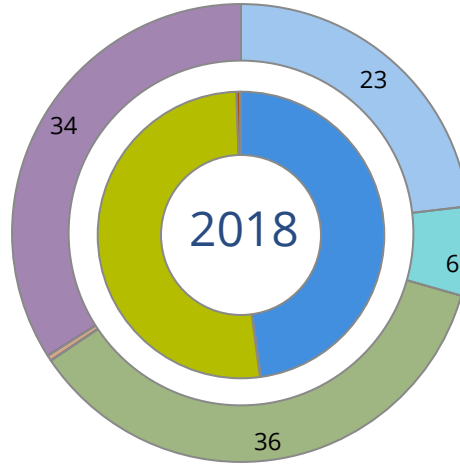
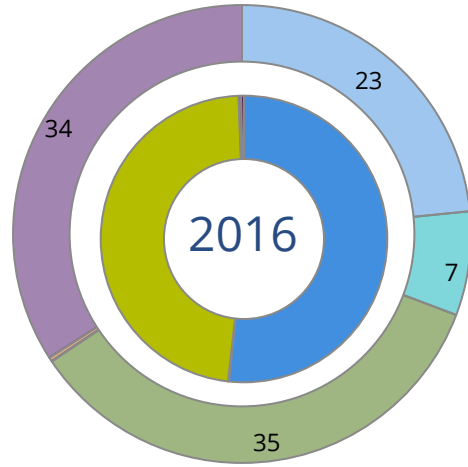
By Race/Ethnicity

This page provides the numbers we used to calculate race / ethnicity group voting rates. We include the counts of students and the change in rates between the two most recent comparable election years. If you notice unavailable/missing data in this page, it could mean any of the following for your institution: (i) does not report this data; (ii) did not provide this data in past years; (iii) does not separately submit data for one or more of the demographic groups, or (iv) the data is reported for 10 or fewer students.

	2016			2018			2020			2016-2020 Change (p.p)
	Enrolled	Voted	Rate	Enrolled	Voted	Rate	Enrolled	Voted	Rate	
Asian	6,618	1,642	25	6,830	1,614	24	7,416	3,159	43	↑ 18
American Indian/ Alaska Native	77	41	53	56	31	55	47	26	55	↑ 2
Black	19,033	11,052	58	19,672	11,203	57	20,064	13,885	69	↑ 11
Hispanic	4,873	2,469	51	5,667	2,961	52	6,513	4,347	67	↑ 16
Native Hawaiian/ Pacific Islander	34	13	38	29	-	-	29	17	59	↑ 20
2 or More Races	2,478	1,331	54	2,758	1,415	51	2,721	1,891	69	↑ 16
White	13,025	7,858	60	11,884	6,643	56	11,617	8,855	76	↑ 16
Race Unknown	1,229	471	38	952	326	34	734	245	33	↓ -5

By Voting Method

■ Not-In-Person
 ■ Early Vote
 ■ In-Person
 ■ Other
 ■ Provisional
 ■ Unknown



	2016		2018		2020		2016-2020	
	Voted	Rate	Voted	Rate	Voted	Rate	Change (p.p.)	
Early Vote	20	0	15	0	18,247	56	56	↑
In-Person on Election Day	11,849	48	12,491	52	5,979	18	-29	↓
Not-In-Person	12,873	52	11,561	48	7,971	25	-27	↓
Other	-	-	-	-	-	-	-	-
Provisional	65	0	103	0	86	0	0	→
Voting Method Unknown	70	0	32	0	142	0	0	↑

These are estimated rates for vote method utilization, the number of students utilizing each method, and the percent of students utilizing each method. Not all U.S. states provide information on vote method; voting method for voter files from these states are classified "Voting Method Unknown." For a list of these states, see our FAQ. <https://idhe.tufts.edu/nslve/nslve-faq#CampusReports>

By Age Group

	2016	2018	2020
18-21	51%	49%	66%
22-24	50%	50%	65%
25-29	51%	48%	62%
30-39	57%	55%	65%
40-49	70%	66%	76%
50+	81%	77%	83%

Voting is habit-forming and young voters will usually continue as voters in subsequent elections.

Also, young voters are more likely to be contacted by campaigns and are visible, and therefore significant, to elected officials. While in the past, we have seen voting rates increase across age groups, in recent cycles, the most significant increases have been among first-time and the youngest voters. Some colleges serve primarily young students, traditionally viewed as students in the 18-21 or 22-24 categories here. Others have much higher numbers of enrolled older undergraduate or graduate students.

Looking Closer

By Age Group

Here, we provide the numbers of students in each age category and the voting rates for each group. These are based on the student's age on the day of the election, as calculated by the National Student Clearinghouse using data from student enrollment records.

	2016			2018			2020			2016-2020 Change (p.p)
	Enrolled	Voted	Rate	Enrolled	Voted	Rate	Enrolled	Voted	Rate	
18-21	21,197	10,716	51	23,393	11,410	49	25,105	16,637	66	↑ 16
22-24	10,520	5,234	50	10,089	5,006	50	9,789	6,364	65	↑ 15
25-29	7,655	3,867	51	7,124	3,416	48	6,691	4,143	62	↑ 11
30-39	5,059	2,907	57	4,575	2,500	55	4,824	3,142	65	↑ 8
40-49	1,937	1,348	70	1,757	1,166	66	1,735	1,310	76	↑ 6
50+	999	805	81	910	704	77	997	829	83	↑ 3

Looking Closer

By Sex

	2016			2018			2020			2016-2020	
	Enrolled	Voted	Rate	Enrolled	Voted	Rate	Enrolled	Voted	Rate	Change (p.p)	
Female	28,147	15,998	57	28,643	15,548	54	30,246	20,653	68	↑	11
Male	19,220	8,879	46	19,200	8,651	45	18,895	11,772	62	↑	16

These are estimated voting rates for sex groups and the numbers we used to calculate their voting rates. These classifications are provided by campuses and are obtained following the reporting procedures defined by the National Center for Education Statistics (NCES) of the Institute of Education Sciences (IES). Presently, NCES requires institutions to report students as “Male” or “Female” only.*

If you notice missing data in this page, it could mean any of the following for your institution: (i) does not report this data; (ii) did not provide this data in past years; (iii) does not separately submit data for one or more of the demographic groups, or (iv) the data is reported for 10 or fewer students.

*<https://surveys.nces.ed.gov/ipeds/public/survey-materials/faq?faqid=11>

Looking Closer

By Education Level / Undergraduate Class Year

	2016			2018			2020			2016-2020
	Enrolled	Voted	Rate (%)	Enrolled	Voted	Rate (%)	Enrolled	Voted	Rate (%)	Change (p.p)
EDUCATION LEVEL										
Undergraduate	40,038	20,775	52	41,286	20,637	50	41,173	27,041	66	↑ 14
Graduate	6,408	3,563	56	6,546	3,556	54	6,961	4,638	67	↑ 11
Class Unknown	921	173	19	16	-	-	1,007	228	23	↑ 4
CLASS YEAR										
First Year	14,541	48	6,935	14,587	45	6,563	14,004	61	8,494	↑ 13
Second Year	11,835	53	6,220	12,586	50	6,261	12,404	66	8,154	↑ 13
Upper Level	14,157	56	7,863	14,132	55	7,829	15,342	71	10,820	↑ 15
ENROLLMENT STATUS										
Full-time	29,488	14,939	51	31,703	15,609	49	33,085	21,725	66	↑ 15
Part-time	17,879	9,938	56	16,145	8,593	53	16,056	10,700	67	↑ 11

These are estimated voting rates by Education Level (undergraduate/graduate), Class Year, and Enrollment Status (full-time/part-time), and the numbers we used to calculate these rates.

If you notice missing data in this page, it could mean any of the following for your institution: (i) does not report this data; (ii) did not provide this data in past years; (iii) does not separately submit data for one or more of the demographic groups, or (iv) the data is reported for 10 or fewer students.

By Field of Study

FIELDS	2016			2018			2020			2016-2020	
	Enrolled	Voted	Rate	Enrolled	Voted	Rate	Enrolled	Voted	Rate	Change (p.p)	
Area, Ethnic, Cultural, and Gender Studies	135	99	73	137	82	60	134	96	72	↓ -2	
Biological and Biomedical Sciences	2,686	1,350	50	2,895	1,369	47	2,990	1,992	67	↑ 16	
Business, Management, and Marketing	5,982	2,879	48	5,708	2,561	45	6,169	3,977	64	↑ 16	
Communication and Journalism	1,380	873	63	1,212	765	63	996	755	76	↑ 13	
Computer and Information Sciences	2,639	1,066	40	3,100	1,173	38	3,650	2,044	56	↑ 16	
Education	2,592	1,601	62	1,885	1,233	65	1,995	1,595	80	↑ 18	
Engineering and Engineering Technologies	-	-	-	-	-	-	-	-	-	-	

These are estimated voting rates by field of study, and the numbers we used to calculate the field of study rates. For an explanation of CIP codes, please see our FAQ.* There are roughly 8,000 fields of study among U.S. colleges and universities, so we provide rates for condensed categories.

*<https://tufts.app.box.com/v/idhe-nslve-report-faq>

By Field of Study

FIELDS	2016			2018			2020			2016-2020 Change (p.p)
	Enrolled	Voted	Rate	Enrolled	Voted	Rate	Enrolled	Voted	Rate	
English Language and Literature	596	384	64	567	369	65	513	402	78	↑ 14
Family and Consumer/Human Sciences	30	24	80	-	-	-	12	-	-	-
Foreign Languages, Literatures, and Lingui..	339	212	63	313	179	57	254	198	78	↑ 15
Health Professions	2,964	1,668	56	2,330	1,312	56	2,572	1,831	71	↑ 15
History	333	215	65	278	193	69	252	202	80	↑ 16
Law Enforcement, Firefighting, and Protec..	647	384	59	661	407	62	759	523	69	↑ 10
Legal Professions and Studies	627	436	70	634	428	68	691	550	80	↑ 10
Liberal Arts and Sciences, and Humanities	16,474	8,209	50	17,942	8,420	47	17,022	10,303	61	↑ 11
Mathematics and Statistics	377	138	37	370	134	36	379	196	52	↑ 15
Multi/Interdisciplinary Studies	943	561	59	1,291	761	59	2,187	1,620	74	↑ 15
Natural Resources and Conservation	-	-	-	-	-	-	-	-	-	-
Parks, Recreation, Leisure, and Fitness Stu..	103	50	49	91	36	40	92	60	65	↑ 17
Philosophy and Religious Studies	264	139	53	230	122	53	202	134	66	↑ 14
Physical Sciences	1,129	505	45	1,030	444	43	929	570	61	↑ 17

By Field of Study

FIELDS	2016			2018			2020			2016-2020 Change (p.p)
	Enrolled	Voted	Rate	Enrolled	Voted	Rate	Enrolled	Voted	Rate	
Psychology	1,999	1,145	57	2,012	1,126	56	2,130	1,513	71	↑ 14
Public Administration and Social Service Professions	705	472	67	578	399	69	540	437	81	↑ 14
Social Sciences	2,218	1,260	57	2,279	1,347	59	2,152	1,521	71	↑ 14
Visual and Performing Arts	1,975	1,170	59	2,273	1,325	58	2,403	1,852	77	↑ 18
Unknown	119	36	30	29	14	48	42	29	69	↑ 39

About This Report

Thank you for participating in the National Study of Learning, Voting, and Engagement.

Since NSLVE's launch in 2013, nearly 1,200 colleges and universities have signed up to receive their voting rates for the 2012, 2014, 2016, 2018, and 2020 federal elections.

Along with others, your institution's participation in this study has allowed us to build a robust database of over 50 million college student records, about 10 million for each election year, that serve as a foundation for innovative research on college student political learning and engagement in democracy.

NSLVE is a signature initiative of the Institute for Democracy and Higher Education (IDHE) at Tufts University's Jonathan M. Tisch College of Civic Life. The mission of IDHE is to shift college and university priorities and culture to advance political learning, agency, and equity. We achieve our mission through research, resource development, technical assistance, and advocacy.

About the Data

The voter registration and voting rates in this report reflect the percentage of your institution's students who were eligible to vote and who actually voted in the 2016, 2018, and 2020 elections.

These results are based on enrollment records your institution submitted to the National Student Clearinghouse (NSC) and publicly available voting files collected by L2 Political.

Enrollment lists are adjusted by deducting students under age 18 (at the time of the election), people identified as non-degree seeking and those identified by campuses as "nonresident aliens" (NRAs) (the federal government's category for mostly international students). Unfortunately, not all campuses report NRAs to NSC. For those campuses, we use IPEDS to calculate the number of NRA students on each campus and adjust NSC enrollment numbers to estimate the number of students to remove. We also quality check NRA removals by verifying that there is little to no discrepancy between the number of international students reported by the campus to IPEDS and to NSC. We cannot adjust subgroup analyses absent identification of NRAs verified by the process above. We welcome closer partnerships with individual colleges and universities to provide more accurate rates. For more on the data and the matching process, see our FAQ on Campus Reports.

Georgia State University

Thank you for the work you do to improve your students' political learning and engagement. We hope that you find your NSLVE report useful. For up-to-date news on NSLVE data, resources, and to sign up for our newsletter visit: <https://idhe.tufts.edu>.

References: IDHE encourages report recipients to share this report as broadly as possible, including posting it on the college or university's website. When doing so, please use the following citation: Institute for Democracy & Higher Education: National Study of Learning, Voting and Engagement. (2021). 2016, 2018, and 2020 report for _____ [name of institution]. Medford, MA.



Barnum Hall
163 Packard Ave.
Medford, MA 02155

tischcollege@tufts.edu
617.627.3453



Institute for Democracy & Higher Education:
National Study of Learning, Voting, and Engagement
Barnum Hall, Medford, MA 02155

Follow Us on Twitter: @TuftsIDHE
NSLVE@tufts.edu
617.627.0620