



October 2021

Student Voting Rates for Georgia Institute of Technology-Main Campus

2020 NSLVE Campus Report

October 2021

Dear Colleagues:

We are pleased to send this tailored report containing your students' voting rates for 2020. This report contains three years of relevant topline data: 2016, 2018, and 2020. As always, we disaggregate the data so you can better identify and address gaps in participation.

College and university students participated in record-breaking numbers in the 2020 election. In 2016, the Average Institutional Voting Rate was 53%. This year, it jumped to 66%. We encourage you to review Democracy Counts 2020, our most recent national report.

As in past years, we urge you to share this report widely and strategically, particularly with faculty who, in 2020, were often the most consistent communicators with students about ever-changing voting conditions and deadlines. We also urge you to review our recommendations for engaging elections to cultivate a robust and healthy campus climate for political engagement, discourse, equity, and participation: Election Imperatives (2019) and the more recent Election Imperatives: A Time of Physical Distancing and Social Action. Since "pervasive political discussions" and attentiveness to the campus culture around speech and academic freedom are among our top recommendations, we direct you to our discussion guides on talking about your NSLVE report, on free speech and inclusion, and on hot topics, our Making Sense of ... guides.

Finally, we always encourage you to work with us. Help us help you get better data by reaching out. Email IDHE@Tufts.edu for more information. And as always, watch your inbox for our periodic newsletter, IDHE Update, for announcements about upcoming releases and new resources.

Congratulations on engaging your students in the 2020 election. Remember, student political learning is a year-round objective. Elections may be episodic, but student political engagement should not be.

All the Best,
IDHE Team



(Top Row from left) Duy Trinh, Program Administrator; Adam Gismondi, Director of Impact; Dave Brinker, Senior Researcher;
(Bottom Row from left) Nancy Thomas, Director; Norma López, Postdoctoral Scholar; Prabhat Gautam, Data Manager.

We also want to acknowledge and thank **Syed Golam Mohaimen, M.S. student in Data Science at Tufts University** for his contributions toward the creation of these reports.

In This Report

This report presents data on student voter participation rates for your campus. The topline counts on page 5 tells you how many students voted, but we encourage you to look carefully at the data on subsequent pages to learn who voted. Data are presented in the form of vessel charts, overlapping donut charts, and tables.



Vessel Chart

This chart shows rates out of 100%, with arrows to the right of each bar representing relevant national averages (medians), which you can find in IDHE's national report Democracy Counts 2020.

	2014			2018			2014-2018 Change (p.p.)
	Enrolled	Voted	Rate (%)	Enrolled	Voted	Rate (%)	
Asian	-	-	-	-	-	-	-
American Indian/ Alaska Native	-	-	-	-	-	-	-
Black	-	-	-	-	-	-	-
Hispanic	-	-	-	-	-	-	-

Tables

The tables show, on the left-side columns, the numbers of students and the rates from 2016, 2018, and 2020. On the left-side, percentage point (p.p.) changes between 2016 and 2020. A red down arrow indicates a decrease, a green up arrow indicates an increase, and a yellow arrow pointing to the right indicates no change. "-" in these tables indicates that the data is unavailable/missing, or is available for 10 or less students.



Overlapping Donut Chart

This chart is used to show the breakdown of vote method utilization (page 10), with the outer ring showing your campus method utilization and the inner ring showing the national breakdown. These are described in percentages.

Voting, Registration and Yield Rates

YOUR INSTITUTION

71.4%

2020 Voting Rate

+17.5

Change From 2016

ALL INSTITUTIONS

66%

2020 Voting Rate

REGISTRATION RATE

Year	Rate
2016	80.8%
2018	81.4%
2020	86.5%

The **Registration Rate** is the percent of your voting-eligible students who registered to vote.

VOTING RATE OF REGISTERED STUDENTS

Year	Rate
2016	66.7%
2018	56.6%
2020	82.4%

The **Voting Rate of Registered Students** is the percent of registered students who voted on Election Day. We often refer to this as the “yield” rate.

VOTING RATE

Year	Rate
2016	53.9%
2018	46.1%
2020	71.4%

The **Voting Rate** is the percentage of eligible students who voted on Election Day. The voting rate is also the product of the registration and yield rates.

Looking Closer

Voting and Registration Rates

	2016	2018	2020	2016-2020 Change (p.p.)
Total Student Enrollment	26,406	30,871	37,469	↑ 11,063
(Age under 18/Unknown)	–	–	–	–
(IPEDS estimated non-resident aliens)	5,948	7,461	9,395	↑ 3,447
(FERPA records blocked)	15	–	–	–
(Non-Degree Seeking Students)	–	–	–	–
Total eligible voters	20,440	23,396	28,061	↑ 7,621
Number of students who registered	16,520	19,035	24,285	↑ 7,765
Number of students who voted	11,019	10,777	20,022	↑ 9,003
Registration Rate %	81	81	87	↑ 6
Voting Rate of Registered Students %	67	57	82	↑ 16
Voting Rate %	54	46	71	↑ 17

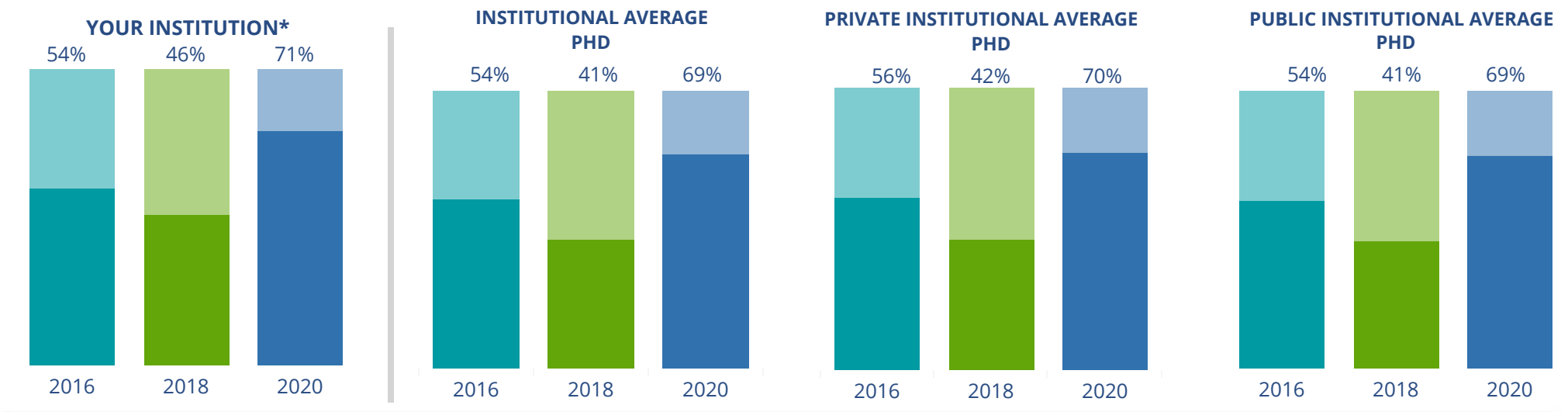
This page provides the numbers we used to calculate your voting, registration, and yield rates. The sub-categories under total student enrollment are the adjustments that we make to account for students who are ineligible to vote due to age or citizenship status. We also exclude, when correctly flagged, students who are not pursuing degrees.

We use IPEDS-derived estimates of NRAs when institutions do not submit non-resident alien status data to NSC, or we cannot verify the accuracy of the reported counts. This estimate is given by "IPEDS estimated non-resident aliens" on this page. If you believe the number of international students reported on this report is incorrect, you can manually adjust your institution's voting rates by using our recalculation tool. <https://id-he.tufts.edu/nslve/nslve-recalculation-tool>.

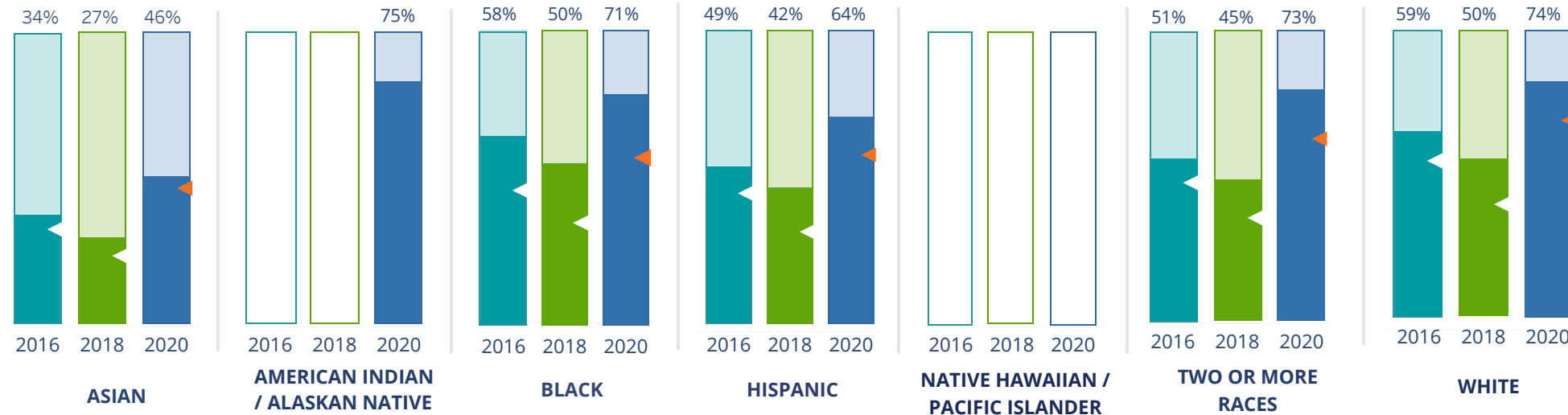
By Institution Types



These are estimated voting rates of your institution compared to the average voting rates of similar institutions in NSLVE. *"Your Institution" chart is presented at a different scale.



By Race / Ethnicity



These are estimated voting rates for race / ethnicity groups. These classifications are provided by campuses and are obtained following race reporting procedures* defined by the National Center for Education Statistics of the Institute of Education Sciences (IES). Please see our FAQ for more detail on why we cannot report national benchmark for some of the demographic groups:

<https://tufts.app.box.com/v/idhe-nslve-report-faq>

If you notice unavailable/missing data in this page, it could mean any of the following for your institution: (i) does not report this data; (ii) did not provide this data in past years; (iii) does not separately submit data for one or more of the demographic groups, or (iv) the data is reported for 10 or fewer students.

* <https://nces.ed.gov/ipeds/report-your-data/race-ethnicity-collecting-data-for-reporting-purposes>

Looking Closer

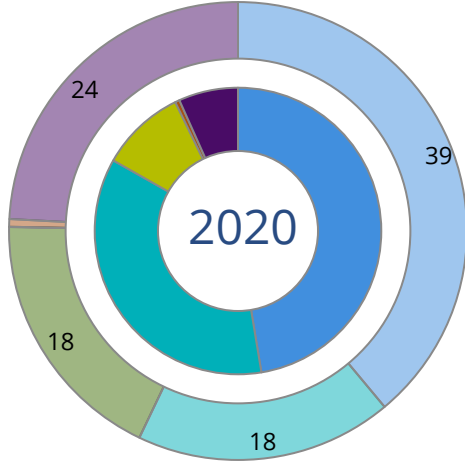
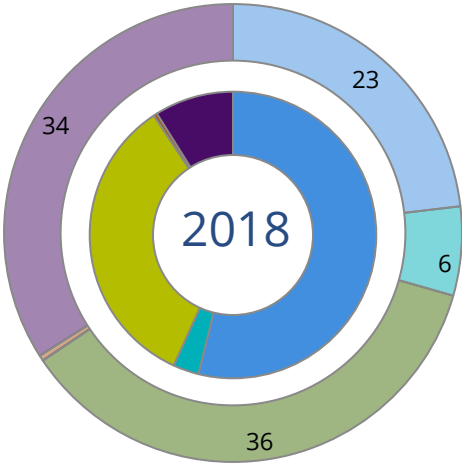
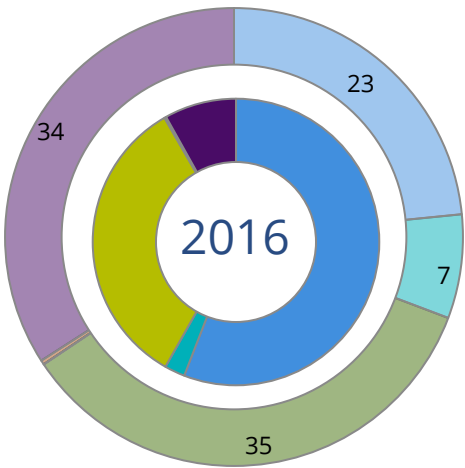
By Race/Ethnicity

This page provides the numbers we used to calculate race / ethnicity group voting rates. We include the counts of students and the change in rates between the two most recent comparable election years. If you notice unavailable/missing data in this page, it could mean any of the following for your institution: (i) does not report this data; (ii) did not provide this data in past years; (iii) does not separately submit data for one or more of the demographic groups, or (iv) the data is reported for 10 or fewer students.

	2016			2018			2020			2016-2020 Change (p.p)
	Enrolled	Voted	Rate	Enrolled	Voted	Rate	Enrolled	Voted	Rate	
Asian	4,666	1,580	34	6,469	1,749	27	9,991	4,600	46	↑ 12
American Indian/ Alaska Native	12	-	-	-	-	-	20	15	75	-
Black	1,459	851	58	1,666	831	50	1,965	1,389	71	↑ 12
Hispanic	1,537	745	48	1,968	833	42	2,525	1,608	64	↑ 15
Native Hawaiian/ Pacific Islander	13	-	-	-	-	-	15	-	-	-
2 or More Races	805	411	51	961	429	45	1,218	884	73	↑ 22
White	12,229	7,161	59	13,507	6,695	50	15,132	11,188	74	↑ 15
Race Unknown	5,553	257	5	6,130	232	4	6,417	329	5	↑ 0

By Voting Method

Not-In-Person Early Vote In-Person Other Provisional Unknown



	2016		2018		2020		2016-2020	
	Voted	Rate	Voted	Rate	Voted	Rate	Change (p.p.)	
Early Vote	253	2	315	3	7,163	36	34	↑
In-Person on Election Day	3,688	34	3,656	34	1,928	10	-24	↓
Not-In-Person	6,162	56	5,813	54	9,493	47	-9	↓
Other	-	-	-	-	-	-	-	
Provisional	17	0	39	0	92	1	0	↑
Voting Method Unknown	899	8	954	9	1,346	7	-1	↓

These are estimated rates for vote method utilization, the number of students utilizing each method, and the percent of students utilizing each method. Not all U.S. states provide information on vote method; voting method for voter files from these states are classified "Voting Method Unknown." For a list of these states, see our FAQ. <https://idhe.tufts.edu/nsive/nsive-faq#CampusReports>

By Age Group

	2016	2018	2020
18-21	48%	39%	70%
22-24	35%	31%	54%
25-29	33%	29%	41%
30-39	38%	32%	36%
40-49	62%	49%	53%
50+	78%	73%	76%

Voting is habit-forming and young voters will usually continue as voters in subsequent elections. Also, young voters are more likely to be contacted by campaigns and are visible, and therefore significant, to elected officials. While in the past, we have seen voting rates increase across age groups, in recent cycles, the most significant increases have been among first-time and the youngest voters. Some colleges serve primarily young students, traditionally viewed as students in the 18-21 or 22-24 categories here. Others have much higher numbers of enrolled older undergraduate or graduate students.

Looking Closer

By Age Group

Here, we provide the numbers of students in each age category and the voting rates for each group. These are based on the student’s age on the day of the election, as calculated by the National Student Clearinghouse using data from student enrollment records.

	2016			2018			2020			2016-2020	
	Enrolled	Voted	Rate	Enrolled	Voted	Rate	Enrolled	Voted	Rate	Change (p.p)	
18-21	11,745	5,622	48	12,373	4,853	39	13,189	9,239	70	↑	22
22-24	6,240	2,211	35	6,737	2,079	31	6,826	3,683	54	↑	19
25-29	4,584	1,524	33	6,101	1,766	29	8,373	3,397	41	↑	7
30-39	2,784	1,056	38	4,119	1,328	32	6,694	2,411	36	↓	-2
40-49	699	432	62	1,070	519	49	1,671	891	53	↓	-8
50+	222	174	78	320	232	73	530	401	76	↓	-3

Looking Closer

By Sex

	2016			2018			2020			2016-2020	
	Enrolled	Voted	Rate	Enrolled	Voted	Rate	Enrolled	Voted	Rate	Change (p.p)	
Female	8,218	3,870	47	9,633	3,812	40	11,800	6,878	58	↑	11
Male	18,041	7,148	40	21,087	6,965	33	25,483	13,144	52	↑	12

These are estimated voting rates for sex groups and the numbers we used to calculate their voting rates. These classifications are provided by campuses and are obtained following the reporting procedures defined by the National Center for Education Statistics (NCES) of the Institute of Education Sciences (IES). Presently, NCES requires institutions to report students as “Male” or “Female” only.*

If you notice missing data in this page, it could mean any of the following for your institution: (i) does not report this data; (ii) did not provide this data in past years; (iii) does not separately submit data for one or more of the demographic groups, or (iv) the data is reported for 10 or fewer students.

*<https://surveys.nces.ed.gov/ipeds/public/survey-materials/faq?faqid=11>

Looking Closer

By Education Level / Undergraduate Class Year

	2016			2018			2020			2016-2020	
	Enrolled	Voted	Rate (%)	Enrolled	Voted	Rate (%)	Enrolled	Voted	Rate (%)	Change (p.p)	
EDUCATION LEVEL											
Undergraduate	15,514	7,272	47	15,873	6,238	39	16,163	11,218	69	↑	23
Graduate	10,686	3,723	35	14,786	4,524	31	21,075	8,785	42	↑	7
Class Unknown	74	24	32	61	15	25	45	19	42	↑	10
CLASS YEAR											
First Year	-	-	-	-	-	-	-	-	-	-	-
Second Year	-	-	-	-	-	-	-	-	-	-	-
Upper Level	-	-	-	-	-	-	-	-	-	-	-
ENROLLMENT STATUS											
Full-time	20,156	8,204	41	20,663	7,092	34	20,444	12,320	60	↑	20
Part-time	6,118	2,815	46	10,057	3,685	37	16,839	7,702	46	↓	0

These are estimated voting rates by Education Level (undergraduate/graduate), Class Year, and Enrollment Status (full-time/part-time), and the numbers we used to calculate these rates.

If you notice missing data in this page, it could mean any of the following for your institution: (i) does not report this data; (ii) did not provide this data in past years; (iii) does not separately submit data for one or more of the demographic groups, or (iv) the data is reported for 10 or fewer students.

By Field of Study

FIELDS	2016			2018			2020			2016-2020
	Enrolled	Voted	Rate	Enrolled	Voted	Rate	Enrolled	Voted	Rate	Change (p.p)
Architecture	460	182	40	543	208	38	534	340	64	↑ 24
Biological and Biomedical Sciences	744	379	51	1,062	459	43	1,239	908	73	↑ 22
Business, Management, and Marketing	2,214	1,220	55	3,360	1,503	45	5,964	3,257	55	↓ 0
Communication and Journalism	245	125	51	229	119	52	264	181	69	↑ 18
Computer and Information Sciences	6,461	2,519	39	9,802	3,095	32	14,147	6,236	44	↑ 5
Engineering and Engineering Technologies	13,289	5,364	40	12,667	4,224	33	12,013	7,113	59	↑ 19
Foreign Languages, Literatures, and Linguistics	36	25	69	46	19	41	143	120	84	↑ 14

These are estimated voting rates by field of study, and the numbers we used to calculate the field of study rates. For an explanation of CIP codes, please see our FAQ.* There are roughly 8,000 fields of study among U.S. colleges and universities, so we provide rates for condensed categories.

*<https://tufts.app.box.com/v/idhe-nslve-report-faq>

By Field of Study

FIELDS	2016			2018			2020			2016-2020 Change (p.p)
	Enrolled	Voted	Rate	Enrolled	Voted	Rate	Enrolled	Voted	Rate	
Health Professions	44	27	61	37	16	43	27	18	67	↑ 5
History	52	33	63	77	43	56	82	64	78	↑ 15
Liberal Arts and Sciences, and Humanities	471	208	44	532	156	29	249	162	65	↑ 21
Mathematics and Statistics	402	105	26	507	105	21	553	226	41	↑ 15
Multi/Interdisciplinary Studies	232	150	65	307	184	60	380	292	77	↑ 12
Physical Sciences	713	302	42	790	267	34	642	377	59	↑ 16
Psychology	186	98	53	166	85	51	204	149	73	↑ 20
Public Administration and Social Service P..	118	71	60	127	87	69	164	131	80	↑ 20
Social Sciences	130	85	65	147	93	63	324	224	69	↑ 4
Visual and Performing Arts	229	99	43	257	99	39	305	204	67	↑ 24
Unknown	248	27	11	64	15	23	49	20	41	↑ 30

About This Report

Thank you for participating in the National Study of Learning, Voting, and Engagement.

Since NSLVE's launch in 2013, nearly 1,200 colleges and universities have signed up to receive their voting rates for the 2012, 2014, 2016, 2018, and 2020 federal elections.

Along with others, your institution's participation in this study has allowed us to build a robust database of over 50 million college student records, about 10 million for each election year, that serve as a foundation for innovative research on college student political learning and engagement in democracy.

NSLVE is a signature initiative of the Institute for Democracy and Higher Education (IDHE) at Tufts University's Jonathan M. Tisch College of Civic Life. The mission of IDHE is to shift college and university priorities and culture to advance political learning, agency, and equity. We achieve our mission through research, resource development, technical assistance, and advocacy.

About the Data

The voter registration and voting rates in this report reflect the percentage of your institution's students who were eligible to vote and who actually voted in the 2016, 2018, and 2020 elections.

These results are based on enrollment records your institution submitted to the National Student Clearinghouse (NSC) and publicly available voting files collected by L2 Political.

Enrollment lists are adjusted by deducting students under age 18 (at the time of the election), people identified as non-degree seeking and those identified by campuses as "nonresident aliens" (NRAs) (the federal government's category for mostly international students). Unfortunately, not all campuses report NRAs to NSC. For those campuses, we use IPEDS to calculate the number of NRA students on each campus and adjust NSC enrollment numbers to estimate the number of students to remove. We also quality check NRA removals by verifying that there is little to no discrepancy between the number of international students reported by the campus to IPEDS and to NSC. We cannot adjust subgroup analyses absent identification of NRAs verified by the process above. We welcome closer partnerships with individual colleges and universities to provide more accurate rates. For more on the data and the matching process, see our FAQ on Campus Reports.

Georgia Institute of Technology-Main Campus

Thank you for the work you do to improve your students' political learning and engagement. We hope that you find your NSLVE report useful. For up-to-date news on NSLVE data, resources, and to sign up for our newsletter visit: <https://idhe.tufts.edu>.

References: IDHE encourages report recipients to share this report as broadly as possible, including posting it on the college or university's website. When doing so, please use the following citation: Institute for Democracy & Higher Education: National Study of Learning, Voting and Engagement. (2021). 2016, 2018, and 2020 report for _____ [name of institution]. Medford, MA.



Barnum Hall
163 Packard Ave.
Medford, MA 02155

tischcollege@tufts.edu
617.627.3453



Institute for Democracy & Higher Education:
National Study of Learning, Voting, and Engagement
Barnum Hall, Medford, MA 02155

Follow Us on Twitter: @TuftsIDHE
NSLVE@tufts.edu
617.627.0620