



October 2021

Student Voting Rates for Florida State University

2020 NSLVE Campus Report

October 2021

Dear Colleagues:

We are pleased to send this tailored report containing your students' voting rates for 2020. This report contains three years of relevant topline data: 2016, 2018, and 2020. As always, we disaggregate the data so you can better identify and address gaps in participation.

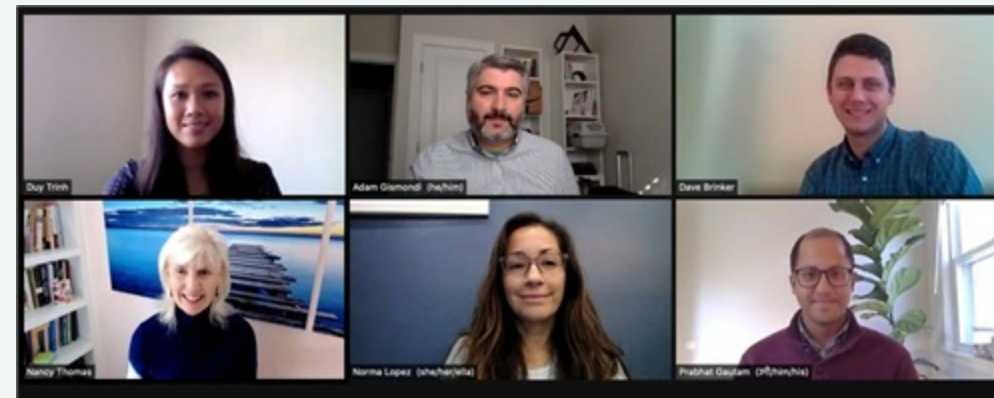
College and university students participated in record-breaking numbers in the 2020 election. In 2016, the Average Institutional Voting Rate was 53%. This year, it jumped to 66%. We encourage you to review Democracy Counts 2020, our most recent national report.

As in past years, we urge you to share this report widely and strategically, particularly with faculty who, in 2020, were often the most consistent communicators with students about ever-changing voting conditions and deadlines. We also urge you to review our recommendations for engaging elections to cultivate a robust and healthy campus climate for political engagement, discourse, equity, and participation: Election Imperatives (2019) and the more recent Election Imperatives: A Time of Physical Distancing and Social Action. Since "pervasive political discussions" and attentiveness to the campus culture around speech and academic freedom are among our top recommendations, we direct you to our discussion guides on talking about your NSLVE report, on free speech and inclusion, and on hot topics, our Making Sense of ... guides.

Finally, we always encourage you to work with us. Help us help you get better data by reaching out. Email IDHE@Tufts.edu for more information. And as always, watch your inbox for our periodic newsletter, IDHE Update, for announcements about upcoming releases and new resources.

Congratulations on engaging your students in the 2020 election. Remember, student political learning is a year-round objective. Elections may be episodic, but student political engagement should not be.

All the Best,
IDHE Team



(Top Row from left) Duy Trinh, Program Administrator; Adam Gismondi, Director of Impact; Dave Brinker, Senior Researcher; (Bottom Row from left) Nancy Thomas, Director; Norma López, Postdoctoral Scholar; Prabhat Gautam, Data Manager.

We also want to acknowledge and thank **Syed Golam Mohaimen, M.S. student in Data Science at Tufts University** for his contributions toward the creation of these reports.

In This Report

This report presents data on student voter participation rates for your campus. The topline counts on page 5 tells you how many students voted, but we encourage you to look carefully at the data on subsequent pages to learn who voted. Data are presented in the form of vessel charts, overlapping donut charts, and tables.

	2014			2018			2014-2018 Change (p.p.)
	Enrolled	Voted	Rate (%)	Enrolled	Voted	Rate (%)	
Asian	-	-	-	-	-	-	-
American Indian/ Alaska Native	-	-	-	-	-	-	-
Black	-	-	-	-	-	-	-
Hispanic	-	-	-	-	-	-	-

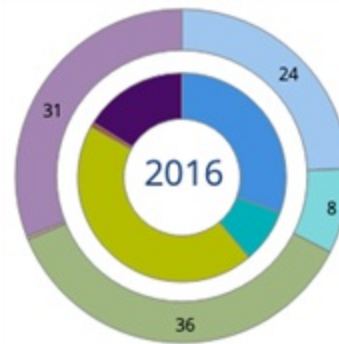
Tables

The tables show, on the left-side columns, the numbers of students and the rates from 2016, 2018, and 2020. On the left-side, percentage point (p.p.) changes between 2016 and 2020. A red down arrow indicates a decrease, a green up arrow indicates an increase, and a yellow arrow pointing to the right indicates no change. "-" in these tables indicates that the data is unavailable/missing, or is available for 10 or less students.



Vessel Chart

This chart shows rates out of 100%, with arrows to the right of each bar representing relevant national averages (medians), which you can find in IDHE's national report Democracy Counts 2020.



Overlapping Donut Chart

This chart is used to show the breakdown of vote method utilization (page 10), with the outer ring showing your campus method utilization and the inner ring showing the national breakdown. These are described in percentages.

Voting, Registration and Yield Rates

YOUR INSTITUTION

76.7%

2020 Voting Rate

+13.2

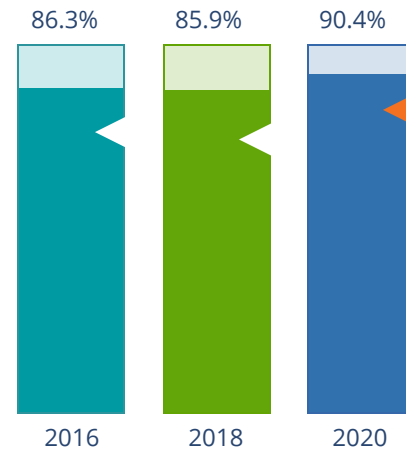
Change From 2016

ALL INSTITUTIONS

66%

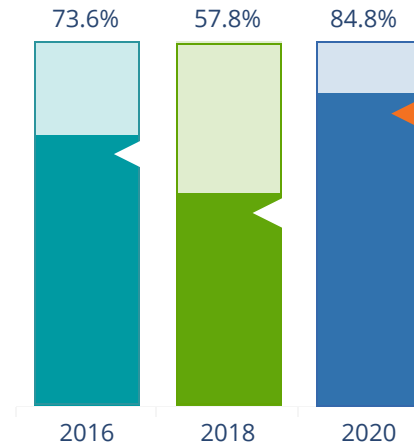
2020 Voting Rate

REGISTRATION RATE



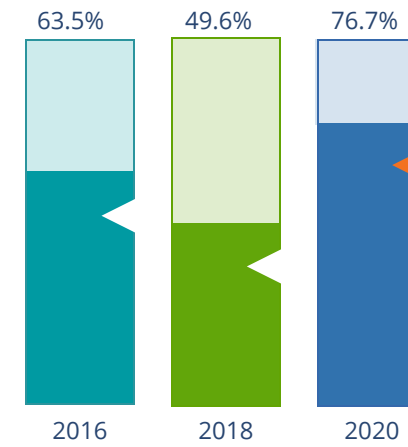
The **Registration Rate** is the percent of your voting-eligible students who registered to vote.

VOTING RATE OF REGISTERED STUDENTS



The **Voting Rate of Registered Students** is the percent of registered students who voted on Election Day. We often refer to this as the “yield” rate.

VOTING RATE



The **Voting Rate** is the percentage of eligible students who voted on Election Day. The voting rate is also the product of the registration and yield rates.

Looking Closer

Voting and Registration Rates

	2016	2018	2020	2016-2020 Change (p.p.)
Total Student Enrollment	40,477	41,234	43,358	↑ 2,882
(Age under 18/Unknown)	-	-	-	-
(IPEDS estimated non-resident aliens)	1,933	1,895	1,677	↓ -256
(FERPA records blocked)	73	60	975	↑ 902
(Non-Degree Seeking Students)	131	767	368	↑ 237
Total eligible voters	38,340	38,512	40,338	↑ 1,999
Number of students who registered	33,081	33,063	36,453	↑ 3,372
Number of students who voted	24,357	19,110	30,927	↑ 6,570
Registration Rate %	86	86	90	↑ 4
Voting Rate of Registered Students %	74	58	85	↑ 11
Voting Rate %	64	50	77	↑ 13

This page provides the numbers we used to calculate your voting, registration, and yield rates. The sub-categories under total student enrollment are the adjustments that we make to account for students who are ineligible to vote due to age or citizenship status. We also exclude, when correctly flagged, students who are not pursuing degrees.

We use IPEDS-derived estimates of NRAs when institutions do not submit non-resident alien status data to NSC, or we cannot verify the accuracy of the reported counts. This estimate is given by "IPEDS estimated non-resident aliens" on this page. If you believe the number of international students reported on this report is incorrect, you can manually adjust your institution's voting rates by using our recalculation tool. <https://id-he.tufts.edu/nslve/nslve-recalculation-tool>.

By Institution Types

2016 Voting Rate for All Institutions

53%

HIGH
82%

LOW
13%

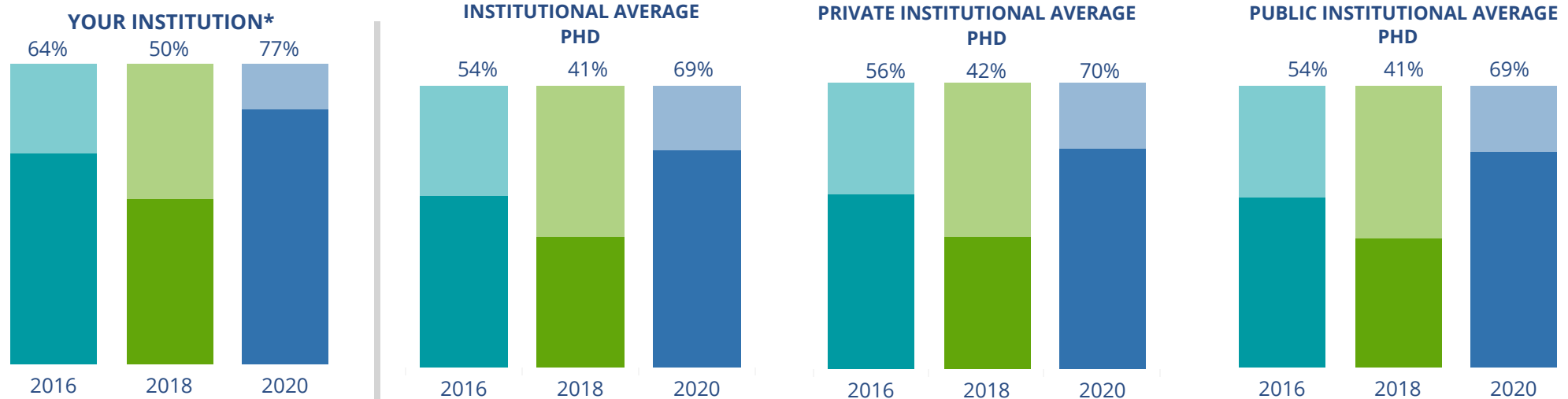
2020 Voting Rate for All Institutions

66%

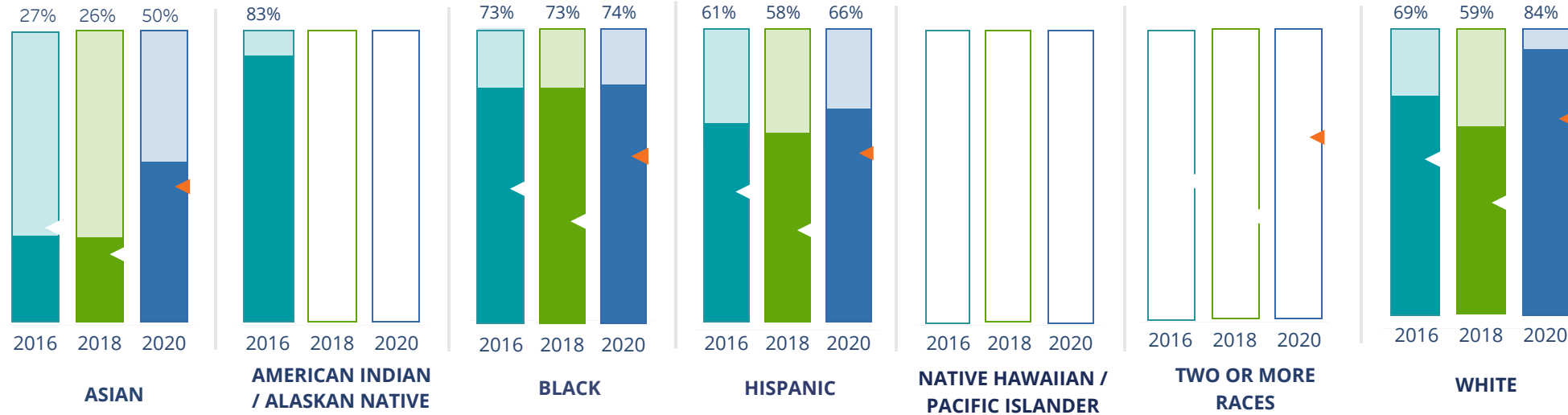
HIGH
89%

LOW
19%

These are estimated voting rates of your institution compared to the average voting rates of similar institutions in NSLVE. *"Your Institution" chart is presented at a different scale.



By Race / Ethnicity



These are estimated voting rates for race / ethnicity groups. These classifications are provided by campuses and are obtained following race reporting procedures* defined by the National Center for Education Statistics of the Institute of Education Sciences (IES). Please see our FAQ for more detail on why we cannot report national benchmark for some of the demographic groups:

<https://tufts.app.box.com/v/idhe-nslve-report-faq>

If you notice unavailable/missing data in this page, it could mean any of the following for your institution: (i) does not report this data; (ii) did not provide this data in past years; (iii) does not separately submit data for one or more of the demographic groups, or (iv) the data is reported for 10 or fewer students.

* <https://nces.ed.gov/ipeds/report-your-data/race-ethnicity-collecting-data-for-reporting-purposes>

Looking Closer

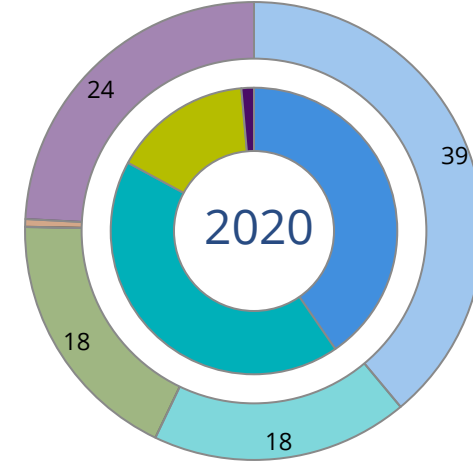
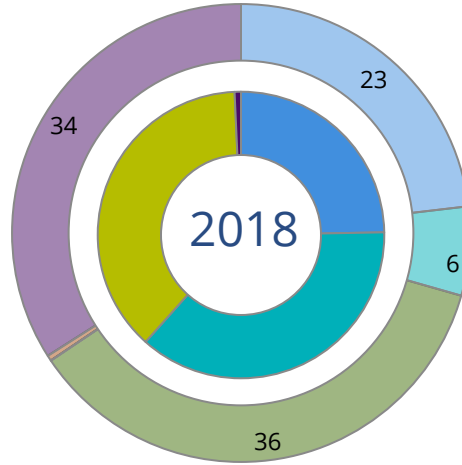
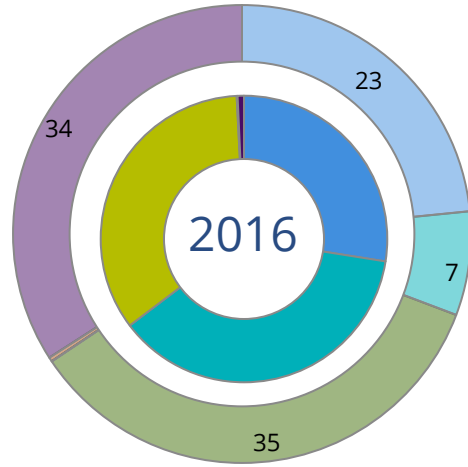
By Race/Ethnicity

This page provides the numbers we used to calculate race / ethnicity group voting rates. We include the counts of students and the change in rates between the two most recent comparable election years. If you notice unavailable/missing data in this page, it could mean any of the following for your institution: (i) does not report this data; (ii) did not provide this data in past years; (iii) does not separately submit data for one or more of the demographic groups, or (iv) the data is reported for 10 or fewer students.

	2016			2018			2020			2016-2020 Change (p.p)
	Enrolled	Voted	Rate	Enrolled	Voted	Rate	Enrolled	Voted	Rate	
Asian	363	98	27	144	38	26	58	29	50	↑ 23
American Indian/ Alaska Native	23	19	83	-	-	-	-	-	-	-
Black	679	493	73	309	224	72	83	61	73	↑ 1
Hispanic	365	224	61	158	92	58	41	27	66	↑ 4
Native Hawaiian/ Pacific Islander	-	-	-	-	-	-	-	-	-	-
2 or More Races	-	-	-	-	-	-	-	-	-	-
White	4,272	2,952	69	1,943	1,152	59	481	403	84	↑ 15
Race Unknown	34,554	20,569	60	37,807	17,599	47	41,326	30,403	74	↑ 14

By Voting Method

■ Not-In-Person
 ■ Early Vote
 ■ In-Person
 ■ Other
 ■ Provisional
 ■ Unknown



	2016		2018		2020		2016-2020	
	Voted	Rate	Voted	Rate	Voted	Rate	Change (p.p.)	
Early Vote	9,070	37	7,047	37	13,130	43	5	↑
In-Person on Election Day	8,398	35	7,196	38	4,854	16	-19	↓
Not-In-Person	6,693	28	4,725	25	12,482	40	13	↑
Other	-	-	-	-	-	-	-	-
Provisional	19	0	-	-	-	-	-	-
Voting Method Unknown	177	1	140	1	452	1	1	↑

These are estimated rates for vote method utilization, the number of students utilizing each method, and the percent of students utilizing each method. Not all U.S. states provide information on vote method; voting method for voter files from these states are classified "Voting Method Unknown." For a list of these states, see our FAQ. <https://idhe.tufts.edu/nsive/nsive-faq#CampusReports>

By Age Group

	2016	2018	2020
18-21	60%	44%	75%
22-24	62%	50%	73%
25-29	60%	53%	69%
30-39	61%	55%	68%
40-49	72%	65%	78%
50+	82%	77%	84%

Voting is habit-forming and young voters will usually continue as voters in subsequent elections.

Also, young voters are more likely to be contacted by campaigns and are visible, and therefore significant, to elected officials. While in the past, we have seen voting rates increase across age groups, in recent cycles, the most significant increases have been among first-time and the youngest voters. Some colleges serve primarily young students, traditionally viewed as students in the 18-21 or 22-24 categories here. Others have much higher numbers of enrolled older undergraduate or graduate students.

Looking Closer

By Age Group

Here, we provide the numbers of students in each age category and the voting rates for each group. These are based on the student's age on the day of the election, as calculated by the National Student Clearinghouse using data from student enrollment records.

	2016			2018			2020			2016-2020	
	Enrolled	Voted	Rate	Enrolled	Voted	Rate	Enrolled	Voted	Rate	Change (p.p)	
18-21	25,795	15,371	60	26,210	11,586	44	26,331	19,694	75	↑ 15	
22-24	7,630	4,715	62	7,120	3,593	50	7,503	5,493	73	↑ 11	
25-29	3,797	2,290	60	3,625	1,919	53	3,895	2,669	69	↑ 8	
30-39	2,151	1,319	61	2,360	1,294	55	2,820	1,917	68	↑ 7	
40-49	640	458	72	747	484	65	1,026	801	78	↑ 7	
50+	248	204	82	305	234	77	422	353	84	↑ 1	

Looking Closer

By Sex

	2016			2018			2020			2016-2020	
	Enrolled	Voted	Rate	Enrolled	Voted	Rate	Enrolled	Voted	Rate	Change (p.p)	
Female	22,191	14,302	64	22,821	11,576	51	24,095	18,550	77	↑	13
Male	18,065	10,050	56	17,546	7,534	43	17,902	12,377	69	↑	14

These are estimated voting rates for sex groups and the numbers we used to calculate their voting rates. These classifications are provided by campuses and are obtained following the reporting procedures defined by the National Center for Education Statistics (NCES) of the Institute of Education Sciences (IES). Presently, NCES requires institutions to report students as “Male” or “Female” only.*

If you notice missing data in this page, it could mean any of the following for your institution: (i) does not report this data; (ii) did not provide this data in past years; (iii) does not separately submit data for one or more of the demographic groups, or (iv) the data is reported for 10 or fewer students.

*<https://surveys.nces.ed.gov/ipeds/public/survey-materials/faq?faqid=11>

Looking Closer

By Education Level / Undergraduate Class Year

	2016			2018			2020			2016-2020	
	Enrolled	Voted	Rate (%)	Enrolled	Voted	Rate (%)	Enrolled	Voted	Rate (%)	Change (p.p)	
EDUCATION LEVEL											
Undergraduate	32,537	19,527	60	32,159	14,547	45	31,506	23,459	74	↑	14
Graduate	7,715	4,822	63	7,848	4,401	56	10,040	7,275	72	↑	10
Class Unknown	-	-	-	360	162	45	451	193	43	-	-
CLASS YEAR											
First Year	5,279	57	3,010	4,823	38	1,850	2,349	70	1,643	↑	13
Second Year	6,988	58	4,058	7,194	39	2,823	6,051	73	4,410	↑	15
Upper Level	20,150	62	12,406	20,072	49	9,831	23,092	75	17,394	↑	14
ENROLLMENT STATUS											
Full-time	35,458	21,544	61	32,052	14,799	46	31,042	23,283	75	↑	14
Part-time	4,803	2,813	59	8,311	4,307	52	10,953	7,642	70	↑	11

These are estimated voting rates by Education Level (undergraduate/graduate), Class Year, and Enrollment Status (full-time/part-time), and the numbers we used to calculate these rates.

If you notice missing data in this page, it could mean any of the following for your institution: (i) does not report this data; (ii) did not provide this data in past years; (iii) does not separately submit data for one or more of the demographic groups, or (iv) the data is reported for 10 or fewer students.

By Field of Study

FIELDS	2016			2018			2020			2016-2020	
	Enrolled	Voted	Rate	Enrolled	Voted	Rate	Enrolled	Voted	Rate	Change (p.p)	
Architecture	86	60	70	76	53	70	86	66	77	↑	7
Area, Ethnic, Cultural, and Gender Studies	64	41	64	63	41	65	39	26	67	↑	3
Biological and Biomedical Sciences	3,730	2,107	56	3,244	1,419	44	3,632	2,687	74	↑	17
Business, Management, and Marketing	6,973	3,913	56	7,226	2,760	38	7,878	5,660	72	↑	16
Communication and Journalism	1,282	853	67	1,151	628	55	1,205	990	82	↑	16
Computer and Information Sciences	1,779	1,060	60	1,839	904	49	1,917	1,331	69	↑	10
Education	1,543	1,012	66	1,373	749	55	1,562	1,209	77	↑	12

These are estimated voting rates by field of study, and the numbers we used to calculate the field of study rates. For an explanation of CIP codes, please see our FAQ.* There are roughly 8,000 fields of study among U.S. colleges and universities, so we provide rates for condensed categories.

*<https://tufts.app.box.com/v/idhe-nslve-report-faq>

By Field of Study

FIELDS	2016			2018			2020			2016-2020 Change (p.p)
	Enrolled	Voted	Rate	Enrolled	Voted	Rate	Enrolled	Voted	Rate	
Engineering and Engineering Technologies	2,057	1,051	51	1,997	708	35	2,102	1,364	65	↑ 14
English Language and Literature	1,515	1,050	69	1,249	730	58	1,066	853	80	↑ 11
Family and Consumer/Human Sciences	1,222	752	62	1,190	531	45	987	756	77	↑ 15
Foreign Languages, Literatures, and Lingui..	335	225	67	278	159	57	262	201	77	↑ 10
Health Professions	2,167	1,453	67	3,835	1,959	51	4,470	3,461	77	↑ 10
History	371	266	72	349	220	63	315	256	81	↑ 10
Law Enforcement, Firefighting, and Protec..	2,228	1,370	61	2,174	1,036	48	2,360	1,729	73	↑ 12
Legal Professions and Studies	577	434	75	702	504	72	954	809	85	↑ 10
Liberal Arts and Sciences, and Humanities	1,572	893	57	1,450	564	39	1,145	791	69	↑ 12
Mathematics and Statistics	625	248	40	557	189	34	554	264	48	↑ 8
Multi/Interdisciplinary Studies	75	34	45	80	34	43	70	41	59	↑ 13
Natural Resources and Conservation	456	318	70	466	275	59	411	329	80	↑ 10
Parks, Recreation, Leisure, and Fitness Stu..	550	285	52	595	207	35	688	477	69	↑ 18
Philosophy and Religious Studies	274	185	68	238	151	63	226	167	74	↑ 6

By Field of Study

FIELDS	2016			2018			2020			2016-2020 Change (p.p)
	Enrolled	Voted	Rate	Enrolled	Voted	Rate	Enrolled	Voted	Rate	
Physical Sciences	1,099	597	54	851	385	45	833	566	68	↑ 14
Psychology	2,135	1,276	60	2,334	1,124	48	2,418	1,804	75	↑ 15
Public Administration and Social Service Professions	919	670	73	375	208	55	514	395	77	↑ 4
Social Sciences	4,582	2,875	63	4,345	2,333	54	3,930	2,961	75	↑ 13
Visual and Performing Arts	1,992	1,309	66	1,950	1,068	55	1,891	1,520	80	↑ 15
Unknown	49	17	35	380	171	45	482	214	44	↑ 10

About This Report

Thank you for participating in the National Study of Learning, Voting, and Engagement.

Since NSLVE's launch in 2013, nearly 1,200 colleges and universities have signed up to receive their voting rates for the 2012, 2014, 2016, 2018, and 2020 federal elections.

Along with others, your institution's participation in this study has allowed us to build a robust database of over 50 million college student records, about 10 million for each election year, that serve as a foundation for innovative research on college student political learning and engagement in democracy.

NSLVE is a signature initiative of the Institute for Democracy and Higher Education (IDHE) at Tufts University's Jonathan M. Tisch College of Civic Life. The mission of IDHE is to shift college and university priorities and culture to advance political learning, agency, and equity. We achieve our mission through research, resource development, technical assistance, and advocacy.

About the Data

The voter registration and voting rates in this report reflect the percentage of your institution's students who were eligible to vote and who actually voted in the 2016, 2018, and 2020 elections.

These results are based on enrollment records your institution submitted to the National Student Clearinghouse (NSC) and publicly available voting files collected by L2 Political.

Enrollment lists are adjusted by deducting students under age 18 (at the time of the election), people identified as non-degree seeking and those identified by campuses as "nonresident aliens" (NRAs) (the federal government's category for mostly international students). Unfortunately, not all campuses report NRAs to NSC. For those campuses, we use IPEDS to calculate the number of NRA students on each campus and adjust NSC enrollment numbers to estimate the number of students to remove. We also quality check NRA removals by verifying that there is little to no discrepancy between the number of international students reported by the campus to IPEDS and to NSC. We cannot adjust subgroup analyses absent identification of NRAs verified by the process above. We welcome closer partnerships with individual colleges and universities to provide more accurate rates. For more on the data and the matching process, see our FAQ on Campus Reports.

Florida State University

Thank you for the work you do to improve your students' political learning and engagement. We hope that you find your NSLVE report useful. For up-to-date news on NSLVE data, resources, and to sign up for our newsletter visit: <https://idhe.tufts.edu>.

References: IDHE encourages report recipients to share this report as broadly as possible, including posting it on the college or university's website. When doing so, please use the following citation: Institute for Democracy & Higher Education: National Study of Learning, Voting and Engagement. (2021). 2016, 2018, and 2020 report for _____ [name of institution]. Medford, MA.



Barnum Hall
163 Packard Ave.
Medford, MA 02155

tischcollege@tufts.edu
617.627.3453



Institute for Democracy & Higher Education:
National Study of Learning, Voting, and Engagement
Barnum Hall, Medford, MA 02155

Follow Us on Twitter: @TuftsIDHE
NSLVE@tufts.edu
617.627.0620