



October 2021

Student Voting Rates for Florida Gulf Coast University

2020 NSLVE Campus Report



Jonathan M. Tisch
College of Civic Life



INSTITUTE FOR DEMOCRACY
& HIGHER EDUCATION

October 2021

Dear Colleagues:

We are pleased to send this tailored report containing your students' voting rates for 2020. This report contains three years of relevant topline data: 2016, 2018, and 2020. As always, we disaggregate the data so you can better identify and address gaps in participation.

College and university students participated in record-breaking numbers in the 2020 election. In 2016, the Average Institutional Voting Rate was 53%. This year, it jumped to 66%. We encourage you to review Democracy Counts 2020, our most recent national report.

As in past years, we urge you to share this report widely and strategically, particularly with faculty who, in 2020, were often the most consistent communicators with students about ever-changing voting conditions and deadlines. We also urge you to review our recommendations for engaging elections to cultivate a robust and healthy campus climate for political engagement, discourse, equity, and participation: Election Imperatives (2019) and the more recent Election Imperatives: A Time of Physical Distancing and Social Action. Since "pervasive political discussions" and attentiveness to the campus culture around speech and academic freedom are among our top recommendations, we direct you to our discussion guides on talking about your NSLVE report, on free speech and inclusion, and on hot topics, our Making Sense of ... guides.

Finally, we always encourage you to work with us. Help us help you get better data by reaching out. Email IDHE@Tufts.edu for more information. And as always, watch your inbox for our periodic newsletter, IDHE Update, for announcements about upcoming releases and new resources.

Congratulations on engaging your students in the 2020 election. Remember, student political learning is a year-round objective. Elections may be episodic, but student political engagement should not be.

All the Best,
IDHE Team



(Top Row from left) Duy Trinh, Program Administrator; Adam Gismondi, Director of Impact; Dave Brinker, Senior Researcher;
(Bottom Row from left) Nancy Thomas, Director; Norma López, Postdoctoral Scholar; Prabhat Gautam, Data Manager.

We also want to acknowledge and thank **Syed Golam Mohaimen, M.S. student in Data Science at Tufts University** for his contributions toward the creation of these reports.

In This Report

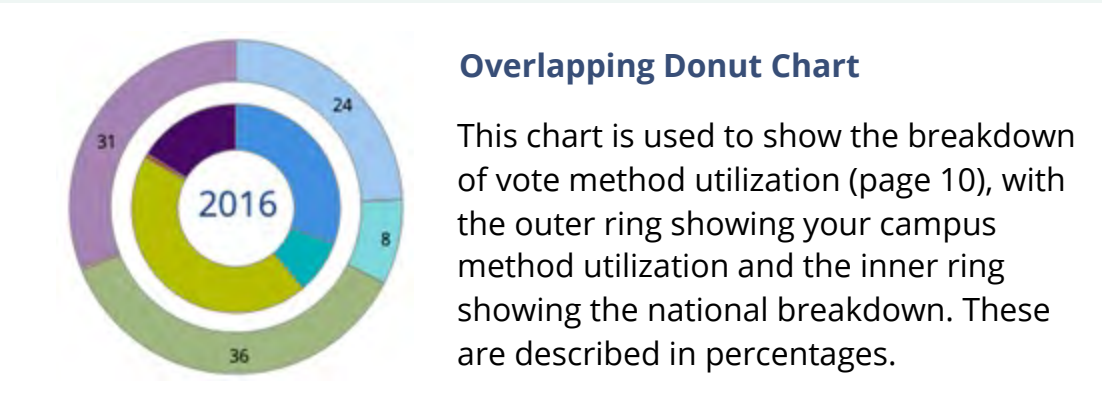
This report presents data on student voter participation rates for your campus. The topline counts on page 5 tells you how many students voted, but we encourage you to look carefully at the data on subsequent pages to learn who voted. Data are presented in the form of vessel charts, overlapping donut charts, and tables.



	2014			2018			2014-2018
	Enrolled	Voted	Rate (%)	Enrolled	Voted	Rate (%)	Change (p.p.)
Asian	-	-	-	-	-	-	-
American Indian/ Alaska Native	-	-	-	-	-	-	-
Black	-	-	-	-	-	-	-
Hispanic	-	-	-	-	-	-	-

Tables

The tables show, on the left-side columns, the numbers of students and the rates from 2016, 2018, and 2020. On the left-side, percentage point (p.p.) changes between 2016 and 2020. A red down arrow indicates a decrease, a green up arrow indicates an increase, and a yellow arrow pointing to the right indicates no change. "-" in these tables indicates that the data is unavailable/missing, or is available for 10 or less students.



Voting, Registration and Yield Rates

YOUR INSTITUTION

70.0%

2020 Voting Rate

+16.1

Change From 2016

ALL INSTITUTIONS

66%

2020 Voting Rate

REGISTRATION RATE

Year	Registration Rate
2016	82.1%
2018	83.0%
2020	88.9%

The **Registration Rate** is the percent of your voting-eligible students who registered to vote.

VOTING RATE OF REGISTERED STUDENTS

Year	Voting Rate of Registered Students
2016	65.7%
2018	49.9%
2020	78.8%

The **Voting Rate of Registered Students** is the percent of registered students who voted on Election Day. We often refer to this as the “yield” rate.

VOTING RATE

Year	Voting Rate
2016	53.9%
2018	41.4%
2020	70.0%

The **Voting Rate** is the percentage of eligible students who voted on Election Day. The voting rate is also the product of the registration and yield rates.

Looking Closer

Voting and Registration Rates

	2016	2018	2020	2016-2020 Change (p.p.)
Total Student Enrollment	14,273	14,466	14,576	↑ 304
(Age under 18/Unknown)	–	–	–	–
(IPEDS estimated non-resident aliens)	247	294	281	↑ 34
(FERPA records blocked)	18	14	–	–
(Non-Degree Seeking Students)	–	–	–	–
Total eligible voters	14,008	14,159	14,287	↑ 279
Number of students who registered	11,503	11,745	12,705	↑ 1,202
Number of students who voted	7,556	5,862	10,008	↑ 2,452
Registration Rate %	82	83	89	↑ 7
Voting Rate of Registered Students %	66	50	79	↑ 13
Voting Rate %	54	41	70	↑ 16

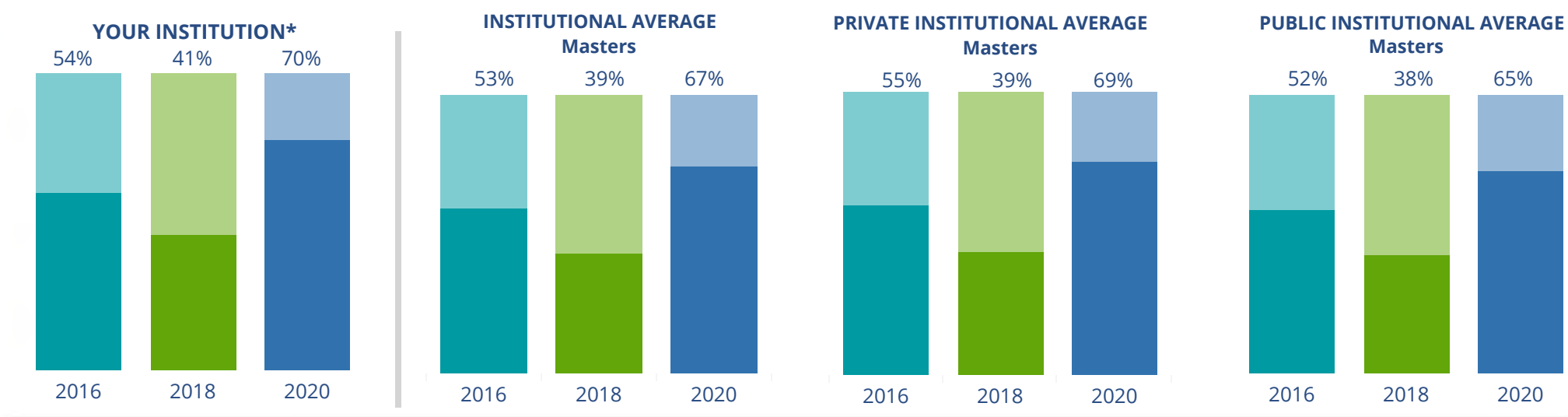
This page provides the numbers we used to calculate your voting, registration, and yield rates. The sub-categories under total student enrollment are the adjustments that we make to account for students who are ineligible to vote due to age or citizenship status. We also exclude, when correctly flagged, students who are not pursuing degrees.

We use IPEDS-derived estimates of NRAs when institutions do not submit non-resident alien status data to NSC, or we cannot verify the accuracy of the reported counts. This estimate is given by "IPEDS estimated non-resident aliens" on this page. If you believe the number of international students reported on this report is incorrect, you can manually adjust your institution's voting rates by using our recalculation tool. <https://id-he.tufts.edu/nsive/nsive-recalculation-tool>.

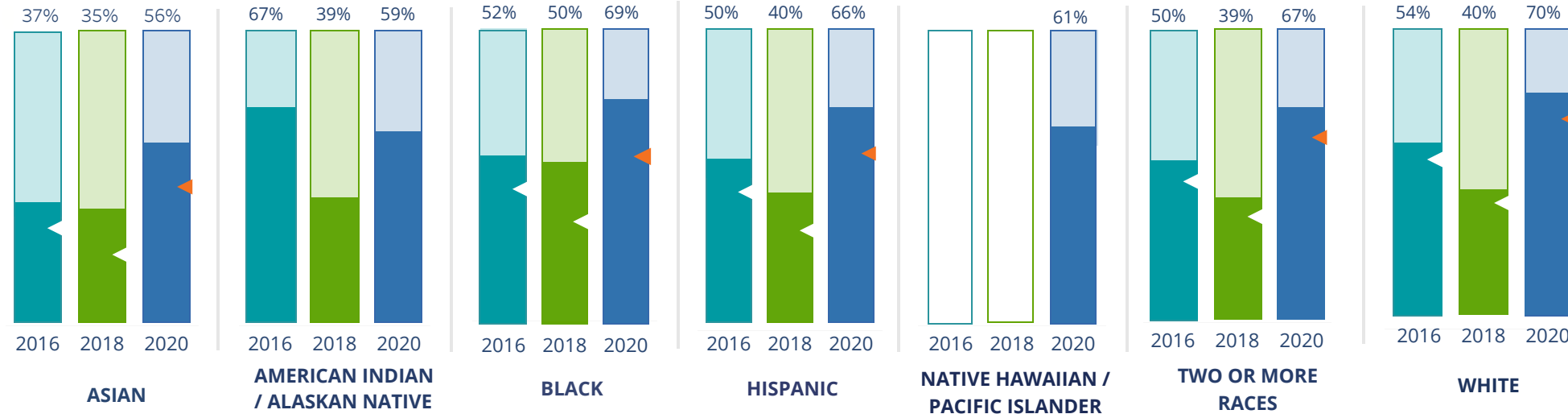
By Institution Types



These are estimated voting rates of your institution compared to the average voting rates of similar institutions in NSLVE. *"Your Institution" chart is presented at a different scale.



By Race / Ethnicity



These are estimated voting rates for race / ethnicity groups. These classifications are provided by campuses and are obtained following race reporting procedures* defined by the National Center for Education Statistics of the Institute of Education Sciences (IES). Please see our FAQ for more detail on why we cannot report national benchmark for some of the demographic groups:

<https://tufts.app.box.com/v/idhe-nslve-report-faq>

If you notice unavailable/missing data in this page, it could mean any of the following for your institution: (i) does not report this data; (ii) did not provide this data in past years; (iii) does not separately submit data for one or more of the demographic groups, or (iv) the data is reported for 10 or fewer students.

* <https://nces.ed.gov/ipeds/report-your-data/race-ethnicity-collecting-data-for-reporting-purposes>

Looking Closer

By Race/Ethnicity

This page provides the numbers we used to calculate race / ethnicity group voting rates. We

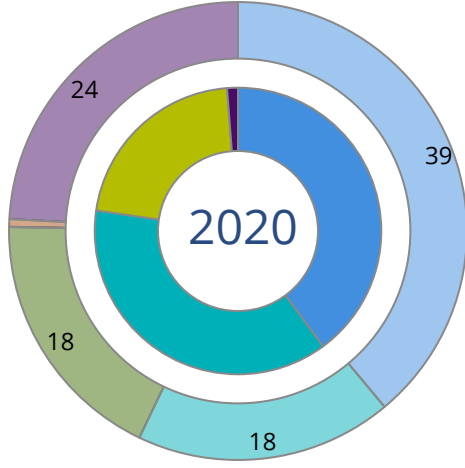
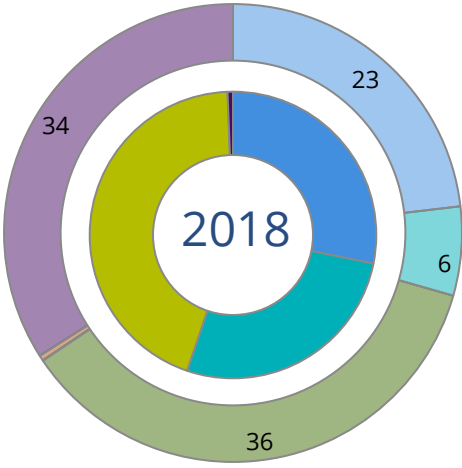
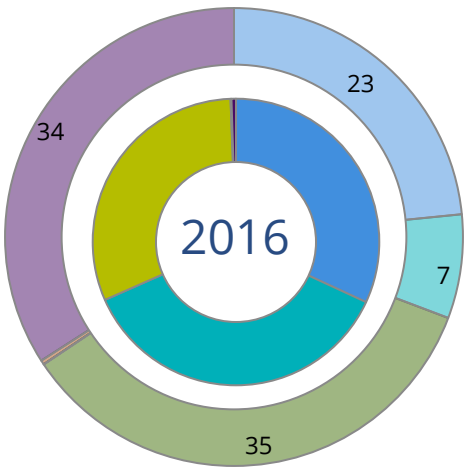
include the counts of students and the change in rates between the two most recent comparable election years.

If you notice unavailable/missing data in this page, it could mean any of the following for your institution: (i) does not report this data; (ii) did not provide this data in past years; (iii) does not separately submit data for one or more of the demographic groups, or (iv) the data is reported for 10 or fewer students.

	2016			2018			2020			2016-2020 Change (p.p)
	Enrolled	Voted	Rate	Enrolled	Voted	Rate	Enrolled	Voted	Rate	
Asian	248	92	37	264	93	35	278	155	56	↑ 19
American Indian/ Alaska Native	33	22	67	36	14	39	32	19	59	↓ -7
Black	1,026	530	52	1,032	514	50	1,020	703	69	↑ 17
Hispanic	2,776	1,396	50	3,105	1,241	40	3,457	2,294	66	↑ 16
Native Hawaiian/ Pacific Islander	18	–	–	19	–	–	18	11	61	–
2 or More Races	389	194	50	466	180	39	528	352	67	↑ 17
White	9,467	5,135	54	9,242	3,669	40	8,989	6,301	70	↑ 16
Race Unknown	295	181	61	285	147	52	241	173	72	↑ 10

By Voting Method

Not-In-Person Early Vote In-Person Other Provisional Unknown



	2016		2018		2020		2016-2020	
	Voted	Rate	Voted	Rate	Voted	Rate	Change (p.p.)	
Early Vote	2,761	37	1,585	27	3,747	37	1	↑
In-Person on Election Day	2,346	31	2,593	44	2,153	22	-10	↓
Not-In-Person	2,407	32	1,656	28	3,995	40	8	↑
Other	-	-	-	-	-	-	-	
Provisional	-	-	-	-	-	-	-	
Voting Method Unknown	38	1	28	1	111	1	1	↑

These are estimated rates for vote method utilization, the number of students utilizing each method, and the percent of students utilizing each method. Not all U.S. states provide information on vote method; voting method for voter files from these states are classified "Voting Method Unknown." For a list of these states, see our FAQ. <https://idhe.tufts.edu/nsive/nsive-faq#CampusReports>

By Age Group

	2016	2018	2020
18-21	49%	37%	67%
22-24	54%	41%	70%
25-29	62%	48%	68%
30-39	69%	57%	76%
40-49	76%	64%	79%
50+	82%	84%	87%

Voting is habit-forming and young voters will usually continue as voters in subsequent elections. Also, young voters are more likely to be contacted by campaigns and are visible, and therefore significant, to elected officials. While in the past, we have seen voting rates increase across age groups, in recent cycles, the most significant increases have been among first-time and the youngest voters. Some colleges serve primarily young students, traditionally viewed as students in the 18-21 or 22-24 categories here. Others have much higher numbers of enrolled older undergraduate or graduate students.

Looking Closer

By Age Group

Here, we provide the numbers of students in each age category and the voting rates for each group. These are based on the student’s age on the day of the election, as calculated by the National Student Clearinghouse using data from student enrollment records.

	2016			2018			2020			2016-2020	
	Enrolled	Voted	Rate	Enrolled	Voted	Rate	Enrolled	Voted	Rate	Change (p.p)	
18-21	8,879	4,371	49	9,102	3,358	37	9,256	6,230	67	↑	18
22-24	3,130	1,684	54	3,157	1,309	41	2,981	2,085	70	↑	16
25-29	1,201	745	62	1,200	573	48	1,266	867	68	↑	6
30-39	646	446	69	616	354	57	678	512	76	↑	6
40-49	237	179	76	231	148	64	238	189	79	↑	4
50+	159	131	82	143	120	84	144	125	87	↑	4

Looking Closer

By Sex

	2016			2018			2020			2016-2020	
	Enrolled	Voted	Rate	Enrolled	Voted	Rate	Enrolled	Voted	Rate	Change (p.p)	
Female	8,088	4,463	55	8,190	3,514	43	8,418	5,954	71	↑	16
Male	6,164	3,093	50	6,258	2,347	38	6,145	4,054	66	↑	16

These are estimated voting rates for sex groups and the numbers we used to calculate their voting rates. These classifications are provided by campuses and are obtained following the reporting procedures defined by the National Center for Education Statistics (NCES) of the Institute of Education Sciences (IES). Presently, NCES requires institutions to report students as “Male” or “Female” only.*

If you notice missing data in this page, it could mean any of the following for your institution: (i) does not report this data; (ii) did not provide this data in past years; (iii) does not separately submit data for one or more of the demographic groups, or (iv) the data is reported for 10 or fewer students.

*<https://surveys.nces.ed.gov/ipeds/public/survey-materials/faq?faqid=11>

Looking Closer

By Education Level / Undergraduate Class Year

	2016			2018			2020			2016-2020	
	Enrolled	Voted	Rate (%)	Enrolled	Voted	Rate (%)	Enrolled	Voted	Rate (%)	Change (p.p)	
EDUCATION LEVEL											
Undergraduate	13,166	6,772	51	13,279	5,176	39	13,082	8,839	68	↑	16
Graduate	1,085	783	72	1,170	686	59	1,480	1,168	79	↑	7
Class Unknown	-	-	-	-	-	-	-	-	-	-	-
CLASS YEAR											
First Year	3,378	44	1,503	3,252	33	1,076	2,799	62	1,725	↑	17
Second Year	2,953	49	1,457	2,639	36	950	2,806	67	1,874	↑	17
Upper Level	6,837	56	3,814	7,399	43	3,158	7,479	70	5,242	↑	14
ENROLLMENT STATUS											
Full-time	10,789	5,521	51	11,118	4,279	38	11,150	7,664	69	↑	18
Part-time	3,463	2,035	59	3,331	1,583	48	3,413	2,344	69	↑	10

These are estimated voting rates by Education Level (undergraduate/graduate), Class Year, and Enrollment Status (full-time/part-time), and the numbers we used to calculate these rates.

If you notice missing data in this page, it could mean any of the following for your institution: (i) does not report this data; (ii) did not provide this data in past years; (iii) does not separately submit data for one or more of the demographic groups, or (iv) the data is reported for 10 or fewer students.

By Field of Study

FIELDS	2016			2018			2020			2016-2020 RateChange (p.p)
	Enrolled	Voted	Rate	Enrolled	Voted	Rate	Enrolled	Voted	Rate	
Biological and Biomedical Sciences	936	476	51	987	386	39	976	667	68	↑ 17
Business, Management, and Marketing	3,848	1,948	51	3,503	1,245	36	3,231	2,182	68	↑ 17
Communication and Journalism	916	491	54	772	323	42	620	445	72	↑ 18
Computer and Information Sciences	–	–	–	–	–	–	25	15	60	–
Education	1,130	669	59	1,020	478	47	1,093	824	75	↑ 16
Engineering and Engineering Technologies	844	427	51	954	363	38	964	627	65	↑ 14
English Language and Literature	223	143	64	190	102	54	162	122	75	↑ 11


These are estimated voting rates by field of study, and the numbers we used to calculate the field of study rates. For an explanation of CIP codes, please see our FAQ.* There are roughly 8,000 fields of study among U.S. colleges and universities, so we provide rates for condensed categories.

*<https://tufts.app.box.com/v/idhe-nslve-report-faq>

By Field of Study

FIELDS	2016			2018			2020			2016-2020 Change (p.p)
	Enrolled	Voted	Rate	Enrolled	Voted	Rate	Enrolled	Voted	Rate	
Health Professions	1,908	1,021	54	1,932	781	40	1,907	1,322	69	↑ 16
History	106	63	59	114	65	57	101	86	85	↑ 26
Law Enforcement, Firefighting, and Protec..	840	423	50	833	312	37	880	581	66	↑ 16
Legal Professions and Studies	279	157	56	233	115	49	200	138	69	↑ 13
Liberal Arts and Sciences, and Humanities	468	257	55	608	269	44	560	377	67	↑ 12
Mathematics and Statistics	82	49	60	92	38	41	64	40	63	↑ 3
Multi/Interdisciplinary Studies	61	25	41	643	224	35	925	620	67	↑ 26
Natural Resources and Conservation	536	271	51	501	236	47	481	344	72	↑ 21
Parks, Recreation, Leisure, and Fitness Stu..	384	155	40	344	109	32	330	200	61	↑ 20
Philosophy and Religious Studies	50	29	58	37	22	59	40	34	85	↑ 27
Physical Sciences	52	26	50	55	21	38	58	29	50	→ 0
Psychology	680	366	54	760	317	42	951	641	67	↑ 14
Public Administration and Social Service P..	273	174	64	266	137	52	272	198	73	↑ 9
Social Sciences	402	241	60	367	199	54	364	264	73	↑ 13

By Field of Study

FIELDS	2016			2018			2020			2016-2020	
	Enrolled	Voted	Rate	Enrolled	Voted	Rate	Enrolled	Voted	Rate	Change (p.p)	
Visual and Performing Arts	232	143	62	238	120	50	355	249	70		9
Unknown	-	-	-	-	-	-	-	-	-		-

About This Report

Thank you for participating in the National Study of Learning, Voting, and Engagement.

Since NSLVE's launch in 2013, nearly 1,200 colleges and universities have signed up to receive their voting rates for the 2012, 2014, 2016, 2018, and 2020 federal elections.

Along with others, your institution's participation in this study has allowed us to build a robust database of over 50 million college student records, about 10 million for each election year, that serve as a foundation for innovative research on college student political learning and engagement in democracy.

NSLVE is a signature initiative of the Institute for Democracy and Higher Education (IDHE) at Tufts University's Jonathan M. Tisch College of Civic Life. The mission of IDHE is to shift college and university priorities and culture to advance political learning, agency, and equity. We achieve our mission through research, resource development, technical assistance, and advocacy.

About the Data

The voter registration and voting rates in this report reflect the percentage of your institution's students who were eligible to vote and who actually voted in the 2016, 2018, and 2020 elections.

These results are based on enrollment records your institution submitted to the National Student Clearinghouse (NSC) and publicly available voting files collected by L2 Political.

Enrollment lists are adjusted by deducting students under age 18 (at the time of the election), people identified as non-degree seeking and those identified by campuses as "nonresident aliens" (NRAs) (the federal government's category for mostly international students). Unfortunately, not all campuses report NRAs to NSC. For those campuses, we use IPEDS to calculate the number of NRA students on each campus and adjust NSC enrollment numbers to estimate the number of students to remove. We also quality check NRA removals by verifying that there is little to no discrepancy between the number of international students reported by the campus to IPEDS and to NSC. We cannot adjust subgroup analyses absent identification of NRAs verified by the process above. We welcome closer partnerships with individual colleges and universities to provide more accurate rates. For more on the data and the matching process, see our FAQ on Campus Reports.

Florida Gulf Coast University

Thank you for the work you do to improve your students' political learning and engagement. We hope that you find your NSLVE report useful. For up-to-date news on NSLVE data, resources, and to sign up for our newsletter visit: <https://idhe.tufts.edu>.

References: IDHE encourages report recipients to share this report as broadly as possible, including posting it on the college or university's website. When doing so, please use the following citation: Institute for Democracy & Higher Education: National Study of Learning, Voting and Engagement. (2021). 2016, 2018, and 2020 report for _____ [name of institution]. Medford, MA.



Barnum Hall
163 Packard Ave.
Medford, MA 02155

tischcollege@tufts.edu
617.627.3453



Institute for Democracy & Higher Education:
National Study of Learning, Voting, and Engagement
Barnum Hall, Medford, MA 02155

Follow Us on Twitter: @TuftsIDHE
NSLVE@tufts.edu
617.627.0620