



October 2021

Student Voting Rates for Florida Atlantic University

2020 NSLVE Campus Report

October 2021

Dear Colleagues:

We are pleased to send this tailored report containing your students' voting rates for 2020. This report contains three years of relevant topline data: 2016, 2018, and 2020. As always, we disaggregate the data so you can better identify and address gaps in participation.

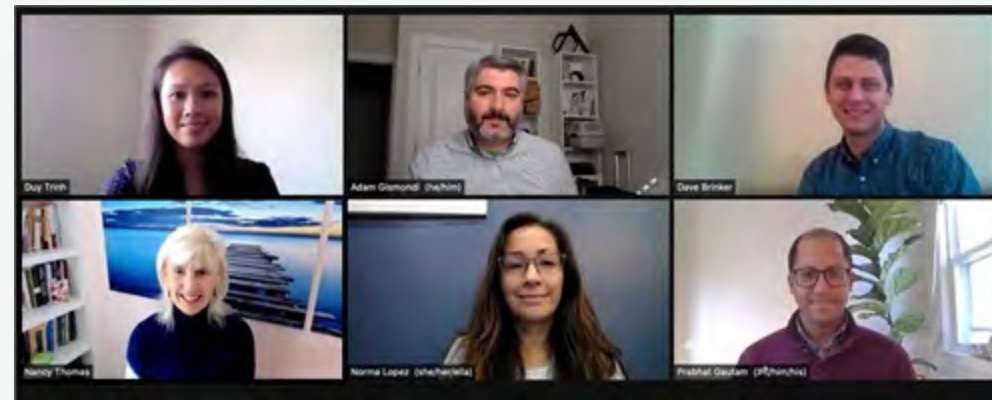
College and university students participated in record-breaking numbers in the 2020 election. In 2016, the Average Institutional Voting Rate was 53%. This year, it jumped to 66%. We encourage you to review Democracy Counts 2020, our most recent national report.

As in past years, we urge you to share this report widely and strategically, particularly with faculty who, in 2020, were often the most consistent communicators with students about ever-changing voting conditions and deadlines. We also urge you to review our recommendations for engaging elections to cultivate a robust and healthy campus climate for political engagement, discourse, equity, and participation: Election Imperatives (2019) and the more recent Election Imperatives: A Time of Physical Distancing and Social Action. Since "pervasive political discussions" and attentiveness to the campus culture around speech and academic freedom are among our top recommendations, we direct you to our discussion guides on talking about your NSLVE report, on free speech and inclusion, and on hot topics, our Making Sense of ... guides.

Finally, we always encourage you to work with us. Help us help you get better data by reaching out. Email IDHE@Tufts.edu for more information. And as always, watch your inbox for our periodic newsletter, IDHE Update, for announcements about upcoming releases and new resources.

Congratulations on engaging your students in the 2020 election. Remember, student political learning is a year-round objective. Elections may be episodic, but student political engagement should not be.

All the Best,
IDHE Team

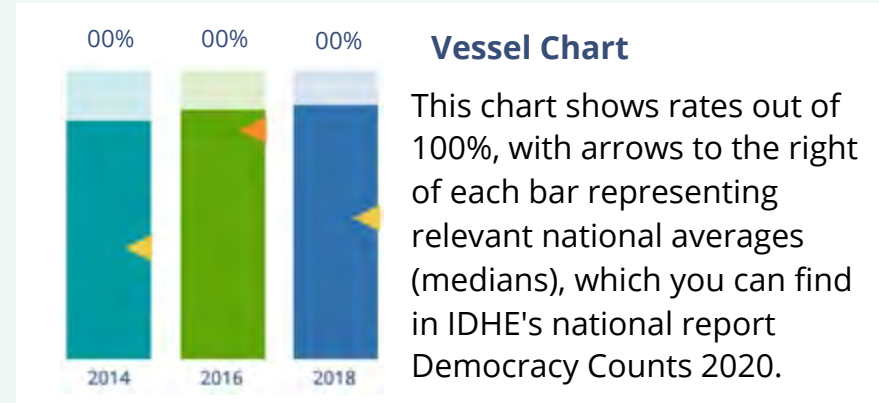


(Top Row from left) Duy Trinh, Program Administrator; Adam Gismondi, Director of Impact; Dave Brinker, Senior Researcher;
(Bottom Row from left) Nancy Thomas, Director; Norma López, Postdoctoral Scholar; Prabhat Gautam, Data Manager.

We also want to acknowledge and thank **Syed Golam Mohaimen, M.S. student in Data Science at Tufts University** for his contributions toward the creation of these reports.

In This Report

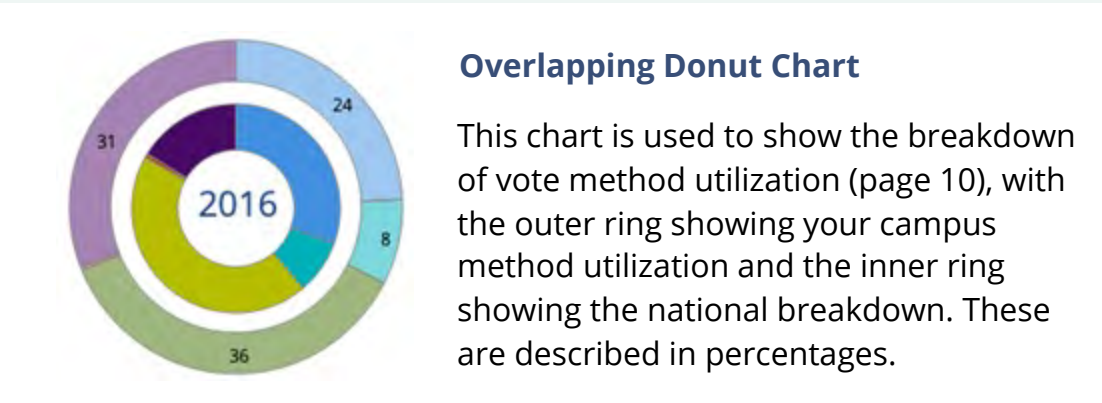
This report presents data on student voter participation rates for your campus. The topline counts on page 5 tells you how many students voted, but we encourage you to look carefully at the data on subsequent pages to learn who voted. Data are presented in the form of vessel charts, overlapping donut charts, and tables.



	2014			2018			2014-2018 Change (p.p.)
	Enrolled	Voted	Rate (%)	Enrolled	Voted	Rate (%)	
Asian	-	-	-	-	-	-	-
American Indian/ Alaska Native	-	-	-	-	-	-	-
Black	-	-	-	-	-	-	-
Hispanic	-	-	-	-	-	-	-

Tables

The tables show, on the left-side columns, the numbers of students and the rates from 2016, 2018, and 2020. On the left-side, percentage point (p.p.) changes between 2016 and 2020. A red down arrow indicates a decrease, a green up arrow indicates an increase, and a yellow arrow pointing to the right indicates no change. "-" in these tables indicates that the data is unavailable/missing, or is available for 10 or less students.



Voting, Registration and Yield Rates

YOUR INSTITUTION

71.1%

2020 Voting Rate

+11.1

Change From 2016

ALL INSTITUTIONS

66%

2020 Voting Rate

REGISTRATION RATE

Year	Registration Rate
2016	80.6%
2018	80.6%
2020	85.3%

The **Registration Rate** is the percent of your voting-eligible students who registered to vote.

VOTING RATE OF REGISTERED STUDENTS

Year	Voting Rate of Registered Students
2016	74.4%
2018	60.4%
2020	83.4%

The **Voting Rate of Registered Students** is the percent of registered students who voted on Election Day. We often refer to this as the “yield” rate.

VOTING RATE

Year	Voting Rate
2016	60.0%
2018	48.7%
2020	71.1%

The **Voting Rate** is the percentage of eligible students who voted on Election Day. The voting rate is also the product of the registration and yield rates.

Looking Closer

Voting and Registration Rates

	2016	2018	2020	2016-2020 Change (p.p.)
Total Student Enrollment	29,440	28,574	29,507	↑ 67
(Age under 18/Unknown)	83	121	136	↑ 53
(IPEDS estimated non-resident aliens)	1,072	1,168	1,136	↑ 65
(FERPA records blocked)	139	90	74	↓ -65
(Non-Degree Seeking Students)	596	–	408	↓ -188
Total eligible voters	27,551	27,196	27,753	↑ 203
Number of students who registered	22,194	21,924	23,667	↑ 1,473
Number of students who voted	16,519	13,239	19,728	↑ 3,209
Registration Rate %	81	81	85	↑ 5
Voting Rate of Registered Students %	74	60	83	↑ 9
Voting Rate %	60	49	71	↑ 11

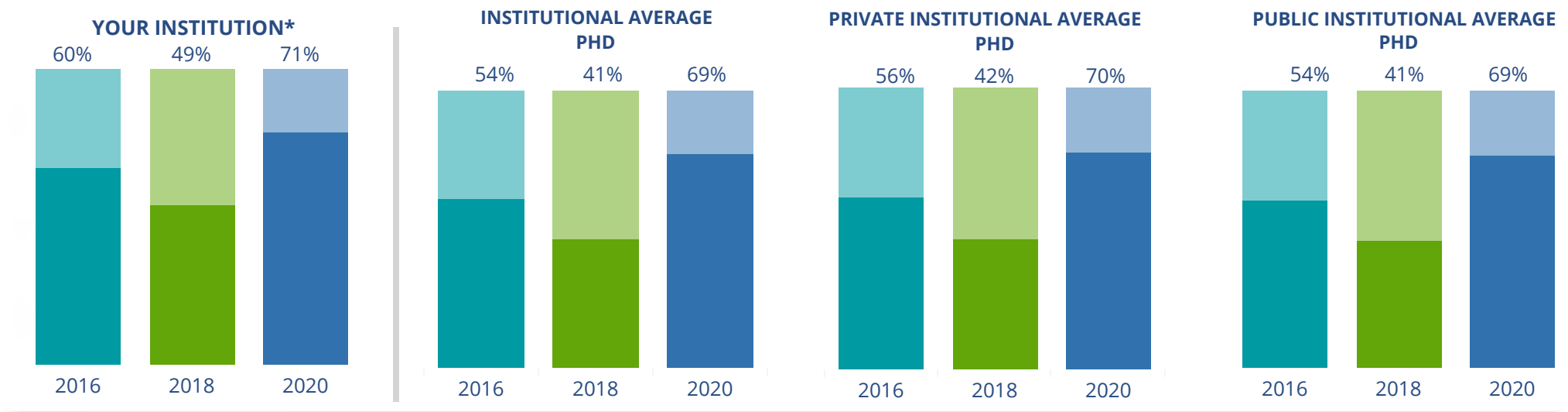
This page provides the numbers we used to calculate your voting, registration, and yield rates. The sub-categories under total student enrollment are the adjustments that we make to account for students who are ineligible to vote due to age or citizenship status. We also exclude, when correctly flagged, students who are not pursuing degrees.

We use IPEDS-derived estimates of NRAs when institutions do not submit non-resident alien status data to NSC, or we cannot verify the accuracy of the reported counts. This estimate is given by "IPEDS estimated non-resident aliens" on this page. If you believe the number of international students reported on this report is incorrect, you can manually adjust your institution's voting rates by using our recalculation tool. <https://id-he.tufts.edu/nsive/nsive-recalculation-tool>.

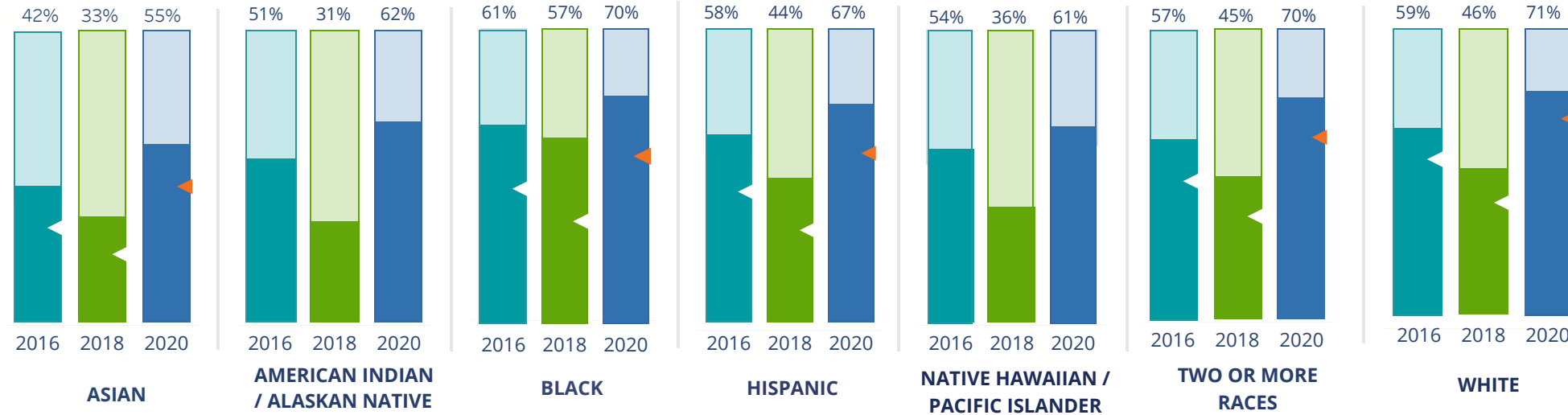
By Institution Types



These are estimated voting rates of your institution compared to the average voting rates of similar institutions in NSLVE. *"Your Institution" chart is presented at a different scale.



By Race / Ethnicity



These are estimated voting rates for race / ethnicity groups. These classifications are provided by campuses and are obtained following race reporting procedures* defined by the National Center for Education Statistics of the Institute of Education Sciences (IES). Please see our FAQ for more detail on why we cannot report national benchmark for some of the demographic groups:

<https://tufts.app.box.com/v/idhe-nsve-report-faq>

If you notice unavailable/missing data in this page, it could mean any of the following for your institution: (i) does not report this data; (ii) did not provide this data in past years; (iii) does not separately submit data for one or more of the demographic groups, or (iv) the data is reported for 10 or fewer students.

* <https://nces.ed.gov/ipeds/report-your-data/race-ethnicity-collecting-data-for-reporting-purposes>

Looking Closer

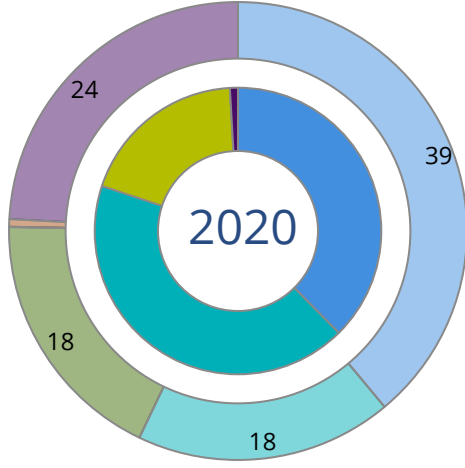
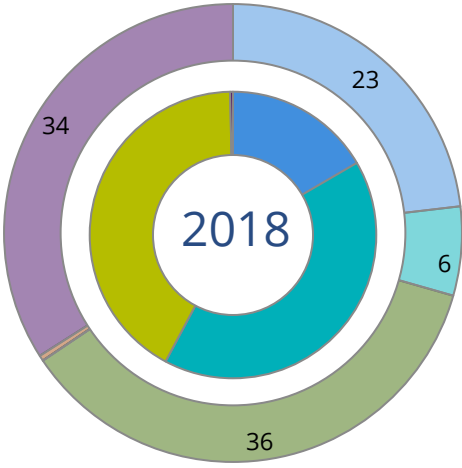
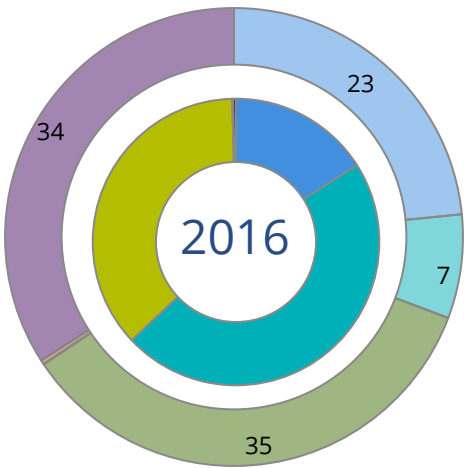
By Race/Ethnicity

This page provides the numbers we used to calculate race / ethnicity group voting rates. We include the counts of students and the change in rates between the two most recent comparable election years. If you notice unavailable/missing data in this page, it could mean any of the following for your institution: (i) does not report this data; (ii) did not provide this data in past years; (iii) does not separately submit data for one or more of the demographic groups, or (iv) the data is reported for 10 or fewer students.

	2016			2018			2020			2016-2020 Change (p.p)
	Enrolled	Voted	Rate	Enrolled	Voted	Rate	Enrolled	Voted	Rate	
Asian	1,427	602	42	1,452	478	33	1,402	771	55	↑ 13
American Indian/ Alaska Native	59	30	51	45	14	31	37	23	62	↑ 11
Black	5,650	3,444	61	5,537	3,168	57	5,856	4,091	70	↑ 9
Hispanic	7,441	4,300	58	7,676	3,406	44	8,281	5,559	67	↑ 9
Native Hawaiian/ Pacific Islander	35	19	54	33	12	36	36	22	61	↑ 7
2 or More Races	1,043	589	56	1,042	466	45	1,099	765	70	↑ 13
White	12,615	7,442	59	12,186	5,620	46	11,795	8,351	71	↑ 12
Race Unknown	306	93	30	361	75	21	336	146	43	↑ 13

By Voting Method

Not-In-Person Early Vote In-Person Other Provisional Unknown



	2016		2018		2020		2016-2020	
	Voted	Rate	Voted	Rate	Voted	Rate	Change (p.p.)	
Early Vote	7,757	47	5,458	41	8,392	43	-5	↓
In-Person on Election Day	6,042	37	5,544	42	3,755	19	-18	↓
Not-In-Person	2,647	16	2,200	17	7,409	38	22	↑
Other	-	-	-	-	-	-	-	
Provisional	21	0	-	-	-	-	-	
Voting Method Unknown	52	0	37	0	167	1	1	↑

These are estimated rates for vote method utilization, the number of students utilizing each method, and the percent of students utilizing each method. Not all U.S. states provide information on vote method; voting method for voter files from these states are classified "Voting Method Unknown." For a list of these states, see our FAQ. <https://idhe.tufts.edu/nsive/nsive-faq#CampusReports>

By Age Group

	2016	2018	2020
18-21	53%	41%	68%
22-24	58%	46%	69%
25-29	58%	49%	66%
30-39	63%	54%	69%
40-49	73%	65%	78%
50+	79%	79%	81%

Voting is habit-forming and young voters will usually continue as voters in subsequent elections. Also, young voters are more likely to be contacted by campaigns and are visible, and therefore significant, to elected officials. While in the past, we have seen voting rates increase across age groups, in recent cycles, the most significant increases have been among first-time and the youngest voters. Some colleges serve primarily young students, traditionally viewed as students in the 18-21 or 22-24 categories here. Others have much higher numbers of enrolled older undergraduate or graduate students.

Looking Closer

By Age Group

Here, we provide the numbers of students in each age category and the voting rates for each group. These are based on the student’s age on the day of the election, as calculated by the National Student Clearinghouse using data from student enrollment records.

	2016			2018			2020			2016-2020	
	Enrolled	Voted	Rate	Enrolled	Voted	Rate	Enrolled	Voted	Rate	Change (p.p)	
18-21	11,752	6,276	53	12,354	5,051	41	14,013	9,464	68	↑	14
22-24	6,902	4,012	58	6,555	3,047	46	6,251	4,288	69	↑	10
25-29	4,956	2,870	58	4,493	2,180	49	3,957	2,623	66	↑	8
30-39	3,092	1,949	63	3,035	1,632	54	2,911	1,998	69	↑	6
40-49	1,230	903	73	1,199	782	65	1,123	877	78	↑	5
50+	644	509	79	696	547	79	587	478	81	↑	2

Looking Closer

By Sex

	2016			2018			2020			2016-2020	
	Enrolled	Voted	Rate	Enrolled	Voted	Rate	Enrolled	Voted	Rate	Change (p.p)	
Female	16,185	9,858	61	16,181	8,048	50	17,043	12,016	71	↑	10
Male	12,387	6,661	54	12,151	5,191	43	11,797	7,712	65	↑	12

These are estimated voting rates for sex groups and the numbers we used to calculate their voting rates. These classifications are provided by campuses and are obtained following the reporting procedures defined by the National Center for Education Statistics (NCES) of the Institute of Education Sciences (IES). Presently, NCES requires institutions to report students as “Male” or “Female” only.*

If you notice missing data in this page, it could mean any of the following for your institution: (i) does not report this data; (ii) did not provide this data in past years; (iii) does not separately submit data for one or more of the demographic groups, or (iv) the data is reported for 10 or fewer students.

*<https://surveys.nces.ed.gov/ipeds/public/survey-materials/faq?faqid=11>

Looking Closer

By Education Level / Undergraduate Class Year

	2016			2018			2020			2016-2020	
	Enrolled	Voted	Rate (%)	Enrolled	Voted	Rate (%)	Enrolled	Voted	Rate (%)	Change (p.p)	
EDUCATION LEVEL											
Undergraduate	23,967	13,534	56	23,257	10,313	44	24,077	16,353	68	↑	11
Graduate	4,580	2,969	65	4,657	2,651	57	4,737	3,369	71	↑	6
Class Unknown	29	16	55	418	42	10	28	-	-	-	-
CLASS YEAR											
First Year	4,341	50	2,158	3,975	35	1,398	4,620	63	2,903	↑	13
Second Year	3,306	51	1,693	3,617	38	1,380	3,879	67	2,584	↑	15
Upper Level	15,550	59	9,156	14,820	48	7,050	14,593	69	10,129	↑	11
ENROLLMENT STATUS											
Full-time	17,659	9,726	55	17,672	7,685	43	17,972	12,205	68	↑	13
Part-time	10,917	6,793	62	10,660	5,554	52	10,870	7,523	69	↑	7

These are estimated voting rates by Education Level (undergraduate/graduate), Class Year, and Enrollment Status (full-time/part-time), and the numbers we used to calculate these rates.

If you notice missing data in this page, it could mean any of the following for your institution: (i) does not report this data; (ii) did not provide this data in past years; (iii) does not separately submit data for one or more of the demographic groups, or (iv) the data is reported for 10 or fewer students.

By Field of Study

FIELDS	2016			2018			2020			2016-2020 RateChange (p.p)
	Enrolled	Voted	Rate	Enrolled	Voted	Rate	Enrolled	Voted	Rate	
Architecture	428	210	49	429	158	37	514	330	64	↑ 15
Area, Ethnic, Cultural, and Gender Studies	11	–	–	28	20	71	32	25	78	–
Biological and Biomedical Sciences	2,543	1,437	57	2,400	1,075	45	2,381	1,629	68	↑ 12
Business, Management, and Marketing	6,626	3,606	54	7,005	2,942	42	7,319	4,728	65	↑ 10
Communication and Journalism	1,010	633	63	1,246	604	48	1,340	989	74	↑ 11
Computer and Information Sciences	547	309	56	544	229	42	653	401	61	↑ 5
Education	2,114	1,400	66	1,831	1,086	59	1,822	1,419	78	↑ 12

These are estimated voting rates by field of study, and the numbers we used to calculate the field of study rates. For an explanation of CIP codes, please see our FAQ.* There are roughly 8,000 fields of study among U.S. colleges and universities, so we provide rates for condensed categories.

*<https://tufts.app.box.com/v/idhe-nslve-report-faq>

By Field of Study

FIELDS	2016			2018			2020			2016-2020	
	Enrolled	Voted	Rate	Enrolled	Voted	Rate	Enrolled	Voted	Rate	Change (p.p)	
Engineering and Engineering Technologies	2,120	1,047	49	2,142	793	37	2,024	1,234	61	↑	12
English Language and Literature	404	279	69	326	182	56	288	214	74	↑	5
Foreign Languages, Literatures, and Lingui..	163	98	60	133	64	48	108	74	69	↑	8
Health Professions	2,268	1,499	66	2,718	1,413	52	3,564	2,627	74	↑	8
History	174	129	74	142	98	69	138	113	82	↑	8
Law Enforcement, Firefighting, and Protec..	1,332	783	59	1,270	595	47	1,285	830	65	↑	6
Liberal Arts and Sciences, and Humanities	1,268	761	60	1,895	960	51	1,269	885	70	↑	10
Mathematics and Statistics	171	93	54	159	82	52	114	73	64	↑	10
Multi/Interdisciplinary Studies	486	273	56	629	310	49	665	498	75	↑	19
Natural Resources and Conservation	29	19	66	38	26	68	48	39	81	↑	16
Parks, Recreation, Leisure, and Fitness Stu..	1,113	541	49	789	280	35	703	448	64	↑	15
Philosophy and Religious Studies	62	41	66	43	22	51	39	31	79	↑	13
Physical Sciences	411	220	54	408	178	44	418	253	61	↑	7
Psychology	1,943	1,143	59	1,666	765	46	1,752	1,195	68	↑	9

By Field of Study

FIELDS	2016			2018			2020			2016-2020 Change (p.p)
	Enrolled	Voted	Rate	Enrolled	Voted	Rate	Enrolled	Voted	Rate	
Public Administration and Social Service Professions	817	508	62	719	404	56	702	517	74	↑ 11
Social Sciences	1,635	997	61	1,072	588	55	1,004	734	73	↑ 12
Visual and Performing Arts	772	477	62	667	340	51	602	414	69	↑ 7
Unknown	129	-	-	33	25	76	58	28	48	-

About This Report

Thank you for participating in the National Study of Learning, Voting, and Engagement.

Since NSLVE's launch in 2013, nearly 1,200 colleges and universities have signed up to receive their voting rates for the 2012, 2014, 2016, 2018, and 2020 federal elections.

Along with others, your institution's participation in this study has allowed us to build a robust database of over 50 million college student records, about 10 million for each election year, that serve as a foundation for innovative research on college student political learning and engagement in democracy.

NSLVE is a signature initiative of the Institute for Democracy and Higher Education (IDHE) at Tufts University's Jonathan M. Tisch College of Civic Life. The mission of IDHE is to shift college and university priorities and culture to advance political learning, agency, and equity. We achieve our mission through research, resource development, technical assistance, and advocacy.

About the Data

The voter registration and voting rates in this report reflect the percentage of your institution's students who were eligible to vote and who actually voted in the 2016, 2018, and 2020 elections.

These results are based on enrollment records your institution submitted to the National Student Clearinghouse (NSC) and publicly available voting files collected by L2 Political.

Enrollment lists are adjusted by deducting students under age 18 (at the time of the election), people identified as non-degree seeking and those identified by campuses as "nonresident aliens" (NRAs) (the federal government's category for mostly international students). Unfortunately, not all campuses report NRAs to NSC. For those campuses, we use IPEDS to calculate the number of NRA students on each campus and adjust NSC enrollment numbers to estimate the number of students to remove. We also quality check NRA removals by verifying that there is little to no discrepancy between the number of international students reported by the campus to IPEDS and to NSC. We cannot adjust subgroup analyses absent identification of NRAs verified by the process above. We welcome closer partnerships with individual colleges and universities to provide more accurate rates. For more on the data and the matching process, see our FAQ on Campus Reports.

Florida Atlantic University

Thank you for the work you do to improve your students' political learning and engagement. We hope that you find your NSLVE report useful. For up-to-date news on NSLVE data, resources, and to sign up for our newsletter visit: <https://idhe.tufts.edu>.

References: IDHE encourages report recipients to share this report as broadly as possible, including posting it on the college or university's website. When doing so, please use the following citation: Institute for Democracy & Higher Education: National Study of Learning, Voting and Engagement. (2021). 2016, 2018, and 2020 report for _____ [name of institution]. Medford, MA.



Barnum Hall
163 Packard Ave.
Medford, MA 02155

tischcollege@tufts.edu
617.627.3453



Institute for Democracy & Higher Education:
National Study of Learning, Voting, and Engagement
Barnum Hall, Medford, MA 02155

Follow Us on Twitter: @TuftsIDHE
NSLVE@tufts.edu
617.627.0620