



October 2021

Student Voting Rates for Duquesne University

2020 NSLVE Campus Report

October 2021

Dear Colleagues:

We are pleased to send this tailored report containing your students' voting rates for 2020. This report contains three years of relevant topline data: 2016, 2018, and 2020. As always, we disaggregate the data so you can better identify and address gaps in participation.

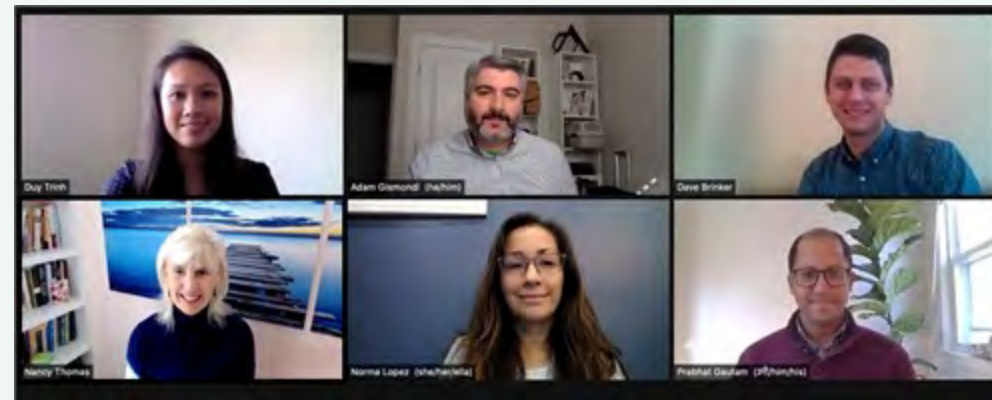
College and university students participated in record-breaking numbers in the 2020 election. In 2016, the Average Institutional Voting Rate was 53%. This year, it jumped to 66%. We encourage you to review Democracy Counts 2020, our most recent national report.

As in past years, we urge you to share this report widely and strategically, particularly with faculty who, in 2020, were often the most consistent communicators with students about ever-changing voting conditions and deadlines. We also urge you to review our recommendations for engaging elections to cultivate a robust and healthy campus climate for political engagement, discourse, equity, and participation: Election Imperatives (2019) and the more recent Election Imperatives: A Time of Physical Distancing and Social Action. Since "pervasive political discussions" and attentiveness to the campus culture around speech and academic freedom are among our top recommendations, we direct you to our discussion guides on talking about your NSLVE report, on free speech and inclusion, and on hot topics, our Making Sense of ... guides.

Finally, we always encourage you to work with us. Help us help you get better data by reaching out. Email IDHE@Tufts.edu for more information. And as always, watch your inbox for our periodic newsletter, IDHE Update, for announcements about upcoming releases and new resources.

Congratulations on engaging your students in the 2020 election. Remember, student political learning is a year-round objective. Elections may be episodic, but student political engagement should not be.

All the Best,
IDHE Team



(Top Row from left) Duy Trinh, Program Administrator; Adam Gismondi, Director of Impact; Dave Brinker, Senior Researcher;
(Bottom Row from left) Nancy Thomas, Director; Norma López, Postdoctoral Scholar; Prabhat Gautam, Data Manager.

We also want to acknowledge and thank **Syed Golam Mohaimen, M.S. student in Data Science at Tufts University** for his contributions toward the creation of these reports.

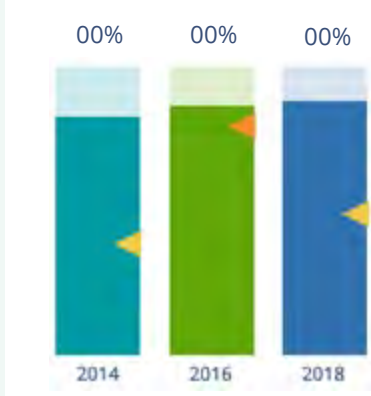
In This Report

This report presents data on student voter participation rates for your campus. The topline counts on page 5 tells you how many students voted, but we encourage you to look carefully at the data on subsequent pages to learn who voted. Data are presented in the form of vessel charts, overlapping donut charts, and tables.

Tables

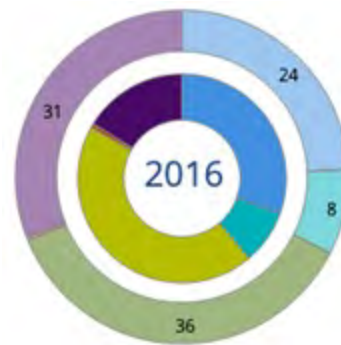
The tables show, on the left-side columns, the numbers of students and the rates from 2016, 2018, and 2020. On the left-side, percentage point (p.p.) changes between 2016 and 2020. A red down arrow indicates a decrease, a green up arrow indicates an increase, and a yellow arrow pointing to the right indicates no change. "-" in these tables indicates that the data is unavailable/missing, or is available for 10 or less students.

	2014			2018			2014-2018
	Enrolled	Voted	Rate (%)	Enrolled	Voted	Rate (%)	Change (p.p.)
Asian	-	-	-	-	-	-	-
American Indian/ Alaska Native	-	-	-	-	-	-	-
Black	-	-	-	-	-	-	-
Hispanic	-	-	-	-	-	-	-



Vessel Chart

This chart shows rates out of 100%, with arrows to the right of each bar representing relevant national averages (medians), which you can find in IDHE's national report Democracy Counts 2020.



Overlapping Donut Chart

This chart is used to show the breakdown of vote method utilization (page 10), with the outer ring showing your campus method utilization and the inner ring showing the national breakdown. These are described in percentages.

Voting, Registration and Yield Rates

YOUR INSTITUTION

74.8%
2020 Voting Rate

+14.8
Change From 2016

ALL INSTITUTIONS

66%
2020 Voting Rate

REGISTRATION RATE

Year	Registration Rate
2016	83.8%
2018	77.4%
2020	88.5%

The **Registration Rate** is the percent of your voting-eligible students who registered to vote.

VOTING RATE OF REGISTERED STUDENTS

Year	Voting Rate of Registered Students
2016	71.6%
2018	48.6%
2020	84.5%

The **Voting Rate of Registered Students** is the percent of registered students who voted on Election Day. We often refer to this as the “yield” rate.

VOTING RATE

Year	Voting Rate
2016	60.0%
2018	37.6%
2020	74.8%

The **Voting Rate** is the percentage of eligible students who voted on Election Day. The voting rate is also the product of the registration and yield rates.

Looking Closer

Voting and Registration Rates

	2016	2018	2020	2016-2020 Change (p.p.)
Total Student Enrollment	9,254	9,197	8,737	↓ -517
(Age under 18/Unknown)	-	-	-	-
(IPEDS estimated non-resident aliens)	510	443	388	↓ -122
(FERPA records blocked)	947	998	802	↓ -145
(Non-Degree Seeking Students)	-	-	92	-
Total eligible voters	7,792	7,756	7,455	↓ -336
Number of students who registered	6,526	6,001	6,601	↑ 75
Number of students who voted	4,674	2,915	5,576	↑ 902
Registration Rate %	84	77	89	↑ 5
Voting Rate of Registered Students %	72	49	84	↑ 13
Voting Rate %	60	38	75	↑ 15

This page provides the numbers we used to calculate your voting, registration, and yield rates. The sub-categories under total student enrollment are the adjustments that we make to account for students who are ineligible to vote due to age or citizenship status. We also exclude, when correctly flagged, students who are not pursuing degrees.

We use IPEDS-derived estimates of NRAs when institutions do not submit non-resident alien status data to NSC, or we cannot verify the accuracy of the reported counts. This estimate is given by "IPEDS estimated non-resident aliens" on this page. If you believe the number of international students reported on this report is incorrect, you can manually adjust your institution's voting rates by using our recalculation tool. <https://id-he.tufts.edu/nslve/nslve-recalculation-tool>.

By Institution Types

2016 Voting Rate for All Institutions

53%

**HIGH
82%**

**LOW
13%**

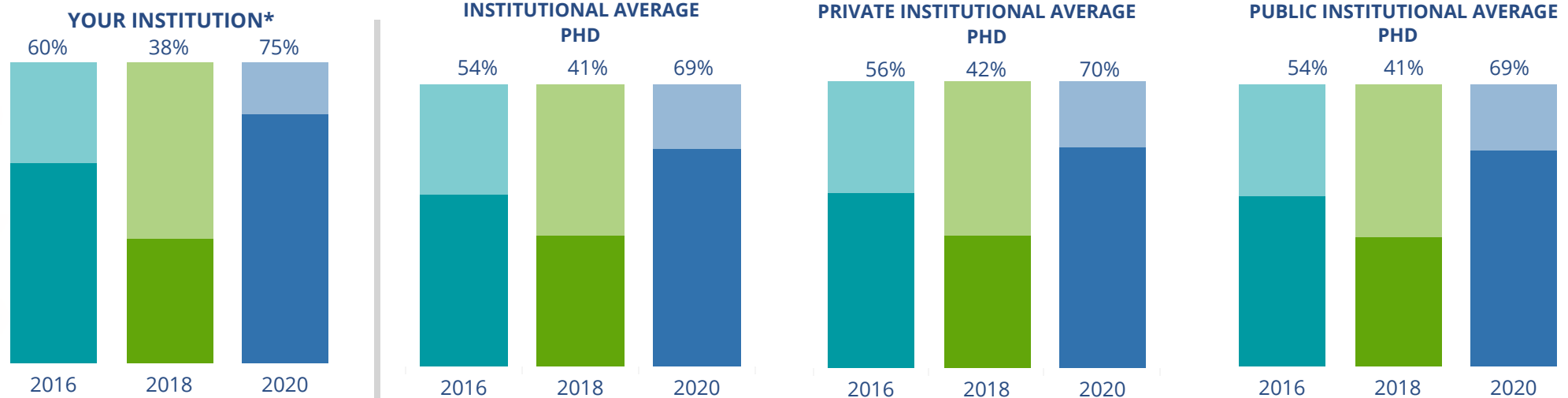
2020 Voting Rate for All Institutions

66%

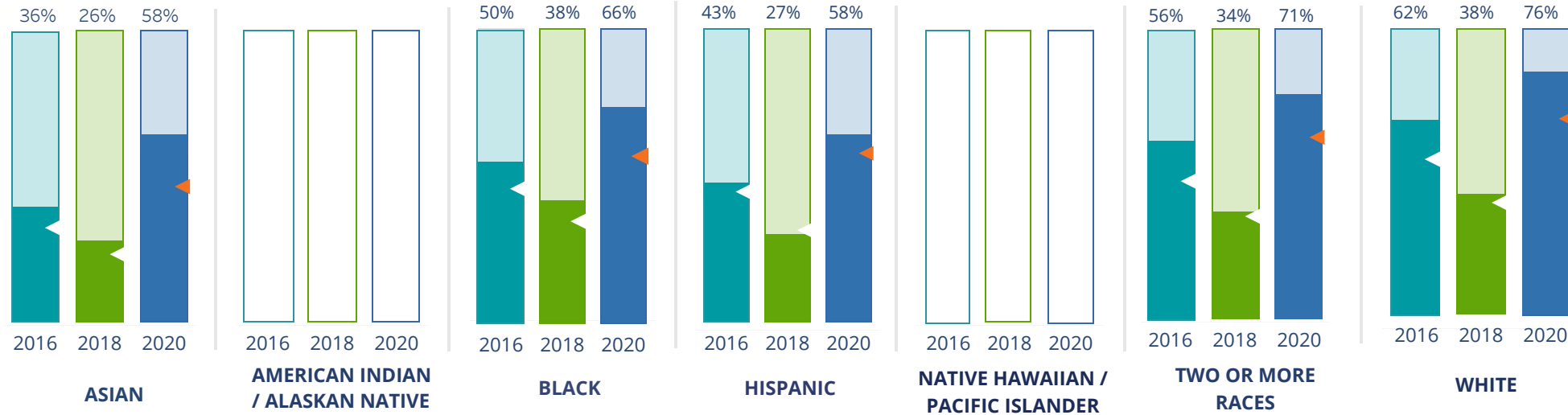
**HIGH
89%**

**LOW
19%**

These are estimated voting rates of your institution compared to the average voting rates of similar institutions in NSLVE. *"Your Institution" chart is presented at a different scale.



By Race / Ethnicity



These are estimated voting rates for race / ethnicity groups. These classifications are provided by campuses and are obtained following race reporting procedures* defined by the National Center for Education Statistics of the Institute of Education Sciences (IES). Please see our FAQ for more detail on why we cannot report national benchmark for some of the demographic groups:

<https://tufts.app.box.com/v/idhe-nslve-report-faq>

If you notice unavailable/missing data in this page, it could mean any of the following for your institution: (i) does not report this data; (ii) did not provide this data in past years; (iii) does not separately submit data for one or more of the demographic groups, or (iv) the data is reported for 10 or fewer students.

* <https://nces.ed.gov/ipeds/report-your-data/race-ethnicity-collecting-data-for-reporting-purposes>

Looking Closer

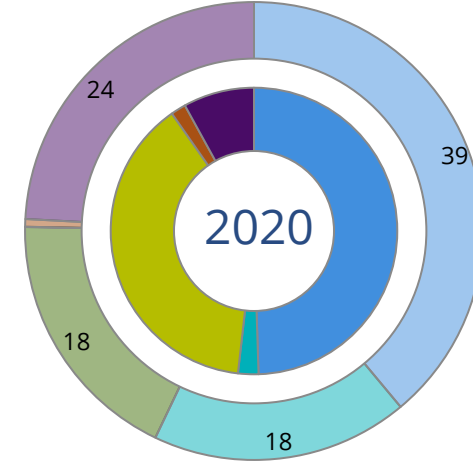
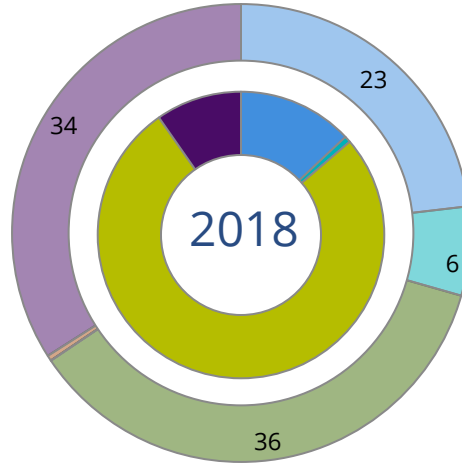
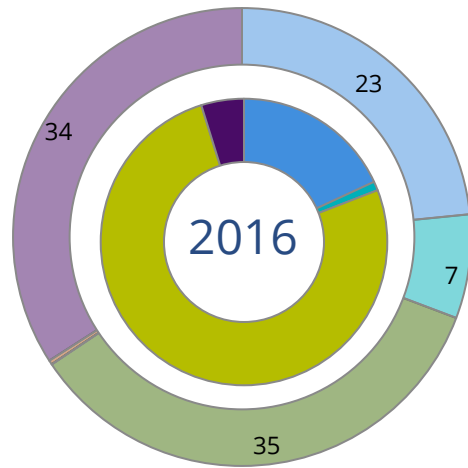
By Race/Ethnicity

This page provides the numbers we used to calculate race / ethnicity group voting rates. We include the counts of students and the change in rates between the two most recent comparable election years. If you notice unavailable/missing data in this page, it could mean any of the following for your institution: (i) does not report this data; (ii) did not provide this data in past years; (iii) does not separately submit data for one or more of the demographic groups, or (iv) the data is reported for 10 or fewer students.

	2016			2018			2020			2016-2020 Change (p.p)
	Enrolled	Voted	Rate	Enrolled	Voted	Rate	Enrolled	Voted	Rate	
Asian	271	97	36	314	80	25	291	170	58	↑ 23
American Indian/ Alaska Native	-	-	-	-	-	-	-	-	-	-
Black	422	210	50	427	162	38	449	298	66	↑ 17
Hispanic	241	104	43	299	82	27	351	203	58	↑ 15
Native Hawaiian/ Pacific Islander	-	-	-	-	-	-	-	-	-	-
2 or More Races	210	118	56	230	78	34	241	170	71	↑ 14
White	6,602	4,059	61	6,499	2,489	38	6,159	4,708	76	↑ 15
Race Unknown	547	83	15	415	20	5	337	20	6	↓ -9

By Voting Method

■ Not-In-Person
 ■ Early Vote
 ■ In-Person
 ■ Other
 ■ Provisional
 ■ Unknown



	2016		2018		2020		2016-2020	
	Voted	Rate	Voted	Rate	Voted	Rate	Change (p.p.)	
Early Vote	45	1	20	1	130	2	1	↑
In-Person on Election Day	3,556	76	2,234	77	2,149	39	-38	↓
Not-In-Person	848	18	380	13	2,759	50	31	↑
Other	-	-	-	-	-	-	-	
Provisional	-	-	-	-	97	2	-	
Voting Method Unknown	223	5	281	10	441	8	3	↑

These are estimated rates for vote method utilization, the number of students utilizing each method, and the percent of students utilizing each method. Not all U.S. states provide information on vote method; voting method for voter files from these states are classified "Voting Method Unknown." For a list of these states, see our FAQ. <https://idhe.tufts.edu/nsive/nsive-faq#CampusReports>

By Age Group

	2016	2018	2020
18-21	53%	28%	71%
22-24	57%	37%	75%
25-29	61%	50%	70%
30-39	59%	51%	60%
40-49	74%	59%	68%
50+	72%	75%	86%

Voting is habit-forming and young voters will usually continue as voters in subsequent elections.

Also, young voters are more likely to be contacted by campaigns and are visible, and therefore significant, to elected officials. While in the past, we have seen voting rates increase across age groups, in recent cycles, the most significant increases have been among first-time and the youngest voters. Some colleges serve primarily young students, traditionally viewed as students in the 18-21 or 22-24 categories here. Others have much higher numbers of enrolled older undergraduate or graduate students.

Looking Closer

By Age Group

Here, we provide the numbers of students in each age category and the voting rates for each group. These are based on the student's age on the day of the election, as calculated by the National Student Clearinghouse using data from student enrollment records.

	2016			2018			2020			2016-2020 Change (p.p)
	Enrolled	Voted	Rate	Enrolled	Voted	Rate	Enrolled	Voted	Rate	
18-21	4,585	2,451	53	4,626	1,299	28	4,294	3,062	71	↑ 18
22-24	1,817	1,033	57	1,795	669	37	1,736	1,294	75	↑ 18
25-29	936	569	61	849	425	50	831	579	70	↑ 9
30-39	581	340	59	558	283	51	592	355	60	↑ 1
40-49	247	184	74	244	144	59	256	175	68	↓ -6
50+	134	97	72	126	95	75	129	111	86	↑ 14

Looking Closer

By Sex

	2016			2018			2020			2016-2020	
	Enrolled	Voted	Rate	Enrolled	Voted	Rate	Enrolled	Voted	Rate	Change (p.p)	
Female	5,111	3,027	59	5,127	1,919	37	5,039	3,748	74	↑	15
Male	3,159	1,628	52	3,065	993	32	2,795	1,825	65	↑	14

These are estimated voting rates for sex groups and the numbers we used to calculate their voting rates. These classifications are provided by campuses and are obtained following the reporting procedures defined by the National Center for Education Statistics (NCES) of the Institute of Education Sciences (IES). Presently, NCES requires institutions to report students as “Male” or “Female” only.*

If you notice missing data in this page, it could mean any of the following for your institution: (i) does not report this data; (ii) did not provide this data in past years; (iii) does not separately submit data for one or more of the demographic groups, or (iv) the data is reported for 10 or fewer students.

*<https://surveys.nces.ed.gov/ipeds/public/survey-materials/faq?faqid=11>

Looking Closer

By Education Level / Undergraduate Class Year

	2016			2018			2020			2016-2020
	Enrolled	Voted	Rate (%)	Enrolled	Voted	Rate (%)	Enrolled	Voted	Rate (%)	Change (p.p)
EDUCATION LEVEL										
Undergraduate	5,592	3,008	54	5,584	1,619	29	4,591	3,264	71	↑ 17
Graduate	2,578	1,627	63	2,489	1,254	50	3,225	2,301	71	↑ 8
Class Unknown	130	32	25	125	37	30	22	11	50	↑ 25
CLASS YEAR										
First Year	1,611	49	786	1,682	21	351	1,309	67	875	↑ 18
Second Year	1,206	52	633	1,268	27	346	1,173	70	822	↑ 18
Upper Level	2,679	57	1,528	2,549	35	894	2,545	73	1,864	↑ 16
ENROLLMENT STATUS										
Full-time	7,708	4,293	56	7,857	2,741	35	7,432	5,317	72	↑ 16
Part-time	592	381	64	341	174	51	406	259	64	↓ -1

These are estimated voting rates by Education Level (undergraduate/graduate), Class Year, and Enrollment Status (full-time/part-time), and the numbers we used to calculate these rates.

If you notice missing data in this page, it could mean any of the following for your institution: (i) does not report this data; (ii) did not provide this data in past years; (iii) does not separately submit data for one or more of the demographic groups, or (iv) the data is reported for 10 or fewer students.

By Field of Study

FIELDS	2016			2018			2020			2016-2020 RateChange (p.p)
	Enrolled	Voted	Rate	Enrolled	Voted	Rate	Enrolled	Voted	Rate	
Biological and Biomedical Sciences	308	152	49	334	99	30	312	205	66	↑ 16
Business, Management, and Marketing	1,605	825	51	1,558	473	30	1,421	931	66	↑ 14
Communication and Journalism	261	148	57	253	98	39	230	164	71	↑ 15
Computer and Information Sciences	268	141	53	248	69	28	206	120	58	↑ 6
Education	692	465	67	696	337	48	717	536	75	↑ 8
Engineering and Engineering Technologies	68	32	47	97	25	26	103	78	76	↑ 29
English Language and Literature	186	117	63	189	88	47	172	124	72	↑ 9

These are estimated voting rates by field of study, and the numbers we used to calculate the field of study rates. For an explanation of CIP codes, please see our FAQ.* There are roughly 8,000 fields of study among U.S. colleges and universities, so we provide rates for condensed categories.

*<https://tufts.app.box.com/v/idhe-nslve-report-faq>

By Field of Study

FIELDS	2016			2018			2020			2016-2020 Change (p.p)
	Enrolled	Voted	Rate	Enrolled	Voted	Rate	Enrolled	Voted	Rate	
Foreign Languages, Literatures, and Lingui..	-	-	-	-	-	-	-	-	-	-
Health Professions	2,897	1,567	54	2,849	897	31	2,853	2,073	73	↑ 19
History	101	79	78	95	60	63	71	61	86	↑ 8
Law Enforcement, Firefighting, and Protec..	85	50	59	103	32	31	120	82	68	↑ 10
Legal Professions and Studies	372	267	72	421	236	56	457	387	85	↑ 13
Liberal Arts and Sciences, and Humanities	164	64	39	144	33	23	96	67	70	↑ 31
Mathematics and Statistics	53	39	74	57	23	40	56	42	75	↑ 1
Multi/Interdisciplinary Studies	24	16	67	-	-	-	13	-	-	-
Natural Resources and Conservation	60	45	75	52	27	52	54	44	81	↑ 6
Philosophy and Religious Studies	72	41	57	65	24	37	54	21	39	↓ -18
Physical Sciences	86	54	63	93	39	42	83	67	81	↑ 18
Psychology	363	222	61	326	118	36	309	215	70	↑ 8
Public Administration and Social Service P..	-	-	-	16	-	-	30	24	80	-
Social Sciences	258	164	64	276	122	44	234	174	74	↑ 11

By Field of Study

FIELDS	2016			2018			2020			2016-2020 Change (p.p)
	Enrolled	Voted	Rate	Enrolled	Voted	Rate	Enrolled	Voted	Rate	
Visual and Performing Arts	174	94	54	160	51	32	139	87	63	↑ 9
Unknown	118	42	36	100	26	26	57	35	61	↑ 26

About This Report

Thank you for participating in the National Study of Learning, Voting, and Engagement.

Since NSLVE's launch in 2013, nearly 1,200 colleges and universities have signed up to receive their voting rates for the 2012, 2014, 2016, 2018, and 2020 federal elections.

Along with others, your institution's participation in this study has allowed us to build a robust database of over 50 million college student records, about 10 million for each election year, that serve as a foundation for innovative research on college student political learning and engagement in democracy.

NSLVE is a signature initiative of the Institute for Democracy and Higher Education (IDHE) at Tufts University's Jonathan M. Tisch College of Civic Life. The mission of IDHE is to shift college and university priorities and culture to advance political learning, agency, and equity. We achieve our mission through research, resource development, technical assistance, and advocacy.

About the Data

The voter registration and voting rates in this report reflect the percentage of your institution's students who were eligible to vote and who actually voted in the 2016, 2018, and 2020 elections.

These results are based on enrollment records your institution submitted to the National Student Clearinghouse (NSC) and publicly available voting files collected by L2 Political.

Enrollment lists are adjusted by deducting students under age 18 (at the time of the election), people identified as non-degree seeking and those identified by campuses as "nonresident aliens" (NRAs) (the federal government's category for mostly international students). Unfortunately, not all campuses report NRAs to NSC. For those campuses, we use IPEDS to calculate the number of NRA students on each campus and adjust NSC enrollment numbers to estimate the number of students to remove. We also quality check NRA removals by verifying that there is little to no discrepancy between the number of international students reported by the campus to IPEDS and to NSC. We cannot adjust subgroup analyses absent identification of NRAs verified by the process above. We welcome closer partnerships with individual colleges and universities to provide more accurate rates. For more on the data and the matching process, see our FAQ on Campus Reports.

Duquesne University

Thank you for the work you do to improve your students' political learning and engagement. We hope that you find your NSLVE report useful. For up-to-date news on NSLVE data, resources, and to sign up for our newsletter visit: <https://idhe.tufts.edu>.

References: IDHE encourages report recipients to share this report as broadly as possible, including posting it on the college or university's website. When doing so, please use the following citation: Institute for Democracy & Higher Education: National Study of Learning, Voting and Engagement. (2021). 2016, 2018, and 2020 report for _____ [name of institution]. Medford, MA.



Barnum Hall
163 Packard Ave.
Medford, MA 02155

tischcollege@tufts.edu
617.627.3453



Institute for Democracy & Higher Education:
National Study of Learning, Voting, and Engagement
Barnum Hall, Medford, MA 02155

Follow Us on Twitter: @TuftsIDHE
NSLVE@tufts.edu
617.627.0620