

2012 & 2016 CAMPUS REPORT

Student Voting Rates for
De Anza College

WHAT'S INSIDE

About This Report

Your Institution's Voting Data

Voting and Registration Rates

How Your Institution's Numbers
Compare

Your Students' Voting Data

By Voting Method

By Age Group

By Program of Study

By Enrollment Status

By Gender

By Field of Study

About This Report

Thank you for participating in the National Study of Learning, Voting, and Engagement (NSLVE). Since NSLVE's launch in 2013, more than 1,000 colleges and universities have signed up to receive their voting rates for the 2012, 2014 and 2016 federal elections. Along with others, your institution's participation in this study has allowed us to build a robust database of nearly 30 million college student records, about 10 million for each election year, that serve as a foundation for innovative research on college student political learning and engagement in democracy.

NSLVE is a signature initiative of the Institute for Democracy and Higher Education (IDHE) at Tufts University's Jonathan M. Tisch College of Civic Life. The mission of IDHE is to shift college and university priorities and culture to advance political learning, agency, and equity. We achieve our mission through research, resource development, technical assistance, and advocacy.

About the Data

The voter registration and voting rates in this report reflect the percentage of your institution's students who were eligible to vote and who actually voted in the 2012 and 2016 elections. These results are based on enrollment records your institution submitted to the National Student Clearinghouse (FERPA-blocked records excluded) and publicly available voting files collected by Catalyst.

Institutional voting rates are adjusted by deducting an estimated number of students identified by each institution as non-resident aliens and reported to the Integrated Postsecondary Education Data System (IPEDS). For breakdowns by student characteristics, we cannot consistently adjust for students who are non-resident aliens, resident aliens, or undocumented students. This may result in your institution's actual voting rate being higher than we report. To calculate that percentage, and to read more about NSLVE data, see our [FAQ on Campus Reports](#). Please also see [Creating and Maintaining the NSLVE Database](#) paper for a more detailed study methodology.

Reviewing the Data

Use the following key to interpret the charts:

* = number of students is less than 10

n/a = no data was collected or calculated for this field.

What to do next?

- Review the data. This report provides a baseline measure of your students' engagement in democracy in 2012 and 2016, and compares your institution's voting rates to similar institutions. Visit our website for more comparison data.
- Share the report widely and strategically, including posting it online.
- Put your data into practice. Use our IDHE Resources to guide you.
- Address your campus climate for student political learning, discourse, and participation. Start by bringing the IDHE team to your campus or using the IDHE self-assessment rubric available on our website.
- Partner with IDHE. We are available with virtual office hours, webinars, brown bag discussions and in-person trainings.

For up-to-date news on NSLVE data, resources and upcoming opportunities visit our website: idhe.tufts.edu.

Follow us on Twitter [@TuftsIDHE](https://twitter.com/TuftsIDHE) or email us at NSLVE@tufts.edu.

Warm regards,
IDHE Team



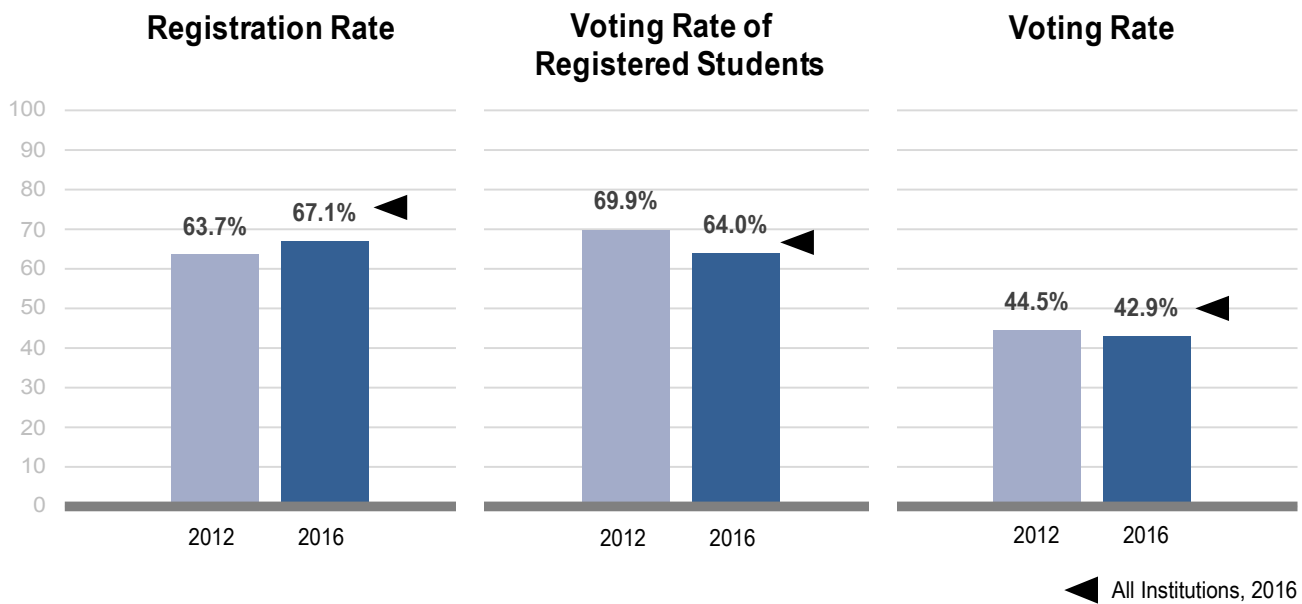
YOUR STUDENTS' VOTING DATA | PRESIDENTIAL ELECTIONS

Voting and Registration Rates

2016 Voting Rate
42.9%

CHANGE FROM 2012
-1.5

2016 VOTING RATE FOR ALL INSTITUTIONS
50.4%



	2012	2016	Change
Total student enrollment	20,446	18,413	↓ -2,033
Age under 18/Unknown	(514)	(205)	
IPEDS estimated non-resident aliens	(1,675)	(1,848)	
FERPA records blocked	*	*	
Total eligible voters	18,250	16,357	↓ -1,893
Number of students who registered	11,619	10,972	↓ -647
Number of students who voted	8,117	7,024	↓ -1,093
Registration rate	63.7%	67.1%	↑ 3.4
Voting rate of registered students	69.9%	64.0%	↓ -5.8
Voting rate	44.5%	42.9%	↓ -1.5
Difference from all institutions	-2.4	-7.5	

HOW YOUR NUMBERS COMPARE | PRESIDENTIAL ELECTIONS

By Carnegie Classification

2012 Voting Rate for All Institutions
46.9%

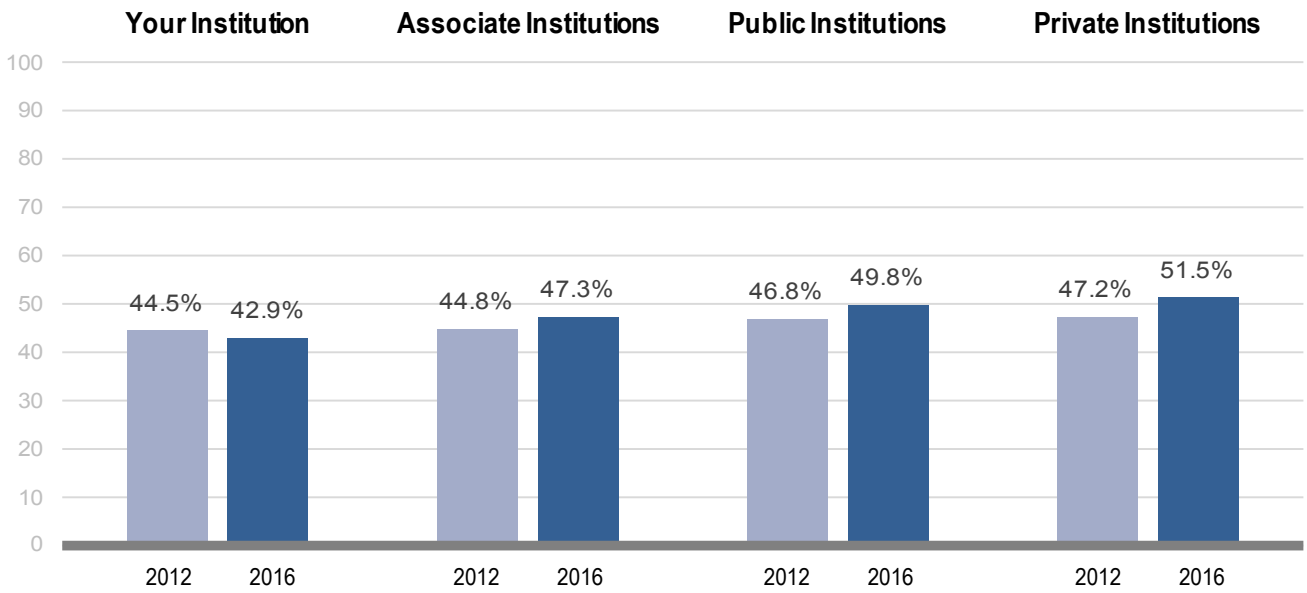
HIGH 72.9%
 LOW 19.3%

2016 Voting Rate for All Institutions
50.4%

HIGH 81.4%
 LOW 13.1%

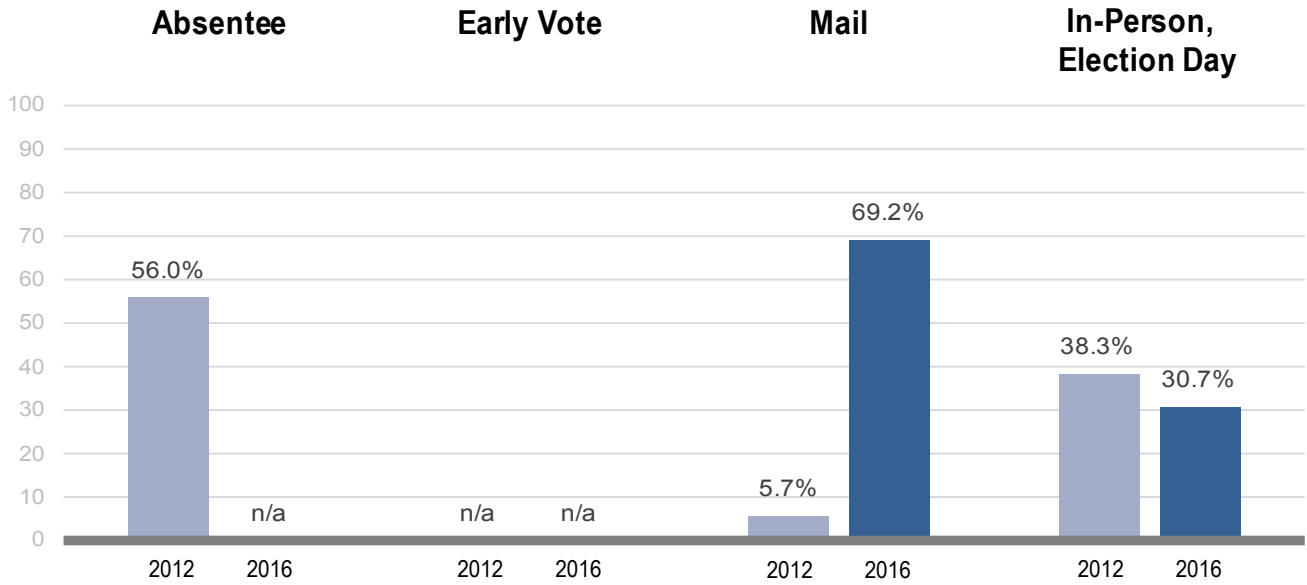
Difference from All Institutions **-2.4**

Difference from All Institutions **-7.5**



YOUR STUDENTS' VOTING DATA | PRESIDENTIAL ELECTIONS

By Voting Method*

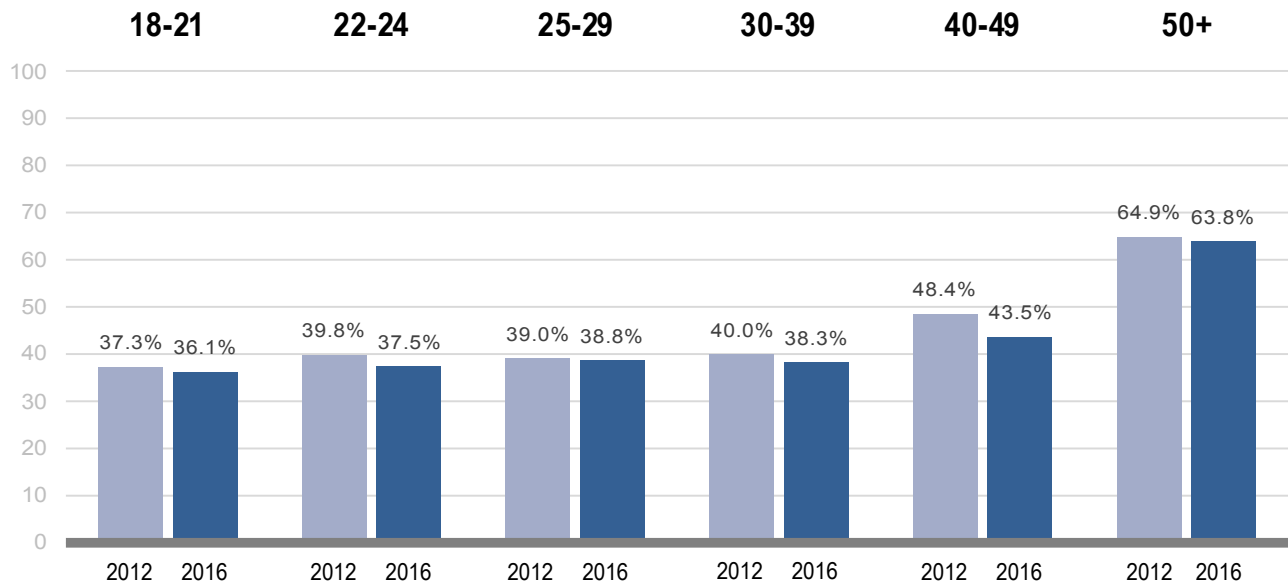


	2012		2016		Change
	Voted	Rate	Voted	Rate	
Absentee	4,542	56.0%	*	n/a	n/a
Early Vote	*	n/a	*	n/a	n/a
Mail	459	5.7%	4,859	69.2%	↑ 63.5
In-Person, Election Day	3,108	38.3%	2,153	30.7%	↓ -7.6
Unknown	*	n/a	*	n/a	
Total	8,117		7,024		

* Your students' data broken down by voting method. If your campus has a high number of voting method "Unknown", it means that this information was not reported by local officials where your students voted.

YOUR STUDENTS' VOTING DATA | PRESIDENTIAL ELECTIONS

By Age Group*

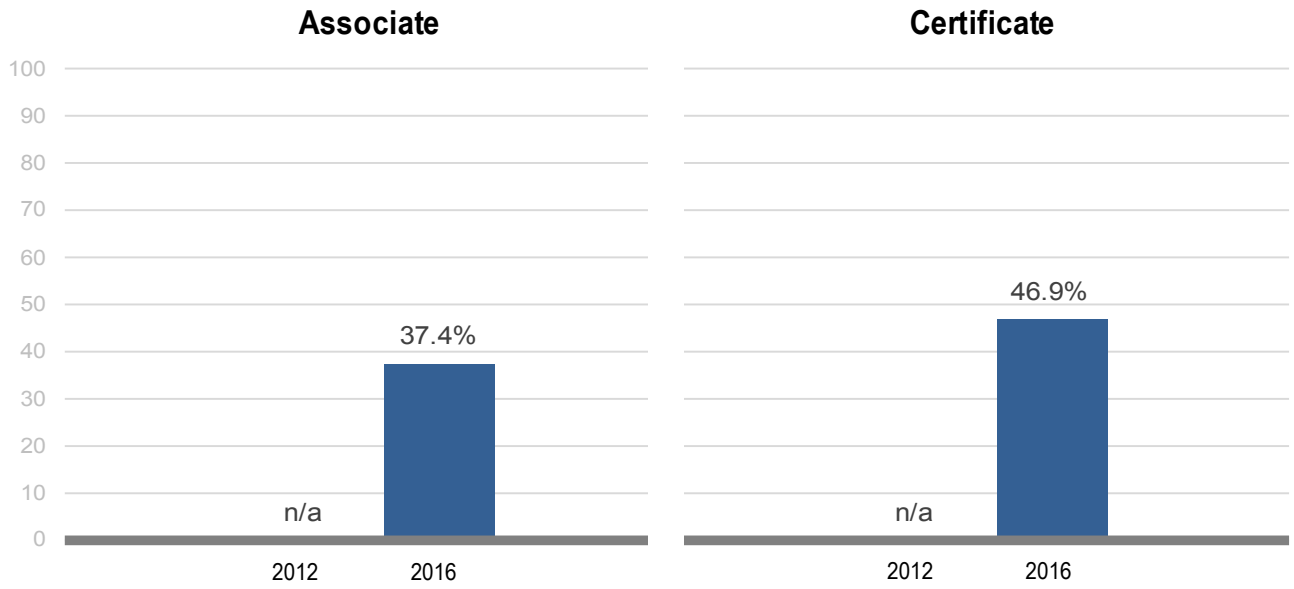


	2012			2016			Change
	Enrolled	Voted	Rate	Enrolled	Voted	Rate	
18-21	9,239	3,447	37.3%	9,363	3,379	36.1%	↓ -1.2
22-24	3,353	1,336	39.8%	3,158	1,185	37.5%	↓ -2.3
25-29	2,563	1,000	39.0%	2,246	871	38.8%	↓ -0.2
30-39	2,203	880	40.0%	1,693	648	38.3%	↓ -1.7
40-49	1,278	618	48.4%	852	371	43.5%	↓ -4.8
50+	1,289	836	64.9%	893	570	63.8%	↓ -1.0
Unknown	*			0			

* Your students' data broken down by age at the time of the election. To provide more accurate voting rates, students ineligible to vote because they were too young, students whose age data was not reported to the Clearinghouse, as well as records that were FERPA blocked are removed from this table. Please note that we are not able to adjust these voting rates by removing non-resident aliens, resident aliens or undocumented students.

YOUR STUDENTS' VOTING DATA | PRESIDENTIAL ELECTIONS

By Program of Study*

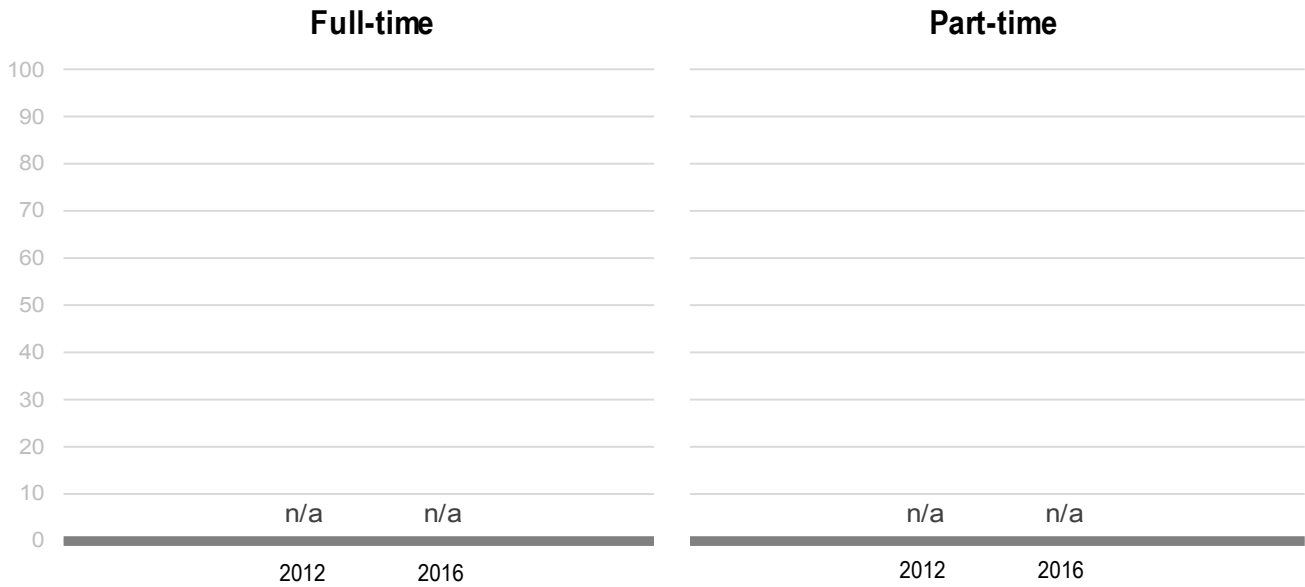


	2012			2016			Change
	Enrolled	Voted	Rate	Enrolled	Voted	Rate	
Associate	*	*	n/a	15,267	5,716	37.4%	n/a
Certificate	0	0	n/a	1,724	809	46.9%	n/a

* Your students' data broken down by undergraduate and graduate students. To provide more accurate voting rates, students ineligible to vote because they were too young, students whose age data was not reported to the Clearinghouse, as well as records that were FERPA blocked are removed from this table. Please note that we are not able to adjust these voting rates by removing non-resident aliens, resident aliens or undocumented students.

YOUR STUDENTS' VOTING DATA | PRESIDENTIAL ELECTIONS

By Enrollment Status*

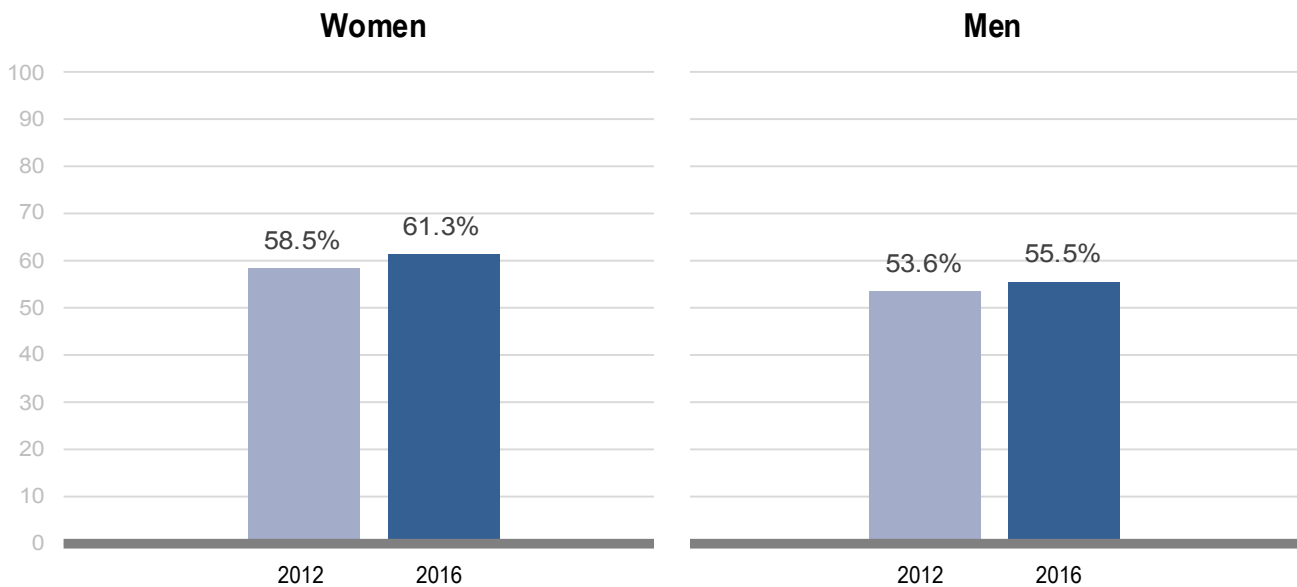


	2012			2016			Change
	Enrolled	Voted	Rate	Enrolled	Voted	Rate	
Full-time	0	0	n/a	0	0	n/a	n/a
Part-time	0	0	n/a	0	0	n/a	n/a
Unknown	0	0	n/a	0	0	n/a	

* Your students' data broken down by part-time and full-time students. To provide more accurate voting rates, students ineligible to vote because they were too young, students whose age data was not reported to the Clearinghouse, as well as records that were FERPA blocked are removed from this table. Please note that we are not able to adjust these voting rates by removing non-resident aliens, resident aliens or undocumented students.

YOUR STUDENTS' VOTING DATA | PRESIDENTIAL ELECTIONS

By Gender*



	2012			2016			Change
	Enrolled	Voted	Rate	Enrolled	Voted	Rate	
Women	6,953	4,064	58.5%	5,739	3,518	61.3%	↑ 2.8
Men	7,159	3,837	53.6%	5,895	3,269	55.5%	↑ 1.9
Unknown	5,813	216	3.7%	6,571	237	3.6%	

* Your students' data broken down by gender. To provide more accurate voting rates, students ineligible to vote because they were too young, students whose age data was not reported to the Clearinghouse, as well as records that were FERPA blocked are removed from this table. Please note that we are not able to adjust these voting rates by removing non-resident aliens, resident aliens or undocumented students.

YOUR STUDENTS' VOTING DATA | PRESIDENTIAL ELECTIONS

By Field of Study*

* Your students' data broken down by field of study. To provide more accurate voting rates, students ineligible to vote because they were too young, students whose age data was not reported to the Clearinghouse, as well as records that were FERPA blocked are removed from this table. Please note that we are not able to adjust these voting rates by removing non-resident aliens, resident aliens or undocumented students. The green and red highlighted values below represent your campus's top three and bottom three voting rates by field of study.

	2012			2016			Change
	Enrolled	Voted	Rate	Enrolled	Voted	Rate	
Agriculture and Agriculture Operations	0	0	n/a	*	*	n/a	n/a
Area, Ethnic, Cultural, Gender, and Group Studies	0	0	n/a	53	30	56.6%	n/a
Biological and Biomedical Sciences	0	0	n/a	1,192	467	39.2%	n/a
Business, Management, and Marketing	0	0	n/a	3,786	1,183	31.3%	n/a
Communication and Journalism	0	0	n/a	507	224	44.2%	n/a
Communications Technologies/Technicians	0	0	n/a	183	79	43.2%	n/a
Computer and Information Sciences	0	0	n/a	1,538	531	34.5%	n/a
Education	0	0	n/a	149	57	38.3%	n/a
Engineering and Engineering Technologies	0	0	n/a	299	150	50.2%	n/a
English Language and Literature	0	0	n/a	433	144	33.3%	n/a
Family and Consumer/Human Sciences	0	0	n/a	679	260	38.3%	n/a
Foreign Languages, Literatures, and Linguistics	0	0	n/a	19	11	57.9%	n/a
Health Professions	0	0	n/a	1,961	790	40.3%	n/a
History	0	0	n/a	107	59	55.1%	n/a
Law Enforcement, Firefighting, and Protective Services	0	0	n/a	487	180	37.0%	n/a
Legal Professions and Studies	0	0	n/a	167	82	49.1%	n/a
Liberal Arts and Sciences, and Humanities	0	0	n/a	1,737	789	45.4%	n/a
Mathematics and Statistics	0	0	n/a	198	79	39.9%	n/a
Mechanic and Repair Technologies/Technicians	0	0	n/a	384	122	31.8%	n/a
Multi/Interdisciplinary Studies	0	0	n/a	1,290	429	33.3%	n/a
Natural Resources and Conservation	0	0	n/a	64	42	65.6%	n/a
Parks, Recreation, Leisure, and Fitness Studies	0	0	n/a	527	200	38.0%	n/a
Physical Sciences	0	0	n/a	*	*	n/a	n/a

Precision Production	0	0	n/a	153	70	45.8%	n/a
Psychology	0	0	n/a	35	19	54.3%	n/a
Public Administration and Social Service Professions	0	0	n/a	*	*	n/a	n/a
Social Sciences	0	0	n/a	1,084	520	48.0%	n/a
Visual and Performing Arts	0	0	n/a	1,059	445	42.0%	n/a
Unknown	19,925	8,117	40.7%	95	53	55.8% ↑	15.1

Thank you for the work you do to improve your students' political learning and engagement. We hope that you find your NSLVE report useful. For up-to-date news on NSLVE data, resources, and to sign up for our newsletter visit: idhe.tufts.edu.

References:

NSLVE encourages to share this report as broadly as possible, including posting it. When doing so, please use the following citation: Institute for Democracy & Higher Education: National Study of Learning, Voting and Engagement. (2016). *2012 & 2016 NSLVE Campus Report*. Medford, MA.

Follow us:  [@TuftsIDHE](https://twitter.com/TuftsIDHE)

Contact us:

Institute for Democracy & Higher Education:
 National Study of Learning, Voting and Engagement
 Lincoln Filene Hall, Medford, MA 02155
NSLVE@tufts.edu | 617-627-3804

