



October 2021

Student Voting Rates for Community College Of Philadelphia

2020 NSLVE Campus Report



Jonathan M. Tisch
College of Civic Life



INSTITUTE FOR DEMOCRACY
& HIGHER EDUCATION

October 2021

Dear Colleagues:

We are pleased to send this tailored report containing your students' voting rates for 2020. This report contains three years of relevant topline data: 2016, 2018, and 2020. As always, we disaggregate the data so you can better identify and address gaps in participation.

College and university students participated in record-breaking numbers in the 2020 election. In 2016, the Average Institutional Voting Rate was 53%. This year, it jumped to 66%. We encourage you to review Democracy Counts 2020, our most recent national report.

As in past years, we urge you to share this report widely and strategically, particularly with faculty who, in 2020, were often the most consistent communicators with students about ever-changing voting conditions and deadlines. We also urge you to review our recommendations for engaging elections to cultivate a robust and healthy campus climate for political engagement, discourse, equity, and participation: Election Imperatives (2019) and the more recent Election Imperatives: A Time of Physical Distancing and Social Action. Since "pervasive political discussions" and attentiveness to the campus culture around speech and academic freedom are among our top recommendations, we direct you to our discussion guides on talking about your NSLVE report, on free speech and inclusion, and on hot topics, our Making Sense of ... guides.

Finally, we always encourage you to work with us. Help us help you get better data by reaching out. Email IDHE@Tufts.edu for more information. And as always, watch your inbox for our periodic newsletter, IDHE Update, for announcements about upcoming releases and new resources.

Congratulations on engaging your students in the 2020 election. Remember, student political learning is a year-round objective. Elections may be episodic, but student political engagement should not be.

All the Best,
IDHE Team



(Top Row from left) Duy Trinh, Program Administrator; Adam Gismondi, Director of Impact; Dave Brinker, Senior Researcher;
(Bottom Row from left) Nancy Thomas, Director; Norma López, Postdoctoral Scholar; Prabhat Gautam, Data Manager.

We also want to acknowledge and thank **Syed Golam Mohaimen, M.S. student in Data Science at Tufts University** for his contributions toward the creation of these reports.

In This Report

This report presents data on student voter participation rates for your campus. The topline counts on page 5 tells you how many students voted, but we encourage you to look carefully at the data on subsequent pages to learn who voted. Data are presented in the form of vessel charts, overlapping donut charts, and tables.



Vessel Chart

This chart shows rates out of 100%, with arrows to the right of each bar representing relevant national averages (medians), which you can find in IDHE's national report Democracy Counts 2020.

	2014			2018			2014-2018
	Enrolled	Voted	Rate (%)	Enrolled	Voted	Rate (%)	Change (p.p.)
Asian	-	-	-	-	-	-	-
American Indian/ Alaska Native	-	-	-	-	-	-	-
Black	-	-	-	-	-	-	-
Hispanic	-	-	-	-	-	-	-

Tables

The tables show, on the left-side columns, the numbers of students and the rates from 2016, 2018, and 2020. On the left-side, percentage point (p.p.) changes between 2016 and 2020. A red down arrow indicates a decrease, a green up arrow indicates an increase, and a yellow arrow pointing to the right indicates no change. "-" in these tables indicates that the data is unavailable/missing, or is available for 10 or less students.



Overlapping Donut Chart

This chart is used to show the breakdown of vote method utilization (page 10), with the outer ring showing your campus method utilization and the inner ring showing the national breakdown. These are described in percentages.

Voting, Registration and Yield Rates

YOUR INSTITUTION

55.7%

2020 Voting Rate

-0.1

Change From 2016

ALL INSTITUTIONS

66%

2020 Voting Rate

REGISTRATION RATE

69.3%	63.8%	70.0%
2016	2018	2020

The **Registration Rate** is the percent of your voting-eligible students who registered to vote.

VOTING RATE OF REGISTERED STUDENTS

80.5%	61.9%	79.5%
2016	2018	2020

The **Voting Rate of Registered Students** is the percent of registered students who voted on Election Day. We often refer to this as the “yield” rate.

VOTING RATE

55.8%	39.5%	55.7%
2016	2018	2020

The **Voting Rate** is the percentage of eligible students who voted on Election Day. The voting rate is also the product of the registration and yield rates.

Looking Closer

Voting and Registration Rates

	2016	2018	2020	2016-2020 Change (p.p.)
Total Student Enrollment	17,128	15,442	12,315	↓ -4,813
(Age under 18/Unknown)	-	-	-	-
(IPEDS estimated non-resident aliens)	477	483	340	↓ -136
(FERPA records blocked)	-	-	-	-
(Non-Degree Seeking Students)	932	779	820	↓ -112
Total eligible voters	15,710	14,177	11,150	↓ -4,560
Number of students who registered	10,889	9,045	7,807	↓ -3,082
Number of students who voted	8,768	5,603	6,207	↓ -2,561
Registration Rate %	69	64	70	↑ 1
Voting Rate of Registered Students %	81	62	80	↓ -1
Voting Rate %	56	40	56	↓ 0

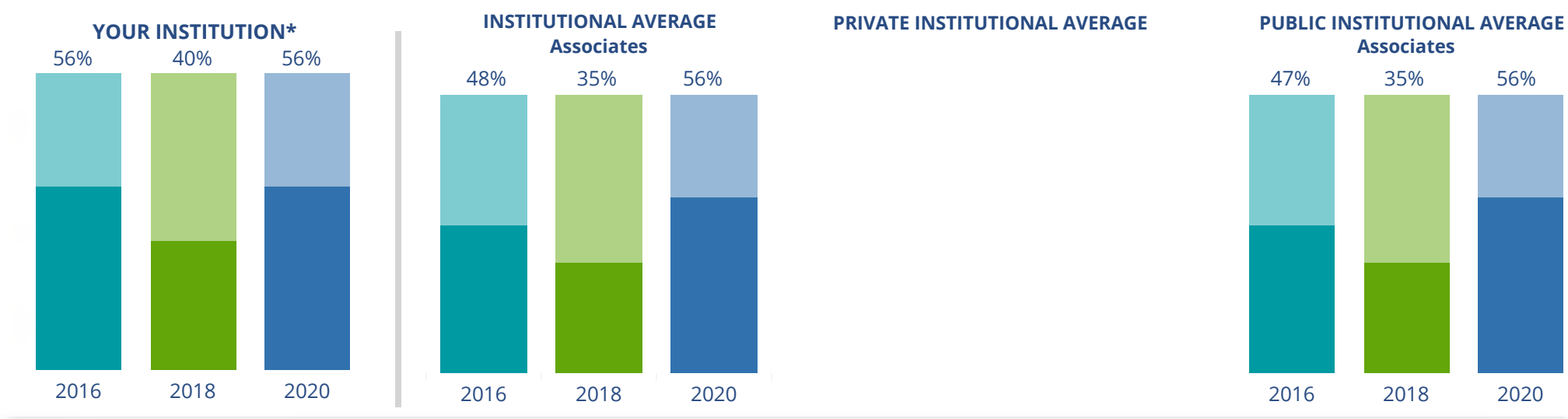
This page provides the numbers we used to calculate your voting, registration, and yield rates. The sub-categories under total student enrollment are the adjustments that we make to account for students who are ineligible to vote due to age or citizenship status. We also exclude, when correctly flagged, students who are not pursuing degrees.

We use IPEDS-derived estimates of NRAs when institutions do not submit non-resident alien status data to NSC, or we cannot verify the accuracy of the reported counts. This estimate is given by "IPEDS estimated non-resident aliens" on this page. If you believe the number of international students reported on this report is incorrect, you can manually adjust your institution's voting rates by using our recalculation tool. <https://id-he.tufts.edu/nsive/nsive-recalculation-tool>.

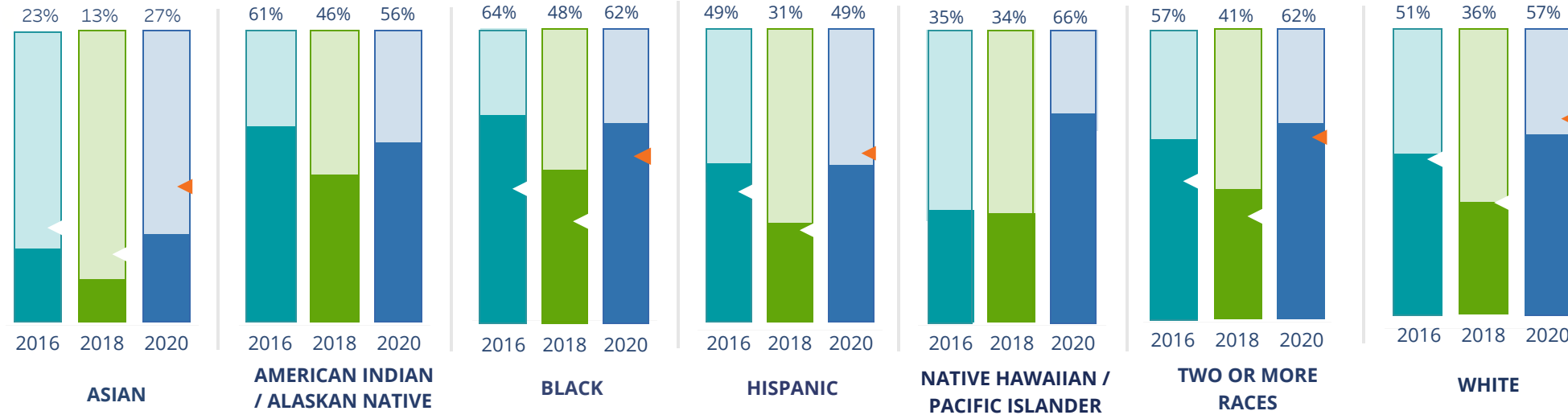
By Institution Types



These are estimated voting rates of your institution compared to the average voting rates of similar institutions in NSLVE. *"Your Institution" chart is presented at a different scale.



By Race / Ethnicity



These are estimated voting rates for race / ethnicity groups. These classifications are provided by campuses and are obtained following race reporting procedures* defined by the National Center for Education Statistics of the Institute of Education Sciences (IES). Please see our FAQ for more detail on why we cannot report national benchmark for some of the demographic groups:

<https://tufts.app.box.com/v/idhe-nsive-report-faq>

If you notice unavailable/missing data in this page, it could mean any of the following for your institution: (i) does not report this data; (ii) did not provide this data in past years; (iii) does not separately submit data for one or more of the demographic groups, or (iv) the data is reported for 10 or fewer students.

* <https://nces.ed.gov/ipeds/report-your-data/race-ethnicity-collecting-data-for-reporting-purposes>

Looking Closer

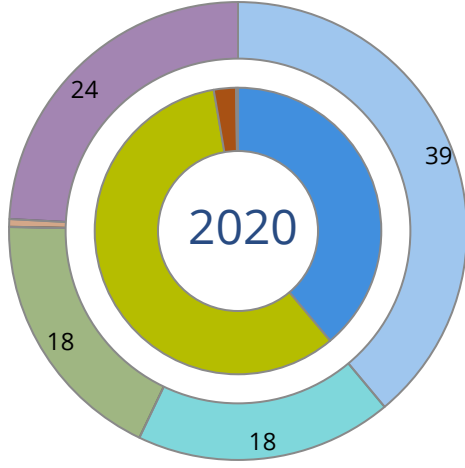
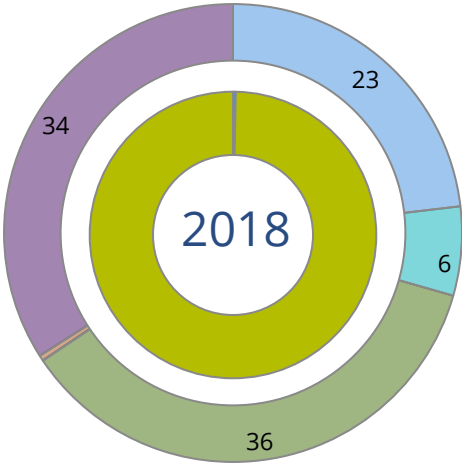
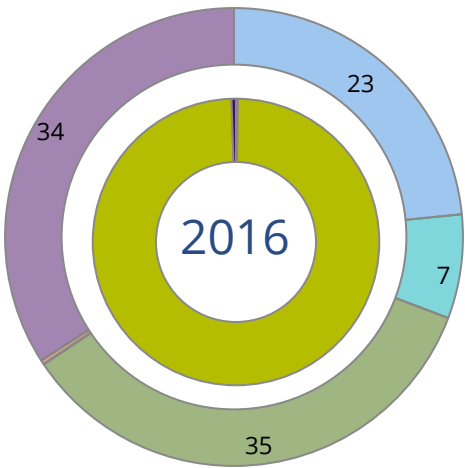
By Race/Ethnicity

This page provides the numbers we used to calculate race / ethnicity group voting rates. We include the counts of students and the change in rates between the two most recent comparable election years. If you notice unavailable/missing data in this page, it could mean any of the following for your institution: (i) does not report this data; (ii) did not provide this data in past years; (iii) does not separately submit data for one or more of the demographic groups, or (iv) the data is reported for 10 or fewer students.

	2016			2018			2020			2016-2020 Change (p.p)
	Enrolled	Voted	Rate	Enrolled	Voted	Rate	Enrolled	Voted	Rate	
Asian	1,497	342	23	1,452	192	13	1,246	339	27	↑ 4
American Indian/ Alaska Native	43	26	60	46	21	46	34	19	56	↓ -5
Black	7,629	4,881	64	6,612	3,138	47	4,723	2,918	62	↓ -2
Hispanic	2,149	1,050	49	2,218	680	31	1,932	938	49	↓ 0
Native Hawaiian/ Pacific Islander	37	13	35	32	11	34	29	19	66	↑ 30
2 or More Races	500	283	57	491	202	41	395	244	62	↑ 5
White	3,596	1,818	51	3,294	1,175	36	2,687	1,533	57	↑ 6
Race Unknown	707	355	50	487	184	38	420	197	47	↓ -3

By Voting Method

Not-In-Person Early Vote In-Person Other Provisional Unknown



	2016		2018		2020		2016-2020	
	Voted	Rate	Voted	Rate	Voted	Rate	Change (p.p.)	
Early Vote	-	-	-	-	-	-	-	
In-Person on Election Day	8,710	99	5,585	100	3,627	58	-41	↓
Not-In-Person	21	0	16	0	2,412	39	39	↑
Other	-	-	-	-	-	-	-	
Provisional	-	-	-	-	158	3	-	
Voting Method Unknown	37	1	-	-	-	-	-	

These are estimated rates for vote method utilization, the number of students utilizing each method, and the percent of students utilizing each method. Not all U.S. states provide information on vote method; voting method for voter files from these states are classified "Voting Method Unknown." For a list of these states, see our FAQ. <https://idhe.tufts.edu/nsive/nsive-faq#CampusReports>

By Age Group

	2016	2018	2020
18-21	50%	32%	50%
22-24	50%	33%	49%
25-29	55%	38%	55%
30-39	60%	46%	61%
40-49	66%	55%	67%
50+	72%	67%	72%

Voting is habit-forming and young voters will usually continue as voters in subsequent elections. Also, young voters are more likely to be contacted by campaigns and are visible, and therefore significant, to elected officials. While in the past, we have seen voting rates increase across age groups, in recent cycles, the most significant increases have been among first-time and the youngest voters. Some colleges serve primarily young students, traditionally viewed as students in the 18-21 or 22-24 categories here. Others have much higher numbers of enrolled older undergraduate or graduate students.

Looking Closer

By Age Group

Here, we provide the numbers of students in each age category and the voting rates for each group. These are based on the student’s age on the day of the election, as calculated by the National Student Clearinghouse using data from student enrollment records.

	2016			2018			2020			2016-2020	
	Enrolled	Voted	Rate	Enrolled	Voted	Rate	Enrolled	Voted	Rate	Change (p.p)	
18-21	6,161	3,052	50	5,707	1,831	32	4,481	2,236	50	↑	0
22-24	2,852	1,438	50	2,473	822	33	1,944	953	49	↓	-1
25-29	2,908	1,600	55	2,745	1,056	38	2,043	1,120	55	↓	0
30-39	2,576	1,543	60	2,312	1,061	46	2,065	1,262	61	↑	1
40-49	1,056	702	66	863	476	55	643	428	67	↑	0
50+	605	433	72	532	357	67	290	208	72	↑	0

Looking Closer

By Sex

	2016			2018			2020			2016-2020	
	Enrolled	Voted	Rate	Enrolled	Voted	Rate	Enrolled	Voted	Rate	Change (p.p)	
Female	10,030	5,821	58	9,369	3,837	41	3,805	2,216	58	↑	0
Male	6,119	2,945	48	5,248	1,762	34	1,625	864	53	↑	5

These are estimated voting rates for sex groups and the numbers we used to calculate their voting rates. These classifications are provided by campuses and are obtained following the reporting procedures defined by the National Center for Education Statistics (NCES) of the Institute of Education Sciences (IES). Presently, NCES requires institutions to report students as “Male” or “Female” only.*

If you notice missing data in this page, it could mean any of the following for your institution: (i) does not report this data; (ii) did not provide this data in past years; (iii) does not separately submit data for one or more of the demographic groups, or (iv) the data is reported for 10 or fewer students.

*<https://surveys.nces.ed.gov/ipeds/public/survey-materials/faq?faqid=11>

Looking Closer

By Education Level / Undergraduate Class Year

	2016			2018			2020			2016-2020	
	Enrolled	Voted	Rate (%)	Enrolled	Voted	Rate (%)	Enrolled	Voted	Rate (%)	Change (p.p)	
EDUCATION LEVEL											
Undergraduate	16,148	8,764	54	14,631	5,603	38	11,463	6,205	54	↓	0
Graduate	-	-	-	-	-	-	-	-	-	-	-
Class Unknown	-	-	-	-	-	-	-	-	-	-	-
CLASS YEAR											
First Year	11,018	53	5,806	9,532	35	3,338	6,934	51	3,533	↓	-2
Second Year	4,885	61	2,962	4,848	47	2,265	4,353	61	2,673	↑	1
Upper Level	-	-	-	-	-	-	-	-	-	-	-
ENROLLMENT STATUS											
Full-time	4,883	2,419	50	4,806	1,595	33	4,055	2,018	50	↑	0
Part-time	11,275	6,349	56	9,826	4,008	41	7,411	4,189	57	↑	0

These are estimated voting rates by Education Level (undergraduate/graduate), Class Year, and Enrollment Status (full-time/part-time), and the numbers we used to calculate these rates.

If you notice missing data in this page, it could mean any of the following for your institution: (i) does not report this data; (ii) did not provide this data in past years; (iii) does not separately submit data for one or more of the demographic groups, or (iv) the data is reported for 10 or fewer students.

By Field of Study

FIELDS	2016			2018			2020			2016-2020	
	Enrolled	Voted	Rate	Enrolled	Voted	Rate	Enrolled	Voted	Rate	Change (p.p)	
Architecture	11	-	-	-	-	-	-	-	-	-	-
Area, Ethnic, Cultural, and Gender Studies	-	-	-	-	-	-	-	-	-	-	-
Biological and Biomedical Sciences	79	39	49	139	48	35	150	75	50	↑	1
Business, Management, and Marketing	2,248	1,084	48	2,032	644	32	1,559	777	50	↑	2
Communication and Journalism	344	220	64	290	141	49	175	114	65	↑	1
Communications Technologies/Technicians	136	71	52	195	76	39	135	87	64	↑	12
Computer and Information Sciences	713	359	50	876	260	30	867	395	46	↓	-5

These are estimated voting rates by field of study, and the numbers we used to calculate the field of study rates. For an explanation of CIP codes, please see our FAQ.* There are roughly 8,000 fields of study among U.S. colleges and universities, so we provide rates for condensed categories.

*<https://tufts.app.box.com/v/idhe-nslve-report-faq>

By Field of Study

FIELDS	2016			2018			2020			2016-2020 Change (p.p)
	Enrolled	Voted	Rate	Enrolled	Voted	Rate	Enrolled	Voted	Rate	
Construction Trades	98	52	53	99	36	36	52	26	50	↓ -3
Education	650	405	62	643	286	44	499	288	58	↓ -5
Engineering and Engineering Technologies	371	172	46	355	108	30	308	145	47	↑ 1
English Language and Literature	173	72	42	142	51	36	91	51	56	↑ 14
Family and Consumer/Human Sciences	32	22	69	29	13	45	22	13	59	↓ -10
Foreign Languages, Literatures, and Lingui..	35	29	83	42	24	57	28	23	82	↓ -1
Health Professions	2,167	1,178	54	4,224	1,595	38	4,116	2,214	54	↓ -1
Law Enforcement, Firefighting, and Protec..	657	361	55	468	177	38	404	228	56	↑ 1
Legal Professions and Studies	87	53	61	110	55	50	61	34	56	↓ -5
Liberal Arts and Sciences, and Humanities	6,108	3,307	54	3,059	1,239	41	1,473	817	55	↑ 1
Mathematics and Statistics	14	-	-	-	-	-	17	-	-	-
Mechanic and Repair Technologies/Techni..	97	42	43	86	19	22	46	20	43	↑ 0
Multi/Interdisciplinary Studies	60	29	48	59	23	39	59	39	66	↑ 18

By Field of Study

FIELDS	2016			2018			2020			2016-2020	
	Enrolled	Voted	Rate	Enrolled	Voted	Rate	Enrolled	Voted	Rate	Change (p.p)	
Personal and Culinary Services	216	124	57	129	50	39	87	47	54	↓	-3
Philosophy and Religious Studies	12	-	-	11	-	-	-	-	-		-
Physical Sciences	65	29	45	46	11	24	36	17	47	↑	3
Psychology	688	401	58	593	240	40	562	336	60	↑	2
Public Administration and Social Service Professions	723	475	66	548	283	52	308	188	61	↓	-5
Visual and Performing Arts	278	161	58	382	182	48	347	222	64	↑	6
Unknown	30	21	70	25	14	56	19	13	68	↓	-2

About This Report

Thank you for participating in the National Study of Learning, Voting, and Engagement.

Since NSLVE's launch in 2013, nearly 1,200 colleges and universities have signed up to receive their voting rates for the 2012, 2014, 2016, 2018, and 2020 federal elections.

Along with others, your institution's participation in this study has allowed us to build a robust database of over 50 million college student records, about 10 million for each election year, that serve as a foundation for innovative research on college student political learning and engagement in democracy.

NSLVE is a signature initiative of the Institute for Democracy and Higher Education (IDHE) at Tufts University's Jonathan M. Tisch College of Civic Life. The mission of IDHE is to shift college and university priorities and culture to advance political learning, agency, and equity. We achieve our mission through research, resource development, technical assistance, and advocacy.

About the Data

The voter registration and voting rates in this report reflect the percentage of your institution's students who were eligible to vote and who actually voted in the 2016, 2018, and 2020 elections.

These results are based on enrollment records your institution submitted to the National Student Clearinghouse (NSC) and publicly available voting files collected by L2 Political.

Enrollment lists are adjusted by deducting students under age 18 (at the time of the election), people identified as non-degree seeking and those identified by campuses as "nonresident aliens" (NRAs) (the federal government's category for mostly international students). Unfortunately, not all campuses report NRAs to NSC. For those campuses, we use IPEDS to calculate the number of NRA students on each campus and adjust NSC enrollment numbers to estimate the number of students to remove. We also quality check NRA removals by verifying that there is little to no discrepancy between the number of international students reported by the campus to IPEDS and to NSC. We cannot adjust subgroup analyses absent identification of NRAs verified by the process above. We welcome closer partnerships with individual colleges and universities to provide more accurate rates. For more on the data and the matching process, see our FAQ on Campus Reports.

Community College Of Philadelphia

Thank you for the work you do to improve your students' political learning and engagement. We hope that you find your NSLVE report useful. For up-to-date news on NSLVE data, resources, and to sign up for our newsletter visit: <https://idhe.tufts.edu>.

References: IDHE encourages report recipients to share this report as broadly as possible, including posting it on the college or university's website. When doing so, please use the following citation: Institute for Democracy & Higher Education: National Study of Learning, Voting and Engagement. (2021). 2016, 2018, and 2020 report for _____ [name of institution]. Medford, MA.



Barnum Hall
163 Packard Ave.
Medford, MA 02155

tischcollege@tufts.edu
617.627.3453



Institute for Democracy & Higher Education:
National Study of Learning, Voting, and Engagement
Barnum Hall, Medford, MA 02155

Follow Us on Twitter: @TuftsIDHE
NSLVE@tufts.edu
617.627.0620