



October 2021

# **Student Voting Rates for Colorado School Of Mines**

## 2020 NSLVE Campus Report

**October 2021**

**Dear Colleagues:**

We are pleased to send this tailored report containing your students' voting rates for 2020. This report contains three years of relevant topline data: 2016, 2018, and 2020. As always, we disaggregate the data so you can better identify and address gaps in participation.

College and university students participated in record-breaking numbers in the 2020 election. In 2016, the Average Institutional Voting Rate was 53%. This year, it jumped to 66%. We encourage you to review Democracy Counts 2020, our most recent national report.

As in past years, we urge you to share this report widely and strategically, particularly with faculty who, in 2020, were often the most consistent communicators with students about ever-changing voting conditions and deadlines. We also urge you to review our recommendations for engaging elections to cultivate a robust and healthy campus climate for political engagement, discourse, equity, and participation: Election Imperatives (2019) and the more recent Election Imperatives: A Time of Physical Distancing and Social Action. Since "pervasive political discussions" and attentiveness to the campus culture around speech and academic freedom are among our top recommendations, we direct you to our discussion guides on talking about your NSLVE report, on free speech and inclusion, and on hot topics, our Making Sense of ... guides.

Finally, we always encourage you to work with us. Help us help you get better data by reaching out. Email [IDHE@Tufts.edu](mailto:IDHE@Tufts.edu) for more information. And as always, watch your inbox for our periodic newsletter, IDHE Update, for announcements about upcoming releases and new resources.

Congratulations on engaging your students in the 2020 election. Remember, student political learning is a year-round objective. Elections may be episodic, but student political engagement should not be.

All the Best,  
IDHE Team



**(Top Row from left) Duy Trinh, Program Administrator; Adam Gismondi, Director of Impact; Dave Brinker, Senior Researcher;**  
**(Bottom Row from left) Nancy Thomas, Director; Norma López, Postdoctoral Scholar; Prabhat Gautam, Data Manager.**

We also want to acknowledge and thank **Syed Golam Mohaimen, M.S. student in Data Science at Tufts University** for his contributions toward the creation of these reports.

# In This Report

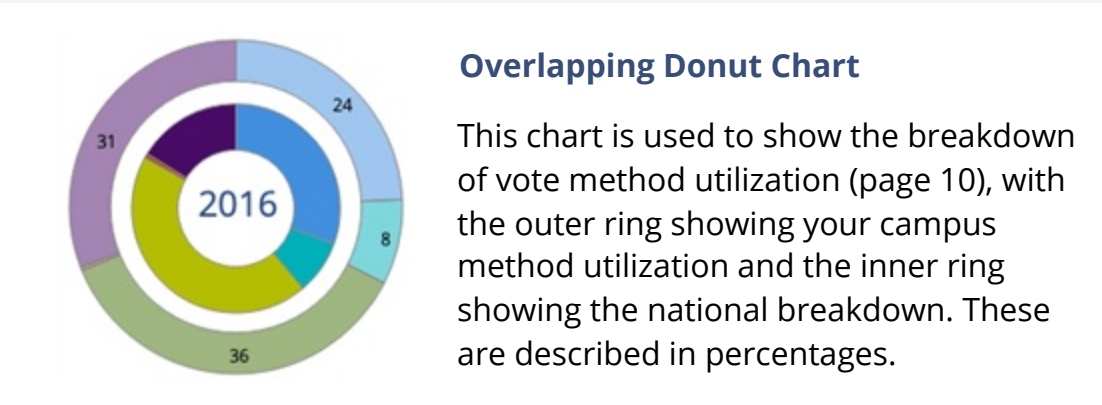
This report presents data on student voter participation rates for your campus. The topline counts on page 5 tells you how many students voted, but we encourage you to look carefully at the data on subsequent pages to learn who voted. Data are presented in the form of vessel charts, overlapping donut charts, and tables.



	2014			2018			2014-2018 Change (p.p.)
	Enrolled	Voted	Rate (%)	Enrolled	Voted	Rate (%)	
Asian	-	-	-	-	-	-	-
American Indian/ Alaska Native	-	-	-	-	-	-	-
Black	-	-	-	-	-	-	-
Hispanic	-	-	-	-	-	-	-

## Tables

The tables show, on the left-side columns, the numbers of students and the rates from 2016, 2018, and 2020. On the left-side, percentage point (p.p.) changes between 2016 and 2020. A red down arrow indicates a decrease, a green up arrow indicates an increase, and a yellow arrow pointing to the right indicates no change. "-" in these tables indicates that the data is unavailable/missing, or is available for 10 or less students.



# Voting, Registration and Yield Rates

YOUR INSTITUTION

78.0%

2020 Voting Rate

+10.3

Change From 2016

ALL INSTITUTIONS

66%

2020 Voting Rate

REGISTRATION RATE

87.7%	85.8%	90.7%
2016	2018	2020

The **Registration Rate** is the percent of your voting-eligible students who registered to vote.

VOTING RATE OF REGISTERED STUDENTS

77.2%	62.9%	86.0%
2016	2018	2020

The **Voting Rate of Registered Students** is the percent of registered students who voted on Election Day. We often refer to this as the “yield” rate.

VOTING RATE

67.7%	54.0%	78.0%
2016	2018	2020

The **Voting Rate** is the percentage of eligible students who voted on Election Day. The voting rate is also the product of the registration and yield rates.

# Looking Closer

## Voting and Registration Rates

	2016	2018	2020	2016-2020 Change (p.p.)
Total Student Enrollment	5,747	6,144	6,703	↑ 956
(Age under 18/Unknown)	–	–	–	–
(IPEDS estimated non-resident aliens)	668	666	581	↓ -87
(FERPA records blocked)	–	–	–	–
(Non-Degree Seeking Students)	–	–	35	–
Total eligible voters	5,077	5,475	6,086	↑ 1,009
Number of students who registered	4,452	4,698	5,520	↑ 1,068
Number of students who voted	3,436	2,957	4,747	↑ 1,311
Registration Rate %	88	86	91	↑ 3
Voting Rate of Registered Students %	77	63	86	↑ 9
Voting Rate %	68	54	78	↑ 10

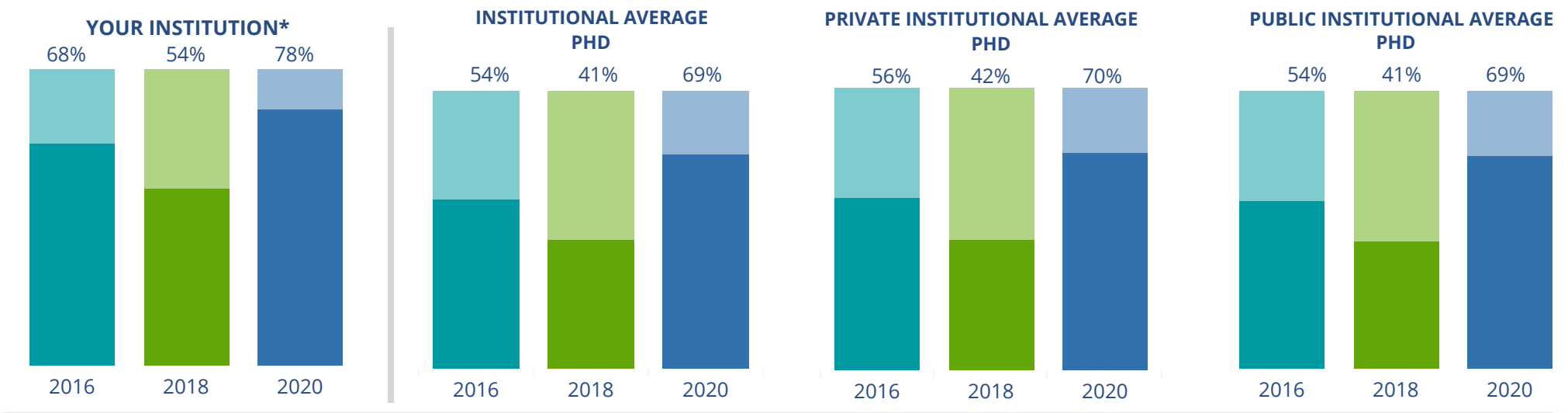
**This page provides the numbers we used to calculate your voting, registration, and yield rates.** The sub-categories under total student enrollment are the adjustments that we make to account for students who are ineligible to vote due to age or citizenship status. We also exclude, when correctly flagged, students who are not pursuing degrees.

We use IPEDS-derived estimates of NRAs when institutions do not submit non-resident alien status data to NSC, or we cannot verify the accuracy of the reported counts. This estimate is given by "IPEDS estimated non-resident aliens" on this page. If you believe the number of international students reported on this report is incorrect, you can manually adjust your institution's voting rates by using our recalculation tool. <https://id-he.tufts.edu/nsive/nsive-recalculation-tool>.

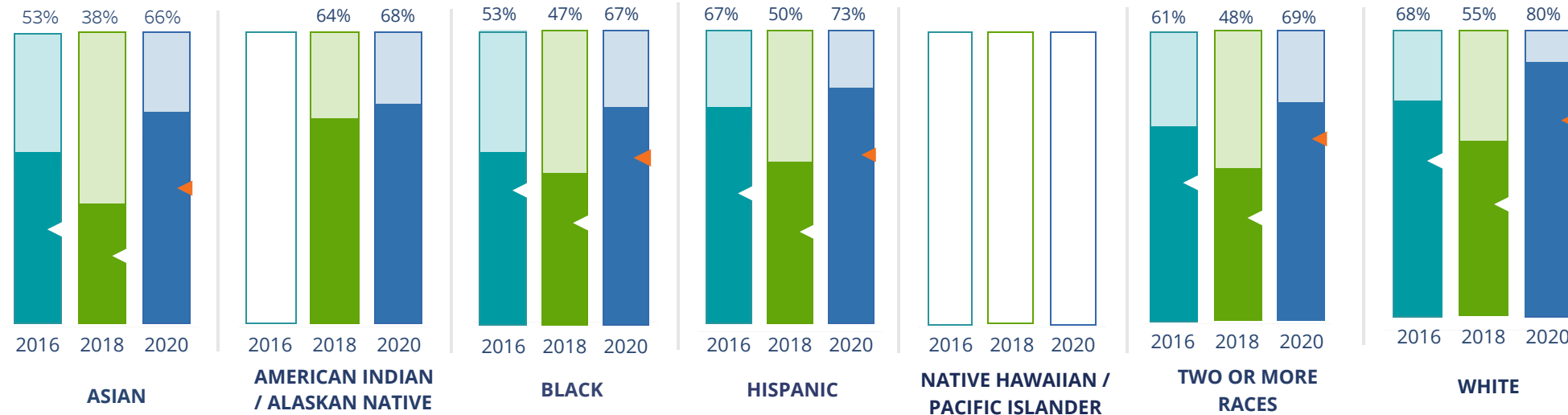
# By Institution Types



These are estimated voting rates of your institution compared to the average voting rates of similar institutions in NSLVE. \*"Your Institution" chart is presented at a different scale.



## By Race / Ethnicity



**These are estimated voting rates for race / ethnicity groups.** These classifications are provided by campuses and are obtained following race reporting procedures\* defined by the National Center for Education Statistics of the Institute of Education Sciences (IES). Please see our FAQ for more detail on why we cannot report national benchmark for some of the demographic groups:

<https://tufts.app.box.com/v/idhe-nslve-report-faq>

If you notice unavailable/missing data in this page, it could mean any of the following for your institution: (i) does not report this data; (ii) did not provide this data in past years; (iii) does not separately submit data for one or more of the demographic groups, or (iv) the data is reported for 10 or fewer students.

\* <https://nces.ed.gov/ipeds/report-your-data/race-ethnicity-collecting-data-for-reporting-purposes>



# Looking Closer

## By Race/Ethnicity

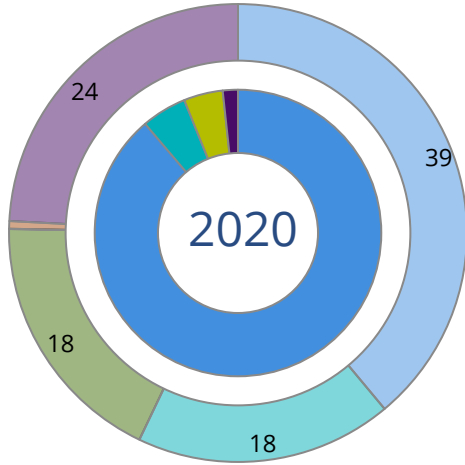
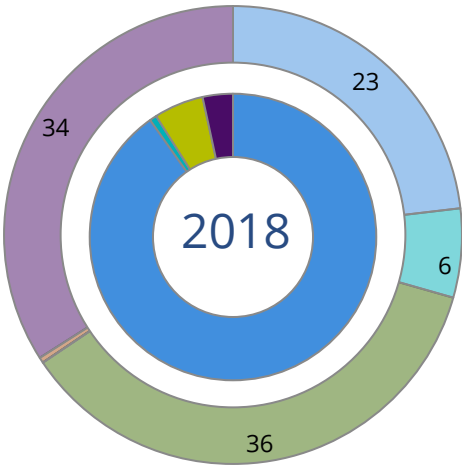
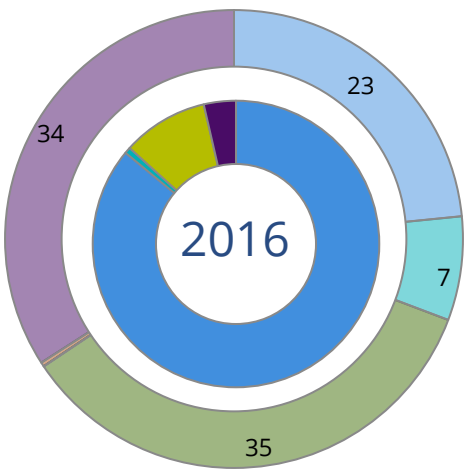
**This page provides the numbers we used to calculate race / ethnicity group voting rates.** We include the counts of students and the change in rates between the two most recent comparable election years. If you notice unavailable/missing data in this page, it could mean any of the following for your institution: (i) does not report this data; (ii) did not provide this data in past years; (iii) does not separately submit data for one or more of the demographic groups, or (iv) the data is reported for 10 or fewer students.

	2016			2018			2020			2016-2020 Change (p.p)
	Enrolled	Voted	Rate	Enrolled	Voted	Rate	Enrolled	Voted	Rate	
Asian	251	133	53	253	95	38	301	198	66	↑ 13
American Indian/ Alaska Native	13	-	-	22	14	64	25	17	68	-
Black	62	33	53	60	28	47	61	41	67	↑ 14
Hispanic	407	271	67	525	262	50	689	503	73	↑ 6
Native Hawaiian/ Pacific Islander	-	-	-	-	-	-	-	-	-	-
2 or More Races	310	190	61	348	167	48	367	252	69	↑ 7
White	4,060	2,767	68	4,234	2,347	55	4,524	3,624	80	↑ 12
Race Unknown	638	34	5	696	44	6	694	112	16	↑ 11



# By Voting Method

Not-In-Person Early Vote In-Person Other Provisional Unknown



	2016		2018		2020		2016-2020	
	Voted	Rate	Voted	Rate	Voted	Rate	Change (p.p.)	
Early Vote	23	1	24	1	244	5	4	↑
In-Person on Election Day	334	10	167	6	208	4	-5	↓
Not-In-Person	2,954	86	2,667	90	4,216	89	3	↑
Other	-	-	-	-	-	-	-	
Provisional	-	-	-	-	-	-	-	
Voting Method Unknown	125	4	99	3	79	2	-2	↓

These are estimated rates for vote method utilization, the number of students utilizing each method, and the percent of students utilizing each method. Not all U.S. states provide information on vote method; voting method for voter files from these states are classified "Voting Method Unknown." For a list of these states, see our FAQ. <https://idhe.tufts.edu/nsive/nsive-faq#CampusReports>

# By Age Group

	2016	2018	2020
18-21	62%	46%	74%
22-24	59%	51%	74%
25-29	53%	50%	59%
30-39	54%	49%	58%
40-49	60%	65%	63%
50+	74%	82%	83%

**Voting is habit-forming and young voters will usually continue as voters in subsequent elections.** Also, young voters are more likely to be contacted by campaigns and are visible, and therefore significant, to elected officials. While in the past, we have seen voting rates increase across age groups, in recent cycles, the most significant increases have been among first-time and the youngest voters. Some colleges serve primarily young students, traditionally viewed as students in the 18-21 or 22-24 categories here. Others have much higher numbers of enrolled older undergraduate or graduate students.

# Looking Closer

## By Age Group

Here, we provide the numbers of students in each age category and the voting rates for each group. These are based on the student's age on the day of the election, as calculated by the National Student Clearinghouse using data from student enrollment records.

	2016			2018			2020			2016-2020	
	Enrolled	Voted	Rate	Enrolled	Voted	Rate	Enrolled	Voted	Rate	Change (p.p)	
18-21	3,533	2,192	62	3,879	1,799	46	4,286	3,184	74	↑	12
22-24	1,020	602	59	1,102	566	51	1,070	792	74	↑	15
25-29	684	361	53	665	334	50	765	450	59	↑	6
30-39	409	220	54	406	199	49	448	258	58	↑	4
40-49	68	41	60	69	45	65	68	43	63	↑	3
50+	27	20	74	17	14	82	24	20	83	↑	9

# Looking Closer

## By Sex

	2016			2018			2020			2016-2020	
	Enrolled	Voted	Rate	Enrolled	Voted	Rate	Enrolled	Voted	Rate	Change (p.p)	
Female	1,604	1,051	66	1,819	953	52	2,051	1,542	75	↑	10
Male	4,135	2,384	58	4,318	2,004	46	4,610	3,205	70	↑	12

**These are estimated voting rates for sex groups and the numbers we used to calculate their voting rates.** These classifications are provided by campuses and are obtained following the reporting procedures defined by the National Center for Education Statistics (NCES) of the Institute of Education Sciences (IES). Presently, NCES requires institutions to report students as “Male” or “Female” only.\*

If you notice missing data in this page, it could mean any of the following for your institution: (i) does not report this data; (ii) did not provide this data in past years; (iii) does not separately submit data for one or more of the demographic groups, or (iv) the data is reported for 10 or fewer students.

\*<https://surveys.nces.ed.gov/ipeds/public/survey-materials/faq?faqid=11>

# Looking Closer

## By Education Level / Undergraduate Class Year

	2016			2018			2020			2016-2020	
	Enrolled	Voted	Rate (%)	Enrolled	Voted	Rate (%)	Enrolled	Voted	Rate (%)	Change (p.p)	
EDUCATION LEVEL											
Undergraduate	4,467	2,779	62	4,817	2,279	47	5,131	3,791	74	↑	12
Graduate	1,199	637	53	1,234	648	53	1,497	940	63	↑	10
Class Unknown	75	20	27	87	30	34	33	16	48	↑	22
CLASS YEAR											
First Year	967	58	562	1,179	39	457	1,091	70	764	↑	12
Second Year	1,051	60	629	1,104	43	479	1,196	72	859	↑	12
Upper Level	2,489	64	1,590	2,574	52	1,344	2,865	76	2,174	↑	12
ENROLLMENT STATUS											
Full-time	5,438	3,240	60	5,722	2,705	47	6,158	4,396	71	↑	12
Part-time	303	196	65	416	252	61	503	351	70	↑	5

These are estimated voting rates by Education Level (undergraduate/graduate), Class Year, and Enrollment Status (full-time/part-time), and the numbers we used to calculate these rates.

If you notice missing data in this page, it could mean any of the following for your institution: (i) does not report this data; (ii) did not provide this data in past years; (iii) does not separately submit data for one or more of the demographic groups, or (iv) the data is reported for 10 or fewer students.

## By Field of Study

FIELDS	2016			2018			2020			2016-2020 RateChange (p.p)
	Enrolled	Voted	Rate	Enrolled	Voted	Rate	Enrolled	Voted	Rate	
Biological and Biomedical Sciences	-	-	-	-	-	-	62	53	85	-
Computer and Information Sciences	345	207	60	614	302	49	909	646	71	↑ 11
Engineering and Engineering Technologies	4,649	2,784	60	4,792	2,271	47	4,939	3,542	72	↑ 12
Liberal Arts and Sciences, and Humanities	122	81	66	102	46	45	114	72	63	↓ -3
Mathematics and Statistics	146	114	78	169	95	56	211	166	79	↑ 1
Multi/Interdisciplinary Studies	-	-	-	-	-	-	17	14	82	-
Physical Sciences	288	175	61	290	172	59	281	194	69	↑ 8

**These are estimated voting rates by field of study, and the numbers we used to calculate the field of study rates.** For an explanation of CIP codes, please see our FAQ.\* There are roughly 8,000 fields of study among U.S. colleges and universities, so we provide rates for condensed categories.

\*<https://tufts.app.box.com/v/idhe-nslve-report-faq>

# By Field of Study

FIELDS	2016			2018			2020			2016-2020 Change (p.p)
	Enrolled	Voted	Rate	Enrolled	Voted	Rate	Enrolled	Voted	Rate	
Social Sciences	113	53	47	71	31	44	92	42	46	↓ -1
Unknown	78	22	28	95	36	38	36	18	50	↑ 22



# About This Report

## Thank you for participating in the National Study of Learning, Voting, and Engagement.

Since NSLVE's launch in 2013, nearly 1,200 colleges and universities have signed up to receive their voting rates for the 2012, 2014, 2016, 2018, and 2020 federal elections.

Along with others, your institution's participation in this study has allowed us to build a robust database of over 50 million college student records, about 10 million for each election year, that serve as a foundation for innovative research on college student political learning and engagement in democracy.

NSLVE is a signature initiative of the Institute for Democracy and Higher Education (IDHE) at Tufts University's Jonathan M. Tisch College of Civic Life. The mission of IDHE is to shift college and university priorities and culture to advance political learning, agency, and equity. We achieve our mission through research, resource development, technical assistance, and advocacy.

### About the Data

The voter registration and voting rates in this report reflect the percentage of your institution's students who were eligible to vote and who actually voted in the 2016, 2018, and 2020 elections.

These results are based on enrollment records your institution submitted to the National Student Clearinghouse (NSC) and publicly available voting files collected by L2 Political.

Enrollment lists are adjusted by deducting students under age 18 (at the time of the election), people identified as non-degree seeking and those identified by campuses as "nonresident aliens" (NRAs) (the federal government's category for mostly international students). Unfortunately, not all campuses report NRAs to NSC. For those campuses, we use IPEDS to calculate the number of NRA students on each campus and adjust NSC enrollment numbers to estimate the number of students to remove. We also quality check NRA removals by verifying that there is little to no discrepancy between the number of international students reported by the campus to IPEDS and to NSC. We cannot adjust subgroup analyses absent identification of NRAs verified by the process above. We welcome closer partnerships with individual colleges and universities to provide more accurate rates. For more on the data and the matching process, see our FAQ on Campus Reports.

Colorado School Of Mines

Thank you for the work you do to improve your students' political learning and engagement. We hope that you find your NSLVE report useful. For up-to-date news on NSLVE data, resources, and to sign up for our newsletter visit: <https://idhe.tufts.edu>.

References: IDHE encourages report recipients to share this report as broadly as possible, including posting it on the college or university's website. When doing so, please use the following citation: Institute for Democracy & Higher Education: National Study of Learning, Voting and Engagement. (2021). 2016, 2018, and 2020 report for \_\_\_\_\_ [name of institution]. Medford, MA.



Barnum Hall  
163 Packard Ave.  
Medford, MA 02155

tischcollege@tufts.edu  
617.627.3453



Institute for Democracy & Higher Education:  
National Study of Learning, Voting, and Engagement  
Barnum Hall, Medford, MA 02155

Follow Us on Twitter: @TuftsIDHE  
NSLVE@tufts.edu  
617.627.0620