



October 2021

# Student Voting Rates for Bucknell University

2020 NSLVE Campus Report



Jonathan M. Tisch  
College of Civic Life



INSTITUTE FOR DEMOCRACY  
& HIGHER EDUCATION

**October 2021**

**Dear Colleagues:**

We are pleased to send this tailored report containing your students' voting rates for 2020. This report contains three years of relevant topline data: 2016, 2018, and 2020. As always, we disaggregate the data so you can better identify and address gaps in participation.

College and university students participated in record-breaking numbers in the 2020 election. In 2016, the Average Institutional Voting Rate was 53%. This year, it jumped to 66%. We encourage you to review Democracy Counts 2020, our most recent national report.

As in past years, we urge you to share this report widely and strategically, particularly with faculty who, in 2020, were often the most consistent communicators with students about ever-changing voting conditions and deadlines. We also urge you to review our recommendations for engaging elections to cultivate a robust and healthy campus climate for political engagement, discourse, equity, and participation: Election Imperatives (2019) and the more recent Election Imperatives: A Time of Physical Distancing and Social Action. Since "pervasive political discussions" and attentiveness to the campus culture around speech and academic freedom are among our top recommendations, we direct you to our discussion guides on talking about your NSLVE report, on free speech and inclusion, and on hot topics, our Making Sense of ... guides.

Finally, we always encourage you to work with us. Help us help you get better data by reaching out. Email [IDHE@Tufts.edu](mailto:IDHE@Tufts.edu) for more information. And as always, watch your inbox for our periodic newsletter, IDHE Update, for announcements about upcoming releases and new resources.

Congratulations on engaging your students in the 2020 election. Remember, student political learning is a year-round objective. Elections may be episodic, but student political engagement should not be.

All the Best,  
IDHE Team



**(Top Row from left) Duy Trinh, Program Administrator; Adam Gismondi, Director of Impact; Dave Brinker, Senior Researcher;**  
**(Bottom Row from left) Nancy Thomas, Director; Norma López, Postdoctoral Scholar; Prabhat Gautam, Data Manager.**

We also want to acknowledge and thank **Syed Golam Mohaimen, M.S. student in Data Science at Tufts University** for his contributions toward the creation of these reports.

# In This Report

This report presents data on student voter participation rates for your campus. The topline counts on page 5 tells you how many students voted, but we encourage you to look carefully at the data on subsequent pages to learn who voted. Data are presented in the form of vessel charts, overlapping donut charts, and tables.



Vessel Chart

This chart shows rates out of 100%, with arrows to the right of each bar representing relevant national averages (medians), which you can find in IDHE's national report Democracy Counts 2020.

	2014			2018			2014-2018 Change (p.p.)
	Enrolled	Voted	Rate (%)	Enrolled	Voted	Rate (%)	
Asian	-	-	-	-	-	-	-
American Indian/ Alaska Native	-	-	-	-	-	-	-
Black	-	-	-	-	-	-	-
Hispanic	-	-	-	-	-	-	-

## Tables

The tables show, on the left-side columns, the numbers of students and the rates from 2016, 2018, and 2020. On the left-side, percentage point (p.p.) changes between 2016 and 2020. A red down arrow indicates a decrease, a green up arrow indicates an increase, and a yellow arrow pointing to the right indicates no change. "-" in these tables indicates that the data is unavailable/missing, or is available for 10 or less students.



Overlapping Donut Chart

This chart is used to show the breakdown of vote method utilization (page 10), with the outer ring showing your campus method utilization and the inner ring showing the national breakdown. These are described in percentages.

# Voting, Registration and Yield Rates

YOUR INSTITUTION

75.6%

2020 Voting Rate

+17.2

Change From 2016

ALL INSTITUTIONS

66%

2020 Voting Rate

REGISTRATION RATE

Year	Registration Rate
2016	86.2%
2018	80.2%
2020	91.3%

The **Registration Rate** is the percent of your voting-eligible students who registered to vote.

VOTING RATE OF REGISTERED STUDENTS

Year	Voting Rate of Registered Students
2016	67.7%
2018	35.0%
2020	82.8%

The **Voting Rate of Registered Students** is the percent of registered students who voted on Election Day. We often refer to this as the “yield” rate.

VOTING RATE

Year	Voting Rate
2016	58.4%
2018	28.1%
2020	75.6%

The **Voting Rate** is the percentage of eligible students who voted on Election Day. The voting rate is also the product of the registration and yield rates.

# Looking Closer

## Voting and Registration Rates

	2016	2018	2020	2016-2020 Change (p.p.)	
Total Student Enrollment	3,334	3,490	3,494	↑	160
(Age under 18/Unknown)	–	–	–		–
(IPEDS estimated non-resident aliens)	227	255	180	↓	-47
(FERPA records blocked)	–	–	–		–
(Non-Degree Seeking Students)	–	–	17		–
Total eligible voters	3,105	3,235	3,297	↑	192
Number of students who registered	2,675	2,594	3,009	↑	334
Number of students who voted	1,812	908	2,491	↑	679
Registration Rate %	86	80	91	↑	5
Voting Rate of Registered Students %	68	35	83	↑	15
Voting Rate %	58	28	76	↑	17

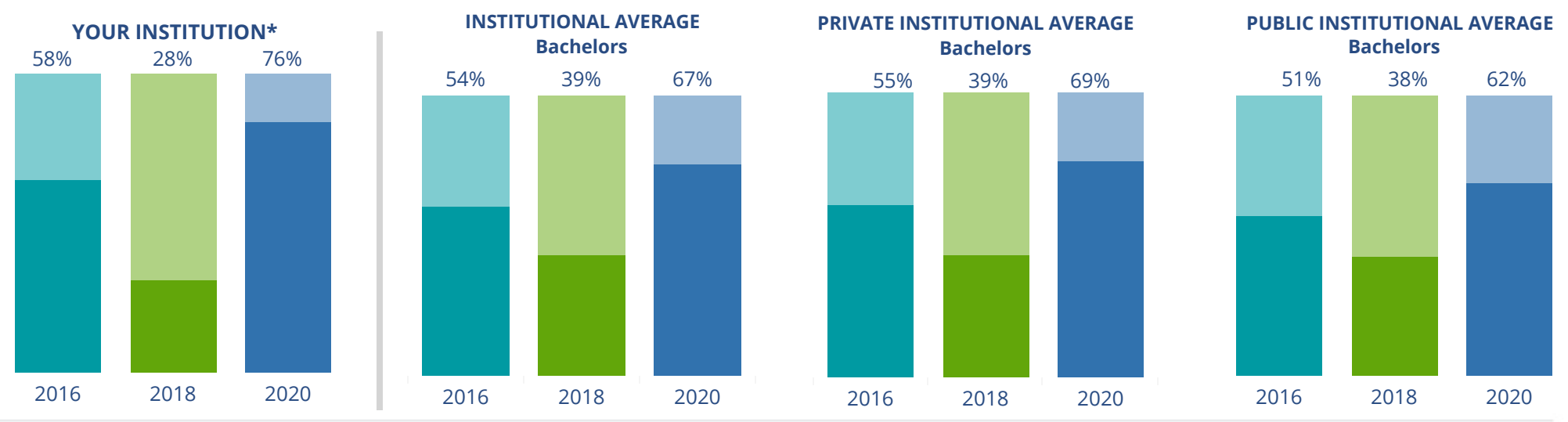
**This page provides the numbers we used to calculate your voting, registration, and yield rates.** The sub-categories under total student enrollment are the adjustments that we make to account for students who are ineligible to vote due to age or citizenship status. We also exclude, when correctly flagged, students who are not pursuing degrees.

We use IPEDS-derived estimates of NRAs when institutions do not submit non-resident alien status data to NSC, or we cannot verify the accuracy of the reported counts. This estimate is given by "IPEDS estimated non-resident aliens" on this page. If you believe the number of international students reported on this report is incorrect, you can manually adjust your institution's voting rates by using our recalculation tool. <https://id-he.tufts.edu/nsive/nsive-recalculation-tool>.

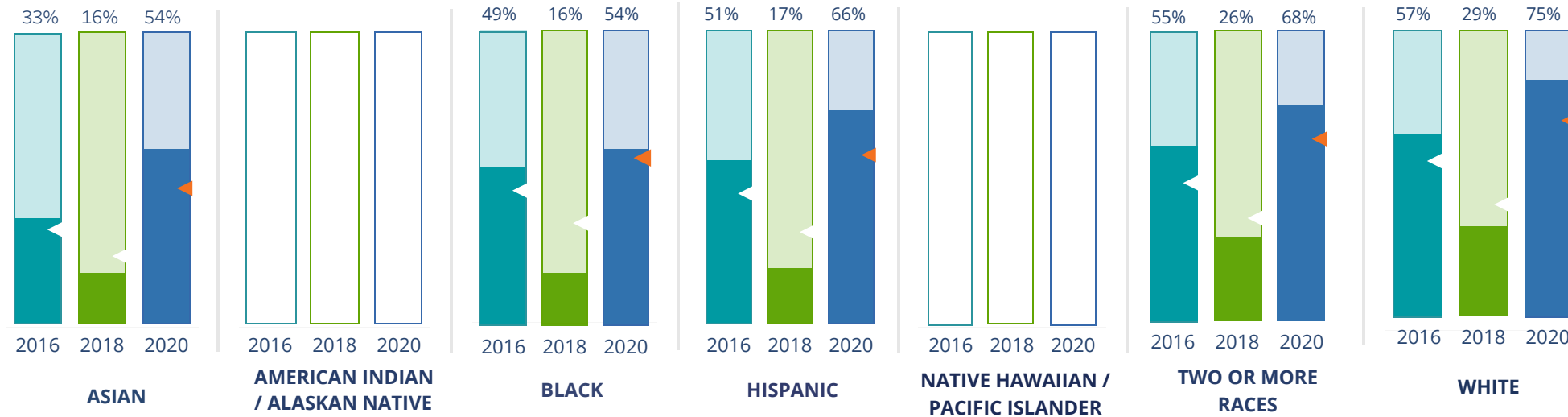
# By Institution Types



These are estimated voting rates of your institution compared to the average voting rates of similar institutions in NSLVE. \*"Your Institution" chart is presented at a different scale.



## By Race / Ethnicity



**These are estimated voting rates for race / ethnicity groups.** These classifications are provided by campuses and are obtained following race reporting procedures\* defined by the National Center for Education Statistics of the Institute of Education Sciences (IES). Please see our FAQ for more detail on why we cannot report national benchmark for some of the demographic groups:

<https://tufts.app.box.com/v/idhe-nsive-report-faq>

If you notice unavailable/missing data in this page, it could mean any of the following for your institution: (i) does not report this data; (ii) did not provide this data in past years; (iii) does not separately submit data for one or more of the demographic groups, or (iv) the data is reported for 10 or fewer students.

\* <https://nces.ed.gov/ipeds/report-your-data/race-ethnicity-collecting-data-for-reporting-purposes>



# Looking Closer

## By Race/Ethnicity

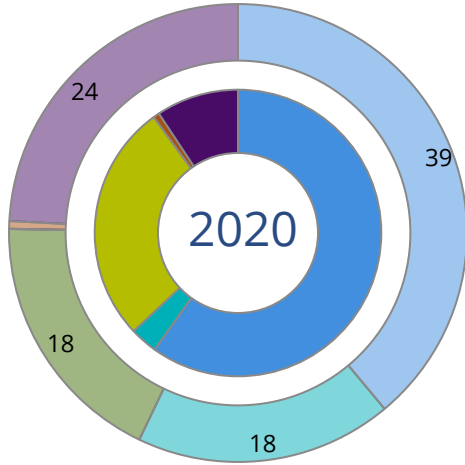
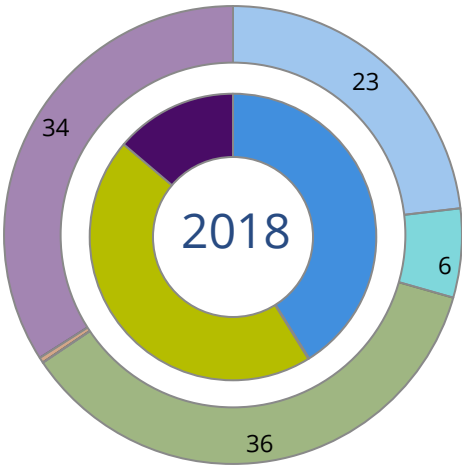
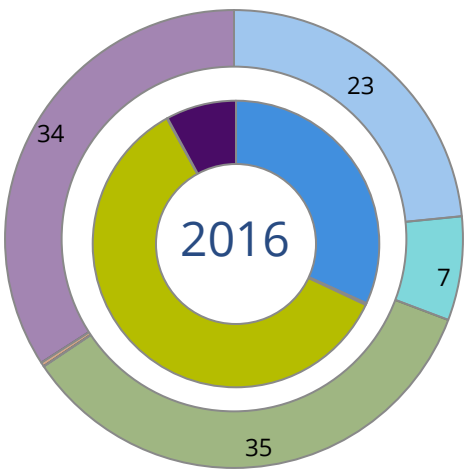
This page provides the numbers we used to calculate race / ethnicity group voting rates. We include the counts of students and the change in rates between the two most recent comparable election years. If you notice unavailable/missing data in this page, it could mean any of the following for your institution: (i) does not report this data; (ii) did not provide this data in past years; (iii) does not separately submit data for one or more of the demographic groups, or (iv) the data is reported for 10 or fewer students.

	2016			2018			2020			2016-2020 Change (p.p)
	Enrolled	Voted	Rate	Enrolled	Voted	Rate	Enrolled	Voted	Rate	
Asian	266	87	33	297	47	16	208	113	54	↑ 22
American Indian/ Alaska Native	-	-	-	-	-	-	-	-	-	-
Black	140	68	49	140	23	16	150	81	54	↑ 5
Hispanic	213	108	51	253	44	17	241	158	66	↑ 15
Native Hawaiian/ Pacific Islander	-	-	-	-	-	-	-	-	-	-
2 or More Races	138	76	55	171	45	26	156	106	68	↑ 13
White	2,564	1,469	57	2,612	745	29	2,710	2,023	75	↑ 17
Race Unknown	-	-	-	16	-	-	-	-	-	-



# By Voting Method

Not-In-Person Early Vote In-Person Other Provisional Unknown



	2016		2018		2020		2016-2020	
	Voted	Rate	Voted	Rate	Voted	Rate	Change (p.p.)	
Early Vote	–	–	–	–	76	3	–	
In-Person on Election Day	1,087	60	409	45	672	27	-33	↓
Not-In-Person	576	32	373	41	1,493	60	28	↑
Other	–	–	–	–	–	–	–	
Provisional	–	–	–	–	18	1	–	
Voting Method Unknown	145	8	125	14	232	9	1	↑

These are estimated rates for vote method utilization, the number of students utilizing each method, and the percent of students utilizing each method. Not all U.S. states provide information on vote method; voting method for voter files from these states are classified “Voting Method Unknown.” For a list of these states, see our FAQ. <https://idhe.tufts.edu/nsive/nsive-faq#CampusReports>

# By Age Group

	2016	2018	2020
18-21	54%	26%	72%
22-24	53%	31%	70%
25-29	63%	—	74%
30-39	—	—	—
40-49	—	—	—
50+	—	—	—

**Voting is habit-forming and young voters will usually continue as voters in subsequent elections.** Also, young voters are more likely to be contacted by campaigns and are visible, and therefore significant, to elected officials. While in the past, we have seen voting rates increase across age groups, in recent cycles, the most significant increases have been among first-time and the youngest voters. Some colleges serve primarily young students, traditionally viewed as students in the 18-21 or 22-24 categories here. Others have much higher numbers of enrolled older undergraduate or graduate students.

# Looking Closer

## By Age Group

**Here, we provide the numbers of students in each age category and the voting rates for each group.** These are based on the student’s age on the day of the election, as calculated by the National Student Clearinghouse using data from student enrollment records.

	2016			2018			2020			2016-2020	
	Enrolled	Voted	Rate	Enrolled	Voted	Rate	Enrolled	Voted	Rate	Change (p.p)	
18-21	3,050	1,659	54	3,216	821	26	3,206	2,301	72	↑	17
22-24	252	134	53	235	72	31	242	169	70	↑	17
25-29	19	12	63	20	-	-	19	14	74	↑	11
30-39	-	-	-	-	-	-	-	-	-	-	-
40-49	-	-	-	-	-	-	-	-	-	-	-
50+	-	-	-	-	-	-	-	-	-	-	-

# Looking Closer

## By Sex

	2016			2018			2020			2016-2020	
	Enrolled	Voted	Rate	Enrolled	Voted	Rate	Enrolled	Voted	Rate	Change (p.p)	
Female	1,730	1,087	63	1,803	559	31	1,839	1,464	80	↑	17
Male	1,601	725	45	1,686	349	21	1,636	1,027	63	↑	17

**These are estimated voting rates for sex groups and the numbers we used to calculate their voting rates.** These classifications are provided by campuses and are obtained following the reporting procedures defined by the National Center for Education Statistics (NCES) of the Institute of Education Sciences (IES). Presently, NCES requires institutions to report students as “Male” or “Female” only.\*

If you notice missing data in this page, it could mean any of the following for your institution: (i) does not report this data; (ii) did not provide this data in past years; (iii) does not separately submit data for one or more of the demographic groups, or (iv) the data is reported for 10 or fewer students.

\*<https://surveys.nces.ed.gov/ipeds/public/survey-materials/faq?faqid=11>

# Looking Closer

## By Education Level / Undergraduate Class Year

	2016			2018			2020			2016-2020	
	Enrolled	Voted	Rate (%)	Enrolled	Voted	Rate (%)	Enrolled	Voted	Rate (%)	Change (p.p)	
EDUCATION LEVEL											
Undergraduate	3,290	1,787	54	3,452	894	26	3,456	2,475	72	↑ 17	
Graduate	41	25	61	31	11	35	19	16	84	↑ 23	
Class Unknown	-	-	-	-	-	-	-	-	-	-	-
CLASS YEAR											
First Year	680	57	390	872	19	165	907	69	622	↑ 11	
Second Year	859	52	447	859	20	168	848	73	615	↑ 20	
Upper Level	1,750	54	950	1,716	33	558	1,700	73	1,237	↑ 18	
ENROLLMENT STATUS											
Full-time	3,328	1,810	54	3,482	903	26	3,463	2,480	72	↑ 17	
Part-time	-	-	-	-	-	-	12	11	92	-	

These are estimated voting rates by Education Level (undergraduate/graduate), Class Year, and Enrollment Status (full-time/part-time), and the numbers we used to calculate these rates.

If you notice missing data in this page, it could mean any of the following for your institution: (i) does not report this data; (ii) did not provide this data in past years; (iii) does not separately submit data for one or more of the demographic groups, or (iv) the data is reported for 10 or fewer students.

## By Field of Study

FIELDS	2016			2018			2020			2016-2020
	Enrolled	Voted	Rate	Enrolled	Voted	Rate	Enrolled	Voted	Rate	Change (p.p)
Area, Ethnic, Cultural, and Gender Studies	–	–	–	26	–	–	27	21	78	–
Biological and Biomedical Sciences	395	236	60	418	123	29	424	333	79	↑ 19
Business, Management, and Marketing	474	238	50	543	113	21	601	418	70	↑ 19
Computer and Information Sciences	55	30	55	49	–	–	65	39	60	↑ 5
Education	81	50	62	77	25	32	79	61	77	↑ 15
Engineering and Engineering Technologies	665	348	52	656	159	24	642	439	68	↑ 16
English Language and Literature	70	45	64	62	20	32	51	38	75	↑ 10

**These are estimated voting rates by field of study, and the numbers we used to calculate the field of study rates.** For an explanation of CIP codes, please see our FAQ.\* There are roughly 8,000 fields of study among U.S. colleges and universities, so we provide rates for condensed categories.

\*<https://tufts.app.box.com/v/idhe-nslve-report-faq>

## By Field of Study

FIELDS	2016			2018			2020			2016-2020 Change (p.p)
	Enrolled	Voted	Rate	Enrolled	Voted	Rate	Enrolled	Voted	Rate	
Foreign Languages, Literatures, and Lingui..	31	20	65	53	22	42	35	26	74	↑ 10
History	23	–	–	33	18	55	24	18	75	–
Liberal Arts and Sciences, and Humanities	716	387	54	798	162	20	753	529	70	↑ 16
Mathematics and Statistics	57	30	53	50	14	28	43	31	72	↑ 19
Multi/Interdisciplinary Studies	25	17	68	21	–	–	–	–	–	–
Natural Resources and Conservation	34	19	56	41	15	37	33	23	70	↑ 14
Philosophy and Religious Studies	–	–	–	26	–	–	12	–	–	–
Physical Sciences	98	62	63	91	42	46	83	59	71	↑ 8
Psychology	125	84	67	98	32	33	149	114	77	↑ 9
Social Sciences	419	205	49	411	122	30	409	296	72	↑ 23
Visual and Performing Arts	35	19	54	31	14	45	20	18	90	↑ 36
Unknown	16	–	–	–	–	–	19	14	74	–



# About This Report

## Thank you for participating in the National Study of Learning, Voting, and Engagement.

Since NSLVE's launch in 2013, nearly 1,200 colleges and universities have signed up to receive their voting rates for the 2012, 2014, 2016, 2018, and 2020 federal elections.

Along with others, your institution's participation in this study has allowed us to build a robust database of over 50 million college student records, about 10 million for each election year, that serve as a foundation for innovative research on college student political learning and engagement in democracy.

NSLVE is a signature initiative of the Institute for Democracy and Higher Education (IDHE) at Tufts University's Jonathan M. Tisch College of Civic Life. The mission of IDHE is to shift college and university priorities and culture to advance political learning, agency, and equity. We achieve our mission through research, resource development, technical assistance, and advocacy.

### About the Data

The voter registration and voting rates in this report reflect the percentage of your institution's students who were eligible to vote and who actually voted in the 2016, 2018, and 2020 elections.

These results are based on enrollment records your institution submitted to the National Student Clearinghouse (NSC) and publicly available voting files collected by L2 Political.

Enrollment lists are adjusted by deducting students under age 18 (at the time of the election), people identified as non-degree seeking and those identified by campuses as "nonresident aliens" (NRAs) (the federal government's category for mostly international students). Unfortunately, not all campuses report NRAs to NSC. For those campuses, we use IPEDS to calculate the number of NRA students on each campus and adjust NSC enrollment numbers to estimate the number of students to remove. We also quality check NRA removals by verifying that there is little to no discrepancy between the number of international students reported by the campus to IPEDS and to NSC. We cannot adjust subgroup analyses absent identification of NRAs verified by the process above. We welcome closer partnerships with individual colleges and universities to provide more accurate rates. For more on the data and the matching process, see our FAQ on Campus Reports.

Bucknell University

Thank you for the work you do to improve your students' political learning and engagement. We hope that you find your NSLVE report useful. For up-to-date news on NSLVE data, resources, and to sign up for our newsletter visit: <https://idhe.tufts.edu>.

References: IDHE encourages report recipients to share this report as broadly as possible, including posting it on the college or university's website. When doing so, please use the following citation: Institute for Democracy & Higher Education: National Study of Learning, Voting and Engagement. (2021). 2016, 2018, and 2020 report for \_\_\_\_\_ [name of institution]. Medford, MA.



Barnum Hall  
163 Packard Ave.  
Medford, MA 02155

tischcollege@tufts.edu  
617.627.3453



Institute for Democracy & Higher Education:  
National Study of Learning, Voting, and Engagement  
Barnum Hall, Medford, MA 02155

Follow Us on Twitter: @TuftsIDHE  
NSLVE@tufts.edu  
617.627.0620